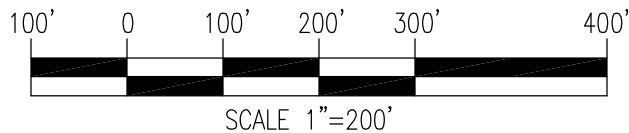
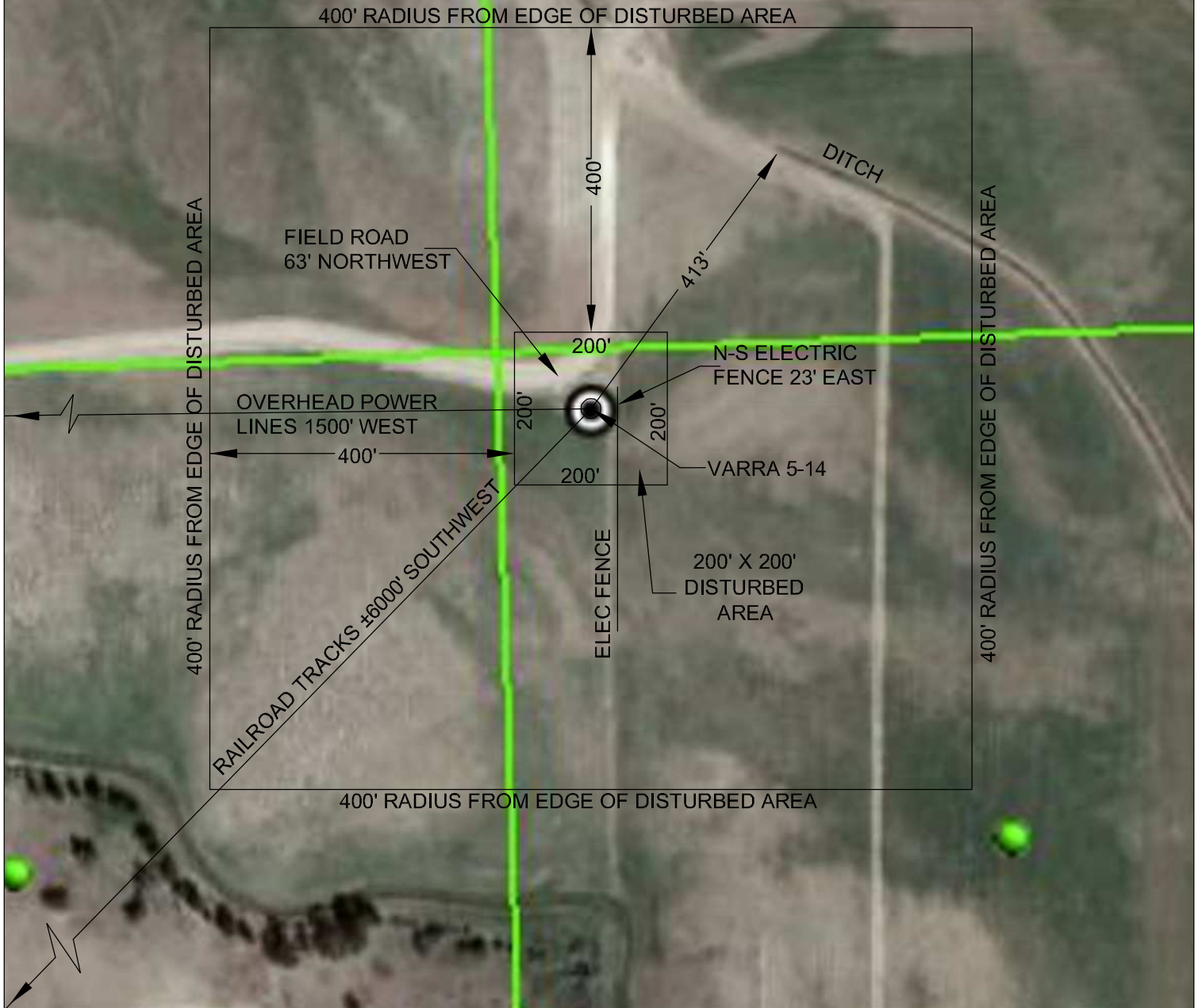


LOCATION DRAWING
VARRA 5-14
SE1/4SW1/4 SECTION 5
TOWNSHIP 6 NORTH
RANGE 67 WEST, WELD COUNTY



PREPARED FOR:

Energy & Exploration Partners

SE1/4SW1/4 SECTION 5
TOWNSHIP 6 NORTH
RANGE 67 WEST, WELD COUNTY

VARRA 5-14
400' IMPROVEMENTS

501-12-191B

POWERTM
Surveying Company, Inc.
Established 1948

120 W. 84TH AVENUE
THORNTON, COLORADO 80260

PH, 303-702-1617
FAX, 303-702-1488
WWW.POWERSURVEYING.COM