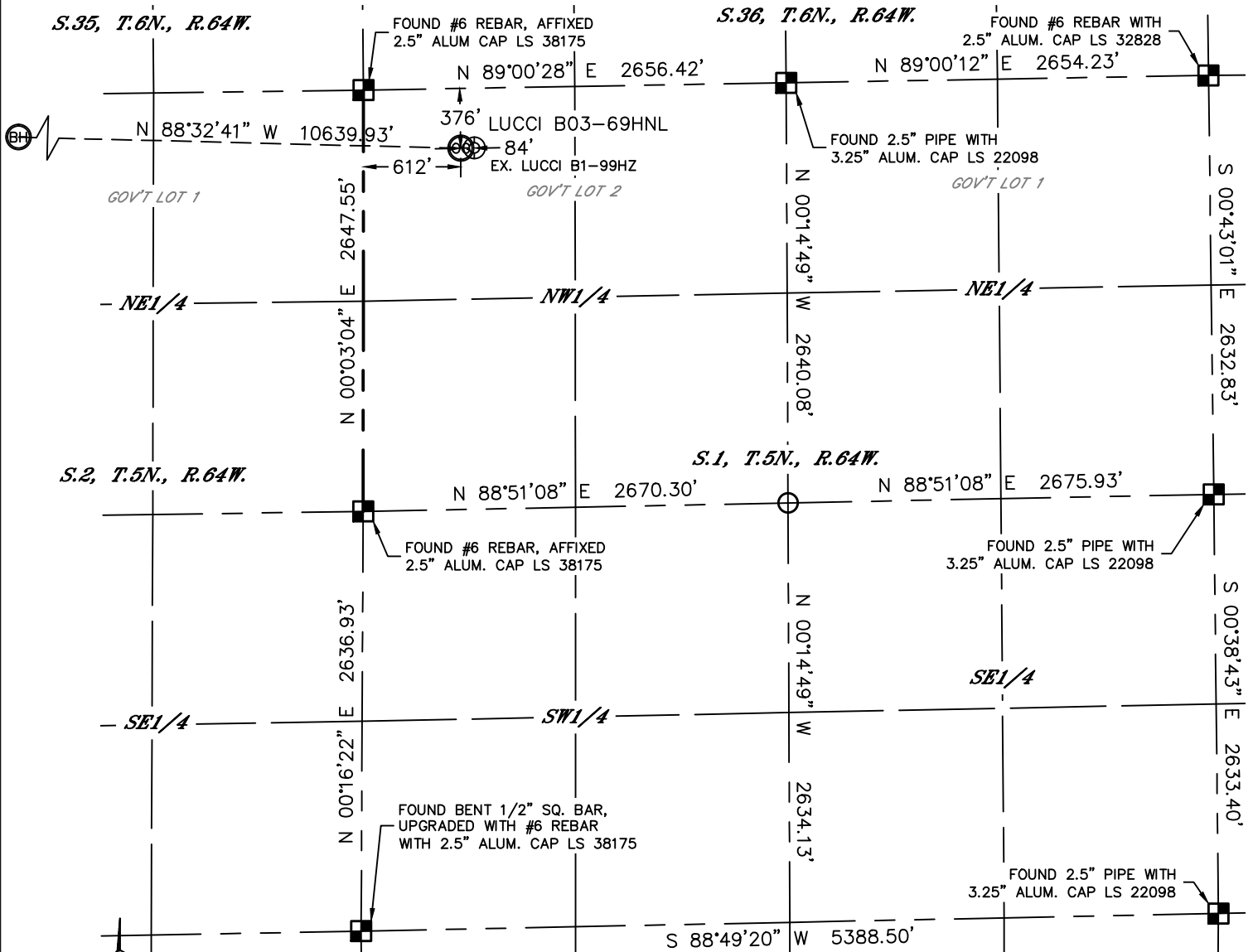


WELL LOCATION CERTIFICATE

SECTION: 1
TOWNSHIP: 5N
RANGE: 64W

THIS MAP DOES NOT REPRESENT A BOUNDARY SURVEY



In accordance with a request from Mike Rodine with Noble Energy Inc. Lat40°, Inc. has determined the surface location of the LUCCI B03-69HNL to be 376' from the NORTH line and 612' from the WEST line as measured at right angles from the section lines of Section 1, Township 5 North, Range 64 West and the bottom hole to be 75' from the SOUTH line and 535' from the WEST line as measured at right angles from the section lines of Section 34, Township 6 North, Range 64 West of the Sixth Principal Meridian, County of Weld, State of Colorado.

I hereby state that this Well Location Certificate was prepared by me, or under my direct supervision, that the fieldwork was completed on 4/2/2012, for and on behalf of Noble Energy Inc. That this is not a Land Survey Plat or an Improvement Survey Plat, and that it is not to be relied upon for establishment of fence, building, or other future improvement lines.

SURFACE LOCATION

LAT: 40.43464°N
LONG: 104.50564°W
PDOP: 1.6
ELEV: 4617'
1/4, 1/4: NW1/4NW1/4 (GOV'T. LOT 2)
NEAREST PROPERTY LINE: 376' NORTH

BOTTOM HOLE

LAT: 40.43570°N
LONG: 104.54383°W

NOTE:

- 1) Bearings shown are Grid Bearings of the Colorado State Plane Coordinate System, North Zone, North American Datum 1983/2007. The lineal dimensions as contained herein are based upon the "U.S. Survey Foot."
- 2) Ground elevations are based on an observed GPS elevation (NAVD 1988 DATUM).
- 3) NEAREST EXISTING WELL: EX. LUCCI B1-99HZ, 84'
- 4) IMPROVEMENTS: See LOCATION DRAWING for all visible improvements within 400' of disturbed area.
- 5) SURFACE USE: EX. DRILL PAD LOCATION/RANGELAND
- 6) INSTRUMENT OPERATOR: ADAM KELLY

NOTE

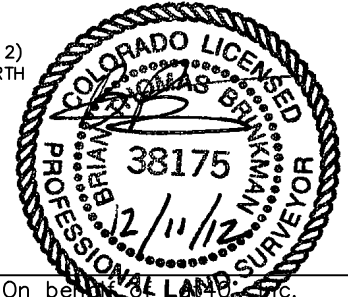
According to Colorado law, you must commence any legal action based upon any defect in this W.L.C. within three years after you discover such defect. In no event, may any action based upon any defect in this survey be commenced more than ten years after the date of the certificate shown hereon. (13-80-105 C.R.S.)

LEGEND

- = ALIQUOT MONUMENT AS DESCRIBED
- = CALCULATED POSITION

SHEET 1 OF 3

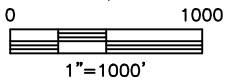
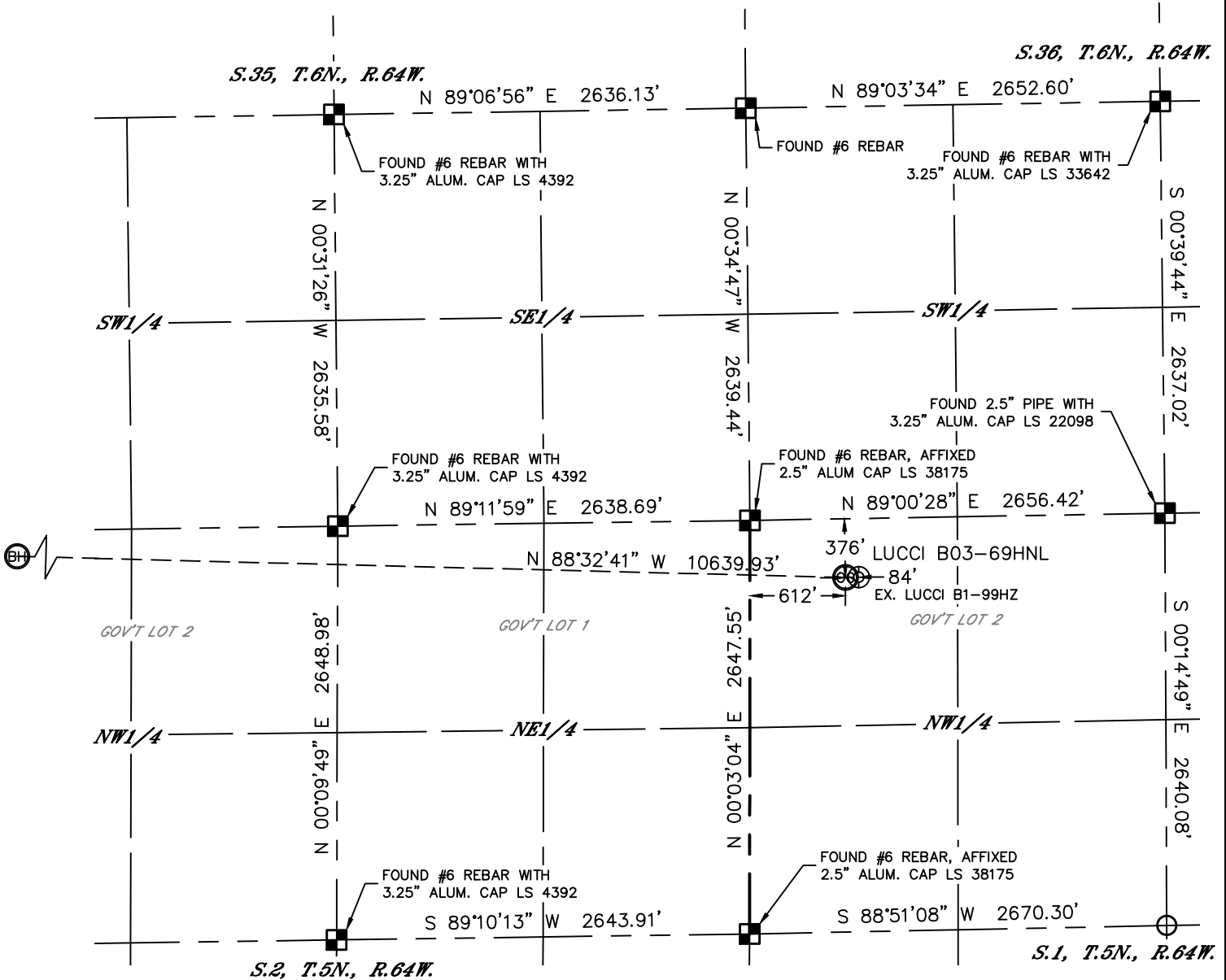
Brian T. Brinkman—On behalf of Lat40°, Inc.
Colorado Licensed Professional Land Surveyor No. 38175
DATE: rev 12/11/12
PROJECT#: 2012029



WELL LOCATION CERTIFICATE

THIS MAP DOES NOT REPRESENT A BOUNDARY SURVEY



SECTION: 1
TOWNSHIP: 5N
RANGE: 64W



NOTE

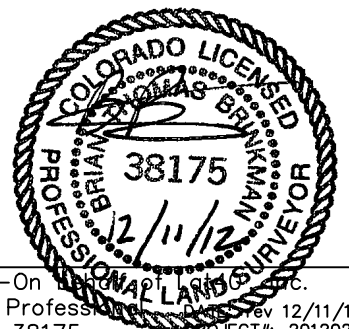
According to Colorado law, you must commence any legal action based upon any defect in this W.L.C. within three years after you discover such defect. In no event, may any action based upon any defect in this survey be commenced more than ten years after the date of the certificate shown hereon. (13-80-105 C.R.S.)

LEGEND

-  = ALIQUOT MONUMENT AS DESCRIBED
-  = CALCULATED POSITION

SHEET 2 OF 3

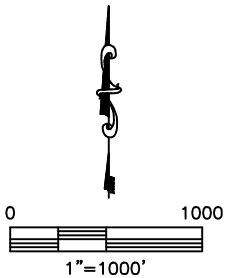
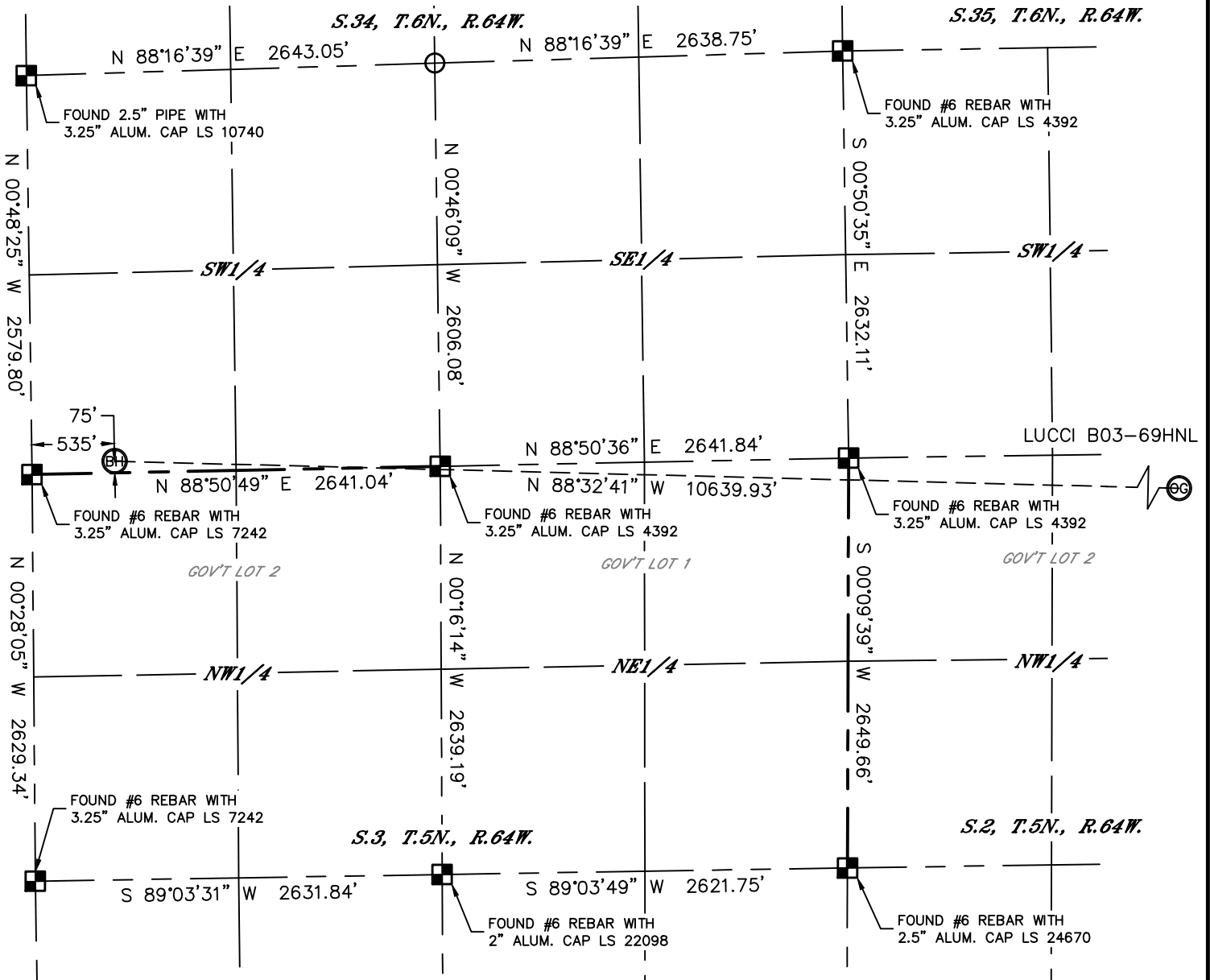
Brian T. Brinkman—On Land Survey
Colorado Licensed Professional Land Surveyor
Land Surveyor No. 38175
PROJECT#: 2012029



WELL LOCATION CERTIFICATE

THIS MAP DOES NOT REPRESENT A BOUNDARY SURVEY

SECTION: 1
TOWNSHIP: 5N
RANGE: 64W

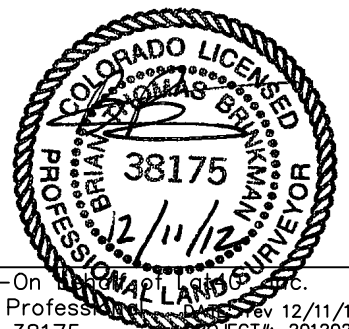


NOTE
According to Colorado law, you must commence any legal action based upon any defect in this W.L.C. within three years after you discover such defect. In no event, may any action based upon any defect in this survey be commenced more than ten years after the date of the certificate shown hereon. (13-80-105 C.R.S.)

LEGEND
 = ALIQUOT MONUMENT AS DESCRIBED
 = CALCULATED POSITION

SHEET 3 OF 3

Brian T. Brinkman—On behalf of Lat40°, Inc.
Colorado Licensed Professional Land Surveyor No. 38175
PROJECT#: 2012029

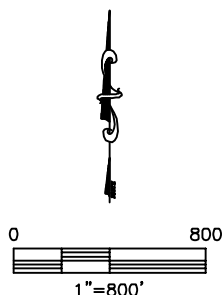
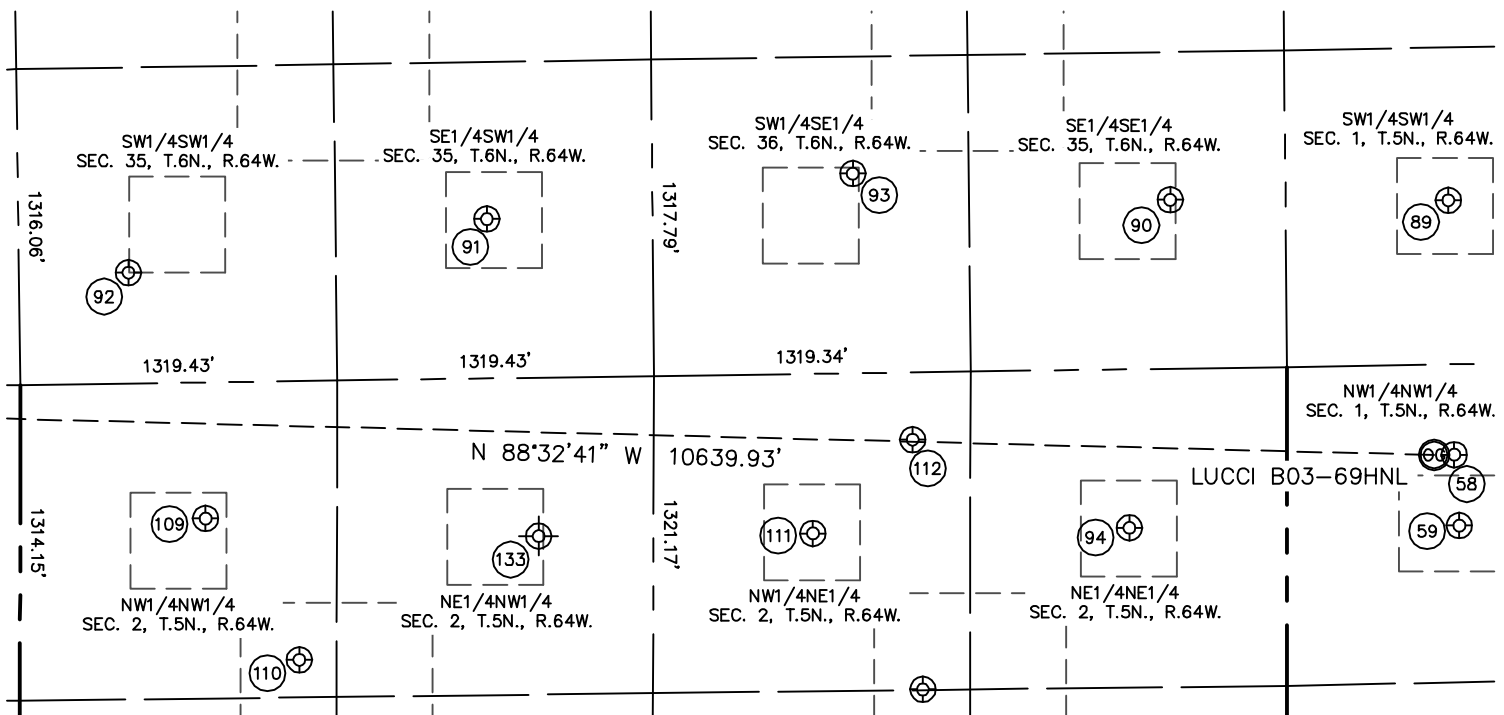
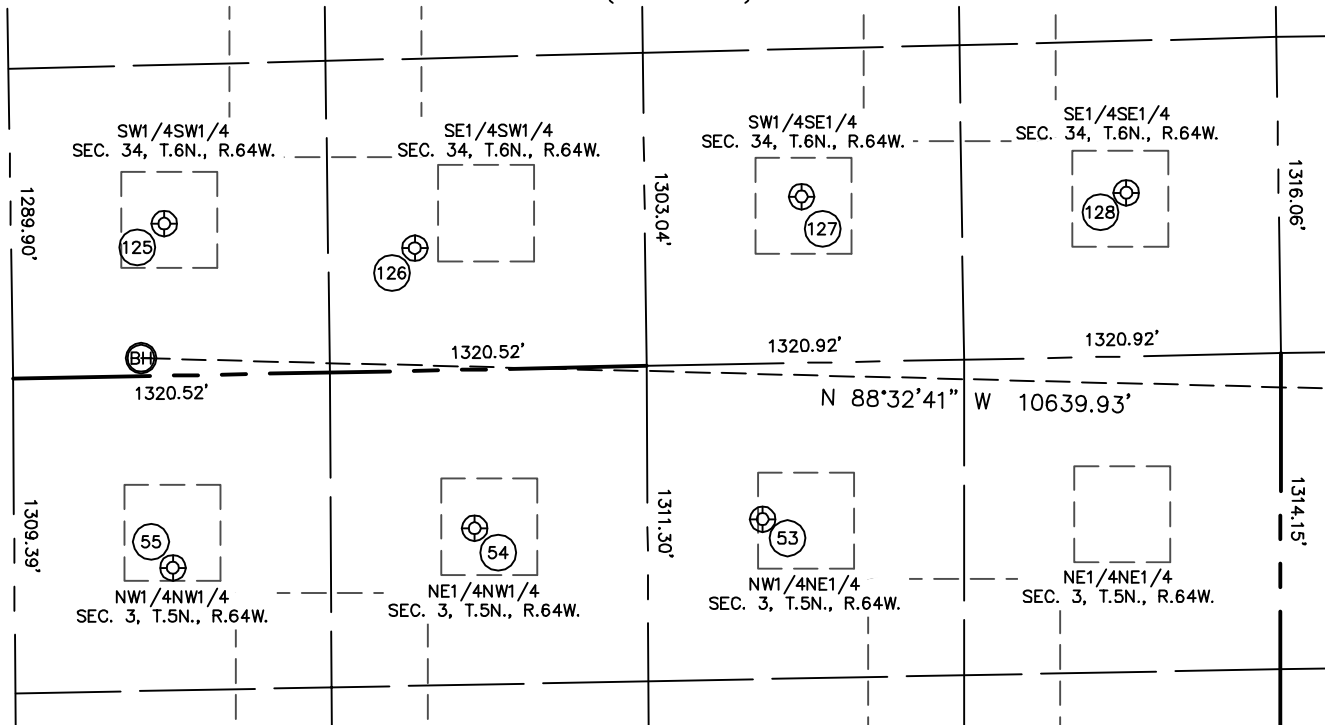


SITE SKETCH

LUCCI B03-69HNL

(1 OF 2)

SECTION: 1
TOWNSHIP: 5N
RANGE: 64W



SITE SKETCH

LUCCI B03-69HNL

(2 OF 2)

SECTION: 1
TOWNSHIP: 5N
RANGE: 64W

53

CLEMONS 2-3
NW1/4NE1/4
647' FNL
2157' FEL
LAT-40.43379°N
LONG-104.53455°W
PDOP: 1.8
ELEV: 4642'

54

STOUT 3-3
NE1/4NW1/4
660' FNL
1918' FWL
LAT-40.43372°N
LONG-104.53886°W
PDOP: 1.9
ELEV: 4627'

55

GRANADOS 4-3
NW1/4NW1/4
799' FNL
660' FWL
LAT-40.43331°N
LONG-104.54338°W
PDOP: 1.7
ELEV: 4624'

58

LUCCI B1-99HZ
NW1/4NW1/4
376' FNL
696' FWL
LAT-40.43464°N
LONG-104.50533°W
PDOP: 1.8
ELEV: 4617'

59

LUCCI B1-4
NW1/4NW1/4
672' FNL
717' FWL
LAT-40.43383°N
LONG-104.50527°W
PDOP: 2.8
ELEV: 4616'

89

STATE A36-13
SW1/4SW1/4
683' FSL
678' FWL
LAT-40.43755°N
LONG-104.50538°W
PDOP: 1.3
ELEV: 4619'

90

HOFFNER 44-35
SE1/4SE1/4
704' FSL
481' FEL
LAT-40.43759°N
LONG-104.50954°W
PDOP: 1.2
ELEV: 4621'

91

HOFFNER 24-35
SE1/4SW1/4
644' FSL
1952' FWL
LAT-40.43746°N
LONG-104.51977°W
PDOP: 1.1
ELEV: 4620'

92

HOFFNER 14-35
SW1/4SW1/4
462' FSL
456' FWL
LAT-40.43689°N
LONG-104.52514°W
PDOP: 1.4
ELEV: 4648'

93

HOFFNER 34-35
SW1/4SE1/4
831' FSL
1802' FEL
LAT-40.43793°N
LONG-104.51429°W
PDOP: 1.7
ELEV: 4612'

94

MEYER B2-1
NE1/4NE1/4
660' FNL
657' FEL
LAT-40.43384°N
LONG-104.51021°W
PDOP: 1.2
ELEV: 4608'

109

BAKER B2-4
NW1/4NW1/4
567' FNL
772' FWL
LAT-40.43407°N
LONG-104.52403°W
PDOP: 1.4
ELEV: 4638'

110

FRITZLER B02-19
NW1/4NW1/4
1161' FNL
1164' FWL
LAT-40.43244°N
LONG-104.52265°W
PDOP: 1.1
ELEV: 4629'

111

FOE B2-2
NW1/4NE1/4
665' FNL
1976' FEL
LAT-40.43382°N
LONG-104.51494°W
PDOP: 1.6
ELEV: 4612'

112

FOE A35-73HN
NW1/4NE1/4
280' FNL
1561' FEL
LAT-40.43488°N
LONG-104.51344°W
PDOP: 1.1
ELEV: 4611'

133

FRITZLER B2-3
(Plugged & Abandoned)
NE1/4NW1/4
660' FNL (COGCC)
2160' FWL (COGCC)
LAT-40.433805°N (COGCC)
LONG-104.519204°W (COGCC)
PDOP: N/A
ELEV: 4612' (COGCC)

125

PETRIKIN A34-13
SW1/4SW1/4
633' FSL
640' FWL
LAT-40.43724°N
LONG-104.54346°W
PDOP: 1.6
ELEV: 4634'

126

PETRIKIN A34-14
SE1/4SW1/4
510' FSL
1682' FWL
LAT-40.43693°N
LONG-104.53971°W
PDOP: 1.1
ELEV: 4636'

127

PETRIKIN A34-15
SW1/4SE1/4
692' FSL
1987' FEL
LAT-40.43747°N
LONG-104.53392°W
PDOP: 1.6
ELEV: 4646'

128

PETRIKIN A34-16
SE1/4SE1/4
681' FSL
634' FEL
LAT-40.43747°N
LONG-104.52906°W
PDOP: 1.2
ELEV: 4664'