

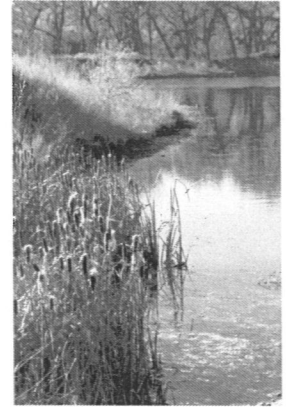
Savage and Savage *Environmental*

practical solutions for environmental issues

4610 Haystack Drive
Windsor, Colorado 80550

970 674 8080 telephone
970 674 8088 facsimile

savageandsavage@earthlink.net



July 13, 2012

Cody Ball
Noble Energy, Inc.
2115 117th Avenue
Greeley, Colorado 80634

RE: Noble Energy, Inc., Heath AC 10-14, Swainson's Hawk Nest Distance and Seasonal Restrictions

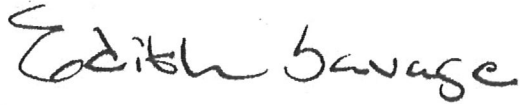
Dear Mr. Ball:

Savage and Savage conducted a site investigation at the proposed Heath AC 10-14 drill pad on July 11, 2012 in order to determine the presence or absence of a hawk nest in the area. From Greeley, the site is accessed by traveling north on U.S. Highway 85 to State Highway 392, east on State Highway 392 to the intersection of State Highway 392, and Weld County Roads 74 and 69 (Cornish), north on Weld County Road 69 for approximately four miles, west along the section line on an undeveloped oil and gas road for approximately 0.25 miles to the site. The site is located within SE $\frac{1}{4}$ SW $\frac{1}{4}$ Section 10, Township 7 North, Range 63 West of the 6th Prime Meridian, Weld County, Colorado.

One Chinese elm that is approximately 10' feet tall is located in the area of the drill pad. A Swainson's hawk was identified flying away from the tree. A nest within the tree contained one immature Swainson's hawk in down. The drill pad will be situated approximately 300' southwest of the nest tree. The Division of Parks and Wildlife recommends no surface occupancy within $\frac{1}{4}$ mile radius of an active Swainson's hawk

nest from April 1 through July 15. The nest identified near the Heath drill pad is within the ¼ mile radius and may remain active for a number of weeks. We recommend a follow up site visit by Savage and Savage in mid August to determine if the young hawk has fledged and insure the nest is inactive prior to development of this project site.

Sincerely,

A handwritten signature in black ink that reads "Edith Savage". The signature is written in a cursive, flowing style.

Edith Savage
Principal

attachment: Heath AC 10-14 Drill Pad General Location Map