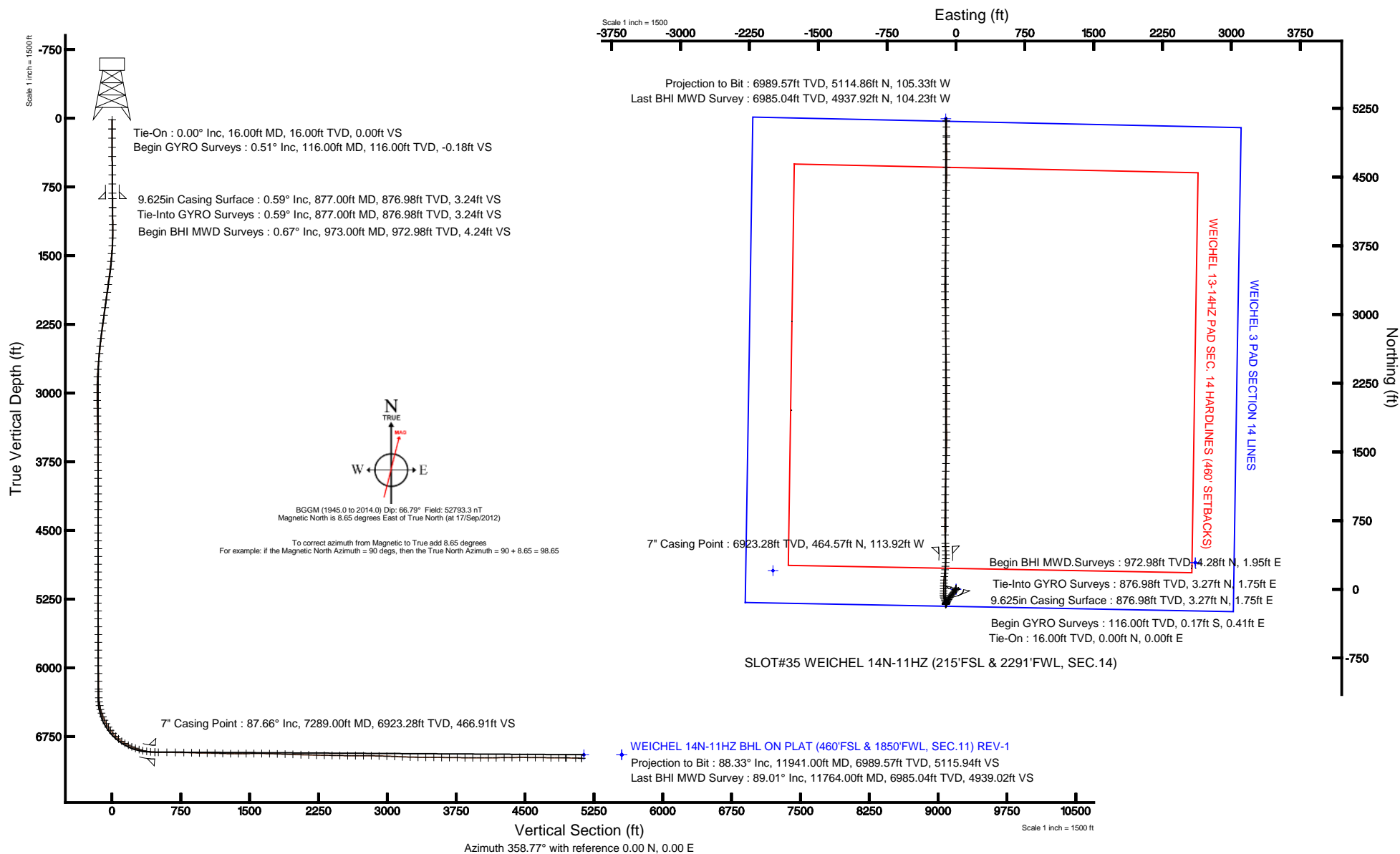


# KERR-MCGEE OIL & GAS ONSHORE LP

Location: COLORADO Slot: SLOT#35 WEICHEL 14N-11HZ (215'FSL & 2291'FWL, SEC.14)  
 Field: WELD COUNTY (KERR MCGEE) Well: WEICHEL 14N-11HZ  
 Facility: SEC.14-T2N-R65W Wellbore: WEICHEL 14N-11HZ PWB

Plot reference wellpath is WEICHEL 14N-11HZ (REV-E.0) PWP

True vertical depths are referenced to XTREME 20 (RKB)	Grid System: NAD83 / Lambert Colorado SP, Northern Zone (501), US feet
Measured depths are referenced to XTREME 20 (RKB)	North Reference: True north
XTREME 20 (RKB) to Mean Sea Level: 4901 feet	Scale: True distance
Mean Sea Level to Mud line (At Slot: SLOT#35 WEICHEL 14N-11HZ (215'FSL & 2291'FWL, SEC.14)): 0 feet	Depths are in feet
Coordinates are in feet referenced to Slot	Created by: augunora on 04/Oct/2012





# Actual Wellpath Report

WEICHEL 14N-11HZ AWP

Page 1 of 7



## REFERENCE WELLPATH IDENTIFICATION

Operator	KERR-MCGEE OIL & GAS ONSHORE LP	Slot	SLOT#35 WEICHEL 14N-11HZ (215'FSL & 2291'FWL, SEC.14)
Area	COLORADO	Well	WEICHEL 14N-11HZ
Field	WELD COUNTY (KERR MCGEE)	Wellbore	WEICHEL 14N-11HZ AWB
Facility	SEC.14-T2N-R65W		

## REPORT SETUP INFORMATION

Projection System	NAD83 / Lambert Colorado SP, Northern Zone (501), US feet	Software System	WellArchitect® 3.0.0
North Reference	True	User	Augunora
Scale	0.999959	Report Generated	04/Oct/2012 at 15:30
Convergence at slot	0.56° East	Database/Source file	WA_ANADARKO/WEICHEL_14N-11HZ_AWB.xml

## WELLPATH LOCATION

	Local coordinates		Grid coordinates		Geographic coordinates	
	North[ft]	East[ft]	Easting[US ft]	Northing[US ft]	Latitude	Longitude
Slot Location	-4434.59	259.20	3242575.22	1292084.07	40°07'54.865"N	104°37'56.795"W
Facility Reference Pt			3242272.71	1296515.72	40°08'38.688"N	104°38'00.132"W
Field Reference Pt			3197771.84	1268891.29	40°04'09.600"N	104°47'36.000"W

## WELLPATH DATUM

Calculation method	Minimum curvature	XTREME 20 (RKB) to Facility Vertical Datum	4901.00ft
Horizontal Reference Pt	Slot	XTREME 20 (RKB) to Mean Sea Level	4901.00ft
Vertical Reference Pt	XTREME 20 (RKB)	XTREME 20 (RKB) to Mud Line at Slot (SLOT#35 WEICHEL 14N-11HZ (215'FSL & 2291'FWL, SEC.14))	4901.00ft
MD Reference Pt	XTREME 20 (RKB)	Section Origin	N 0.00, E 0.00 ft
Field Vertical Reference	Mean Sea Level	Section Azimuth	358.82°



# Actual Wellpath Report

WEICHEL 14N-11HZ AWP

Page 2 of 7



## REFERENCE WELLPATH IDENTIFICATION

Operator	KERR-MCGEE OIL & GAS ONSHORE LP	Slot	SLOT#35 WEICHEL 14N-11HZ (215'FSL & 2291'FWL, SEC.14)
Area	COLORADO	Well	WEICHEL 14N-11HZ
Field	WELD COUNTY (KERR MCGEE)	Wellbore	WEICHEL 14N-11HZ AWB
Facility	SEC.14-T2N-R65W		

## WELLPATH DATA (155 stations) † = interpolated/extrapolated station

MD [ft]	Inclination [°]	Azimuth [°]	TVD [ft]	Vert Sect [ft]	North [ft]	East [ft]	Latitude	Longitude	DLS [°/100ft]	Comments
0.00†	0.000	112.410	0.00	0.00	0.00	0.00	40°07'54.865"N	104°37'56.795"W	0.00	
16.00	0.000	112.410	16.00	0.00	0.00	0.00	40°07'54.865"N	104°37'56.795"W	0.00	Tie-On
116.00	0.510	112.410	116.00	-0.18	-0.17	0.41	40°07'54.863"N	104°37'56.790"W	0.51	Begin GYRO Surveys
216.00	0.120	92.760	216.00	-0.36	-0.34	0.93	40°07'54.862"N	104°37'56.783"W	0.40	
316.00	0.230	22.690	316.00	-0.19	-0.16	1.11	40°07'54.863"N	104°37'56.781"W	0.22	
416.00	0.310	20.340	416.00	0.25	0.27	1.28	40°07'54.868"N	104°37'56.779"W	0.08	
516.00	0.490	18.810	515.99	0.90	0.93	1.51	40°07'54.874"N	104°37'56.776"W	0.18	
616.00	0.220	31.680	615.99	1.46	1.50	1.75	40°07'54.880"N	104°37'56.772"W	0.28	
716.00	0.520	354.120	715.99	2.08	2.12	1.81	40°07'54.886"N	104°37'56.772"W	0.37	
816.00	0.280	1.140	815.99	2.77	2.81	1.76	40°07'54.893"N	104°37'56.772"W	0.24	
877.00	0.590	357.130	876.98	3.24	3.27	1.75	40°07'54.897"N	104°37'56.772"W	0.51	Tie-Into GYRO Surveys
973.00†	0.669	23.447	972.98	4.24	4.28	1.95	40°07'54.907"N	104°37'56.770"W	0.31	Begin BHI MWD Surveys
974.00	0.670	23.680	973.98	4.25	4.29	1.95	40°07'54.907"N	104°37'56.770"W	0.31	
1067.00	0.570	37.020	1066.97	5.11	5.16	2.45	40°07'54.916"N	104°37'56.763"W	0.19	
1158.00	0.910	35.950	1157.97	6.04	6.11	3.15	40°07'54.925"N	104°37'56.754"W	0.37	
1219.00	0.400	260.600	1218.96	6.40	6.46	3.22	40°07'54.929"N	104°37'56.754"W	2.01	
1307.00	2.250	214.570	1306.94	4.95	4.99	1.94	40°07'54.914"N	104°37'56.770"W	2.26	
1392.00	3.730	210.290	1391.82	1.24	1.23	-0.40	40°07'54.877"N	104°37'56.800"W	1.76	
1477.00	5.710	214.370	1476.53	-4.56	-4.65	-4.18	40°07'54.819"N	104°37'56.849"W	2.36	
1563.00	7.110	216.980	1561.99	-12.23	-12.43	-9.80	40°07'54.742"N	104°37'56.921"W	1.66	
1648.00	8.730	219.550	1646.17	-21.25	-21.61	-17.07	40°07'54.651"N	104°37'57.015"W	1.95	
1733.00	10.210	219.430	1730.01	-31.86	-32.40	-25.97	40°07'54.545"N	104°37'57.129"W	1.74	
1818.00	10.150	219.160	1813.68	-43.29	-44.03	-35.48	40°07'54.430"N	104°37'57.252"W	0.09	
1904.00	9.770	217.090	1898.38	-54.79	-55.72	-44.67	40°07'54.314"N	104°37'57.370"W	0.61	
1989.00	9.630	215.540	1982.16	-66.15	-67.26	-53.15	40°07'54.200"N	104°37'57.479"W	0.35	
2074.00	9.020	214.380	2066.04	-77.27	-78.55	-61.04	40°07'54.089"N	104°37'57.581"W	0.75	
2159.00	9.090	209.830	2149.98	-88.45	-89.87	-68.15	40°07'53.977"N	104°37'57.672"W	0.85	
2245.00	9.010	212.650	2234.91	-99.87	-101.43	-75.16	40°07'53.863"N	104°37'57.763"W	0.52	
2330.00	8.070	210.190	2318.97	-110.49	-112.20	-81.75	40°07'53.756"N	104°37'57.847"W	1.19	
2415.00	7.650	210.960	2403.17	-120.37	-122.20	-87.66	40°07'53.657"N	104°37'57.924"W	0.51	
2500.00	7.760	207.810	2487.40	-130.18	-132.13	-93.25	40°07'53.559"N	104°37'57.996"W	0.51	
2582.00	6.850	206.380	2568.74	-139.36	-141.41	-98.00	40°07'53.468"N	104°37'58.057"W	1.13	
2670.00	5.780	203.630	2656.20	-148.04	-150.17	-102.11	40°07'53.381"N	104°37'58.110"W	1.26	
2754.00	4.670	206.370	2739.85	-154.91	-157.11	-105.33	40°07'53.312"N	104°37'58.151"W	1.35	
2838.00	3.010	217.430	2823.66	-159.66	-161.93	-108.19	40°07'53.265"N	104°37'58.188"W	2.16	
2924.00	1.800	224.920	2909.58	-162.36	-164.68	-110.51	40°07'53.238"N	104°37'58.218"W	1.45	
3009.00	0.490	270.520	2994.57	-163.28	-165.62	-111.82	40°07'53.228"N	104°37'58.235"W	1.76	
3094.00	0.680	328.390	3079.56	-162.83	-165.18	-112.45	40°07'53.233"N	104°37'58.243"W	0.69	
3179.00	0.850	338.200	3164.56	-161.81	-164.17	-112.94	40°07'53.243"N	104°37'58.249"W	0.25	
3265.00	1.000	356.180	3250.54	-160.46	-162.83	-113.23	40°07'53.256"N	104°37'58.253"W	0.38	
3350.00	1.110	23.170	3335.53	-158.97	-161.33	-112.96	40°07'53.271"N	104°37'58.249"W	0.59	
3435.00	0.970	18.190	3420.52	-157.54	-159.89	-112.41	40°07'53.285"N	104°37'58.242"W	0.20	
3520.00	0.560	18.540	3505.51	-156.47	-158.81	-112.05	40°07'53.296"N	104°37'58.238"W	0.48	
3605.00	0.040	326.360	3590.51	-156.06	-158.39	-111.94	40°07'53.300"N	104°37'58.236"W	0.63	
3691.00	0.520	22.630	3676.51	-155.67	-158.01	-111.80	40°07'53.304"N	104°37'58.234"W	0.58	



# Actual Wellpath Report

WEICHEL 14N-11HZ AWP

Page 3 of 7



## REFERENCE WELLPATH IDENTIFICATION

Operator	KERR-MCGEE OIL & GAS ONSHORE LP	Slot	SLOT#35 WEICHEL 14N-11HZ (215'FSL & 2291'FWL, SEC.14)
Area	COLORADO	Well	WEICHEL 14N-11HZ
Field	WELD COUNTY (KERR MCGEE)	Wellbore	WEICHEL 14N-11HZ AWB
Facility	SEC.14-T2N-R65W		

## WELLPATH DATA (155 stations)

MD [ft]	Inclination [°]	Azimuth [°]	TVD [ft]	Vert Sect [ft]	North [ft]	East [ft]	Latitude	Longitude	DLS [°/100ft]	Comments
3776.00	0.710	25.570	3761.50	-154.85	-157.18	-111.43	40°07'53.312"N	104°37'58.230"W	0.23	
3861.00	0.400	347.280	3846.50	-154.09	-156.41	-111.26	40°07'53.319"N	104°37'58.227"W	0.55	
3947.00	0.400	342.900	3932.50	-153.51	-155.83	-111.42	40°07'53.325"N	104°37'58.229"W	0.04	
4032.00	0.450	7.660	4017.49	-152.89	-155.22	-111.46	40°07'53.331"N	104°37'58.230"W	0.22	
4117.00	0.190	352.480	4102.49	-152.42	-154.75	-111.44	40°07'53.336"N	104°37'58.230"W	0.32	
4202.00	0.460	33.700	4187.49	-152.00	-154.33	-111.27	40°07'53.340"N	104°37'58.227"W	0.40	
4287.00	0.350	196.840	4272.49	-151.97	-154.29	-111.15	40°07'53.340"N	104°37'58.226"W	0.94	
4373.00	0.340	195.310	4358.49	-152.46	-154.79	-111.29	40°07'53.335"N	104°37'58.228"W	0.02	
4458.00	0.170	204.000	4443.49	-152.82	-155.15	-111.41	40°07'53.332"N	104°37'58.229"W	0.20	
4543.00	0.220	1.830	4528.49	-152.77	-155.10	-111.46	40°07'53.332"N	104°37'58.230"W	0.45	
4629.00	0.360	18.090	4614.49	-152.35	-154.68	-111.37	40°07'53.336"N	104°37'58.229"W	0.19	
4714.00	0.220	232.160	4699.49	-152.20	-154.52	-111.42	40°07'53.338"N	104°37'58.229"W	0.65	
4799.00	0.040	295.920	4784.48	-152.28	-154.61	-111.57	40°07'53.337"N	104°37'58.231"W	0.24	
4884.00	0.560	177.760	4869.48	-152.68	-155.01	-111.58	40°07'53.333"N	104°37'58.232"W	0.68	
4970.00	0.780	122.870	4955.48	-153.43	-155.75	-111.07	40°07'53.326"N	104°37'58.225"W	0.75	
5055.00	0.950	89.620	5040.47	-153.76	-156.06	-109.88	40°07'53.323"N	104°37'58.210"W	0.61	
5140.00	0.240	145.320	5125.46	-153.92	-156.20	-109.08	40°07'53.321"N	104°37'58.199"W	0.99	
5226.00	0.990	235.980	5211.46	-154.48	-156.76	-109.59	40°07'53.316"N	104°37'58.206"W	1.19	
5311.00	0.570	270.330	5296.45	-154.86	-157.17	-110.62	40°07'53.312"N	104°37'58.219"W	0.72	
5396.00	0.590	342.650	5381.45	-154.43	-156.75	-111.17	40°07'53.316"N	104°37'58.226"W	0.81	
5481.00	1.380	7.480	5466.44	-153.00	-155.32	-111.17	40°07'53.330"N	104°37'58.226"W	1.04	
5567.00	0.640	287.880	5552.43	-151.82	-154.15	-111.49	40°07'53.342"N	104°37'58.230"W	1.64	
5652.00	0.590	276.510	5637.42	-151.60	-153.95	-112.38	40°07'53.344"N	104°37'58.242"W	0.15	
5737.00	0.190	291.180	5722.42	-151.49	-153.85	-112.95	40°07'53.345"N	104°37'58.249"W	0.48	
5822.00	0.740	39.540	5807.42	-151.02	-153.38	-112.73	40°07'53.349"N	104°37'58.246"W	0.96	
5908.00	0.460	104.900	5893.41	-150.70	-153.04	-112.04	40°07'53.353"N	104°37'58.237"W	0.80	
5993.00	1.300	65.960	5978.40	-150.42	-152.73	-110.83	40°07'53.356"N	104°37'58.222"W	1.16	
6078.00	2.060	58.640	6063.36	-149.27	-151.54	-108.65	40°07'53.367"N	104°37'58.194"W	0.93	
6163.00	2.200	71.240	6148.31	-148.01	-150.22	-105.80	40°07'53.380"N	104°37'58.157"W	0.57	
6249.00	0.800	38.680	6234.28	-147.05	-149.22	-103.86	40°07'53.390"N	104°37'58.132"W	1.84	
6277.00	0.650	24.410	6262.27	-146.76	-148.93	-103.67	40°07'53.393"N	104°37'58.130"W	0.83	
6345.00	2.000	326.760	6330.26	-145.41	-147.58	-104.16	40°07'53.407"N	104°37'58.136"W	2.56	
6388.00	6.790	325.340	6373.12	-142.65	-144.86	-106.02	40°07'53.433"N	104°37'58.160"W	11.14	
6430.00	12.190	324.570	6414.53	-136.91	-139.20	-110.01	40°07'53.489"N	104°37'58.211"W	12.86	
6473.00	16.840	328.520	6456.14	-127.77	-130.19	-115.89	40°07'53.578"N	104°37'58.287"W	11.05	
6515.00	20.840	333.420	6495.89	-115.77	-118.31	-122.42	40°07'53.696"N	104°37'58.371"W	10.23	
6559.00	23.260	342.890	6536.68	-100.34	-103.00	-128.48	40°07'53.847"N	104°37'58.449"W	9.76	
6601.00	26.250	349.310	6574.82	-83.19	-85.94	-132.64	40°07'54.016"N	104°37'58.503"W	9.56	
6644.00	29.160	356.060	6612.90	-63.34	-66.14	-135.13	40°07'54.211"N	104°37'58.535"W	9.94	
6686.00	32.740	2.730	6648.92	-41.78	-44.57	-135.29	40°07'54.425"N	104°37'58.537"W	11.79	
6729.00	35.940	1.850	6684.42	-17.57	-20.34	-134.33	40°07'54.664"N	104°37'58.524"W	7.53	
6771.00	40.360	1.050	6717.45	8.34	5.59	-133.68	40°07'54.920"N	104°37'58.516"W	10.59	
6815.00	45.160	0.550	6749.74	38.19	35.45	-133.27	40°07'55.215"N	104°37'58.511"W	10.94	
6857.00	50.380	2.350	6777.96	69.24	66.53	-132.46	40°07'55.522"N	104°37'58.500"W	12.83	
6900.00	55.060	3.680	6804.00	103.35	100.68	-130.65	40°07'55.860"N	104°37'58.477"W	11.16	



# Actual Wellpath Report

WEICHEL 14N-11HZ AWP

Page 4 of 7



## REFERENCE WELLPATH IDENTIFICATION

Operator	KERR-MCGEE OIL & GAS ONSHORE LP	Slot	SLOT#35 WEICHEL 14N-11HZ (215'FSL & 2291'FWL, SEC.14)
Area	COLORADO	Well	WEICHEL 14N-11HZ
Field	WELD COUNTY (KERR MCGEE)	Wellbore	WEICHEL 14N-11HZ AWB
Facility	SEC.14-T2N-R65W		

## WELLPATH DATA (155 stations) † = interpolated/extrapolated station

MD [ft]	Inclination [°]	Azimuth [°]	TVD [ft]	Vert Sect [ft]	North [ft]	East [ft]	Latitude	Longitude	DLS [°/100ft]	Comments
6943.00	59.860	6.360	6827.13	139.37	136.78	-127.46	40°07'56.217"N	104°37'58.436"W	12.34	
6985.00	63.930	5.940	6846.91	176.11	173.60	-123.49	40°07'56.581"N	104°37'58.385"W	9.73	
7028.00	67.050	6.760	6864.74	214.89	212.48	-119.16	40°07'56.965"N	104°37'58.329"W	7.46	
7070.00	68.910	5.060	6880.49	253.53	251.21	-115.16	40°07'57.347"N	104°37'58.278"W	5.80	
7113.00	71.930	3.410	6894.90	293.85	291.61	-112.17	40°07'57.747"N	104°37'58.239"W	7.90	
7155.00	75.920	1.330	6906.53	334.12	331.92	-110.51	40°07'58.145"N	104°37'58.218"W	10.62	
7199.00	81.630	359.110	6915.09	377.25	375.06	-110.35	40°07'58.571"N	104°37'58.216"W	13.89	
7241.00	84.710	357.290	6920.09	418.94	416.73	-111.66	40°07'58.983"N	104°37'58.233"W	8.50	
7289.00†	87.663	357.301	6923.28	466.81	464.57	-113.92	40°07'59.456"N	104°37'58.262"W	6.15	7" Casing Point
7326.00	89.940	357.310	6924.05	503.79	501.51	-115.66	40°07'59.821"N	104°37'58.284"W	6.15	
7418.00	89.260	357.930	6924.69	595.77	593.43	-119.48	40°08'00.729"N	104°37'58.333"W	1.00	
7510.00	89.290	0.080	6925.86	687.75	685.40	-121.08	40°08'01.638"N	104°37'58.354"W	2.34	
7602.00	89.110	0.640	6927.14	779.71	777.39	-120.50	40°08'02.547"N	104°37'58.346"W	0.64	
7687.00	88.430	359.720	6928.97	864.66	862.37	-120.23	40°08'03.387"N	104°37'58.343"W	1.35	
7772.00	88.370	0.860	6931.34	949.60	947.34	-119.80	40°08'04.227"N	104°37'58.337"W	1.34	
7858.00	89.010	1.440	6933.31	1035.51	1033.30	-118.08	40°08'05.076"N	104°37'58.315"W	1.00	
7943.00	88.730	1.100	6934.98	1120.41	1118.26	-116.20	40°08'05.916"N	104°37'58.291"W	0.52	
8028.00	88.210	1.030	6937.25	1205.32	1203.21	-114.62	40°08'06.755"N	104°37'58.271"W	0.62	
8113.00	89.010	2.170	6939.31	1290.19	1288.15	-112.24	40°08'07.595"N	104°37'58.240"W	1.64	
8198.00	90.800	3.020	6939.46	1375.00	1373.06	-108.40	40°08'08.434"N	104°37'58.191"W	2.33	
8284.00	90.580	1.050	6938.42	1460.86	1459.00	-105.34	40°08'09.283"N	104°37'58.151"W	2.30	
8369.00	89.870	1.480	6938.09	1545.78	1543.97	-103.47	40°08'10.123"N	104°37'58.127"W	0.98	
8454.00	89.900	359.940	6938.26	1630.73	1628.96	-102.41	40°08'10.963"N	104°37'58.114"W	1.81	
8539.00	88.940	359.570	6939.12	1715.71	1713.96	-102.78	40°08'11.802"N	104°37'58.118"W	1.21	
8624.00	87.590	359.290	6941.69	1800.67	1798.91	-103.62	40°08'12.642"N	104°37'58.129"W	1.62	
8709.00	87.930	0.000	6945.01	1885.59	1883.85	-104.15	40°08'13.481"N	104°37'58.136"W	0.93	
8794.00	88.360	359.970	6947.76	1970.53	1968.80	-104.17	40°08'14.321"N	104°37'58.136"W	0.51	
8880.00	87.830	0.840	6950.62	2056.45	2054.75	-103.56	40°08'15.170"N	104°37'58.128"W	1.18	
8965.00	88.520	359.140	6953.33	2141.38	2139.70	-103.58	40°08'16.010"N	104°37'58.129"W	2.16	
9050.00	88.090	359.190	6955.84	2226.34	2224.66	-104.81	40°08'16.849"N	104°37'58.145"W	0.51	
9135.00	89.410	359.980	6957.70	2311.31	2309.63	-105.43	40°08'17.689"N	104°37'58.152"W	1.81	
9221.00	89.410	358.960	6958.58	2397.30	2395.62	-106.23	40°08'18.539"N	104°37'58.163"W	1.19	
9306.00	88.620	359.590	6960.05	2482.29	2480.60	-107.30	40°08'19.379"N	104°37'58.177"W	1.19	
9391.00	89.850	358.980	6961.18	2567.27	2565.59	-108.36	40°08'20.218"N	104°37'58.190"W	1.62	
9476.00	90.220	358.950	6961.13	2652.27	2650.57	-109.90	40°08'21.058"N	104°37'58.210"W	0.44	
9562.00	89.380	358.460	6961.43	2738.27	2736.55	-111.84	40°08'21.908"N	104°37'58.235"W	1.13	
9647.00	89.040	359.600	6962.60	2823.26	2821.53	-113.28	40°08'22.748"N	104°37'58.254"W	1.40	
9732.00	88.610	359.710	6964.34	2908.23	2906.51	-113.79	40°08'23.587"N	104°37'58.260"W	0.52	
9817.00	88.000	358.670	6966.86	2993.19	2991.46	-114.99	40°08'24.427"N	104°37'58.276"W	1.42	
9902.00	87.440	358.850	6970.24	3078.13	3076.37	-116.83	40°08'25.266"N	104°37'58.299"W	0.69	
9988.00	87.810	358.390	6973.80	3164.05	3162.27	-118.90	40°08'26.115"N	104°37'58.326"W	0.69	
10073.00	88.520	359.670	6976.53	3249.00	3247.22	-120.34	40°08'26.954"N	104°37'58.344"W	1.72	
10158.00	88.640	0.250	6978.63	3333.96	3332.19	-120.40	40°08'27.794"N	104°37'58.345"W	0.70	
10243.00	90.090	0.760	6979.57	3418.92	3417.18	-119.65	40°08'28.634"N	104°37'58.336"W	1.81	
10329.00	89.690	0.660	6979.74	3504.87	3503.17	-118.58	40°08'29.484"N	104°37'58.322"W	0.48	



# Actual Wellpath Report

WEICHEL 14N-11HZ AWP

Page 5 of 7



## REFERENCE WELLPATH IDENTIFICATION

Operator	KERR-MCGEE OIL & GAS ONSHORE LP	Slot	SLOT#35 WEICHEL 14N-11HZ (215'FSL & 2291'FWL, SEC.14)
Area	COLORADO	Well	WEICHEL 14N-11HZ
Field	WELD COUNTY (KERR MCGEE)	Wellbore	WEICHEL 14N-11HZ AWB
Facility	SEC.14-T2N-R65W		

## WELLPATH DATA (155 stations) † = interpolated/extrapolated station

MD [ft]	Inclination [°]	Azimuth [°]	TVD [ft]	Vert Sect [ft]	North [ft]	East [ft]	Latitude	Longitude	DLS [°/100ft]	Comments
10414.00	89.040	0.280	6980.68	3589.83	3588.16	-117.88	40°08'30.324"N	104°37'58.313"W	0.89	
10499.00	89.590	1.560	6981.70	3674.76	3673.14	-116.52	40°08'31.163"N	104°37'58.295"W	1.64	
10584.00	89.010	1.070	6982.74	3759.68	3758.11	-114.57	40°08'32.003"N	104°37'58.270"W	0.89	
10670.00	89.350	1.350	6983.97	3845.59	3844.09	-112.75	40°08'32.853"N	104°37'58.247"W	0.51	
10755.00	90.580	359.870	6984.02	3930.55	3929.08	-111.85	40°08'33.692"N	104°37'58.235"W	2.26	
10840.00	90.090	1.030	6983.52	4015.51	4014.07	-111.18	40°08'34.532"N	104°37'58.227"W	1.48	
10925.00	89.540	0.320	6983.80	4100.46	4099.06	-110.18	40°08'35.372"N	104°37'58.214"W	1.06	
11010.00	90.610	0.440	6983.68	4185.43	4184.06	-109.62	40°08'36.212"N	104°37'58.206"W	1.27	
11096.00	90.610	1.100	6982.77	4271.38	4270.05	-108.46	40°08'37.062"N	104°37'58.192"W	0.77	
11181.00	90.860	1.520	6981.68	4356.29	4355.02	-106.52	40°08'37.902"N	104°37'58.167"W	0.57	
11266.00	90.610	1.930	6980.59	4441.17	4439.97	-103.96	40°08'38.741"N	104°37'58.134"W	0.56	
11351.00	88.750	359.940	6981.06	4526.10	4524.95	-102.57	40°08'39.581"N	104°37'58.116"W	3.20	
11437.00	89.530	359.680	6982.35	4612.08	4610.94	-102.86	40°08'40.431"N	104°37'58.119"W	0.96	
11522.00	89.320	0.410	6983.21	4697.06	4695.94	-102.79	40°08'41.271"N	104°37'58.119"W	0.89	
11607.00	89.840	359.650	6983.83	4782.03	4780.93	-102.75	40°08'42.111"N	104°37'58.118"W	1.08	
11692.00	89.660	359.280	6984.20	4867.03	4865.93	-103.54	40°08'42.951"N	104°37'58.128"W	0.48	
11764.00†	89.007	359.615	6985.04	4939.02	4937.92	-104.23	40°08'43.662"N	104°37'58.137"W	1.02	Last BHI MWD Survey
11778.00	88.880	359.680	6985.30	4953.01	4951.92	-104.32	40°08'43.800"N	104°37'58.138"W	1.02	
11877.00	88.330	359.630	6987.71	5051.97	5050.88	-104.92	40°08'44.778"N	104°37'58.146"W	0.56	
11941.00	88.330	359.630	6989.57	5115.94	5114.86	-105.33	40°08'45.410"N	104°37'58.151"W	0.00	Projection to Bit

## HOLE & CASING SECTIONS - Ref Wellbore: WEICHEL 14N-11HZ AWB Ref Wellpath: WEICHEL 14N-11HZ AWP

String/Diameter	Start MD [ft]	End MD [ft]	Interval [ft]	Start TVD [ft]	End TVD [ft]	Start N/S [ft]	Start E/W [ft]	End N/S [ft]	End E/W [ft]
13.5in Open Hole	16.00	877.00	861.00	16.00	876.98	0.00	0.00	3.27	1.75
9.625in Casing Surface	16.00	877.00	861.00	16.00	876.98	0.00	0.00	3.27	1.75
8.75in Open Hole	877.00	7299.00	6422.00	876.98	6923.63	3.27	1.75	474.55	-114.39
7in Casing Intermediate	16.00	7289.00	7273.00	16.00	6923.28	0.00	0.00	464.57	-113.92
6.125in Open Hole	7299.00	11941.00	4642.00	6923.63	6989.57	474.55	-114.39	5114.86	-105.33



# Actual Wellpath Report

WEICHEL 14N-11HZ AWP

Page 6 of 7



## REFERENCE WELLPATH IDENTIFICATION

Operator	KERR-MCGEE OIL & GAS ONSHORE LP	Slot	SLOT#35 WEICHEL 14N-11HZ (215'FSL & 2291'FWL, SEC.14)
Area	COLORADO	Well	WEICHEL 14N-11HZ
Field	WELD COUNTY (KERR MCGEE)	Wellbore	WEICHEL 14N-11HZ AWB
Facility	SEC.14-T2N-R65W		

## TARGETS

Name	MD [ft]	TVD [ft]	North [ft]	East [ft]	Grid East [US ft]	Grid North [US ft]	Latitude	Longitude	Shape
WEICHEL 3 PAD SECTION 11 LINES		6.00	289.41	2608.87	3245181.02	1292398.97	40°07'57.724"N	104°37'23.207"W	polygon
WEICHEL 3 PAD SECTION 14 LINES		6.00	289.41	2608.87	3245181.02	1292398.97	40°07'57.724"N	104°37'23.207"W	polygon
WEICHEL 14-11HZ HARDLINE WINDOW (865'FSL SEC 11, 460'FSL, 2201'FWL & 1798'FWL)		6951.00	0.00	0.00	3242575.22	1292084.07	40°07'54.865"N	104°37'56.795"W	polygon
WEICHEL 14-11HZ HORIZONTAL SPACING UNIT		6951.00	0.00	0.00	3242575.22	1292084.07	40°07'54.865"N	104°37'56.795"W	polygon
WEICHEL 14N-11HZ BHL 3 (50'FSL & 2150'FWL SEC. 11)		6951.00	5139.34	-110.66	3242414.29	1297221.86	40°08'45.652"N	104°37'58.220"W	point
WEICHEL 14N-11HZ BHL ON PLAT (460'FSL & 1850'FWL, SEC.11) REV-1		6951.00	5549.34	-410.66	3242110.31	1297628.89	40°08'49.704"N	104°38'02.083"W	point
WEICHEL 14N-11HZ BHL REV-2 (460'FSL & 2150'FWL SEC.11)		6951.00	5549.34	-110.66	3242410.28	1297631.82	40°08'49.704"N	104°37'58.220"W	point
WEICHEL 13-14HZ PAD SEC. 11 HARDLINES (460' SETBACKS)		7495.00	180.10	-1974.36	3240599.27	1292244.84	40°07'56.644"N	104°38'22.214"W	polygon
WEICHEL 13-14HZ PAD SEC. 14 HARDLINES (460' SETBACKS)		7496.00	202.67	-1994.24	3240579.17	1292267.21	40°07'56.867"N	104°38'22.470"W	polygon

## WELLPATH COMPOSITION - Ref Wellbore: WEICHEL 14N-11HZ AWB Ref Wellpath: WEICHEL 14N-11HZ AWP

Start MD [ft]	End MD [ft]	Positional Uncertainty Model	Log Name/Comment	Wellbore
16.00	877.00	Generic gyro - continuous (Standard)	GYRODATA SURVEYS <116-877>	WEICHEL 14N-11HZ AWB
877.00	7241.00	NaviTrak (Standard)	BHI MWD SURVEYS 8 3/4" HOLE <974-7241>	WEICHEL 14N-11HZ AWB
7241.00	11877.00	OnTrak (Standard)	BHI MWD SURVEYS 6 1/8" HOLE <7326-11877>	WEICHEL 14N-11HZ AWB
11877.00	11941.00	Blind Drilling (std)	Projection to bit	WEICHEL 14N-11HZ AWB





# Actual Wellpath Report

WEICHEL 14N-11HZ AWP

Page 7 of 7



## REFERENCE WELLPATH IDENTIFICATION

Operator	KERR-MCGEE OIL & GAS ONSHORE LP	Slot	SLOT#35 WEICHEL 14N-11HZ (215'FSL & 2291'FWL, SEC.14)
Area	COLORADO	Well	WEICHEL 14N-11HZ
Field	WELD COUNTY (KERR MCGEE)	Wellbore	WEICHEL 14N-11HZ AWB
Facility	SEC.14-T2N-R65W		

## WELLPATH COMMENTS

MD [ft]	Inclination [°]	Azimuth [°]	TVD [ft]	Comment
16.00	0.000	112.410	16.00	Tie-On
116.00	0.510	112.410	116.00	Begin GYRO Surveys
877.00	0.590	357.130	876.98	Tie-Into GYRO Surveys
973.00	0.669	23.447	972.98	Begin BHI MWD Surveys
7289.00	87.663	357.301	6923.28	7" Casing Point
11764.00	89.007	359.615	6985.04	Last BHI MWD Survey
11941.00	88.330	359.630	6989.57	Projection to Bit