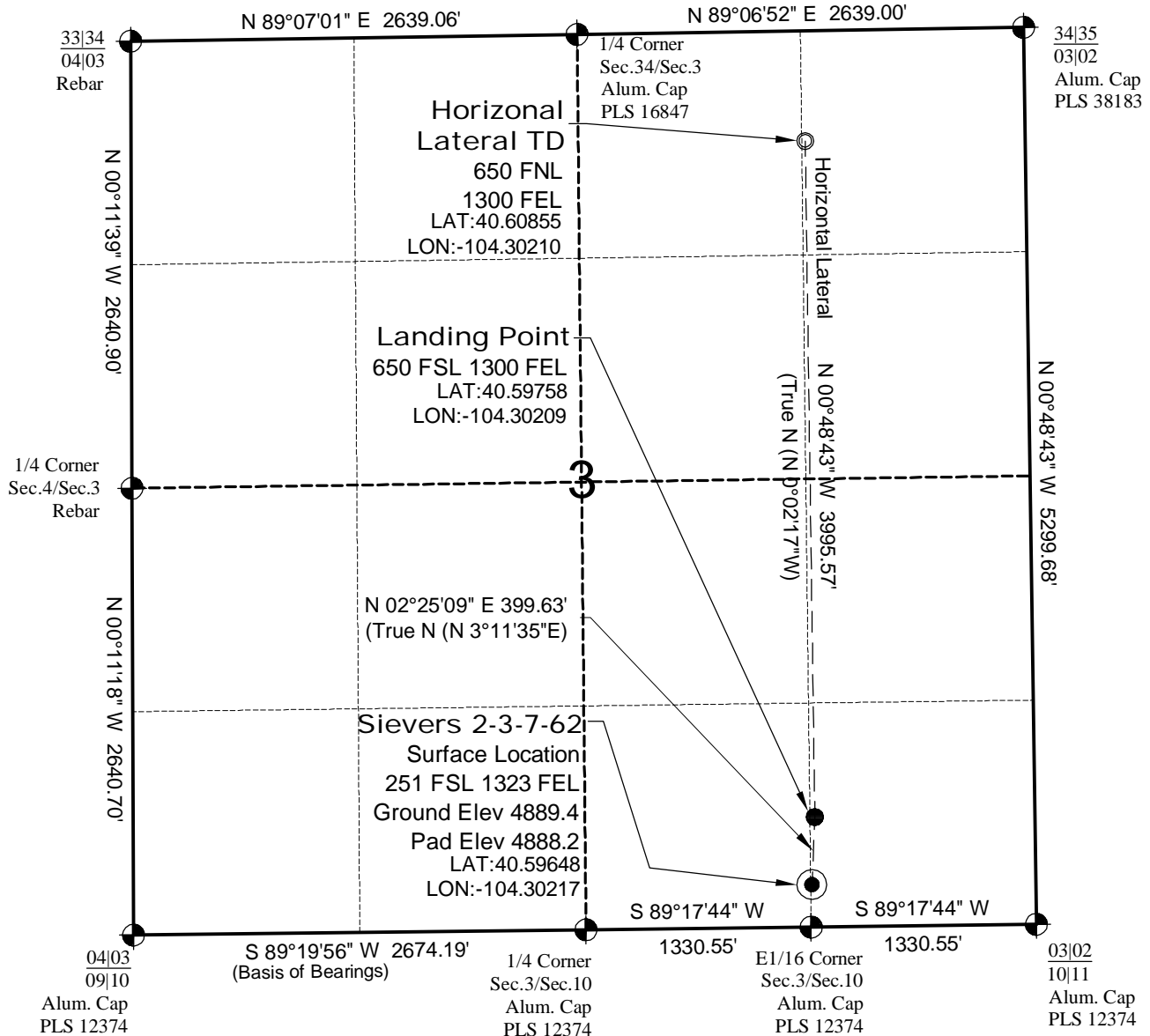


WELL LOCATION MAP

**SIEVERS
1-3-7-62 PAD**



SURVEYOR'S STATEMENT

The undersigned hereby states that the well location shown hereon was staked on the ground based on existing monumentation and/or physical evidence found in the field and is correct to the best of my knowledge, information and belief.



NOTES

- 1.) Horizontal (NAD 83) and vertical (NAVD 88) datum is based on the Leica Geosystems SmartNet of Colorado.
- 2.) All directions, distances, and dimensions shown hereon are based on coordinates from the "Colorado coordinate system of 1983 north zone" (article 52 of title 38, C.R.S.).
- 3.) All section line dimensions shown hereon are based on field measurements of existing monuments and/or physical evidence found in the field unless otherwise indicated. Refer to land survey plats deposited in Weld County.
- 4.) Physical features shown hereon are for graphical representation only.
- 5.) See Form 2A for visible improvements within 400' of wellhead.
- 6.) Distances to nearest section lines are measured perpendicularly.
- 7.) This is not a land survey nor land survey plat.
- 8.) Date of Survey 9/20/12; Date of Drawing 11/29/12. REV 3
PDOP Reading: 1.7 Instrument Operator: Marc Woodard



**CARRIZO NIOBRARA LLC
SIEVERS 2-3-7-62 PAD**

**SL SE1/4 SE1/4 SEC.3 T7N R62W
HL TD NE1/4 NE1/4 SEC.3 T7N R62W
6th PM WELD COUNTY COLORADO**