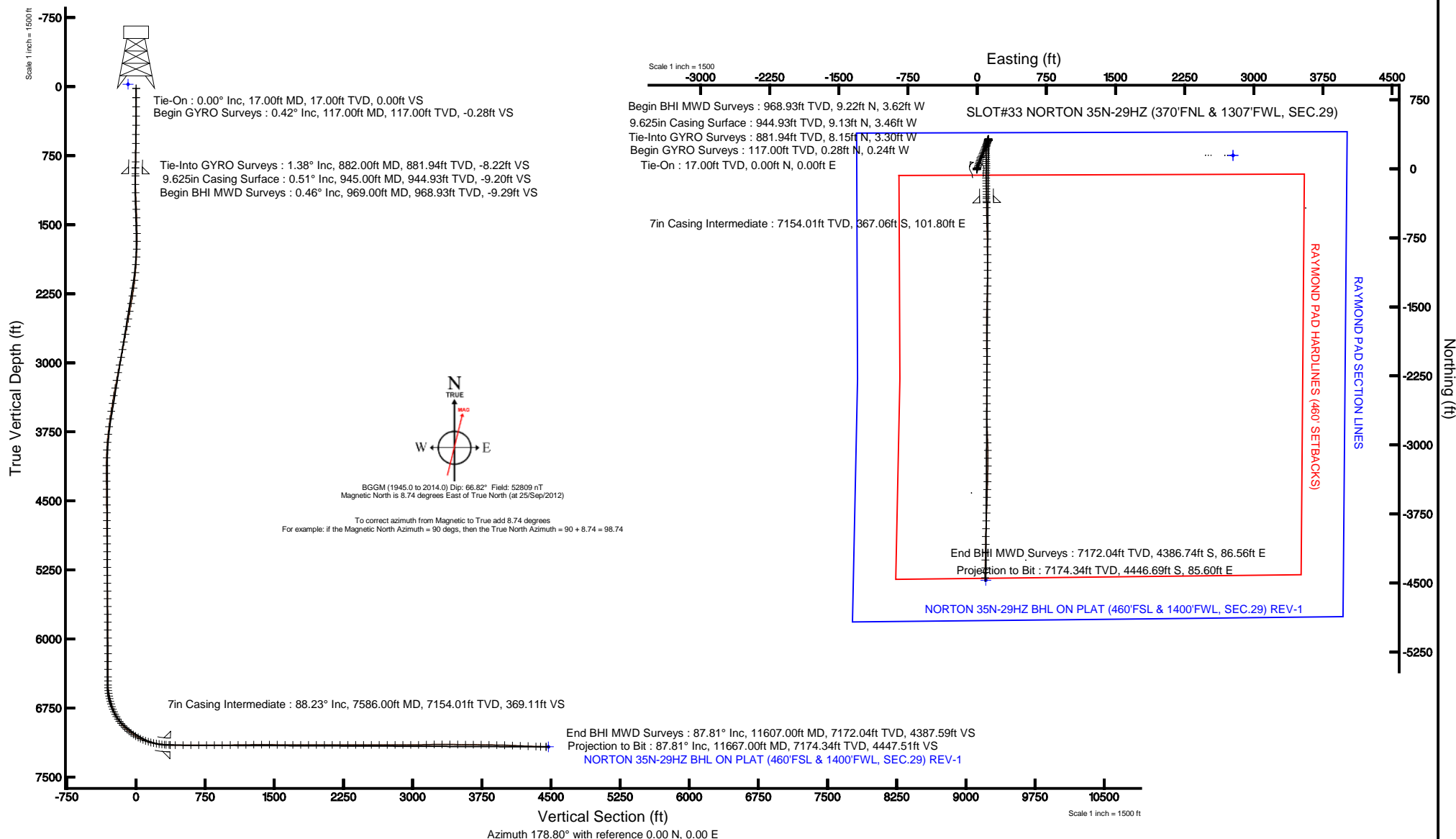


# KERR-MCGEE OIL & GAS ONSHORE LP

Location: COLORADO Slot: SLOT#33 NORTON 35N-29HZ (370'FNL & 1307'FWL, SEC.29)  
 Field: WELD COUNTY (KERR MCGEE) Well: NORTON 35N-29HZ  
 Facility: SEC.29-T3N-R66W Wellbore: NORTON 35N-29HZ PWB

Plot reference wellpath is NORTON 35N-29HZ (REV-D.0) PWP

True vertical depths are referenced to XTREME 6 (RKB)	Grid System: NAD83 / Lambert Colorado SP, Northern Zone (501), US feet
Measured depths are referenced to XTREME 6 (RKB)	North Reference: True north
XTREME 6 (RKB) to Mean Sea Level: 4914 feet	Scale: True distance
Mean Sea Level to Mud line (At Slot: SLOT#33 NORTON 35N-29HZ (370'FNL & 1307'FWL, SEC.29)): 0 feet	Depths are in feet
Coordinates are in feet referenced to Slot	Created by: augunora on 07/Nov/2012





# Actual Wellpath Report

NORTON 35N-29HZ AWP

Page 1 of 7



## REFERENCE WELLPATH IDENTIFICATION

Operator	KERR-MCGEE OIL & GAS ONSHORE LP	Slot	SLOT#33 NORTON 35N-29HZ (370'FNL & 1307'FWL, SEC.29)
Area	COLORADO	Well	NORTON 35N-29HZ
Field	WELD COUNTY (KERR MCGEE)	Wellbore	NORTON 35N-29HZ AWB
Facility	SEC.29-T3N-R66W		

## REPORT SETUP INFORMATION

Projection System	NAD83 / Lambert Colorado SP, Northern Zone (501), US feet	Software System	WellArchitect® 3.0.0
North Reference	True	User	Augunora
Scale	0.999957	Report Generated	07/Nov/2012 at 13:21
Convergence at slot	0.45° East	Database/Source file	WA_ANADARKO/NORTON_35N-29HZ_AWB.xml

## WELLPATH LOCATION

	Local coordinates		Grid coordinates		Geographic coordinates	
	North[ft]	East[ft]	Easting[US ft]	Northing[US ft]	Latitude	Longitude
Slot Location	763.92	266.77	3193861.27	1317192.22	40°12'07.225"N	104°48'21.438"W
Facility Reference Pt			3193600.49	1316426.28	40°11'59.676"N	104°48'24.876"W
Field Reference Pt			3197771.84	1268891.29	40°04'09.600"N	104°47'36.000"W

## WELLPATH DATUM

Calculation method	Minimum curvature	XTREME 6 (RKB) to Facility Vertical Datum
Horizontal Reference Pt	Slot	XTREME 6 (RKB) to Mean Sea Level
Vertical Reference Pt	XTREME 6 (RKB)	XTREME 6 (RKB) to Mud Line at Slot (SLOT#33 NORTON 35N-29HZ (370'FNL & 1307'FWL))
MD Reference Pt	XTREME 6 (RKB)	Section Origin
Field Vertical Reference	Mean Sea Level	Section Azimuth



# Actual Wellpath Report

NORTON 35N-29HZ AWP

Page 2 of 7



## REFERENCE WELLPATH IDENTIFICATION

Operator	KERR-MCGEE OIL & GAS ONSHORE LP	Slot	SLOT#33 NORTON 35N-29HZ (370'FNL & 1307'FWL, SEC.29)
Area	COLORADO	Well	NORTON 35N-29HZ
Field	WELD COUNTY (KERR MCGEE)	Wellbore	NORTON 35N-29HZ AWB
Facility	SEC.29-T3N-R66W		

## WELLPATH DATA (163 stations) † = interpolated/extrapolated station

MD [ft]	Inclination [°]	Azimuth [°]	TVD [ft]	Vert Sect [ft]	North [ft]	East [ft]	Latitude	Longitude	DLS [°/100ft]	Comments
0.00†	0.000	319.700	0.00	0.00	0.00	0.00	40°12'07.225"N	104°48'21.438"W	0.00	
17.00	0.000	319.700	17.00	0.00	0.00	0.00	40°12'07.225"N	104°48'21.438"W	0.00	Tie-On
117.00	0.420	319.700	117.00	-0.28	0.28	-0.24	40°12'07.228"N	104°48'21.441"W	0.42	Begin GYRO Surveys
217.00	0.300	315.330	217.00	-0.76	0.75	-0.66	40°12'07.232"N	104°48'21.446"W	0.12	
317.00	0.360	315.930	317.00	-1.18	1.16	-1.06	40°12'07.236"N	104°48'21.452"W	0.06	
417.00	0.570	327.550	416.99	-1.83	1.80	-1.55	40°12'07.243"N	104°48'21.458"W	0.23	
517.00	0.670	334.050	516.99	-2.79	2.75	-2.07	40°12'07.252"N	104°48'21.465"W	0.12	
617.00	0.700	344.160	616.98	-3.91	3.86	-2.49	40°12'07.263"N	104°48'21.470"W	0.12	
717.00	0.840	341.890	716.97	-5.20	5.15	-2.89	40°12'07.276"N	104°48'21.475"W	0.14	
817.00	1.070	352.040	816.96	-6.83	6.77	-3.24	40°12'07.292"N	104°48'21.480"W	0.28	
882.00	1.380	1.790	881.94	-8.21	8.15	-3.30	40°12'07.306"N	104°48'21.481"W	0.57	Tie-Into GYRO Surveys
969.00	0.460	273.270	968.93	-9.29	9.22	-3.62	40°12'07.316"N	104°48'21.485"W	1.66	Begin BHI MWD Surveys
1061.00	1.280	149.680	1060.92	-8.42	8.35	-3.47	40°12'07.308"N	104°48'21.483"W	1.72	
1152.00	2.130	162.460	1151.88	-5.91	5.86	-2.45	40°12'07.283"N	104°48'21.470"W	1.02	
1243.00	2.310	179.270	1242.82	-2.45	2.42	-1.91	40°12'07.249"N	104°48'21.463"W	0.74	
1333.00	2.480	190.680	1332.74	1.27	-1.31	-2.25	40°12'07.212"N	104°48'21.467"W	0.56	
1424.00	1.650	227.970	1423.68	4.05	-4.12	-3.59	40°12'07.184"N	104°48'21.484"W	1.69	
1509.00	2.020	202.460	1508.64	6.23	-6.33	-5.07	40°12'07.162"N	104°48'21.503"W	1.04	
1594.00	0.940	195.280	1593.61	8.27	-8.38	-5.83	40°12'07.142"N	104°48'21.513"W	1.29	
1679.00	0.520	19.570	1678.61	8.58	-8.69	-5.88	40°12'07.139"N	104°48'21.514"W	1.72	
1764.00	2.480	20.080	1763.57	6.50	-6.60	-5.12	40°12'07.160"N	104°48'21.504"W	2.31	
1849.00	3.630	21.910	1848.45	2.31	-2.38	-3.48	40°12'07.201"N	104°48'21.483"W	1.36	
1934.00	4.260	21.220	1933.25	-3.09	3.06	-1.34	40°12'07.255"N	104°48'21.455"W	0.74	
2020.00	5.670	22.920	2018.93	-9.92	9.95	1.47	40°12'07.323"N	104°48'21.419"W	1.65	
2105.00	7.020	23.100	2103.40	-18.49	18.60	5.15	40°12'07.409"N	104°48'21.372"W	1.59	
2190.00	8.390	17.770	2187.63	-29.10	29.28	9.08	40°12'07.514"N	104°48'21.321"W	1.82	
2275.00	9.540	11.570	2271.60	-41.84	42.09	12.38	40°12'07.641"N	104°48'21.278"W	1.77	
2360.00	10.500	14.050	2355.30	-56.19	56.50	15.68	40°12'07.783"N	104°48'21.236"W	1.24	
2446.00	10.710	19.320	2439.83	-71.24	71.64	20.22	40°12'07.933"N	104°48'21.177"W	1.15	
2531.00	11.490	20.990	2523.24	-86.49	87.00	25.87	40°12'08.085"N	104°48'21.105"W	0.99	
2616.00	11.130	20.320	2606.59	-101.97	102.60	31.75	40°12'08.239"N	104°48'21.029"W	0.45	
2701.00	11.400	19.610	2689.95	-117.46	118.21	37.42	40°12'08.393"N	104°48'20.956"W	0.36	
2786.00	11.140	23.410	2773.32	-132.79	133.66	43.50	40°12'08.546"N	104°48'20.877"W	0.93	
2871.00	11.720	23.970	2856.63	-148.08	149.08	50.27	40°12'08.698"N	104°48'20.790"W	0.69	
2957.00	12.060	23.290	2940.78	-164.18	165.31	57.37	40°12'08.859"N	104°48'20.699"W	0.43	
3042.00	11.670	20.300	3023.97	-180.27	181.53	63.86	40°12'09.019"N	104°48'20.615"W	0.86	
3127.00	11.800	19.420	3107.19	-196.41	197.79	69.74	40°12'09.180"N	104°48'20.539"W	0.26	
3212.00	11.430	22.800	3190.45	-212.25	213.75	75.89	40°12'09.337"N	104°48'20.460"W	0.91	
3297.00	11.440	21.730	3273.77	-227.72	229.35	82.27	40°12'09.491"N	104°48'20.378"W	0.25	
3382.00	10.740	21.970	3357.18	-242.78	244.52	88.36	40°12'09.641"N	104°48'20.299"W	0.83	
3467.00	10.050	22.930	3440.78	-256.84	258.70	94.21	40°12'09.781"N	104°48'20.224"W	0.84	
3553.00	9.420	21.620	3525.54	-270.18	272.15	99.73	40°12'09.914"N	104°48'20.153"W	0.78	
3638.00	9.120	19.820	3609.43	-282.89	284.96	104.57	40°12'10.041"N	104°48'20.090"W	0.49	
3723.00	7.720	18.170	3693.52	-294.57	296.72	108.64	40°12'10.157"N	104°48'20.038"W	1.67	
3808.00	6.560	22.710	3777.86	-304.40	306.62	112.29	40°12'10.255"N	104°48'19.991"W	1.52	



# Actual Wellpath Report

NORTON 35N-29HZ AWP

Page 3 of 7



## REFERENCE WELLPATH IDENTIFICATION

Operator	KERR-MCGEE OIL & GAS ONSHORE LP	Slot	SLOT#33 NORTON 35N-29HZ (370'FNL & 1307'FWL, SEC.29)
Area	COLORADO	Well	NORTON 35N-29HZ
Field	WELD COUNTY (KERR MCGEE)	Wellbore	NORTON 35N-29HZ AWB
Facility	SEC.29-T3N-R66W		

## WELLPATH DATA (163 stations)

MD [ft]	Inclination [°]	Azimuth [°]	TVD [ft]	Vert Sect [ft]	North [ft]	East [ft]	Latitude	Longitude	DLS [°/100ft]	Comments
3894.00	5.100	23.550	3863.41	-312.37	314.66	115.72	40°12'10.334"N	104°48'19.947"W	1.70	
3979.00	3.590	28.840	3948.16	-318.11	320.45	118.51	40°12'10.392"N	104°48'19.911"W	1.84	
4064.00	2.160	35.770	4033.05	-321.70	324.08	120.73	40°12'10.428"N	104°48'19.882"W	1.73	
4149.00	0.730	52.810	4118.02	-323.30	325.71	122.10	40°12'10.444"N	104°48'19.864"W	1.74	
4234.00	0.580	195.470	4203.02	-323.21	325.62	122.42	40°12'10.443"N	104°48'19.860"W	1.46	
4319.00	0.720	219.850	4288.02	-322.39	324.80	121.96	40°12'10.435"N	104°48'19.866"W	0.36	
4405.00	0.800	216.600	4374.01	-321.51	323.90	121.25	40°12'10.426"N	104°48'19.875"W	0.11	
4490.00	0.770	235.720	4459.00	-320.73	323.10	120.43	40°12'10.418"N	104°48'19.886"W	0.31	
4576.00	0.790	229.120	4544.99	-320.03	322.39	119.50	40°12'10.411"N	104°48'19.898"W	0.11	
4661.00	0.870	232.980	4629.98	-319.28	321.62	118.54	40°12'10.403"N	104°48'19.910"W	0.11	
4746.00	0.710	247.140	4714.98	-318.70	321.03	117.54	40°12'10.397"N	104°48'19.923"W	0.30	
4831.00	1.240	247.180	4799.96	-318.17	320.46	116.21	40°12'10.392"N	104°48'19.940"W	0.62	
4915.00	0.720	204.430	4883.95	-317.36	319.63	115.15	40°12'10.384"N	104°48'19.954"W	1.03	
5000.00	1.030	112.850	4968.95	-316.56	318.85	115.64	40°12'10.376"N	104°48'19.948"W	1.50	
5085.00	1.060	107.790	5053.93	-316.00	318.31	117.09	40°12'10.371"N	104°48'19.929"W	0.11	
5170.00	1.140	109.710	5138.92	-315.44	317.79	118.64	40°12'10.365"N	104°48'19.909"W	0.10	
5255.00	0.970	114.040	5223.90	-314.84	317.21	120.09	40°12'10.360"N	104°48'19.890"W	0.22	
5341.00	0.960	118.520	5309.89	-314.17	316.57	121.39	40°12'10.353"N	104°48'19.874"W	0.09	
5426.00	0.960	135.680	5394.88	-313.30	315.72	122.51	40°12'10.345"N	104°48'19.859"W	0.34	
5511.00	0.870	142.330	5479.87	-312.26	314.70	123.40	40°12'10.335"N	104°48'19.848"W	0.16	
5595.00	0.980	147.750	5563.86	-311.14	313.59	124.17	40°12'10.324"N	104°48'19.838"W	0.17	
5681.00	0.720	156.780	5649.85	-310.01	312.47	124.78	40°12'10.313"N	104°48'19.830"W	0.34	
5766.00	0.500	171.860	5734.84	-309.14	311.61	125.04	40°12'10.304"N	104°48'19.826"W	0.32	
5851.00	0.460	166.760	5819.84	-308.44	310.91	125.17	40°12'10.297"N	104°48'19.825"W	0.07	
5936.00	0.330	218.390	5904.84	-307.92	310.39	125.10	40°12'10.292"N	104°48'19.826"W	0.43	
6022.00	0.540	226.930	5990.83	-307.46	309.91	124.65	40°12'10.288"N	104°48'19.832"W	0.25	
6107.00	0.420	245.940	6075.83	-307.07	309.51	124.07	40°12'10.284"N	104°48'19.839"W	0.23	
6192.00	0.450	242.500	6160.83	-306.80	309.23	123.49	40°12'10.281"N	104°48'19.846"W	0.05	
6277.00	0.590	271.780	6245.83	-306.67	309.09	122.76	40°12'10.279"N	104°48'19.856"W	0.35	
6362.00	0.790	271.280	6330.82	-306.72	309.12	121.74	40°12'10.280"N	104°48'19.869"W	0.24	
6447.00	0.980	257.380	6415.81	-306.60	308.97	120.44	40°12'10.278"N	104°48'19.886"W	0.34	
6488.00	1.150	258.270	6456.80	-306.45	308.81	119.70	40°12'10.277"N	104°48'19.895"W	0.42	
6534.00	0.930	243.480	6502.79	-306.21	308.55	118.91	40°12'10.274"N	104°48'19.906"W	0.75	
6564.00	2.570	193.490	6532.78	-305.45	307.79	118.53	40°12'10.267"N	104°48'19.910"W	6.99	
6594.00	5.890	196.340	6562.69	-303.33	305.66	117.94	40°12'10.246"N	104°48'19.918"W	11.09	
6624.00	8.780	186.720	6592.45	-299.59	301.91	117.24	40°12'10.208"N	104°48'19.927"W	10.43	
6654.00	12.270	202.000	6621.94	-294.39	296.67	115.78	40°12'10.157"N	104°48'19.946"W	14.80	
6684.00	15.090	203.070	6651.09	-287.89	290.12	113.06	40°12'10.092"N	104°48'19.981"W	9.44	
6714.00	16.480	200.660	6679.96	-280.38	282.55	110.02	40°12'10.017"N	104°48'20.020"W	5.12	
6744.00	17.310	198.790	6708.66	-272.23	274.34	107.08	40°12'09.936"N	104°48'20.058"W	3.31	
6774.00	19.460	198.040	6737.13	-263.31	265.36	104.10	40°12'09.847"N	104°48'20.096"W	7.21	
6804.00	21.840	194.540	6765.20	-253.22	255.21	101.15	40°12'09.747"N	104°48'20.134"W	8.93	
6834.00	24.570	188.850	6792.78	-241.70	243.64	98.79	40°12'09.633"N	104°48'20.165"W	11.77	
6864.00	26.850	184.690	6819.81	-228.81	230.72	97.27	40°12'09.505"N	104°48'20.184"W	9.69	
6894.00	29.930	183.940	6846.19	-214.61	216.50	96.21	40°12'09.364"N	104°48'20.198"W	10.34	



# Actual Wellpath Report

NORTON 35N-29HZ AWP

Page 4 of 7



## REFERENCE WELLPATH IDENTIFICATION

Operator	KERR-MCGEE OIL & GAS ONSHORE LP	Slot	SLOT#33 NORTON 35N-29HZ (370'FNL & 1307'FWL, SEC.29)
Area	COLORADO	Well	NORTON 35N-29HZ
Field	WELD COUNTY (KERR MCGEE)	Wellbore	NORTON 35N-29HZ AWB
Facility	SEC.29-T3N-R66W		

## WELLPATH DATA (163 stations) † = interpolated/extrapolated station

MD [ft]	Inclination [°]	Azimuth [°]	TVD [ft]	Vert Sect [ft]	North [ft]	East [ft]	Latitude	Longitude	DLS [°/100ft]	Comments
6924.00	33.060	182.440	6871.77	-198.98	200.86	95.34	40°12'09.210"N	104°48'20.209"W	10.75	
6954.00	35.500	180.530	6896.56	-182.11	183.97	94.91	40°12'09.043"N	104°48'20.215"W	8.89	
6984.00	38.760	177.690	6920.48	-164.00	165.87	95.21	40°12'08.864"N	104°48'20.211"W	12.28	
7014.00	41.800	177.490	6943.36	-144.62	146.49	96.03	40°12'08.673"N	104°48'20.200"W	10.14	
7044.00	44.670	177.770	6965.22	-124.07	125.96	96.88	40°12'08.470"N	104°48'20.189"W	9.59	
7074.00	47.740	178.210	6985.98	-102.42	104.32	97.63	40°12'08.256"N	104°48'20.180"W	10.29	
7104.00	50.740	178.890	7005.56	-79.70	81.61	98.21	40°12'08.031"N	104°48'20.172"W	10.15	
7134.00	53.600	179.090	7023.96	-56.01	57.92	98.62	40°12'07.797"N	104°48'20.167"W	9.55	
7164.00	57.040	180.180	7041.03	-31.35	33.26	98.78	40°12'07.554"N	104°48'20.165"W	11.85	
7194.00	59.300	180.860	7056.85	-5.87	7.77	98.54	40°12'07.302"N	104°48'20.168"W	7.78	
7224.00	60.920	182.100	7071.80	20.11	-18.23	97.87	40°12'07.045"N	104°48'20.177"W	6.48	
7254.00	64.010	182.180	7085.66	46.67	-44.81	96.88	40°12'06.782"N	104°48'20.190"W	10.30	
7284.00	66.980	180.650	7098.11	73.93	-72.10	96.21	40°12'06.513"N	104°48'20.198"W	10.93	
7314.00	70.150	178.940	7109.07	101.85	-100.02	96.31	40°12'06.237"N	104°48'20.197"W	11.82	
7344.00	72.930	178.100	7118.57	130.30	-128.46	97.05	40°12'05.956"N	104°48'20.187"W	9.64	
7374.00	75.270	178.210	7126.79	159.15	-157.29	97.98	40°12'05.671"N	104°48'20.175"W	7.81	
7404.00	78.100	178.730	7133.69	188.34	-186.47	98.75	40°12'05.382"N	104°48'20.165"W	9.58	
7434.00	79.940	179.050	7139.41	217.79	-215.92	99.32	40°12'05.091"N	104°48'20.158"W	6.22	
7464.00	82.370	179.110	7144.02	247.43	-245.56	99.80	40°12'04.798"N	104°48'20.152"W	8.10	
7494.00	83.550	179.230	7147.70	277.20	-275.33	100.23	40°12'04.504"N	104°48'20.146"W	3.95	
7524.00	85.020	179.170	7150.68	307.05	-305.17	100.65	40°12'04.209"N	104°48'20.141"W	4.90	
7540.00	86.240	178.880	7151.90	323.01	-321.12	100.92	40°12'04.052"N	104°48'20.137"W	7.84	
7574.00	87.990	178.880	7153.61	356.96	-355.07	101.58	40°12'03.716"N	104°48'20.129"W	5.15	
7586.00†	88.226	179.002	7154.01	368.96	-367.06	101.80	40°12'03.598"N	104°48'20.126"W	2.22	7" Casing Point
7640.00	89.290	179.550	7155.18	422.94	-421.05	102.49	40°12'03.064"N	104°48'20.117"W	2.22	
7725.00	89.660	179.170	7155.96	507.93	-506.04	103.44	40°12'02.224"N	104°48'20.105"W	0.62	
7811.00	90.150	178.880	7156.10	593.93	-592.02	104.90	40°12'01.375"N	104°48'20.086"W	0.66	
7896.00	90.640	178.450	7155.52	678.93	-677.00	106.88	40°12'00.535"N	104°48'20.061"W	0.77	
7981.00	89.810	178.720	7155.18	763.93	-761.97	108.98	40°11'59.695"N	104°48'20.034"W	1.03	
8066.00	89.960	179.360	7155.35	848.93	-846.96	110.40	40°11'58.855"N	104°48'20.015"W	0.77	
8151.00	90.640	179.180	7154.91	933.92	-931.95	111.49	40°11'58.015"N	104°48'20.001"W	0.83	
8237.00	90.180	179.900	7154.29	1019.91	-1017.94	112.18	40°11'57.166"N	104°48'19.992"W	0.99	
8322.00	90.520	179.630	7153.77	1104.90	-1102.94	112.53	40°11'56.326"N	104°48'19.988"W	0.51	
8407.00	90.900	180.240	7152.72	1189.88	-1187.93	112.62	40°11'55.486"N	104°48'19.987"W	0.85	
8492.00	91.410	180.850	7151.01	1274.83	-1272.91	111.81	40°11'54.646"N	104°48'19.997"W	0.94	
8577.00	90.030	182.130	7149.94	1359.73	-1357.87	109.60	40°11'53.807"N	104°48'20.026"W	2.21	
8662.00	89.050	181.830	7150.62	1444.60	-1442.82	106.67	40°11'52.967"N	104°48'20.063"W	1.21	
8748.00	89.320	181.510	7151.84	1530.49	-1528.77	104.16	40°11'52.118"N	104°48'20.096"W	0.49	
8833.00	89.540	180.740	7152.69	1615.43	-1613.75	102.49	40°11'51.278"N	104°48'20.117"W	0.94	
8918.00	90.090	179.950	7152.96	1700.40	-1698.75	101.98	40°11'50.438"N	104°48'20.124"W	1.13	
9003.00	90.310	179.870	7152.67	1785.38	-1783.75	102.11	40°11'49.598"N	104°48'20.122"W	0.28	
9088.00	90.490	179.660	7152.07	1870.37	-1868.75	102.46	40°11'48.758"N	104°48'20.118"W	0.33	
9173.00	89.420	179.170	7152.14	1955.37	-1953.74	103.33	40°11'47.918"N	104°48'20.106"W	1.38	
9259.00	89.420	179.550	7153.01	2041.36	-2039.73	104.29	40°11'47.068"N	104°48'20.094"W	0.44	
9344.00	89.870	179.860	7153.54	2126.35	-2124.73	104.73	40°11'46.228"N	104°48'20.088"W	0.64	





# Actual Wellpath Report

NORTON 35N-29HZ AWP

Page 5 of 7



## REFERENCE WELLPATH IDENTIFICATION

Operator	KERR-MCGEE OIL & GAS ONSHORE LP	Slot	SLOT#33 NORTON 35N-29HZ (370'FNL & 1307'FWL, SEC.29)
Area	COLORADO	Well	NORTON 35N-29HZ
Field	WELD COUNTY (KERR MCGEE)	Wellbore	NORTON 35N-29HZ AWB
Facility	SEC.29-T3N-R66W		

## WELLPATH DATA (163 stations)

MD [ft]	Inclination [°]	Azimuth [°]	TVD [ft]	Vert Sect [ft]	North [ft]	East [ft]	Latitude	Longitude	DLS [°/100ft]	Comments
9429.00	90.270	179.900	7153.43	2211.34	-2209.73	104.91	40°11'45.389"N	104°48'20.086"W	0.47	
9514.00	90.760	180.330	7152.67	2296.31	-2294.72	104.74	40°11'44.549"N	104°48'20.088"W	0.77	
9599.00	89.530	180.350	7152.46	2381.28	-2379.72	104.23	40°11'43.709"N	104°48'20.095"W	1.45	
9685.00	90.120	180.410	7152.72	2467.25	-2465.72	103.66	40°11'42.859"N	104°48'20.102"W	0.69	
9770.00	89.530	179.520	7152.98	2552.24	-2550.71	103.71	40°11'42.019"N	104°48'20.102"W	1.26	
9855.00	89.780	179.590	7153.49	2637.23	-2635.71	104.37	40°11'41.179"N	104°48'20.093"W	0.31	
9941.00	90.060	179.190	7153.61	2723.23	-2721.70	105.29	40°11'40.329"N	104°48'20.081"W	0.57	
10026.00	90.240	178.230	7153.39	2808.23	-2806.68	107.20	40°11'39.489"N	104°48'20.057"W	1.15	
10111.00	90.090	177.800	7153.14	2893.21	-2891.63	110.15	40°11'38.650"N	104°48'20.019"W	0.54	
10196.00	89.810	178.440	7153.22	2978.21	-2976.58	112.93	40°11'37.810"N	104°48'19.983"W	0.82	
10280.00	90.950	178.810	7152.66	3062.20	-3060.56	114.95	40°11'36.981"N	104°48'19.957"W	1.43	
10365.00	91.570	180.580	7150.79	3147.17	-3145.53	115.40	40°11'36.141"N	104°48'19.951"W	2.21	
10450.00	91.070	180.610	7148.83	3232.11	-3230.50	114.52	40°11'35.301"N	104°48'19.962"W	0.59	
10535.00	90.360	180.950	7147.77	3317.06	-3315.49	113.36	40°11'34.461"N	104°48'19.977"W	0.93	
10620.00	88.980	181.790	7148.26	3401.97	-3400.46	111.33	40°11'33.622"N	104°48'20.003"W	1.90	
10706.00	89.510	181.770	7149.39	3487.86	-3486.41	108.66	40°11'32.772"N	104°48'20.038"W	0.62	
10791.00	89.910	181.280	7149.82	3572.77	-3571.38	106.40	40°11'31.933"N	104°48'20.067"W	0.74	
10876.00	89.080	182.090	7150.57	3657.66	-3656.34	103.90	40°11'31.093"N	104°48'20.099"W	1.36	
10961.00	89.350	181.720	7151.74	3742.53	-3741.28	101.07	40°11'30.254"N	104°48'20.136"W	0.54	
11046.00	88.740	181.840	7153.15	3827.41	-3826.23	98.43	40°11'29.414"N	104°48'20.170"W	0.73	
11131.00	89.110	182.090	7154.75	3912.28	-3911.16	95.52	40°11'28.575"N	104°48'20.207"W	0.53	
11216.00	88.460	181.270	7156.55	3997.16	-3996.11	93.03	40°11'27.736"N	104°48'20.239"W	1.23	
11301.00	87.470	180.730	7159.57	4082.05	-4081.04	91.55	40°11'26.896"N	104°48'20.258"W	1.33	
11387.00	87.600	180.820	7163.27	4167.92	-4166.95	90.38	40°11'26.047"N	104°48'20.273"W	0.18	
11472.00	87.690	181.240	7166.76	4252.79	-4251.87	88.86	40°11'25.208"N	104°48'20.293"W	0.50	
11557.00	87.780	180.830	7170.12	4337.66	-4336.79	87.32	40°11'24.369"N	104°48'20.313"W	0.49	
11607.00	87.810	180.920	7172.04	4387.60	-4386.74	86.56	40°11'23.875"N	104°48'20.323"W	0.19	End BHI MWD Surveys
11667.00	87.810	180.920	7174.34	4447.51	-4446.69	85.60	40°11'23.283"N	104°48'20.335"W	0.00	Projection to Bit

## HOLE & CASING SECTIONS - Ref Wellbore: NORTON 35N-29HZ AWB Ref Wellpath: NORTON 35N-29HZ AWP

String/Diameter	Start MD [ft]	End MD [ft]	Interval [ft]	Start TVD [ft]	End TVD [ft]	Start N/S [ft]	Start E/W [ft]	End N/S [ft]	End E/W [ft]
12.25in Open Hole	17.00	945.00	928.00	17.00	944.93	0.00	0.00	9.13	-3.46
9.625in Casing Surface	17.00	945.00	928.00	17.00	944.93	0.00	0.00	9.13	-3.46
8.75in Open Hole	945.00	7586.00	6641.00	944.93	7154.01	9.13	-3.46	-367.06	101.80
7in Casing Intermediate	17.00	7586.00	7569.00	17.00	7154.01	0.00	0.00	-367.06	101.80
6.125in Open Hole	7586.00	11667.00	4081.00	7154.01	7174.34	-367.06	101.80	-4446.69	85.60



# Actual Wellpath Report

NORTON 35N-29HZ AWP

Page 6 of 7



## REFERENCE WELLPATH IDENTIFICATION

Operator	KERR-MCGEE OIL & GAS ONSHORE LP	Slot	SLOT#33 NORTON 35N-29HZ (370'FNL & 1307'FWL, SEC.29)
Area	COLORADO	Well	NORTON 35N-29HZ
Field	WELD COUNTY (KERR MCGEE)	Wellbore	NORTON 35N-29HZ AWB
Facility	SEC.29-T3N-R66W		

## TARGETS

Name	MD [ft]	TVD [ft]	North [ft]	East [ft]	Grid East [US ft]	Grid North [US ft]	Latitude	Longitude	Shape
RAYMOND PAD SECTION LINES		-28.00	146.28	2776.28	3196636.19	1317360.22	40°12'08.669"N	104°47'45.658"W	polygon
NORTON 35N-29HZ BHL ON PLAT (460'FSL & 1400'FWL, SEC.29) REV-1		7174.00	-4471.77	93.28	3193989.54	1312721.52	40°11'23.035"N	104°48'20.236"W	point
RAYMOND PAD HARDLINES (460' SETBACKS)		7472.00	146.28	2776.28	3196636.19	1317360.22	40°12'08.669"N	104°47'45.658"W	polygon

## WELLPATH COMPOSITION - Ref Wellbore: NORTON 35N-29HZ AWB Ref Wellpath: NORTON 35N-29HZ AWP

Start MD [ft]	End MD [ft]	Positional Uncertainty Model	Log Name/Comment	Wellbore
17.00	882.00	Generic gyro - continuous (Standard)	GYRODATA SURVEYS <117-882>	NORTON 35N-29HZ AWB
882.00	7540.00	NaviTrak (Standard)	BHI MWD SURVEYS 8 3/4" HOLE <969-7540>	NORTON 35N-29HZ AWB
7540.00	11607.00	OnTrak (Standard)	BHI MWD SURVEYS 6 1/8" HOLE <7574-11607>	NORTON 35N-29HZ AWB
11607.00	11667.00	Blind Drilling (std)	Projection to bit	NORTON 35N-29HZ AWB



# Actual Wellpath Report

NORTON 35N-29HZ AWP

Page 7 of 7



## REFERENCE WELLPATH IDENTIFICATION

Operator	KERR-MCGEE OIL & GAS ONSHORE LP	Slot	SLOT#33 NORTON 35N-29HZ (370'FNL & 1307'FWL, SEC.29)
Area	COLORADO	Well	NORTON 35N-29HZ
Field	WELD COUNTY (KERR MCGEE)	Wellbore	NORTON 35N-29HZ AWB
Facility	SEC.29-T3N-R66W		

## WELLPATH COMMENTS

MD [ft]	Inclination [°]	Azimuth [°]	TVD [ft]	Comment
17.00	0.000	319.700	17.00	Tie-On
117.00	0.420	319.700	117.00	Begin GYRO Surveys
882.00	1.380	1.790	881.94	Tie-Into GYRO Surveys
969.00	0.460	273.270	968.93	Begin BHI MWD Surveys
7586.00	88.226	179.002	7154.01	7" Casing Point
11607.00	87.810	180.920	7172.04	End BHI MWD Surveys
11667.00	87.810	180.920	7174.34	Projection to Bit