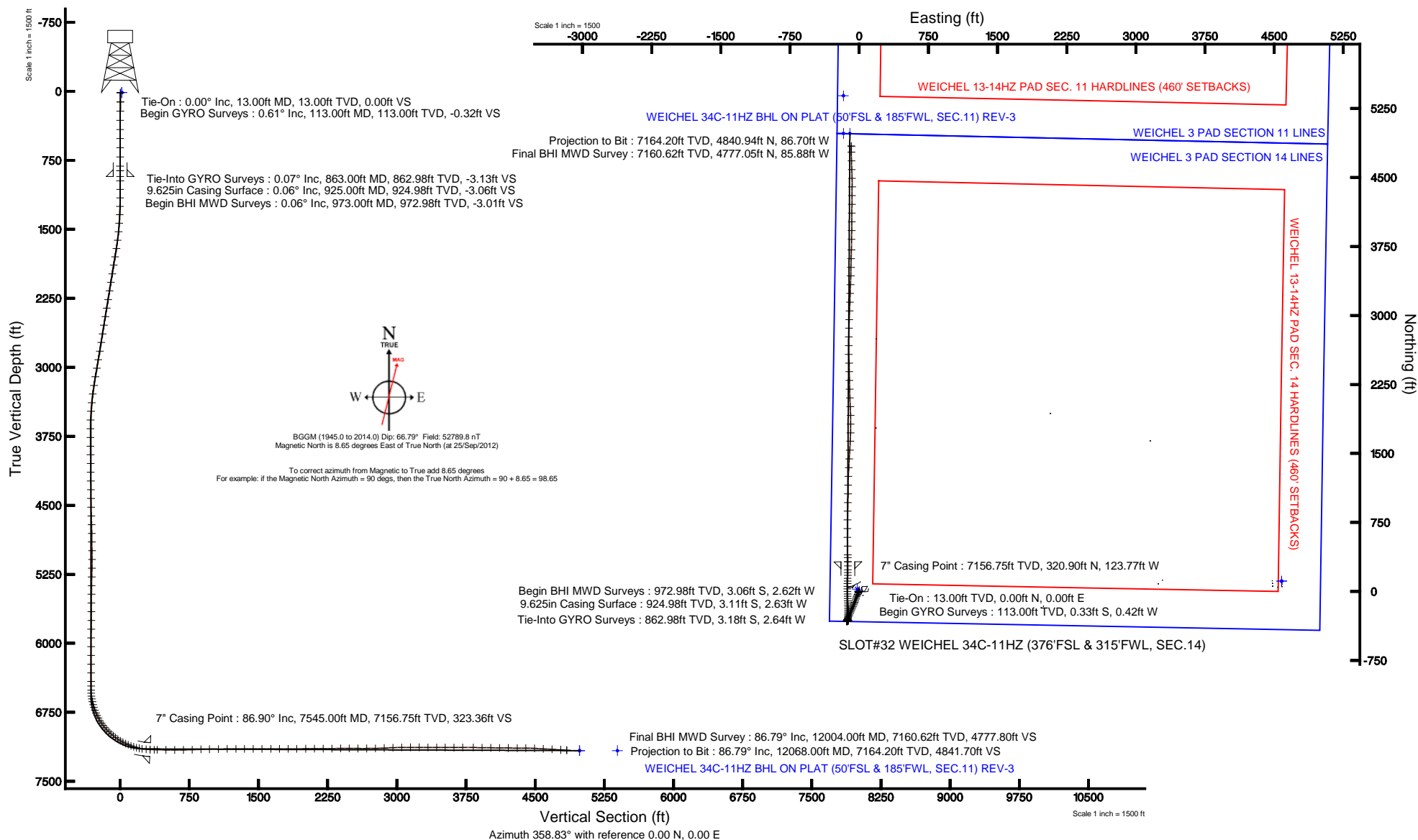


KERR-MCGEE OIL & GAS ONSHORE LP

Location: COLORADO Slot: SLOT#32 WEICHEL 34C-11HZ (376'FSL & 315'FWL, SEC.14)
 Field: WELD COUNTY (KERR MCGEE) Well: WEICHEL 34C-11HZ
 Facility: SEC.14-T2N-R65W Wellbore: WEICHEL 34C-11HZ PWB

Plot reference wellpath is WEICHEL 34C-11HZ (REV-C.0) PWP

True vertical depths are referenced to ENSIGN 145 (RKB)	Grid System: NAD83 / Lambert Colorado SP, Northern Zone (501), US feet
Measured depths are referenced to ENSIGN 145 (RKB)	North Reference: True north
ENSIGN 145 (RKB) to Mean Sea Level: 4906 feet	Scale: True distance
Mean Sea Level to Mud line (At Slot: SLOT#32 WEICHEL 34C-11HZ (376'FSL & 315'FWL, SEC.14)): 0 feet	Depths are in feet
Coordinates are in feet referenced to Slot	Created by: augunora on 06/Dec/2012





Actual Wellpath Report

WEICHEL 34C-11HZ AWP

Page 1 of 7



REFERENCE WELLPATH IDENTIFICATION

Operator	KERR-MCGEE OIL & GAS ONSHORE LP	Slot	SLOT#32 WEICHEL 34C-11HZ (376'FSL & 315'FWL, SEC.14)
Area	COLORADO	Well	WEICHEL 34C-11HZ
Field	WELD COUNTY (KERR MCGEE)	Wellbore	WEICHEL 34C-11HZ AWB
Facility	SEC.14-T2N-R65W		

REPORT SETUP INFORMATION

Projection System	NAD83 / Lambert Colorado SP, Northern Zone (501), US feet	Software System	WellArchitect® 3.0.0
North Reference	True	User	Augunora
Scale	0.999959	Report Generated	06/Dec/2012 at 11:14
Convergence at slot	0.56° East	Database/Source file	WA_ANADARKO/WEICHEL_34C-11HZ_AWB.xml

WELLPATH LOCATION

	Local coordinates		Grid coordinates		Geographic coordinates	
	North[ft]	East[ft]	Easting[US ft]	Northing[US ft]	Latitude	Longitude
Slot Location	-4254.51	-1715.17	3240599.27	1292244.84	40°07'56.644"N	104°38'22.214"W
Facility Reference Pt			3242272.71	1296515.72	40°08'38.688"N	104°38'00.132"W
Field Reference Pt			3197771.84	1268891.29	40°04'09.600"N	104°47'36.000"W

WELLPATH DATUM

Calculation method	Minimum curvature	ENSIGN 145 (RKB) to Facility Vertical Datum	4906.00ft
Horizontal Reference Pt	Slot	ENSIGN 145 (RKB) to Mean Sea Level	4906.00ft
Vertical Reference Pt	ENSIGN 145 (RKB)	ENSIGN 145 (RKB) to Mud Line at Slot (SLOT#32 WEICHEL 34C-11HZ (376'FSL & 315'FWL, SEC.14))	4906.00ft
MD Reference Pt	ENSIGN 145 (RKB)	Section Origin	N 0.00, E 0.00 ft
Field Vertical Reference	Mean Sea Level	Section Azimuth	358.97°



Actual Wellpath Report

WEICHEL 34C-11HZ AWP

Page 2 of 7



REFERENCE WELLPATH IDENTIFICATION

Operator	KERR-MCGEE OIL & GAS ONSHORE LP	Slot	SLOT#32 WEICHEL 34C-11HZ (376'FSL & 315'FWL, SEC.14)
Area	COLORADO	Well	WEICHEL 34C-11HZ
Field	WELD COUNTY (KERR MCGEE)	Wellbore	WEICHEL 34C-11HZ AWB
Facility	SEC.14-T2N-R65W		

WELLPATH DATA (152 stations) † = interpolated/extrapolated station

MD [ft]	Inclination [°]	Azimuth [°]	TVD [ft]	Vert Sect [ft]	North [ft]	East [ft]	Latitude	Longitude	DLS [°/100ft]	Comments
0.00†	0.000	232.060	0.00	0.00	0.00	0.00	40°07'56.644"N	104°38'22.214"W	0.00	
13.00	0.000	232.060	13.00	0.00	0.00	0.00	40°07'56.644"N	104°38'22.214"W	0.00	Tie-On
113.00	0.610	232.060	113.00	-0.32	-0.33	-0.42	40°07'56.641"N	104°38'22.219"W	0.61	Begin GYRO Surveys
213.00	0.580	202.110	212.99	-1.10	-1.12	-1.03	40°07'56.633"N	104°38'22.227"W	0.31	
313.00	0.250	207.850	312.99	-1.76	-1.79	-1.32	40°07'56.626"N	104°38'22.231"W	0.33	
413.00	0.280	255.010	412.99	-2.01	-2.04	-1.66	40°07'56.624"N	104°38'22.235"W	0.21	
513.00	0.520	261.810	512.99	-2.13	-2.17	-2.35	40°07'56.623"N	104°38'22.244"W	0.24	
613.00	0.450	189.710	612.98	-2.57	-2.62	-2.86	40°07'56.618"N	104°38'22.251"W	0.57	
713.00	0.180	160.560	712.98	-3.10	-3.16	-2.88	40°07'56.613"N	104°38'22.251"W	0.31	
813.00	0.160	63.950	812.98	-3.19	-3.24	-2.70	40°07'56.612"N	104°38'22.249"W	0.25	
863.00	0.070	358.610	862.98	-3.13	-3.18	-2.64	40°07'56.613"N	104°38'22.248"W	0.29	Tie-Into GYRO Surveys
973.00	0.060	17.790	972.98	-3.01	-3.06	-2.62	40°07'56.614"N	104°38'22.248"W	0.02	Begin BHI MWD Surveys
1064.00	0.150	89.400	1063.98	-2.97	-3.01	-2.49	40°07'56.614"N	104°38'22.246"W	0.16	
1157.00	0.410	91.810	1156.98	-2.99	-3.02	-2.03	40°07'56.614"N	104°38'22.240"W	0.28	
1249.00	1.330	205.880	1248.97	-3.95	-3.99	-2.17	40°07'56.605"N	104°38'22.242"W	1.68	
1341.00	2.890	202.820	1340.91	-7.03	-7.09	-3.53	40°07'56.574"N	104°38'22.259"W	1.70	
1433.00	4.690	206.510	1432.70	-12.48	-12.60	-6.11	40°07'56.520"N	104°38'22.293"W	1.97	
1525.00	6.410	210.060	1524.27	-20.22	-20.41	-10.36	40°07'56.442"N	104°38'22.347"W	1.91	
1620.00	7.960	207.810	1618.52	-30.52	-30.82	-16.09	40°07'56.339"N	104°38'22.421"W	1.66	
1710.00	9.400	203.760	1707.49	-42.65	-43.05	-21.96	40°07'56.219"N	104°38'22.497"W	1.74	
1802.00	10.220	201.630	1798.14	-57.01	-57.52	-27.99	40°07'56.076"N	104°38'22.574"W	0.97	
1894.00	10.050	200.200	1888.71	-72.02	-72.64	-33.77	40°07'55.926"N	104°38'22.649"W	0.33	
1989.00	9.560	198.630	1982.32	-87.18	-87.89	-39.16	40°07'55.775"N	104°38'22.718"W	0.59	
2084.00	10.110	198.480	2075.92	-102.47	-103.28	-44.32	40°07'55.623"N	104°38'22.785"W	0.58	
2179.00	9.150	199.270	2169.58	-117.41	-118.32	-49.46	40°07'55.475"N	104°38'22.851"W	1.02	
2274.00	9.410	198.320	2263.34	-131.82	-132.82	-54.39	40°07'55.331"N	104°38'22.914"W	0.32	
2369.00	10.410	200.650	2356.92	-147.13	-148.22	-59.86	40°07'55.179"N	104°38'22.985"W	1.13	
2463.00	10.780	204.470	2449.32	-162.95	-164.17	-66.49	40°07'55.022"N	104°38'23.070"W	0.84	
2558.00	9.940	205.220	2542.77	-178.33	-179.68	-73.67	40°07'54.868"N	104°38'23.162"W	0.90	
2653.00	9.890	204.350	2636.35	-193.05	-194.53	-80.53	40°07'54.722"N	104°38'23.251"W	0.17	
2748.00	9.820	202.550	2729.95	-207.85	-209.44	-87.00	40°07'54.574"N	104°38'23.334"W	0.33	
2843.00	10.350	201.560	2823.48	-223.15	-224.86	-93.24	40°07'54.422"N	104°38'23.414"W	0.59	
2937.00	10.570	201.180	2915.92	-238.93	-240.75	-99.46	40°07'54.265"N	104°38'23.494"W	0.25	
3032.00	10.970	202.750	3009.25	-255.27	-257.21	-106.10	40°07'54.102"N	104°38'23.580"W	0.52	
3127.00	10.320	204.150	3102.61	-271.25	-273.31	-113.08	40°07'53.943"N	104°38'23.670"W	0.74	
3222.00	9.790	205.550	3196.15	-286.17	-288.37	-120.04	40°07'53.794"N	104°38'23.759"W	0.61	
3317.00	8.370	202.680	3289.96	-299.72	-302.03	-126.19	40°07'53.659"N	104°38'23.839"W	1.57	
3412.00	6.240	203.540	3384.18	-310.75	-313.15	-130.92	40°07'53.549"N	104°38'23.900"W	2.24	
3506.00	3.730	189.610	3477.82	-318.41	-320.85	-133.47	40°07'53.473"N	104°38'23.932"W	2.95	
3601.00	2.150	169.970	3572.70	-323.20	-325.65	-133.68	40°07'53.426"N	104°38'23.935"W	1.95	
3696.00	0.720	216.030	3667.67	-325.44	-327.89	-133.72	40°07'53.404"N	104°38'23.936"W	1.82	
3791.00	0.460	359.610	3762.66	-325.53	-327.99	-134.07	40°07'53.403"N	104°38'23.940"W	1.18	
3886.00	0.710	349.040	3857.66	-324.57	-327.03	-134.19	40°07'53.412"N	104°38'23.942"W	0.29	
3980.00	0.760	318.880	3951.65	-323.52	-325.99	-134.71	40°07'53.423"N	104°38'23.948"W	0.41	
4075.00	0.660	299.590	4046.64	-322.76	-325.24	-135.60	40°07'53.430"N	104°38'23.960"W	0.27	



Actual Wellpath Report

WEICHEL 34C-11HZ AWP

Page 3 of 7



REFERENCE WELLPATH IDENTIFICATION

Operator	KERR-MCGEE OIL & GAS ONSHORE LP	Slot	SLOT#32 WEICHEL 34C-11HZ (376'FSL & 315'FWL, SEC.14)
Area	COLORADO	Well	WEICHEL 34C-11HZ
Field	WELD COUNTY (KERR MCGEE)	Wellbore	WEICHEL 34C-11HZ AWB
Facility	SEC.14-T2N-R65W		

WELLPATH DATA (152 stations)

MD [ft]	Inclination [°]	Azimuth [°]	TVD [ft]	Vert Sect [ft]	North [ft]	East [ft]	Latitude	Longitude	DLS [°/100ft]	Comments
4170.00	0.610	41.490	4141.64	-322.11	-324.59	-135.74	40°07'53.436"N	104°38'23.962"W	1.04	
4265.00	0.860	35.860	4236.63	-321.17	-323.64	-134.99	40°07'53.446"N	104°38'23.952"W	0.27	
4359.00	0.800	21.170	4330.62	-320.00	-322.45	-134.34	40°07'53.457"N	104°38'23.943"W	0.23	
4454.00	0.970	22.460	4425.61	-318.64	-321.09	-133.79	40°07'53.471"N	104°38'23.936"W	0.18	
4549.00	0.930	9.480	4520.60	-317.15	-319.59	-133.35	40°07'53.486"N	104°38'23.931"W	0.23	
4644.00	1.630	356.380	4615.57	-315.04	-317.48	-133.31	40°07'53.507"N	104°38'23.930"W	0.79	
4739.00	1.480	0.770	4710.54	-312.46	-314.90	-133.38	40°07'53.532"N	104°38'23.931"W	0.20	
4834.00	1.280	43.840	4805.51	-310.49	-312.91	-132.63	40°07'53.552"N	104°38'23.922"W	1.08	
4928.00	1.160	73.650	4899.49	-309.49	-311.89	-130.99	40°07'53.562"N	104°38'23.900"W	0.68	
5023.00	1.600	35.930	4994.47	-308.18	-310.54	-129.29	40°07'53.575"N	104°38'23.879"W	1.04	
5118.00	0.620	103.010	5089.45	-307.24	-309.58	-128.01	40°07'53.585"N	104°38'23.862"W	1.55	
5213.00	1.660	145.840	5184.43	-308.52	-310.84	-126.74	40°07'53.572"N	104°38'23.846"W	1.34	
5308.00	1.550	142.790	5279.40	-310.71	-313.00	-125.19	40°07'53.551"N	104°38'23.826"W	0.15	
5403.00	1.050	145.890	5374.37	-312.47	-314.74	-123.92	40°07'53.534"N	104°38'23.809"W	0.53	
5497.00	0.820	141.310	5468.36	-313.73	-315.98	-123.02	40°07'53.521"N	104°38'23.798"W	0.26	
5592.00	0.470	119.380	5563.35	-314.46	-316.70	-122.25	40°07'53.514"N	104°38'23.788"W	0.44	
5687.00	0.210	173.580	5658.35	-314.83	-317.07	-121.89	40°07'53.511"N	104°38'23.783"W	0.41	
5782.00	0.500	138.550	5753.35	-315.32	-317.55	-121.60	40°07'53.506"N	104°38'23.780"W	0.37	
5877.00	0.480	146.850	5848.35	-315.98	-318.20	-121.11	40°07'53.500"N	104°38'23.773"W	0.08	
5972.00	0.430	163.810	5943.34	-316.66	-318.87	-120.79	40°07'53.493"N	104°38'23.769"W	0.15	
6066.00	0.400	136.020	6037.34	-317.24	-319.45	-120.47	40°07'53.487"N	104°38'23.765"W	0.21	
6161.00	0.030	343.100	6132.34	-317.46	-319.66	-120.24	40°07'53.485"N	104°38'23.762"W	0.45	
6256.00	0.000	8.540	6227.34	-317.43	-319.64	-120.25	40°07'53.485"N	104°38'23.762"W	0.03	
6351.00	0.550	267.220	6322.34	-317.45	-319.66	-120.71	40°07'53.485"N	104°38'23.768"W	0.58	
6445.00	0.680	268.990	6416.33	-317.46	-319.69	-121.71	40°07'53.485"N	104°38'23.781"W	0.14	
6494.00	0.770	270.840	6465.33	-317.45	-319.69	-122.33	40°07'53.485"N	104°38'23.789"W	0.19	
6541.00	1.270	274.000	6512.32	-317.39	-319.65	-123.17	40°07'53.485"N	104°38'23.800"W	1.07	
6572.00	2.660	326.620	6543.30	-316.76	-319.03	-123.91	40°07'53.491"N	104°38'23.809"W	6.91	
6604.00	6.320	350.580	6575.20	-314.38	-316.67	-124.60	40°07'53.515"N	104°38'23.818"W	12.61	
6636.00	10.760	358.730	6606.84	-309.65	-311.94	-124.96	40°07'53.561"N	104°38'23.823"W	14.35	
6667.00	13.170	5.500	6637.17	-303.25	-305.53	-124.68	40°07'53.625"N	104°38'23.819"W	8.98	
6699.00	15.020	8.020	6668.20	-295.53	-297.80	-123.76	40°07'53.701"N	104°38'23.807"W	6.09	
6731.00	17.740	7.030	6698.90	-286.61	-288.85	-122.58	40°07'53.790"N	104°38'23.792"W	8.54	
6762.00	20.070	3.990	6728.23	-276.63	-278.85	-121.63	40°07'53.888"N	104°38'23.780"W	8.16	
6794.00	22.740	1.030	6758.02	-264.98	-267.19	-121.14	40°07'54.004"N	104°38'23.774"W	9.00	
6825.00	25.150	359.620	6786.35	-252.40	-254.61	-121.08	40°07'54.128"N	104°38'23.773"W	7.99	
6857.00	27.570	0.170	6815.02	-238.20	-240.40	-121.10	40°07'54.268"N	104°38'23.773"W	7.60	
6889.00	30.620	0.960	6842.98	-222.64	-224.85	-120.94	40°07'54.422"N	104°38'23.771"W	9.61	
6920.00	34.130	0.020	6869.16	-206.05	-208.25	-120.81	40°07'54.586"N	104°38'23.769"W	11.44	
6952.00	37.480	359.300	6895.10	-187.34	-189.53	-120.92	40°07'54.771"N	104°38'23.771"W	10.55	
6983.00	40.130	358.160	6919.26	-167.91	-170.11	-121.36	40°07'54.963"N	104°38'23.776"W	8.85	
7015.00	43.000	357.130	6943.20	-146.69	-148.90	-122.23	40°07'55.173"N	104°38'23.788"W	9.22	
7046.00	45.530	356.520	6965.40	-125.07	-127.30	-123.44	40°07'55.386"N	104°38'23.803"W	8.28	
7078.00	48.500	357.800	6987.21	-101.68	-103.92	-124.59	40°07'55.617"N	104°38'23.818"W	9.73	
7110.00	50.880	358.480	7007.92	-77.28	-79.54	-125.38	40°07'55.858"N	104°38'23.828"W	7.61	



Actual Wellpath Report

WEICHEL 34C-11HZ AWP

Page 4 of 7



REFERENCE WELLPATH IDENTIFICATION

Operator	KERR-MCGEE OIL & GAS ONSHORE LP	Slot	SLOT#32 WEICHEL 34C-11HZ (376'FSL & 315'FWL, SEC.14)
Area	COLORADO	Well	WEICHEL 34C-11HZ
Field	WELD COUNTY (KERR MCGEE)	Wellbore	WEICHEL 34C-11HZ AWB
Facility	SEC.14-T2N-R65W		

WELLPATH DATA (152 stations) † = interpolated/extrapolated station

MD [ft]	Inclination [°]	Azimuth [°]	TVD [ft]	Vert Sect [ft]	North [ft]	East [ft]	Latitude	Longitude	DLS [°/100ft]	Comments
7141.00	53.830	358.850	7026.85	-52.74	-55.00	-125.95	40°07'56.100"N	104°38'23.836"W	9.56	
7173.00	56.610	358.040	7045.10	-26.46	-28.73	-126.66	40°07'56.360"N	104°38'23.845"W	8.93	
7205.00	59.500	358.670	7062.03	0.69	-1.59	-127.44	40°07'56.628"N	104°38'23.855"W	9.18	
7236.00	62.100	359.770	7077.15	27.75	25.46	-127.81	40°07'56.896"N	104°38'23.859"W	8.94	
7268.00	64.980	0.520	7091.41	56.39	54.11	-127.73	40°07'57.179"N	104°38'23.858"W	9.24	
7299.00	66.260	1.330	7104.20	84.61	82.34	-127.28	40°07'57.458"N	104°38'23.853"W	4.77	
7331.00	68.370	2.530	7116.55	114.09	111.85	-126.28	40°07'57.749"N	104°38'23.840"W	7.45	
7363.00	71.770	1.810	7127.45	144.12	141.90	-125.14	40°07'58.046"N	104°38'23.825"W	10.83	
7395.00	75.350	1.710	7136.51	174.77	172.58	-124.20	40°07'58.349"N	104°38'23.813"W	11.19	
7426.00	78.610	0.660	7143.49	204.95	202.77	-123.58	40°07'58.648"N	104°38'23.805"W	11.02	
7457.00	81.440	0.100	7148.86	235.47	233.29	-123.37	40°07'58.949"N	104°38'23.802"W	9.30	
7501.00	85.530	359.700	7153.85	279.17	277.00	-123.45	40°07'59.381"N	104°38'23.803"W	9.34	
7545.00†	86.904	359.467	7156.75	323.07	320.90	-123.77	40°07'59.815"N	104°38'23.808"W	3.17	7" Casing Point
7590.00	88.310	359.230	7158.63	368.03	365.86	-124.28	40°08'00.259"N	104°38'23.814"W	3.17	
7621.00	88.550	359.380	7159.48	399.01	396.85	-124.66	40°08'00.566"N	104°38'23.819"W	0.91	
7716.00	89.900	359.110	7160.77	494.00	491.83	-125.91	40°08'01.504"N	104°38'23.835"W	1.45	
7811.00	89.750	358.650	7161.06	589.00	586.81	-127.77	40°08'02.443"N	104°38'23.859"W	0.51	
7906.00	90.330	0.340	7160.99	683.99	681.80	-128.60	40°08'03.382"N	104°38'23.870"W	1.88	
8001.00	92.270	1.150	7158.84	778.92	776.76	-127.37	40°08'04.320"N	104°38'23.854"W	2.21	
8095.00	91.960	1.340	7155.37	872.78	870.68	-125.33	40°08'05.248"N	104°38'23.828"W	0.39	
8190.00	90.700	1.190	7153.16	967.68	965.63	-123.23	40°08'06.186"N	104°38'23.801"W	1.34	
8285.00	90.830	0.330	7151.89	1062.62	1060.61	-121.97	40°08'07.125"N	104°38'23.784"W	0.92	
8380.00	91.410	0.540	7150.04	1157.57	1155.59	-121.25	40°08'08.064"N	104°38'23.775"W	0.65	
8475.00	89.840	3.000	7149.00	1252.44	1250.52	-118.32	40°08'09.002"N	104°38'23.737"W	3.07	
8569.00	89.750	3.140	7149.34	1346.20	1344.39	-113.28	40°08'09.929"N	104°38'23.673"W	0.18	
8664.00	90.400	3.390	7149.21	1440.94	1439.23	-107.87	40°08'10.867"N	104°38'23.603"W	0.73	
8759.00	89.440	3.210	7149.34	1535.66	1534.08	-102.40	40°08'11.804"N	104°38'23.532"W	1.03	
8858.00	90.700	2.750	7149.22	1634.42	1632.94	-97.26	40°08'12.781"N	104°38'23.466"W	1.35	
8949.00	88.830	0.680	7149.60	1725.31	1723.89	-94.53	40°08'13.680"N	104°38'23.431"W	3.07	
9044.00	90.360	1.040	7150.27	1820.25	1818.87	-93.11	40°08'14.618"N	104°38'23.413"W	1.65	
9138.00	90.640	358.230	7149.45	1914.23	1912.86	-93.71	40°08'15.547"N	104°38'23.421"W	3.00	
9233.00	90.890	357.380	7148.18	2009.20	2007.78	-97.34	40°08'16.485"N	104°38'23.467"W	0.93	
9328.00	90.300	357.590	7147.19	2104.16	2102.68	-101.51	40°08'17.423"N	104°38'23.521"W	0.66	
9423.00	90.060	358.900	7146.89	2199.15	2197.63	-104.42	40°08'18.361"N	104°38'23.559"W	1.40	
9518.00	90.760	359.240	7146.21	2294.15	2292.62	-105.96	40°08'19.300"N	104°38'23.578"W	0.82	
9613.00	90.790	358.950	7144.93	2389.14	2387.60	-107.46	40°08'20.238"N	104°38'23.598"W	0.31	
9707.00	89.900	358.610	7144.36	2483.14	2481.57	-109.47	40°08'21.167"N	104°38'23.623"W	1.01	
9802.00	88.890	357.660	7145.37	2578.12	2576.52	-112.56	40°08'22.105"N	104°38'23.663"W	1.46	
9897.00	90.920	0.820	7145.52	2673.10	2671.49	-113.82	40°08'23.044"N	104°38'23.679"W	3.95	
9992.00	91.170	0.230	7143.79	2768.05	2766.47	-112.95	40°08'23.983"N	104°38'23.668"W	0.67	
10087.00	92.370	1.960	7140.86	2862.93	2861.40	-111.13	40°08'24.921"N	104°38'23.645"W	2.22	
10181.00	92.590	1.760	7136.79	2956.73	2955.26	-108.08	40°08'25.848"N	104°38'23.606"W	0.32	
10276.00	90.920	2.350	7133.88	3051.54	3050.16	-104.68	40°08'26.786"N	104°38'23.562"W	1.86	
10371.00	89.780	1.850	7133.30	3146.40	3145.09	-101.20	40°08'27.724"N	104°38'23.517"W	1.31	
10466.00	90.150	2.100	7133.36	3241.27	3240.03	-97.92	40°08'28.662"N	104°38'23.475"W	0.47	



Actual Wellpath Report

WEICHEL 34C-11HZ AWP

Page 5 of 7



REFERENCE WELLPATH IDENTIFICATION

Operator	KERR-MCGEE OIL & GAS ONSHORE LP	Slot	SLOT#32 WEICHEL 34C-11HZ (376'FSL & 315'FWL, SEC.14)
Area	COLORADO	Well	WEICHEL 34C-11HZ
Field	WELD COUNTY (KERR MCGEE)	Wellbore	WEICHEL 34C-11HZ AWB
Facility	SEC.14-T2N-R65W		

WELLPATH DATA (152 stations)

MD [ft]	Inclination [°]	Azimuth [°]	TVD [ft]	Vert Sect [ft]	North [ft]	East [ft]	Latitude	Longitude	DLS [°/100ft]	Comments
10561.00	89.190	1.730	7133.90	3336.14	3334.98	-94.75	40°08'29.601"N	104°38'23.434"W	1.08	
10656.00	89.500	1.530	7134.99	3431.03	3429.93	-92.05	40°08'30.539"N	104°38'23.399"W	0.39	
10750.00	89.870	1.310	7135.51	3524.94	3523.90	-89.72	40°08'31.467"N	104°38'23.369"W	0.46	
10845.00	90.270	1.310	7135.39	3619.86	3618.87	-87.55	40°08'32.406"N	104°38'23.341"W	0.42	
10940.00	90.670	2.090	7134.61	3714.75	3713.83	-84.73	40°08'33.344"N	104°38'23.305"W	0.92	
11055.00	88.920	0.110	7135.02	3829.66	3828.80	-82.52	40°08'34.481"N	104°38'23.277"W	2.30	
11150.00	89.010	0.590	7136.74	3924.62	3923.78	-81.94	40°08'35.419"N	104°38'23.269"W	0.51	
11245.00	89.260	0.540	7138.17	4019.57	4018.76	-81.00	40°08'36.358"N	104°38'23.257"W	0.27	
11340.00	89.260	0.550	7139.40	4114.53	4113.75	-80.10	40°08'37.296"N	104°38'23.245"W	0.01	
11435.00	89.470	0.350	7140.45	4209.49	4208.74	-79.35	40°08'38.235"N	104°38'23.236"W	0.31	
11530.00	89.710	0.600	7141.13	4304.45	4303.74	-78.57	40°08'39.174"N	104°38'23.226"W	0.36	
11624.00	90.060	1.140	7141.32	4398.40	4397.73	-77.14	40°08'40.103"N	104°38'23.207"W	0.68	
11719.00	86.660	358.320	7144.04	4493.33	4492.66	-77.58	40°08'41.041"N	104°38'23.213"W	4.65	
11814.00	86.620	357.540	7149.61	4588.15	4587.44	-81.01	40°08'41.977"N	104°38'23.257"W	0.82	
11909.00	86.650	358.650	7155.19	4682.97	4682.22	-84.16	40°08'42.914"N	104°38'23.298"W	1.17	
12004.00	86.790	359.270	7160.62	4777.82	4777.05	-85.88	40°08'43.851"N	104°38'23.320"W	0.67	Final BHI MWD Survey
12068.00	86.790	359.270	7164.20	4841.72	4840.94	-86.70	40°08'44.483"N	104°38'23.330"W	0.00	Projection to Bit

HOLE & CASING SECTIONS - Ref Wellbore: WEICHEL 34C-11HZ AWB Ref Wellpath: WEICHEL 34C-11HZ AWP

String/Diameter	Start MD [ft]	End MD [ft]	Interval [ft]	Start TVD [ft]	End TVD [ft]	Start N/S [ft]	Start E/W [ft]	End N/S [ft]	End E/W [ft]
13.5in Open Hole	13.00	925.00	912.00	13.00	924.98	0.00	0.00	-3.11	-2.63
9.625in Casing Surface	13.00	925.00	912.00	13.00	924.98	0.00	0.00	-3.11	-2.63
8.75in Open Hole	925.00	7555.00	6630.00	924.98	7157.27	-3.11	-2.63	330.89	-123.87
7in Casing Intermediate	13.00	7545.00	7532.00	13.00	7156.75	0.00	0.00	320.90	-123.77
6.125in Open Hole	7545.00	12068.00	4523.00	7156.75	7164.20	320.90	-123.77	4840.94	-86.70



Actual Wellpath Report

WEICHEL 34C-11HZ AWP

Page 6 of 7



REFERENCE WELLPATH IDENTIFICATION

Operator	KERR-MCGEE OIL & GAS ONSHORE LP	Slot	SLOT#32 WEICHEL 34C-11HZ (376'FSL & 315'FWL, SEC.14)
Area	COLORADO	Well	WEICHEL 34C-11HZ
Field	WELD COUNTY (KERR MCGEE)	Wellbore	WEICHEL 34C-11HZ AWB
Facility	SEC.14-T2N-R65W		

TARGETS

Name	MD [ft]	TVD [ft]	North [ft]	East [ft]	Grid East [US ft]	Grid North [US ft]	Latitude	Longitude	Shape
WEICHEL 3 PAD SECTION 11 LINES		11.00	109.67	4583.23	3245181.02	1292398.97	40°07'57.724"N	104°37'23.207"W	polygon
WEICHEL 3 PAD SECTION 14 LINES		11.00	109.67	4583.23	3245181.02	1292398.97	40°07'57.724"N	104°37'23.207"W	polygon
WEICHEL 34C-11HZ BHL ON PLAT (460'FSL & 115'fwl, SEC.11) REV-1		7169.00	5389.75	-171.70	3240375.29	1297632.44	40°08'49.906"N	104°38'24.425"W	point
WEICHEL 34C-11HZ BHL ON PLAT (50'FSL & 115'FWL, SEC.11) REV-2		7169.00	4979.75	-171.70	3240379.27	1297222.47	40°08'45.854"N	104°38'24.425"W	point
WEICHEL 34C-11HZ BHL ON PLAT (50'FSL & 185'FWL, SEC.11) REV-3		7169.00	4979.75	-101.70	3240449.26	1297223.15	40°08'45.854"N	104°38'23.524"W	point
WEICHEL 13-14HZ PAD SEC. 11 HARDLINES (460' SETBACKS)		7500.00	0.00	0.00	3240599.27	1292244.84	40°07'56.644"N	104°38'22.214"W	polygon
WEICHEL 13-14HZ PAD SEC. 14 HARDLINES (460' SETBACKS)		7501.00	22.57	-19.88	3240579.17	1292267.21	40°07'56.867"N	104°38'22.470"W	polygon

WELLPATH COMPOSITION - Ref Wellbore: WEICHEL 34C-11HZ AWB Ref Wellpath: WEICHEL 34C-11HZ AWP

Start MD [ft]	End MD [ft]	Positional Uncertainty Model	Log Name/Comment	Wellbore
13.00	863.00	Generic gyro - continuous (Standard)	GYRODATA SURVEYS <113-863>	WEICHEL 34C-11HZ AWB
863.00	7501.00	NaviTrak (IFR)	BHI MWD SURVEYS 8 3/4" HOLE <973-7501>	WEICHEL 34C-11HZ AWB
7501.00	12004.00	OnTrak (IFR)_1	BHI MWD SURVEYS 6 1/8" HOLE <7590-12004>	WEICHEL 34C-11HZ AWB
12004.00	12068.00	Blind Drilling (std)	Projection to bit	WEICHEL 34C-11HZ AWB



Actual Wellpath Report

WEICHEL 34C-11HZ AWP

Page 7 of 7



REFERENCE WELLPATH IDENTIFICATION

Operator	KERR-MCGEE OIL & GAS ONSHORE LP	Slot	SLOT#32 WEICHEL 34C-11HZ (376'FSL & 315'FWL, SEC.14)
Area	COLORADO	Well	WEICHEL 34C-11HZ
Field	WELD COUNTY (KERR MCGEE)	Wellbore	WEICHEL 34C-11HZ AWB
Facility	SEC.14-T2N-R65W		

WELLPATH COMMENTS

MD [ft]	Inclination [°]	Azimuth [°]	TVD [ft]	Comment
13.00	0.000	232.060	13.00	Tie-On
113.00	0.610	232.060	113.00	Begin GYRO Surveys
863.00	0.070	358.610	862.98	Tie-Into GYRO Surveys
973.00	0.060	17.790	972.98	Begin BHI MWD Surveys
7545.00	86.904	359.467	7156.75	7" Casing Point
12004.00	86.790	359.270	7160.62	Final BHI MWD Survey
12068.00	86.790	359.270	7164.20	Projection to Bit