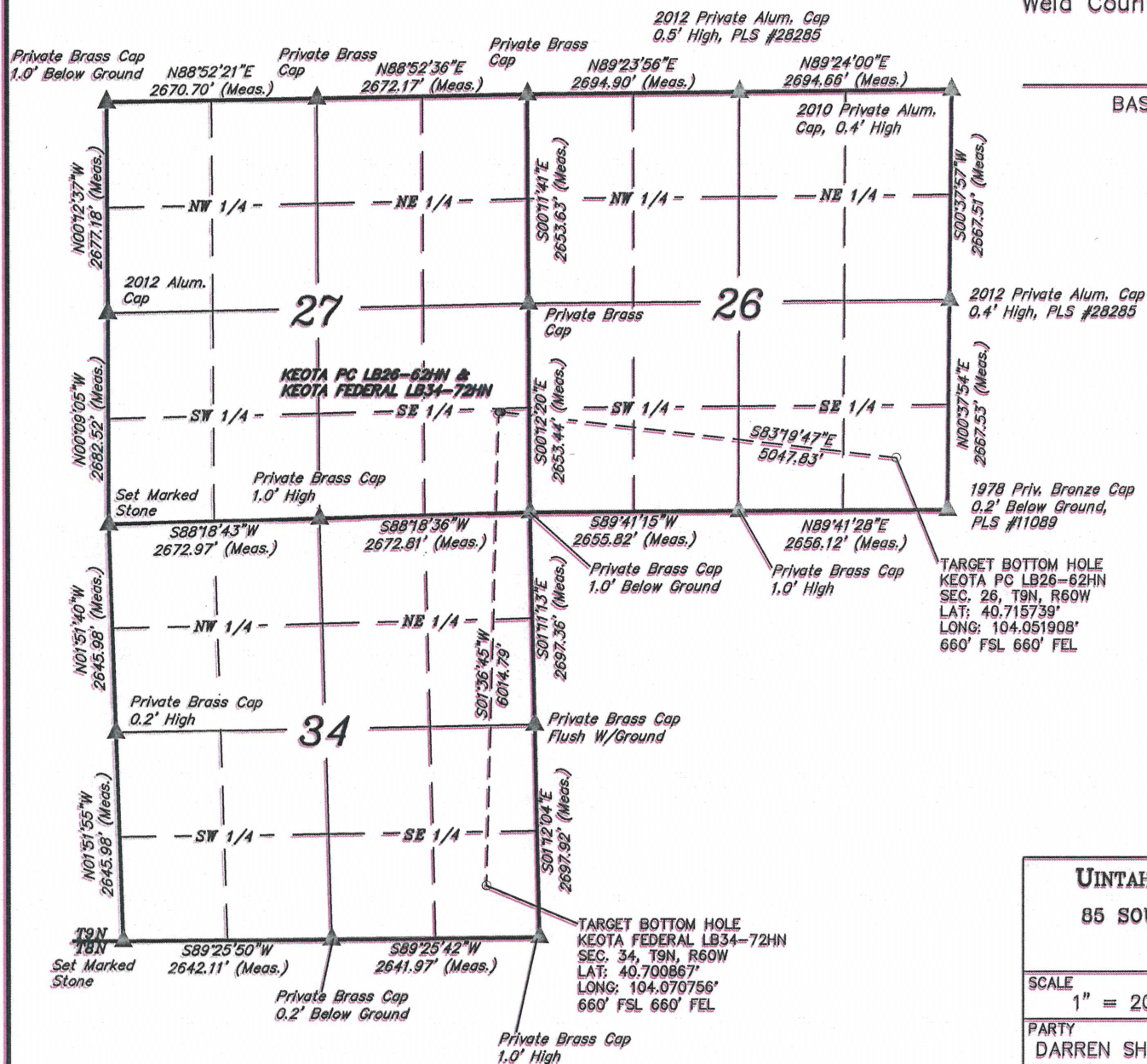


MULTI WELL PLAN T9N, R60W, 6th P.M.

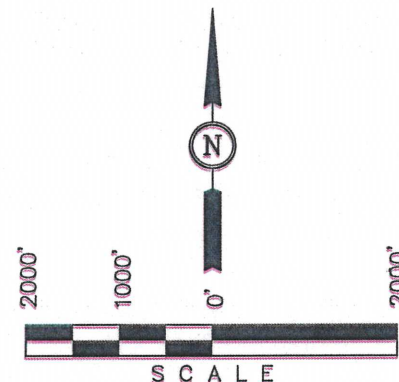
NOBLE ENERGY, INC.

Well location, KEOTA PC LB26-62HN & KEOTA FEDERAL LB34-72HN, located as shown in the SE 1/4 SE 1/4 of Section 27, T9N, R60W, 6th P.M., Weld County, Colorado.



BASIS OF BEARINGS

BASIS OF BEARINGS IS A G.P.S. OBSERVATION.



LEGEND:

- = PROPOSED WELL HEAD.
- = BOTTOM HOLE
- ▲ = SECTION CORNERS LOCATED.

UINTAH ENGINEERING & LAND SURVEYING
85 SOUTH 200 EAST - VERNAL, UTAH 84078
(435) 789-1017

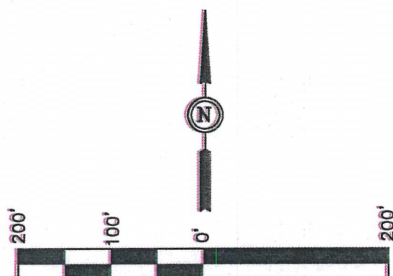
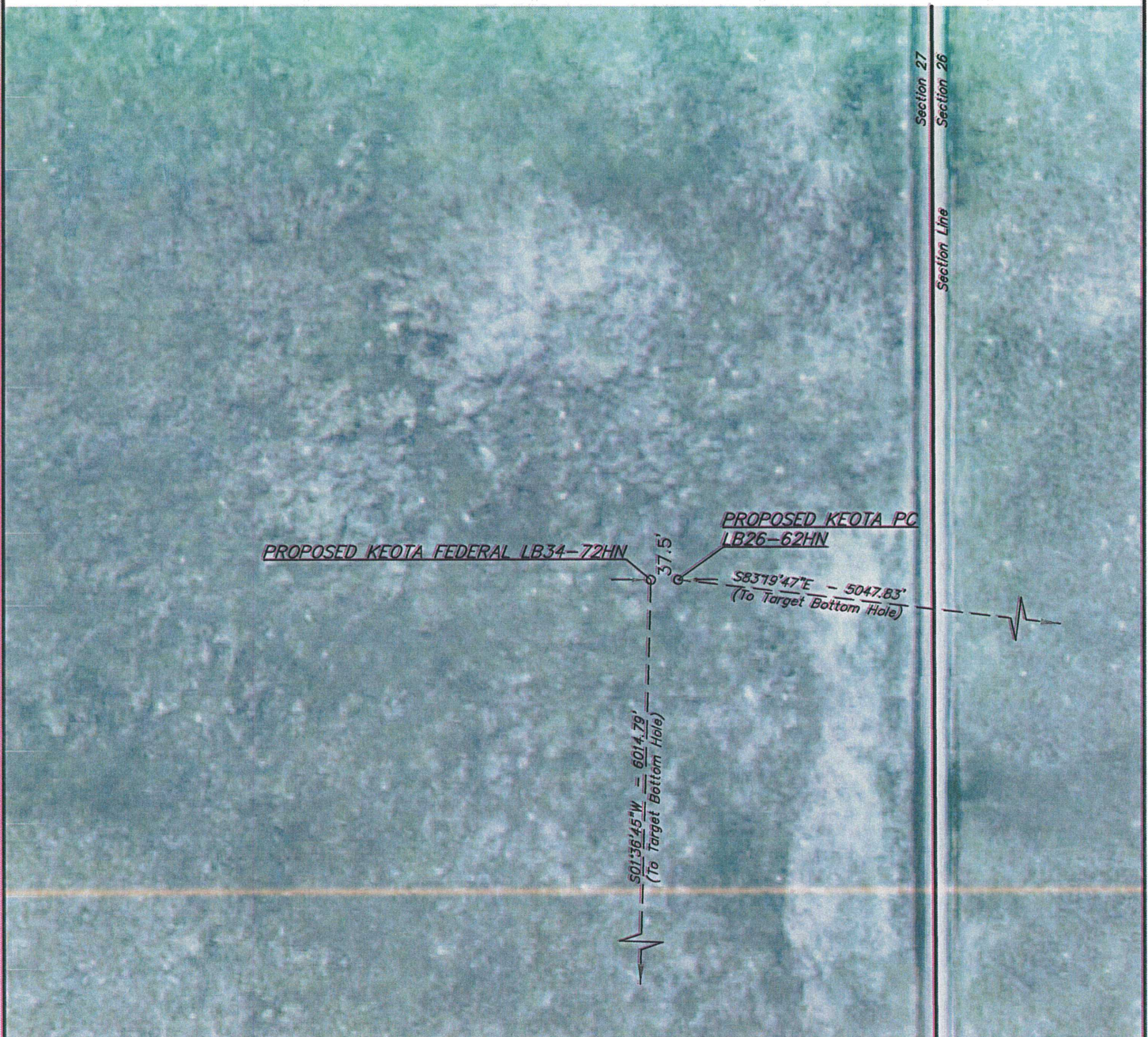
SCALE 1" = 2000'	DATE SURVEYED: 07-31-12	DATE DRAWN: 09-03-12
PARTY DARREN SHANKS K.H. S.R.L.	REFERENCES G.L.O. PLAT	
WEATHER WARM	FILE NOBLE ENERGY, INC.	

NOBLE ENERGY, INC.

MULTI-WELL PLAN

KEOTA PC LB26-62HN & KEOTA FEDERAL LB34-72HN
SECTION 27, T9N, R60W, 6th P.M.

DATE: 09-04-12
DRAWN BY: S.R.L.



PAD DETAILS:
WELL HEAD SPACING = 37.5'

UINTAH ENGINEERING & LAND SURVEYING
85 So. 200 East * Vernal, Utah 84078 * (435) 789-1017