

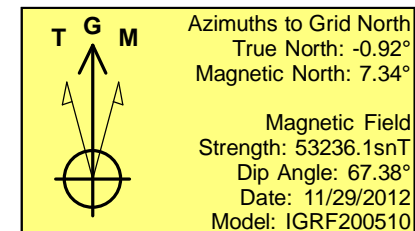
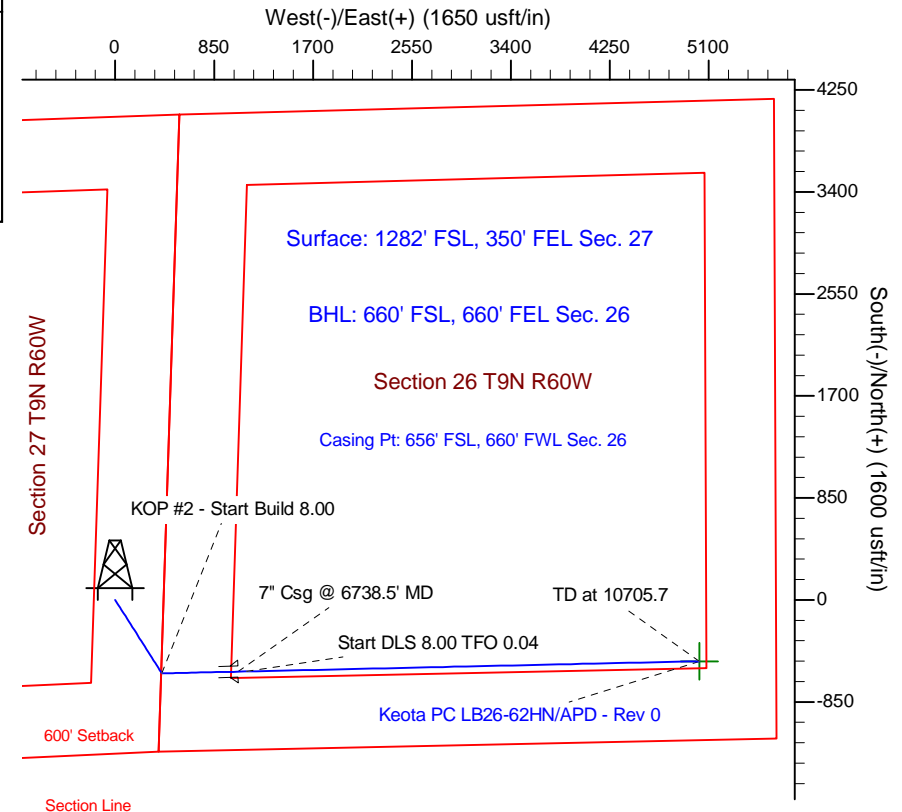
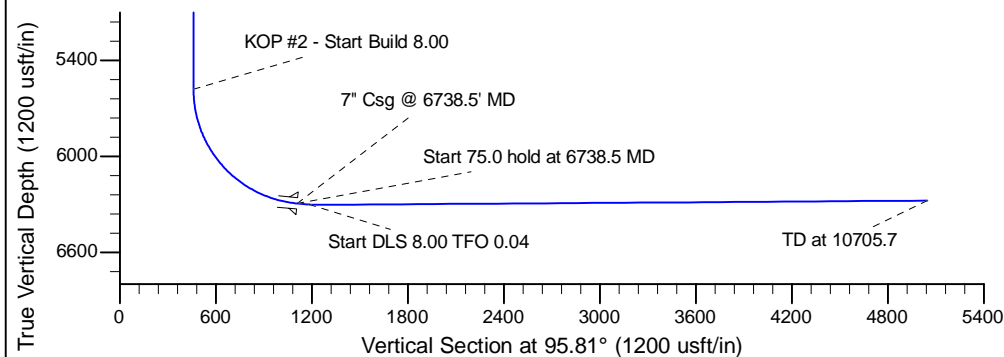
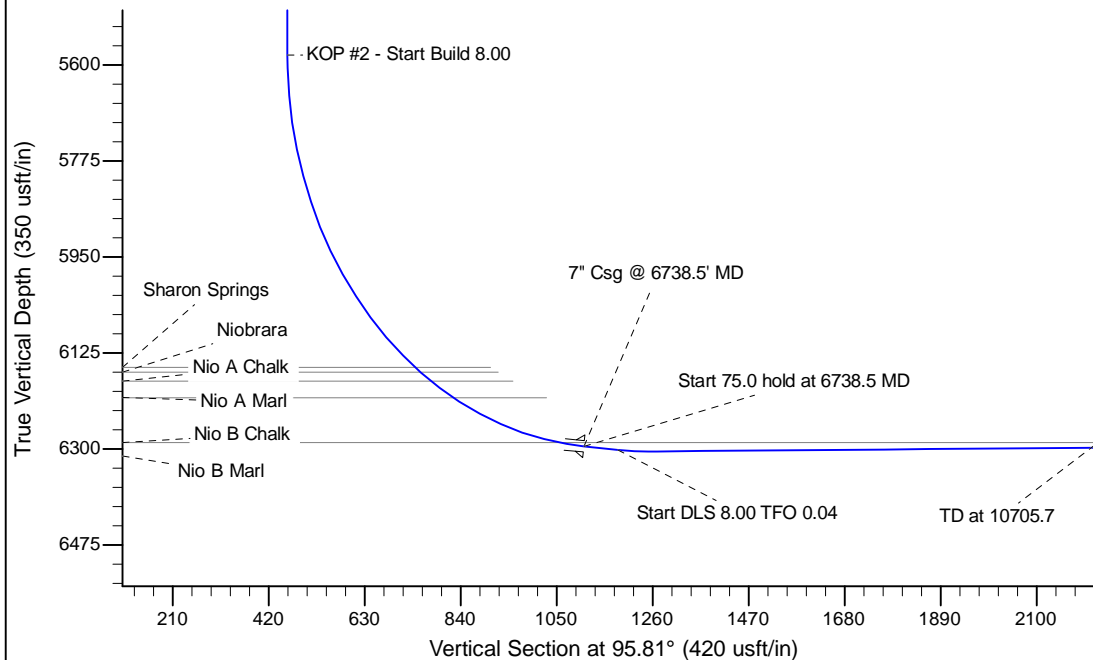
Project: Wattenberg Field  
 Site: LB (27-T09N-R60W) Weld County, CO  
 Well: Keota PC LB26-62HN  
 Wellbore: Original Drilling  
 Design: APD - Rev 0

# Northern Region Drilling

Geodetic System: US State Plane 1983  
 Datum: North American Datum 1983  
 Ellipsoid: GRS 1980  
 Zone: Colorado Northern Zone  
 System Datum: Mean Sea Level

## SECTION DETAILS

Sec	MD	Inc	Azi	TVD	+N/-S	+E/-W	Dleg	TFace	VSect	Target
1	0.0	0.00	0.00	0.0	0.0	0.0	0.00	0.00	0.0	
2	1500.0	0.00	0.00	1500.0	0.0	0.0	0.00	0.00	0.0	
3	2139.9	16.00	146.77	2131.7	-74.2	48.6	2.50	146.77	55.9	
4	4150.5	16.00	146.77	4064.3	-537.8	352.4	0.00	0.00	405.0	
5	4790.4	0.00	0.00	4696.0	-612.0	401.0	2.50	180.00	460.9	
6	5676.0	0.00	0.00	5581.6	-612.0	401.0	0.00	0.00	460.9	
7	6738.5	85.00	88.74	6295.0	-597.6	1054.6	8.00	88.74	1109.7	
8	6813.5	85.00	88.74	6301.6	-596.0	1129.3	0.00	0.00	1183.8	
9	6881.0	90.40	88.74	6304.3	-594.5	1196.7	8.00	0.04	1250.7	
10	10705.7	90.40	88.74	6277.7	-510.6	5020.4	0.00	0.00	5046.3	Keota PC LB26-62HN BHL 660'FSL, 660'FEL



WELL DETAILS: Keota PC LB26-62HN			
Ground Level:	4949.0	Latitude	40.717364
Northing	1507375.98	Easting	3396391.99
Longitude	-104.069986		

Plan: APD - Rev 0 (Keota PC LB26-62HN/Original Drilling)
Created By: Carrie Willers Date: 17:46, November 29 2012

OK to submit with 2A as per Noble Drilling  
 11/29/12 7:08