

Permit as Horizontal Niobrara:

TMD = 10706', TVD = 6278' (Lateral Length of 3967')

13-3/4" hole with 9-5/8" surface casing: 550'

8-3/4" hole with 7" intermediate casing: 6739'

6-1/8" hole with 4-1/2" liner hung off at liner hanger (6589' MD)

Please mark permit as TIGHT HOLE.

PLAT
P.M.

APPROVED

By tylerporter at 8:08 am, 11/30/12

NOTE:
SEE LOCATION DRAWING FOR
EXISTING IMPROVEMENTS WITHIN 400'
OF THE PROPOSED DISTURBANCE.

NOTE:
THE PROPOSED BOTTOM HOLE FOR THIS
WELL IS LOCATED IN THE SE 1/4 SE 1/4
OF SECTION 26, T9N, R60W, 6th P.M. AT
660' FSL 660' FEL. IT BEARS S83°19'47"E
5047.83' FROM THE PROPOSED WELL HEAD.

27

KEOTA PC LB26-62HN
Elev. Ungraded Ground = 4949'

Target Bottom
Hole

THIS IS TO CERTIFY THAT THE ABOVE PLAT WAS PREPARED FROM
FIELD NOTES OF ACTUAL SURVEYS MADE BY ME OR UNDER MY
SUPERVISION AND THAT THE SAME ARE TRUE AND CORRECT TO THE
BEST OF MY KNOWLEDGE AND BELIEF.

REGISTERED LAND SURVEYOR
REGISTRATION NO. 17492
STATE OF COLORADO
09-05-12

NOBLE ENERGY, INC.

Well location, KEOTA PC LB26-62HN (SURFACE
LOCATION), located as shown in the SE 1/4 SE
1/4 of Section 27, T9N, R60W, 6th P.M., Weld
County, Colorado.

BASIS OF ELEVATION

SPOT ELEVATION LOCATED AT THE NORTHEAST CORNER OF
SECTION 2, T9N, R61W, 6th P.M. TAKEN FROM THE GROVER
SOUTH, QUADRANGLE, COLORADO, WELD COUNTY, 7.5 MINUTE
QUAD (TOPOGRAPHIC MAP) PUBLISHED BY THE UNITED
STATES DEPARTMENT OF THE INTERIOR, GEOLOGICAL SURVEY.
SAID ELEVATION IS MARKED AS BEING 5043 FEET.

BASIS OF BEARINGS

BASIS OF BEARINGS IS A G.P.S. OBSERVATION.



SCALE

CERTIFICATE

FEATURE TABLE

| EXISTING FEATURE | DIRECTION | LENGTH |
|------------------|-----------|--------|
| PROPERTY LINE | EAST | 350' |

PDOP = 2.4

NAD 83 (SURFACE LOCATION)

LATITUDE = 40°43'02.51" (40.717364)
LONGITUDE = 104°04'11.95" (104.069986)

UINTAH ENGINEERING & LAND SURVEYING

85 SOUTH 200 EAST - VERNAL, UTAH 84078

(435) 789-1017

| | | |
|------------------------------------|----------------------------|-------------------------|
| SCALE 1" = 1000' | DATE SURVEYED: 07-31-12 | DATE DRAWN: 09-03-12 |
| PARTY DARREN SHANKS K.H. S.R.L. | REFERENCES G.L.O. PLAT | |
| WEATHER WARM | FILE NOBLE ENERGY, INC. | |

LEGEND:

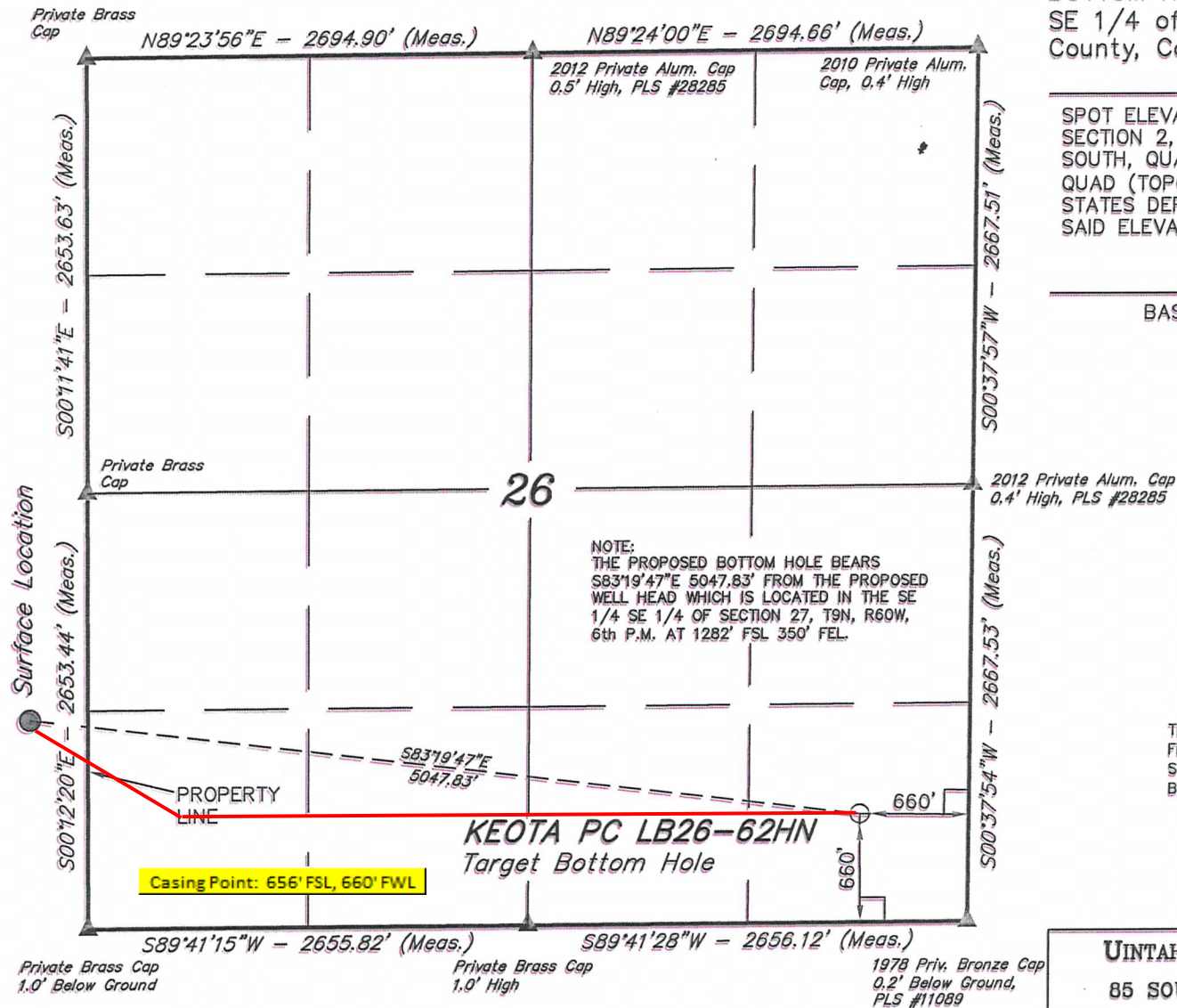
└ = 90° SYMBOL

● = PROPOSED WELL HEAD.

▲ = SECTION CORNERS LOCATED.

SHEET 1 OF 2

WELL LOCATION PLAT T9N, R60W, 6th P.M.



LEGEND:

- └─┘ = 90° SYMBOL
- = PROPOSED WELL HEAD.
- ▲ = SECTION CORNERS LOCATED.

SHEET 2 OF 2

| FEATURE TABLE | | |
|------------------|-----------|--------|
| EXISTING FEATURE | DIRECTION | LENGTH |
| PROPERTY LINE | EAST | 350' |

NAD 83 (TARGET BOTTOM HOLE)

LATITUDE = 40°42'56.66" (40.715739)
LONGITUDE = 104°03'06.87" (104.051908)

NOBLE ENERGY, INC.

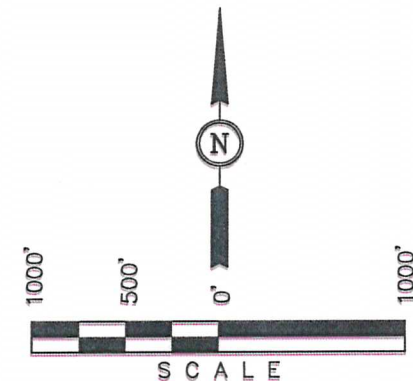
Well location, KEOTA PC LB26-62HN (TARGET BOTTOM HOLE), located as shown in the SE 1/4 SE 1/4 of Section 26, T9N, R60W, 6th P.M., Weld County, Colorado.

BASIS OF ELEVATION

SPOT ELEVATION LOCATED AT THE NORTHEAST CORNER OF SECTION 2, T9N, R61W, 6th P.M. TAKEN FROM THE GROVER SOUTH, QUADRANGLE, COLORADO, WELD COUNTY, 7.5 MINUTE QUAD (TOPOGRAPHIC MAP) PUBLISHED BY THE UNITED STATES DEPARTMENT OF THE INTERIOR, GEOLOGICAL SURVEY. SAID ELEVATION IS MARKED AS BEING 5043 FEET.

BASIS OF BEARINGS

BASIS OF BEARINGS IS A G.P.S. OBSERVATION.



CERTIFICATE

THIS IS TO CERTIFY THAT THE ABOVE PLAT WAS PREPARED FROM FIELD NOTES OF ACTUAL SURVEYS MADE BY ME OR UNDER MY SUPERVISION AND THAT THE SAME ARE TRUE AND CORRECT TO THE BEST OF MY KNOWLEDGE AND BELIEF.

REGISTERED LAND SURVEYOR
REGISTRATION NO. 17492
STATE OF COLORADO
09-05-12

UINTAH ENGINEERING & LAND SURVEYING

85 SOUTH 200 EAST - VERNAL, UTAH 84078

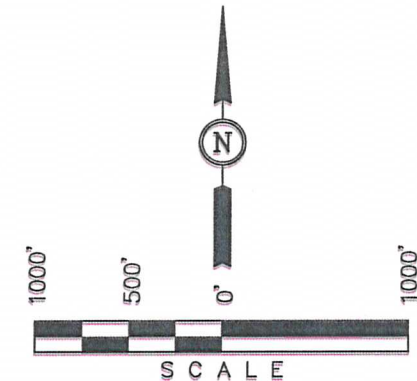
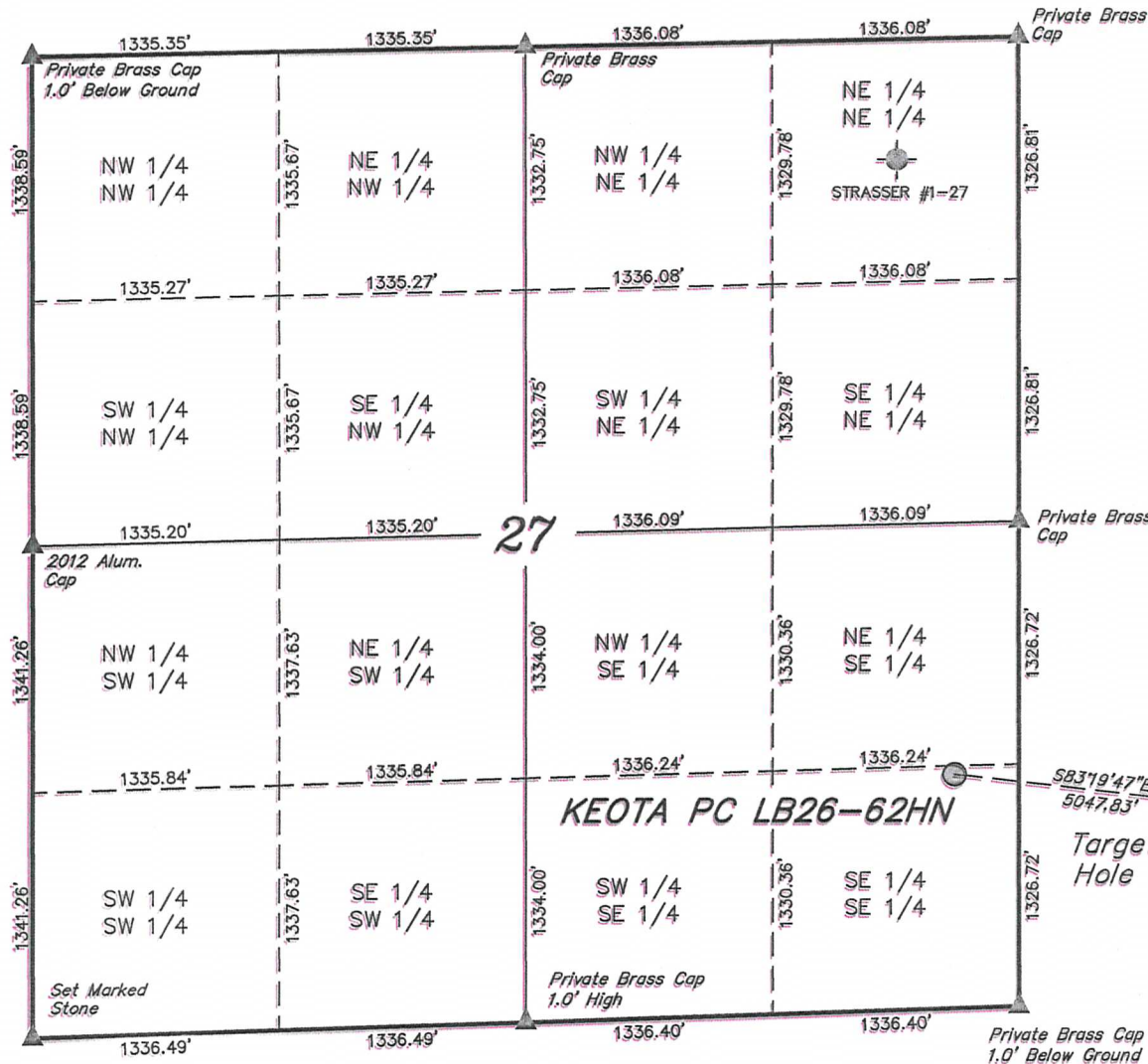
(435) 789-1017

| | | |
|------------------------------------|----------------------------|-------------------------|
| SCALE 1" = 1000' | DATE SURVEYED: 07-31-12 | DATE DRAWN: 09-03-12 |
| PARTY DARREN SHANKS K.H. S.R.L. | REFERENCES G.L.O. PLAT | |
| WEATHER WARM | FILE NOBLE ENERGY, INC. | |

SITE SKETCH T9N, R60W, 6th P.M.

NOBLE ENERGY, INC.

Well location, KEOTA PC LB26-62HN (SURFACE LOCATION), located as shown in the SE 1/4 SE 1/4 of Section 27, T9N, R60W, 6th P.M., Weld County, Colorado.



NOTE:
THE PROPOSED BOTTOM HOLE FOR THIS WELL IS LOCATED IN THE SE 1/4 SE 1/4 OF SECTION 26, T9N, R60W, 6th P.M. AT 660' FSL 660' FEL IT BEARS S83°19'47"E 5047.83' FROM THE PROPOSED WELL HEAD.

LEGEND:

- └─ = 90° SYMBOL
- = PROPOSED WELL HEAD.
- ▲ = SECTION CORNERS LOCATED.
- ⊙ = ABANDONED WELLS

SHEET 1 OF 2

| | WELL NAME | QTR-QTR | FOOTAGES | LATITUDE | LONGITUDE | ELEVATION | PDOP |
|---|----------------|---------------|----------------------|------------|-------------|-----------|------|
| 1 | STRASSER #1-27 | NE 1/4 NE 1/4 | FROM COCGG DATA BASE | 40.726604N | 104.071182W | 4984' | N/A |

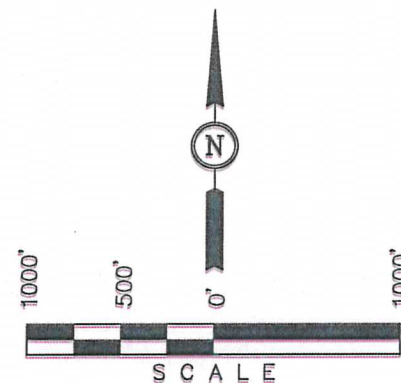
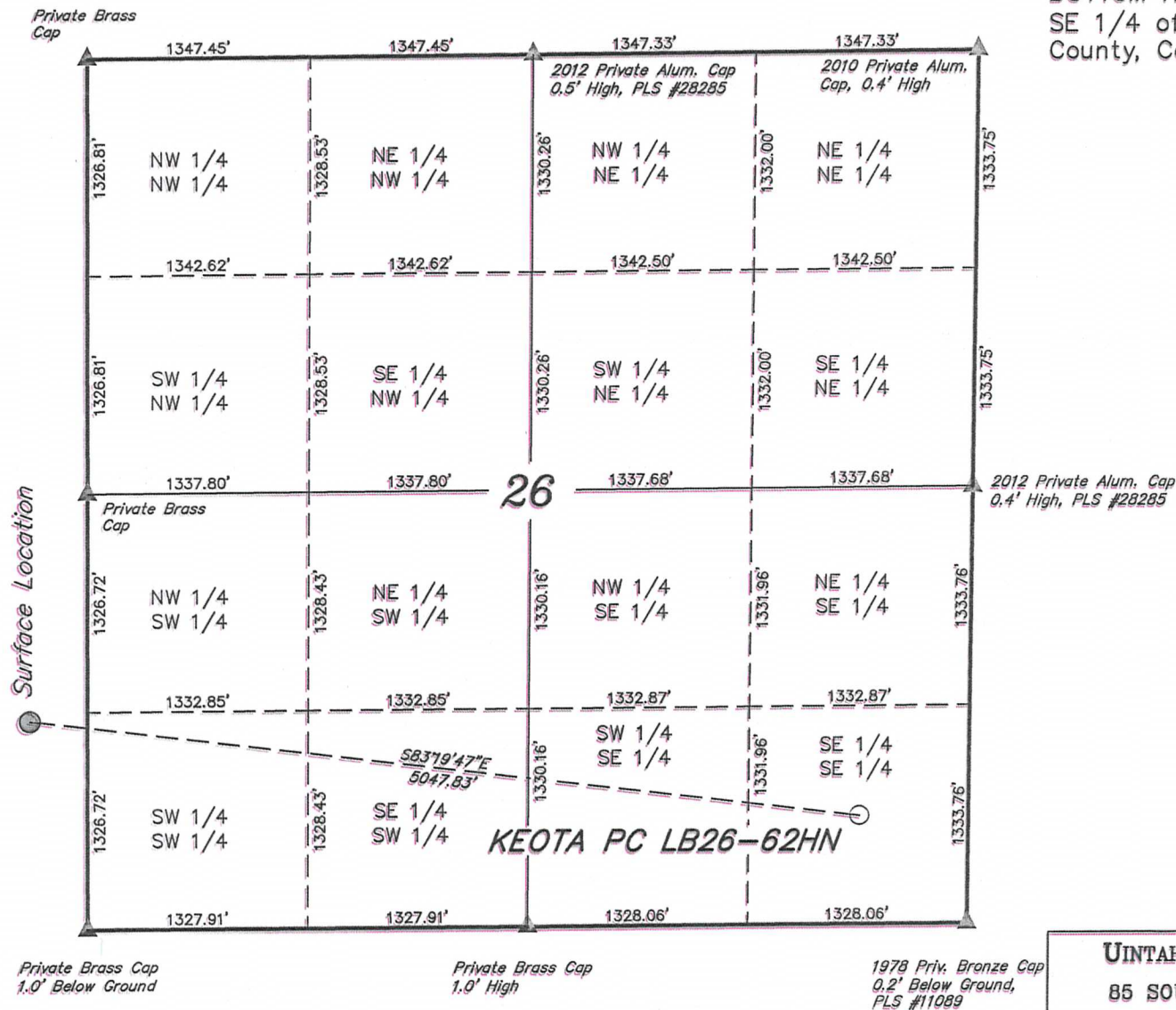
UINTAH ENGINEERING & LAND SURVEYING
85 SOUTH 200 EAST - VERNAL, UTAH 84078
(435) 789-1017

| | | |
|------------------------------------|----------------------------|-------------------------|
| SCALE 1" = 1000' | DATE SURVEYED: 07-31-12 | DATE DRAWN: 09-03-12 |
| PARTY DARREN SHANKS K.H. S.R.L. | REFERENCES G.L.O. PLAT | |
| WEATHER WARM | FILE NOBLE ENERGY, INC. | |

SITE SKETCH T9N, R60W, 6th P.M.

NOBLE ENERGY, INC.

Well location, KEOTA PC LB26-62HN (TARGET BOTTOM HOLE), located as shown in the SE 1/4 SE 1/4 of Section 26, T9N, R60W, 6th P.M., Weld County, Colorado.



LEGEND:

- └ = 90° SYMBOL
- = PROPOSED WELL HEAD.
- ▲ = SECTION CORNERS LOCATED.

SHEET 2 OF 2

NO WELLS WITHIN SECTION

UINTAH ENGINEERING & LAND SURVEYING
85 SOUTH 200 EAST - VERNAL, UTAH 84078
(435) 789-1017

| | | |
|------------------------------------|----------------------------|-------------------------|
| SCALE 1" = 1000' | DATE SURVEYED: 07-31-12 | DATE DRAWN: 09-03-12 |
| PARTY DARREN SHANKS K.H. S.R.L. | REFERENCES G.L.O. PLAT | |
| WEATHER WARM | FILE NOBLE ENERGY, INC. | |