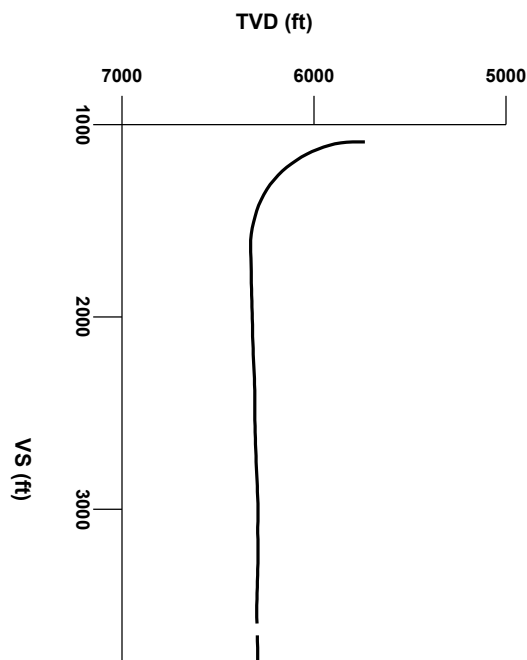




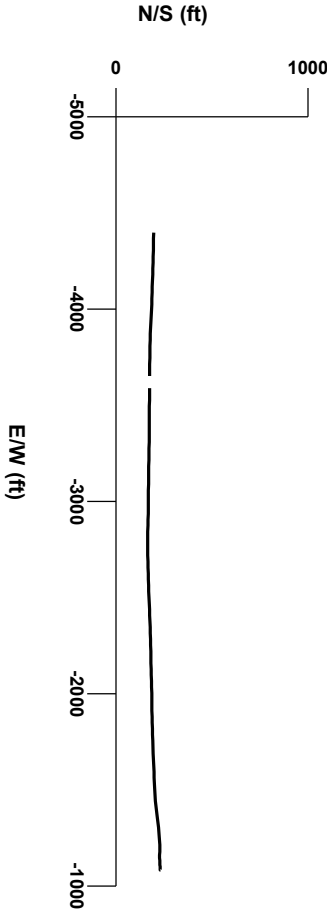
LOG created using L PLOT VH Version 3.0, July 24, 2012, Copyright (C) 1999-2009 Pason Systems Corp.

OPERATOR: BONANZA CREEK INC
WELL: NORTH PLATTE X-D-35HZ
LOCATION: SECTION 36, T5N, R63W
COUNTY: WELD
STATE: COLORADO
SPOT: 1,090' FSL X 1,093' FWL
ELEVATION: 4,540' GL 4,552' KB
FIELD: WATTENBERG
SPUD DATE: JULY 15, 2012
TD DATE:
DATES LOGGED: JULY 20 - JULY
DEPTHS LOGGED: 5,881' -
LOGGERS: JOEY LUCE, WEDGE HOWLAND
DRILLING FLUID: WATER POLY MUD - LSND
DRILLING RIG: ENSIGN 12
API: 05-123-35443
LOG TYPE: HORIZONTAL
SCALE: 1:240 (5 inches per 100 feet)
REMARKS: CONTINUED FROM VERTICAL LOG FOR NORTH PLATTE X-D-35HZ

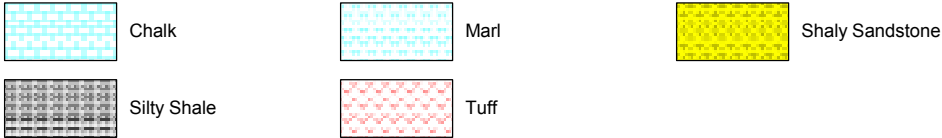


Survey Elevation

Survey Plan



LITHOLOGIES



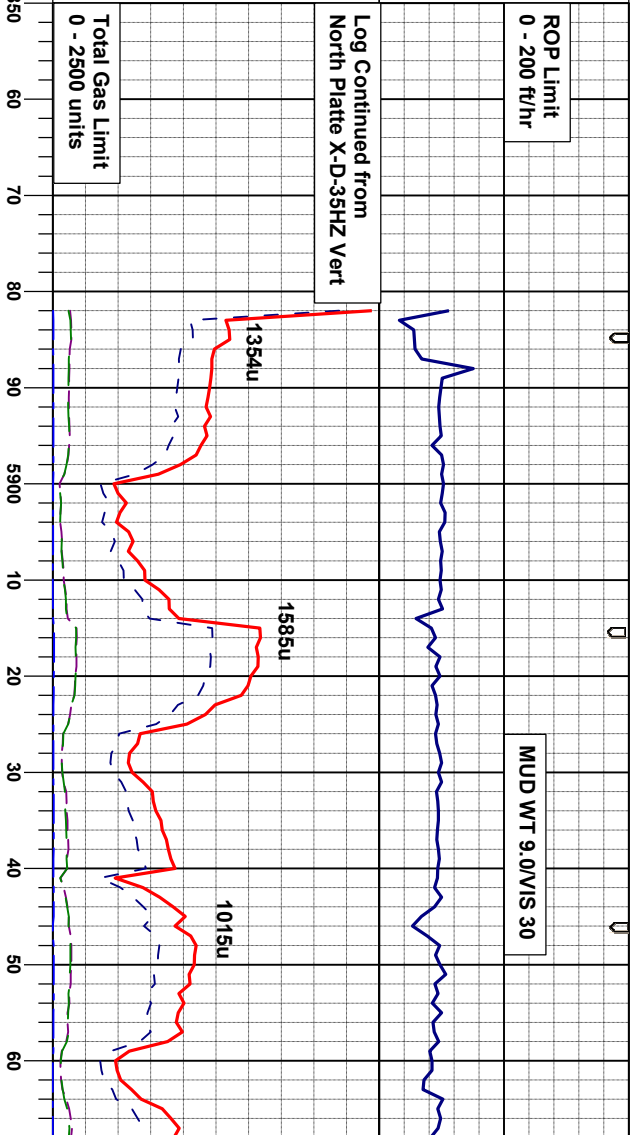
ENGINEERING SYMBOLS



GAS		
0	UNITS	2500
C1		
0	PPM	250000
C2		
0	PPM	250000
C3		
0	PPM	250000
C4		
0	PPM	250000

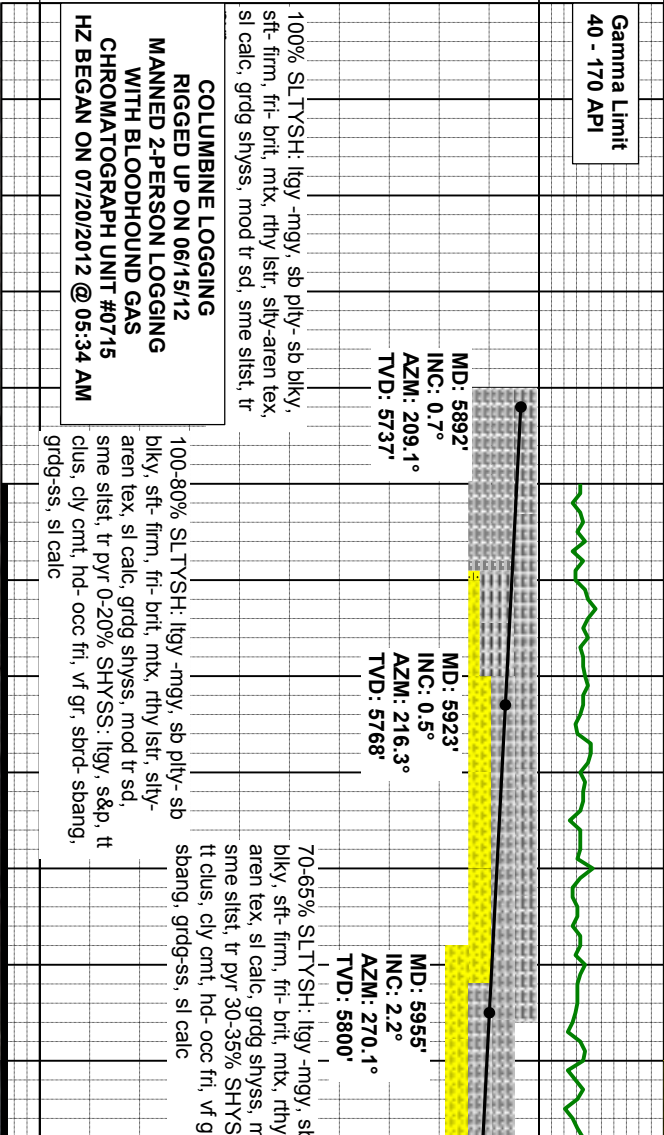
ROP	
0	MIN/FT
200	

DEPTH (FEET)



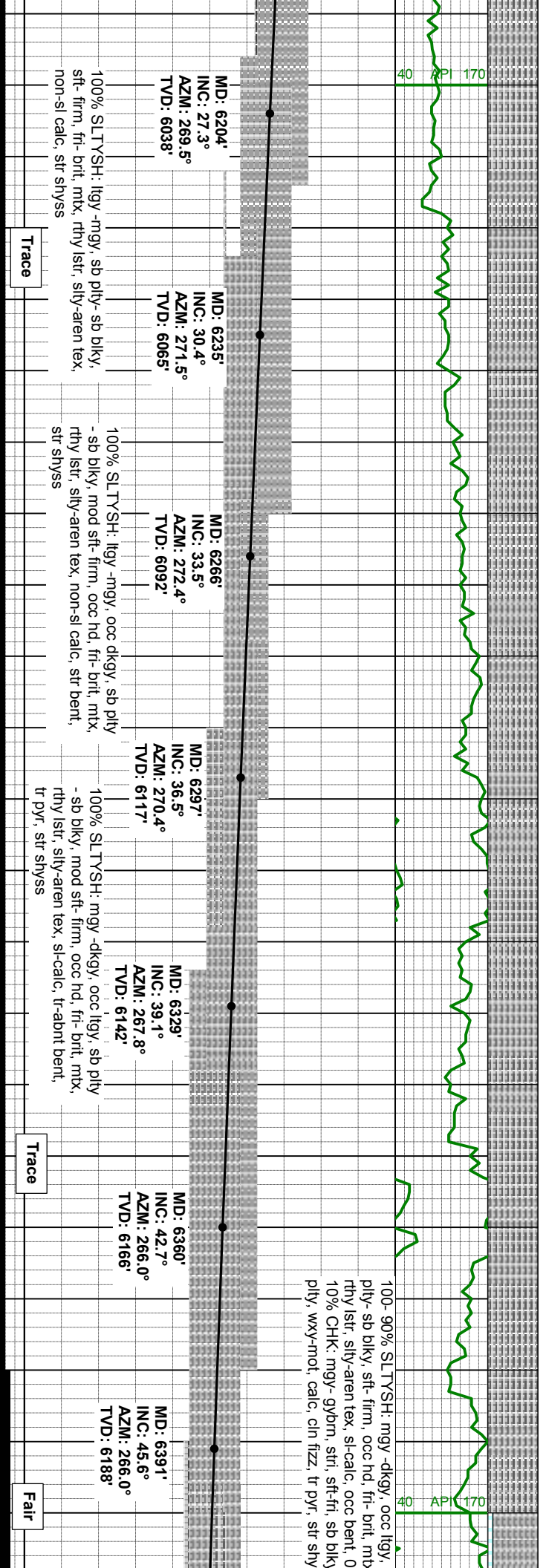
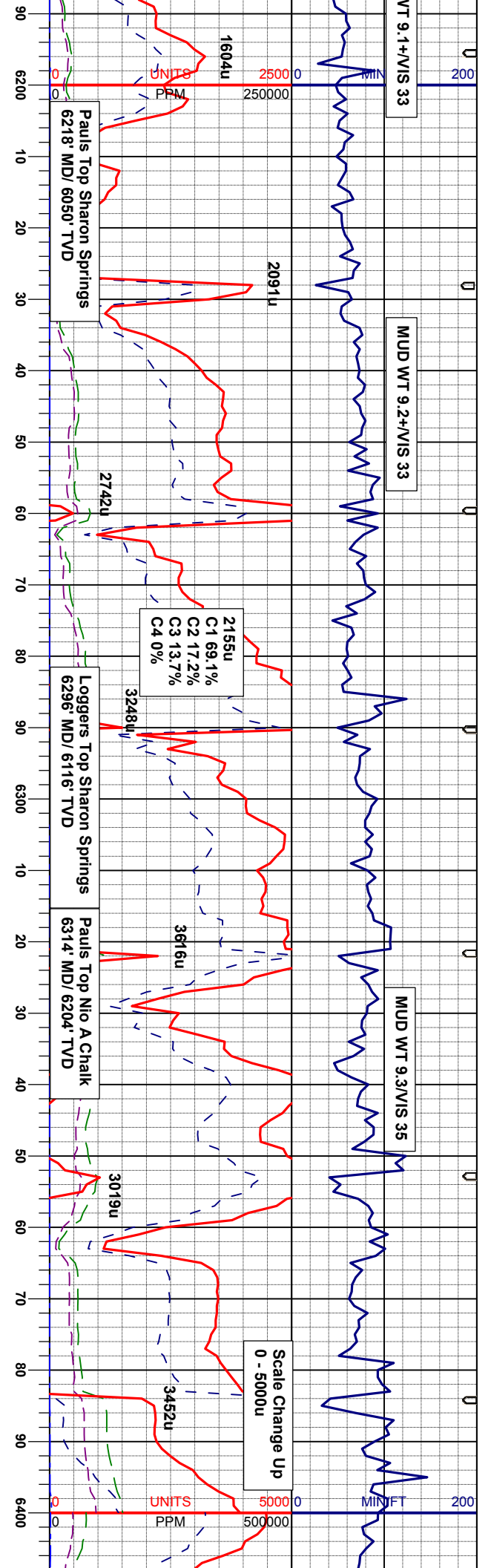
CUTTINGS LITHOLOGY

TVD	
6700	ft
5700	
GAMMA RAY	
40	API
170	



SAMPLE PHOTOS



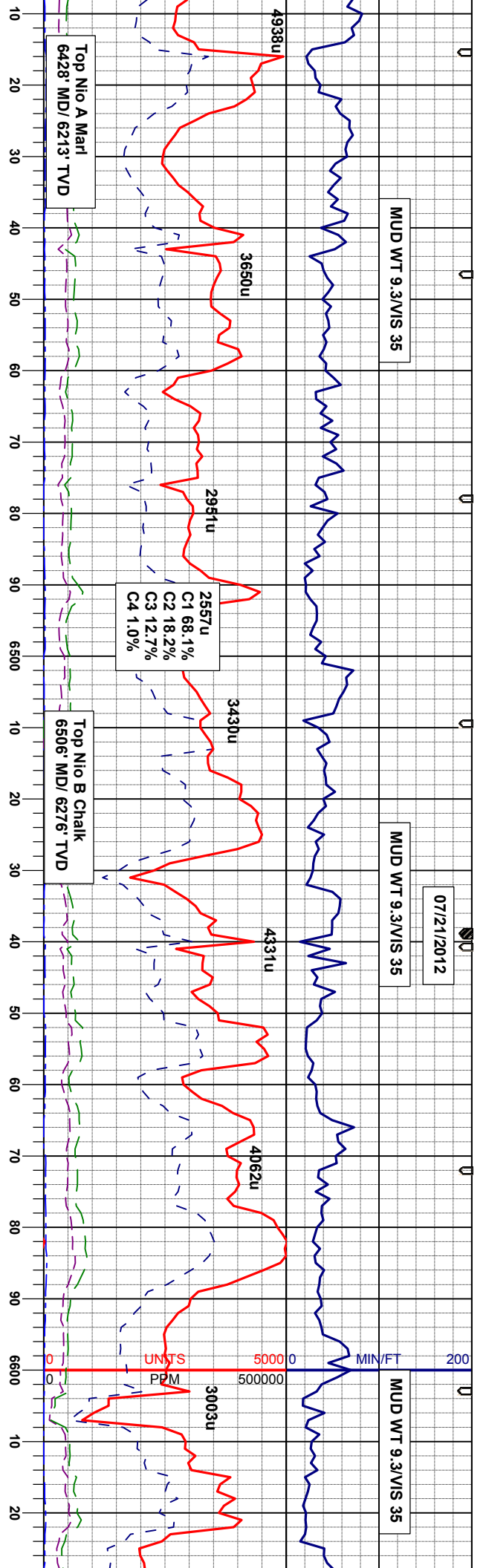


07/21/2012

MUD WT 9.3/VIS 35

MUD WT 9.3/VIS 35

MUD WT 9.3/VIS 35



Top Nio A Marl
6428' MD/ 6213' TVD

Top Nio B Chalk
6506' MD/ 6276' TVD

2557u
C1 66.1%
C2 18.2%
C3 12.7%
C4 1.0%

40-20% SLTSH: mgy-dkgy, occ llyg, sb
ply-sb bly, sft-firm, occ hd, frt-brt, mtb,
rthy lstr, sily-aren tex, sl-calc, occ bent, 40-
50% CHK: mgy-gybm, strf, sft-frt, sb bly-
ply, wxy-mot, calc, cin fzz, 20-30% MRL:
mgy, dkgybm, sl hd, brt-occ frt, sbply-
spbly, rthy lstr, sily-arg tex, org/calc mtb,
tr pyr

65-35% CHK: mgy-gybm, strf, sft-frt, sb
bly-ply, wxy-mot, calc, cin fzz, 35-65%
MRL: mgy, dkgybm, sl hd, brt-occ frt,
sbply-spbly, rthy lstr, sily-arg tex,
org/calc mtb, tr pyr

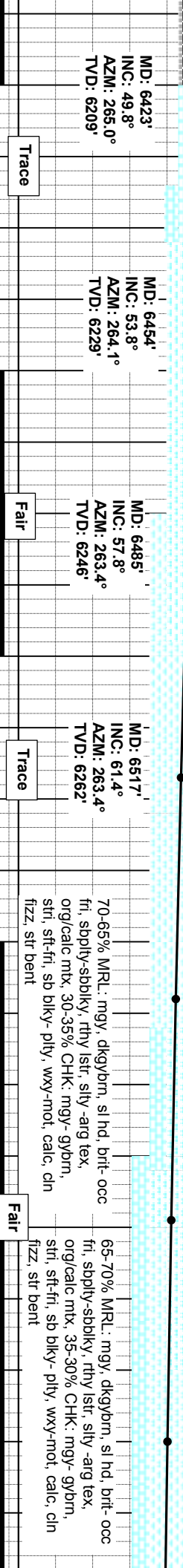
65-80% MRL: mgy, dkgybm, sl hd, brt-occ
frt, sbply-spbly, rthy lstr, sily-arg tex,
org/calc mtb, 35-20% CHK: mgy-gybm,
strf, sft-frt, sb bly-ply, wxy-mot, calc, cin
fzz, pyr, str bent

MD: 6548'
INC: 64.7"
AZM: 262.7°
TVD: 6276'

MD: 6579'
INC: 68.2"
AZM: 263.4°
TVD: 6289'

MD: 6610'
INC: 71.8°
AZM: 264.8°
TVD: 6299'

60-70% N
frt, sbply
org/calc n
llyg, mgy
wxy-mot

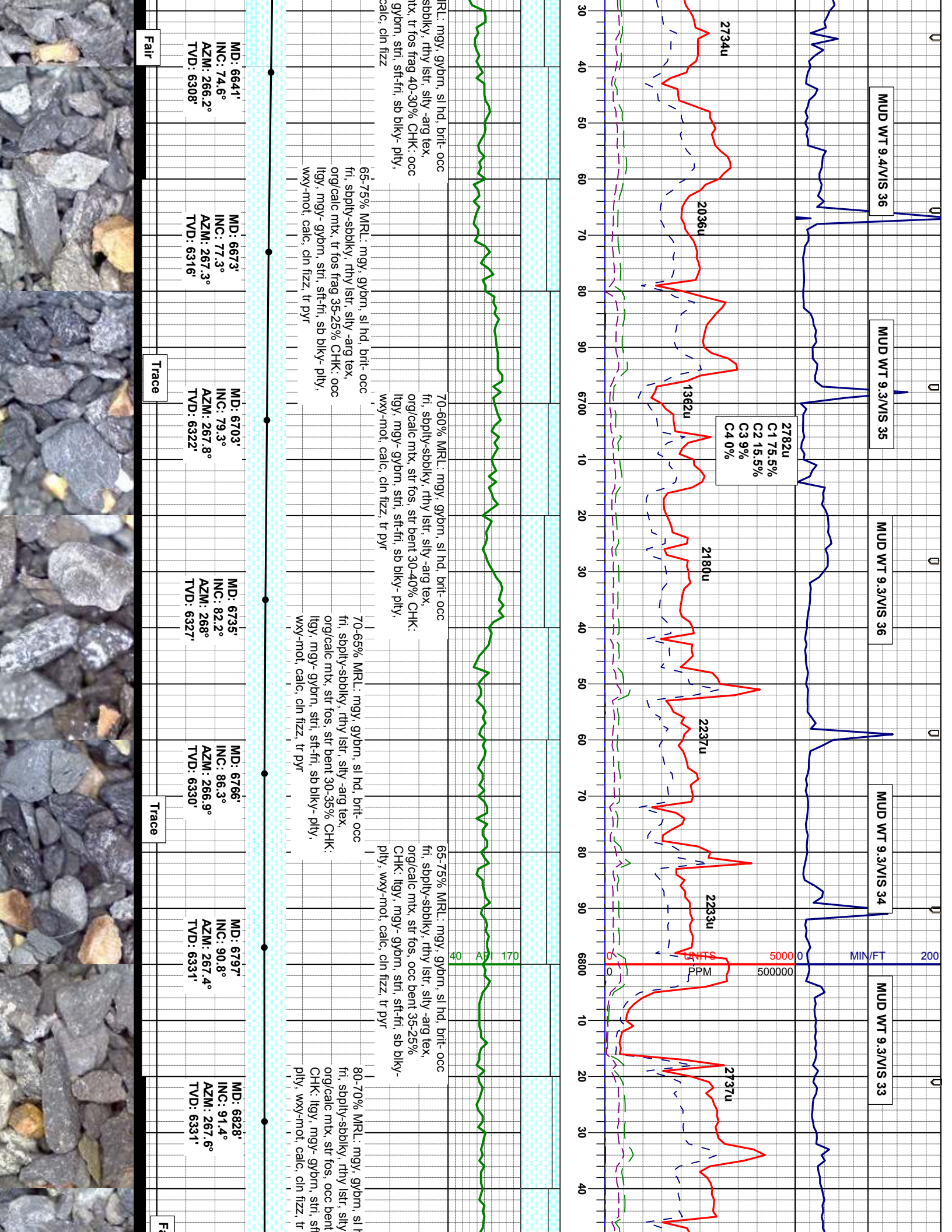


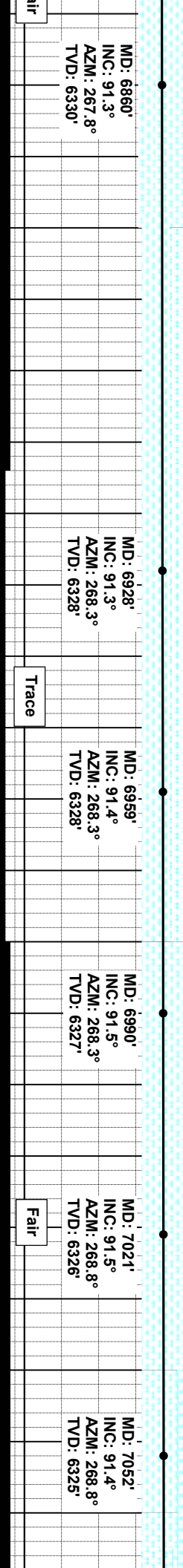
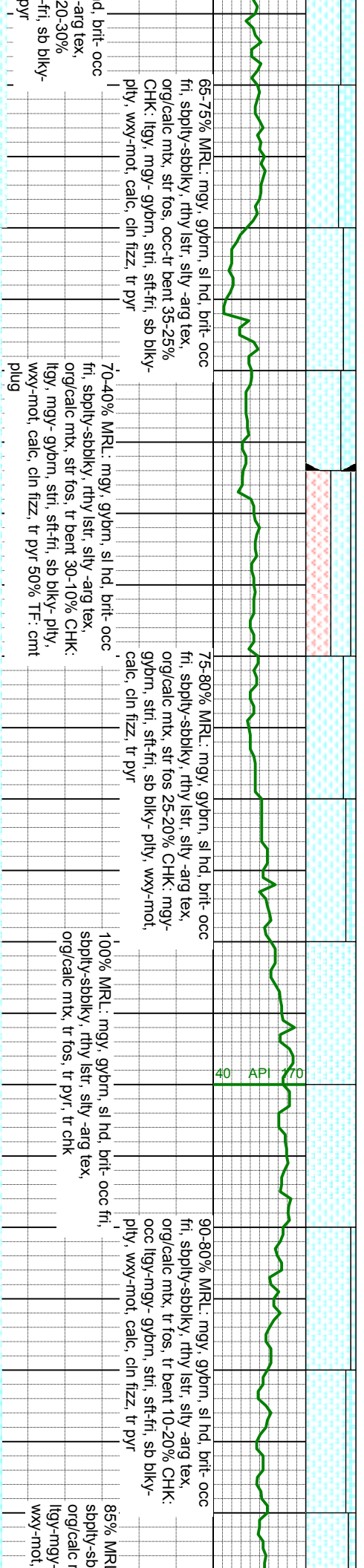
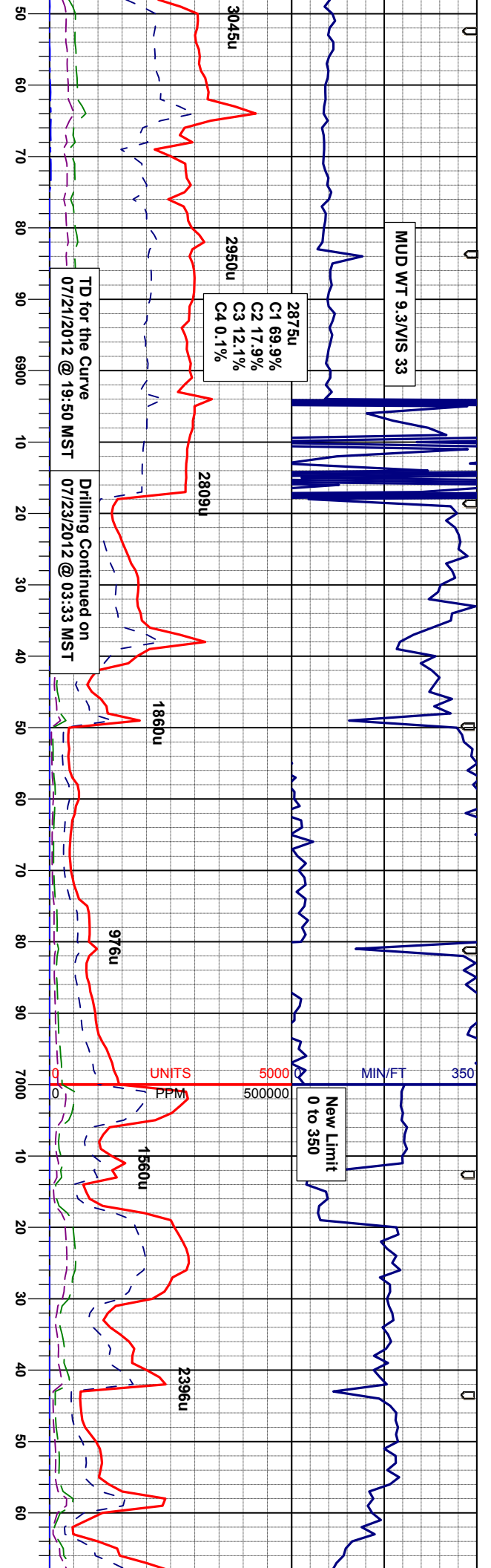
Trace

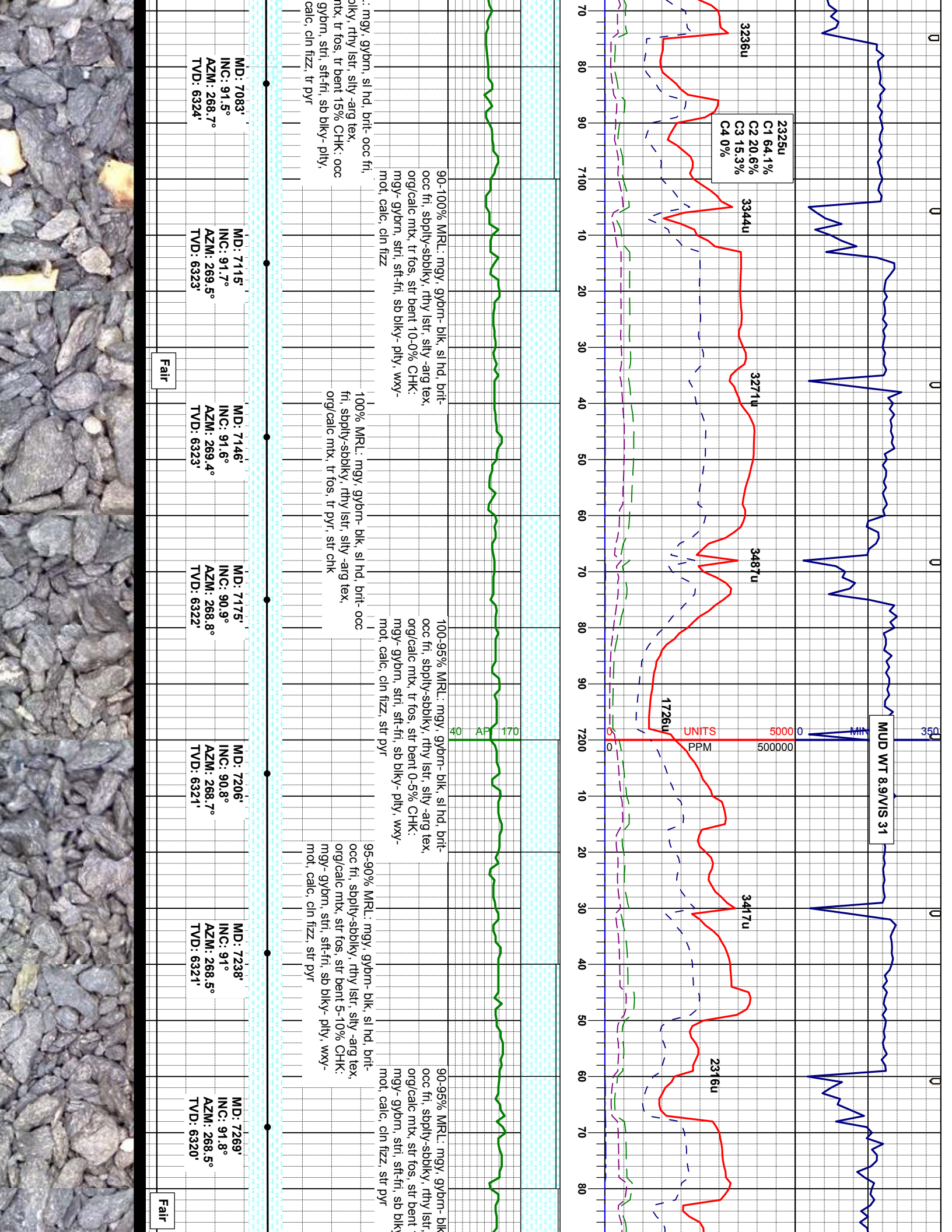
Fair

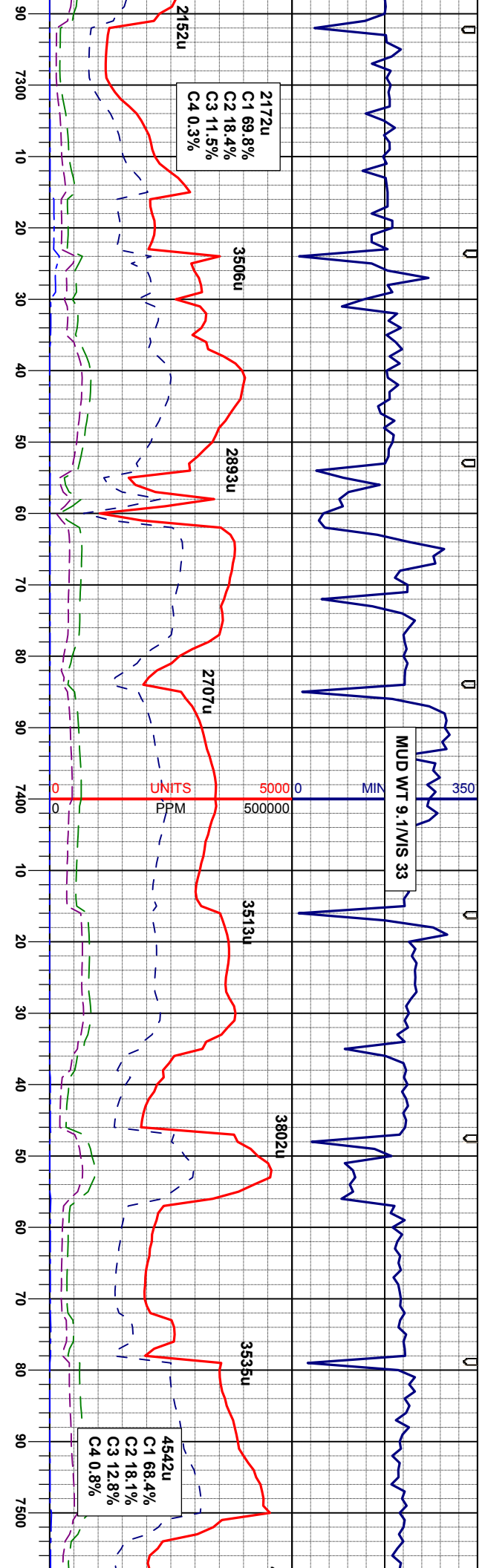
Trace

Fair



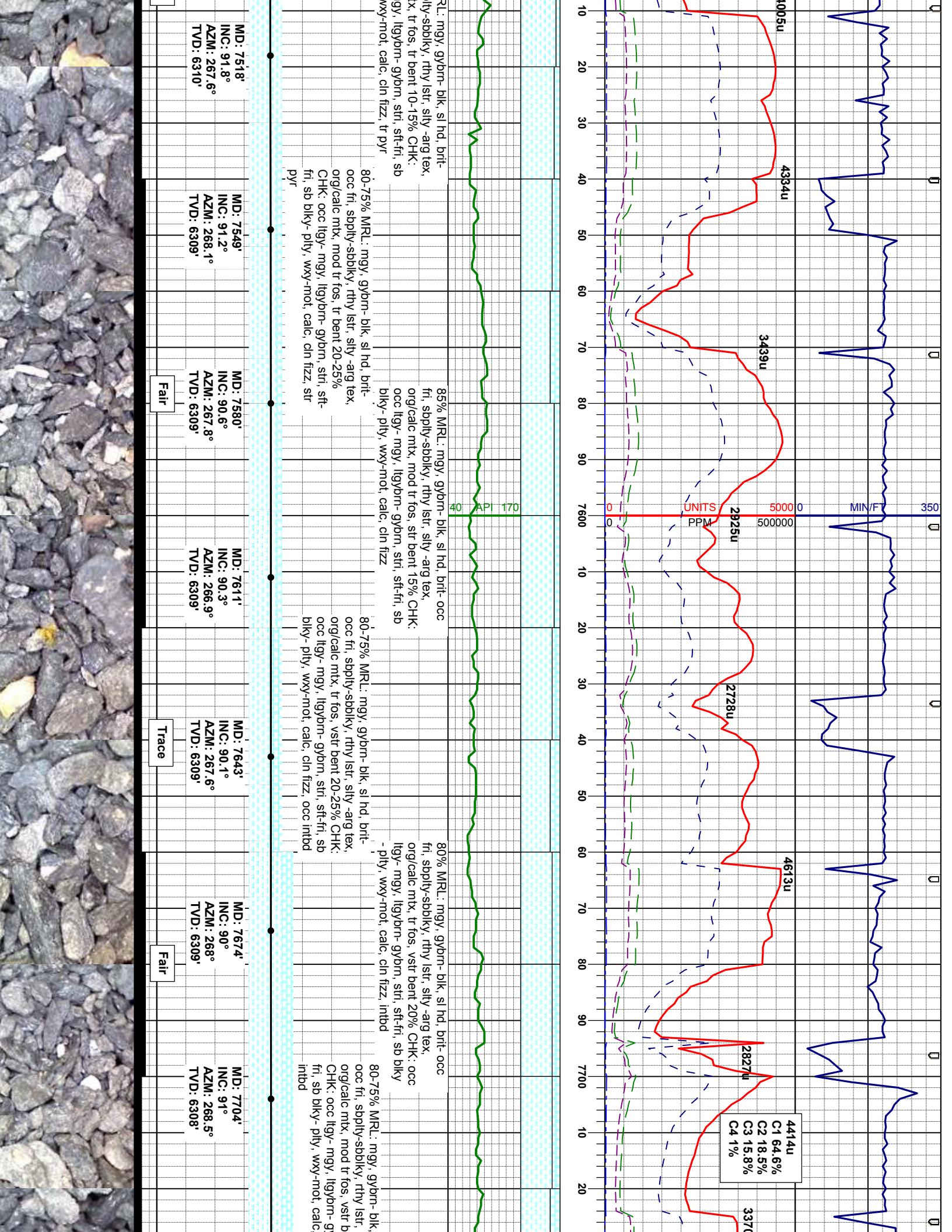


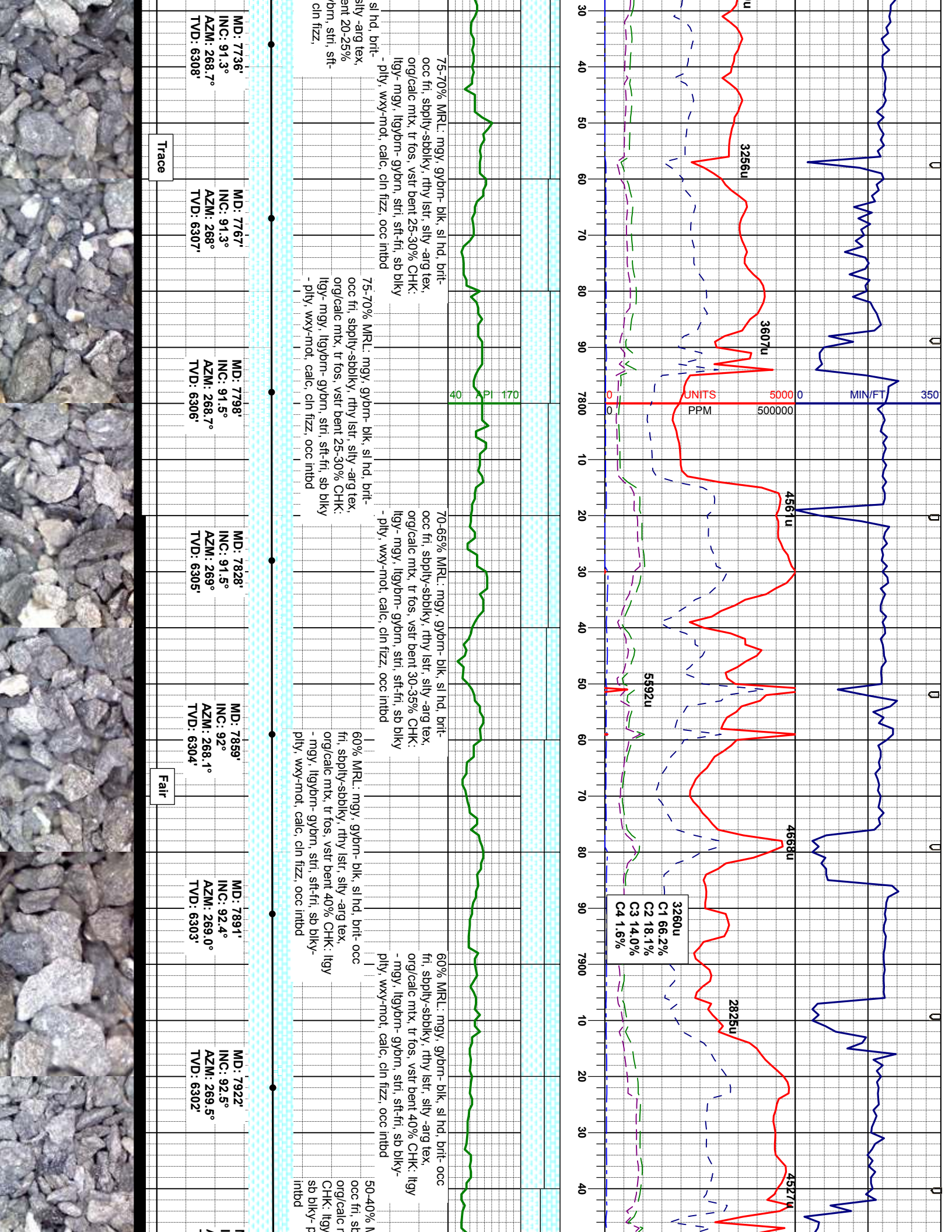


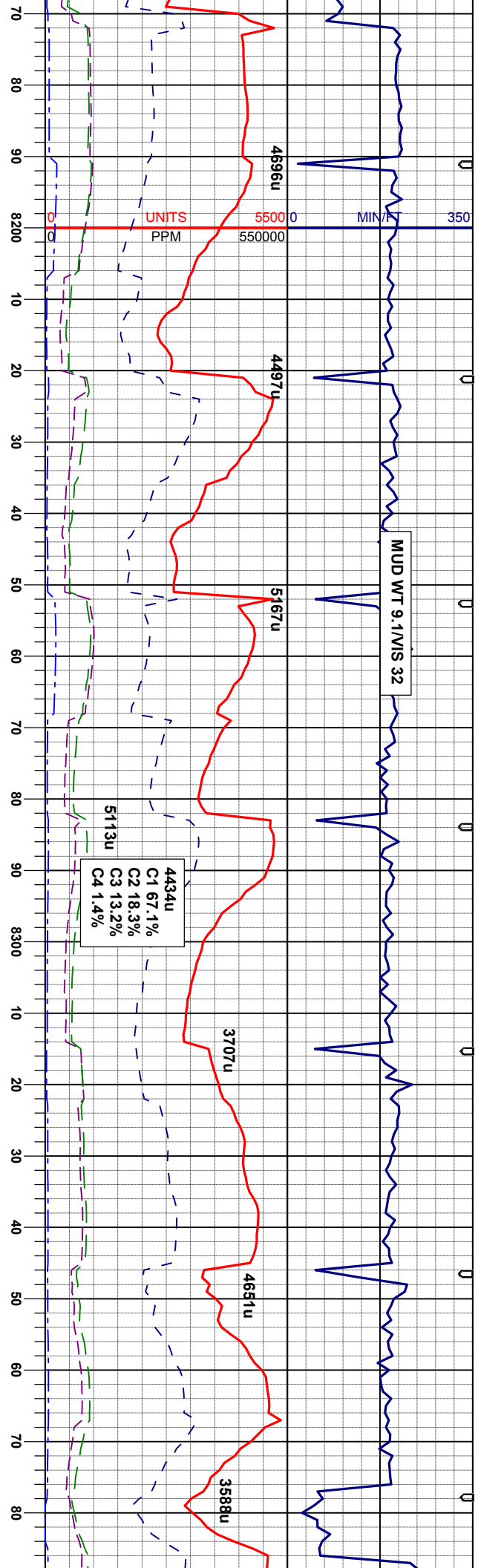


sl hd, brit- sily -arg tex, 0-5% CHK: - pily, wxy-		90% MRL: mgy, gybrn- blk, sl hd, brit- occ fri, sbply-sbblky, rthy istr, sily -arg tex, org/calc mtx, mod tr fos 10% CHK: sme lly, mgy- gybrn, stri, stf-fri, sb blk- pily, wxy-mot, calc, cin fizz, str pyr		85% MRL: mgy, gybrn- blk, sl hd, brit- occ fri, sbply-sbblky, rthy istr, sily -arg tex, org/calc mtx, mod tr fos 15% CHK: sme lly, mgy- gybrn, stri, stf-fri, sb blk- pily, wxy-mot, calc, cin fizz, str pyr		90-95% MRL: mgy, gybrn- blk, sl hd, brit- occ fri, sbply-sbblky, rthy istr, sily -arg tex, org/calc mtx, tr fos, tr bent 10-5% CHK: mgy- gybrn, stri, stf-fri, sb blk- pily, wxy- mot, calc, cin fizz, tr pyr		90% MRL: mgy, gybrn- blk, sl hd, brit- occ fri, sbply-sbblky, rthy istr, sily -arg tex, org/calc mtx, tr fos, tr bent 10% CHK: mgy- gybrn, stri, stf-fri, sb blk- pily, wxy-mot, calc, cin fizz, tr pyr		90-85% MRL: mgy, gybrn- blk, sl hd, brit- occ fri, sbply-sbblky, rthy istr, sily -arg tex, org/calc mtx, mod tr fos 10% CHK: mgy- gybrn, stri, stf-fri, sb blk- pily, wxy-mot, calc, cin fizz, tr pyr	
MD: 7299' INC: 92.1° AZM: 268.5° TVD: 6319'	MD: 7330' INC: 92.2° AZM: 268.3° TVD: 6318'	MD: 7362' INC: 92.4° AZM: 269.2° TVD: 6317'	MD: 7393' INC: 92.9° AZM: 269.2° TVD: 6315'	MD: 7425' INC: 93° AZM: 269.2° TVD: 6314'	MD: 7456' INC: 92.1° AZM: 268.8° TVD: 6312'	MD: 7487' INC: 91.8° AZM: 268.1° TVD: 6311'					
Trace				Trace							









75-70% CHK: llyg- mgy, llygbrn- gybrn, stri, sft- fti, sb blyk- ply, wxy- mot, calc, cin fzz, occ intbd, 25-30% MRL: mgy, gybrn- blk, sl hd, brt- occ fti, sbply- sbply, rthy lstr, sily - arg tex, orgcalc mtx, vstr fos, abnt- tr bent

75-65% CHK: llyg- mgy, llygbrn- gybrn, stri, sft- fti, sb blyk- ply, wxy- mot, calc, cin fzz, occ intbd, 25-35% MRL: mgy, gybrn- blk, sl hd, brt- occ fti, sbply- sbply, rthy lstr, sily - arg tex, orgcalc mtx, vstr fos, tr bent

65% CHK: llyg- mgy, llygbrn- gybrn, stri, sft- fti, sb blyk- ply, wxy- mot, calc, cin fzz, occ intbd, 35% MRL: mgy, gybrn- blk, sl hd, brt- occ fti, sbply- sbply, rthy lstr, sily - arg tex, orgcalc mtx, vstr fos, occ bent

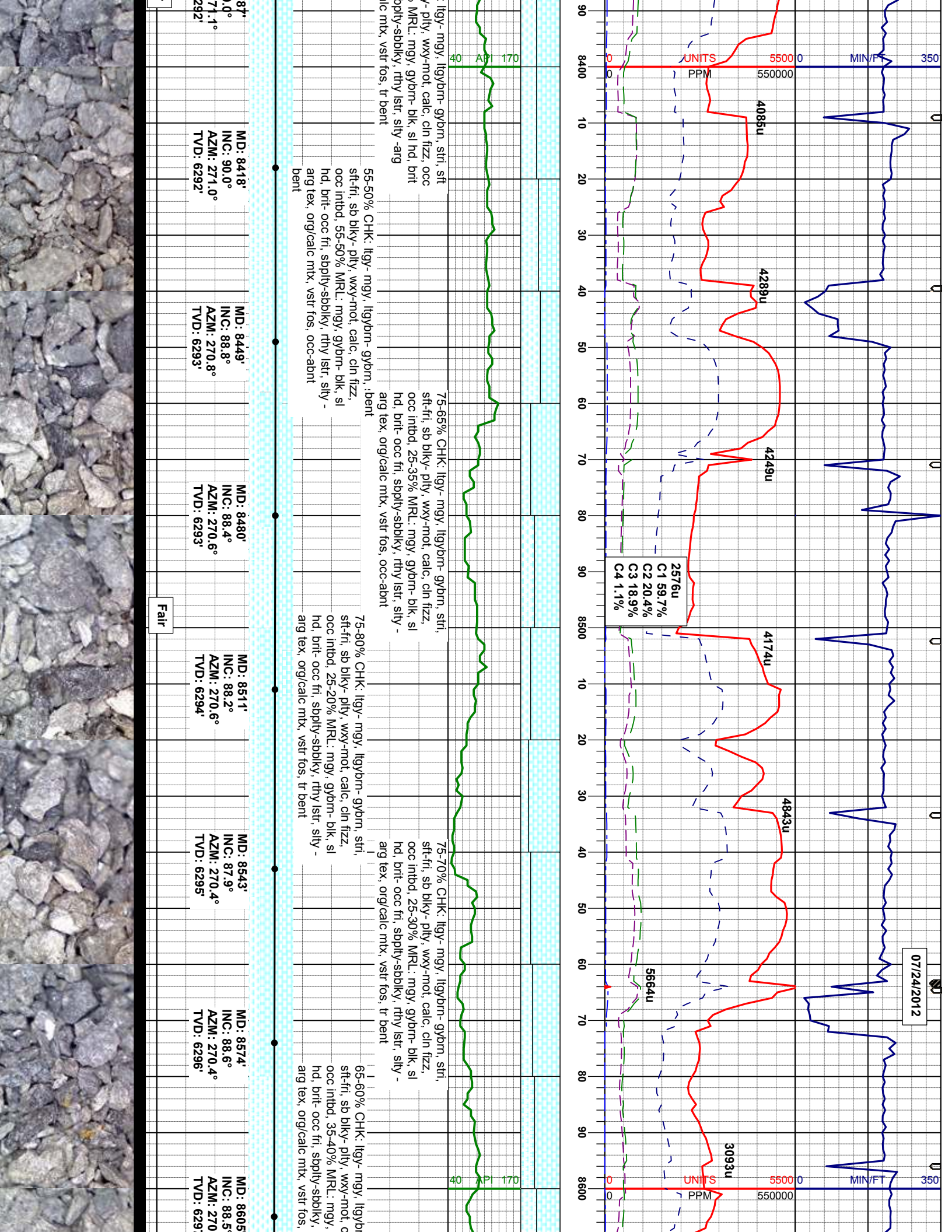
60% CHK: llyg- mgy, llygbrn- gybrn, stri, sft- fti, sb blyk- ply, wxy- mot, calc, cin fzz, occ intbd, 40% MRL: mgy, gybrn- blk, sl hd, brt- occ fti, sbply- sbply, rthy lstr, sily - arg tex, orgcalc mtx, vstr fos, occ bent

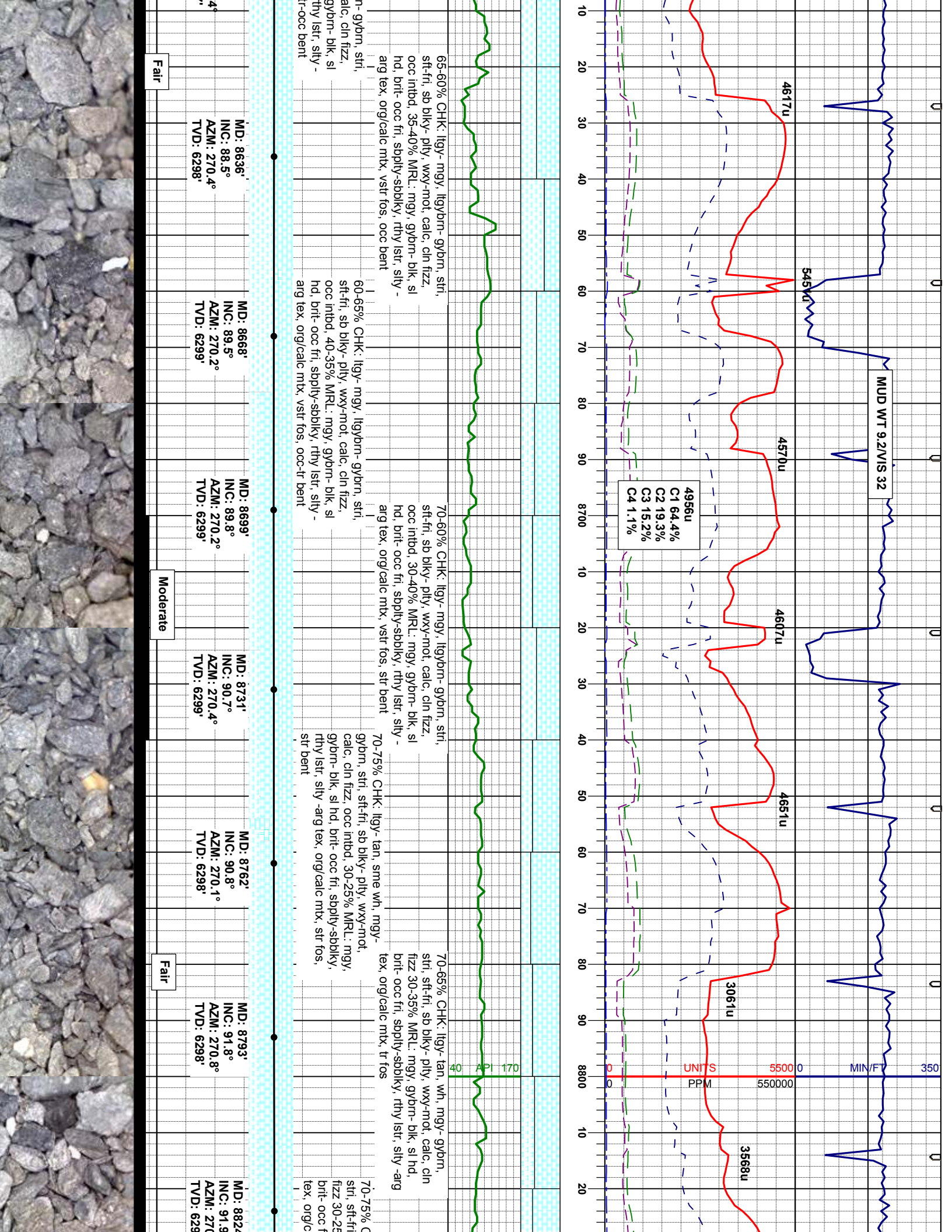
50-60% CHK: llyg- mgy, llygbrn- gybrn, stri, sft- fti, sb blyk- ply, wxy- mot, calc, cin fzz, occ intbd, 50-40% MRL: mgy, gybrn- blk, sl hd, brt- occ fti, sbply- sbply, rthy lstr, sily - arg tex, orgcalc mtx, vstr fos, tr bent

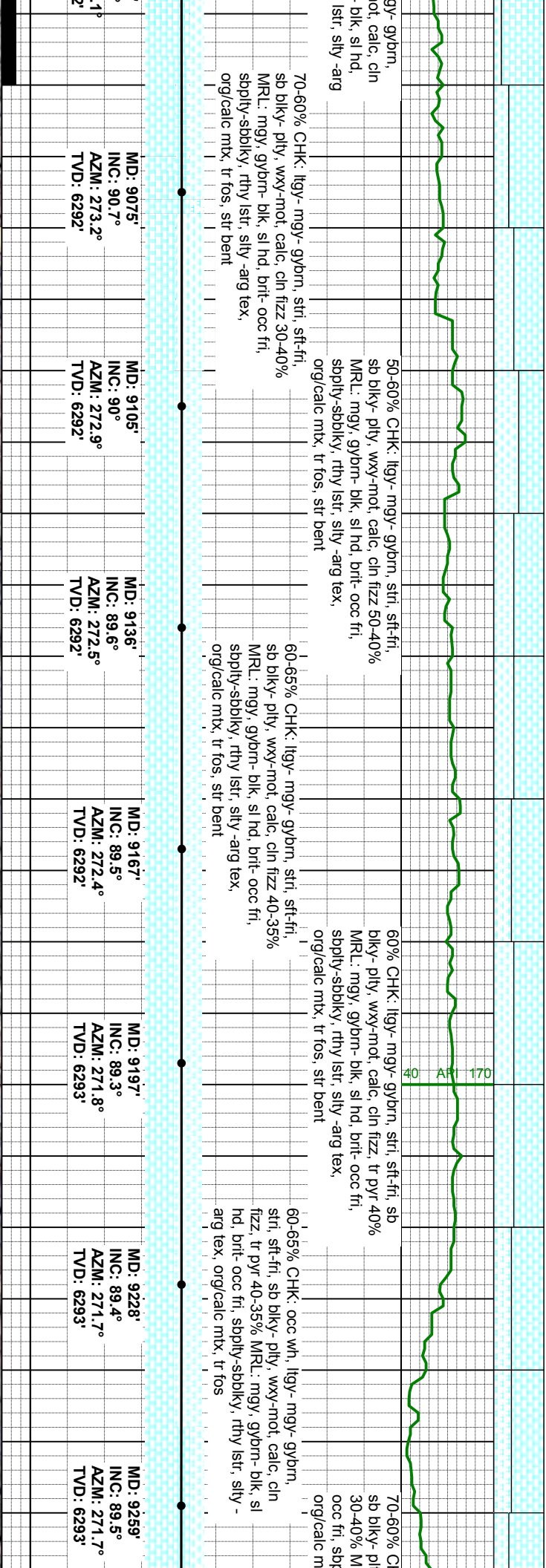
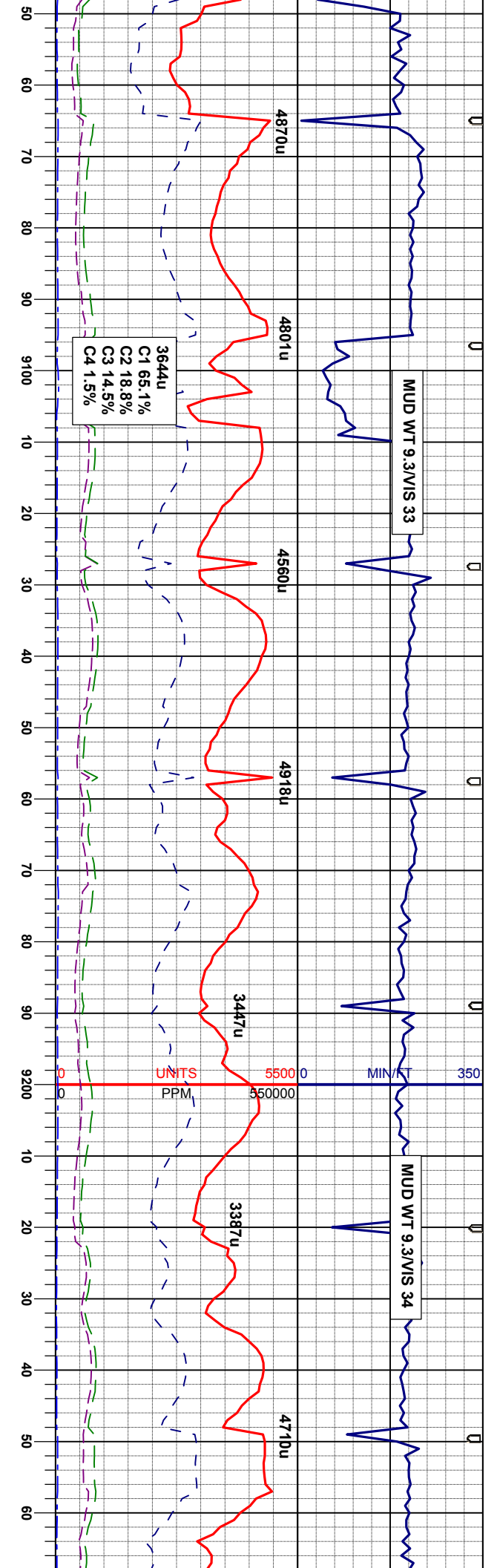
60% CHK: llyg- mgy, llygbrn- gybrn, stri, sft- fti, sb blyk- ply, wxy- mot, calc, cin fzz, occ intbd, 40% MRL: mgy, gybrn- blk, sl hd, brt- occ fti, sbply- sbply, rthy lstr, sily - arg tex, orgcalc mtx, vstr fos, occ bent

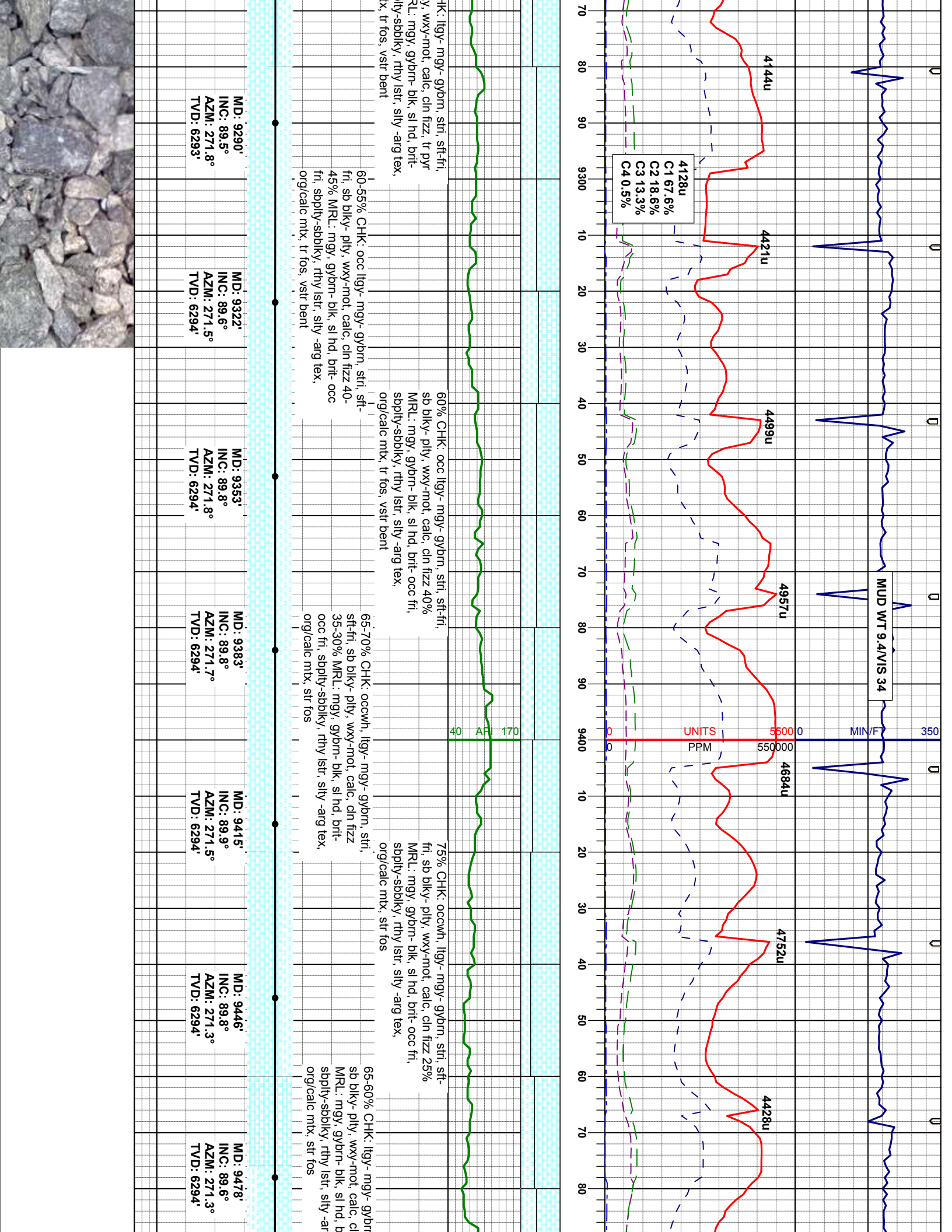
MD: 8231' INC: 89.9° AZM: 270.4° TVD: 6293'	MD: 8294' INC: 90.3° AZM: 270.6° TVD: 6294'	MD: 8325' INC: 91.2° AZM: 271.3° TVD: 6293'	MD: 8356' INC: 90.7° AZM: 271.1° TVD: 6293'
Trace	Fair	Moderate	Fair



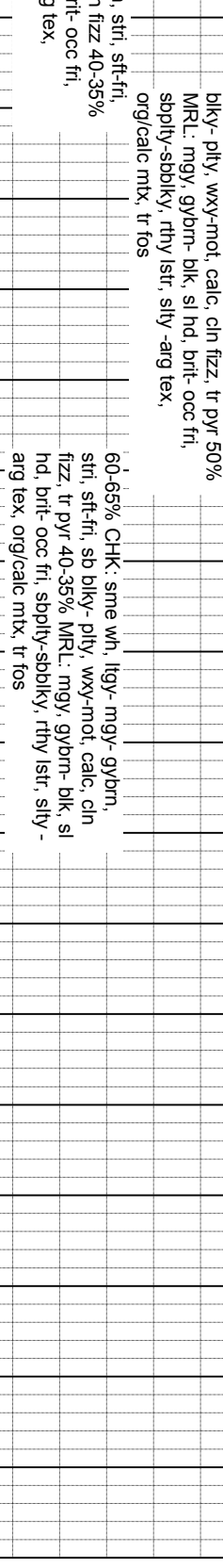
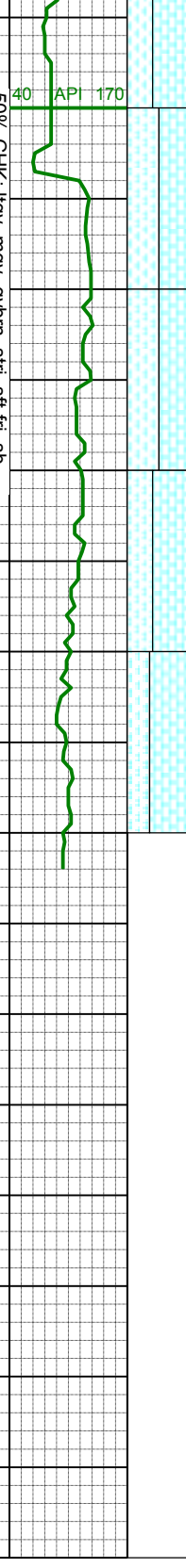
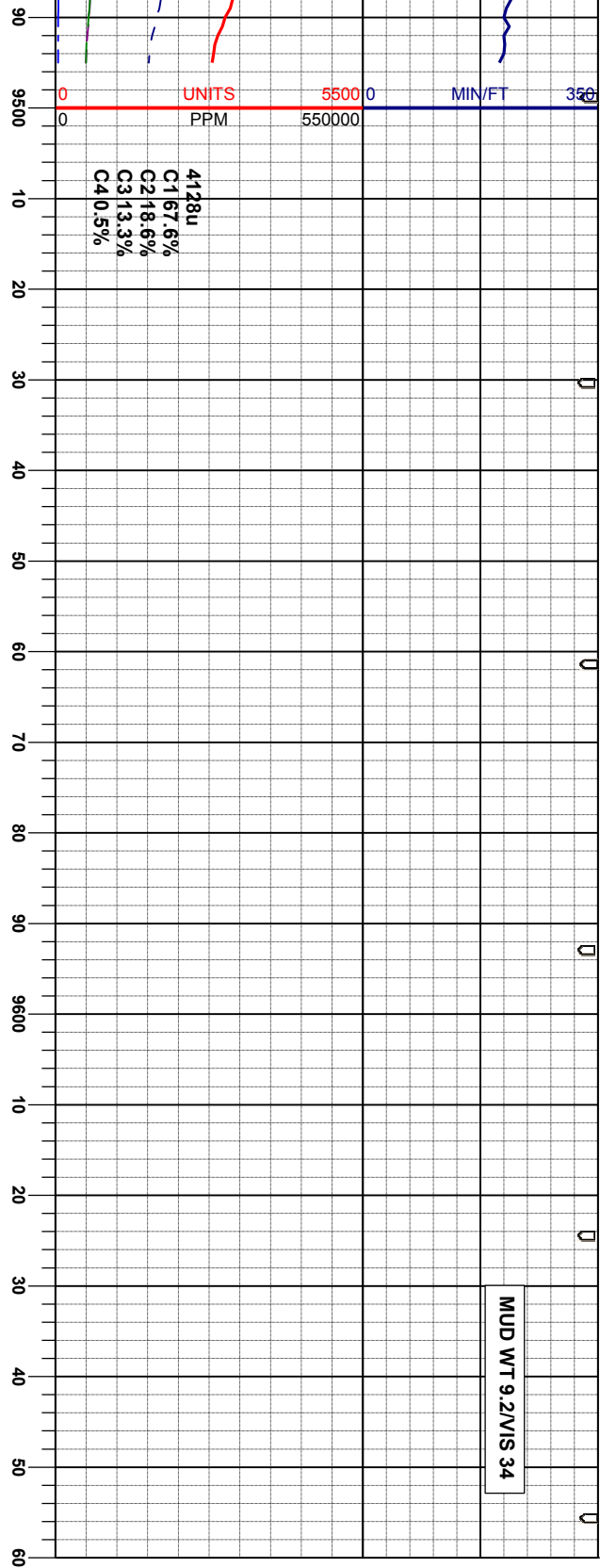








MUD WT 9.2/VIS 34



MD: 9509'
INC: 89.6°
AZM: 271.1°
TVD: 6295'

MD: 9540'
INC: 89.6°
AZM: 271.1°
TVD: 6295'

MD: 9571'
INC: 89.8°
AZM: 271.1°
TVD: 6295'