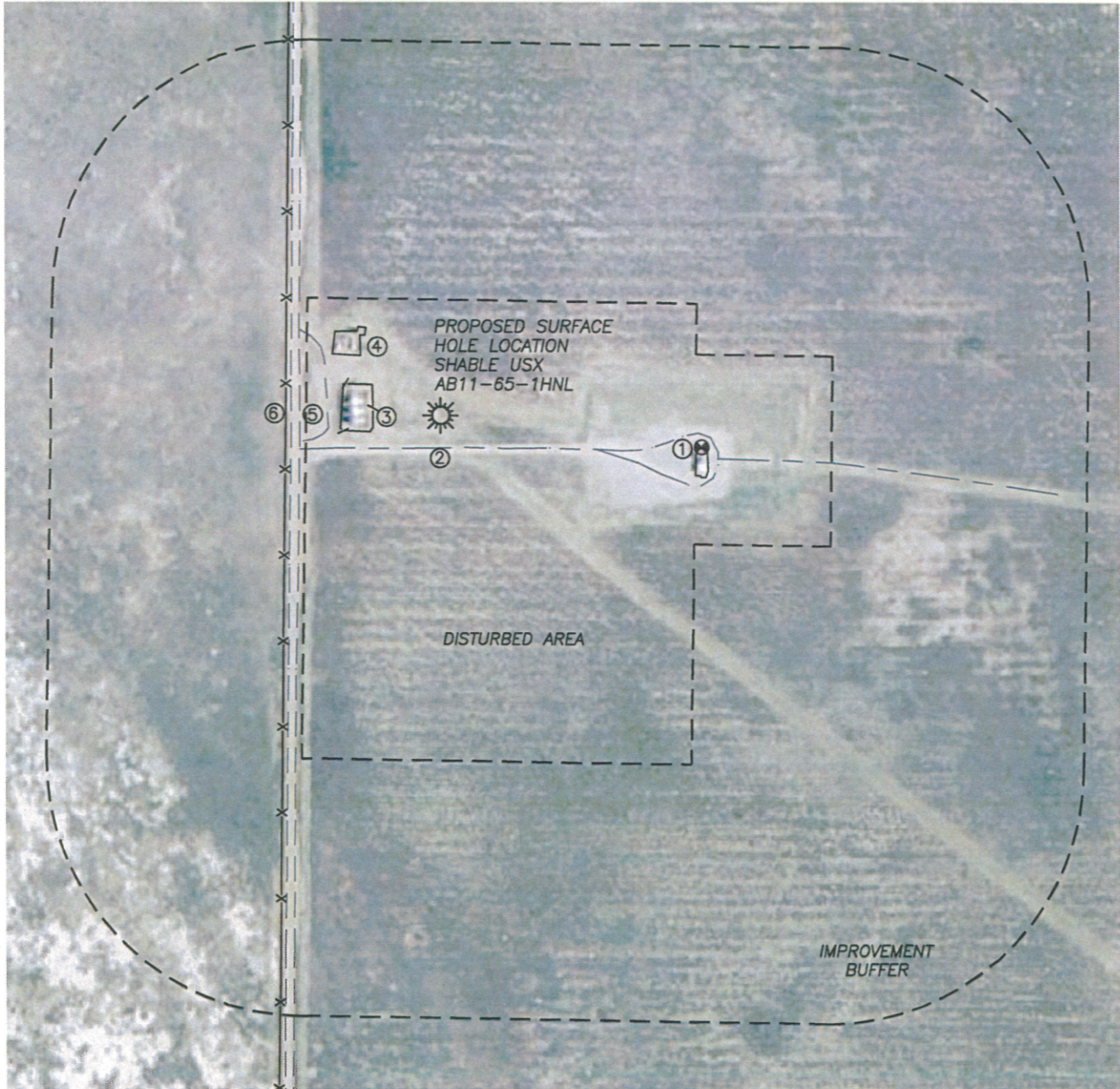


## LOCATION DRAWING SHABLE USX AB11-65-1HNL

SECTION 11, TOWNSHIP 7 NORTH, RANGE 64 WEST OF THE 6TH PRINCIPAL MERIDIAN



### IMPROVEMENTS

- |                     |          |
|---------------------|----------|
| 1. WELL/PUMP JACK:  | 412'± SE |
| 2. WELL ACCESS RD.: | 50'± S   |
| 3. PROD. TANKS:     | 106'± W  |
| 4. PROD. EQUIPMENT: | 156'± NW |
| 5. GRAVEL ROAD:     | 220'± W  |
| 6. FENCE:           | 242'± W  |

### DISTANCE TO NEAREST:

- |                     |          |
|---------------------|----------|
| BUILDING:           | 5280'±   |
| PUBLIC ROAD:        | 5280'±   |
| ABOVE GRND UTILITY: | 3260'± N |
| RAILROAD:           | 5280'±   |
| PROP. LINE:         | 250'± W  |

