



Physical Address: 401 Arapahoe St.  
Mail to: Box 384 Kiowa, CO 80117  
Ph. 303-621-8672 - Fax 303-621-2717  
www.highprairiesurvey.com

Job # 112091 Arthur Canyon #1-17

Inv # 1941

High Prairie Surveying of Kiowa, Colorado has in accordance with a request from **Bayhorse Petroleum**, has determined the location of **Arthur Canyon #1-17** to be **660 feet FNL**, and **1980 feet FEL**, (90° off Section lines) of **SECTION 17**, Township **35s**, Range **47w** of the 6th Principal Meridian, **Baca County**, Colorado.

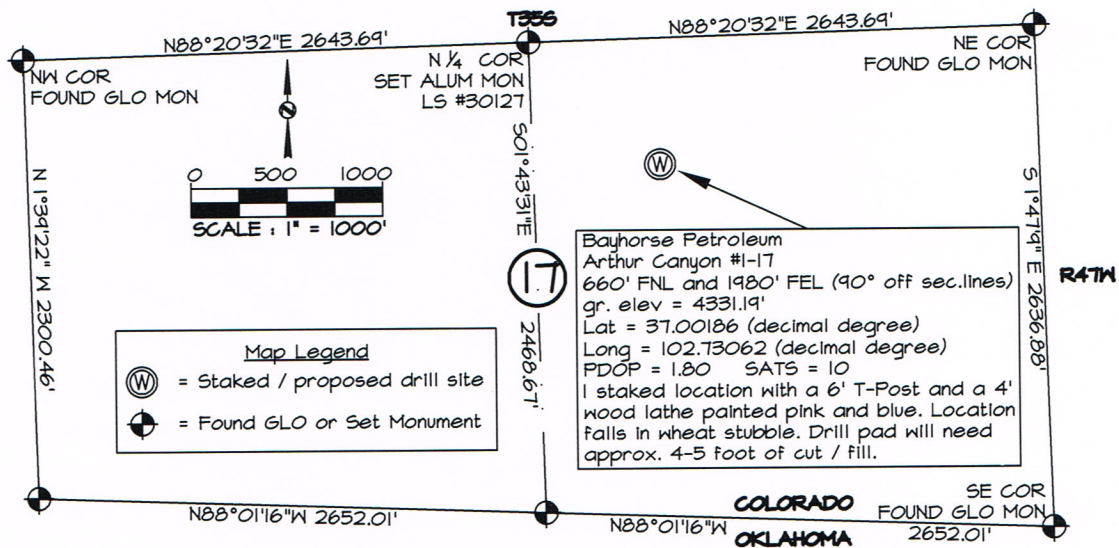
Date: Staked on 5/30/12 drawn on 6/10/12.  
Rev: 11/29/12

**Re:** Staked by Keith Westfall  
**Drawn:** Drawn by Elijah Frane

**Basis of Elevation Spot:** USGS BM = D 435, PID = HJ0225, H-Order = Adjusted, V-Order = First, Stability = A, P-DOP = 1.80, Sats = 10, US NAD 83 CO-S, Lat. = 37.08000, Long. = W102.57898, Elevation = 4321.97 gr. (us FT).

**Notes:** There are no improvements within 400' of proposed well pad.  
The ground elevation at staked location = 4331.19' gr.  
This drawing does not represent a monumented survey or Land Survey Plat.

**Basis of Bearing:** Bearings were determined based on the North line of Section 17 to bear N88°20'32"E with all other bearings contained herein relative thereto.





Physical Address: 401 Arapahoe St.  
Mail to: Box 384 Kiowa, CO 80117  
Ph. 303-621-8672 - Fax 303-621-2717  
www.highprairiesurvey.com

Job # 112091 Arthur Canyon #1-17

Inv # 1941

High Prairie Surveying of Kiowa, Colorado has in accordance with a request from **Bayhorse Petroleum.**, has determined the location of **Arthur Canyon #1-17** to be **660 feet FNL**, and **1980 feet FEL**, (90° off Section lines) of **SECTION 17**, Township **35s**, Range **47w** of the 6th Principal Meridian, **Baca County**, Colorado.

Date: Staked on 5/30/12 drawn on 6/10/12.  
Rev: 11/29/12

Re: Staked by Keith Westfall  
Drawn: Drawn by Elijah Frane

**Basis of Elevation Spot:** USGS BM = D 435, PID = HJ0225, H-Order = Adjusted, V-Order = First, Stability = A, P-DOP = 1.80, Sats = 10, US NAD 83 CO-S, Lat. = 37.08000, Long. = W102.57898, Elevation = 4321.97 gr. (us FT).

**Notes:** There are no improvements within 400' of proposed well pad.  
The ground elevation at staked location = 4331.19' gr.  
This drawing does not represent a monumented survey or Land Survey Plat.

**Basis of Bearing:** Bearings were determined based on the North line of Section 17 to bear N88°20'32"E with all other bearings contained herein relative thereto.

