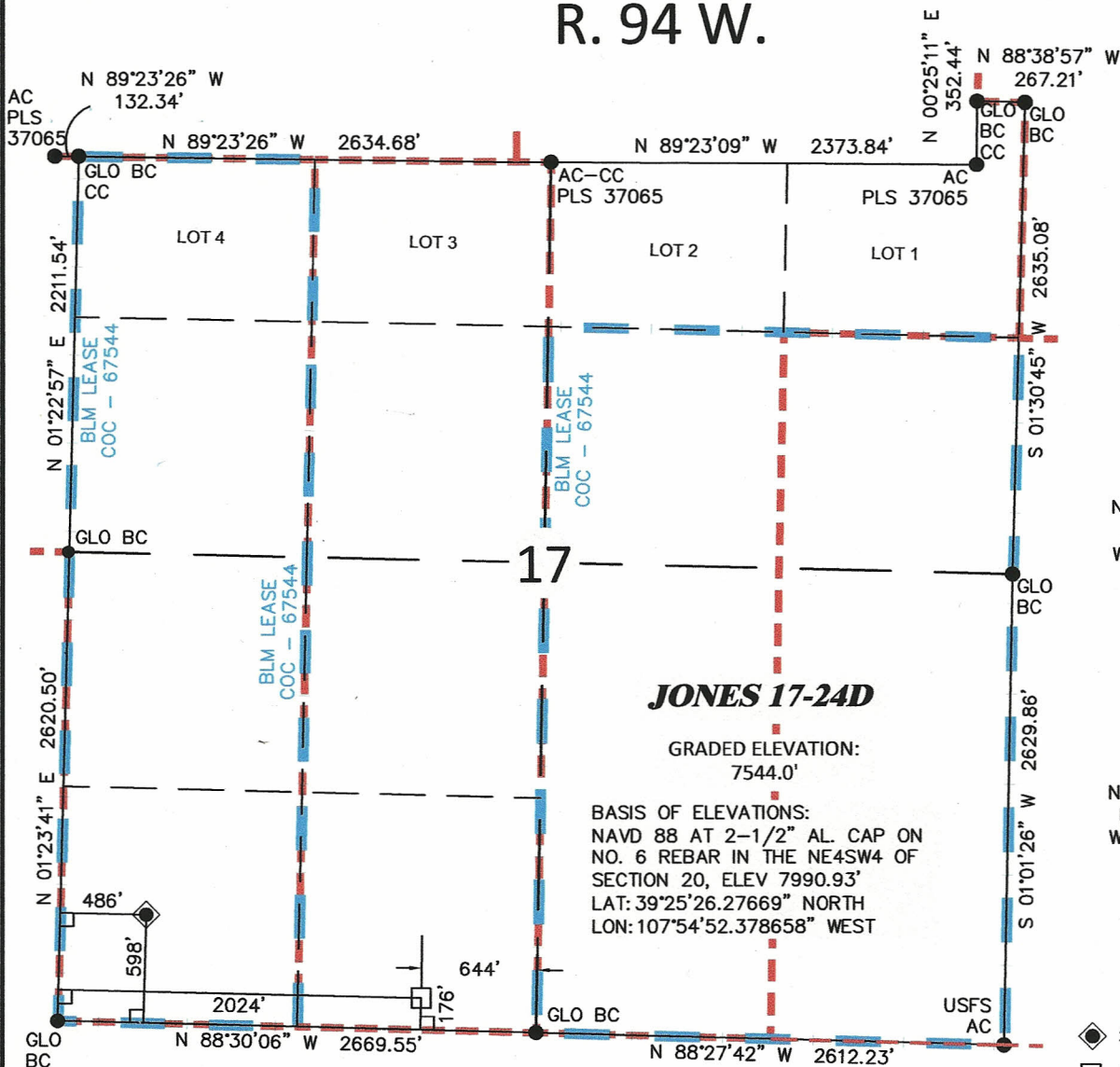


R. 94 W.



SCALE: 1"=1000'
0' 250' 500' 1000'

T. 7 S.

SURFACE HOLE LOCATION

SHL LATITUDE(NAD 83)
NORTH 39.433378 DEG.
SHL LONGITUDE(NAD 83)
WEST 107.917756 DEG.
SHL COLORADO CENTRAL
ZONE (NAD83)
NORTHING
1591824.39 FT.
EASTING
2317181.66 FT.

BOTTOM HOLE LOCATION

BHL LATITUDE(NAD 83)
NORTH 39.432223 DEG.
BHL LONGITUDE(NAD 83)
WEST 107.912306 DEG.
BHL COLORADO CENTRAL
ZONE (NAD83)
NORTHING
1591363 FT.
EASTING
2318709 FT.

LEGEND

- ◆ SURFACE HOLE LOCATION
- BOTTOM HOLE LOCATION
- FOUND CORNER MONUMENT, AS NOTED
- LEASE LINE
- - - PROPERTY LINE

SURVEYOR'S STATEMENT

I, Ronald C. Rennke, an employee and agent for William H. Smith & Associates P.C., Inc. state the plat hereon is a representation of a field survey made under my authority of the shown JONES 17-24D surface hole location, being staked on the ground as shown hereon on June 18, 2012.

NOTES

- (1.) Basis of Datum is the Colorado State Plane Coordinate System, Central Zone, NAD83 (horizontal) & NAVD88 (vertical) derived from OPUS solution.
- (2.) The Basis of Bearings for this survey is referenced to the south line of the SW4 of Section 17 monumented with USGLO brass caps dated 1911 and bearing N 88°30'06" W.
- (3.) Current land use is native, non-crop & rangeland.
- (4.) Improvements exist within 400' radius, see exhibit 2 for details.
- (5.) GPS operator Ron Rennke, observed PDOP 1.6
- (6.) All GPS observations for the shown well location are in compliance with COGCC rule no. 215.

Notice: In accordance with Colorado State Law, any legal action based upon any defect in this survey plat must commence within three (3) years after first discovery of such defect. In no event may any action based upon any defect in this survey plat be commenced more than ten (10) years from the date of certification shown hereon.



WILLIAM H. SMITH & ASSOCIATES P.C.
SURVEYING CONSULTANTS
550 EAST SECOND NORTH PHONE: 307-875-3638
GREEN RIVER, WY 307-875-3639
www.whsmithpc.com

JOB NO: 2011900.004
REVISIONS:

DATE DRAWN - BY: 6/18/12 - rcr
SCALE: 1" = 1000'
EXHIBIT 1

PAGE 1 OF 1

**PLAT OF DRILLING LOCATION
FOR NOBLE ENERGY, INC
JONES 17-24D - SW4SW4 SECTION 17
598' F/SL & 486' F/WL, SECTION 17
T. 7 S., R. 94 W., 6TH P.M.
GARFIELD COUNTY, COLORADO**