

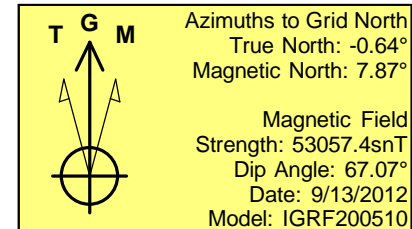
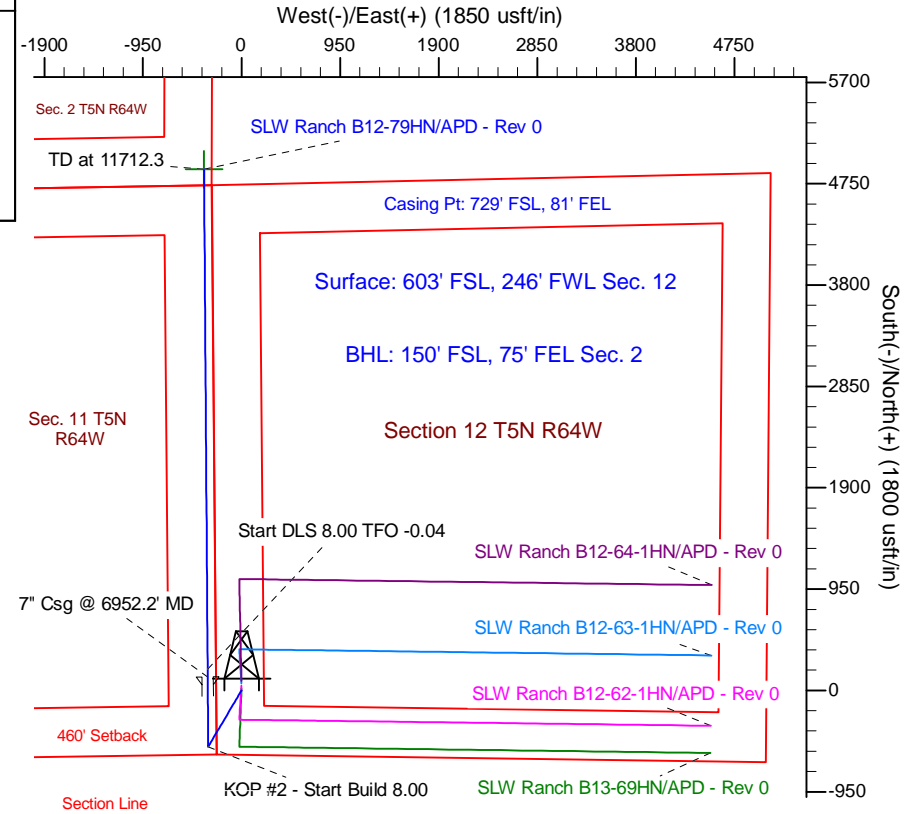
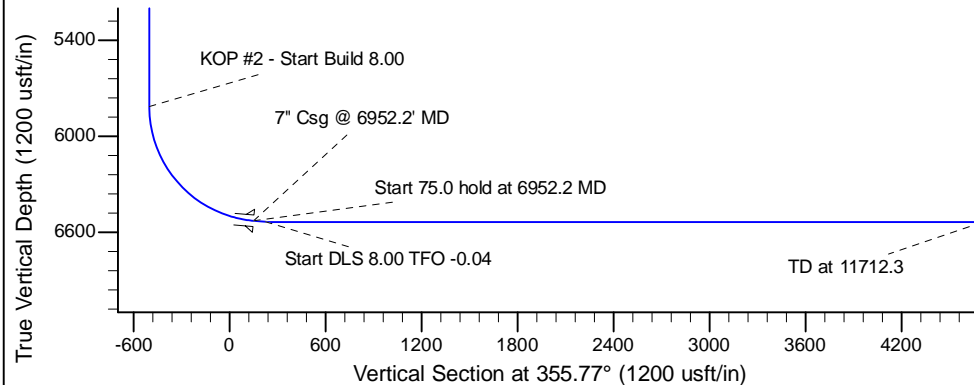
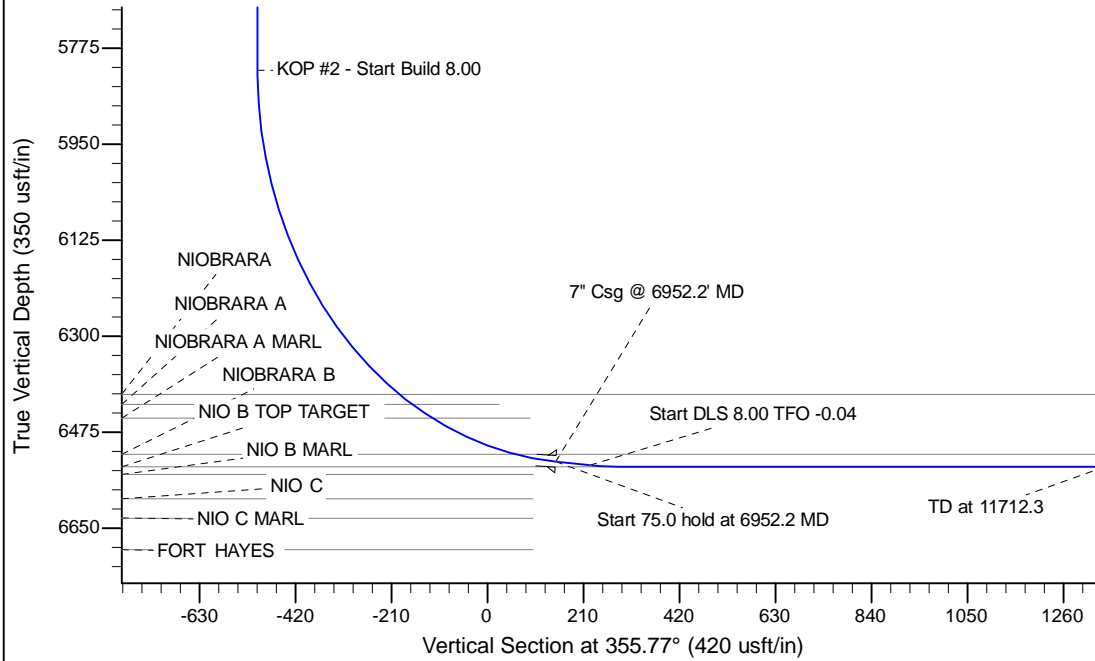
Project: Wattenberg Field
Site: B (Sec.12-T05N-R64W) Weld County, CO
Well: SLW Ranch B12-79HN
Wellbore: Original Drilling
Design: APD - Rev 0

Northern Region Drilling

Geodetic System: US State Plane 1983
Datum: North American Datum 1983
Ellipsoid: GRS 1980
Zone: Colorado Northern Zone
System Datum: Mean Sea Level

SECTION DETAILS

Sec	MD	Inc	Azi	TVD	+N/-S	+E/-W	Dleg	TFace	VSect	Target
1	0.0	0.00	0.00	0.0	0.0	0.0	0.00	0.00	0.0	
2	1200.0	0.00	0.00	1200.0	0.0	0.0	0.00	0.00	0.0	
3	1799.9	15.00	211.30	1793.0	-66.7	-40.5	2.50	211.30	-63.5	
4	3584.6	15.00	211.30	3517.0	-461.3	-280.5	0.00	0.00	-439.4	
5	4184.4	0.00	0.00	4110.0	-528.0	-321.0	2.50	180.00	-502.9	
6	5889.7	0.00	0.00	5815.3	-528.0	-321.0	0.00	0.00	-502.9	
7	6952.2	85.00	359.58	6528.7	125.8	-325.8	8.00	359.58	149.4	
8	7027.2	85.00	359.58	6535.3	200.5	-326.3	0.00	0.00	224.0	
9	7089.7	90.00	359.58	6538.0	262.9	-326.8	8.00	-0.04	286.3	
10	11712.3	90.00	359.58	6538.0	4885.3	-361.0	0.00	0.00	4898.7	SLW Ranch B12-79HN BHL 150'FSL, 75'FEL



WELL DETAILS: SLW Ranch B12-79HN			
Ground Level:	4595.0	Latitude	40.408150
Northing	1393076.92	Easting	3276452.14
		Longitude	-104.507250
Plan: APD - Rev 0 (SLW Ranch B12-79HN/Original Drilling)			
Created By:	Carrie Willers	Date:	15:07, September 25 2012
Checked:		Date:	
Reviewed:		Date:	
Approved:		Date:	