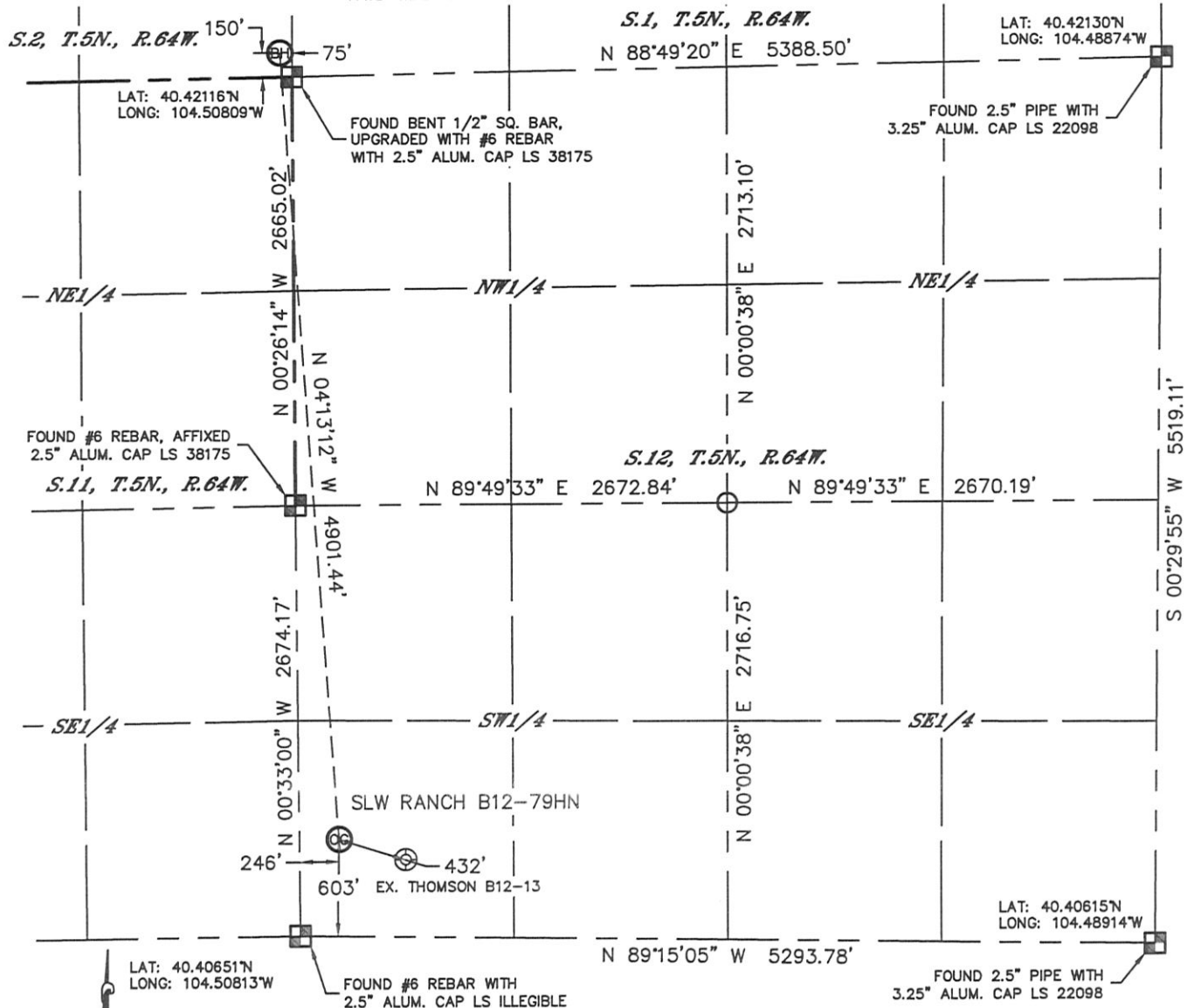


WELL LOCATION CERTIFICATE

SECTION: 12
TOWNSHIP: 5N
RANGE: 64W

THIS MAP DOES NOT REPRESENT A BOUNDARY SURVEY



In accordance with a request from Mike Rodine with Noble Energy Inc. Lat40°, Inc. has determined the surface location of the SLW RANCH B12-79HN to be 603' from the SOUTH line and 246' from the WEST line as measured at right angles from the section lines of Section 12, Township 5 North, Range 64 West and the bottom hole to be 150' from the SOUTH line and 75' from the EAST line as measured at right angles from the section lines of Section 2, Township 5 North, Range 64 West of the Sixth Principal Meridian, County of Weld, State of Colorado.

I hereby state that this Well Location Certificate was prepared by me, or under my direct supervision, that the fieldwork was completed on 5/30/2012, for and on behalf of Noble Energy Inc. That this is not a Land Survey Plat or an Improvement Survey Plat, and that it is not to be relied upon for establishment of fence, building, or other future improvement lines.

SURFACE LOCATION

LAT: 40.40815°N
LONG: 104.50725°W
PDOP: 2.4
ELEV: 4595'
1/4, 1/4: SW1/4 SW1/4
NEAREST PROPERTY LINE: 246' WEST

BOTTOM HOLE

LAT: 40.42157°N
LONG: 104.50835°W

NOTE:

- 1) Bearings shown are Grid Bearings of the Colorado State Plane Coordinate System, North Zone, North American Datum 1983/2007. The lineal dimensions as contained herein are based upon the "U.S. Survey Foot."
- 2) Ground elevations are based on an observed GPS elevation (NAVD 1988 DATUM).
- 3) NEAREST EXISTING WELL: THOMSON B12-13, 432'
- 4) IMPROVEMENTS: See LOCATION DRAWING for all visible Improvements within 400' of disturbed area.
- 5) SURFACE USE: CROP LAND
- 6) INSTRUMENT OPERATOR: ADAM KELLY

NOTE

According to Colorado law, you must commence any legal action based upon any defect in this W.L.C. within three years after you discover such defect. In no event, may any action based upon any defect in this survey be commenced more than ten years after the date of the certificate shown hereon. (13-80-105 C.R.S.)

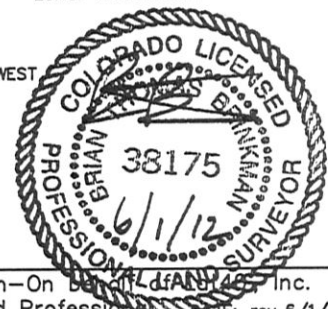
LEGEND

- = ALIQUOT MONUMENT AS DESCRIBED
- = CALCULATED POSITION

(SHEET 1 OF 2)

Brian T. Brinkman-On Behalf of Lat40°, Inc.
Colorado Licensed Professional
Land Surveyor No. 38175

DATE: rev 6/1/2012
PROJECT#: 2012029

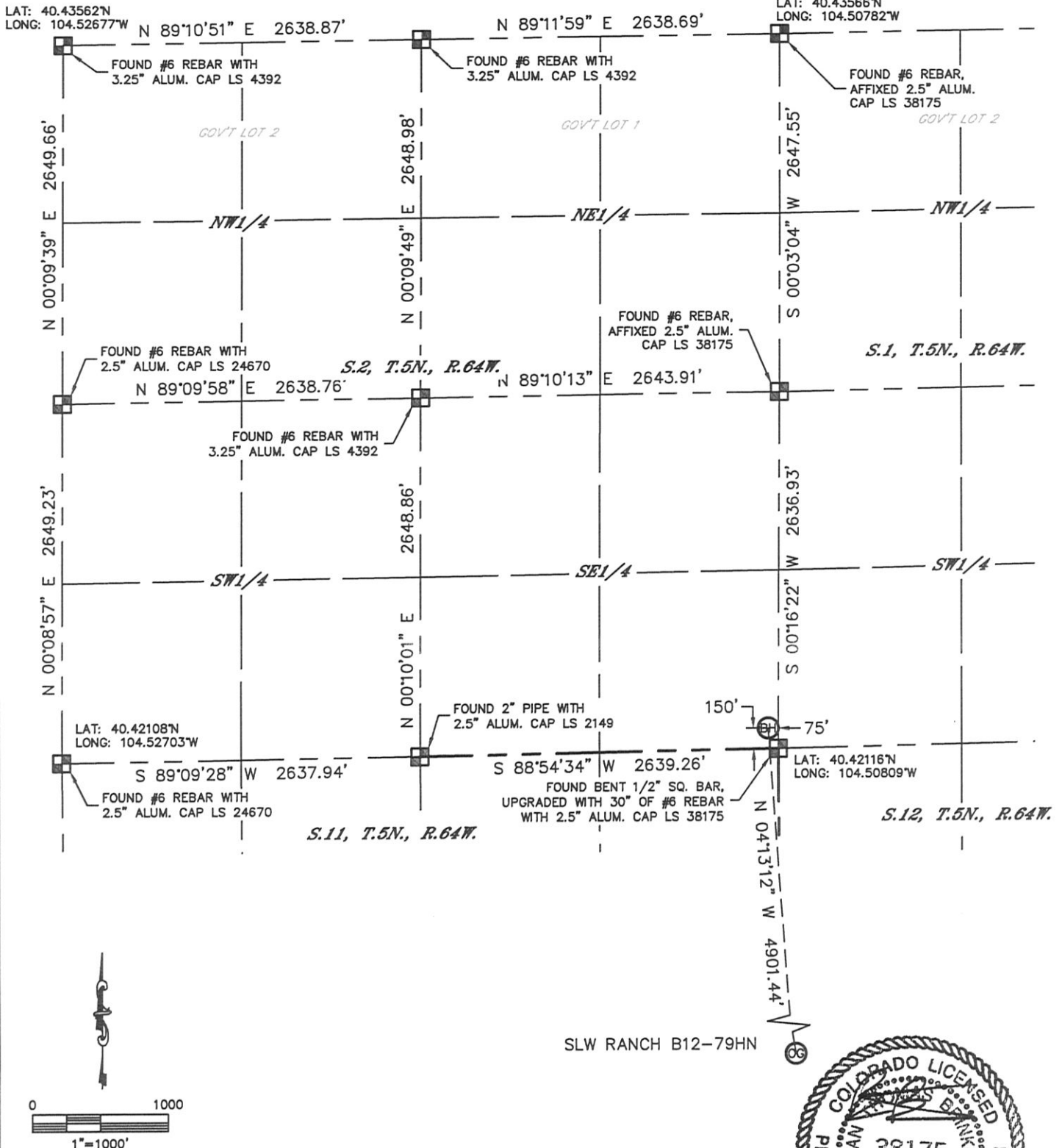


Lat40°, Inc. 1635 Foxtrail Drive, Suite 325 Loveland, CO 970-776-3321

WELL LOCATION CERTIFICATE

THIS MAP DOES NOT REPRESENT A BOUNDARY SURVEY

SECTION: 12
TOWNSHIP: 5N
RANGE: 64W



NOTE
According to Colorado law, you must commence any legal action based upon any defect in this W.L.C. within three years after you discover such defect. In no event, may any action based upon any defect in this survey be commenced more than ten years after the date of the certificate shown hereon. (13-80-105 C.R.S.)

LEGEND
[Square symbol] = ALIQUOT MONUMENT AS DESCRIBED
[Circle symbol] = CALCULATED POSITION

(SHEET 2 OF 2)

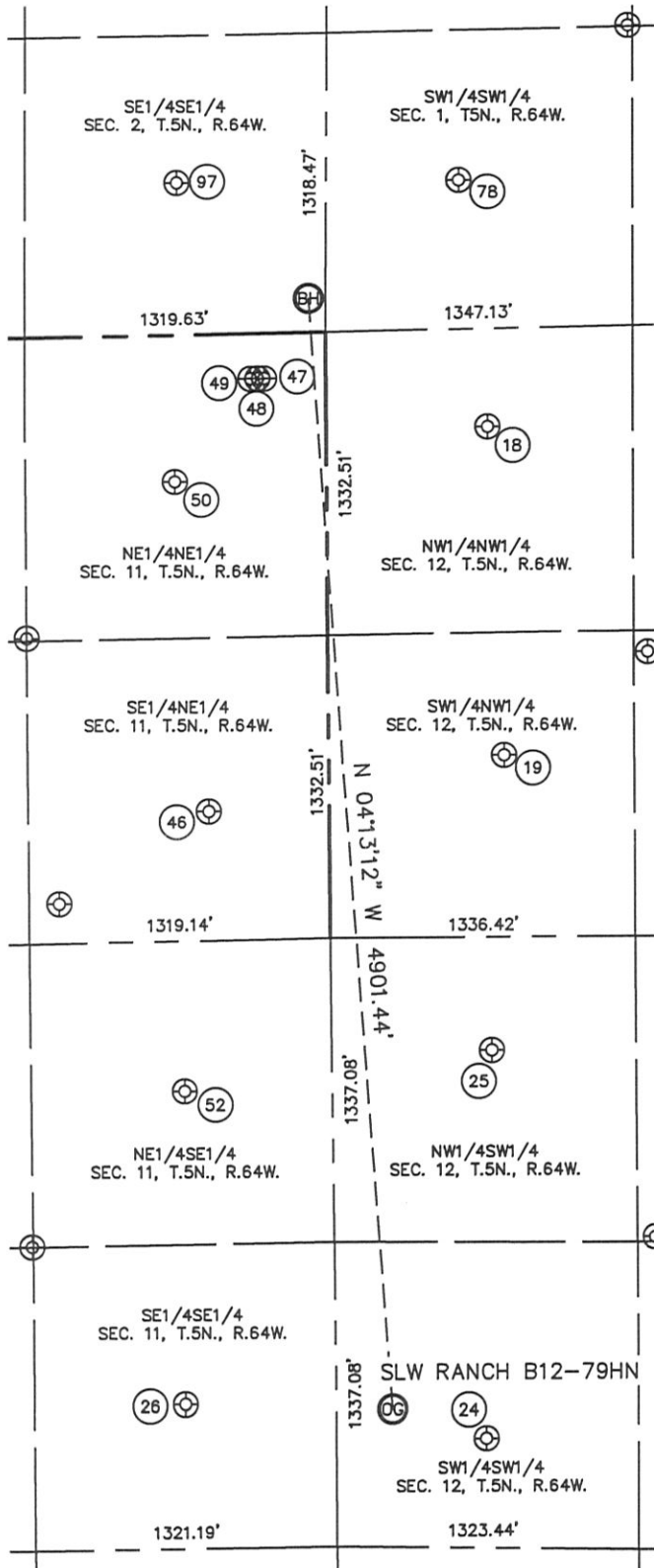
Brian T. Brinkman-On Demand Land Survey, Inc.
Colorado Licensed Professional Land Surveyor No. 38175
DATE: rev 6/1/2012
PROJECT#: 2012029



SITE SKETCH

SLW RANCH B12-79HN

SECTION: 12
TOWNSHIP: 5N
RANGE: 64W



(18)
TREBOR B12-4
NW1/4NW1/4
432' FNL
707' FWL
LAT-40.41999°N
LONG-104.50555°W
PDOP: 1.7
ELEV: 4606'

(19)
TREBOR B12-5
SW1/4NW1/4
1878' FNL
769' FWL
LAT-40.41603°N
LONG-104.50535°W
PDOP: 1.3
ELEV: 4592'

(24)
THOMSON B12-13
SW1/4SW1/4
479' FSL
657' FWL
LAT-40.40778°N
LONG-104.50577°W
PDOP: 1.5
ELEV: 4596'

(25)
THOMSON B12-12
NW1/4SW1/4
2186' FSL
701' FWL
LAT-40.41246°N
LONG-104.50561°W
PDOP: 2.1
ELEV: 4601'

(26)
TREBOR B11-16
SE1/4SE1/4
634' FSL
661' FEL
LAT-40.40825°N
LONG-104.51050°W
PDOP: 1.4
ELEV: 4596'

(46)
TREBOR B11-8
SE1/4NE1/4
2096' FNL
528' FEL
LAT-40.41540°N
LONG-104.51001°W
PDOP: 1.1
ELEV: 4604'

(47)
WACKER B12-69HN
NE1/4NE1/4
198' FNL
271' FEL
LAT-40.42061°N
LONG-104.50906°W
PDOP: 1.4
ELEV: 4598'

(48)
WACKER B1-79HN
NE1/4NE1/4
199' FNL
300' FEL
LAT-40.42061°N
LONG-104.50917°W
PDOP: 1.4
ELEV: 4598'

(49)
WACKER B11-69HN
NE1/4NE1/4
199' FNL
330' FEL
LAT-40.42061°N
LONG-104.50927°W
PDOP: 1.9
ELEV: 4598'

(50)
TREBOR B11-1
NE1/4NE1/4
643' FNL
665' FEL
LAT-40.41938°N
LONG-104.51048°W
PDOP: 1.6
ELEV: 4596'

(52)
TREBOR B11-9
NE1/4SE1/4
2010' FSL
648' FEL
LAT-40.41202°N
LONG-104.51045°W
PDOP: 1.3
ELEV: 4598'

(78)
LUCCI BC B1-13
SW1/4SW1/4
658' FSL
580' FWL
LAT-40.42298°N
LONG-104.50596°W
PDOP: 1.5
ELEV: 4613'

(97)
MEYER B2-16
SE1/4SE1/4
671' FSL
656' FEL
LAT-40.42299°N
LONG-104.51040°W
PDOP: 3.4
ELEV: 4603'

