

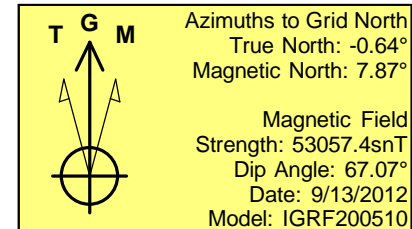
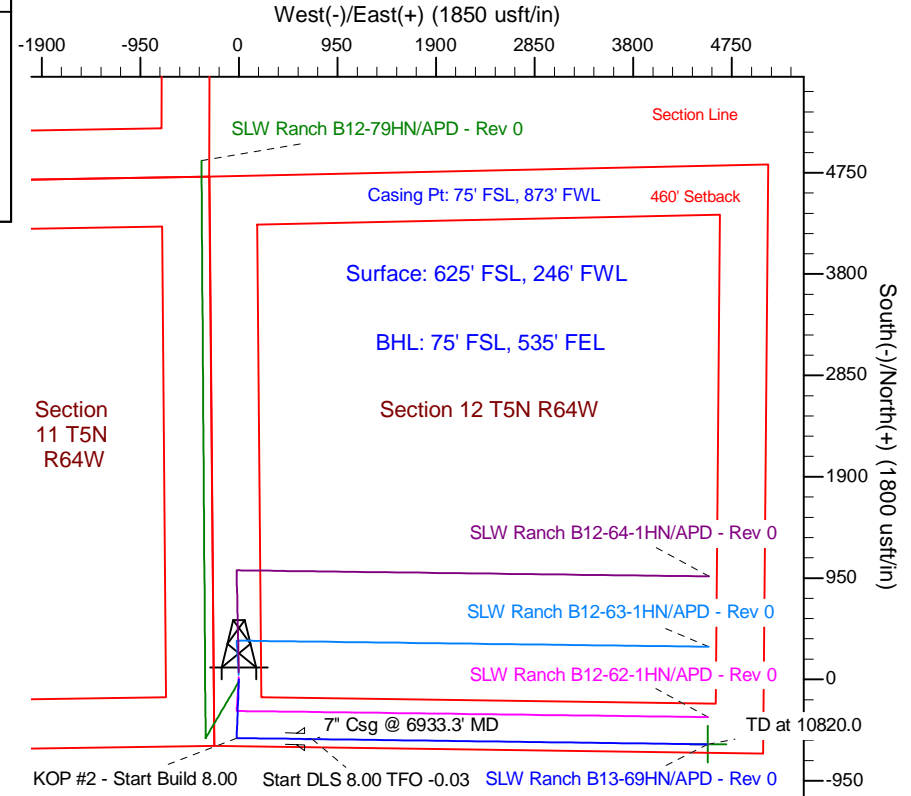
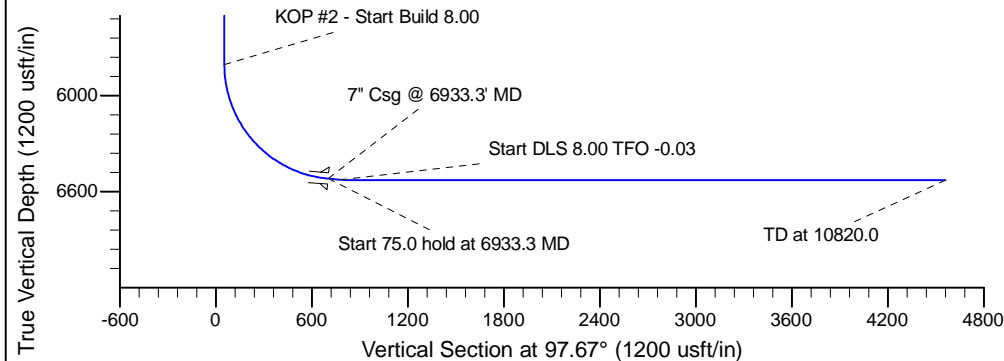
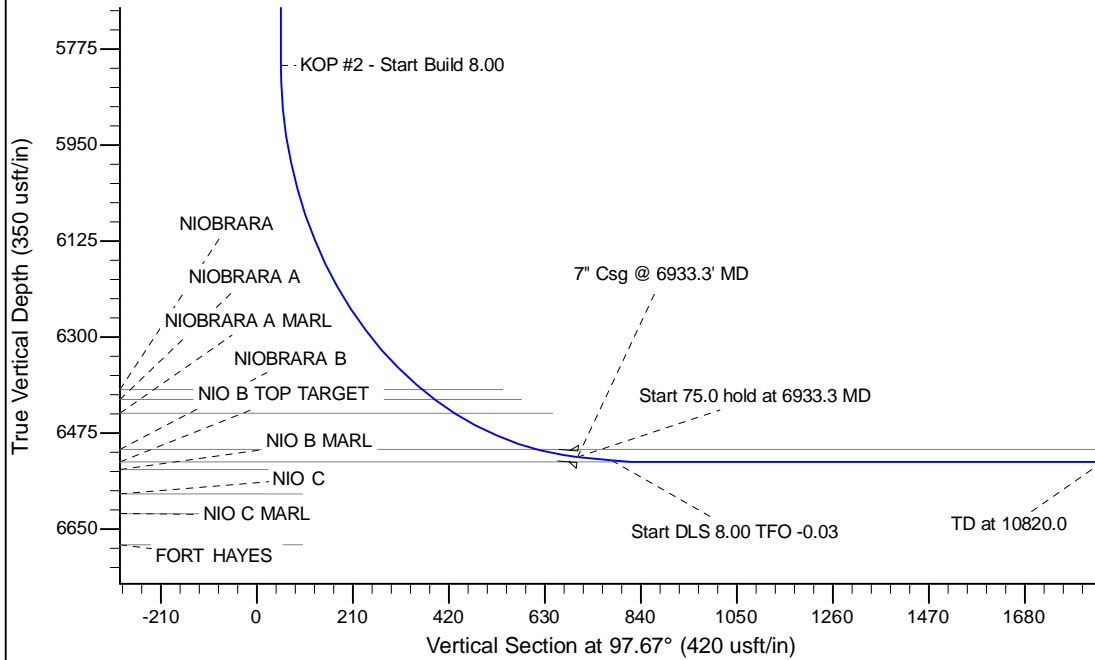
Project: Wattenberg Field
Site: B (Sec.12-T05N-R64W) Weld County, CO
Well: SLW Ranch B13-69HN
Wellbore: Original Drilling
Design: APD - Rev 0

Northern Region Drilling

Geodetic System: US State Plane 1983
Datum: North American Datum 1983
Ellipsoid: GRS 1980
Zone: Colorado Northern Zone
System Datum: Mean Sea Level

SECTION DETAILS

Sec	MD	Inc	Azi	TVD	+N/-S	+E/-W	Dleg	TFace	VSect	Target
1	0.0	0.00	0.00	0.0	0.0	0.0	0.00	0.00	0.0	
2	1500.0	0.00	0.00	1500.0	0.0	0.0	0.00	0.00	0.0	
3	2099.8	15.00	182.19	2093.0	-78.0	-3.0	2.50	182.19	7.5	
4	3623.7	15.00	182.19	3565.0	-472.0	-18.0	0.00	0.00	45.1	
5	4223.5	0.00	0.00	4158.0	-550.0	-21.0	2.50	180.00	52.6	
6	5870.8	0.00	0.00	5805.3	-550.0	-21.0	0.00	0.00	52.6	
7	6933.3	85.00	90.74	6518.7	-558.4	632.7	8.00	90.74	701.6	
8	7008.3	85.00	90.74	6525.3	-559.4	707.4	0.00	0.00	775.8	
9	7070.8	90.00	90.74	6528.0	-560.2	769.8	8.00	-0.03	837.7	
10	10820.0	90.00	90.74	6528.0	-608.4	4518.7	0.00	0.00	4559.5	SLW Ranch B13-69HN BHL 75'FSL, 535'FEL



WELL DETAILS: SLW Ranch B13-69HN			
Ground Level:	4595.0	Latitude	40.408210
Northing	1393098.77	Easting	3276451.90
		Longitude	-104.507250
Plan: APD - Rev 0 (SLW Ranch B13-69HN/Original Drilling)			
Created By:	Carrie Willers	Date:	16:22, September 25 2012
Checked:		Date:	
Reviewed:		Date:	
Approved:		Date:	