

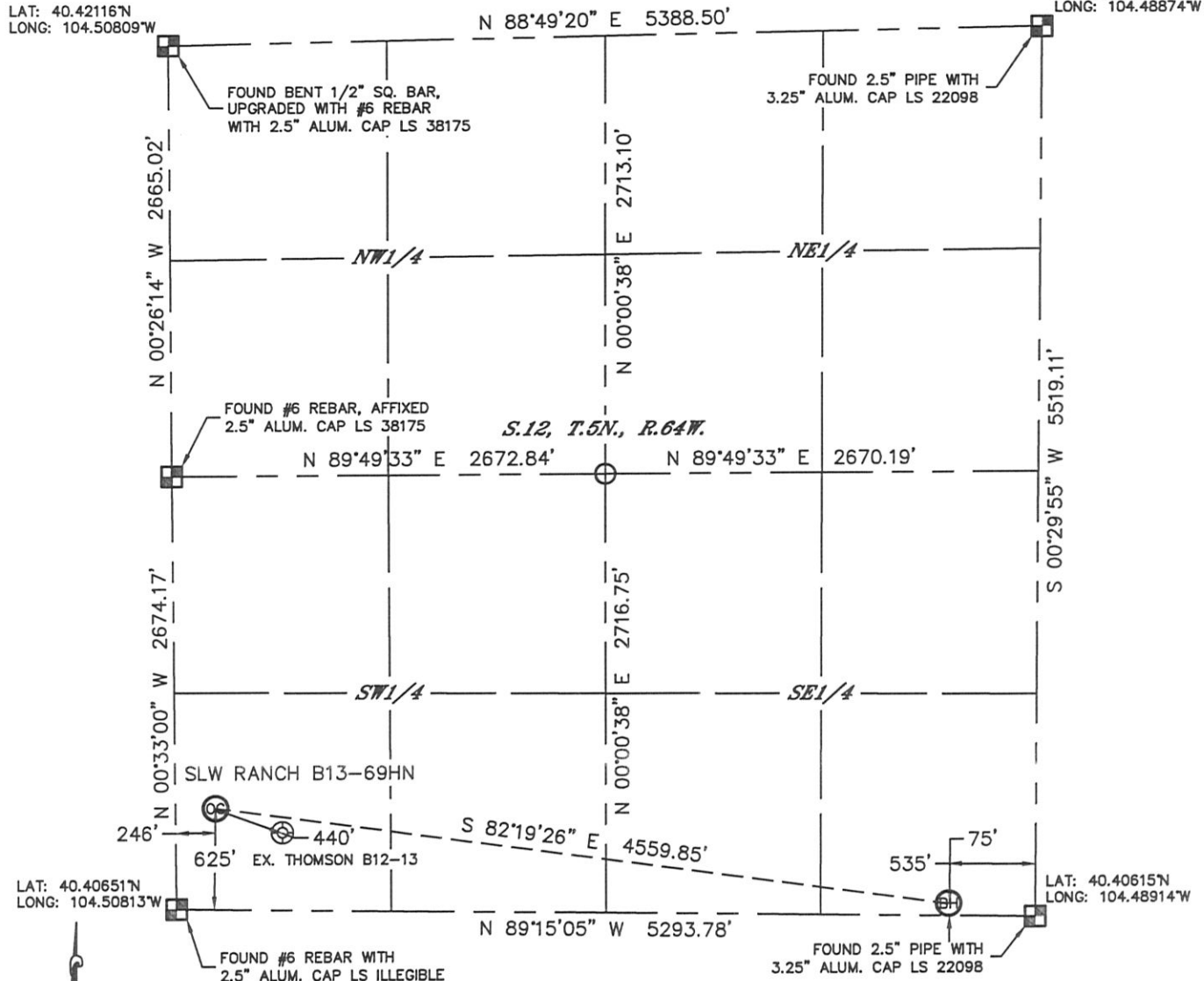
Lat40°, Inc. 1635 Foxtrail Drive, Suite 325 Loveland, CO 970-776-3321

WELL LOCATION CERTIFICATE

THIS MAP DOES NOT REPRESENT A BOUNDARY SURVEY

SECTION: 12
TOWNSHIP: 5N
RANGE: 64W

LAT: 40.42130°N
LONG: 104.48874°W



In accordance with a request from Mike Rodine with Noble Energy Inc. Lat40°, Inc. has determined the surface location of the SLW RANCH B13-69HN to be 625' from the SOUTH line and 246' from the WEST line and the bottom hole to be 75' from the SOUTH line and 535' from the EAST line as measured at right angles from the section lines of Section 12, Township 5 North, Range 64 West of the Sixth Principal Meridian, County of Weld, State of Colorado.

I hereby state that this Well Location Certificate was prepared by me, or under my direct supervision, that the fieldwork was completed on 5/30/2012, for and on behalf of Noble Energy Inc. That this is not a Land Survey Plat or an Improvement Survey Plat, and that it is not to be relied upon for establishment of fence, building, or other future improvement lines.

NOTE:

- 1) Bearings shown are Grid Bearings of the Colorado State Plane Coordinate System, North Zone, North American Datum 1983/2007. The lineal dimensions as contained herein are based upon the "U.S. Survey Foot."
- 2) Ground elevations are based on an observed GPS elevation (NAVD 1988 DATUM).
- 3) NEAREST EXISTING WELL: THOMSON B12-13, 440'
- 4) IMPROVEMENTS: See LOCATION DRAWING for all visible Improvements within 400' of disturbed area.
- 5) SURFACE USE: CROP LAND
- 6) INSTRUMENT OPERATOR: ADAM KELLY

NOTE

According to Colorado law, you must commence any legal action based upon any defect in this W.L.C. within three years after you discover such defect. In no event, may any action based upon any defect in this survey be commenced more than ten years after the date of the certificate shown hereon. (13-80-105 C.R.S.)

LEGEND

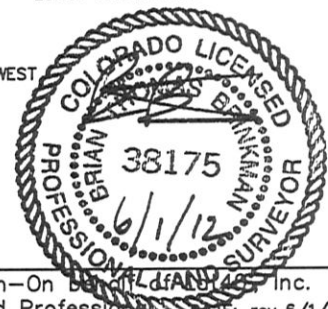
- = ALIQUOT MONUMENT AS DESCRIBED
- = CALCULATED POSITION

SURFACE LOCATION

LAT: 40.40821°N
LONG: 104.50725°W
PDOP: 2.5
ELEV: 4595'
1/4, 1/4: SW1/4SW1/4
NEAREST PROPERTY LINE: 246' WEST

BOTTOM HOLE

LAT: 40.40640°N
LONG: 104.49105°W

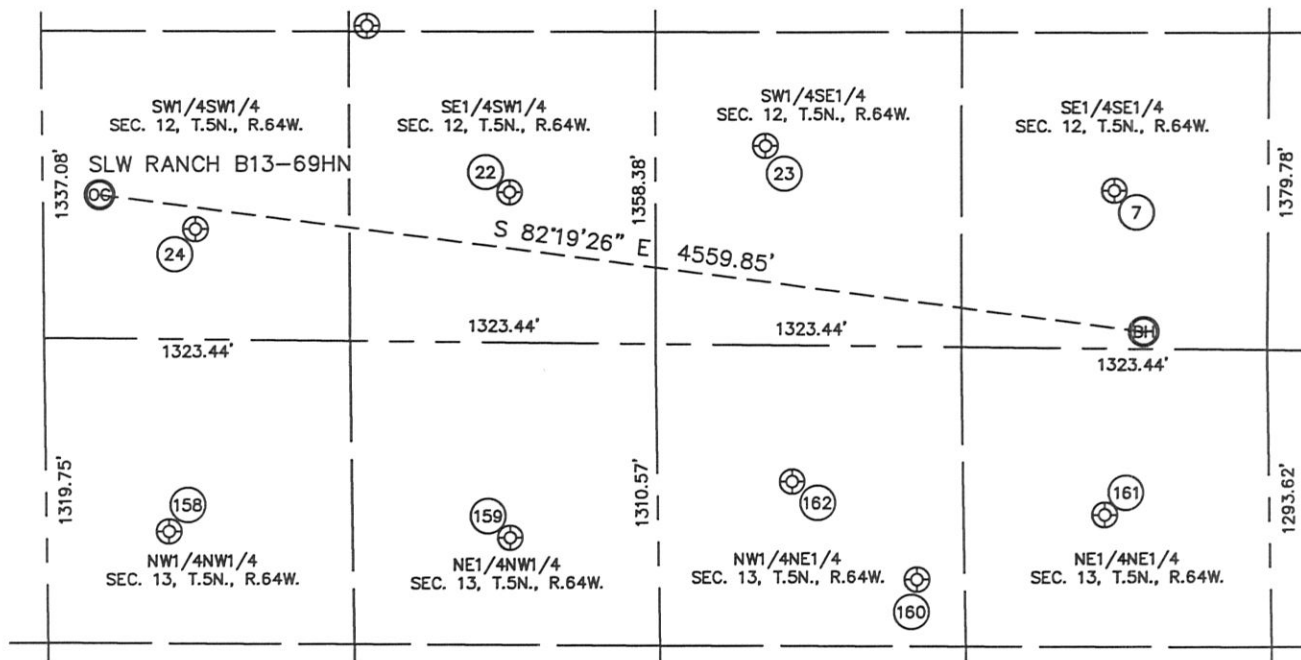


Brian T. Brinkman-On Behalf of Lat40°, Inc.
Colorado Licensed Professional Surveyor No. 38175
DATE: rev 6/1/2012
PROJECT#: 2012029

SITE SKETCH

SLW RANCH B13-69HN

SECTION: 12
TOWNSHIP: 5N
RANGE: 64W



7

SLW 2-12
SE1/4SE1/4
686' FSL
666' FEL
LAT-40.40808°N
LONG-104.49148°W
PDOP: 1.1
ELEV: 4611'

22

THOMSON 4-12
SE1/4SW1/4
653' FSL
2021' FWL
LAT-40.40817°N
LONG-104.50088°W
PDOP: 1.5
ELEV: 4589'

23

KC B12-15
SW1/4SE1/4
867' FSL
2177' FEL
LAT-40.40868°N
LONG-104.49689°W
PDOP: 1.5
ELEV: 4582'

24

THOMSON B12-13
SW1/4SW1/4
479' FSL
657' FWL
LAT-40.40778°N
LONG-104.50577°W
PDOP: 1.5
ELEV: 4596'

158

MILLER DEPPE 11-13
NW1/4NW1/4
832' FNL
529' FWL
LAT-40.40419°N
LONG-104.50623°W
PDOP: 1.7
ELEV: 4592'

159

MILLER DEPPE 1
NE1/4NW1/4
846' FNL
2005' FWL
LAT-40.40405°N
LONG-104.50093°W
PDOP: 1.1
ELEV: 4593'

160

LOHR 5
NW1/4NE1/4
1012' FNL
1531' FEL
LAT-40.40348°N
LONG-104.49482°W
PDOP: 2.1
ELEV: 4583'

161

LOHR 41-13
NE1/4NE1/4
722' FNL
714' FEL
LAT-40.40422°N
LONG-104.49169°W
PDOP: 1.3
ELEV: 4576'

162

LOHR 13-2
NW1/4NE1/4
591' FNL
2064' FEL
LAT-40.40467°N
LONG-104.49654°W
PDOP: 1.4
ELEV: 4584'

