

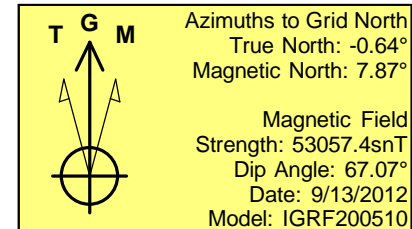
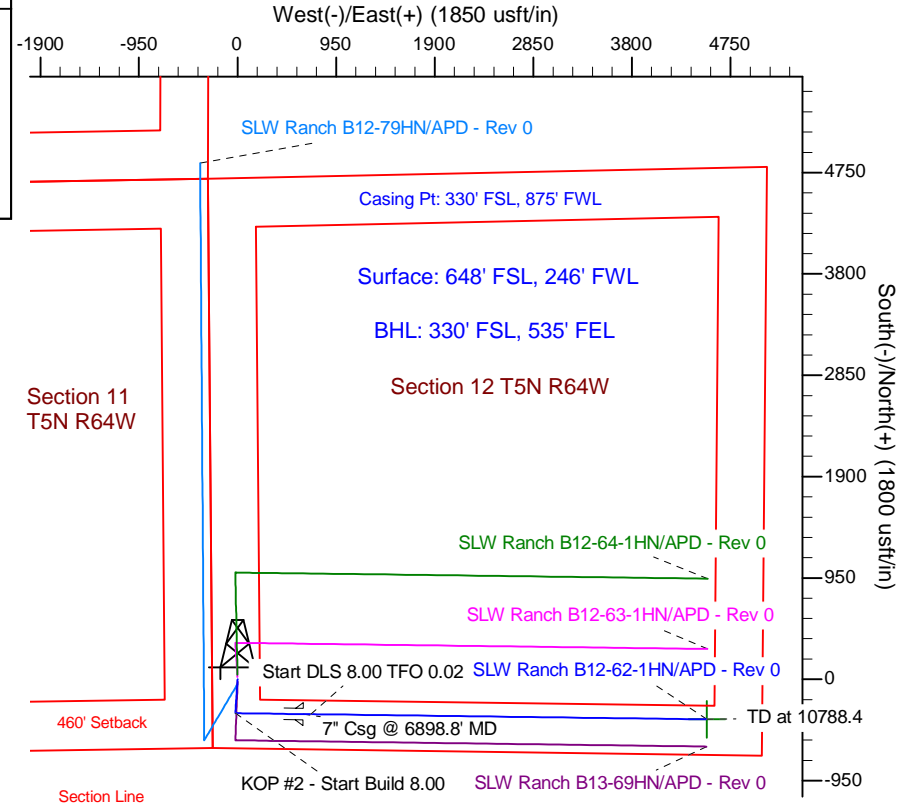
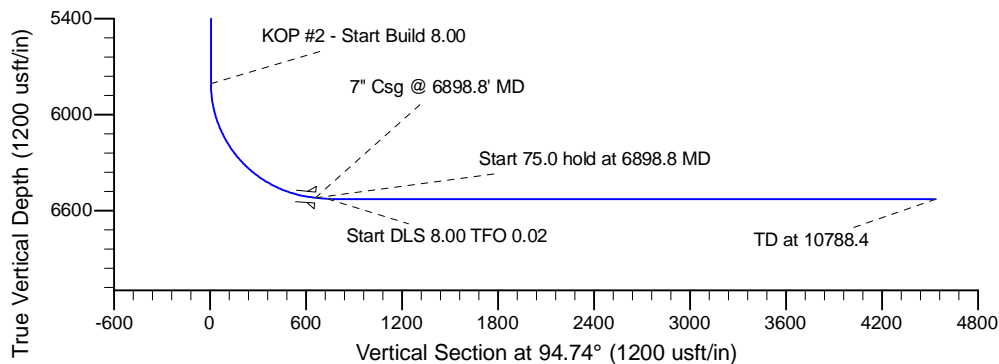
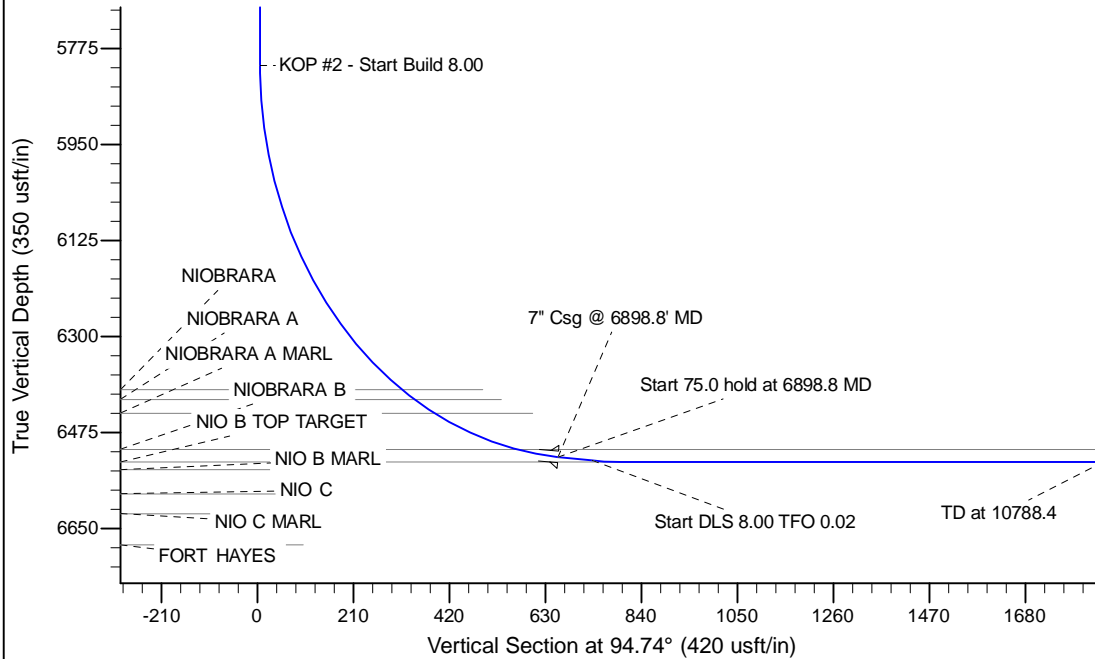
Project: Wattenberg Field
Site: B (Sec.12-T05N-R64W) Weld County, CO
Well: SLW Ranch B12-62-1HN
Wellbore: Original Drilling
Design: APD - Rev 0

Northern Region Drilling

Geodetic System: US State Plane 1983
Datum: North American Datum 1983
Ellipsoid: GRS 1980
Zone: Colorado Northern Zone
System Datum: Mean Sea Level

SECTION DETAILS

Sec	MD	Inc	Azi	TVD	+N/-S	+E/-W	Dleg	TFace	VSec	Target
1	0.0	0.00	0.00	0.0	0.0	0.0	0.00	0.00	0.0	
2	1800.0	0.00	0.00	1800.0	0.0	0.0	0.00	0.00	0.0	
3	2280.5	12.01	183.78	2277.0	-50.1	-3.3	2.50	183.78	0.8	
4	3329.5	12.01	183.78	3303.0	-267.9	-17.7	0.00	0.00	4.5	
5	3810.0	0.00	0.00	3780.0	-318.0	-21.0	2.50	180.00	5.4	
6	5836.3	0.00	0.00	5806.3	-318.0	-21.0	0.00	0.00	5.4	
7	6898.8	85.00	90.72	6519.8	-326.2	632.7	8.00	90.72	657.5	
8	6973.8	85.00	90.72	6526.3	-327.2	707.4	0.00	0.00	732.1	
9	7036.3	90.00	90.72	6529.0	-327.9	769.9	8.00	0.02	794.3	
10	10788.4	90.00	90.72	6529.0	-375.2	4521.6	0.00	0.00	4537.2	SLW Ranch B12-62-1HN BHI 330'FSL, 535'FEL



WELL DETAILS: SLW Ranch B12-62-1HN

Ground Level:	4596.0
Northing	1393120.63
Easting	3276451.65
Latitude	40.408270
Longitude	-104.507250

Plan: APD - Rev 0 (SLW Ranch B12-62-1HN/Original Drilling)

Created By:	Carrie Willers	Date:	17:33, September 25 2012
Checked:		Date:	
Reviewed:		Date:	
Approved:		Date:	