

**QUICKSILVER RESOURCES INC-EBUSINESS
DO NOT MAIL-801 CHERRY ST
FORT WORTH, Texas**

K-DIAMOND
K-DIAMOND 32-10

DHS/14

Post Job Summary **Cement Surface Casing**

Prepared for: 10/30/12
Date Prepared: Dustin Damme
Version: 1

Service Supervisor: FUCHS, ERIC

Submitted by: Chris Cicirello

HALLIBURTON

HALLIBURTON

Wellbore Geometry

Job Tubulars					MD		TVD		Excess	Shoe Joint Length
Type	Description	Size in	ID in	Wt lbm/ft	Top ft	Bottom ft	Top ft	Bottom ft	%	ft
Open Hole Section	Surface Open Hole		14.750		0.00	1,200.00				0.00
Casing	Surface Casing	11.75	11.084	42.00	0.00	1,200.00				40.00

Pumping Schedule

Stage /Plug #	Fluid #	Fluid Type	Fluid Name	Surface Density lbm/gal	Avg Rate bbl/min	Surface Volume	Downhole Volume
1	1	Spacer	Fresh Water	8.34	0.00	10.0 bbl	10.0 bbl
1	2	Spacer	SUPER FLUSH 101	10.00	0.00	20.0 bbl	20.0 bbl
1	3	Spacer	Fresh Water	8.34	0.00	10.0 bbl	10.0 bbl
1	4	Cement Slurry	VariCem V1	12.30		270.0 sacks	270.0 sacks
1	5	Cement Slurry	VariCem V1	13.50		265.0 sacks	265.0 sacks
1	6	Mud	Displacement	0.00	0.00	138.0 bbl	138.0 bbl
1	7	Cement Slurry	HalCem TopOut	15.80			138.0 bbl

HALLIBURTON

Service Supervisor Reports

Job Log

Date/Time	Activity Code	Pump Rate	Cum Vol	Pressure (psig)	Comments
10/04/2012 10:45	Call Out				Crew gets called out
10/04/2012 13:00	Depart from Service Center or Other Site				Crew leaves the yard
10/04/2012 17:00	Arrive At Loc				Crew arrives at location
10/04/2012 17:05	Comment				Rig not ready, they are moving slower than expected we will have to wait for a while to start rigging up
10/04/2012 17:10	Assessment Of Location Safety Meeting				Crew assesses location and goes over what they will do and the order they will do it in when they can rig up
10/04/2012 22:50	Pre-Rig Up Safety Meeting				Crew has pre rig up safety meeting
10/04/2012 23:00	Rig-Up Equipment				Crew rigs up
10/04/2012 23:40	Rig-Up Completed				Crew done rigging up
10/04/2012 23:45	Casing on Bottom				Casing on bottom rig going to circulate until casing crew is out of the way and we are rigged up. they are going to circulate the hole at 9 bpm
10/05/2012 01:00	Pre-Job Safety Meeting				Crew has safety meeting with rig crew and company rep
10/05/2012 02:02	Other	2	3	142.0	Fill lines with 3 bbls water
10/05/2012 02:03	Test Lines			3000.0	Test the surface lines to 3000 psi
10/05/2012 02:09	Pump Water	4	10	44.0	Pump 10 bbls fresh water
10/05/2012 02:10	Pump Spacer	4	20	93.0	Pump 20 bbls superflush 10#
10/05/2012 02:14	Pump Water	4	10	137.0	Pump 10 bbls fresh water
10/05/2012 02:19	Pump Lead Cement	6	110	47.0	Pump 110 bbls 270 sks lead cement 12.3# 2.28 yd 12.78 gal/sk
10/05/2012 02:25	Comment			107.0	Truck kicked out because the kick outs were set low and it happend twice
10/05/2012 02:46	Pump Tail Cement	6	83	82.0	Pump 83 bbls 265 sks tail cement 13.5 # 1.75 yd 8.83 gal/sk
10/05/2012 03:01	Shutdown			105.0	Shut down
10/05/2012 03:02	Drop Plug				Drop plug
10/05/2012 03:02	Comment				Clean cement out of pump truck
10/05/2012 03:05	Pump Displacement	6	138	66.0	Pump 138 bbls oil base mud 8.5 #
10/05/2012 03:08	Cement Returns to Surface			212.0	After only 10 bbls of displacement away we got cement to surface giving us 128 bbls of cement to surface
10/05/2012 03:34	Slow Rate			452.0	Slow rate to 3 bpm to bump the plug
10/05/2012 03:35	Bump Plug			791.0	Bump Plugged plug at 440 psi and went to 950 psi
10/05/2012 03:35	Shutdown				Shutdown
10/05/2012 03:37	Check Floats			158.0	Check floats and got half of a bbl back to the truck
10/05/2012 03:38	End Job			24.0	We had good returns through the whole job and when we bumped the plug the cement only dropped about 1 inch in 10 min so per company man we did not top out.

HALLIBURTON

Date/Time	Activity Code	Pump Rate	Cum Vol	Pressure (psig)	Comments
10/05/2012 03:50	Post-Job Safety Meeting (Pre Rig-Down)				Crew has post job safety meeting
10/05/2012 04:00	Rig-Down Equipment				Crew rigs down
10/05/2012 05:00	Rig-Down Completed				Crew done rigging down
10/05/2012 05:20	Pre-Convoy Safety Meeting				Crew has pre convoy safety meeting
10/05/2012 05:30	Depart Location for Service Center or Other Site				Crew departs location

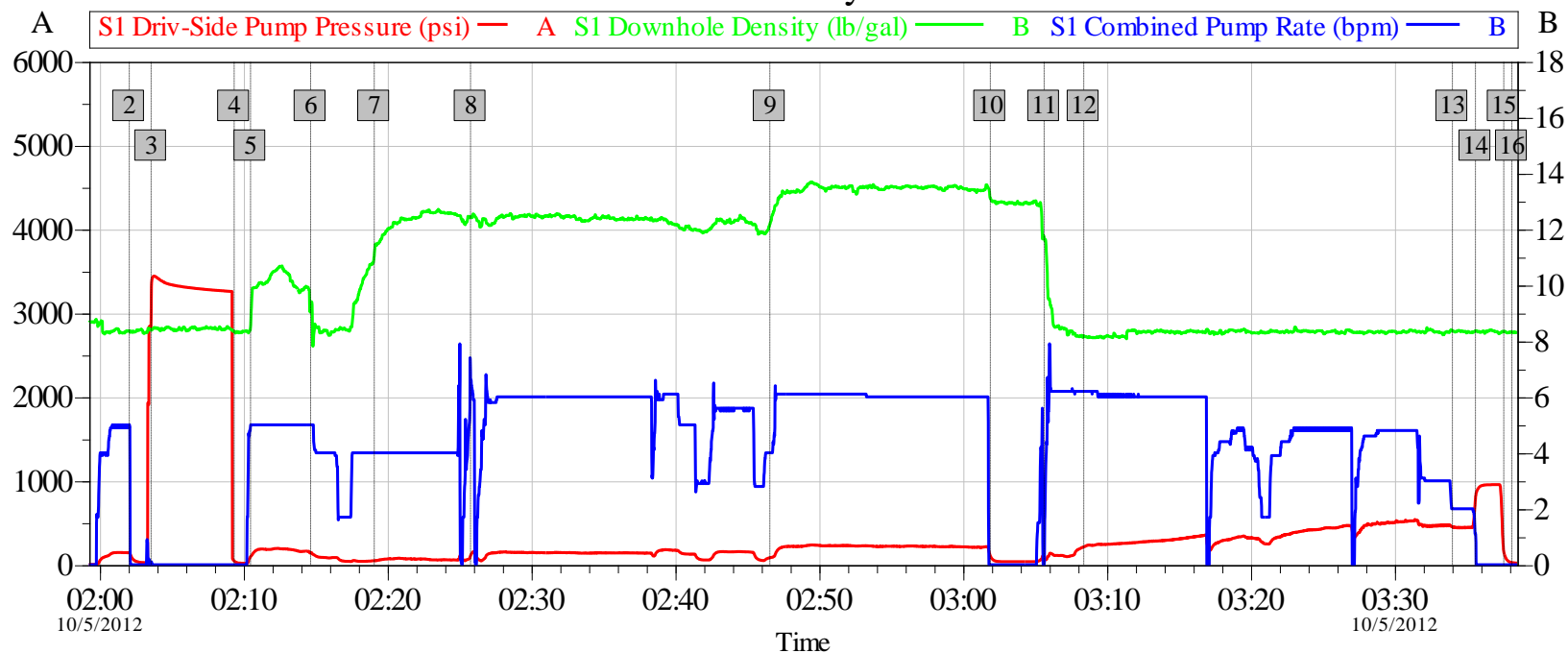
The Road to Excellence Starts with Safety

Sold To #: 346707		Ship To #: 2954766		Quote #:		Sales Order #: 9852172	
Customer: QUICKSILVER RESOURCES INC-EBUSINESS				Customer Rep:			
Well Name: K-DIAMOND			Well #: 32-10			API/UWI #:	
Field:		City (SAP): CRAIG		County/Parish: Moffat		State: Colorado	
Contractor: DHS			Rig/Platform Name/Num: 14				
Job Purpose: Cement Surface Casing							
Well Type: Exploratory / Wildcat				Job Type: Cement Surface Casing			
Sales Person: SCOTT, KYLE			Srvc Supervisor: FUCHS, ERIC			MBU ID Emp #: 471203	
Job Personnel							
HES Emp Name	Exp Hrs	Emp #	HES Emp Name	Exp Hrs	Emp #	HES Emp Name	Exp Hrs
CARPENTER, LANCE S	12.0	461737	FUCHS, ERIC James	12.0	471203	HAVILI, ETUATE S	12.0
PORTER, MICHAEL James	12.0	491145	VALLELY, SCOTT Lawrence	12.0	530611		
Equipment							
HES Unit #	Distance-1 way	HES Unit #	Distance-1 way	HES Unit #	Distance-1 way	HES Unit #	Distance-1 way
10265375	120 mile	10872113	120 mile	10991613	120 mile	11139326	120 mile
11277046	120 mile	11338215	120 mile	11526496	120 mile		
Job Hours							
Date	On Location Hours	Operating Hours	Date	On Location Hours	Operating Hours	Date	On Location Hours
10/4/12	7.0	0.0	10/5/12	5.5	1.75		
TOTAL		<i>Total is the sum of each column separately</i>					
Job				Job Times			
Formation Name				Date			
Formation Depth (MD) Top				Time			
Bottom				Time Zone			
Form Type				Called Out			
Job depth MD				On Location			
Water Depth				Job Started			
Perforation Depth (MD) From				Job Completed			
To				Departed Loc			
BHST				05 - Oct - 2012			
Job Depth TVD				05:30			
Wk Ht Above Floor				MST			
5. ft							
Well Data							
Description	New / Used	Size in	ID in	Weight lbm/ft	Grade	Top MD ft	Bottom MD ft
Surface Open Hole			14.75			.	1200.
Surface Casing	Unknown	11.75	11.084	42.	H-40	.	1200.
Tools and Accessories							
Type	Size	Qty	Make	Depth	Type	Size	Qty
Guide Shoe					Top Plug		
Float Shoe					Bottom Plug		
Float Collar					SSR plug set		
Insert Float					Plug Container		
Stage Tool					Centralizers		
Miscellaneous Materials							
Gelling Agt		Conc		Surfactant		Conc	
Treatment Fld		Conc		Inhibitor		Conc	
						Acid Type	
						Sand Type	
						Qty	
						Conc	
						Size	
						Qty	
						%	

Fluid Data									
Stage/Plug #: 1									
Fluid #	Stage Type	Fluid Name	Qty	Qty uom	Mixing Density lbm/gal	Yield ft ³ /sk	Mix Fluid Gal/sk	Rate bbl/min	Total Mix Fluid Gal/sk
1	Fresh Water		10.00	bbl	8.34	.0	.0	.0	
2	SUPER FLUSH 101	SUPER FLUSH 101 - SBM (12199)	20.00	bbl	10.	2.11	13.09	.0	
3	Fresh Water		10.00	bbl	8.34	.0	.0	.0	
4	VariCem V1	VARICEM (TM) CEMENT (452009)	270.0	sacks	12.3	2.28	12.78		12.78
0.125 lbm		POLY-E-FLAKE (101216940)							
5 lbm		KOL-SEAL, 50 LB BAG (100064232)							
12.78 Gal		FRESH WATER							
5	VariCem V1	VARICEM (TM) CEMENT (452009)	265.0	sacks	13.5	1.75	8.83		8.83
0.125 lbm		POLY-E-FLAKE (101216940)							
5 lbm		KOL-SEAL, 50 LB BAG (100064232)							
8.83 Gal		FRESH WATER							
6	Displacement		138.00	bbl	.			.0	
7	HalCem TopOut	HALCEM (TM) SYSTEM (452986)		sacks	15.8	1.2	5.2		5.2
2 %		CALCIUM CHLORIDE - HI TEST PELLET (100005053)							
5.2 Gal		FRESH WATER							
Calculated Values		Pressures		Volumes					
Displacement	138	Shut In: Instant		Lost Returns		Cement Slurry	192.2	Pad	
Top Of Cement	0	5 Min		Cement Returns	128	Actual Displacement	138	Treatment	
Frac Gradient		15 Min		Spacers	40	Load and Breakdown		Total Job	370.2
Rates									
Circulating	6	Mixing	6	Displacement	6	Avg. Job	6		
Cement Left In Pipe	Amount	40 ft	Reason	Shoe Joint					
Frac Ring # 1 @	ID	Frac ring # 2 @	ID	Frac Ring # 3 @	ID	Frac Ring # 4 @	ID		
The Information Stated Herein Is Correct				Customer Representative Signature					

Quicksilver DHS 14 K-Diamond 32-10

Job Summary Chart



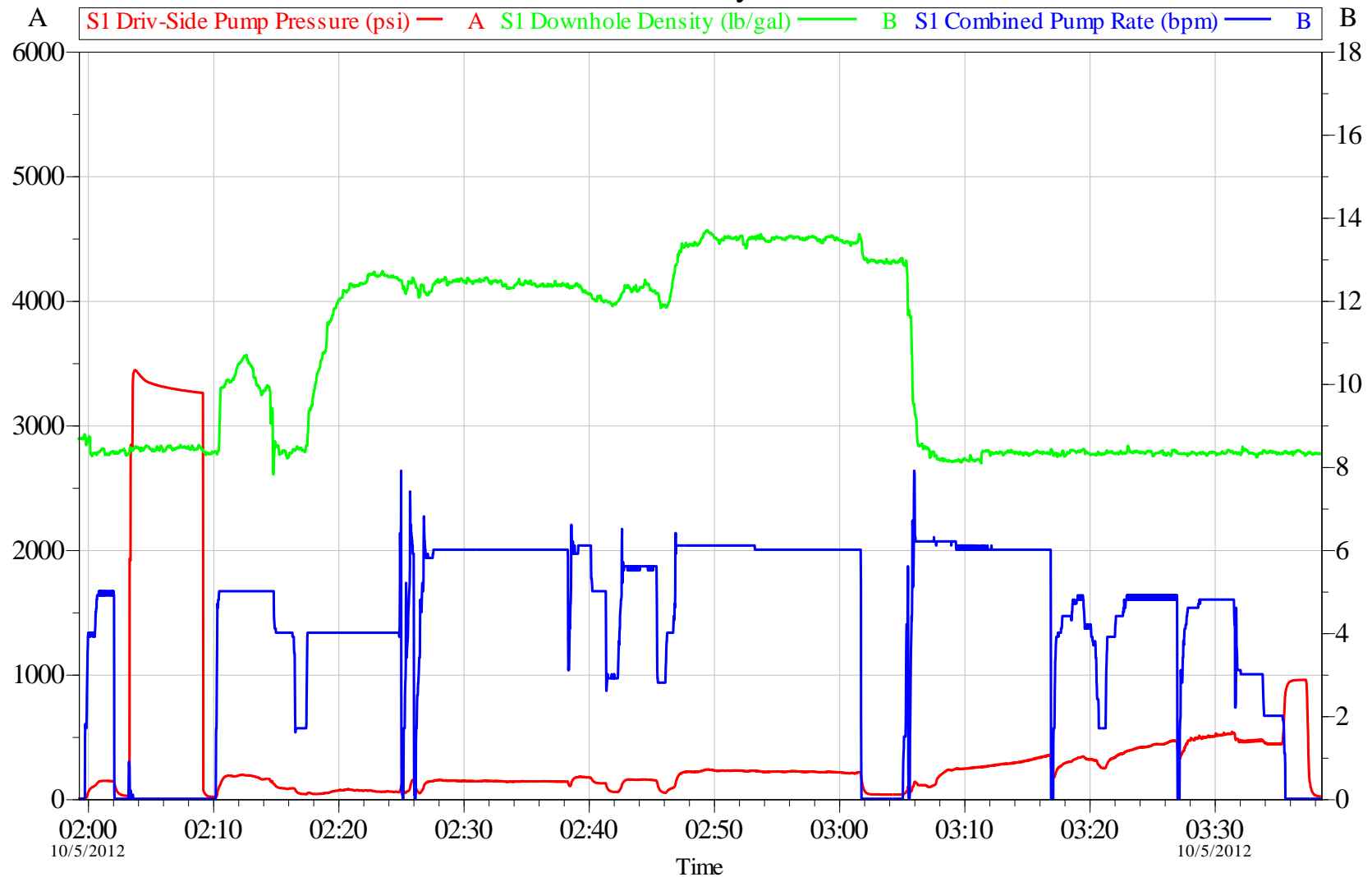
Global Event Log

Intersection	PSI	Intersection	PSI	Intersection	PSI
2 Fill Lines	02:02:04 142.0	3 Test Lines	02:03:36 2906	4 Pump Water	02:09:22 44.41
5 Pump Super Flush	02:10:30 93.58	6 Pump Water	02:14:41 137.1	7 Pump Lead Cement	02:19:06 47.00
8 Comment	02:25:48 107.5	9 Pump Tail Cement	02:46:35 82.02	10 Shutdown	03:01:55 105.7
11 Pump Displacement	03:05:39 66.17	12 Cement Returns to Surface	03:08:24 212.1	13 Slow Rate	03:34:02 452.9
14 Bump Plug	03:35:38 791.6	15 Check Floats	03:37:36 158.8	16 End Job	03:38:10 24.00

Customer: Quicksilver	Job Date: 04-Oct-2012	Sales Order #: 9852172
Well Description: K-Diamond 32-10	UWI:	Elite Number 10872113
Service Supervisor E. Fuchs	Service Operator M. Porter	Service Leader S. Carpenter

OptiCem v6.4.10
05-Oct-12 04:39

Quicksilver DHS 14 K-Diamond 32-10 Job Summary Chart



Customer: Quicksilver
Well Description: K-Diamond 32-10
Service Supervisor: E. Fuchs

Job Date: 04-Oct-2012
UWI:
Service Operator: M. Porter

Sales Order #: 9852172
Elite Number: 10872113
Service Leader: S. Carpenter

OptiCem v6.4.10
05-Oct-12 04:41

HALLIBURTON

Lab Data

HALLIBURTON

Cementing Rockies, Vernal

LAB RESULTS - Lead

Job Information

Request/Slurry	275323/1	Rig Name	DHS DRILLING #6	Date	28/SEP/2012
Submitted By	Craig Dube	Job Type	Surface Casing	Bulk Plant	Vernal
Customer	Quicksilver Resources Inc.	Location	Moffat	Well	K-DIAMOND 32-10

Well Information

Casing/Liner Size	9 5/8"	Depth MD	1200 ft	BHST	97 F
Hole Size	12 1/4"	Depth TVD	1200 ft	BHCT	82 F

Drilling Fluid Information

Mud Supplier Name		Mud Trade Name		Density	
-------------------	--	----------------	--	---------	--

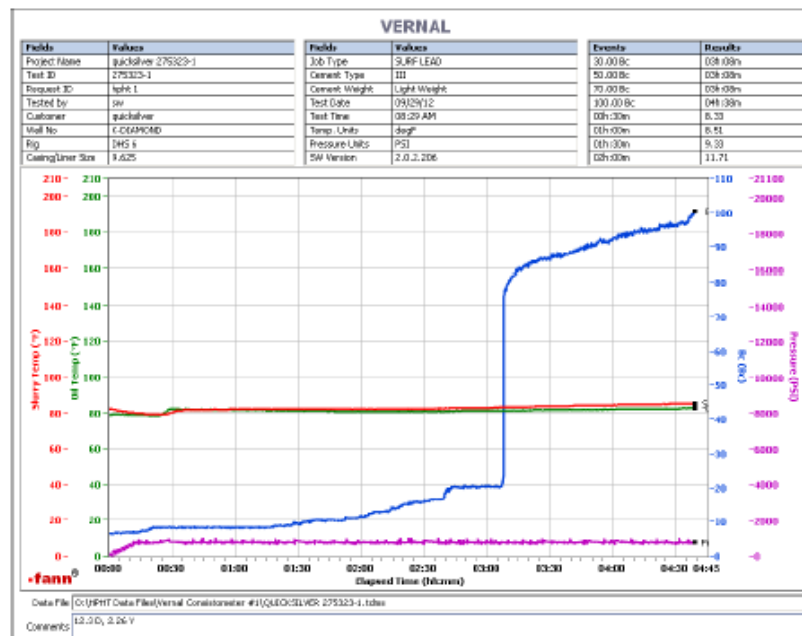
Cement Information - Lead Design

Conc	UOM	Cement/Additive	Type	Sample Date	Lot No.	Cement Properties		
		VariCem V1				Slurry Density	12.30	PPG
		Holcim Type III	Bulk	Sep 29, 2012	100012229	Slurry Yield	2.26	ft ³ /sk
100.00	% BWOC	Pol-E-Flake	Bulk	Sep 29, 2012	4/10/2012	Water Requirement	12.61	GPS
0.125	lb/sk	Kol-Seal	Bulk	Sep 29, 2012	8/22/2012	Total Mix Fluid	12.61	GPS
5.000	lb/sk	Field (Fresh) Water	Lab	Aug 23, 2012	8/23/12	Water Source	Field (Fresh) Water	
12.61	gal/sack					Water Chloride	N/A	ppm

Operation Test Results Request ID 275323/1

Thickening Time

Temp (°F)	Pressure (psi)	Reached in (min)	Start BC	30 Bc (hh:mm)	50 Bc (hh:mm)	70 Bc (hh:mm)	100 Bc (hh:mm)
82	798	14	7	03:08	03:08	03:08	04:38



This report is the property of Halliburton Energy Services and neither its nor any part hereof, nor a copy thereof, is to be published or disclosed without the express written approval of Halliburton. It may however be used in the course of regular business operations by any person or organization receiving a valid report from Halliburton. This report is for information purposes only and the content is limited to the sample described. Halliburton makes no warranties, expressed or implied, as to the accuracy of the contents or results. Any user of this report agrees Halliburton shall not be liable for any loss or damage regardless of cause, including any action on behalf of Halliburton, resulting from the use hereof.

HALLIBURTON

HALLIBURTON

Cementing Rockies, Vernal

LAB RESULTS - Tail

Job Information

Request/Slurry	275324/1	Rig Name	DHS DRILLING #6	Date	28/SEP/2012
Submitted By	Craig Dube	Job Type	Surface Casing	Bulk Plant	Vernal
Customer	Quicksilver Resources Inc.	Location	Moffat	Well	K-DIAMOND 32-10

Well Information

Casing/Liner Size	9.5/8"	Depth MD	1200 ft	BHST	97 F
Hole Size	12 1/4"	Depth TVD	1200 ft	BHCT	82 F

Drilling Fluid Information

Mud Supplier Name	Mud Trade Name	Density
-------------------	----------------	---------

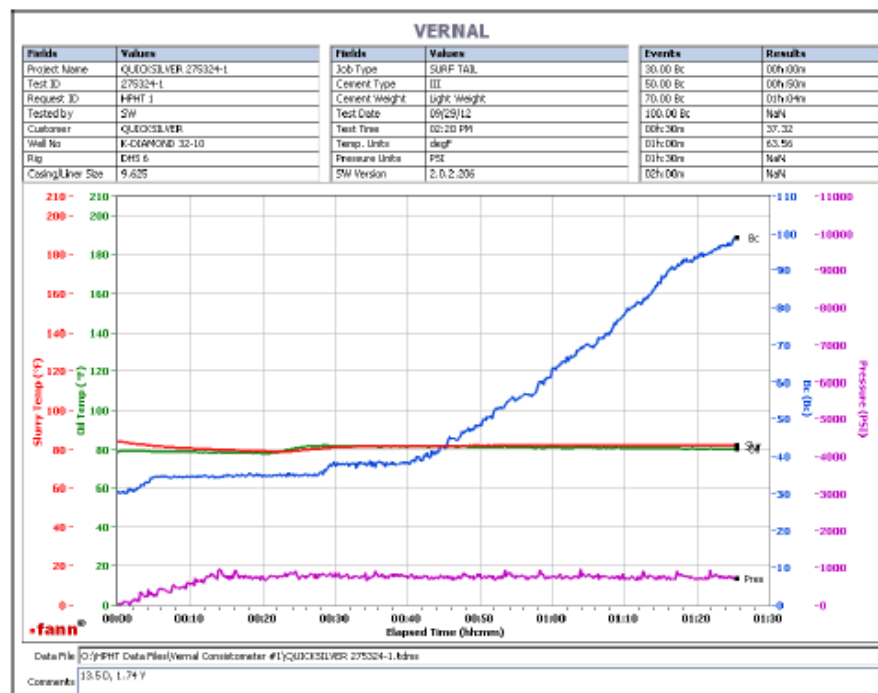
Cement Information - Tail Design

Conc	UOM	Cement/Additive	Type	Sample Date	Lot No.	Cement Properties		
		Varicem V1				Slurry Density	13.50	PPG
						Slurry Yield	1.74	ft ³ /sk
100.00	% BWOC	Cement Blend	Bulk	Sep 29, 2012		Water Requirement	8.68	GPS
0.125	lb/sk	Pol-E-Flake	Bulk	Sep 29, 2012	4/10/2012	Total Mix Fluid	8.68	GPS
5.000	lb/sk	Kol-Seal	Bulk	Sep 29, 2012	8/20/2012	Water Source	Field (Fresh) Water	
8.68	gal/sack	Field (Fresh) Water	Lab	Aug 23, 2012	8/23/12	Water Chloride	N/A	ppm

Operation Test Results Request ID 275324/1

Thickening Time

Temp (°F)	Pressure (psi)	Reached in (min)	Start BC	30 Bc (hh:mm)	50 Bc (hh:mm)	70 Bc (hh:mm)	Termination Time	Termination BC
82	798	14	30	00:00	00:50	01:04	01:25	99



This report is the property of Halliburton Energy Services and neither it nor any part thereof, nor a copy thereof, is to be published or disclosed without the express written approval of Halliburton. It may however be used in the course of regular business operations by any person or company receiving this report from Halliburton. This report is for information purposes only and the content is limited to the sample described. Halliburton makes no warranties, expressed or implied, as to the accuracy of the contents or results. Any user of this report agrees Halliburton shall not be liable for any loss or damage regardless of cause, including any action on the part of Halliburton, resulting from the use hereof.