
MINERAL RESOURCES INC

Poudre Trail 5 2-2-1

Weld County , Colorado

Cement Surface Casing

24-May-2012

Job Site Documents

The Road to Excellence Starts with Safety

Sold To #: 345252	Ship To #: 2929110	Quote #:	Sales Order #: 9539523
Customer: MINERAL RESOURCES INC		Customer Rep: Richardson, Collin	
Well Name: Poudre Trail 5	Well #: 2-2-1	API/UWI #:	
Field:	City (SAP): GREELEY	County/Parish: Weld	State: Colorado
Lat: N 40.431 deg. OR N 40 deg. 25 min. 50.736 secs.		Long: W 104.739 deg. OR W -105 deg. 15 min. 38.628 secs.	
Contractor: ??	Rig/Platform Name/Num: ??		
Job Purpose: Cement Surface Casing			
Well Type: Development Well		Job Type: Cement Surface Casing	
Sales Person: AARON, WESLEY		Srv Supervisor: ROSALES, MATTHEW	MBU ID Emp #: 392095

Job Personnel

HES Emp Name	Exp Hrs	Emp #	HES Emp Name	Exp Hrs	Emp #	HES Emp Name	Exp Hrs	Emp #
BANUELOS, GUADALUPE	7.5	372277	CORDOVA, PHILLIP Jared	7.5	519140	ROSALES, MATTHEW John	7.5	392095

Equipment

HES Unit #	Distance-1 way	HES Unit #	Distance-1 way	HES Unit #	Distance-1 way	HES Unit #	Distance-1 way
11036301	38 mile	11605598	38 mile	11812069C	38 mile		

Job Hours

Date	On Location Hours	Operating Hours	Date	On Location Hours	Operating Hours	Date	On Location Hours	Operating Hours
05/24/12	7.5	.75						
TOTAL			Total is the sum of each column separately					

Job

Formation Name	Formation Depth (MD)	Top	Bottom	Form Type	Job depth MD	Job Depth TVD	Water Depth	Perforation Depth (MD)	From	To
				BHST	524. ft	524. ft				
							Wk Ht Above Floor			

Job Times

Date	Time	Time Zone
24 - May - 2012	13:00	MST
24 - May - 2012	16:30	MST
24 - Jun - 2012	21:30	MST
24 - May - 2012	22:06	GMT
24 - May - 2012	23:00	MST

Well Data

Description	New / Used	Max pressure psig	Size in	ID in	Weight lbf/ft	Thread	Grade	Top MD ft	Bottom MD ft	Top TVD ft	Bottom TVD ft
12 1/4" Open Hole Section				12.25				.	524.		
8 5/8" Surface Casing	Unknown		8.625	8.097	24.			.	461.		

Tools and Accessories

Type	Size	Qty	Make	Depth	Type	Size	Qty	Make	Depth	Type	Size	Qty	Make
Guide Shoe					Packer					Top Plug			
Float Shoe					Bridge Plug					Bottom Plug			
Float Collar					Retainer					SSR plug set			
Insert Float										Plug Container			
Stage Tool										Centralizers			

Miscellaneous Materials

Gelling Agt	Conc	Surfactant	Conc	Acid Type	Qty	Conc	%
Treatment Fld	Conc	Inhibitor	Conc	Sand Type	Size		

Fluid Data

Stage/Plug #: 1									
Fluid #	Stage Type	Fluid Name	Qty	Qty uom	Mixing Density lbm/gal	Yield ft3/sk	Mix Fluid Gal/sk	Rate bbl/min	Total Mix Fluid Gal/sk

Stage/Plug #: 1

Stage/Plug #: 1									
Fluid #	Stage Type	Fluid Name	Qty	Qty uom	Mixing Density lbm/gal	Yield ft ³ /sk	Mix Fluid Gal/sk	Rate bbl/min	Total Mix Fluid Gal/sk
1	FRESH WATER SPACER		20.00	bbl	8.33	.0	.0	.0	
2	Fresh Water Spacer		10.00	bbl	8.33	.0	.0	.0	
3	SwiftCem B1	SWIFTCCEM (TM) SYSTEM (452990)	175.0	sacks	14.2	1.59	7.53		7.53
7.527 Gal		FRESH WATER							
Calculated Values		Pressures		Volumes					
Displacement	27.9	Shut In: Instant		Lost Returns	NO	Cement Slurry	47	Pad	30
Top Of Cement	SURFACE	5 Min		Cement Returns	8BBL	Actual Displacement	27.9	Treatment	
Frac Gradient		15 Min		Spacers	30BBL	Load and Breakdown		Total Job	104.9
Rates									
Circulating	4	Mixing	4	Displacement	4	Avg. Job			
Cement Left In Pipe	Amount	23 ft	Reason	Shoe Joint					
Frac Ring # 1 @	ID	Frac ring # 2 @	ID	Frac Ring # 3 @	ID	Frac Ring # 4 @	ID		
The Information Stated Herein Is Correct				Customer Representative Signature					

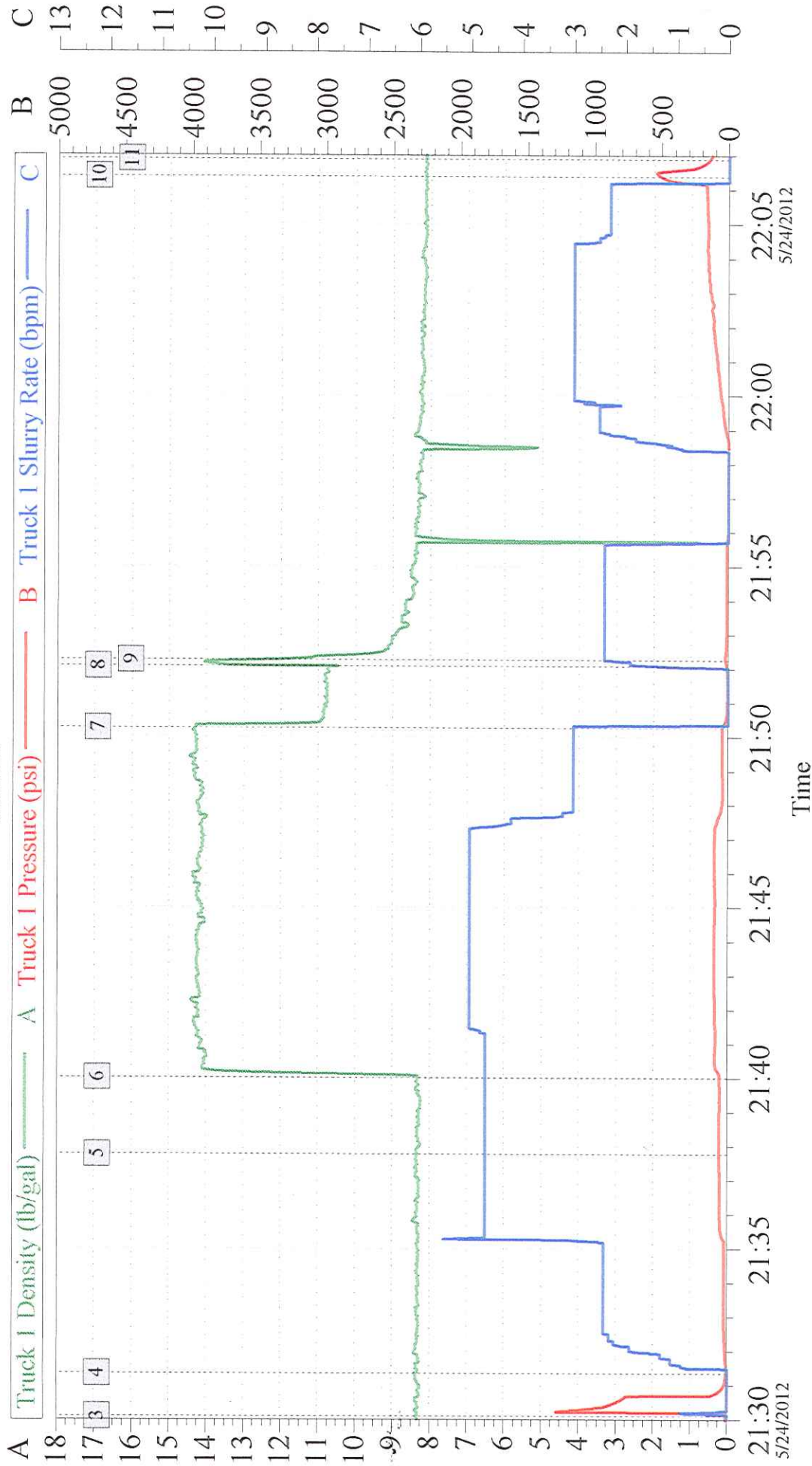
The Road to Excellence Starts with Safety

Sold To #: 345252		Ship To #: 2929110		Quote #:		Sales Order #: 9539523	
Customer: MINERAL RESOURCES INC				Customer Rep: Richardson, Collin			
Well Name: Poudre Trail 5			Well #: 2-2-1		API/UWI #:		
Field:		City (SAP): GREELEY		County/Parish: Weld		State: Colorado	
Legal Description:							
Lat: N 40.431 deg. OR N 40 deg. 25 min. 50.736 secs.				Long: W 104.739 deg. OR W -105 deg. 15 min. 38.628 secs.			
Contractor: ??			Rig/Platform Name/Num: ??				
Job Purpose: Cement Surface Casing						Ticket Amount:	
Well Type: Development Well				Job Type: Cement Surface Casing			
Sales Person: AARON, WESLEY				Srv Supervisor: ROSALES, MATTHEW/MBU ID Emp #: 392095			

Activity Description	Date/Time	Cht #	Rate bbl/min	Volume bbl		Pressure psig		Comments
				Stage	Total	Tubing	Casing	
Start Job	05/24/2012 21:30							
Test Lines	05/24/2012 21:30		0.5	0.5			1000.0	
Pump Spacer 1	05/24/2012 21:31		4	20			50.0	FRESH WATER SPACER
Pump Spacer 2	05/24/2012 21:37		5	10			75.0	FRESH WATER SPACER W/ DYE
Pump Cement	05/24/2012 21:40		5	47			125.0	SWIFTCM, 175SKS, 264.25CUFT, 1.51CUFT/SK, 7.53GAL/SK, 14.2#/GAL
Drop Top Plug	05/24/2012 21:52							PLUG PLELOADED WITNESSED BY COMPANY MAN
Pump Displacement	05/24/2012 21:52		4	27.9			200.0	FRESH WATER DISPLACE, WASH UP ON TOP OF PLUG
Bump Plug	05/24/2012 22:06						500.0	
Shut In Well	05/24/2012 22:06						130.0	8bbl CEMENT TO SURFACE
End Job	05/24/2012 22:07							

Mineral Resources - Poudre 5-2-1

Surface



Global Event Log

3 Test Lines	21:30:07	4 Fresh Water Spacer	21:31:22	5 Fresh Water Spacer w/Red Dye	21:37:46
6 Pump Cement 14.2#/gal	21:40:01	7 Shutdown	21:50:16	8 Drop Top Plug	21:52:04
9 Pump Displacement	21:52:15	10 Bump Plug	22:06:23	11 Shut In Well	22:06:54

Customer:	Mineral Resources	Job Date:	24-May-2012	Sales Order #:	9539523
Well Description:	Poudre 5-2-1	UWI:			
Halliburton Service Supervisor:	Matthew J. Rosales	Halliburton Operator:	Lupe Banuelos	Mineral Resources Customer Rep.:	Red Richardson