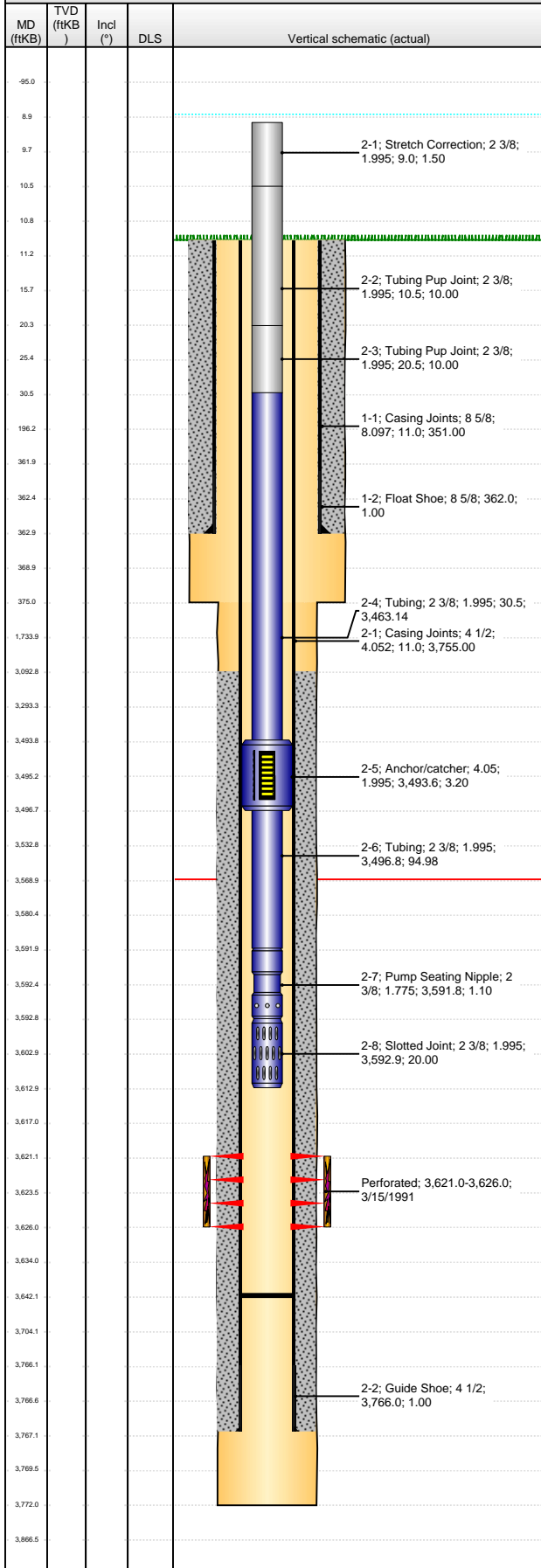


**Well Name: SWANSON FARMS 04-28EG**

VERTICAL - ORIGINAL HOLE, 12/4/2012 11:07:26 AM



## Well Header

API 05-123-14925	Business Unit WATTENBERG	District 15	Well Config VERTICAL
Original KB Elevation (ft) 4,710.00	KB - GL / MSL (ftKB) 11.00	Spud Date 3/1/1991	P & A Date

## Comment

Directions To Well  
WCR'S. 43 & 66 W .1 S. INTO

## Congressional Location

Quarter 1	Quarter 2	Quarter 3	Quarter 4	Section	Township	Twnshp N...	Range	Rng E/W Dir
		NE	NE	28	6	N	65	W

## Bottom Hole Location

North-South Distance (ft)	From N or S Line	East-West Distance (ft)	From E or W Line

## Plug Back Total Depths

Date	Depth (ftKB)	Method	Com
3/4/1991	3,657.0	TAG	
2/6/2009	3,642.0	TAG	SLICKLINE TAGGED.

## Wellbore Sections

Section Des	Size (in)	Act Top (ftKB)	Act Btm (ftKB)
SURFACE	12 1/4	11.0	375.0
PRODUCTION	7 7/8	375.0	3,772.0

## Zone Statuses

Zone Name	Status Date	Status	Job
PARKMAN	3/23/1991	PR	DRILLING/COMPLETION - ORIGINAL, 3/1/1991 00:00

## Casing Strings

### Surface, 363.0ftKB

Casing Description	Run Date	OD (in)	Wt/Len (l...	Grade	Top (ftKB)	Set Depth...
Surface	3/1/1991	8 5/8	24.00	K-55	11.0	363.0

### Production, 3,767.0ftKB

Casing Description	Run Date	OD (in)	Wt/Len (l...	Grade	Top (ftKB)	Set Depth...
Production	3/4/1991	4 1/2	10.50	K-55	11.0	3,767.0

## Cement

Description	Top Depth (ftKB)	Bottom Depth (ftKB)
SURFACE CASING CEMENT	11.0	363.0
PRODUCTION CASING CEMENT	3,093.0	3,767.0

## Tubing Components

Item Des	OD (in)	Wt (lb/ft)	Grade	Jts	Len (ft)	Btm (ftKB)	Btm (TVD) (ftKB)
Stretch Correction	2 3/8	4.70	J-55	1	1.50	10.5	
Tubing Pup Joint	2 3/8	4.70	J-55	1	10.00	20.5	
Tubing Pup Joint	2 3/8	4.70	J-55	1	10.00	30.5	
Tubing	2 3/8	4.70	J-55	110	3,463.14	3,493.6	
Anchor/catcher	4.052	4.70	J-55	1	3.20	3,496.8	
Tubing	2 3/8	4.70	J-55	3	94.98	3,591.8	
Pump Seating Nipple	2 3/8	4.70	N-80	1	1.10	3,592.9	
Slotted Joint	2 3/8	4.70	J-55	1	20.00	3,612.9	

## Perforation Data

Zone	Bnch/St g	Entered Shot Total	Top (ftKB)	Btm (ftKB)	Date
PARKMAN, ORIGINAL HOLE		6	3,621.00	3,626.00	3/15/1991

## Stimulations & Treatments

Date	Zone	Primary Job Type
4/17/1991	PARKMAN, ORIGINAL HOLE	DRILLING/COMPLETION - ORIGINAL
Technical Result	Tech Result Details	Tech Result Note
Comment		

## Other In Hole

Run Date	Des	OD (in)	Top (ftKB)	Btm (ftKB)

## Logs

Date	Type	Top (ftKB)	Btm (ftKB)
3/3/1991	COMPENSATED DENSITY	3,157.0	3,770.0
3/14/1991	CBL/CCL/GR	3,157.0	3,770.0