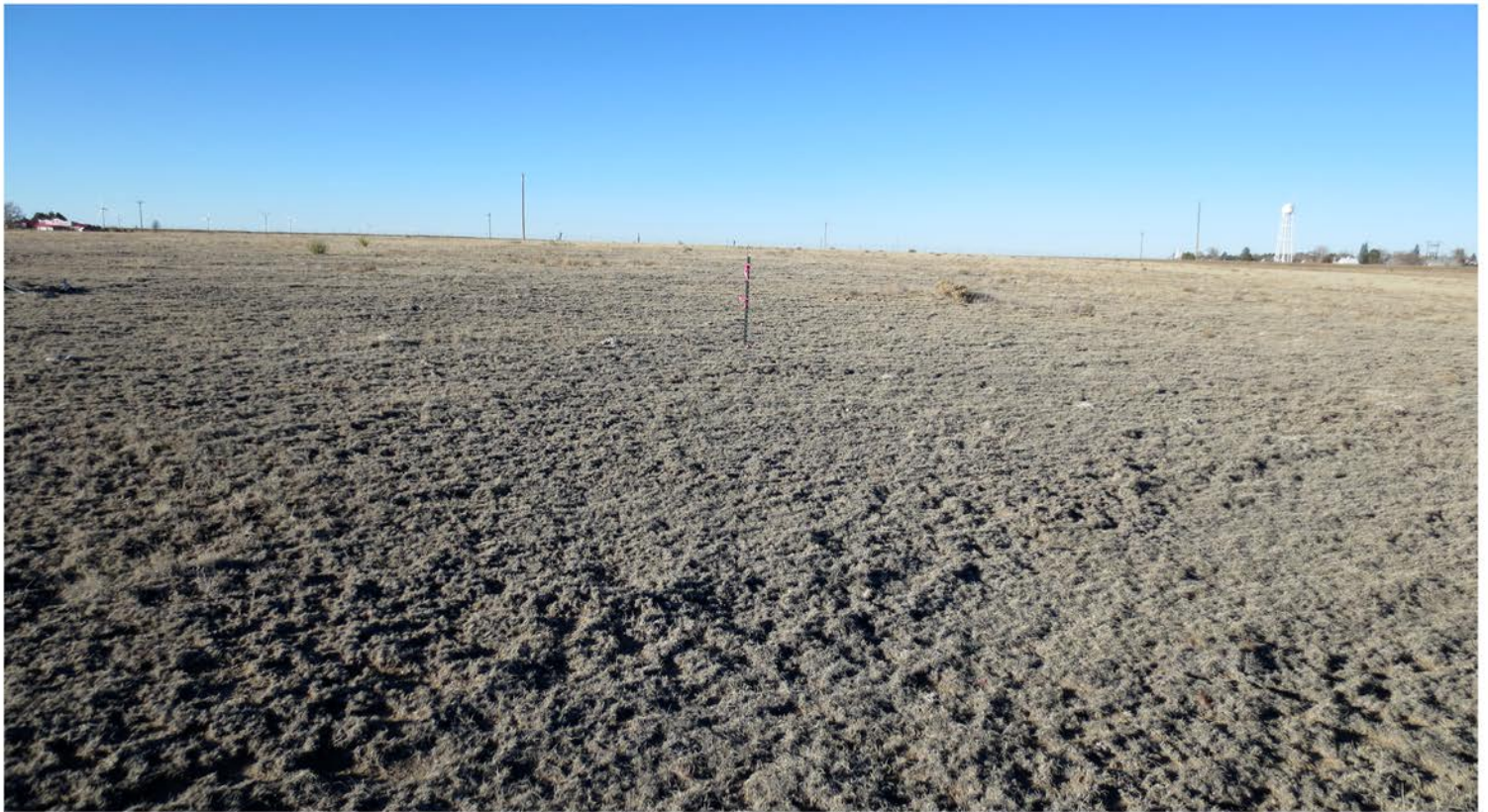
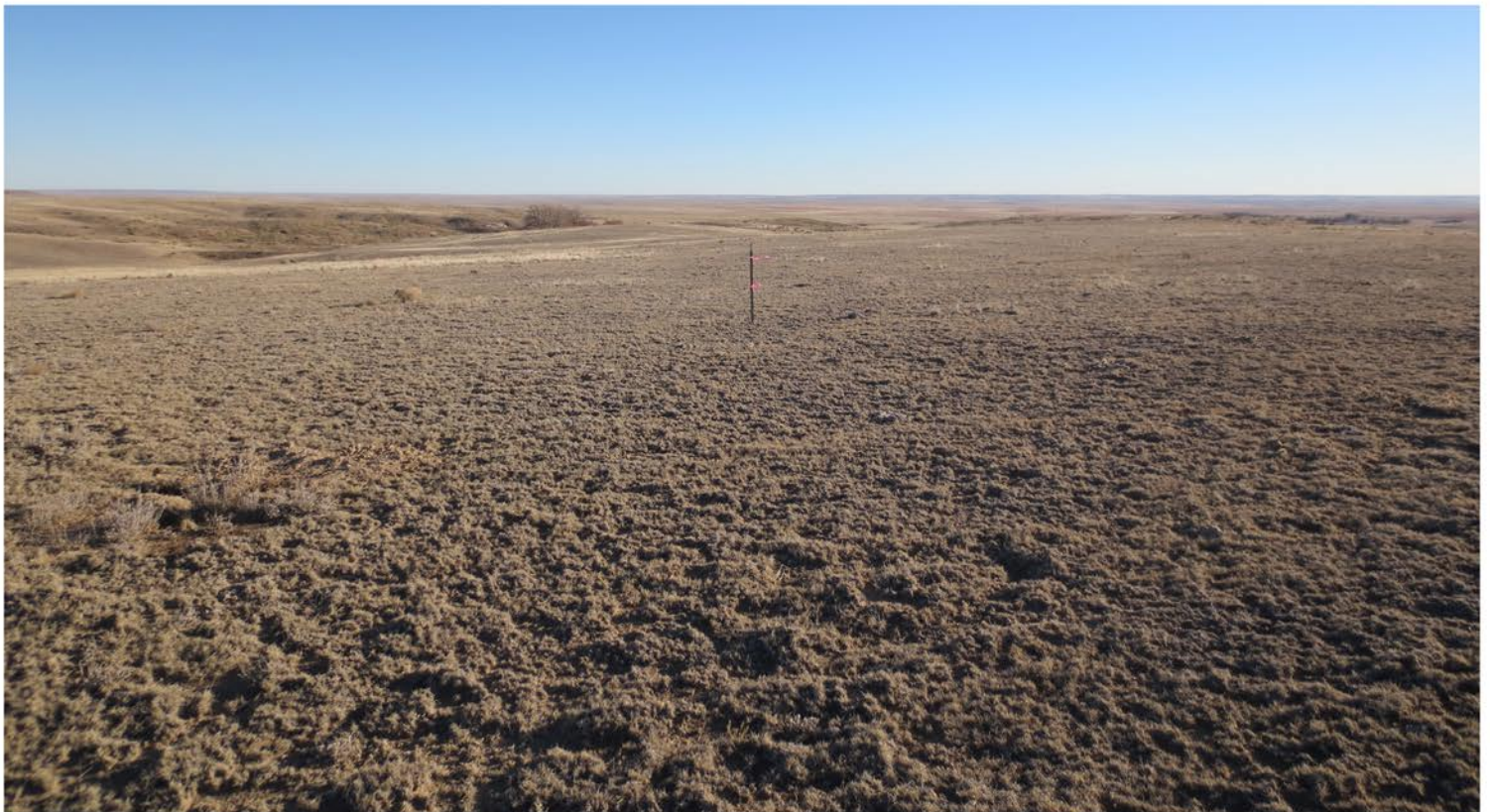


FISHER 13-9S-55W-01H
SEC 13, T9S, R55W, 6TH PM, LINCOLN COUNTY, COLORADO
LOCATION PHOTOS - NOVEMBER 13, 2012



WELL PAD VIEW (LOOKING NORTH)



WELL PAD VIEW (LOOKING SOUTH)

FISHER 13-9S-55W-01H
SEC 13, T9S, R55W, 6TH PM, LINCOLN COUNTY, COLORADO
LOCATION PHOTOS - NOVEMBER 13, 2012



WELL PAD VIEW (LOOKING EAST)



WELL PAD VIEW (LOOKING WEST)