

# KERR-MCGEE OIL & GAS ONSHORE LP

Location: COLORADO Slot: SLOT#58 GOBBLER 13C-23HZ (466'FNL & 279'FEL,SEC.22)  
Field: WELD COUNTY (KERR MCGEE) Well: GOBBLER 13C-23HZ  
Facility: SEC.22-T2N-R66W Wellbore: GOBBLER 13C-23HZ PWB

Plot reference wellpath is GOBBLER 13C-23HZ (PERMIT REV-2) PWP

True vertical depths are referenced to XTREME 6 (RKB)	Grid System: NAD83 / Lambert Colorado SP, Northern Zone (501), US feet
Measured depths are referenced to XTREME 6 (RKB)	North Reference: True north
XTREME 6 (RKB) to Mean Sea Level: 5102 feet	Scale: True distance
Mean Sea Level to Mud line (At Slot: SLOT#58 GOBBLER 13C-23HZ (466'FNL & 279'FEL,SEC.22)): 0 feet	Depths are in feet
Coordinates are in feet referenced to Slot	Created by: wilajet02 on 11/6/2012

## Location Information

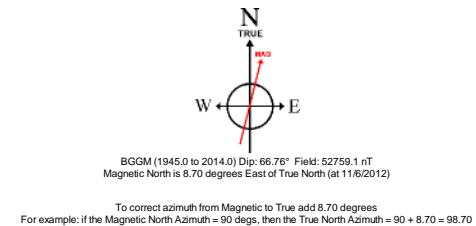
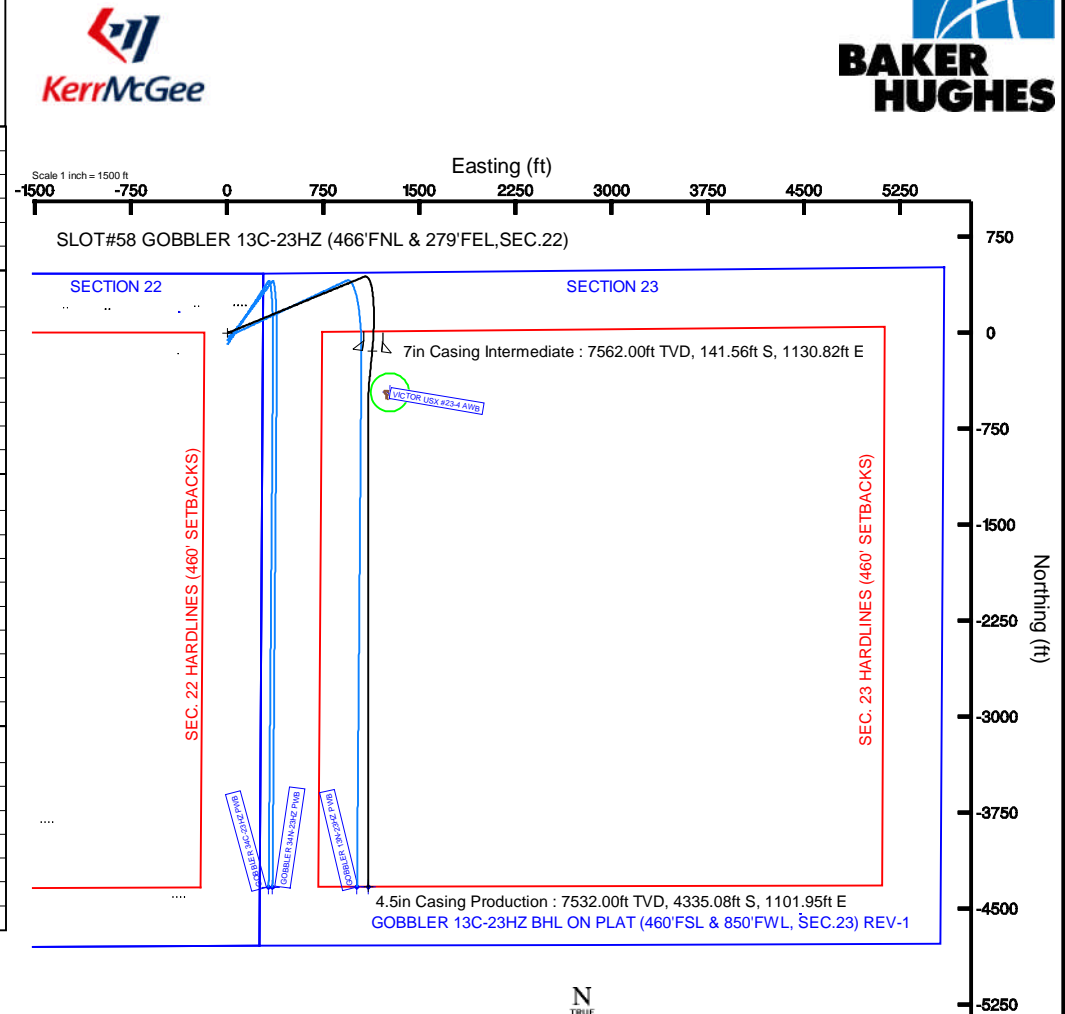
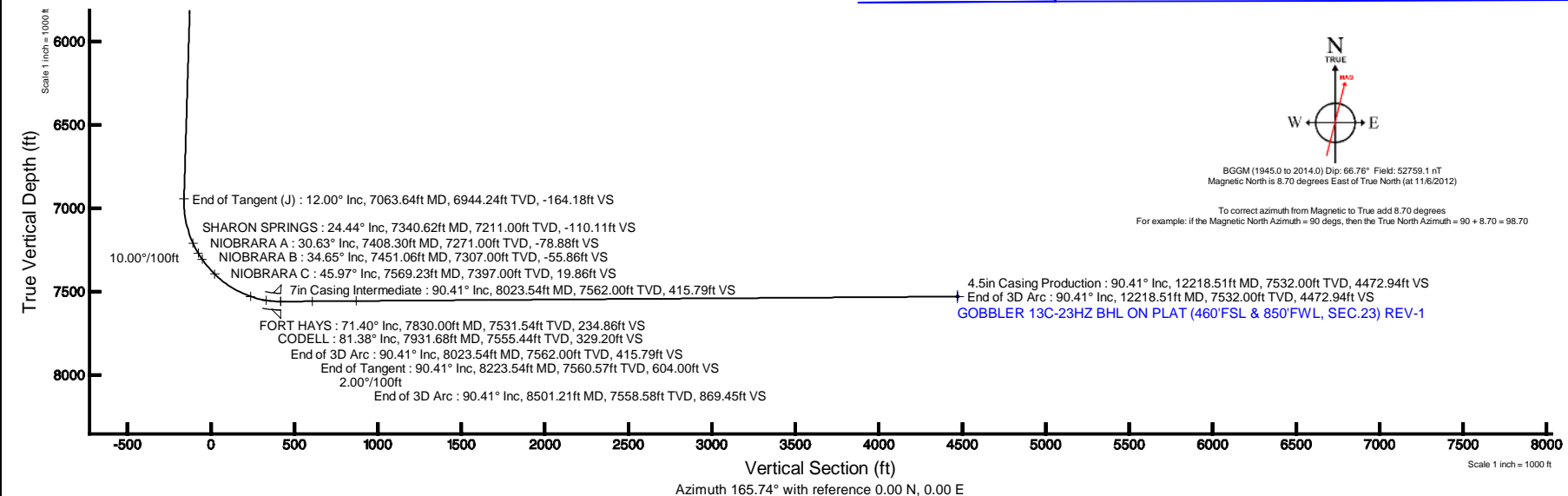
Facility Name			Grid East (US ft)	Grid North (US ft)	Latitude	Longitude
SEC.22-T2N-R66W			3203800.977	1290888.675	40°07'46.600"N	104°46'16.122"W
Slot	Local N (ft)	Local E (ft)	Grid East (US ft)	Grid North (US ft)	Latitude	Longitude
SLOT#58 GOBBLER 13C-23HZ (466'FNL & 279'FEL,SEC.22)	6.18	4544.04	3208344.615	1290942.206	40°07'46.657"N	104°45'17.622"W
XTREME 6 (RKB) to Mud line (At Slot: SLOT#58 GOBBLER 13C-23HZ (466'FNL & 279'FEL,SEC.22))						5102ft
Mean Sea Level to Mud line (At Slot: SLOT#58 GOBBLER 13C-23HZ (466'FNL & 279'FEL,SEC.22))						0ft
XTREME 6 (RKB) to Mean Sea Level						5102ft

## Well Profile Data

Design Comment	MD (ft)	Inc (°)	Az (°)	TVD (ft)	Local N (ft)	Local E (ft)	DLS (°/100ft)	VS (ft)
Tie On	17.00	0.000	67.580	17.00	0.00	0.00	0.00	0.00
End of Tangent	1200.00	0.000	67.580	1200.00	0.00	0.00	0.00	0.00
End of Build (J)	1800.00	12.000	67.580	1795.62	23.88	57.87	2.00	-8.88
End of Tangent (J)	7063.64	12.000	67.580	6944.24	441.26	1069.52	0.00	-164.18
End of 3D Arc	8023.54	90.410	185.500	7562.00	-141.56	1130.82	10.00	415.79
End of Tangent	8223.54	90.410	185.500	7560.57	-340.64	1111.66	0.00	604.00
End of 3D Arc	8501.21	90.410	179.946	7558.58	-617.88	1098.47	2.00	869.45
End of 3D Arc	12218.51	90.410	179.946	7532.00	-4335.08	1101.95	0.00	4472.94

## Targets

Name	MD (ft)	TVD (ft)	Local N (ft)	Local E (ft)	Grid East (US ft)	Grid North (US ft)	Latitude	Longitude
GOBBLER 1N-23HZ1N-23HZ1C-23HZ SECTION LINES		-1.00	-4544.88	4471.84	3212854.29	1286435.25	40°07'01.740"N	104°44'20.662"W
GOBBLER SECTION 22	32.00	65.66	-1820.97	3206523.24	1290992.56	40°07'47.305"N	104°45'41.065"W	
GOBBLER 1N-23HZ1C-23HZ HARDLINES (460' SETBACKS)		7235.00	-4544.88	4471.84	3212854.29	1286435.25	40°07'01.740"N	104°44'20.662"W
GOBBLER HARDLINES (460' SETBACKS)		7432.00	65.66	-1820.97	3206523.24	1290992.56	40°07'47.305"N	104°45'41.065"W
GOBBLER 13C-23HZ BHL ON PLAT (460'FSL & 850'FWL, SEC.23) REV-1	12218.51	7532.00	-4335.08	1101.95	3209492.90	1286616.72	40°07'03.817"N	104°45'03.438"W
VICTOR USX#23-4	7560.00	-464.34	1268.55	3209616.97	1290488.56	40°07'42.068"N	104°45'01.291"W	





# Planned Wellpath Report

GOBBLER 13C-23HZ (PERMIT REV-2) PWP

Page 1 of 6



REFERENCE WELLPATH IDENTIFICATION			
Operator	KERR-MCGEE OIL & GAS ONSHORE LP	Slot	SLOT#58 GOBBLER 13C-23HZ (466'FNL & 279'FEL,SEC.22)
Area	COLORADO	Well	GOBBLER 13C-23HZ
Field	WELD COUNTY (KERR MCGEE)	Wellbore	GOBBLER 13C-23HZ PWB
Facility	SEC.22-T2N-R66W		

REPORT SETUP INFORMATION			
Projection System	NAD83 / Lambert Colorado SP, Northern Zone (501), US feet	Software System	WellArchitect® 3.0.2
North Reference	True	User	Wilsjef02
Scale	0.999959	Report Generated	11/6/2012 at 07:56:56
Convergence at slot	0.48° East	Database/Source file	WellArchitectDB/GOBBLER_13C-23HZ_PWB.xml

WELLPATH LOCATION						
	Local coordinates		Grid coordinates		Geographic coordinates	
	North[ft]	East[ft]	Easting[US ft]	Northing[US ft]	Latitude	Longitude
Slot Location	6.18	4544.04	3208344.62	1290942.21	40°07'46.657"N	104°45'17.622"W
Facility Reference Pt			3203800.98	1290898.68	40°07'46.600"N	104°46'16.122"W
Field Reference Pt			3197771.84	1268891.29	40°04'09.600"N	104°47'36.000"W

WELLPATH DATUM			
Calculation method	Minimum curvature	XTREME 6 (RKB) to Facility Vertical Datum	5102.00ft
Horizontal Reference Pt	Slot	XTREME 6 (RKB) to Mean Sea Level	5102.00ft
Vertical Reference Pt	XTREME 6 (RKB)	XTREME 6 (RKB) to Mud Line at Slot (SLOT#58 GOBBLER 13C-23HZ (466'FNL & 279'FEL,SEC.22))	5102.00ft
MD Reference Pt	XTREME 6 (RKB)	Section Origin	N 0.00, E 0.00 ft
Field Vertical Reference	Mean Sea Level	Section Azimuth	165.74°



# Planned Wellpath Report

GOBBLER 13C-23HZ (PERMIT REV-2) PWP

Page 2 of 6



## REFERENCE WELLPATH IDENTIFICATION

Operator	KERR-MCGEE OIL & GAS ONSHORE LP	Slot	SLOT#58 GOBBLER 13C-23HZ (466'FNL & 279'FEL,SEC.22)
Area	COLORADO	Well	GOBBLER 13C-23HZ
Field	WELD COUNTY (KERR MCGEE)	Wellbore	GOBBLER 13C-23HZ PWB
Facility	SEC.22-T2N-R66W		

## WELLPATH DATA (139 stations) † = interpolated/extrapolated station

MD [ft]	Inclination [°]	Azimuth [°]	TVD [ft]	Vert Sect [ft]	North [ft]	East [ft]	Latitude	Longitude	DLS [°/100ft]	Comments
0.00†	0.000	67.580	0.00	0.00	0.00	0.00	40°07'46.657"N	104°45'17.622"W	0.00	
17.00	0.000	67.580	17.00	0.00	0.00	0.00	40°07'46.657"N	104°45'17.622"W	0.00	Tie On
117.00†	0.000	67.580	117.00	0.00	0.00	0.00	40°07'46.657"N	104°45'17.622"W	0.00	
217.00†	0.000	67.580	217.00	0.00	0.00	0.00	40°07'46.657"N	104°45'17.622"W	0.00	
317.00†	0.000	67.580	317.00	0.00	0.00	0.00	40°07'46.657"N	104°45'17.622"W	0.00	
417.00†	0.000	67.580	417.00	0.00	0.00	0.00	40°07'46.657"N	104°45'17.622"W	0.00	
517.00†	0.000	67.580	517.00	0.00	0.00	0.00	40°07'46.657"N	104°45'17.622"W	0.00	
617.00†	0.000	67.580	617.00	0.00	0.00	0.00	40°07'46.657"N	104°45'17.622"W	0.00	
717.00†	0.000	67.580	717.00	0.00	0.00	0.00	40°07'46.657"N	104°45'17.622"W	0.00	
817.00†	0.000	67.580	817.00	0.00	0.00	0.00	40°07'46.657"N	104°45'17.622"W	0.00	
917.00†	0.000	67.580	917.00	0.00	0.00	0.00	40°07'46.657"N	104°45'17.622"W	0.00	
1017.00†	0.000	67.580	1017.00	0.00	0.00	0.00	40°07'46.657"N	104°45'17.622"W	0.00	
1117.00†	0.000	67.580	1117.00	0.00	0.00	0.00	40°07'46.657"N	104°45'17.622"W	0.00	
1200.00	0.000	67.580	1200.00	0.00	0.00	0.00	40°07'46.657"N	104°45'17.622"W	0.00	End of Tangent
1217.00†	0.340	67.580	1217.00	-0.01	0.02	0.05	40°07'46.657"N	104°45'17.621"W	2.00	
1317.00†	2.340	67.580	1316.97	-0.34	0.91	2.21	40°07'46.666"N	104°45'17.594"W	2.00	
1417.00†	4.340	67.580	1416.79	-1.17	3.13	7.59	40°07'46.688"N	104°45'17.524"W	2.00	
1517.00†	6.340	67.580	1516.35	-2.49	6.68	16.20	40°07'46.723"N	104°45'17.413"W	2.00	
1617.00†	8.340	67.580	1615.53	-4.30	11.55	28.01	40°07'46.771"N	104°45'17.261"W	2.00	
1717.00†	10.340	67.580	1714.20	-6.60	17.74	43.01	40°07'46.832"N	104°45'17.068"W	2.00	
1800.00	12.000	67.580	1795.62	-8.88	23.88	57.87	40°07'46.893"N	104°45'16.877"W	2.00	End of Build (J)
1817.00†	12.000	67.580	1812.25	-9.38	25.22	61.14	40°07'46.906"N	104°45'16.835"W	0.00	
1917.00†	12.000	67.580	1910.07	-12.34	33.15	80.36	40°07'46.985"N	104°45'16.587"W	0.00	
2017.00†	12.000	67.580	2007.88	-15.29	41.08	99.58	40°07'47.063"N	104°45'16.340"W	0.00	
2117.00†	12.000	67.580	2105.70	-18.24	49.01	118.80	40°07'47.141"N	104°45'16.093"W	0.00	
2217.00†	12.000	67.580	2203.51	-21.19	56.94	138.02	40°07'47.220"N	104°45'15.845"W	0.00	
2317.00†	12.000	67.580	2301.33	-24.14	64.87	157.24	40°07'47.298"N	104°45'15.598"W	0.00	
2417.00†	12.000	67.580	2399.14	-27.09	72.80	176.46	40°07'47.376"N	104°45'15.350"W	0.00	
2517.00†	12.000	67.580	2496.95	-30.04	80.73	195.68	40°07'47.455"N	104°45'15.103"W	0.00	
2617.00†	12.000	67.580	2594.77	-32.99	88.66	214.89	40°07'47.533"N	104°45'14.855"W	0.00	
2717.00†	12.000	67.580	2692.58	-35.94	96.59	234.11	40°07'47.612"N	104°45'14.608"W	0.00	
2817.00†	12.000	67.580	2790.40	-38.89	104.52	253.33	40°07'47.690"N	104°45'14.361"W	0.00	
2917.00†	12.000	67.580	2888.21	-41.84	112.45	272.55	40°07'47.768"N	104°45'14.113"W	0.00	
3017.00†	12.000	67.580	2986.03	-44.79	120.38	291.77	40°07'47.847"N	104°45'13.866"W	0.00	
3117.00†	12.000	67.580	3083.84	-47.74	128.31	310.99	40°07'47.925"N	104°45'13.618"W	0.00	
3217.00†	12.000	67.580	3181.66	-50.69	136.24	330.21	40°07'48.003"N	104°45'13.371"W	0.00	
3317.00†	12.000	67.580	3279.47	-53.64	144.17	349.43	40°07'48.082"N	104°45'13.123"W	0.00	
3417.00†	12.000	67.580	3377.29	-56.59	152.10	368.65	40°07'48.160"N	104°45'12.876"W	0.00	
3517.00†	12.000	67.580	3475.10	-59.54	160.03	387.87	40°07'48.238"N	104°45'12.629"W	0.00	
3617.00†	12.000	67.580	3572.92	-62.49	167.96	407.09	40°07'48.317"N	104°45'12.381"W	0.00	
3717.00†	12.000	67.580	3670.73	-65.44	175.89	426.31	40°07'48.395"N	104°45'12.134"W	0.00	
3817.00†	12.000	67.580	3768.55	-68.39	183.82	445.53	40°07'48.473"N	104°45'11.886"W	0.00	
3917.00†	12.000	67.580	3866.36	-71.34	191.75	464.75	40°07'48.552"N	104°45'11.639"W	0.00	
4017.00†	12.000	67.580	3964.18	-74.29	199.68	483.97	40°07'48.630"N	104°45'11.391"W	0.00	
4117.00†	12.000	67.580	4061.99	-77.24	207.61	503.19	40°07'48.709"N	104°45'11.144"W	0.00	



# Planned Wellpath Report

GOBBLER 13C-23HZ (PERMIT REV-2) PWP

Page 3 of 6



REFERENCE WELLPATH IDENTIFICATION			
Operator	KERR-MCGEE OIL & GAS ONSHORE LP	Slot	SLOT#58 GOBBLER 13C-23HZ (466'FNL & 279'FEL,SEC.22)
Area	COLORADO	Well	GOBBLER 13C-23HZ
Field	WELD COUNTY (KERR MCGEE)	Wellbore	GOBBLER 13C-23HZ PWB
Facility	SEC.22-T2N-R66W		

WELLPATH DATA (139 stations) † = interpolated/extrapolated station										
MD [ft]	Inclination [°]	Azimuth [°]	TVD [ft]	Vert Sect [ft]	North [ft]	East [ft]	Latitude	Longitude	DLS [°/100ft]	Comments
4217.00†	12.000	67.580	4159.81	-80.19	215.53	522.41	40°07'48.787"N	104°45'10.896"W	0.00	
4317.00†	12.000	67.580	4257.62	-83.14	223.46	541.63	40°07'48.865"N	104°45'10.649"W	0.00	
4356.24†	12.000	67.580	4296.00	-84.30	226.58	549.17	40°07'48.896"N	104°45'10.552"W	0.00	PARKMAN
4417.00†	12.000	67.580	4355.44	-86.09	231.39	560.85	40°07'48.944"N	104°45'10.402"W	0.00	
4517.00†	12.000	67.580	4453.25	-89.04	239.32	580.07	40°07'49.022"N	104°45'10.154"W	0.00	
4617.00†	12.000	67.580	4551.06	-91.99	247.25	599.29	40°07'49.100"N	104°45'09.907"W	0.00	
4717.00†	12.000	67.580	4648.88	-94.94	255.18	618.51	40°07'49.179"N	104°45'09.659"W	0.00	
4740.64†	12.000	67.580	4672.00	-95.64	257.06	623.05	40°07'49.197"N	104°45'09.601"W	0.00	SUSSEX
4817.00†	12.000	67.580	4746.69	-97.89	263.11	637.73	40°07'49.257"N	104°45'09.412"W	0.00	
4917.00†	12.000	67.580	4844.51	-100.84	271.04	656.95	40°07'49.335"N	104°45'09.164"W	0.00	
5017.00†	12.000	67.580	4942.32	-103.79	278.97	676.17	40°07'49.414"N	104°45'08.917"W	0.00	
5117.00†	12.000	67.580	5040.14	-106.74	286.90	695.39	40°07'49.492"N	104°45'08.669"W	0.00	
5217.00†	12.000	67.580	5137.95	-109.69	294.83	714.61	40°07'49.570"N	104°45'08.422"W	0.00	
5317.00†	12.000	67.580	5235.77	-112.65	302.76	733.82	40°07'49.649"N	104°45'08.175"W	0.00	
5417.00†	12.000	67.580	5333.58	-115.60	310.69	753.04	40°07'49.727"N	104°45'07.927"W	0.00	
5517.00†	12.000	67.580	5431.40	-118.55	318.62	772.26	40°07'49.806"N	104°45'07.680"W	0.00	
5617.00†	12.000	67.580	5529.21	-121.50	326.55	791.48	40°07'49.884"N	104°45'07.432"W	0.00	
5717.00†	12.000	67.580	5627.03	-124.45	334.48	810.70	40°07'49.962"N	104°45'07.185"W	0.00	
5817.00†	12.000	67.580	5724.84	-127.40	342.41	829.92	40°07'50.041"N	104°45'06.937"W	0.00	
5917.00†	12.000	67.580	5822.66	-130.35	350.34	849.14	40°07'50.119"N	104°45'06.690"W	0.00	
6017.00†	12.000	67.580	5920.47	-133.30	358.27	868.36	40°07'50.197"N	104°45'06.443"W	0.00	
6117.00†	12.000	67.580	6018.29	-136.25	366.20	887.58	40°07'50.276"N	104°45'06.195"W	0.00	
6217.00†	12.000	67.580	6116.10	-139.20	374.13	906.80	40°07'50.354"N	104°45'05.948"W	0.00	
6317.00†	12.000	67.580	6213.92	-142.15	382.06	926.02	40°07'50.432"N	104°45'05.700"W	0.00	
6417.00†	12.000	67.580	6311.73	-145.10	389.99	945.24	40°07'50.511"N	104°45'05.453"W	0.00	
6517.00†	12.000	67.580	6409.55	-148.05	397.92	964.46	40°07'50.589"N	104°45'05.205"W	0.00	
6617.00†	12.000	67.580	6507.36	-151.00	405.85	983.68	40°07'50.667"N	104°45'04.958"W	0.00	
6717.00†	12.000	67.580	6605.17	-153.95	413.77	1002.90	40°07'50.746"N	104°45'04.710"W	0.00	
6817.00†	12.000	67.580	6702.99	-156.90	421.70	1022.12	40°07'50.824"N	104°45'04.463"W	0.00	
6917.00†	12.000	67.580	6800.80	-159.85	429.63	1041.34	40°07'50.902"N	104°45'04.216"W	0.00	
7017.00†	12.000	67.580	6898.62	-162.80	437.56	1060.56	40°07'50.981"N	104°45'03.968"W	0.00	
7063.64	12.000	67.580	6944.24	-164.18	441.26	1069.52	40°07'51.017"N	104°45'03.853"W	0.00	End of Tangent (J)
7117.00†	10.647	94.143	6996.60	-163.41	443.02	1079.57	40°07'51.035"N	104°45'03.723"W	10.00	
7217.00†	14.406	138.394	7094.41	-149.40	433.03	1097.09	40°07'50.936"N	104°45'03.498"W	10.00	
7317.00†	22.346	158.216	7189.32	-119.43	406.01	1112.45	40°07'50.669"N	104°45'03.300"W	10.00	
7340.62†	24.436	160.989	7211.00	-110.11	397.22	1115.70	40°07'50.582"N	104°45'03.258"W	10.00	SHARON SPRINGS
7408.30†	30.633	166.918	7271.00	-78.88	367.15	1124.18	40°07'50.285"N	104°45'03.149"W	10.00	NIOBRARA A
7417.00†	31.445	167.522	7278.45	-74.40	362.78	1125.17	40°07'50.242"N	104°45'03.136"W	10.00	
7451.06†	34.649	169.642	7307.00	-55.86	344.57	1128.83	40°07'50.062"N	104°45'03.089"W	10.00	NIOBRARA B
7517.00†	40.934	172.907	7359.09	-15.68	304.65	1134.87	40°07'49.667"N	104°45'03.011"W	10.00	
7569.23†	45.965	174.953	7397.00	19.86	268.94	1138.64	40°07'49.314"N	104°45'02.963"W	10.00	NIOBRARA C
7617.00†	50.593	176.540	7428.78	54.95	233.40	1141.27	40°07'48.963"N	104°45'02.929"W	10.00	
7717.00†	60.337	179.278	7485.41	135.35	151.19	1144.15	40°07'48.151"N	104°45'02.892"W	10.00	
7817.00†	70.127	181.527	7527.26	223.06	60.51	1143.45	40°07'47.255"N	104°45'02.901"W	10.00	
7830.00†	71.401	181.797	7531.54	234.86	48.24	1143.09	40°07'47.133"N	104°45'02.906"W	10.00	FORT HAYS



# Planned Wellpath Report

GOBBLER 13C-23HZ (PERMIT REV-2) PWP

Page 4 of 6



## REFERENCE WELLPATH IDENTIFICATION

Operator	KERR-MCGEE OIL & GAS ONSHORE LP	Slot	SLOT#58 GOBBLER 13C-23HZ (466'FNL & 279'FEL,SEC.22)
Area	COLORADO	Well	GOBBLER 13C-23HZ
Field	WELD COUNTY (KERR MCGEE)	Wellbore	GOBBLER 13C-23HZ PWB
Facility	SEC.22-T2N-R66W		

## WELLPATH DATA (139 stations) † = interpolated/extrapolated station

MD [ft]	Inclination [°]	Azimuth [°]	TVD [ft]	Vert Sect [ft]	North [ft]	East [ft]	Latitude	Longitude	DLS [°/100ft]	Comments
7917.00†	79.942	183.512	7553.06	315.42	-35.88	1139.17	40°07'46.302"N	104°45'02.956"W	10.00	
7931.68†	81.384	183.791	7555.44	329.20	-50.34	1138.24	40°07'46.159"N	104°45'02.968"W	10.00	CODELL
8017.00†	89.768	185.379	7562.01	409.63	-135.05	1131.44	40°07'45.322"N	104°45'03.056"W	10.00	
8023.54	90.410	185.500	7562.00	415.79	-141.56	1130.82	40°07'45.258"N	104°45'03.064"W	10.00	End of 3D Arc
8117.00†	90.410	185.500	7561.33	503.74	-234.59	1121.87	40°07'44.338"N	104°45'03.179"W	0.00	
8217.00†	90.410	185.500	7560.62	597.85	-334.13	1112.28	40°07'43.355"N	104°45'03.303"W	0.00	
8223.54	90.410	185.500	7560.57	604.00	-340.64	1111.66	40°07'43.291"N	104°45'03.311"W	0.00	End of Tangent
8317.00†	90.410	183.631	7559.90	692.46	-433.80	1104.22	40°07'42.370"N	104°45'03.407"W	2.00	
8417.00†	90.410	181.631	7559.19	788.14	-533.68	1099.63	40°07'41.383"N	104°45'03.466"W	2.00	
8501.21	90.410	179.946	7558.58	869.45	-617.88	1098.47	40°07'40.551"N	104°45'03.481"W	2.00	End of 3D Arc
8517.00†	90.410	179.946	7558.47	884.76	-633.67	1098.48	40°07'40.395"N	104°45'03.480"W	0.00	
8617.00†	90.410	179.946	7557.76	981.70	-733.67	1098.58	40°07'39.407"N	104°45'03.479"W	0.00	
8717.00†	90.410	179.946	7557.04	1078.64	-833.66	1098.67	40°07'38.418"N	104°45'03.478"W	0.00	
8817.00†	90.410	179.946	7556.33	1175.57	-933.66	1098.76	40°07'37.430"N	104°45'03.477"W	0.00	
8917.00†	90.410	179.946	7555.61	1272.51	-1033.66	1098.86	40°07'36.442"N	104°45'03.476"W	0.00	
9017.00†	90.410	179.946	7554.90	1369.45	-1133.66	1098.95	40°07'35.454"N	104°45'03.475"W	0.00	
9117.00†	90.410	179.946	7554.18	1466.39	-1233.65	1099.04	40°07'34.466"N	104°45'03.474"W	0.00	
9217.00†	90.410	179.946	7553.47	1563.33	-1333.65	1099.14	40°07'33.477"N	104°45'03.472"W	0.00	
9317.00†	90.410	179.946	7552.75	1660.27	-1433.65	1099.23	40°07'32.489"N	104°45'03.471"W	0.00	
9417.00†	90.410	179.946	7552.04	1757.21	-1533.65	1099.33	40°07'31.501"N	104°45'03.470"W	0.00	
9517.00†	90.410	179.946	7551.32	1854.14	-1633.64	1099.42	40°07'30.513"N	104°45'03.469"W	0.00	
9617.00†	90.410	179.946	7550.61	1951.08	-1733.64	1099.51	40°07'29.525"N	104°45'03.468"W	0.00	
9717.00†	90.410	179.946	7549.89	2048.02	-1833.64	1099.61	40°07'28.537"N	104°45'03.467"W	0.00	
9817.00†	90.410	179.946	7549.18	2144.96	-1933.64	1099.70	40°07'27.548"N	104°45'03.466"W	0.00	
9917.00†	90.410	179.946	7548.46	2241.90	-2033.63	1099.79	40°07'26.560"N	104°45'03.464"W	0.00	
10017.00†	90.410	179.946	7547.75	2338.84	-2133.63	1099.89	40°07'25.572"N	104°45'03.463"W	0.00	
10117.00†	90.410	179.946	7547.03	2435.77	-2233.63	1099.98	40°07'24.584"N	104°45'03.462"W	0.00	
10217.00†	90.410	179.946	7546.32	2532.71	-2333.63	1100.07	40°07'23.596"N	104°45'03.461"W	0.00	
10317.00†	90.410	179.946	7545.60	2629.65	-2433.62	1100.17	40°07'22.607"N	104°45'03.460"W	0.00	
10417.00†	90.410	179.946	7544.89	2726.59	-2533.62	1100.26	40°07'21.619"N	104°45'03.459"W	0.00	
10517.00†	90.410	179.946	7544.17	2823.53	-2633.62	1100.35	40°07'20.631"N	104°45'03.458"W	0.00	
10617.00†	90.410	179.946	7543.46	2920.47	-2733.61	1100.45	40°07'19.643"N	104°45'03.456"W	0.00	
10717.00†	90.410	179.946	7542.74	3017.40	-2833.61	1100.54	40°07'18.655"N	104°45'03.455"W	0.00	
10817.00†	90.410	179.946	7542.03	3114.34	-2933.61	1100.64	40°07'17.667"N	104°45'03.454"W	0.00	
10917.00†	90.410	179.946	7541.31	3211.28	-3033.61	1100.73	40°07'16.678"N	104°45'03.453"W	0.00	
11017.00†	90.410	179.946	7540.59	3308.22	-3133.60	1100.82	40°07'15.690"N	104°45'03.452"W	0.00	
11117.00†	90.410	179.946	7539.88	3405.16	-3233.60	1100.92	40°07'14.702"N	104°45'03.451"W	0.00	
11217.00†	90.410	179.946	7539.16	3502.10	-3333.60	1101.01	40°07'13.714"N	104°45'03.449"W	0.00	
11317.00†	90.410	179.946	7538.45	3599.04	-3433.60	1101.10	40°07'12.726"N	104°45'03.448"W	0.00	
11417.00†	90.410	179.946	7537.73	3695.97	-3533.59	1101.20	40°07'11.737"N	104°45'03.447"W	0.00	
11517.00†	90.410	179.946	7537.02	3792.91	-3633.59	1101.29	40°07'10.749"N	104°45'03.446"W	0.00	
11617.00†	90.410	179.946	7536.30	3889.85	-3733.59	1101.38	40°07'09.761"N	104°45'03.445"W	0.00	
11717.00†	90.410	179.946	7535.59	3986.79	-3833.59	1101.48	40°07'08.773"N	104°45'03.444"W	0.00	
11817.00†	90.410	179.946	7534.87	4083.73	-3933.58	1101.57	40°07'07.785"N	104°45'03.443"W	0.00	
11917.00†	90.410	179.946	7534.16	4180.67	-4033.58	1101.66	40°07'06.796"N	104°45'03.441"W	0.00	



# Planned Wellpath Report

GOBBLER 13C-23HZ (PERMIT REV-2) PWP

Page 5 of 6



REFERENCE WELLPATH IDENTIFICATION			
Operator	KERR-MCGEE OIL & GAS ONSHORE LP	Slot	SLOT#58 GOBBLER 13C-23HZ (466'FNL & 279'FEL,SEC.22)
Area	COLORADO	Well	GOBBLER 13C-23HZ
Field	WELD COUNTY (KERR MCGEE)	Wellbore	GOBBLER 13C-23HZ PWB
Facility	SEC.22-T2N-R66W		

WELLPATH DATA (139 stations) † = interpolated/extrapolated station										
MD [ft]	Inclination [°]	Azimuth [°]	TVD [ft]	Vert Sect [ft]	North [ft]	East [ft]	Latitude	Longitude	DLS [°/100ft]	Comments
12017.00†	90.410	179.946	7533.44	4277.60	-4133.58	1101.76	40°07'05.808"N	104°45'03.440"W	0.00	
12117.00†	90.410	179.946	7532.73	4374.54	-4233.58	1101.85	40°07'04.820"N	104°45'03.439"W	0.00	
12217.00†	90.410	179.946	7532.01	4471.48	-4333.57	1101.95	40°07'03.832"N	104°45'03.438"W	0.00	
12218.51	90.410	179.946	7532.00 <sup>1</sup>	4472.94	-4335.08	1101.95	40°07'03.817"N	104°45'03.438"W	0.00	End of 3D Arc

HOLE & CASING SECTIONS - Ref Wellbore: GOBBLER 13C-23HZ PWB Ref Wellpath: GOBBLER 13C-23HZ (PERMIT REV-2) PWP									
String/Diameter	Start MD [ft]	End MD [ft]	Interval [ft]	Start TVD [ft]	End TVD [ft]	Start N/S [ft]	Start E/W [ft]	End N/S [ft]	End E/W [ft]
13.5in Open Hole	17.00	1000.00	983.00	17.00	1000.00	0.00	0.00	0.00	0.00
9.625in Casing Surface	17.00	1000.00	983.00	17.00	1000.00	0.00	0.00	0.00	0.00
8.75in Open Hole	1000.00	8023.54	7023.54	1000.00	7562.00	0.00	0.00	-141.56	1130.82
7in Casing Intermediate	17.00	8023.54	8006.54	17.00	7562.00	0.00	0.00	-141.56	1130.82
6.125in Open Hole	8023.54	12218.51	4194.97	7562.00	7532.00	-141.56	1130.82	-4335.08	1101.95
4.5in Casing Production	17.00	12218.51	12201.51	17.00	7532.00	0.00	0.00	-4335.08	1101.95

TARGETS									
Name	MD [ft]	TVD [ft]	North [ft]	East [ft]	Grid East [US ft]	Grid North [US ft]	Latitude	Longitude	Shape
GOBBLER 1N-23HZ/1C-23HZ SECTION LINES		-1.00	-4544.88	4471.84	3212854.29	1286435.25	40°07'01.740"N	104°44'20.062"W	polygon
GOBBLER SECTION 22		32.00	65.66	-1820.97	3206523.24	1290992.56	40°07'47.305"N	104°45'41.065"W	polygon
GOBBLER 1N-23HZ/1C-23HZ HARDLINES (460' SETBACKS)		7235.00	-4544.88	4471.84	3212854.29	1286435.25	40°07'01.740"N	104°44'20.062"W	polygon
GOBBLER HARDLINES (460' SETBACKS)		7432.00	65.66	-1820.97	3206523.24	1290992.56	40°07'47.305"N	104°45'41.065"W	polygon
1) GOBBLER 13C-23HZ BHL ON PLAT (460'FSL & 850'FWL, SEC.23) REV-1	12218.51	7532.00	-4335.08	1101.95	3209482.90	1286616.72	40°07'03.817"N	104°45'03.438"W	point
VICTOR USX #23-4		7560.00	-464.34	1268.55	3209616.97	1290488.56	40°07'42.068"N	104°45'01.291"W	circle

SURVEY PROGRAM - Ref Wellbore: GOBBLER 13C-23HZ PWB Ref Wellpath: GOBBLER 13C-23HZ (PERMIT REV-2) PWP				
Start MD [ft]	End MD [ft]	Positional Uncertainty Model	Log Name/Comment	Wellbore
17.00	12218.51	NaviTrak (Standard)		GOBBLER 13C-23HZ PWB



# Planned Wellpath Report

GOBBLER 13C-23HZ (PERMIT REV-2) PWP

Page 6 of 6



## REFERENCE WELLPATH IDENTIFICATION

Operator	KERR-MCGEE OIL & GAS ONSHORE LP	Slot	SLOT#58 GOBBLER 13C-23HZ (466'FNL & 279'FEL,SEC.22)
Area	COLORADO	Well	GOBBLER 13C-23HZ
Field	WELD COUNTY (KERR MCGEE)	Wellbore	GOBBLER 13C-23HZ PWB
Facility	SEC.22-T2N-R66W		

## WELLPATH COMMENTS

MD [ft]	Inclination [°]	Azimuth [°]	TVD [ft]	Comment
4356.24	12.000	67.580	4296.00	PARKMAN
4740.64	12.000	67.580	4672.00	SUSSEX
7340.62	24.436	160.989	7211.00	SHARON SPRINGS
7408.30	30.633	166.918	7271.00	NIOBRARA A
7451.06	34.649	169.642	7307.00	NIOBRARA B
7569.23	45.965	174.953	7397.00	NIOBRARA C
7830.00	71.401	181.797	7531.54	FORT HAYS
7931.68	81.384	183.791	7555.44	CODELL