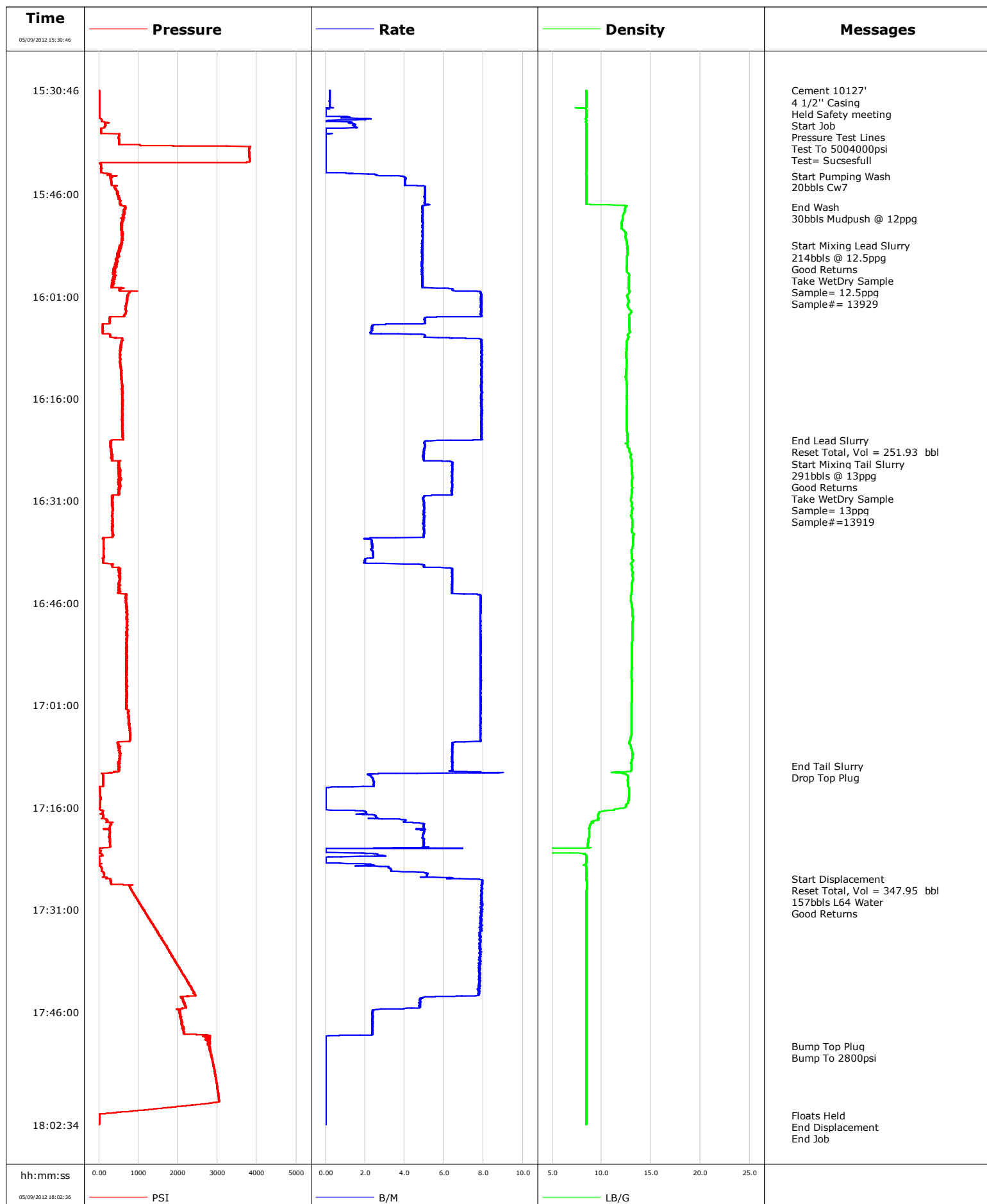


Well	EF16D P27	Client	ENCANA
Field	N PARACHUTE	SIR No.	C62J-00027
Engineer		Job Type	PRODUCTION
Country	United States	Job Date	05-09-2012

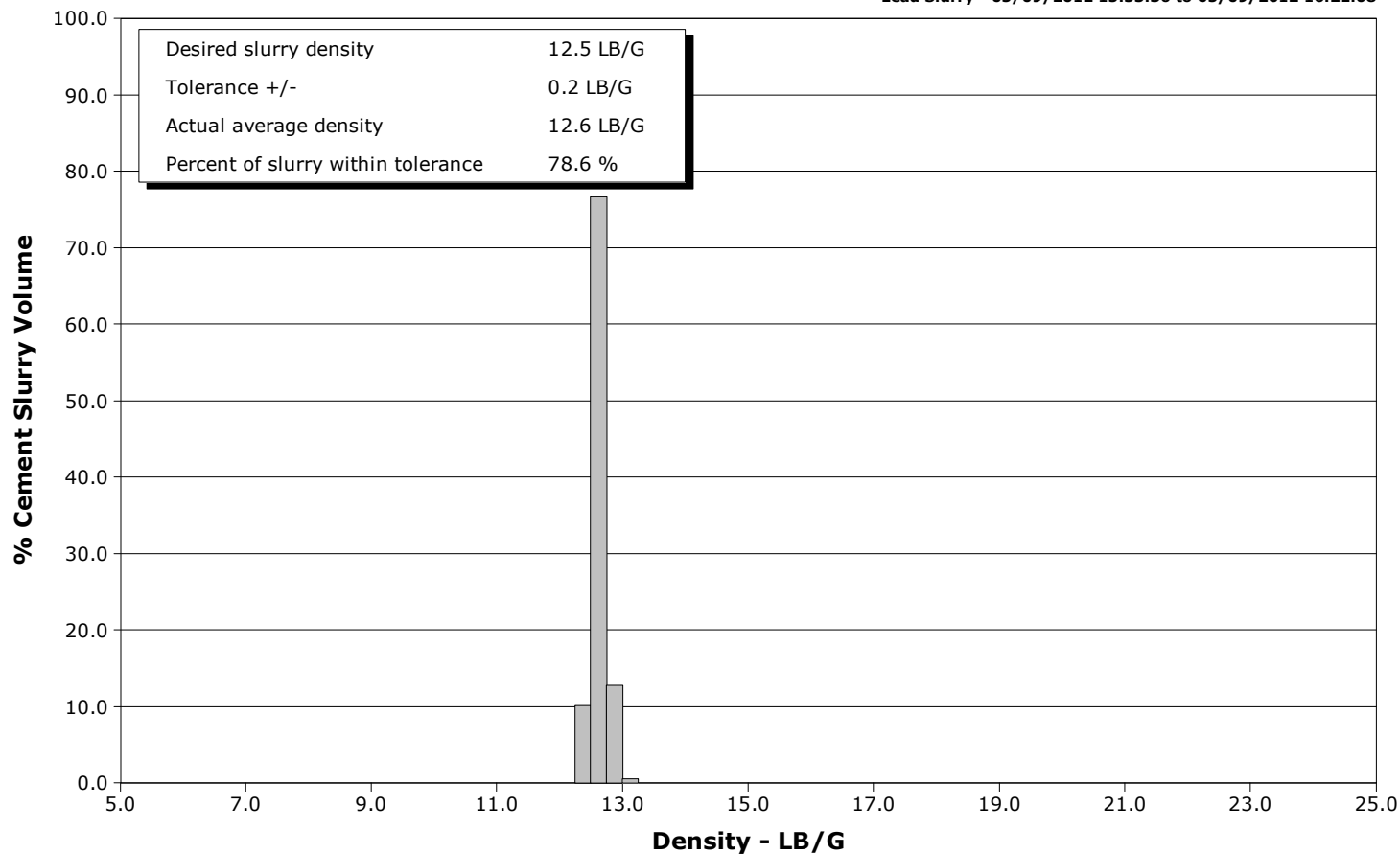


Schlumberger Cementing Qa/Qc Density Report

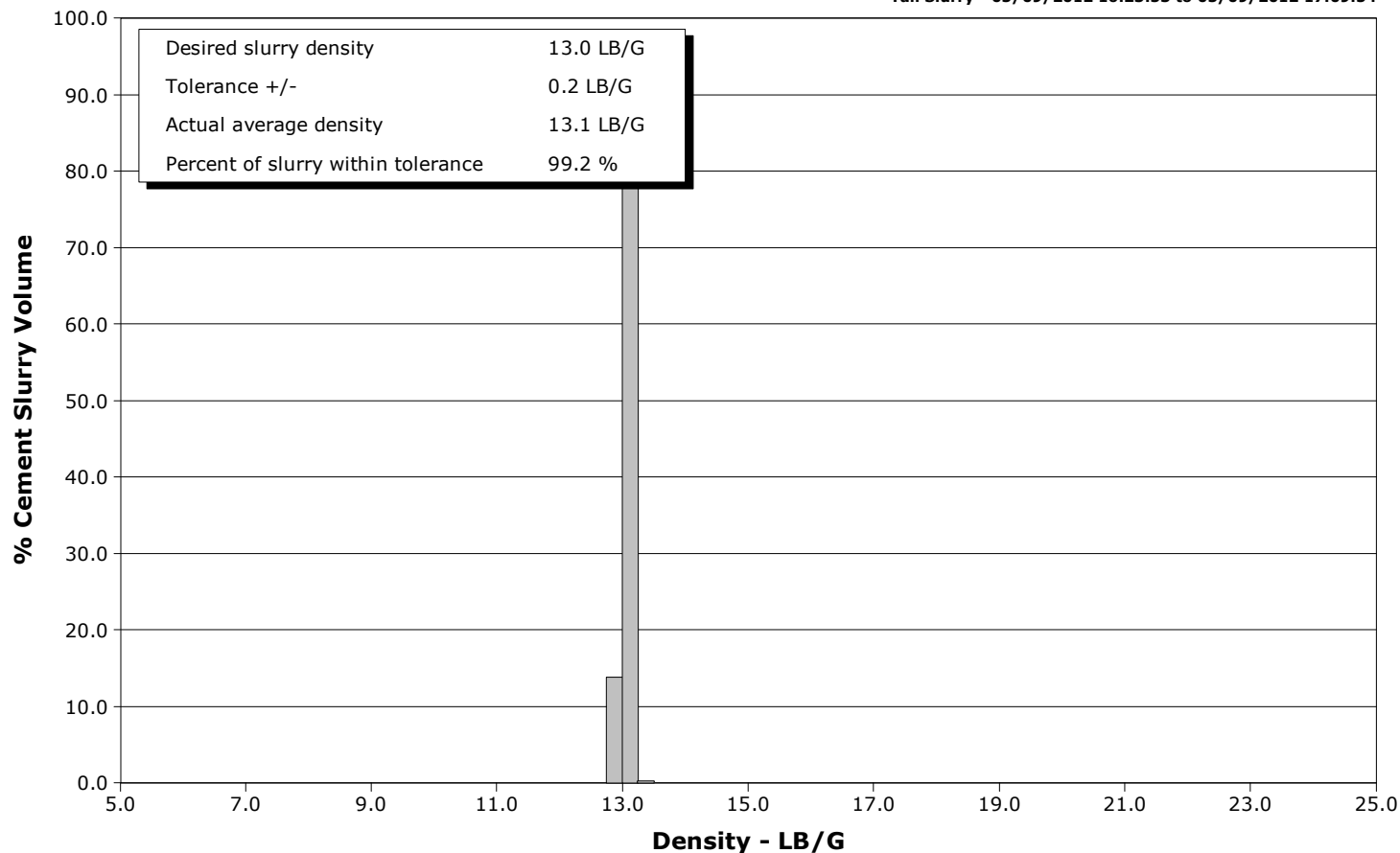
Well EF16D P27
Field N PARACHUTE
Engineer
Country United States

Client ENCANA
SIR No. C62J-00027
Job Type PRODUCTION
Job Date 05-09-2012

Lead Slurry - 05/09/2012 15:53:36 to 05/09/2012 16:22:08



Tail Slurry - 05/09/2012 16:23:53 to 05/09/2012 17:09:54





Cementing Service Report

				Customer ENCANA			Job Number C62J-00027					
Well EF16D P27			Location (legal) N PARACHUTE			Schlumberger Location GCO		Job Start May/09/2012				
Field N PARACHUTE		Formation Name/Type			Deviation	Bit Size		Well MD		Well TVD		
County GARFILED		State/Province Colorado			BHP	BHST		BHCT		Pore Press. Gradient		
Well Master 0630742067		API/UWI										
Rig Name PATTERSON 303		Drilled For Gas		Service Via Land		Casing/Liner						
						Depth,	Size,	Weight,	Grade	Thread		
Offshore Zone		Well Class New		Well Type Development								
Drilling Fluid Type		Max. Density		Plastic Viscosity		Tubing/Drill Pipe						
						Depth,	Size,	Weight,	Grade	Thread		
Service Line Cementing		Job Type PRODUCTION										
Max. Allowed Tub. Press		Max. Allowed Ann. Press		WH Connection Single Cement head		Perforations/Open Hole						
						Top,	Bottom,		No. of Shots	Total Interval		
										Diameter		
						Treat Down Casing		Displacement 157.0 bbl		Packer Type	Packer Depth	
						Tubing Vol.		Casing Vol. 158.0 bbl		Annular Vol. 438.0 bbl		Openhole Vol. 699.0 bbl
Casing/Tubing Secured <input checked="" type="checkbox"/>		1 Hole Vol. Circulated prior to Cement <input checked="" type="checkbox"/>		Casing Tools				Squeeze Job				
Lift Pressure 7386 psi		Shoe Type Guide				Squeeze Type						
Pipe Rotated <input type="checkbox"/>		Pipe Reciprocated <input type="checkbox"/>		Shoe Depth 10127.0 ft				Tool Type				
No. Centralizers		Top Plugs 1		Bottom Plugs		Stage Tool Type				Tool Depth		
Cement Head Type Single		Stage Tool Depth				Tail Pipe Size						
Job Scheduled For May/09/2012		Arrived on Location May/09/2012		Leave Location May/09/2012		Collar Type Diff-Fill				Tail Pipe Depth		
						Collar Depth 10102.0 ft				Sqz. Total Vol.		
Date	Time 24-hr clock	Treating Pressure PSI	Flow Rate B/M	Density LB/G	Volume BBL	Message						
05/09/2012	14:52:49					Started Acquisition						
05/09/2012	15:30:46	7	0.2	8.46	0.0							
05/09/2012	15:30:47					Cement 10127'						
05/09/2012	15:30:47					4 1/2" Casing						
05/09/2012	15:30:47	7	0.2	8.46	0.0							
05/09/2012	15:30:48					Held Safety meeting						
05/09/2012	15:30:48	7	0.2	8.46	0.0							
05/09/2012	15:30:49	7	0.2	8.46	0.0							
05/09/2012	15:30:51					Start Job						
05/09/2012	15:30:51	7	0.2	8.46	0.0							
05/09/2012	15:30:52					Pressure Test Lines						
05/09/2012	15:30:52	7	0.2	8.46	0.0							
05/09/2012	15:30:53					Test To 5004000psi						
05/09/2012	15:30:53					Test= Sucsesfull						
05/09/2012	15:30:53	7	0.2	8.46	0.0							
05/09/2012	15:32:49	4	0.2	8.46	0.4							
05/09/2012	15:34:49	11	0.9	8.44	0.7							
05/09/2012	15:36:49	59	0.0	8.45	2.6							
05/09/2012	15:38:49	1042	0.0	8.45	2.7							
05/09/2012	15:40:49	3814	0.0	8.45	2.7							
05/09/2012	15:42:49	54	0.0	8.45	2.7							

Well			Field		Job Start	Customer		Job Number
EF16D P27			N PARACHUTE		May/09/2012	ENCANA		C62J-00027
Date	Time 24-hr clock	Treating Pressure PSI	Flow Rate B/M	Density LB/G	Volume BBL	Message		
05/09/2012	15:43:21	451	3.7	8.45	3.6			
05/09/2012	15:43:22					20bbls Cw7		
05/09/2012	15:43:22	447	3.8	8.45	3.7			
05/09/2012	15:44:49	464	4.9	8.46	9.5			
05/09/2012	15:46:49	538	5.0	8.45	19.6			
05/09/2012	15:47:52					End Wash		
05/09/2012	15:47:52	642	4.9	12.47	24.9			
05/09/2012	15:47:53					30bbls Mudpush @ 12ppg		
05/09/2012	15:47:53	647	4.9	12.47	24.9			
05/09/2012	15:48:49	631	4.9	12.27	29.5			
05/09/2012	15:50:49	564	4.9	12.04	39.4			
05/09/2012	15:52:49	591	4.9	12.50	49.2			
05/09/2012	15:53:36					Start Mixing Lead Slurry		
05/09/2012	15:53:36					214bbls @ 12.5ppg		
05/09/2012	15:53:36	543	4.9	12.60	53.0			
05/09/2012	15:53:37					Good Returns		
05/09/2012	15:53:37					Take WetDry Sample		
05/09/2012	15:53:37					Sample= 12.5ppg		
05/09/2012	15:53:37					Sample#= 13929		
05/09/2012	15:53:37	555	4.9	12.60	53.1			
05/09/2012	15:54:49	490	4.9	12.61	59.0			
05/09/2012	15:56:49	389	4.9	12.54	68.7			
05/09/2012	15:58:49	387	4.9	12.75	78.5			
05/09/2012	16:00:49	743	7.9	12.62	90.7			
05/09/2012	16:02:49	690	7.9	12.76	106.4			
05/09/2012	16:04:49	272	5.0	12.82	120.0			
05/09/2012	16:06:49	278	5.0	12.67	126.2			
05/09/2012	16:08:49	535	7.9	12.50	141.1			
05/09/2012	16:10:49	549	7.9	12.51	156.9			
05/09/2012	16:12:49	570	7.9	12.45	172.6			
05/09/2012	16:14:49	597	7.9	12.56	188.4			
05/09/2012	16:16:49	606	7.9	12.55	204.2			
05/09/2012	16:18:49	591	7.9	12.53	220.0			
05/09/2012	16:20:49	599	7.9	12.58	235.8			
05/09/2012	16:22:08					End Lead Slurry		
05/09/2012	16:22:08	342	7.5	12.62	246.2			
05/09/2012	16:22:49	295	5.0	12.65	249.7			
05/09/2012	16:23:16					Reset Total, Vol = 251.93 bbl		
05/09/2012	16:23:16	297	5.0	12.71	251.9			
05/09/2012	16:23:53					Start Mixing Tail Slurry		
05/09/2012	16:23:53	306	5.0	12.83	255.0			
05/09/2012	16:23:54					291bbls @ 13ppg		
05/09/2012	16:23:54					Good Returns		
05/09/2012	16:23:54					Take WetDry Sample		
05/09/2012	16:23:54					Sample= 13ppg		
05/09/2012	16:23:54					Sample#=13919		
05/09/2012	16:23:54	322	5.0	12.84	255.1			
05/09/2012	16:24:49	338	5.0	12.97	259.6			
05/09/2012	16:26:49	520	6.4	13.09	271.9			
05/09/2012	16:28:49	559	6.4	13.07	284.7			
05/09/2012	16:30:49	349	4.9	12.96	296.7			
05/09/2012	16:32:49	348	5.0	13.05	306.6			
05/09/2012	16:34:49	358	5.0	13.10	316.6			
05/09/2012	16:36:49	122	2.3	13.18	325.5			

Well			Field		Job Start	Customer		Job Number
EF16D P27			N PARACHUTE		May/09/2012	ENCANA		C62J-00027
Date	Time 24-hr clock	Treating Pressure PSI	Flow Rate B/M	Density LB/G	Volume BBL	Message		
05/09/2012	16:40:49	516	5.8	13.09	336.1			
05/09/2012	16:42:49	508	6.4	13.12	348.8			
05/09/2012	16:44:49	675	7.8	12.99	361.8			
05/09/2012	16:46:49	702	7.8	13.09	377.5			
05/09/2012	16:48:49	702	7.8	13.13	393.2			
05/09/2012	16:50:49	726	7.8	13.13	408.9			
05/09/2012	16:52:49	710	7.8	13.07	424.5			
05/09/2012	16:54:49	700	7.8	13.05	440.2			
05/09/2012	16:56:49	693	7.8	13.01	455.9			
05/09/2012	16:58:49	704	7.8	13.07	471.6			
05/09/2012	17:00:49	706	7.8	13.03	487.3			
05/09/2012	17:02:49	746	7.8	13.00	503.0			
05/09/2012	17:04:49	783	7.8	13.01	518.7			
05/09/2012	17:06:49	492	6.4	12.89	533.8			
05/09/2012	17:08:49	506	6.4	13.10	546.6			
05/09/2012	17:09:54					End Tail Slurry		
05/09/2012	17:09:54	511	6.4	12.99	553.5			
05/09/2012	17:09:59					Drop Top Plug		
05/09/2012	17:09:59	511	6.4	12.99	554.0			
05/09/2012	17:10:49	409	7.8	11.94	559.4			
05/09/2012	17:12:49	104	2.4	12.67	565.3			
05/09/2012	17:14:49	41	0.0	12.74	565.7			
05/09/2012	17:16:49	89	2.1	9.74	566.5			
05/09/2012	17:18:49	277	5.0	8.78	573.5			
05/09/2012	17:20:49	276	5.0	8.65	583.4			
05/09/2012	17:22:49	58	2.4	8.31	589.7			
05/09/2012	17:24:49	62	3.2	8.45	592.3			
05/09/2012	17:26:27					Start Displacement		
05/09/2012	17:26:27	185	6.3	8.47	599.7			
05/09/2012	17:26:29					Reset Total, Vol = 347.95 bbl		
05/09/2012	17:26:29	287	6.8	8.47	599.9			
05/09/2012	17:26:30					157bbbls L64 Water		
05/09/2012	17:26:30					Good Returns		
05/09/2012	17:26:30	290	6.8	8.47	600.0			
05/09/2012	17:26:49	294	7.9	8.48	602.5			
05/09/2012	17:28:49	900	7.9	8.47	618.3			
05/09/2012	17:30:49	1106	7.9	8.47	634.1			
05/09/2012	17:32:49	1323	7.9	8.46	649.8			
05/09/2012	17:34:49	1539	7.9	8.46	665.5			
05/09/2012	17:36:49	1748	7.8	8.46	681.2			
05/09/2012	17:38:49	1965	7.8	8.46	696.8			
05/09/2012	17:40:49	2175	7.8	8.46	712.4			
05/09/2012	17:42:49	2371	7.7	8.46	727.9			
05/09/2012	17:44:49	2148	4.8	8.46	740.3			
05/09/2012	17:46:49	2055	2.4	8.46	746.8			
05/09/2012	17:48:49	2133	2.4	8.46	751.6			
05/09/2012	17:50:49	2794	0.0	8.46	753.1			
05/09/2012	17:51:01					Bump Top Plug		
05/09/2012	17:51:01	2771	0.0	8.46	753.1			
05/09/2012	17:51:02					Bump To 2800psi		
05/09/2012	17:51:02	2771	0.0	8.46	753.1			
05/09/2012	17:52:49	2857	0.0	8.46	753.1			
05/09/2012	17:54:49	2930	0.0	8.46	753.1			
05/09/2012	17:56:49	2988	0.0	8.46	753.1			

Well			Field		Job Start	Customer		Job Number
EF16D P27			N PARACHUTE		May/09/2012	ENCANA		C62J-00027
Date	Time 24-hr clock	Treating Pressure PSI	Flow Rate B/M	Density LB/G	Volume BBL	Message		
05/09/2012	18:00:49	394	0.0	8.46	753.1			
05/09/2012	18:01:12					Floats Held		
05/09/2012	18:01:12	5	0.0	8.46	753.1			
05/09/2012	18:01:27					End Displacement		
05/09/2012	18:01:27	4	0.0	8.46	753.1			
05/09/2012	18:01:28					End Job		

Post Job Summary

Average Pump Rates, bbl/min					Volume of Fluid Injected, bbl				
Slurry 6.0	N2	Mud 0.0	Maximum Rate 9.0		Total Slurry 753.1	Mud 0.0	Spacer 53.0	N2	
Treating Pressure Summary, psi					Breakdown Fluid				
Maximum 3830	Final 4	Average 858	Bump Plug to 2800	Breakdown	Type		Volume	Density	
Avg. N2 Percent		Designed Slurry Volume 504.0 bbl		Displacement 199.1 bbl		Mix Water Temp 62 degF		Cement Circulated to Surface? <input type="checkbox"/>	Volume
								Washed Thru Perfs <input type="checkbox"/>	To
Customer or Authorized Representative FLOYD ROBERTS				Schlumberger Supervisor JASON CRICK			Circulation Lost <input type="checkbox"/>	Job Completed <input checked="" type="checkbox"/>	
							-		-