



NABORS

**COMPLETION
& PRODUCTION
SERVICES CO.**

**MICRO
LOG**

Company		MULL DRILLING COMPANY, INC.	
Well	SAT UNIT #1-14		
Field	WILDCAT		
County	KIOWA	State	COLORADO
Location:	AP1 # : 05-061-06877		Other Services CDL/CNL/PE DIL/SONIC
Permanent Datum		GROUND LEVEL	Elevation 4101
Log Measured From		KELLY BUSHING 11' A.G.L.	
Drilling Measured From		KELLY BUSHING	
SEC 14 TWP 17S RGE 45W			
Date	10/13/12		
Run Number	TWO		
Depth Driller	5300		
Depth Logger	5302		
Bottom Logged Interval	5280		
Top Log Interval	3600		
Casing Driller	8 5/8"@352'		
Casing Logger	350		
Bit Size	7 7/8"		
Type Fluid in Hole	CHEMICALMUD	CHLORIDES 3,000 PPM	
Density / Viscosity	9.2/60		
pH / Fluid Loss	9.5/9.6		
Source of Sample	FLOWLINE		
Rm @ Meas. Temp	.900@80F		
Rmt @ Meas. Temp	.675@80F		
Rmc @ Meas. Temp	1.08@80F		
Source of Rmt / Rmc	MEASUREMENT		
Rm @ BHT	.563@128F		
Time Circulation Stopped	5.5 HOURS		
Time Logger on Bottom	8:15 A.M.		
Maximum Recorded Temperature	128F		
Equipment Number	4010		
Location	HAYS, KANSAS		
Recorded By	JEFF LUEBBERS		
Witnessed By	PHIL ASKEY		

<<< Fold Here >>>

All interpretations are opinions based on inferences from electrical or other measurements and we cannot and do not guarantee the accuracy or correctness of any interpretation, and we shall not, except in the case of gross or willful negligence on our part, be liable or responsible for any loss, costs, damages, or expenses incurred or sustained by anyone resulting from any interpretation made by any of our officers, agents or employees. These interpretations are also subject to our general terms and conditions set out in our current Price Schedule.

Comments

THANK YOU FOR USING "NABORS" HAYS, KS. (785) 628-6395
DIRECTIONS
CHEYENNE WELLS, CO. 18S. ON HWY 385 TO "RD. Z", 6W. TO "RD. 59", 1/2S., E. INTO

Database File:

409693pe.db

Dataset Pathname:

pass6.3

Presentation Format:

micro

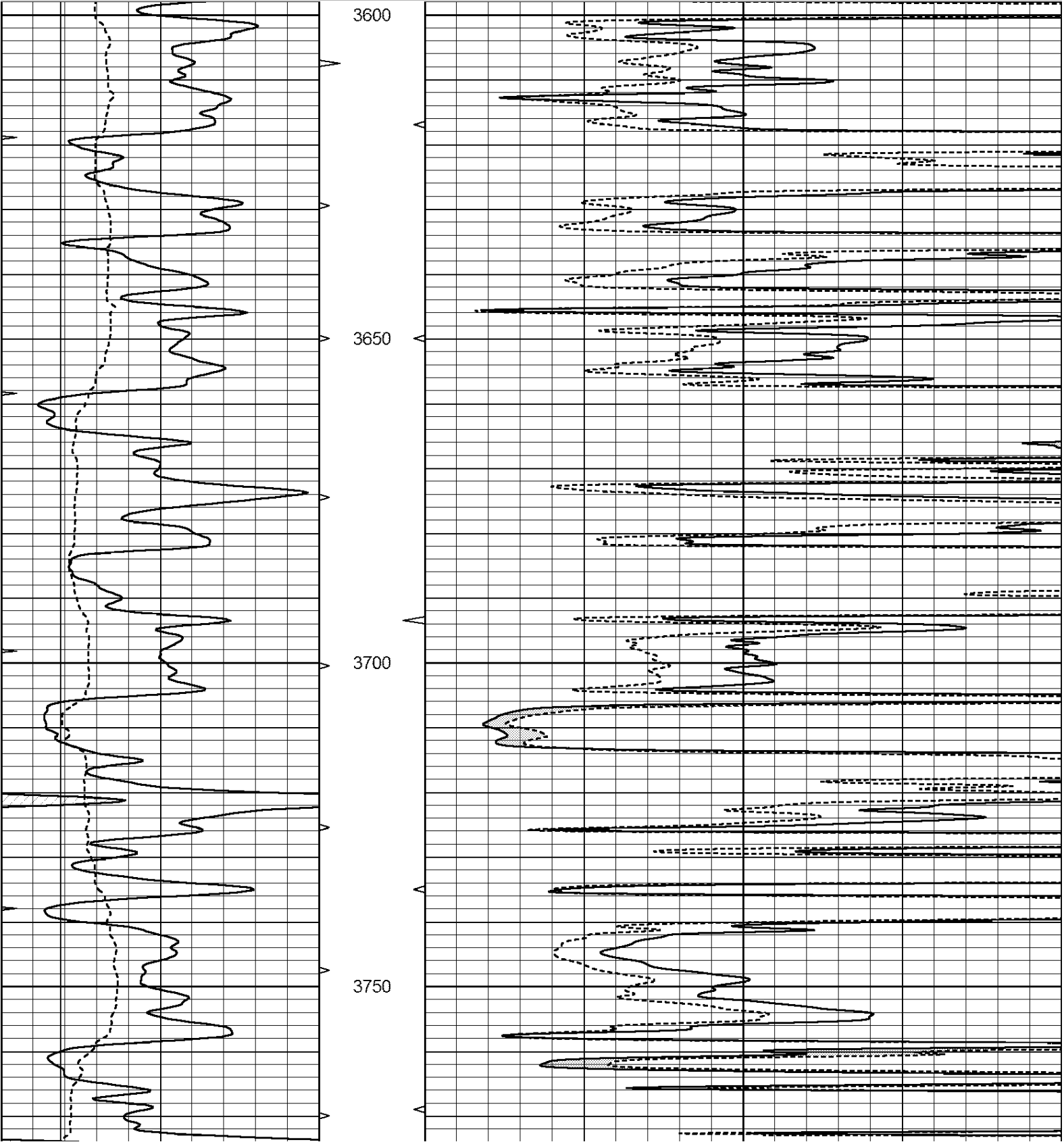
Dataset Creation:

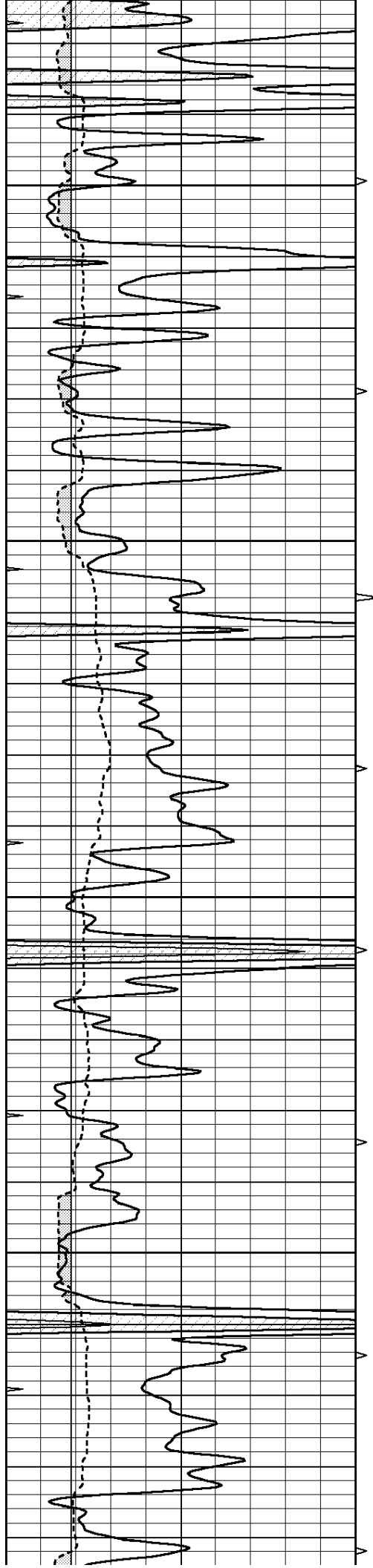
Sat Oct 13 12:08:12 2012

Charted by:

Depth in Feet scaled 1:240

0	GAMMA RAY (GAPI)	150	ABHV	0	MEL1.5 (Ohm-m)	40
6	CALIPER (in)	16	10 (ft3) 0	0	MEL2.0 (Ohm-m)	40
0	MINMK	20	TBHV			
			0 (ft3) 10			



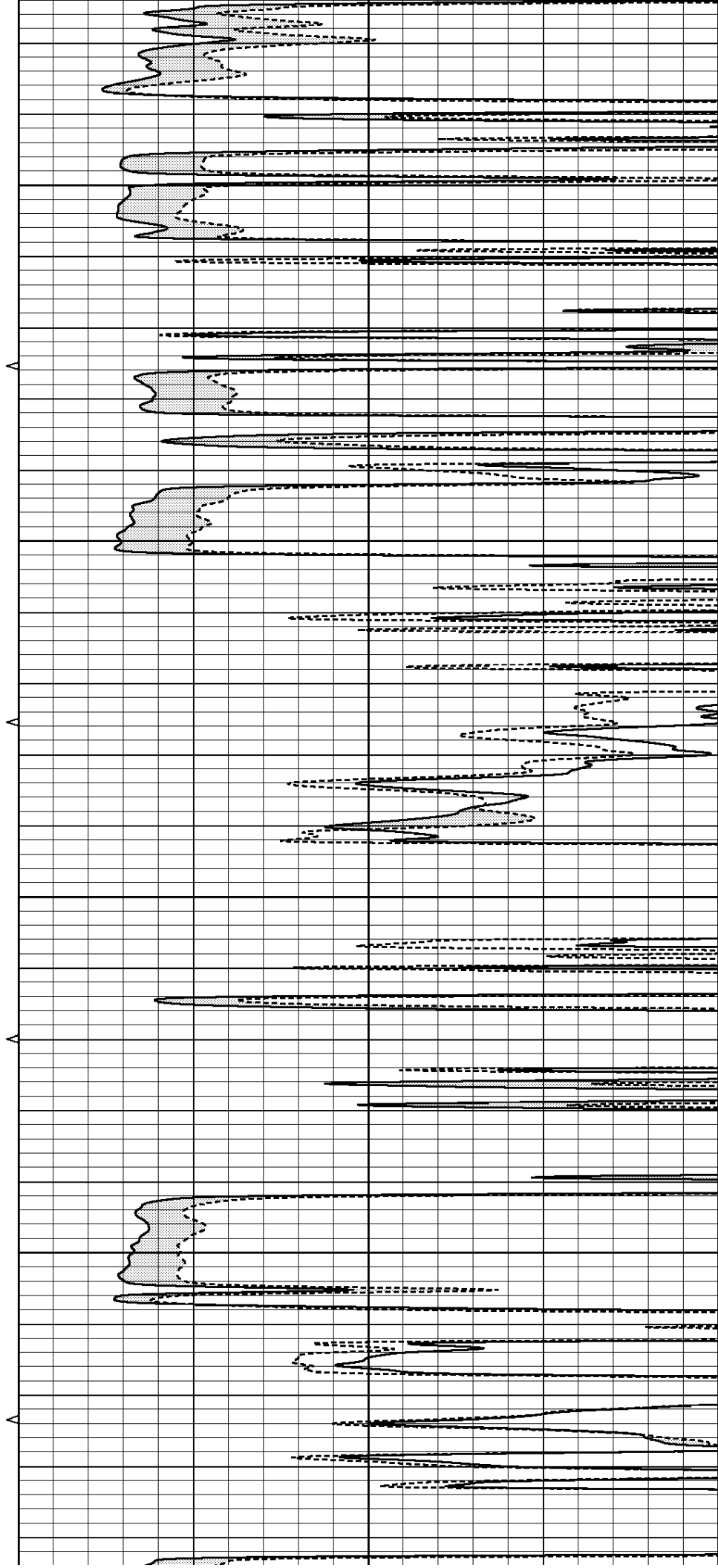


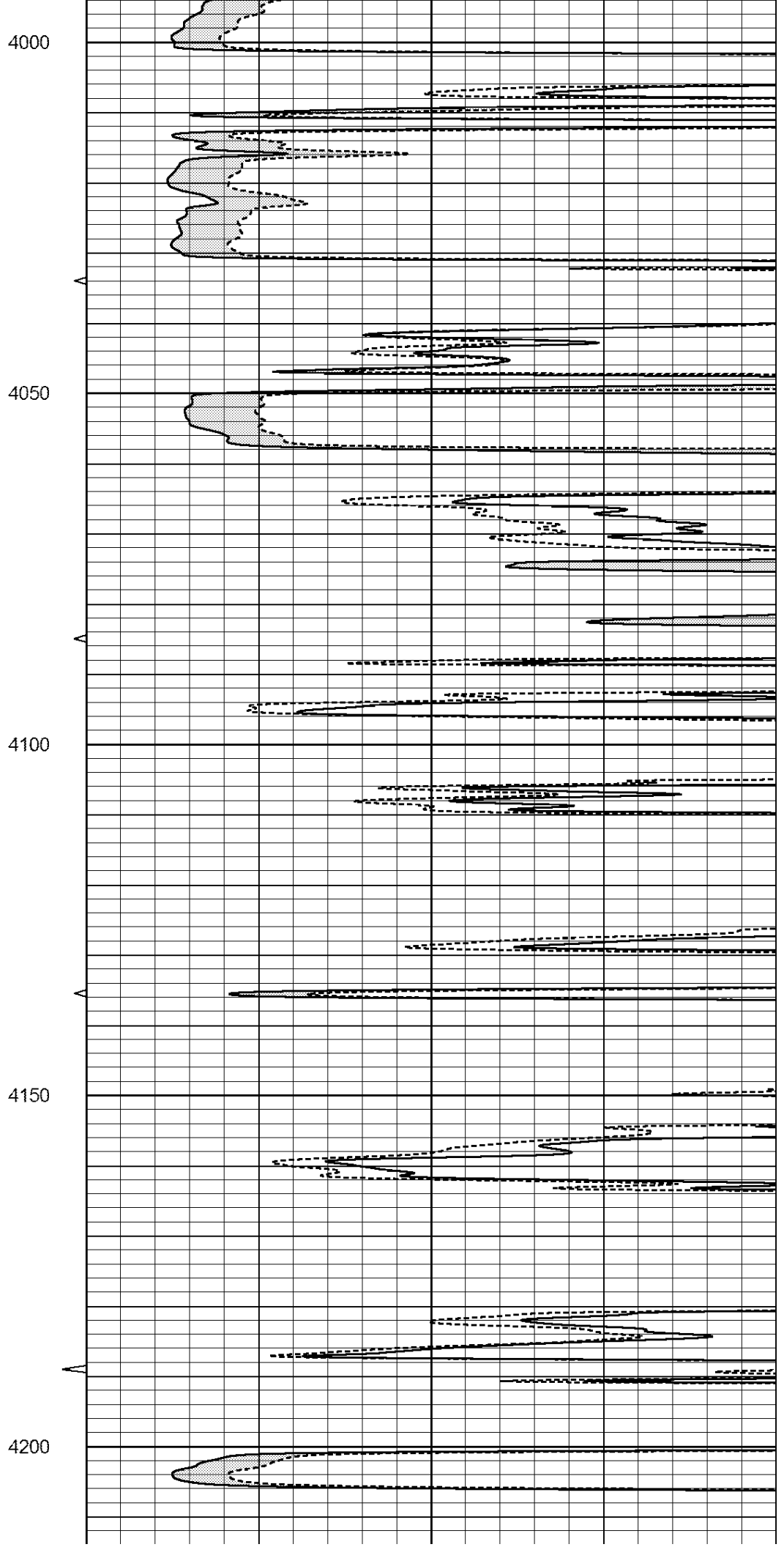
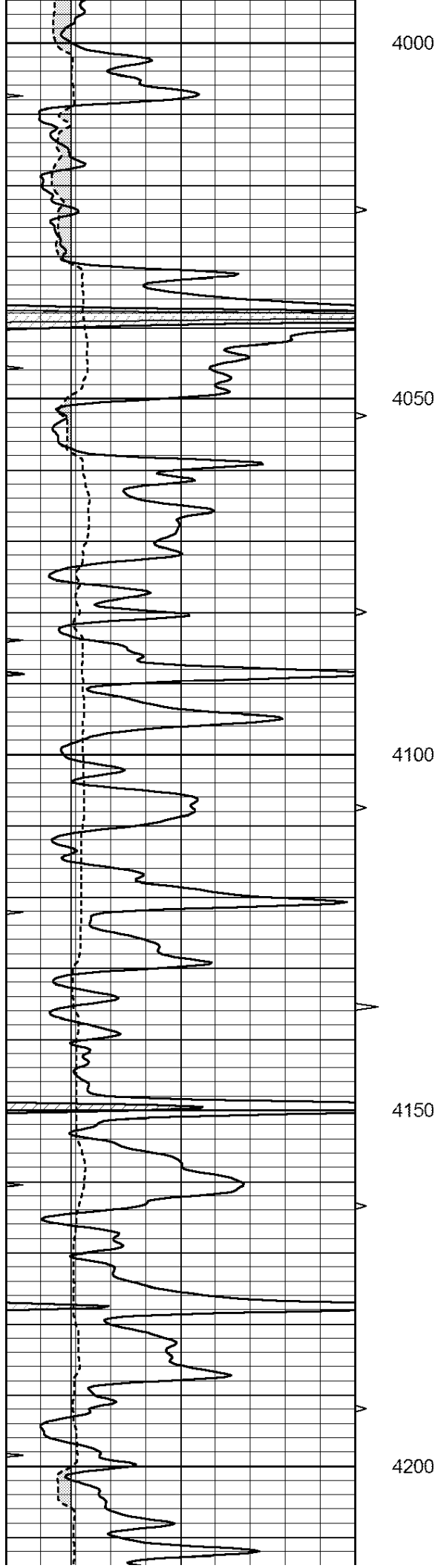
3800

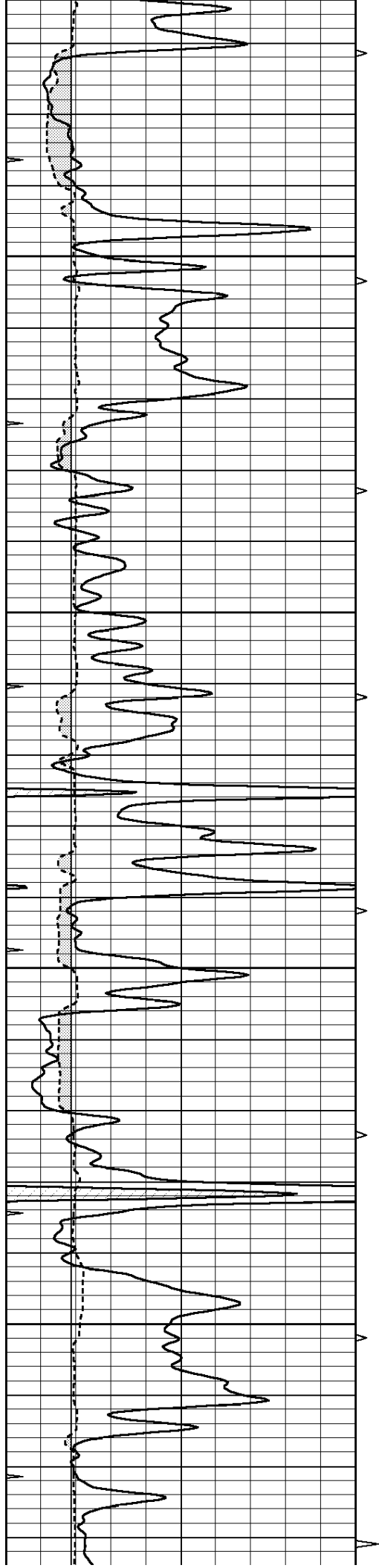
3850

3900

3950





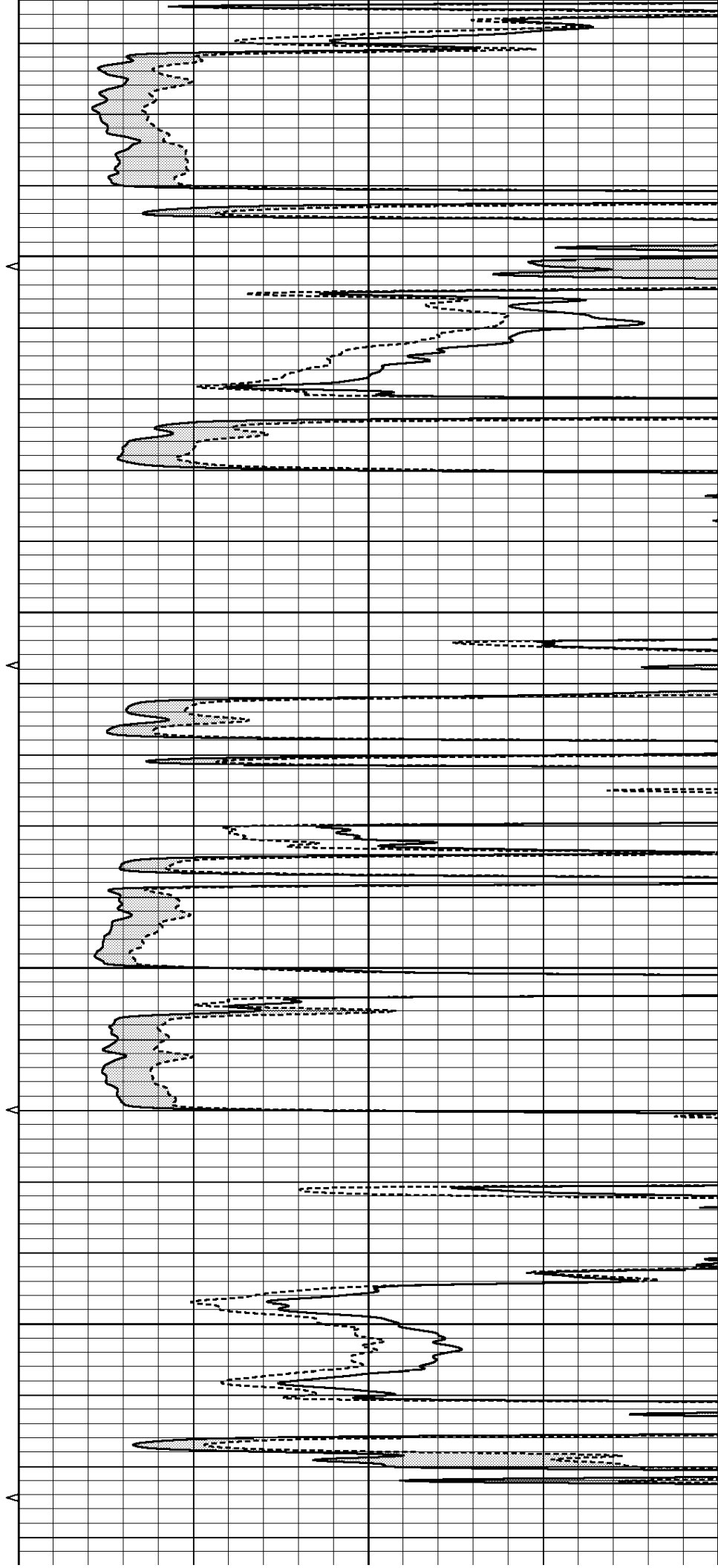


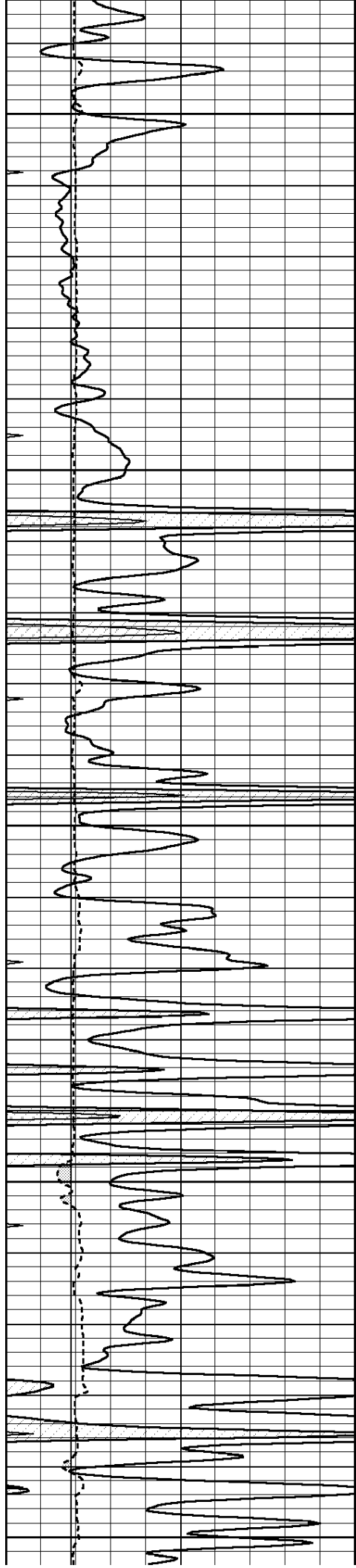
4250

4300

4350

4400





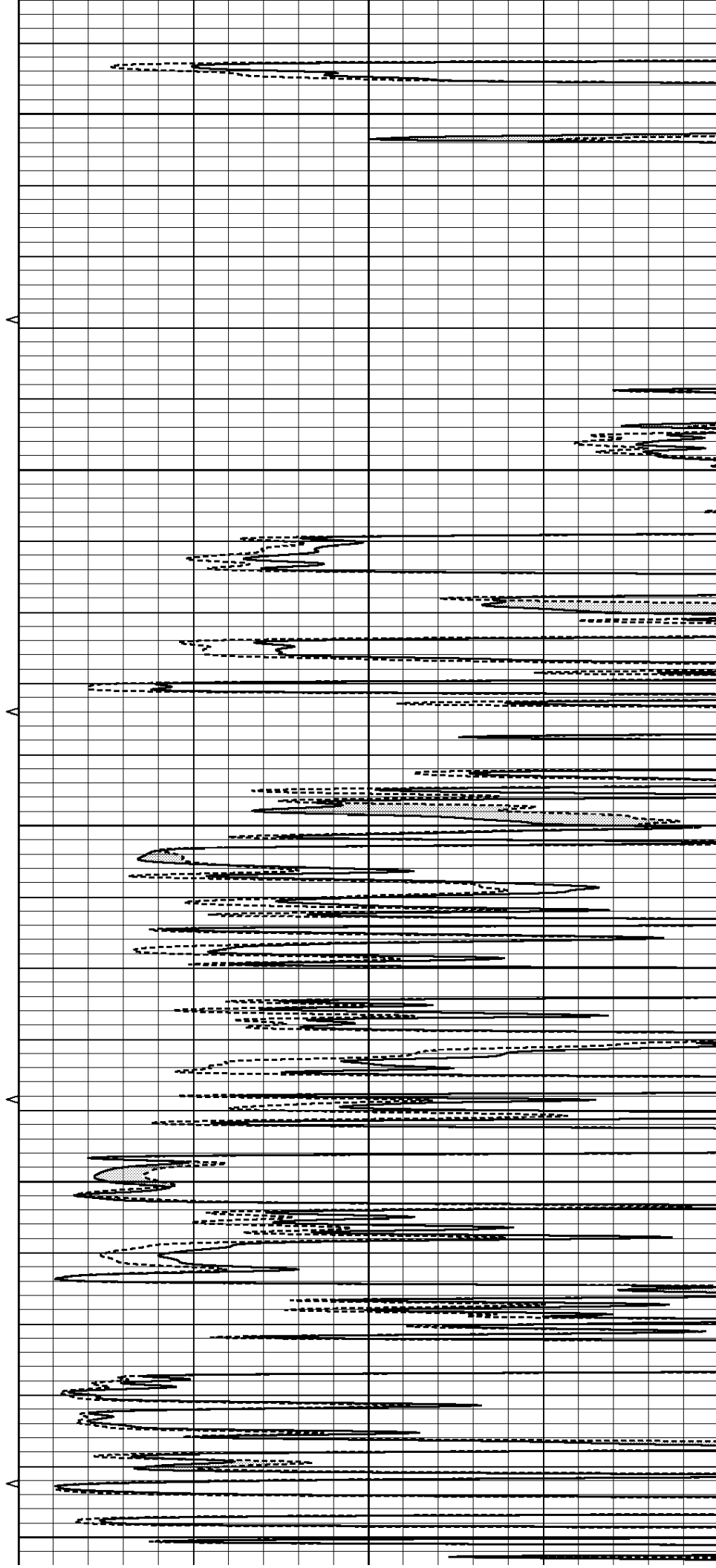
4450

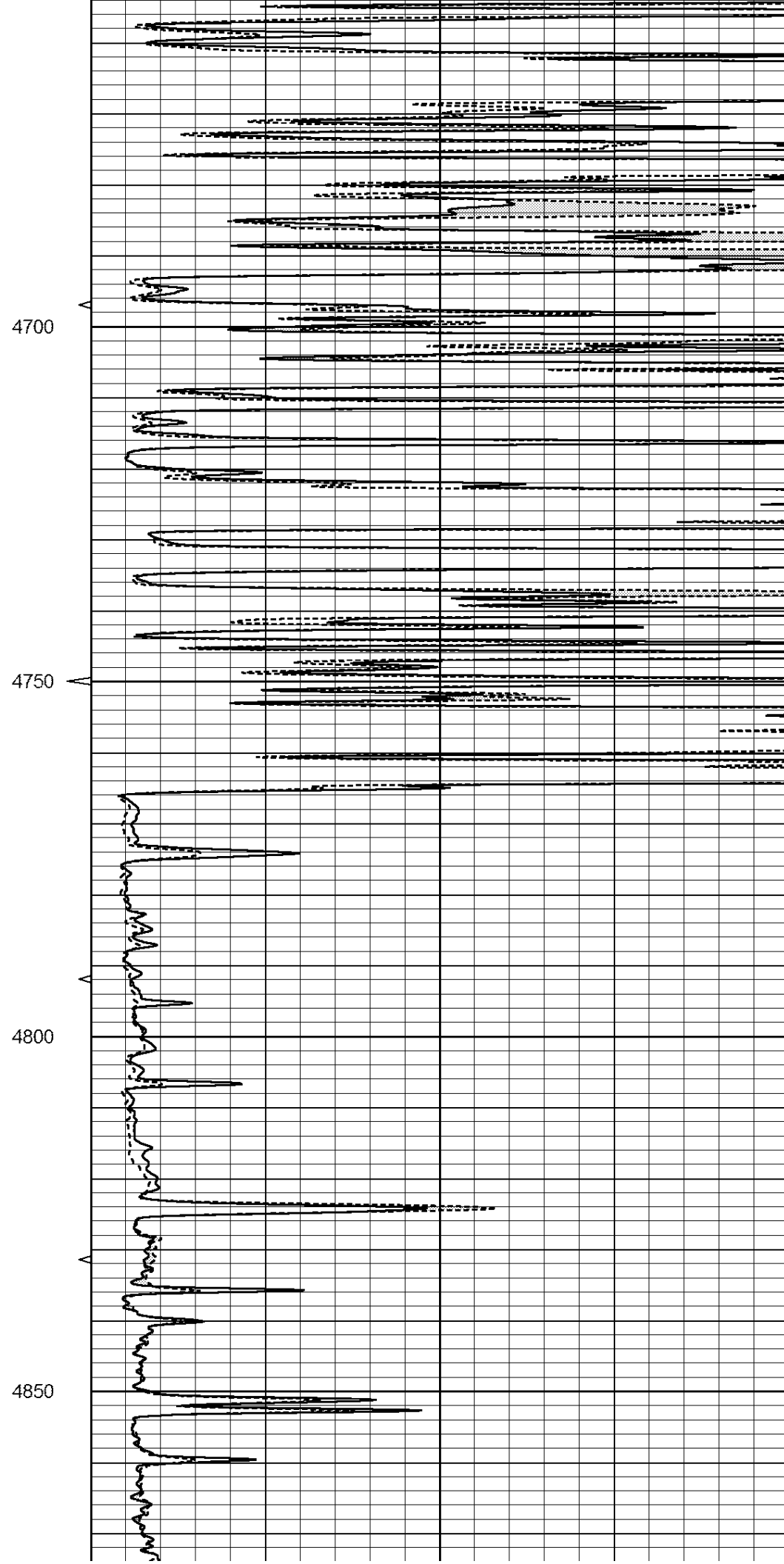
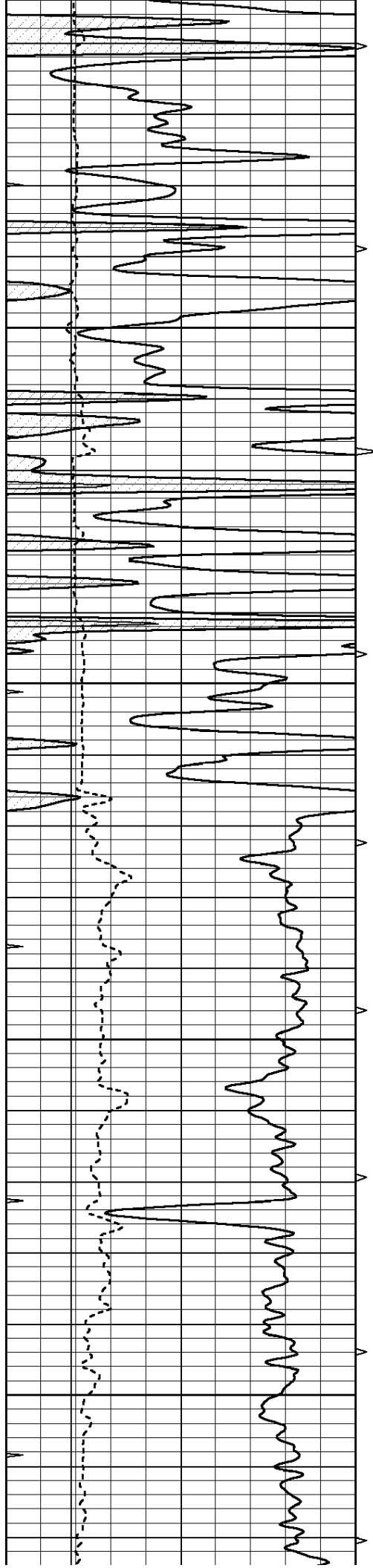
4500

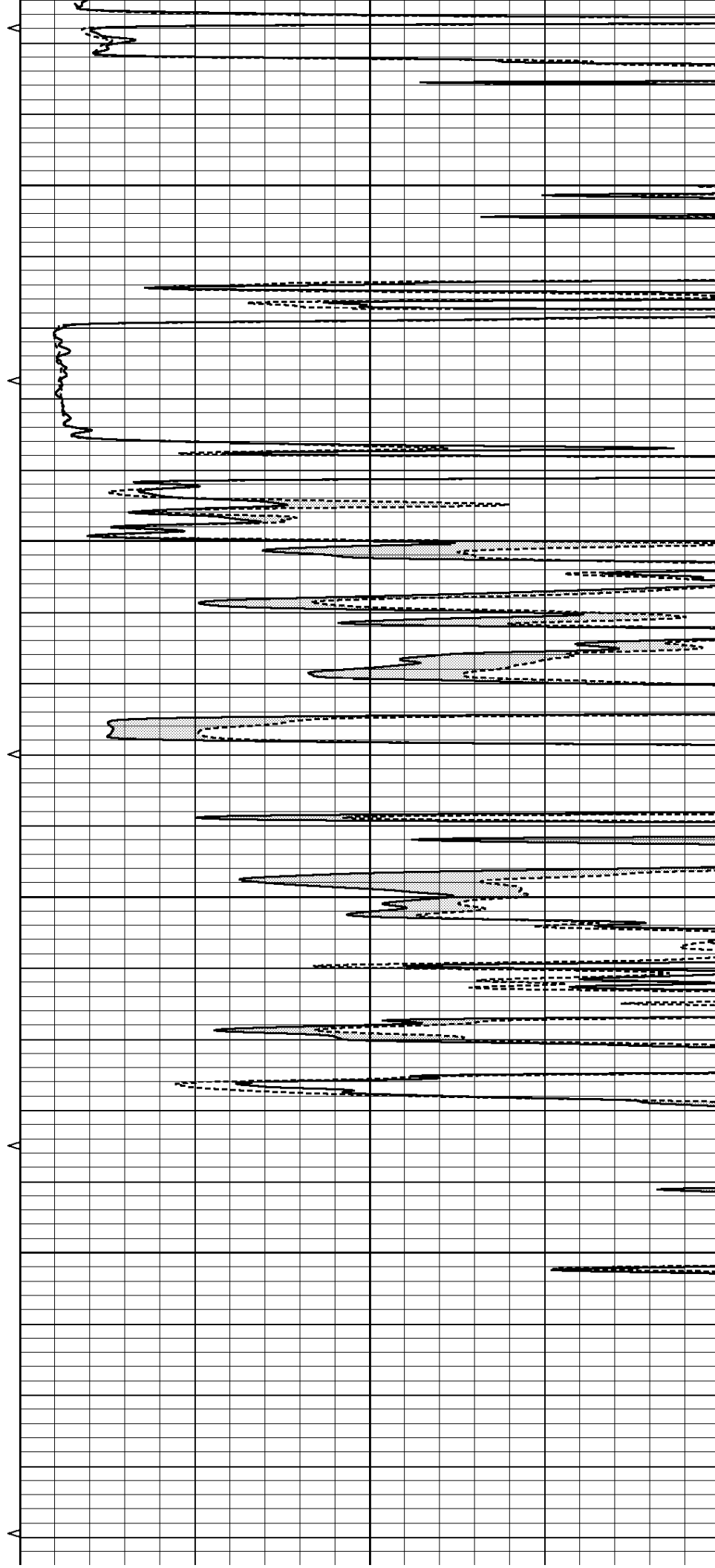
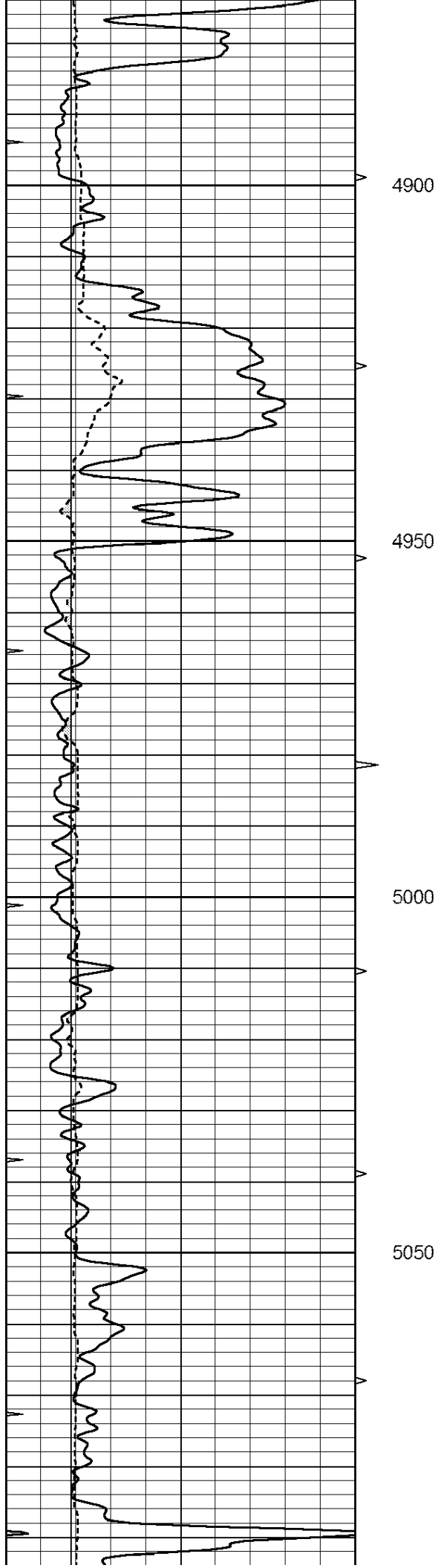
4550

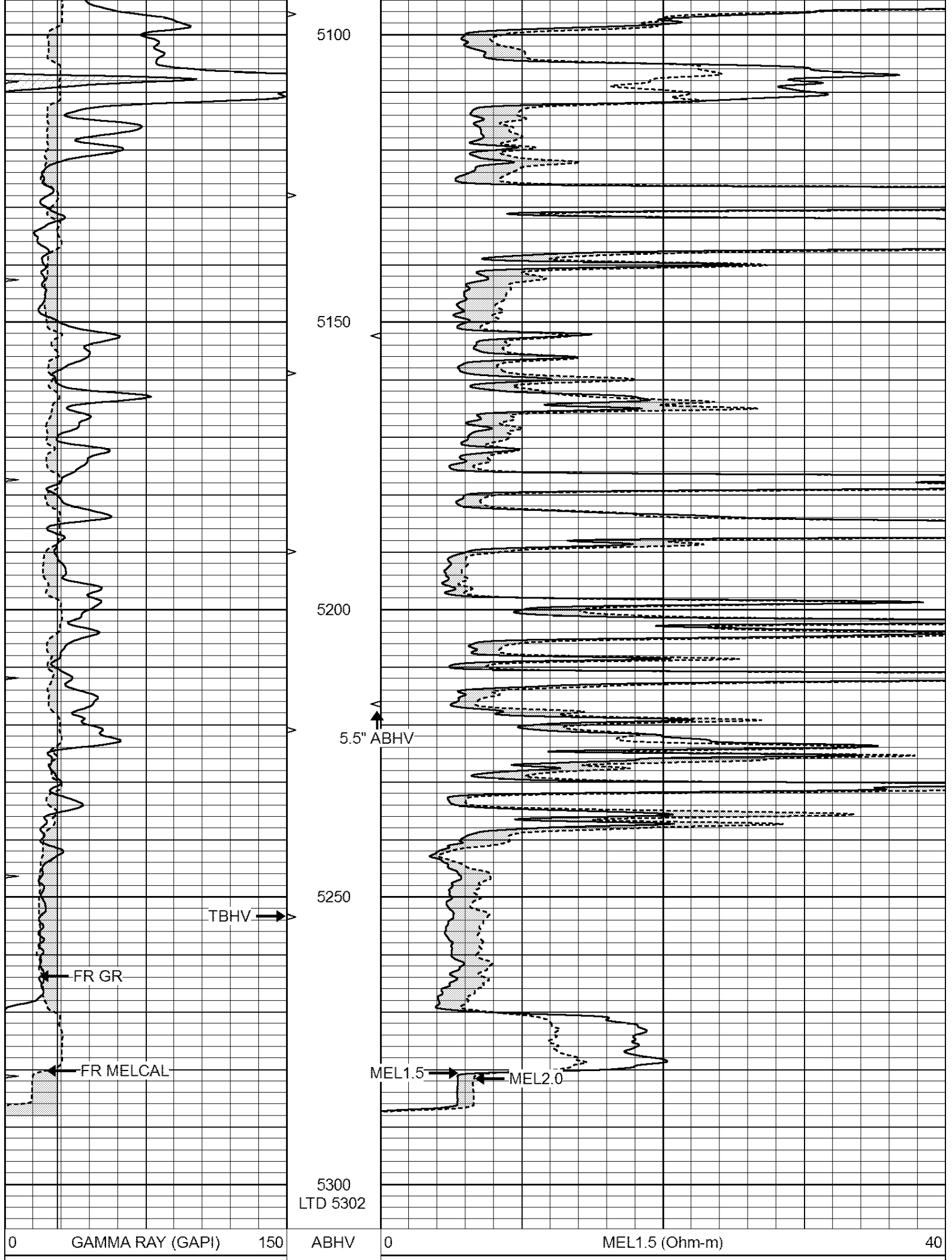
4600

4650









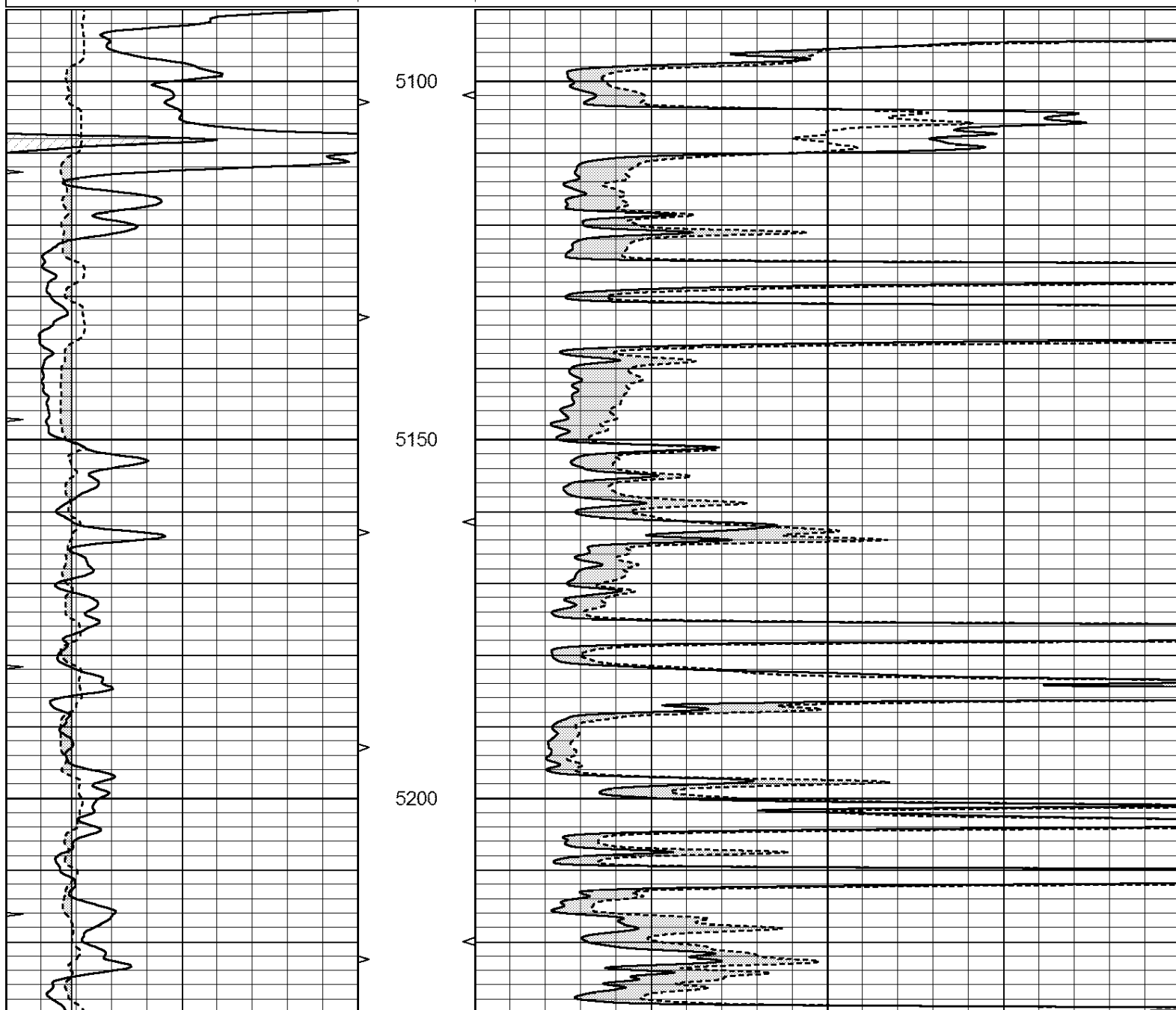
6	CALIPER (in)	16	10 (ft3)	0 0	MEL2.0 (Ohm-m)	40
0	MINMK	20	TBHV			
			0 (ft3) 10			

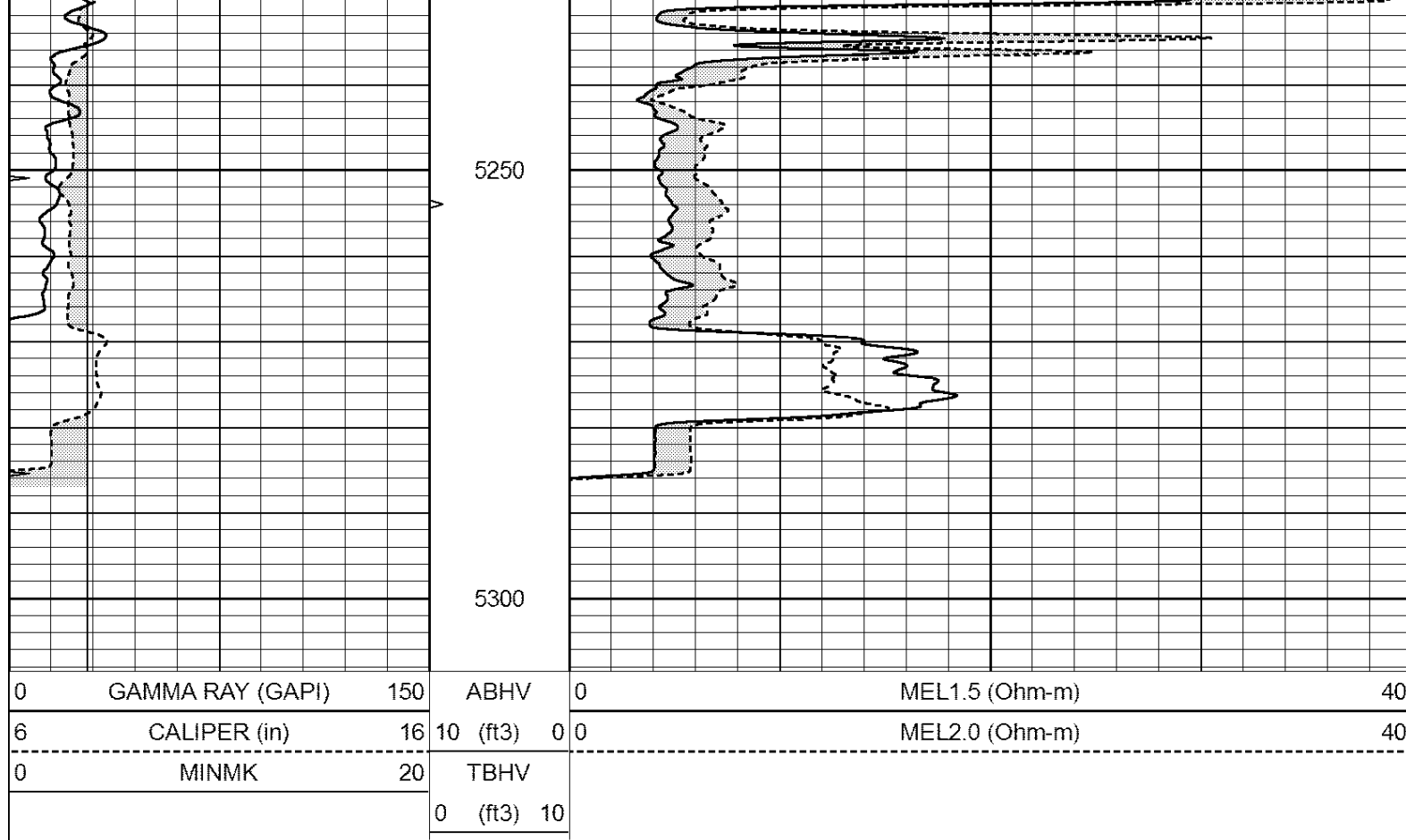


REPEAT SECTION

Database File: 409693pe.db
Dataset Pathname: pass5.2
Presentation Format: micro
Dataset Creation: Sat Oct 13 12:08:55 2012
Charted by: Depth in Feet scaled 1:240

0	GAMMA RAY (GAPI)	150	ABHV	0	MEL1.5 (Ohm-m)	40
6	CALIPER (in)	16	10 (ft3) 0	0	MEL2.0 (Ohm-m)	40
0	MINMK	20	TBHV			
			0 (ft3) 10			





Calibration Report

Database File: 409693pe.db
 Dataset Pathname: pass6.3
 Dataset Creation: Sat Oct 13 12:08:12 2012

MICRO Calibration Report

Serial Number:	MICRO5	
Tool Model:	PROBE	
Performed:	Wed Oct 03 13:36:18 2012	
Caliper Calibration:	Gain=4.000	Offset=-8.400
References	Low Cal	High Cal
Readings	8.000	16.000
	4.100	6.100
1.5" Calibration:	Gain=36.000	Offset=-0.500
References	Low Cal	High Cal
Readings	0.000	20.000
	-0.002	0.981
2" Calibration:	Gain=40.000	Offset=-0.400
References	Low Cal	High Cal
Readings	0.000	20.000
	0.002	0.898

Gamma Ray Calibration Report

Serial Number:	GR4	
Tool Model:	OPEN	
Performed:	Sat Oct 13 11:04:45 2012	
Calibrator Value:	200.0	GAPI

Background Reading:

0.0

cps

Calibrator Reading:

189.0

cps

Sensitivity:

1.5000

GAPI/cps