

WPX Energy Rocky Mtn LLC

FINAL

RWF 442-31

API #05-045-21047-00

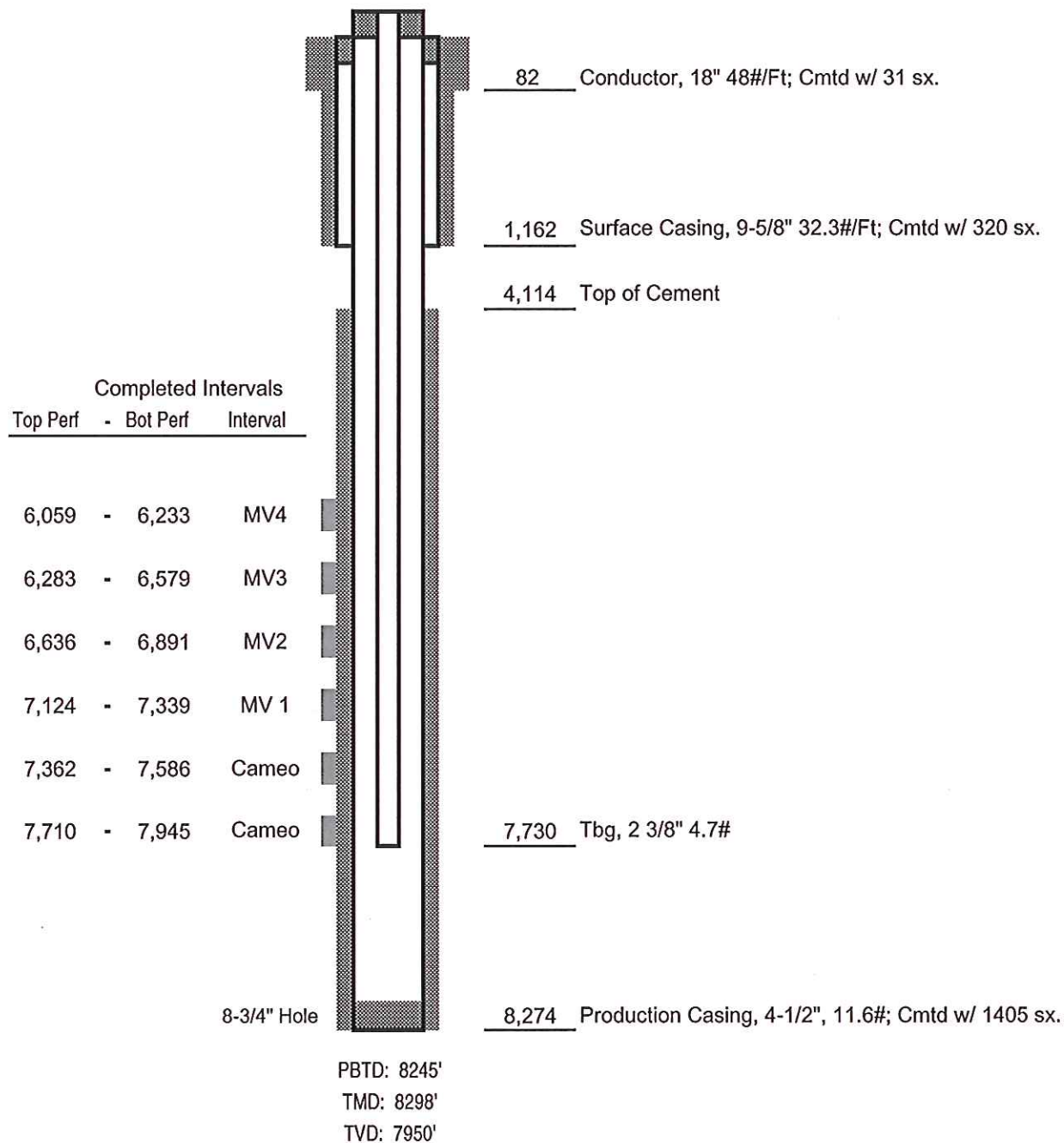
1104' FNL x 1290' FWL - SHL - (NWNW)

Sec. 32-T6S-R94W

2178' FNL x 2865' FEL - BHL - (SENE)

Sec. 31-T6S-R94W

Garfield County, Colorado



Not to Scale