

The Road to Excellence Starts with Safety

| | | | |
|---|-----------------------------------|--|------------------------|
| Sold To #: 300721 | Ship To #: 2889943 | Quote #: | Sales Order #: 9607830 |
| Customer: WPX ENERGY ROCKY MOUNTAIN LLC-EBUS | Customer Rep: Duniho, Al | | |
| Well Name: RWF | Well #: 442-31 | API/UWI #: 05-045-21047 | |
| Field: RULISON | City (SAP): RIFLE | County/Parish: Garfield | State: Colorado |
| Legal Description: | | | |
| Lat: N 39.486 deg. OR N 39 deg. 29 min. 8.387 secs. | | Long: W 107.916 deg. OR W -108 deg. 5 min. 2.612 secs. | |
| Contractor: CYCLONE 17 | Rig/Platform Name/Num: CYCLONE 17 | | |
| Job Purpose: Cement Surface Casing | Ticket Amount: | | |
| Well Type: Development Well | Job Type: Cement Surface Casing | | |
| Sales Person: MAYO, MARK | Srv Supervisor: REEVES, BRANDON | MBU ID Emp #: 287883 | |

| Activity Description | Date/Time | Cht # | Rate bbl/min | Volume bbl | | Pressure psig | | Comments |
|--|------------------|-------|--------------|------------|-------|---------------|--------|--|
| | | | | Stage | Total | Tubing | Casing | |
| Call Out | 06/27/2012 15:00 | | | | | | | |
| Pre-Convoy Safety Meeting | 06/27/2012 17:30 | | | | | | | |
| Arrive at Location from Service Center | 06/27/2012 19:25 | | | | | | | |
| Assessment Of Location Safety Meeting | 06/27/2012 20:00 | | | | | | | |
| Other | 06/28/2012 00:30 | | | | | | | SPOT EQUIPMENT |
| Pre-Rig Up Safety Meeting | 06/28/2012 00:40 | | | | | | | |
| Rig-Up Equipment | 06/28/2012 00:50 | | | | | | | |
| Pre-Job Safety Meeting | 06/28/2012 01:10 | | | | | | | |
| Start Job | 06/28/2012 01:24 | | | | | | | TD-1182' TP-1192.10' SJ-45.88' MW-10.2# HOLE-13 1/2" CASING-9 5/8" 32.3# |
| Test Lines | 06/28/2012 01:26 | | | | | | 3575.0 | |
| Pump Spacer 1 | 06/28/2012 01:30 | | 4 | 20 | | | 140.0 | FRESH WATER SPACER |
| Pump Lead Cement | 06/28/2012 01:39 | | 8 | 67.8 | | | 400.0 | 160 SKS. @ 12.3# 2.38 YIELD 13.75 WRQ. |
| Pump Tail Cement | 06/28/2012 01:48 | | 8 | 60.1 | | | 405.0 | 160 SKS. @ 12.8# 2.11 YIELD 11.75 WRQ |
| Drop Top Plug | 06/28/2012 01:58 | | | | | | | |
| Pump Displacement | 06/28/2012 02:01 | | 10 | | | | 645.0 | FRESH WATER DISPLACEMENT |
| Slow Rate | 06/28/2012 02:11 | | 2 | 80 | | | 275.0 | |
| Activity Description | Date/Time | Cht | Rate bbl/min | Volume bbl | | Pressure psig | | Comments |

Sold To #: 300721

Ship To #: 2889943

Quote #:

Sales Order #:

9607830

SUMMIT Version: 7.3.0030

Sunday, July 01, 2012 04:01:00

HALLIBURTON

Cementing Job Log

| | | # | | Stage | Total | Tubing | Casing | |
|--------------------|---------------------|---|---|-------|-------|--------|--------|---|
| Bump Plug | 06/28/2012 02:14 | | 2 | 90 | | | 785.0 | PLUG LANDED AT 290 PSI. PRESSURED UP TO 785 PSI. |
| Check Floats | 06/28/2012 02:16 | | | | | | | FLOATS HELD |
| End Job | 06/28/2012 02:18 | | | | | | | WELL WAS CIRCULATED BEFORE STARTING THE JOB. GOOD CIRCULATION THROUGHOUT THE JOB. PIPE WAS NOT RECIPROCATED. CIRCULATED 30 BBLS. OF CEMENT TO SURFACE. |
| Rig-Down Equipment | 06/28/2012 02:25 | | | | | | | THANK YOU FOR USING HALLIBURTON. BRANDON REEVES AND CREW. |

Sold To # : 300721

Ship To # :2889943

Quote # :

Sales Order # : 9607830

SUMMIT Version: 7.3.0030

Sunday, July 01, 2012 04:01:00

The Road to Excellence Starts with Safety

| | | | |
|---|--|-------------------------|------------------------|
| Sold To #: 300721 | Ship To #: 2889943 | Quote #: | Sales Order #: 9607830 |
| Customer: WPX ENERGY ROCKY MOUNTAIN LLC-EBUS | Customer Rep: Duniho, Al | | |
| Well Name: RWF | Well #: 442-31 | API/UWI #: 05-045-21047 | |
| Field: RULISON | City (SAP): RIFLE | County/Parish: Garfield | State: Colorado |
| Lat: N 39.486 deg. OR N 39 deg. 29 min. 8.387 secs. | Long: W 107.916 deg. OR W -108 deg. 5 min. 2.612 secs. | | |
| Contractor: CYCLONE 17 | Rig/Platform Name/Num: CYCLONE 17 | | |
| Job Purpose: Cement Surface Casing | | | |
| Well Type: Development Well | Job Type: Cement Surface Casing | | |
| Sales Person: MAYO, MARK | Srv Supervisor: REEVES, BRANDON | MBU ID Emp #: 287883 | |

Job Personnel

| HES Emp Name | Exp Hrs | Emp # | HES Emp Name | Exp Hrs | Emp # | HES Emp Name | Exp Hrs | Emp # |
|-------------------|---------|--------|---------------------|---------|--------|--------------------|---------|--------|
| DOUT, JACOB J | 7.0 | 430298 | KUKUS, CARLTON Dean | 7.0 | 458577 | MEYERS, GARY Wayne | 7.0 | 524819 |
| REEVES, BRANDON W | 7.0 | 287883 | | | | | | |

Equipment

| HES Unit # | Distance-1 way | HES Unit # | Distance-1 way | HES Unit # | Distance-1 way | HES Unit # | Distance-1 way |
|------------|----------------|------------|----------------|------------|----------------|------------|----------------|
| 10867425 | 60 mile | 10897891 | 60 mile | 11560046 | 60 mile | 11583931 | 60 mile |
| 11808841 | 60 mile | | | | | | |

Job Hours

| Date | On Location Hours | Operating Hours | Date | On Location Hours | Operating Hours | Date | On Location Hours | Operating Hours |
|------------|-------------------|-----------------|--|-------------------|-----------------|------|-------------------|-----------------|
| 06/27/2012 | 4 | 0 | 06/28/2012 | 3 | 2 | | | |
| TOTAL | | | Total is the sum of each column separately | | | | | |

Job

| Formation Name | Formation Depth (MD) | Top | Bottom | Form Type | Job depth MD | Job Depth TVD | Water Depth | Perforation Depth (MD) | From | To |
|----------------|----------------------|-----|--------|-----------|--------------|---------------|-------------------|------------------------|------|-------|
| | | | | BHST | 1182. ft | 1182. ft | | | | |
| | | | | | | | Wk Ht Above Floor | | | 8. ft |
| | | | | | | | | | | |

Job Times

| Date | Time | Time Zone |
|-----------------|-------|-----------|
| 27 - Jun - 2012 | 15:00 | MST |
| 27 - Jun - 2012 | 19:25 | MST |
| 28 - Jun - 2012 | 01:24 | MST |
| 28 - Jun - 2012 | 02:18 | MST |
| 28 - Jun - 2012 | 00:00 | MST |

Well Data

| Description | New / Used | Max pressure psig | Size in | ID in | Weight lbm/ft | Thread | Grade | Top MD ft | Bottom MD ft | Top TVD ft | Bottom TVD ft |
|-------------|------------|-------------------|---------|-------|---------------|--------|-------|-----------|--------------|------------|---------------|
|-------------|------------|-------------------|---------|-------|---------------|--------|-------|-----------|--------------|------------|---------------|

Tools and Accessories

| Type | Size | Qty | Make | Depth | Type | Size | Qty | Make | Depth | Type | Size | Qty | Make |
|--------------|------|-----|------|-------|-------------|------|-----|------|-------|----------------|--------|-----|------|
| Guide Shoe | | | | | Packer | | | | | Top Plug | 9.625" | 1 | |
| Float Shoe | | | | | Bridge Plug | | | | | Bottom Plug | | | |
| Float Collar | | | | | Retainer | | | | | SSR plug set | | | |
| Insert Float | | | | | | | | | | Plug Container | 9.625" | 1 | |
| Stage Tool | | | | | | | | | | Centralizers | | | |

Miscellaneous Materials

| Gelling Agt | Conc | Surfactant | Conc | Acid Type | Qty | Conc | % |
|---------------|------|------------|------|-----------|------|------|---|
| Treatment Fld | Conc | Inhibitor | Conc | Sand Type | Size | Qty | |

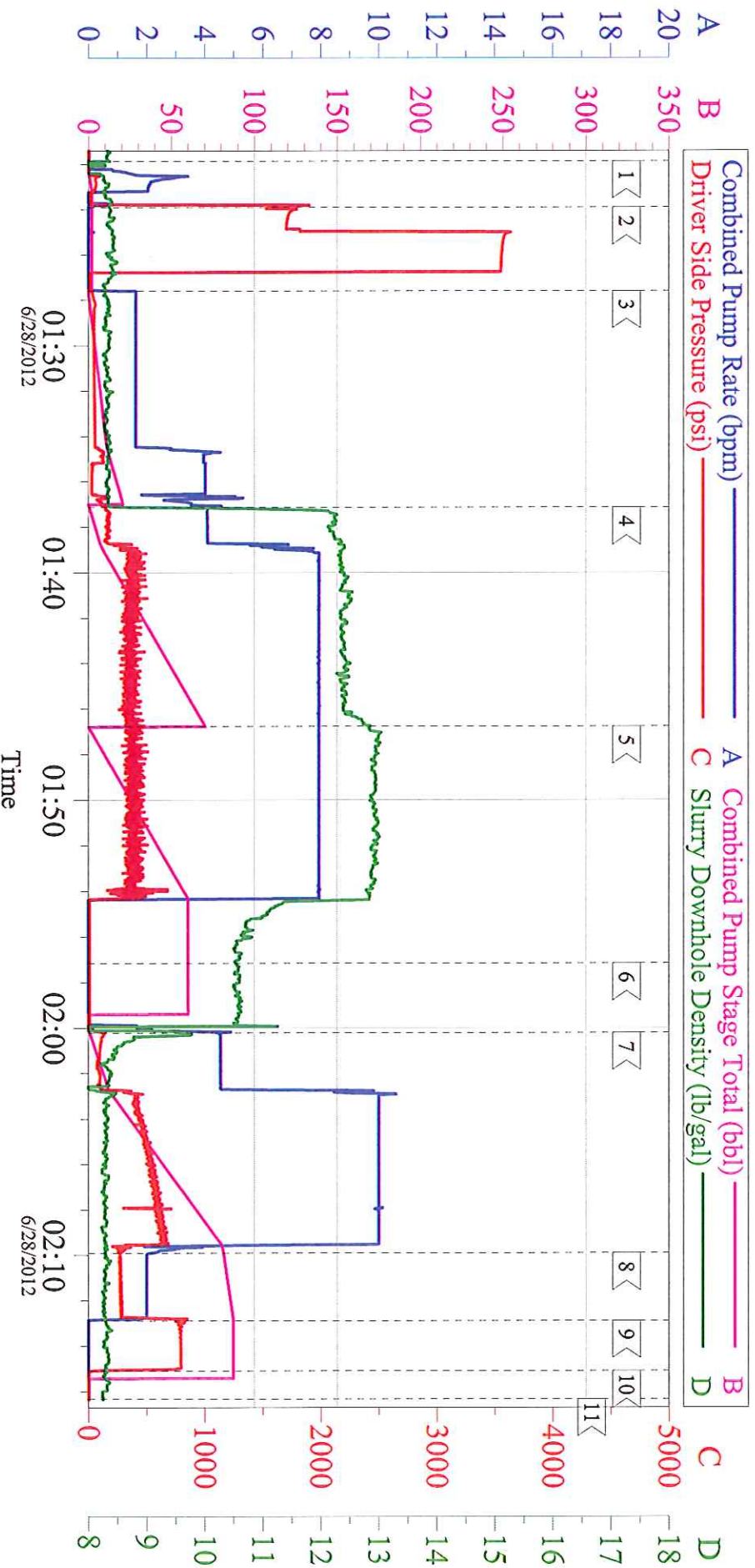
Fluid Data

| Stage/Plug #: 1 | Fluid # | Stage Type | Fluid Name | Qty | Qty uom | Mixing Density lbm/gal | Yield ft3/sk | Mix Fluid Gal/sk | Rate bbl/min | Total Mix Fluid Gal/sk |
|-----------------|---------|------------|------------|-----|---------|------------------------|--------------|------------------|--------------|------------------------|
|-----------------|---------|------------|------------|-----|---------|------------------------|--------------|------------------|--------------|------------------------|

| Stage/Plug #: 1 | Fluid # | Stage Type | Fluid Name | Qty | Qty uom | Mixing Density lbm/gal | Yield ft3/sk | Mix Fluid Gal/sk | Rate bbl/min | Total Mix Fluid Gal/sk |
|-----------------|---------|------------|------------|-----|---------|------------------------|--------------|------------------|--------------|------------------------|
|-----------------|---------|------------|------------|-----|---------|------------------------|--------------|------------------|--------------|------------------------|

| Stage/Plug #: 1 | | | | | | | | | |
|--|--------------------|-------------------------------|--------|-----------------------------------|------|---------------------|-------|-----------|-------|
| 1 | Fresh Water | | 20.00 | bbl | 8.33 | .0 | .0 | .0 | |
| 2 | VersaCem Lead | VERSACEM (TM) SYSTEM (452010) | 160.0 | sacks | 12.3 | 2.38 | 13.77 | | 13.77 |
| | 13.77 Gal | FRESH WATER | | | | | | | |
| 3 | VersaCem Tail | VERSACEM (TM) SYSTEM (452010) | 160.0 | sacks | 12.8 | 2.11 | 11.75 | | 11.75 |
| | 11.75 Gal | FRESH WATER | | | | | | | |
| 4 | Displacement Fluid | | 90.00 | bbl | 8.34 | .0 | .0 | .0 | |
| Calculated Values | | Pressures | | Volumes | | | | | |
| Displacement | 90.2 | Shut In: Instant | | Lost Returns | NO | Cement Slurry | 127.9 | Pad | |
| Top Of Cement | SURFACE | 5 Min | | Cement Returns | 30 | Actual Displacement | 90 | Treatment | |
| Frac Gradient | | 15 Min | | Spacers | 20 | Load and Breakdown | | Total Job | |
| Rates | | | | | | | | | |
| Circulating | | Mixing | 8 | Displacement | 10 | Avg. Job | | | |
| Cement Left In Pipe | Amount | 45.88 ft | Reason | Shoe Joint | | | | | |
| Frac Ring # 1 @ | ID | Frac ring # 2 @ | ID | Frac Ring # 3 @ | ID | Frac Ring # 4 @ | ID | | |
| The Information Stated Herein Is Correct | | | | Customer Representative Signature | | | | | |

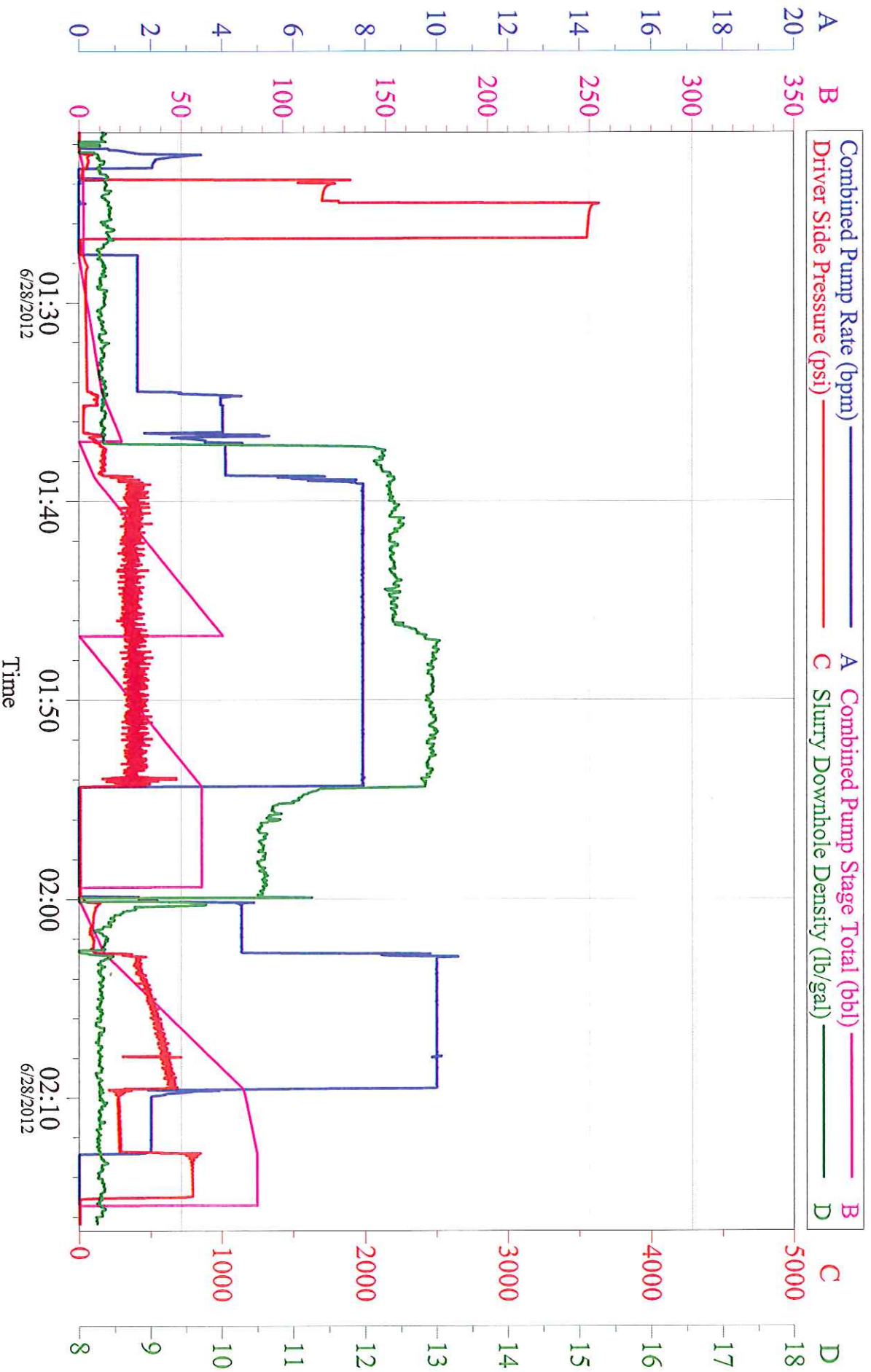
WPX 9 5/8" SURFACE RWF 442-31



| Local Event Log | | | | | | | | | | | |
|-----------------|-------------------|--------------|-------|--------------|------------------|----------|-------|-----|-----------------|----------|-------|
| Intersection | | Intersection | | Intersection | | | | | | | |
| 1 < | START JOB | 01:21:52 | 0.385 | 2 < | TEST LINES | 01:23:54 | 1561 | 3 < | PUMP H2O SPACER | 01:27:36 | 25.45 |
| 4 < | PUMP LEAD CEMENT | 01:37:08 | 147.1 | 5 < | PUMP TAIL CEMENT | 01:46:45 | 342.3 | 6 < | DROP TOP PLUG | 01:57:10 | 9.475 |
| 7 < | PUMP DISPLACEMENT | 02:00:13 | 143.9 | 8 < | SLOW RATE | 02:09:54 | 267.1 | 9 < | LAND PLUG | 02:12:53 | 752.3 |
| 10 < | CHECK FLOATS | 02:15:06 | 38.87 | 11 < | END JOB | 02:16:20 | 3.850 | | | | |

| | | |
|-----------------------------------|-------------------------|------------------------------|
| Customer: WPX | Job Date: 28-Jun-2012 | Sales Order #: 9607830 |
| Well Description: RWF 442-31 | Job Type: SURFACE | ADC Used: YES |
| Supervisor: BRANDON REEVES | Customer Rep. AL DUNHOO | Elite/Operator: S/CARL KUKUS |
| OptiCem v6.4.4 28-Jun-12 03:18 | | |

WPX 9 5/8" SURFACE RWF 442-31



Customer: WPX
Well Description: RWF 442-31
Supervisor: BRANDON REEVES

Job Date: 28-Jun-2012
Job Type: SURFACE
Customer Rep. AL DUNIHOO

Sales Order #: 9607830
ADC Used: YES
Elite/Operator: 5/CARL KUKUS