

The Road to Excellence Starts with Safety

Sold To #: 300721	Ship To #: 2891524	Quote #:	Sales Order #: 9572882
Customer: WPX ENERGY ROCKY MOUNTAIN LLC-EBUS	Customer Rep: Moore, Frank		
Well Name: RWF	Well #: 542-31	API/UWI #: 05-045-21048	
Field: RULISON	City (SAP): RIFLE	County/Parish: Garfield	State: Colorado
Lat: N 39.486 deg. OR N 39 deg. 29 min. 8.412 secs.	Long: W 107.916 deg. OR W -108 deg. 5 min. 2.702 secs.		
Contractor: CYCLONE 17	Rig/Platform Name/Num: CYCLONE 17		
Job Purpose: Cement Surface Casing			
Well Type: Development Well	Job Type: Cement Surface Casing		
Sales Person: MAYO, MARK	Srv Supervisor: KUKUS, CRAIG	MBU ID Emp #: 369124	

Job Personnel

HES Emp Name	Exp Hrs	Emp #	HES Emp Name	Exp Hrs	Emp #	HES Emp Name	Exp Hrs	Emp #
EICKHOFF, ROBERT Edward	0.0	495311	KEANE, JOHN Donovan	0.0	486519	KUKUS, CRAIG A	0.0	369124
YOUNG, JEREMY R	0.0	418013						

Equipment

HES Unit #	Distance-1 way	HES Unit #	Distance-1 way	HES Unit #	Distance-1 way	HES Unit #	Distance-1 way
10567589C	60 mile	10867094	60 mile	10897925	60 mile	11583928	60 mile
11808829	60 mile						

Job Hours

Date	On Location Hours	Operating Hours	Date	On Location Hours	Operating Hours	Date	On Location Hours	Operating Hours

TOTAL Total is the sum of each column separately

Job

Job Times

Formation Name	Formation Depth (MD)	Top	Bottom	Form Type	Job depth MD	Job Depth TVD	Water Depth	Perforation Depth (MD)	From	To	Called Out	Date	Time	Time Zone
				BHST	1212. m	1212. m					On Location	06 - Jul - 2012	02:00	MST
								Wk Ht Above Floor		4. m	Job Started	06 - Jul - 2012	08:02	MST
											Job Completed	06 - Jul - 2012	08:59	MST
											Departed Loc	06 - Jul - 2012	10:30	MST

Well Data

Description	New / Used	Max pressure MPa	Size mm	ID mm	Weight kg/m	Thread	Grade	Top MD m	Bottom MD m	Top TVD m	Bottom TVD m
-------------	------------	------------------	---------	-------	-------------	--------	-------	----------	-------------	-----------	--------------

Sales/Rental/3rd Party (HES)

Description	Qty	Qty uom	Depth	Supplier
R/A DENSOMETER W/CHART RECORDER,/JOB,ZI	1	JOB		
PORT. DATA ACQUIS. W/OPTICEM RT W/HES	1	EA		
ADC (AUTO DENSITY CTRL) SYS, /JOB,ZI	1	JOB		
PLUG,CMTG,TOP,9 5/8,HWE,8.16 MIN/9.06 MA	1	EA		

Tools and Accessories

Type	Size	Qty	Make	Depth	Type	Size	Qty	Make	Depth	Type	Size	Qty	Make
Guide Shoe					Packer					Top Plug			
Float Shoe					Bridge Plug					Bottom Plug			
Float Collar					Retainer					SSR plug set			
Insert Float										Plug Container			
Stage Tool										Centralizers			

Miscellaneous Materials

Gelling Agt	Conc	Surfactant	Conc	Acid Type	Qty	Conc	%
Treatment Fld	Conc	Inhibitor	Conc	Sand Type	Size	Qty	

Fluid Data

Stage/Plug #: 1

Fluid #	Stage Type	Fluid Name	Qty	Qty uom	Mixing Density kg/m3	Yield m3/sk	Mix Fluid m3/tonne	Rate m3/min	Total Mix Fluid m3/tonne
1	Fresh Water		20.00	bbl	8.33	.0	.0	.0	
2	VersaCem Lead	VERSACEM (TM) SYSTEM (452010)	160.0	sacks	12.3	2.38	13.75		13.75
3	VersaCem Tail	VERSACEM (TM) SYSTEM (452010)	160.0	sacks	12.8	2.11	11.75		11.75
11.75 Gal		FRESH WATER							
4	Displacement Fluid		92.00	bbl	8.34	.0	.0	.0	
Calculated Values		Pressures		Volumes					
Displacement		Shut In: Instant		Lost Returns		Cement Slurry		Pad	
Top Of Cement		5 Min		Cement Returns		Actual Displacement		Treatment	
Frac Gradient		15 Min		Spacers		Load and Breakdown		Total Job	
Rates									
Circulating		Mixing		Displacement		Avg. Job			
Cement Left In Pipe		Amount 0 ft	Reason	Shoe Joint					
Frac Ring # 1 @	ID	Frac ring # 2 @	ID	Frac Ring # 3 @	ID	Frac Ring # 4 @	ID		
The Information Stated Herein Is Correct				Customer Representative Signature					

The Road to Excellence Starts with Safety

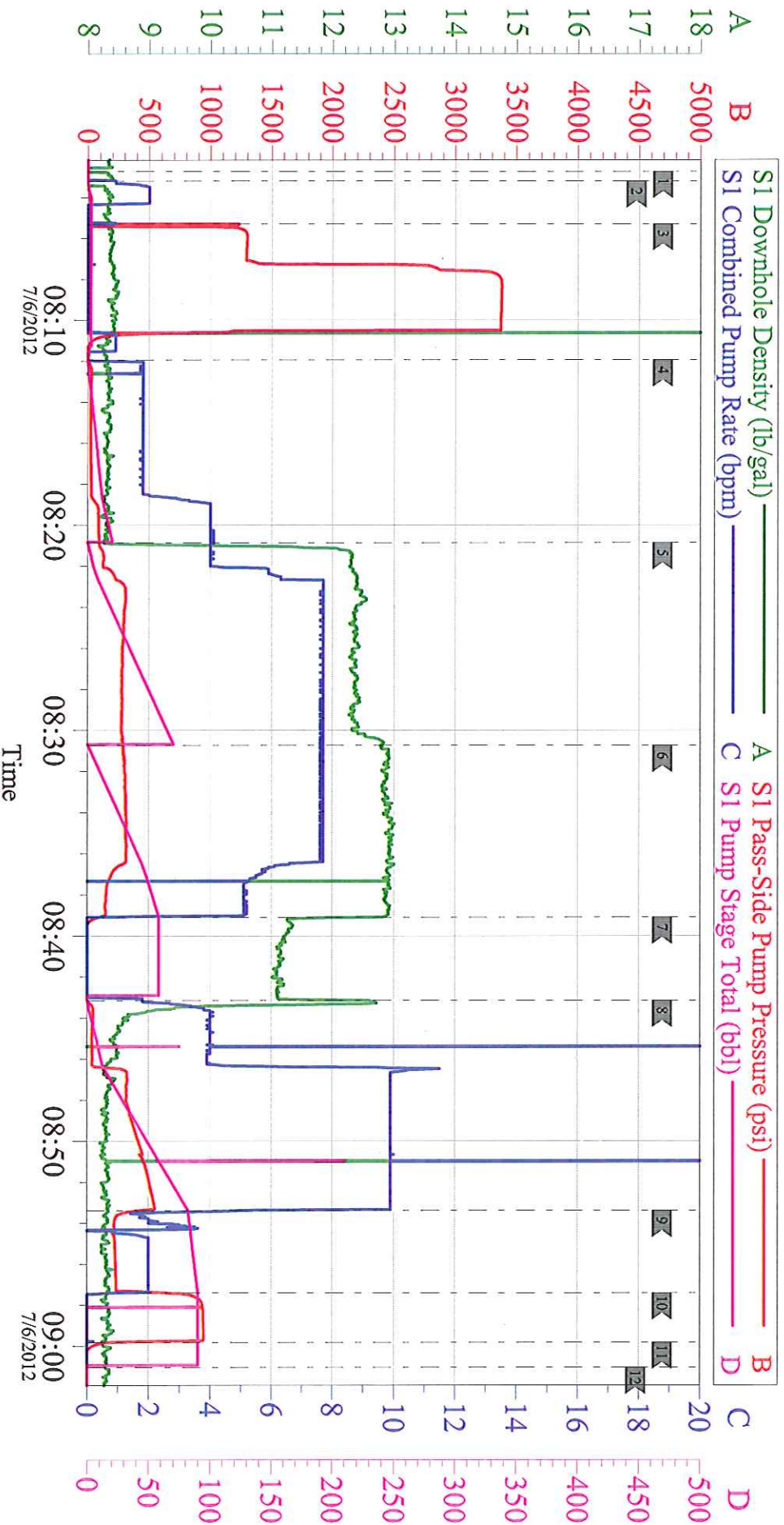
Sold To #: 300721	Ship To #: 2891524	Quote #:	Sales Order #: 9572882
Customer: WPX ENERGY ROCKY MOUNTAIN LLC-EBUS	Customer Rep: Moore, Frank		
Well Name: RWF	Well #: 542-31	API/UWI #: 05-045-21048	
Field: RULISON	City (SAP): RIFLE	County/Parish: Garfield	State: Colorado
Legal Description:			
Lat: N 39.486 deg. OR N 39 deg. 29 min. 8.412 secs.		Long: W 107.916 deg. OR W -108 deg. 5 min. 2.702 secs.	
Contractor: CYCLONE 17	Rig/Platform Name/Num: CYCLONE 17		
Job Purpose: Cement Surface Casing		Ticket Amount:	
Well Type: Development Well	Job Type: Cement Surface Casing		
Sales Person: MAYO, MARK	Srvc Supervisor: KUKUS, CRAIG	MBU ID Emp #: 369124	

Activity Description	Date/Time	Cht #	Rate m3/ min	Volume m3		Pressure MPa		Comments
				Stage	Total	Tubing	Casing	
Call Out	07/05/2012 19:30							
Depart Yard Safety Meeting	07/05/2012 21:30							SAFETY MEETING INVOLVING THE ENTIRE CMT CREW
Arrive At Loc	07/05/2012 23:45							RIG DRILLING
Assessment Of Location Safety Meeting	07/06/2012 00:10							ASSESSMENT OF LOCATION INVOLVING THE ENTIRE CMT CREW
Circulate Well	07/06/2012 06:45							RIG CIRCULATE WELL DURING RIG UP
Pre-Rig Up Safety Meeting	07/06/2012 07:00							SAFETY MEETING INVOLVING THE ENTIRE CMT CREW
Rig-Up Equipment	07/06/2012 07:10							RIG UP TO STAND PIPE / WATER LINES FROM UP RIGHT / RIG UP FLOOR
Pre-Job Safety Meeting	07/06/2012 07:45							SAFETY MEETING INVOLVING EVERYONE ON LOCATION
Start Job	07/06/2012 08:02							TD 1212 FT TP 1202.87 FT SJ 45.16 FT OH 13.5 IN MUD WT 10.3 # PIPE 9 5/8 IN 32.3 #
Other	07/06/2012 08:03		2	2			47.0	FILL LINES WITH FRESH WATER
Pressure Test	07/06/2012 08:05		0.5			3500. 0		PRESSURE TEST GOOD
Pump Spacer 1	07/06/2012 08:11		4	20			109.0	FRESH WATER SPACER

Cementing Job Log

Activity Description	Date/Time	Cht #	Rate m3/min	Volume m3		Pressure MPa		Comments
				Stage	Total	Tubing	Casing	
Pump Lead Cement	07/06/2012 08:20		8	67.8			327.0	PUMP 160 SKS LEAD CEMENT AT 12.3 PPG 2.38 Y 13.75 GAL/SKS
Pump Tail Cement	07/06/2012 08:30		7.5	60.1			328.0	PUMP 160 SKS TAIL CEMENT 12.8 PPG 2.11Y 11.75 GAL/SKS
Shutdown	07/06/2012 08:39							SHUT DOWN / READY TUB FOR WASH ON TOP OF PLUG /DROP PLUG
Drop Top Plug	07/06/2012 08:40							PLUG LEFT THE PLUG CONTAINER
Pump Displacement	07/06/2012 08:43		10	91.1			564.0	PUMP H2O DISPLACEMENT
Slow Rate	07/06/2012 08:53		2	81			240.0	SLOW RATE TO 2 BBL MIN LAST 10 BBLS
Bump Plug	07/06/2012 08:57		2	91.1			940.0	PLUG LANDED AT 250 PSI
Check Floats	07/06/2012 08:59							FLOATS HELD / GOT 1/2 BBL BACK TO TANKS
End Job	07/06/2012 09:01							HAD GOOD RETURNS THRU OUT THE JOB / CEMENT TO SURFACE TOTAL 20 BBLS
Pre-Rig Down Safety Meeting	07/06/2012 09:05							SAFETY MEETING INVOLVING THE ENTIRE CMT CREW
Rig-Down Equipment	07/06/2012 09:15							RIG DOWN EQUIP / RACK UP / FINAL WASH UP TO PIT
Safety Meeting - Departing Location	07/06/2012 10:15							SAFETY MEETING INVOLVING THE ENTIRE CMT CREW
Comment	07/06/2012 10:30							THANK YOU FOR USING HALLIBURTON, CRAIG KUKUS AND CREW

WPX ROCKY MOUNTAIN REF 542-31 SURFACE 9 5/8 CYCLONE 17



Local Event Log

1 START JOB	2 PRIME LINES	3 PRESSURE TEST LINES
4 PUMP H2O SPACER	5 PUMP LEAD CEMENT	6 PUMP TAIL CEMENT
7 SHUT DOWN / DROP PLUG	8 PUMP H2O DISPLACEMENT/WASH ON TOP	9 SLOW RATE
10 BUMP PLUG	11 CHECK FLOATS	12 END JOB
08:02:43	08:03:12	08:05:17
08:11:57	08:20:52	08:30:44
08:39:05	08:43:09	08:53:23
08:57:25	08:59:49	09:01:03

Customer: WPX	Job Date: 06-Jul-2012	Sales Order #: 9572882	HALLIBURTON
Well Description: RWF 542-31	Job Type: SURFACE	ADC Used: YES	OptiCem v6.4.8
Company Rep: AL DUNIHOO	Cement Supervisor: CRAIG KUKUS	Elite #/Operator: E-3 ROB EICKHOFF	06-Jul-12 09:26