
KINDER MORGAN INC

DWD 1

Montezuma County , Colorado

Recement Service

22-Sep-2012

Post Job Report

The Road to Excellence Starts with Safety

Sold To #: 320986		Ship To #: 2945402		Quote #:		Sales Order #: 9834854	
Customer: KINDER MORGAN INC				Customer Rep: Cawthorn, Valerie			
Well Name: DWD			Well #: 1		API/UWI #: 05-033-06078		
Field:		City (SAP): DOVE CREEK			County/Parish: Montezuma		State: Colorado
Legal Description: Section 19 Township 40N Range 17W							
Contractor: Nabors 441			Rig/Platform Name/Num: Nabors 441				
Job Purpose: Recement Service							
Well Type: Producing Well			Job Type: Recement Service				
Sales Person: KEERAN, RYAN			Srvc Supervisor: WOOD, BRANDON			MBU ID Emp #: 412753	
Job Personnel							
HES Emp Name	Exp Hrs	Emp #	HES Emp Name	Exp Hrs	Emp #	HES Emp Name	Exp Hrs
AYERS, JACOB Cedric	17	487729	JOJOLA, LEMONT	17	418802	WOOD, BRANDON M	17
Equipment							
HES Unit #	Distance-1 way	HES Unit #	Distance-1 way	HES Unit #	Distance-1 way	HES Unit #	Distance-1 way
Job Hours							
Date	On Location Hours	Operating Hours	Date	On Location Hours	Operating Hours	Date	On Location Hours
TOTAL		Total is the sum of each column separately					
Job				Job Times			
Formation Name				Date	Time	Time Zone	
Formation Depth (MD)	Top	Bottom		Called Out	22 - Sep - 2012	00:01	MST
Form Type	BHST			On Location	22 - Sep - 2012	03:00	MST
Job depth MD	2500. ft		Job Depth TVD	2381. ft	Job Started	22 - Sep - 2012	17:48
Water Depth			Wk Ht Above Floor	5. ft	Job Completed	22 - Sep - 2012	18:45
Perforation Depth (MD)	From	To		Departed Loc	22 - Sep - 2012	20:00	MST
Well Data							
Description	New / Used	Max pressure psig	Size in	ID in	Weight lbm/ft	Thread	Grade
10 3/4" Surface Casing	Unknown		10.75	9.95	45.5		K-55
7 5/8" Production Casing	Unknown		7.625	6.969	26.4		K-55
Sales/Rental/3 rd Party (HES)							
Description				Qty	Qty uom	Depth	Supplier
SUGAR, GRANULATED, IMPERIAL				25	LB		
Tools and Accessories							
Type	Size	Qty	Make	Depth	Type	Size	Qty
Guide Shoe					Packer		
Float Shoe					Bridge Plug		
Float Collar					Retainer		
Insert Float							
Stage Tool							
Miscellaneous Materials							
Gelling Agt		Conc		Surfactant		Conc	
Treatment Fld		Conc		Inhibitor		Conc	
				Acid Type		Qty	
				Sand Type		Size	

Fluid Data										
Stage/Plug #: 1										
Fluid #	Stage Type	Fluid Name	Qty	Qty uom	Mixing Density lbm/gal	Yield ft ³ /sk	Mix Fluid Gal/sk	Rate bbl/min	Total Mix Fluid Gal/sk	
1	Fresh Water Spacer		20.00	bbl	8.33	.0	.0	.0		
2	Primary Cement	POZ STANDARD 50/50 - SBM (12308)	435.0	sacks	13.5	1.3	5.73		5.73	
2 %		CALCIUM CHLORIDE - HI TEST PELLET (100005053)								
0.1 %		CFR-3, W/O DEFOAMER, 50 LB SK (100003653)								
5.729 Gal		FRESH WATER								
3	Displacement		17.70	bbl	8.33	.0	.0	.0		
Calculated Values		Pressures		Volumes						
Displacement	17.7	Shut In: Instant		Lost Returns	NO	Cement Slurry	100.7	Pad		
Top Of Cement	UNK	5 Min		Cement Returns	NO	Actual Displacement	17.7	Treatment		
Frac Gradient		15 Min		Spacers	20	Load and Breakdown		Total Job		
Rates										
Circulating		Mixing		Displacement		Avg. Job				
Cement Left In Pipe	Amount	119 ft	Reason	Shoe Joint						
Frac Ring # 1 @	ID		Frac ring # 2 @	ID		Frac Ring # 3 @	ID		Frac Ring # 4 @	ID
The Information Stated Herein Is Correct				Customer Representative Signature						

The Road to Excellence Starts with Safety

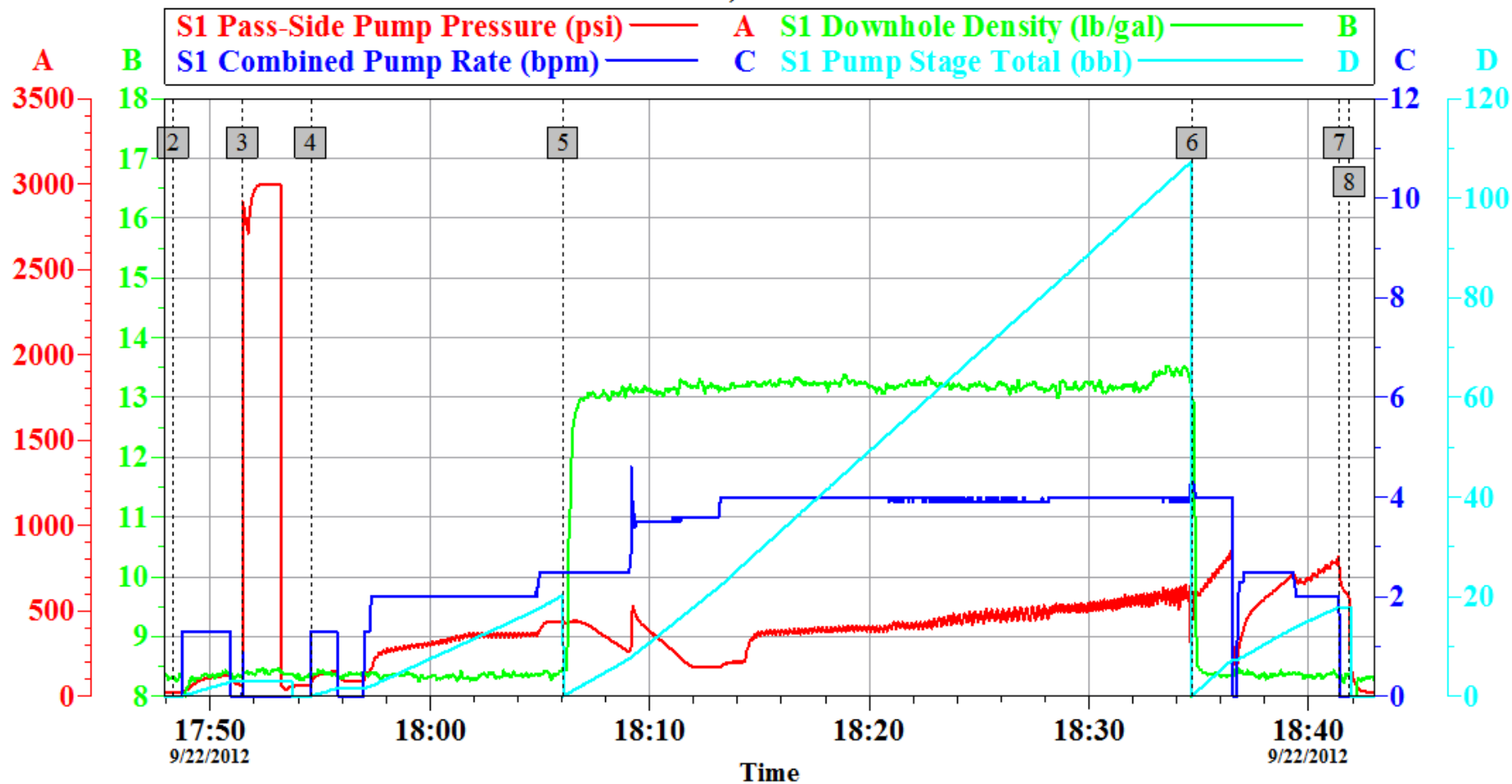
Sold To #: 320986		Ship To #: 2945402		Quote #:		Sales Order #: 9834854	
Customer: KINDER MORGAN INC				Customer Rep: Cawthorn, Valerie			
Well Name: DWD			Well #: 1		API/UWI #: 05-033-06078		
Field:		City (SAP): DOVE CREEK		County/Parish: Montezuma		State: Colorado	
Legal Description: Section 19 Township 40N Range 17W							
Lat: N 0 deg. OR N 0 deg. 0 min. 0 secs.				Long: E 0 deg. OR E 0 deg. 0 min. 0 secs.			
Contractor: Nabors 441			Rig/Platform Name/Num: Nabors 441				
Job Purpose: Recement Service						Ticket Amount:	
Well Type: Producing Well			Job Type: Recement Service				
Sales Person: KEERAN, RYAN			Srv Supervisor: WOOD, BRANDON			MBU ID Emp #: 412753	

Activity Description	Date/Time	Cht #	Rate bbl/min	Volume bbl		Pressure psig		Comments
				Stage	Total	Tubing	Casing	
Call Out	09/22/2012 00:01							
Depart Yard Safety Meeting	09/22/2012 00:55							SAFETY MEETING INVOLVING THE CMT CREW
Crew Leave Yard	09/22/2012 01:00							
Arrive At Loc	09/22/2012 03:00							1- F-450 11583925, 1- RED TIGER PUMP TRUCK 11324578, 1- 660 BULK TRUCK TRAILERS 10025024
Assessment Of Location Safety Meeting	09/22/2012 03:05							ASSESSMENT OF LOCATION INVOLVING THE CMT CREW
Pre-Rig Up Safety Meeting	09/22/2012 16:25							SAFETY MEETING INVOLVING THE ENTIRE CMT/ RIG CREW
Rig-Up Equipment	09/22/2012 16:30							
Pre-Job Safety Meeting	09/22/2012 17:30							SAFETY MEETING INVOLVING EVERYONE ON LOCATION
Start Job	09/22/2012 17:48							DP 3 1/2 IF 13.3 #, RETAINER SET @ 2381 FT, 7 5/8 26.4 #, HOLES 2500-2501 FT,
Test Lines	09/22/2012 17:51		1		0.3		3000.0	PRESSURE TEST GOOD TO 3000 PSI
Pump Spacer 1	09/22/2012 17:54		2		20		360.0	PUMP 20 BBLS H2O @ 2 BPM

Activity Description	Date/Time	Cht #	Rate bbl/min	Volume bbl		Pressure psig		Comments
				Stage	Total	Tubing	Casing	
Pump Cement	09/22/2012 18:06		4		100.7		440.0	435 SKS, 1.3 YLD, 5.73 GAL H2O/SK, 100.7 BBLS @ 13.5 #, 59.3 BBLS H2O REQ
Pump Displacement	09/22/2012 18:34		3		17.7		611.0	CALCULATED 17.7 BBLS DP CAP, PUMPED 17.7 BBLS TO LEAVE NO CEMENT ON TOP OF RETAINER
Shutdown	09/22/2012 18:41						815.0	SHUTDOWN TO STING OUT AND PULL OUT OF HOLE
Open Bypass / Sting Out	09/22/2012 18:42						572.0	STING OUT OF RETAINER AND RIG GOING TO REVERSE OUT.
End Job	09/22/2012 18:45							
Pre-Rig Down Safety Meeting	09/22/2012 18:50							SAFETY MEETING INVOLVING THE CMT/RIG CREW
Rig-Down Equipment	09/22/2012 18:55							
Safety Meeting - Departing Location	09/22/2012 19:55							SAFETY MEETING INVOLVING THE CMT CREW
Depart Location for Service Center or Other Site	09/22/2012 20:00							THANK YOU FOR USING HALLIBURTON, BRANDON WOOD AND CREW

KINDER MORGAN

DWD # 1, RECEMENT



Global Event Log

2	Start Job	17:48:19	3	Test Lines	17:51:28	4	Pump Spacer 1	17:54:35
5	Pump Cement	18:06:03	6	Pump Displacement	18:34:41	7	Shutdown	18:41:24
8	Sting out	18:41:51						

Customer: KINDER MORGAN
Well Description: DWD # 1
Customer Rep: CURTIS

Job Date: 22-Sep-2012
Job type: RECEMENT
Service Supervisor: BRANDON WOOD

Sales Order #: 9834854
ADC Used: YES
Operator/ Pump: BRANDON, 11324578

OptiCem v6.3.4
22-Sep-12 19:42