

HALLIBURTON

SALES ORDER

Halliburton Energy Services, Inc.

Sales Order Number: 9934471

Sales Order Date: November 03, 2012

SOLD TO:

APOLLO OPERATING
1538 WAZEE ST #200
DENVER CO 80202
USA

Rig Name:

Well/Rig Name: APOLLO MURDOCK 24-34,WELD
Company Code: 1100
Customer P.O. No.: n/a
Shipping Point: Brighton, CO, USA
Sales Office: Rocky Mountains BD
Well Type: Gas
Well Category: Development
Service Location: 0201
Payment Terms: Net 20 days from Invoice date
Ticket Type: Services
Order Type: ZOH

SHIP TO:

APOLLO MURDOCK 24-34,WELD
MURDOCK 24-34
N/A
JOHNSTOWN CO 80534
USA

Material	Description	QTY	UOM	Base Amount	Unit Amount	Gross Amount	Discount	Net Amount
374609	CMT CASING EQUIPMENT BOM CMT CASING EQUIPMENT BOM /	1.00	JOB					
100004879	SHOE,FLT,4-1/2 8RD,K55,2-3/4 SHOE, FLOAT, 4-1/2 8RD, K- 55, 2-3/4 / SUPER SEAL II VALVE	1.000	EA		599.00	599.00	359.40-	239.60
100004752	CLR,FLT,4-1/2 8RD 9.5- COLLAR,FLOAT, 4-1/2 8RD 9.5-13.5 / LBS/FT, 2-3/4 SUPER SEAL II VALVE	1.000	EA		700.00	700.00	420.00-	280.00
100004473	CTRZR ASSY,API,4 1/2 CSG X 7 CENTRALIZER ASSEMBLY, API, 4 1/2 CASING / X 7 7/8 HOLE, HINGED, WITH WELDED BOWS	35.000	EA		126.00	4,410.00	2,646.00-	1,764.00
100004622	CLP,LIM,4 1/2,HNGD,FRIC'T CLAMP, LIMIT, 4 1/2, HINGED, FRICTION / GRIP, WITH DRAW BOLT	2.000	EA		44.20	88.40	53.04-	35.36
100005045	KIT,HALL WELD-A	1.000	EA		74.30	74.30	44.58-	29.72
101241019	PLUG,CMTG,TOP,4-1/2,HWE,3.65	1.000	EA		186.00	186.00	111.60-	74.40

HALLIBURTON

Halliburton Energy Services, Inc.

Sales Order Number: 9934471

Sales Order Date: November 03, 2012

Material	Description	QTY	UOM	Base Amount	Unit Amount	Gross Amount	Discount	Net Amount
101240191	PLUG, CEMENTING, TOP, 4 1/2, HWE, 3.65 MIN/4.14 MAX CASING ID, / SYNTHETIC SERVICE	1.000	EA		186.00	186.00	111.60-	74.40
2	PLUG,CMTG,BOT,4 1/2,HWE,3.65 / PLUG, CEMENTING, BOTTOM, 4 1/2, HWE, / 3.65 MIN/4.14 MAX CASING ID, SYNTHETIC / SERVICE	60.000	MI		5.76	345.60	207.36-	138.24
	MILEAGE FOR CEMENTING CREW 000-119 Number of Units	1	unit					
86954	ZI FUEL SURCHG-CARS/PICKUPS<1 1/2TON FUEL SURCHG-CARS/PICKUPS<1 1/2TON/PER/MI Number of Units	60.000	MI		0.23	13.80		13.80
	Number of Units	1	unit					
SALES ORDER AMOUNT						6,603.10	3,953.58-	
SALES ORDER TOTAL						6,603.10	3,953.58-	2,649.52
Sales Tax - State								72.43
Total Weight: 340.24 LB								2,721.95
								US Dollars

INVOICE INSTRUCTIONS:

Operator Name:
Customer Agent:

Halliburton Approval: X _____
Customer Signature: X _____

Field Ticket

Field Ticket Number: 9942621		Field Ticket Date: Saturday, November 03, 2012	
Bill To: APOLLO OPERATING 1538 WAZEE ST #200 DENVER, CO 80202		Job Name: Murdock Order Type: Streamline Order (ZOH) Well Name: Murdock 24-34 Company Code: 1100 Customer PO No.: NA Shipping Point: Brighton, CO, USA Sales Office: Rocky Mountains BD Well Type: Gas Well Category: Development	
Ship To: APOLLO MURDOCK 24-34,WELD MURDOCK 24-34 2961316 N/A JOHNSTOWN, CO 80534			

Material	Description	QTY	UOM	Base Amt	Unit Amt	Gross Amount	Discount	Net Amount
7523	CMT PRODUCTION CASING BOM	1	JOB	0.00	0.00	0.00		0.00
16091	ZI - PUMPING CHARGE	1	EA	0.00	9,081.00	9,081.00	61%	3,541.59
	DEPTH	7816						
	FEET/METERS (FT/M)		FT					
432904	CMT, ROCKIES SG SETUP	1	EA			10,604.00	55.59%	4,708.96
432905	CMT, ROCKIES SG MILEAGE	64	MI			1,665.28	59.41%	676.01
	Number of Units	1						
432906	CMT, ROCKIES SG DELIVERY	31.36	TNM			8,402.02	59.76%	3,380.86
	NUMBER OF TONS	31.36						
528788	MUD FLUSH III	24	BBL	0.00	94.45	2,266.80	61%	884.05
452981	EXTENDACEM (TM) SYSTEM	340	SK			21,703.41	61.1%	8,464.32
452963	FRACCEM (TM) SYSTEM	300	SK			20,445.67	61.1%	7,973.82
101985045	CHEM, CLA-WEB - TOTE	8	GAL	0.00	474.30	3,794.40	61%	1,479.82
Totals					USD	77,962.58	46,853.15	31,109.43

Halliburton Rep: JUSTIN WHEELER

Customer Agent: Chris Montoya

Halliburton Approval

Field Ticket

Field Ticket Number: 9942621		Field Ticket Date: Saturday, November 03, 2012	
Bill To: APOLLO OPERATING 1538 WAZEE ST #200 DENVER, CO 80202		Job Name: Murdock Order Type: Streamline Order (ZOH) Well Name: Murdock 24-34 Company Code: 1100 Customer PO No.: NA Shipping Point: Brighton, CO, USA Sales Office: Rocky Mountains BD Well Type: Gas Well Category: Development	
Ship To: APOLLO MURDOCK 24-34, WELD MURDOCK 24-34 2961316 N/A JOHNSTOWN, CO 80534			

Material	Description	QTY	UOM	Base Amt	Unit Amt	Gross Amount	Discount	Net Amount
----------	-------------	-----	-----	----------	----------	--------------	----------	------------

THIS OUTPUT DOES NOT INCLUDE TAXES. APPLICABLE SALES TAX WILL BE BILLED ON THE FINAL INVOICE.
CUSTOMER HEREBY ACKNOWLEDGES RECEIPT OF THE MATERIALS AND SERVICES DESCRIBED ABOVE AND ON THE ATTACHED DOCUMENTS.

X

FIELD TICKET TOTAL: USD

31,109.43

Customer Signature

Was our HSE performance satisfactory? Y or N
(Health, Safety, Environment)

Were you satisfied with our Equipment? Y or N

Were you satisfied with our people? Y or N

Comments

Did we provide job DVA above our normal service today? Y or N
Please provide details:

Hours: _____

Other: _____

Customer Initials: _____

The Road to Excellence Starts with Safety

Sold To #: 353960	Ship To #: 2961316	Quote #:	Sales Order #: 9942621
Customer: APOLLO OPERATING		Customer Rep: Montoya, Chris	
Well Name: Murdock	Well #: 24-34	API/UWI #: 05-069-06408	
Field:	City (SAP): JOHNSTOWN	County/Parish: Weld	State: Colorado
Lat: N 40.351 deg. OR N 40 deg. 21 min. 5.04 secs.		Long: W 104.995 deg. OR W -105 deg. 0 min. 18.288 secs.	
Contractor: Ensign	Rig/Platform Name/Num: 136		
Job Purpose: Cement Production Casing			
Well Type: Development Well	Job Type: Cement Production Casing		
Sales Person: AARON, WESLEY	Srvc Supervisor: WHEELER, JUSTIN	MBU ID Emp #: 196470	

Job Personnel

HES Emp Name	Exp Hrs	Emp #	HES Emp Name	Exp Hrs	Emp #	HES Emp Name	Exp Hrs	Emp #
BURGESS, CODY Alan	4.5	511446	HETZLER, JEFFREY Charles	4.5	527677	IPSON, TIMOTHY J	4.5	485018
WHEELER, JUSTIN W	4.5	196470						

Equipment

HES Unit #	Distance-1 way	HES Unit #	Distance-1 way	HES Unit #	Distance-1 way	HES Unit #	Distance-1 way
11398319	32 mile	11532299	32 mile	11542778	32 mile	11605599	32 mile
11764052	32 mile	11764739	32 mile				

Job Hours

Date	On Location Hours	Operating Hours	Date	On Location Hours	Operating Hours	Date	On Location Hours	Operating Hours
11-3-12	4.5	3.5						
TOTAL	Total is the sum of each column separately							

Job

Job Times

Formation Name					Date	Time	Time Zone
Formation Depth (MD)	Top		Bottom		Called Out	03 - Nov - 2012	03:30 MST
Form Type		BHST			On Location	03 - Nov - 2012	07:30 MST
Job depth MD	7816. ft	Job Depth TVD	7816. ft		Job Started	03 - Nov - 2012	09:32 MST
Water Depth		Wk Ht Above Floor			Job Completed	03 - Nov - 2012	11:06 MST
Perforation Depth (MD)	From		To		Departed Loc	03 - Nov - 2012	12:00 MST

Well Data

Description	New / Used	Max pressure psig	Size in	ID in	Weight lbm/ft	Thread	Grade	Top MD ft	Bottom MD ft	Top TVD ft	Bottom TVD ft
Open Hole Section				7.875				650.	7816.	650.	7816.
Production Casing	New		4.5	4.	11.6		P-110	.	7816.	.	7816.
Surface Casing	Used		8.625	8.097	24.		J-55	.	650.	.	650.

Tools and Accessories

Type	Size	Qty	Make	Depth	Type	Size	Qty	Make	Depth	Type	Size	Qty	Make
Guide Shoe					Packer					Top Plug	4 1/2"	1	HWE
Float Shoe	4 1/2"	1		7816'	Bridge Plug					Bottom Plug	4 1/2"	1	HWE
Float Collar	4 1/2"	1		7800'	Retainer					SSR plug set			
Insert Float										Plug Container			
Stage Tool										Centralizers			

Miscellaneous Materials

Gelling Agt		Conc		Surfactant		Conc		Acid Type		Qty		Conc	%
Treatment Fld		Conc		Inhibitor		Conc		Sand Type		Size		Qty	

Fluid Data

Stage/Plug #: 1

Fluid #	Stage Type	Fluid Name	Qty	Qty uom	Mixing Density lbm/gal	Yield ft ³ /sk	Mix Fluid Gal/sk	Rate bbl/min	Total Mix Fluid Gal/sk
1	Clay-Web Water Spacer	CLA-WEB - TOTE (101985045)	20.00	bbl	8.33	.0	.0	.0	1 Gal.
2	MUD FLUSH III	MUD FLUSH III - SBM (528788)	24.00	bbl	8.4	.0	.0	.0	
3	Clay-Web Water Spacer	CLA-WEB - TOTE (101985045)	20.00	bbl	8.33	.0	.0	.0	1 Gal.
4	EXTENDACEM 11.3#	EXTENDACEM (TM) SYSTEM (452981)	340.0	sacks	11.3	2.46	14.1	6.0	14.1
	14.101 Gal	FRESH WATER							
5	FracCem 923	FRACCEM (TM) SYSTEM (452963)	300.0	sacks	13.5	1.74	8.29	6.0	8.29
	8.289 Gal	FRESH WATER							
6	ClayWeb III		6.00	Gal	8.33	.0	.0	.0	
	2.5 gal/Mgal	CLA-WEB - TOTE (101985045)							
Calculated Values		Pressures		Volumes					
Displacement	121	Shut In: Instant	1410	Lost Returns	No	Cement Slurry	241.4	Pad	
Top Of Cement		5 Min		Cement Returns	No	Actual Displacement	121	Treatment	
Frac Gradient		15 Min		Spacers	64 bbls	Load and Breakdown		Total Job	
Rates									
Circulating		Mixing		Displacement		Avg. Job			
Cement Left In Pipe	Amount	16 ft	Reason	Shoe Joint					
Frac Ring # 1 @	ID	Frac ring # 2 @	ID	Frac Ring # 3 @	ID	Frac Ring # 4 @	ID		
The Information Stated Herein Is Correct				Customer Representative Signature					

The Road to Excellence Starts with Safety

Sold To #: 353960	Ship To #: 2961316	Quote #:	Sales Order #: 9942621
Customer: APOLLO OPERATING		Customer Rep: Montoya, Chris	
Well Name: Murdock		Well #: 24-34	API/UWI #: 05-069-06408
Field:	City (SAP): JOHNSTOWN	County/Parish: Weld	State: Colorado
Legal Description:			
Lat: N 40.351 deg. OR N 40 deg. 21 min. 5.04 secs.		Long: W 104.995 deg. OR W -105 deg. 0 min. 18.288 secs.	
Contractor: Ensign		Rig/Platform Name/Num: 136	
Job Purpose: Cement Production Casing			Ticket Amount:
Well Type: Development Well		Job Type: Cement Production Casing	
Sales Person: AARON, WESLEY	Srcv Supervisor: WHEELER, JUSTIN		MBU ID Emp #: 196470

Activity Description	Date/Time	Cht #	Rate bbl/ min	Volume bbl		Pressure psig		Comments
				Stage	Total	Tubing	Casing	
Depart from Service Center or Other Site	11/03/2012 06:30							
Arrive At Loc	11/03/2012 07:30							
Safety Meeting - Pre Rig-Up	11/03/2012 08:30							
Test Lines	11/03/2012 09:33							Pressure Test Lines to 3500 PSI (Water Provided By Rig, Tested Ok for Mixing Cement)
Drop Bottom Plug	11/03/2012 09:35							Bottom Plug Loaded in Casing, Prior to Stabbing Plug Container
Pump Spacer	11/03/2012 09:37		3	20			230.0	Pump 20 bbls Clay-Web Water Spacer
Pump Spacer	11/03/2012 09:41		3	24			265.0	Pump 24 bbls Mud Flush
Pump Spacer	11/03/2012 09:49		3	20			365.0	Pump 20 bbls Clay-Web Water Spacer
Pump Lead Cement	11/03/2012 09:55		4	149			460.0	Mix and Pump 340 sks ExtendaCem Cement @ 11.3 lb/gal (Density Verified by Pressurized Scales)
Pump Tail Cement	11/03/2012 10:15		7	92.4			185.0	Mix and Pump 300 sks FracCem Cement @ 13.5 lb/gal (Density Verified By Pressurized Scales)
Clean Lines	11/03/2012 10:32			10				Wash Pumps and Lines to Pit
Drop Top Plug	11/03/2012 10:37							Shut-Down, Drop Top Plug (Top Plug Pre-Loaded in Plug Container)

Sold To # : 353960

Ship To # : 2961316

Quote # :

Sales Order # : 9942621

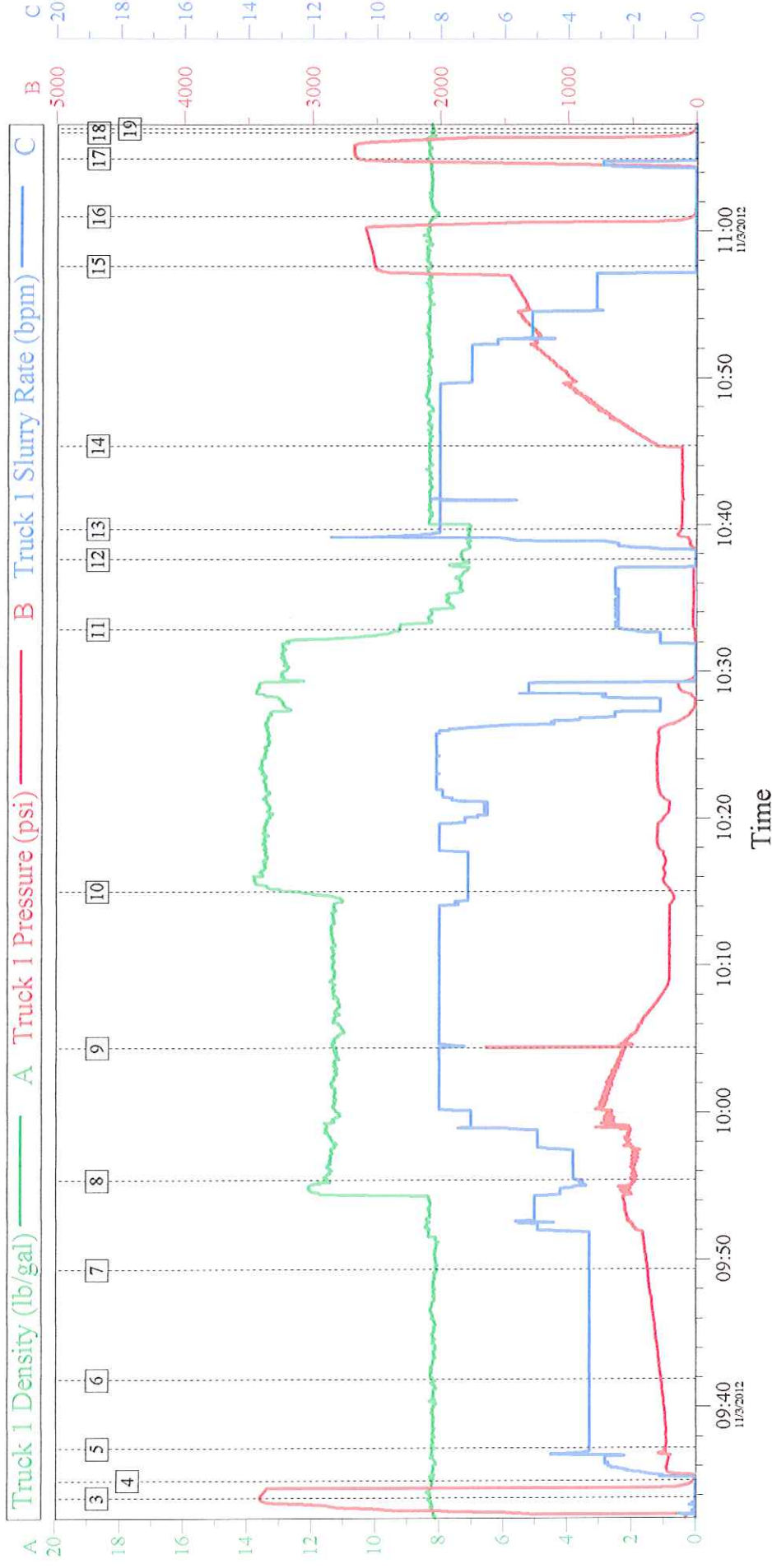
SUMMIT Version: 7.20.130

Saturday, November 03, 2012 11:31:00

Cementing Job Log

Activity Description	Date/Time	Cht #	Rate bbl/min	Volume bbl		Pressure psig		Comments
				Stage	Total	Tubing	Casing	
Pump Displacement - Start	11/03/2012 10:39		8	0			115.0	Pump ClayWeb Water Displacement
Pump Displacement - End	11/03/2012 10:57		3	121			1420.0	Good Returns Throughout Job
Bump Plug	11/03/2012 10:57		3	121			2510.0	Bump Plug 1000 PSI Over Final Lift (as Per Comp. Rep. Request)
Check Floats	11/03/2012 11:00							Check Floats, Returned 1 bbl Back to Truck. Small Water Flow to Tanks, Decide to Re-Bump Plug
Bump Plug	11/03/2012 11:04						2640.0	Re-Bump Plug
Check Floats	11/03/2012 11:06							Check Floats, Returned 1 bbl Back to Truck, Floats Holding
End Job	11/03/2012 11:06							
Safety Meeting - Pre Rig-Down	11/03/2012 11:30							Wet and Dry Samples of Cement Left on Location
Safety Meeting - Departing Location	11/03/2012 12:00							

Apollo - Murdock 24-34 4 1/2" Production Casing



Global Event Log									
Intersection		TIP	TISR	Intersection		TIP	TISR	Intersection	
3	Test Lines	09:33:52	3399	0.000	4	Drop Bottom Plug	09:35:03	11.00	0.000
6	Pump Mud Flush	09:41:53	266.9	3.300	7	Pump Clay-Web Water Spacer	09:49:22	366.1	3.300
9	Bottom Plug Ruptures	10:04:26	766.3	7.960	10	Pump Tail Cement	10:15:03	187.1	7.100
12	Drop Top Plug	10:37:38	0.000	0.000	13	Pump Displacement	10:39:43	114.0	8.000
15	Bump Plug	10:57:36	2510	0.000	16	Check Floats	11:00:58	35.17	0.000
18	Check Floats, Floats Holding	11:06:41	43.79	0.000	19	End Job	11:06:58	9.583	0.000