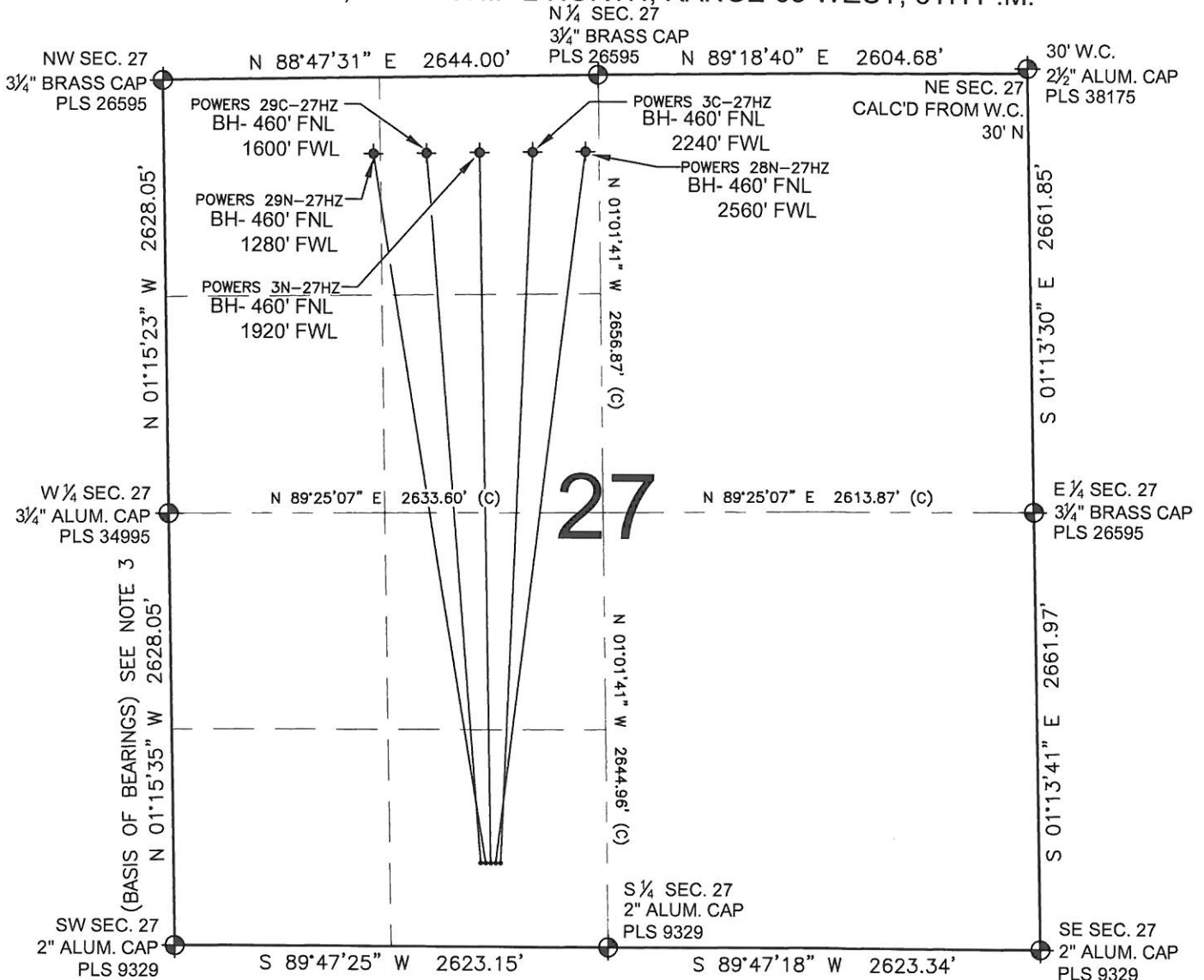


MULTI-WELL PLAN

POWERS 3N-27HZ

SECTION 27, TOWNSHIP 2 NORTH, RANGE 65 WEST, 6TH P.M.



LEGEND

- ⊕ = EXISTING MONUMENT
- ⬮ = BOTTOM HOLE
- = PROPOSED WELL
- ◆ = EXISTING WELL
- BH= BOTTOM HOLE

NOTES:

POWERS 29C-27HZ TO BE AT 510' FSL, 1860' FWL.
 BOTTOM HOLE AT 460' FNL & 1600' FWL.
 POWERS 29N-27HZ TO BE AT 510' FSL, 1890' FWL.
 BOTTOM HOLE AT 460' FNL & 1280' FWL.
 POWERS 3N-27HZ TO BE AT 510' FSL, 1920' FWL.
 BOTTOM HOLE AT 460' FNL & 1920' FWL.
 POWERS 28N-27HZ TO BE AT 510' FSL, 1950' FWL.
 BOTTOM HOLE AT 460' FNL & 2560' FWL.
 POWERS 3C-27HZ TO BE AT 510' FSL, 1980' FWL.
 BOTTOM HOLE AT 460' FNL & 2240' FWL.

NOTES:

1. THIS FIELD SURVEY CONFORMS TO THE MINIMUM STANDARDS SET BY THE C.O.G.C.C., RULE NO. 215
2. HORIZONTAL POSITIONS AND ORTHOMETRIC ELEVATIONS SHOWN AT THE WELL HEAD, ARE BASED ON GPS-RTK POSITIONS DERIVED FROM MINIMUM 2-HOUR STATIC OBSERVATIONS CORRECTED BY THE NATIONAL GEODETIC SURVEY ONLINE POSITIONING USER SERVICE, O.P.U.S. DATUM: HORIZONTAL = NAD83/2007, VERTICAL = NAVD88
3. THE BASIS OF BEARINGS ARE STATE PLANE COORDINATE SYSTEM GRID BEARINGS SHOWN HEREON BETWEEN THE DESCRIBED MONUMENTS SHOWN HEREON.
4. GRID DISTANCES ARE SHOWN, AS MEASURED IN THE FIELD, WITH TIES TO WELLS MEASURED PERPENDICULAR TO SECTION LINES.

PREPARED BY:



KERR-MCGEE OIL & GAS ONSHORE LP

FIELD DATE: 07-03-12	PAD NAME: POWERS 5 PAD
DRAWING DATE: 07-10-12	SURFACE LOCATION:
BY: KAG	REV: SMF
WELD COUNTY, COLORADO SE 1/4 SW 1/4, SEC. 27, T2N, R65W, 6TH P.M.	

