

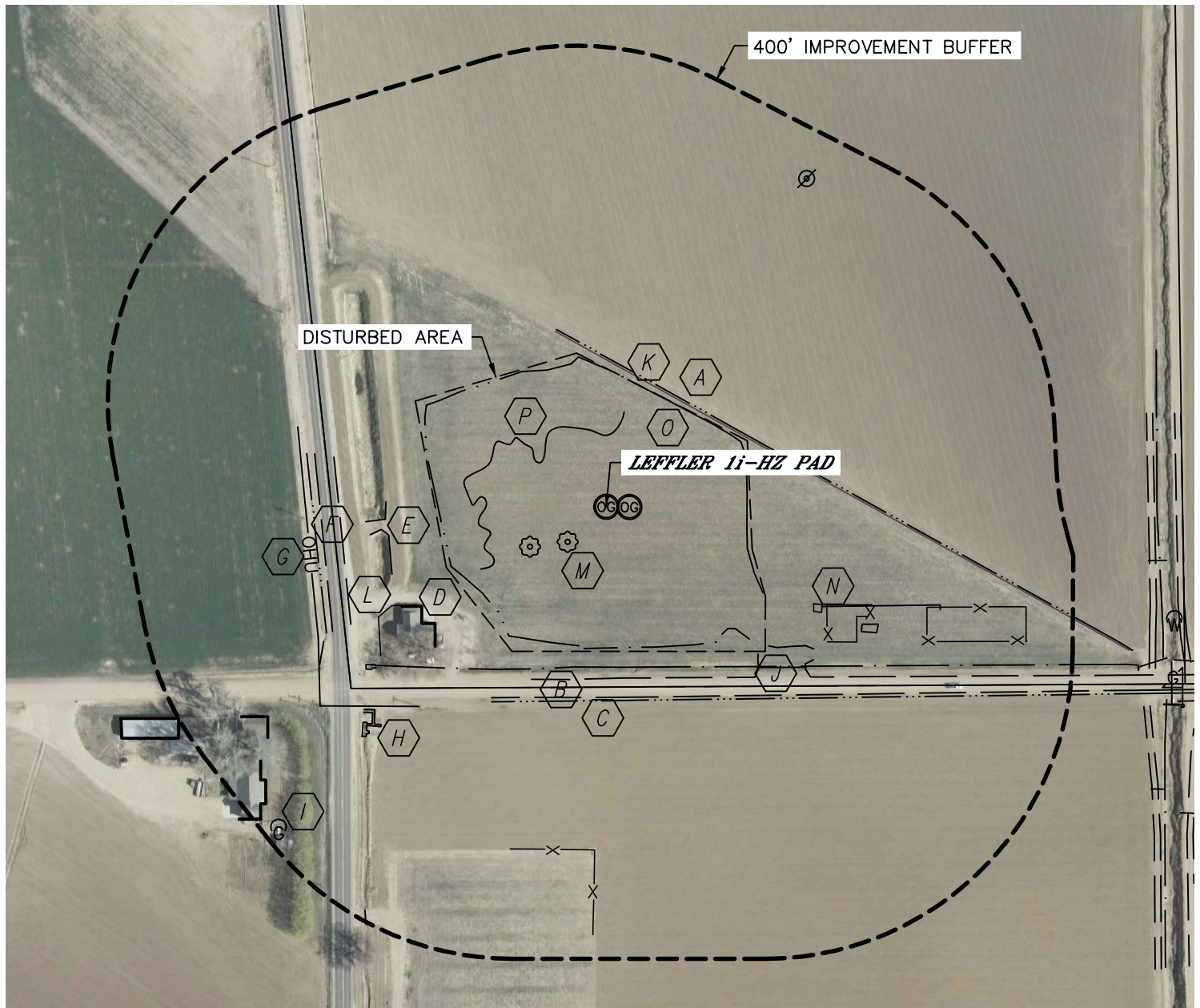


Lat40°, Inc. 1635 Foxtrail Drive, Suite 325 Loveland, CO 970-776-3321

## LOCATION DRAWING

LEFFLER 1i-HZ PAD

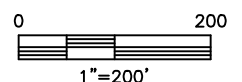
SECTION: 1  
TOWNSHIP: 6N  
RANGE: 66W



### IMPROVEMENTS: (MEASURED FROM THE LEFFLER 1I-204 LOCATION)

<b>A</b>	DITCH 170' NE, 209' S	<b>G</b>	OVERHEAD UTILITY 390' W	<b>M</b>	EX. O&G WELL 68' & 112' SW ABANDONED LOCATION 500' NE
<b>B</b>	COUNTY ROAD 72 225' S	<b>H</b>	IRRIGATION STRUCTURE 364' & 400' SW	<b>N</b>	PRODUCTION EQUIPMENT (PDC) 298' SE
<b>C</b>	BARROW DITCH 252' S, 380' W	<b>I</b>	LP TANK 596' SW	<b>O</b>	EDGE EX. DRILL PAD 160' NE, 214' W, 184' S, 183' E
<b>D</b>	DWELLIING 269' & 518' SW OUT-BUILDING 558' & 621' SW	<b>J</b>	CULVERT 287' SE	<b>P</b>	WET AREA 93' N, 156' W
<b>E</b>	POND 285' & 287' W	<b>K</b>	FIELD LINE 168' NE		
<b>F</b>	COUNTY ROAD 35 346' W	<b>L</b>	FENCE 294' SW, 446' S		

NEAREST: BUILDING 269' SW (DWELLING), PUBLIC ROAD 225' S (CR 72),  
ABOVE GROUND UTILITY 390' W, RAILROAD 5280'+, PROPERTY LINE 234' S



DATE: 7/23/2012  
PROJECT#: 2011150