



NABORS

**COMPLETION
& PRODUCTION
SERVICES CO.**

SONIC LOG

Company		MULL DRILLING COMPANY, INC.	
Well	SAT UNIT #1-14		
Field	WILDCAT		
County	KIOWA	State	COLORADO
Location:	AP1 # : 05-061-06877		Other Services CDL/CNL/PE DIL/MEL
Permanent Datum		GROUND LEVEL	Elevation 4101
Log Measured From		KELLY BUSHING 11' A.G.L.	
Drilling Measured From		KELLY BUSHING	
SEC 14 TWP 17S RGE 45W			
Date	10/13/12		
Run Number	TWO		
Depth Driller	5300		
Depth Logger	5302		
Bottom Logged Interval	5290		
Top Log Interval	300		
Casing Driller	8 5/8" @ 352'		
Casing Logger	350		
Bit Size	7 7/8"		
Type Fluid in Hole	CHEMICAL MUD	CHLORIDES 3,000 PPM	
Density / Viscosity	9.2/60		
pH / Fluid Loss	9.5/9.6		
Source of Sample	FLOWLINE		
Rm @ Meas. Temp	.900 @ 80F		
Rmt @ Meas. Temp	.675 @ 80F		
Rmc @ Meas. Temp	1.08 @ 80F		
Source of Rmt / Rmc	MEASUREMENT		
Rm @ BHT	.563 @ 128F		
Time Circulation Stopped	5.5 HOURS		
Time Logger on Bottom	8:15 A.M.		
Maximum Recorded Temperature	128F		
Equipment Number	4010		
Location	HAYS, KANSAS		
Recorded By	JEFF LUEBBERS		
Witnessed By	PHIL ASKEY		

<<< Fold Here >>>

All interpretations are opinions based on inferences from electrical or other measurements and we cannot and do not guarantee the accuracy or correctness of any interpretation, and we shall not, except in the case of gross or willful negligence on our part, be liable or responsible for any loss, costs, damages, or expenses incurred or sustained by anyone resulting from any interpretation made by any of our officers, agents or employees. These interpretations are also subject to our general terms and conditions set out in our current Price Schedule.

Comments

THANK YOU FOR USING "NABORS" HAYS, KS. (785) 628-6395
DIRECTIONS
CHEYENNE WELLS, CO. 18S. ON HWY 385 TO "RD. Z", 6W. TO "RD. 59", 1/2S., E. INTO

Database File:

409693pe.db

Dataset Pathname:

pass6.6

Presentation Format:

slt

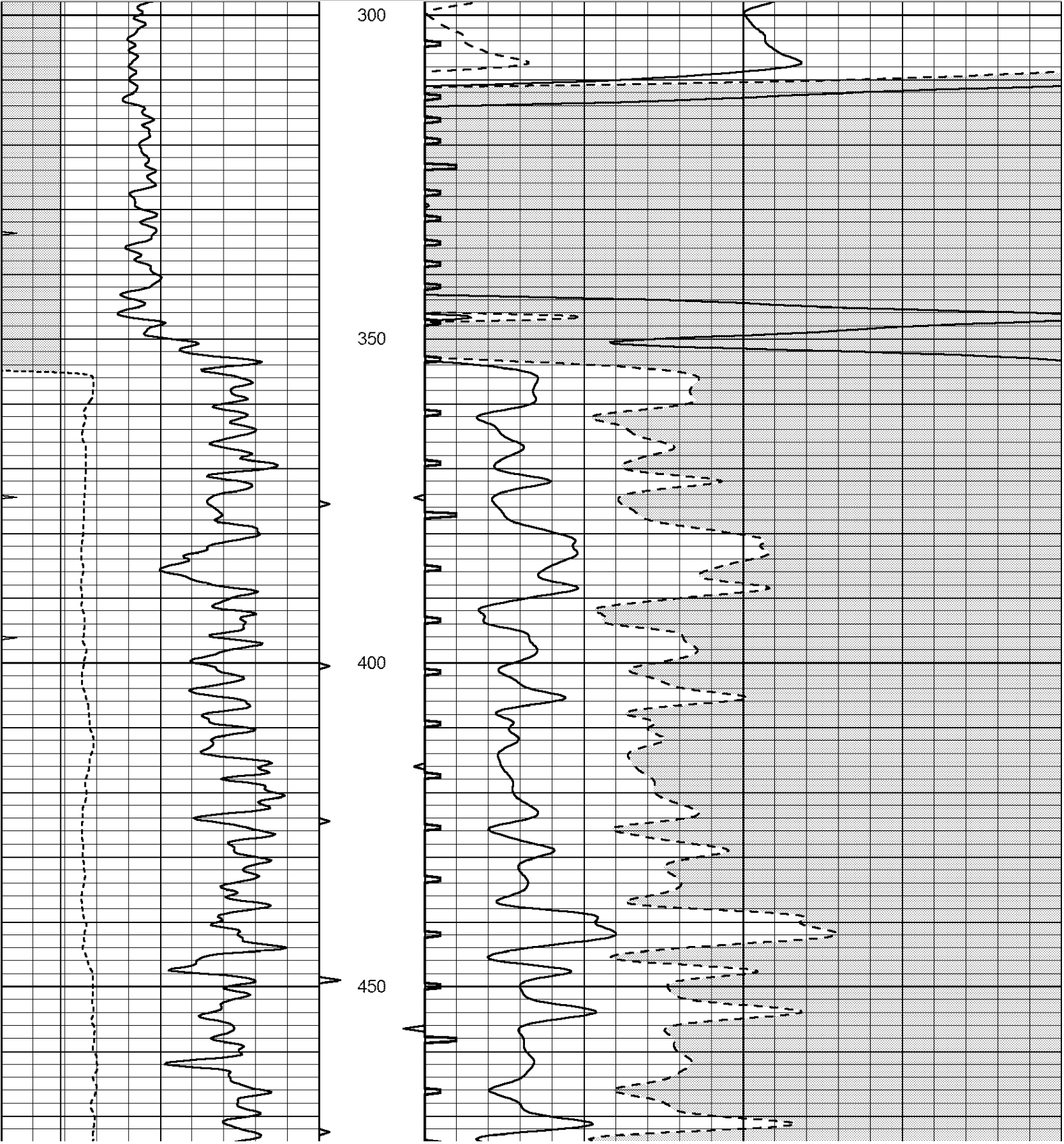
Dataset Creation:

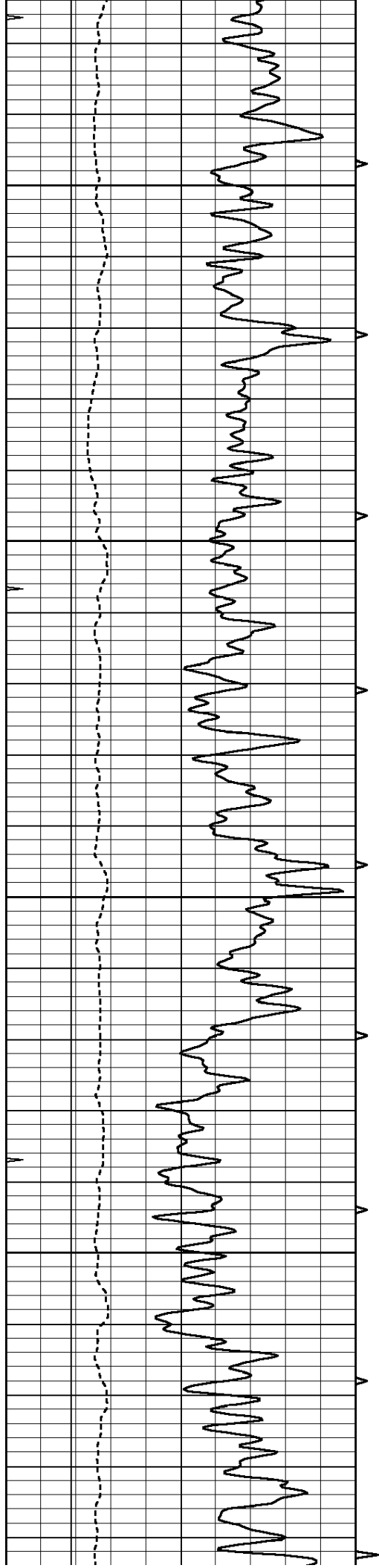
Sat Oct 13 12:53:15 2012

Charted by:

Depth in Feet scaled 1:240

0	GAMMA RAY (GAPI)	150	ABHV	140	DELTA TIME (usec/ft)	40
6	CALIPER (in)	16	10 (ft3) 0	30	SONIC POROSITY (pu)	-10
0	MINMK	20	TBHV	0	ITT (msec)	20
			0 (ft3) 10			



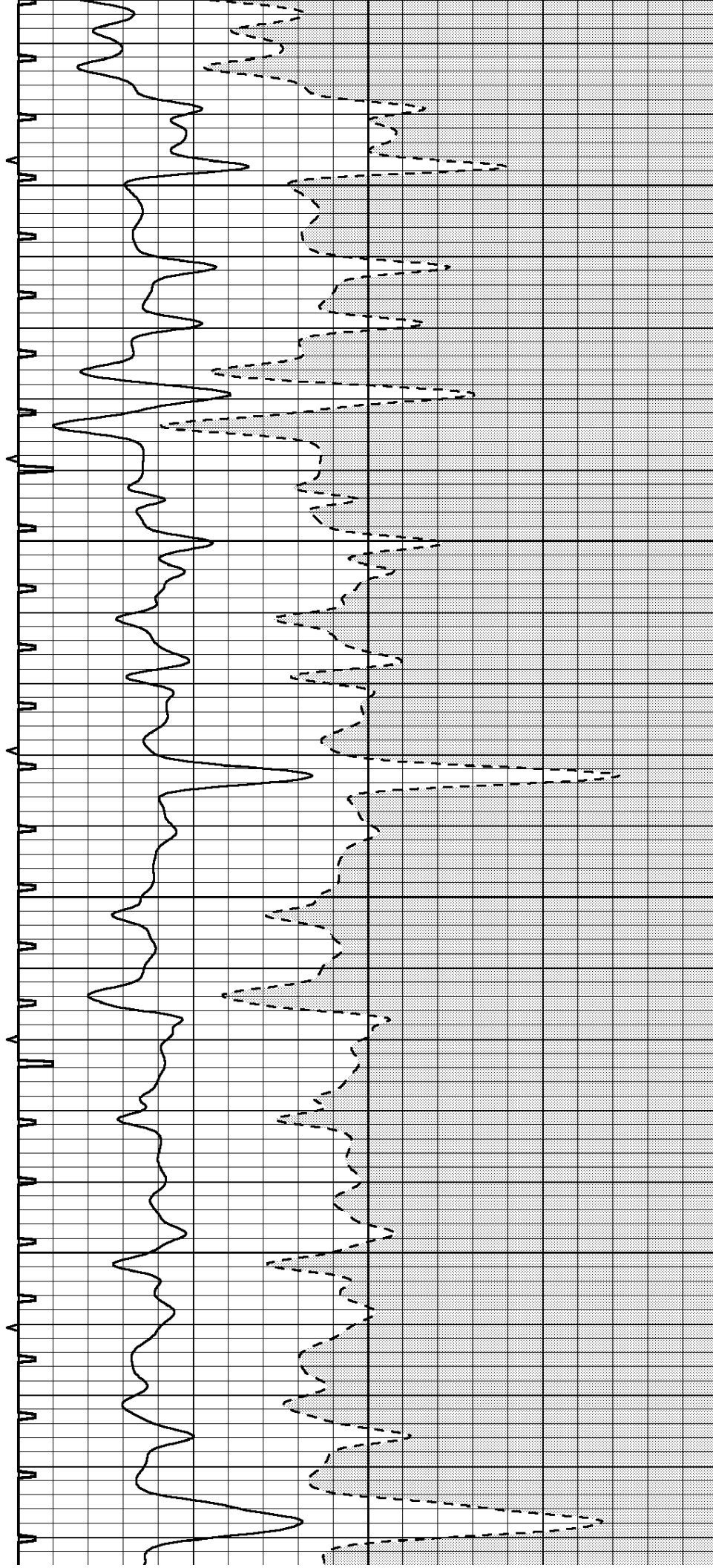


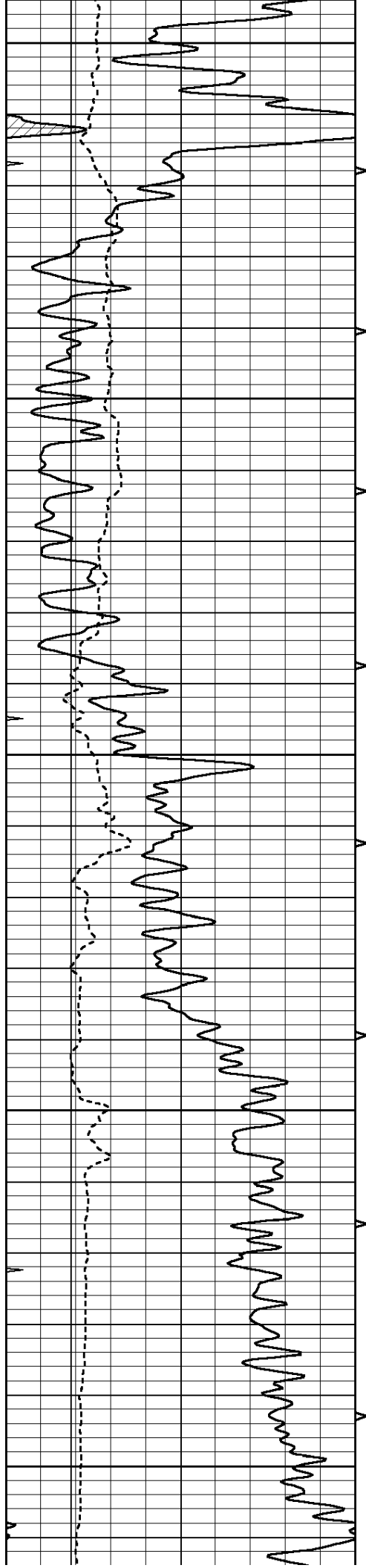
500

550

600

650





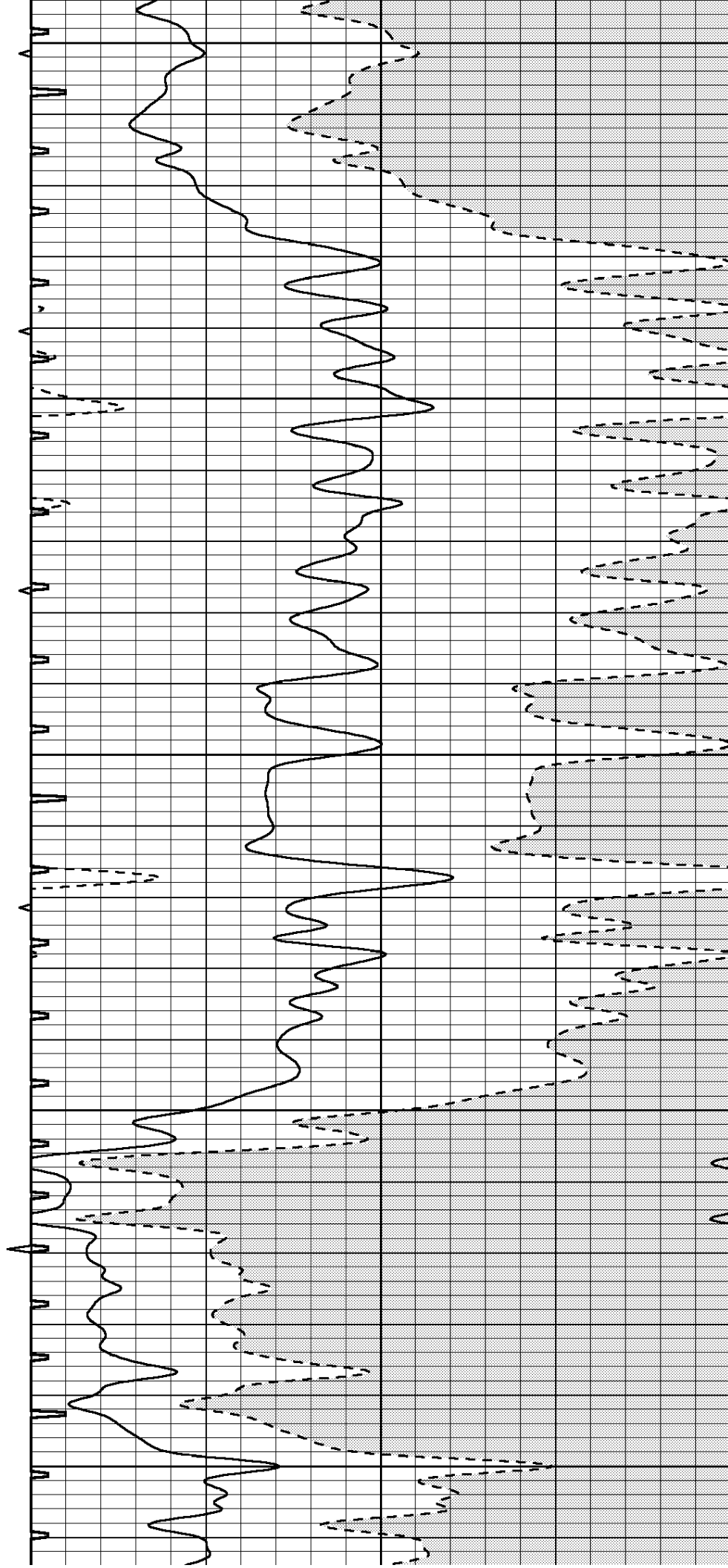
700

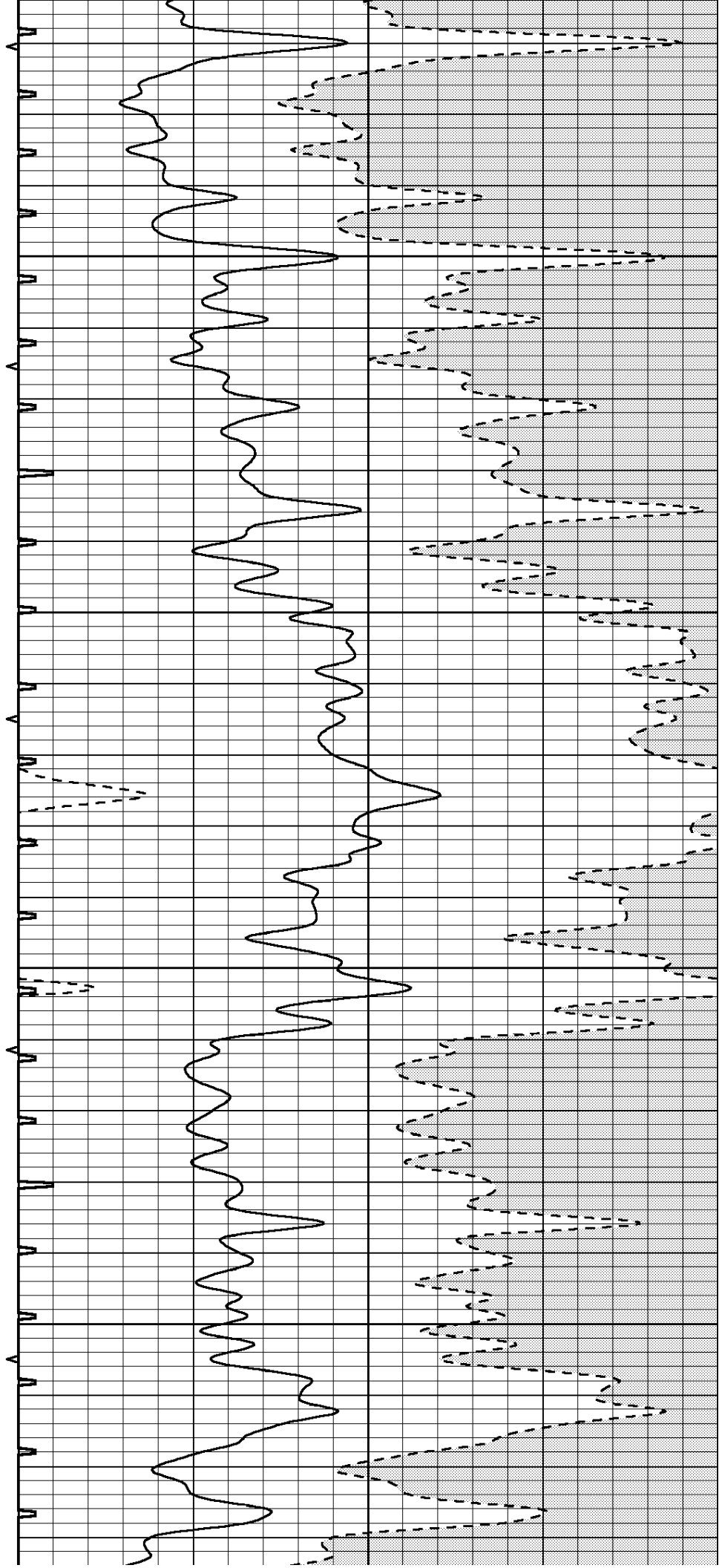
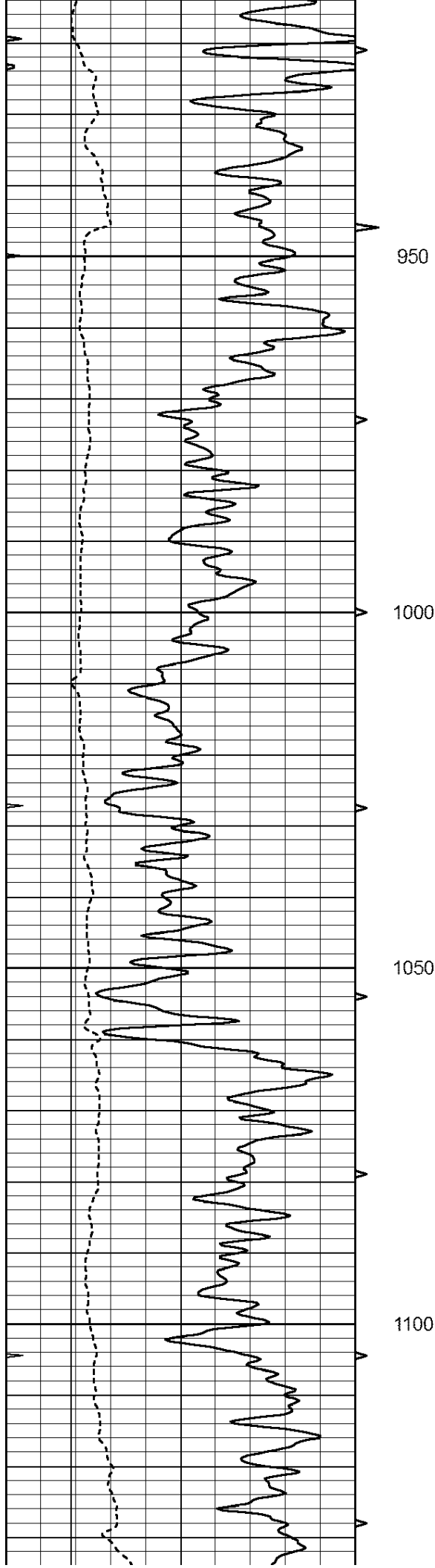
750

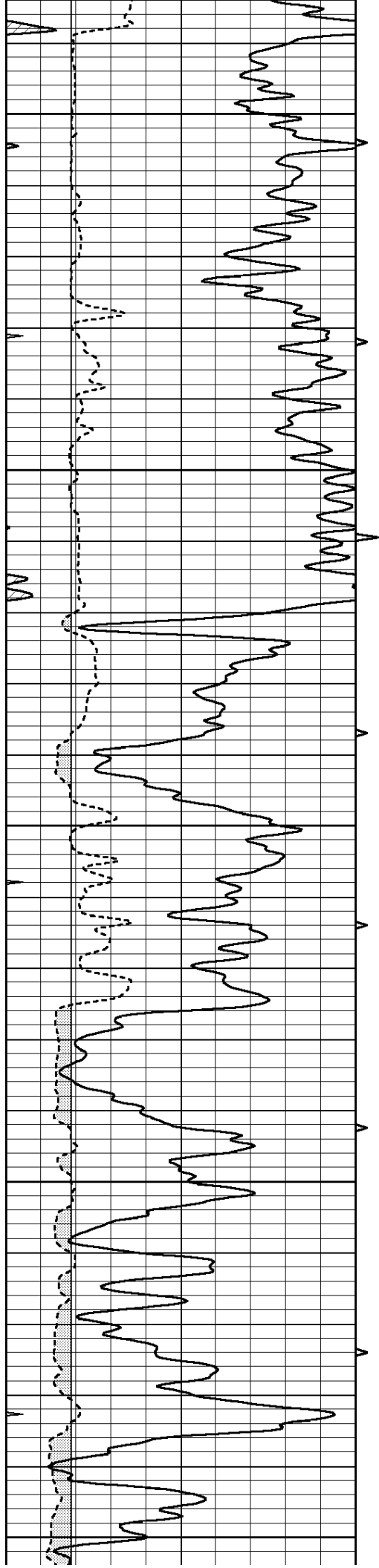
800

850

900







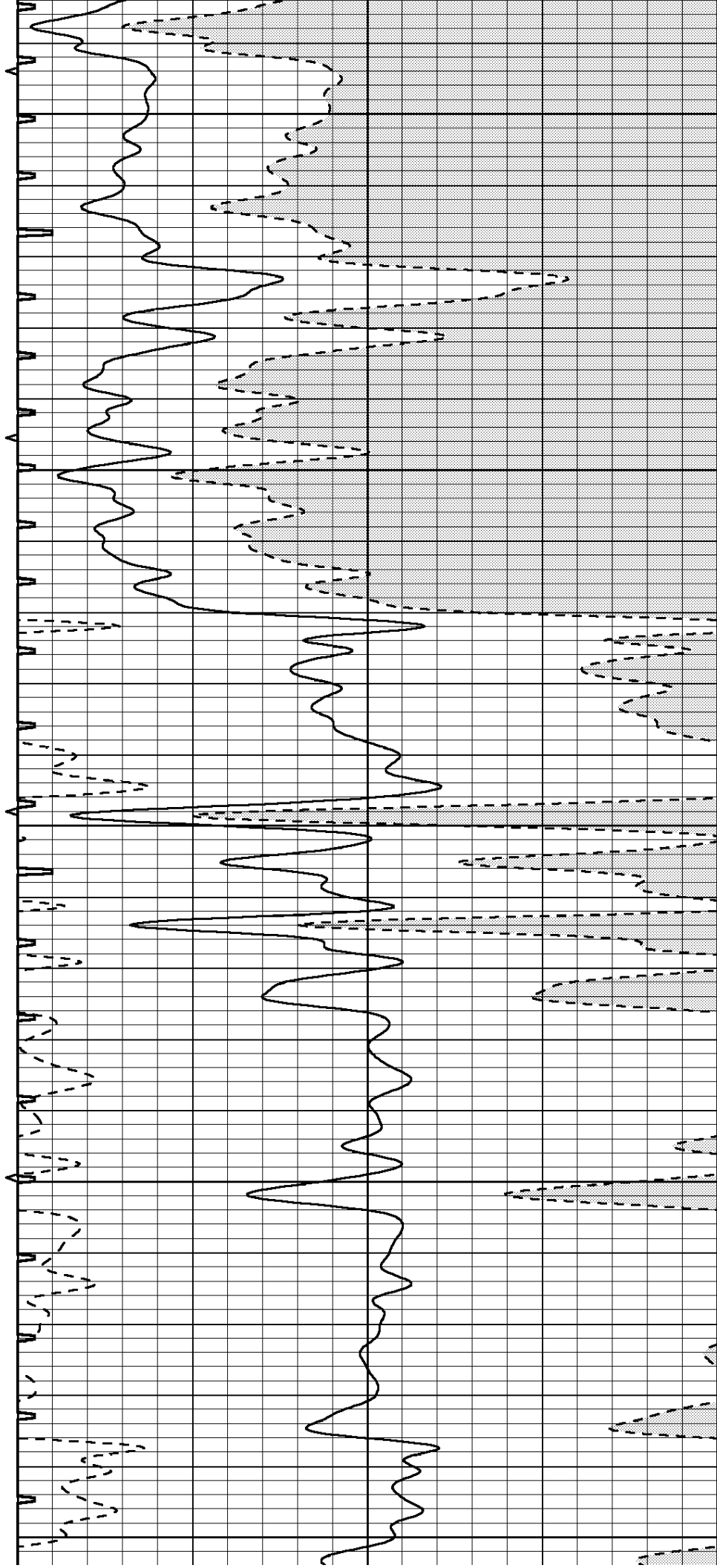
1150

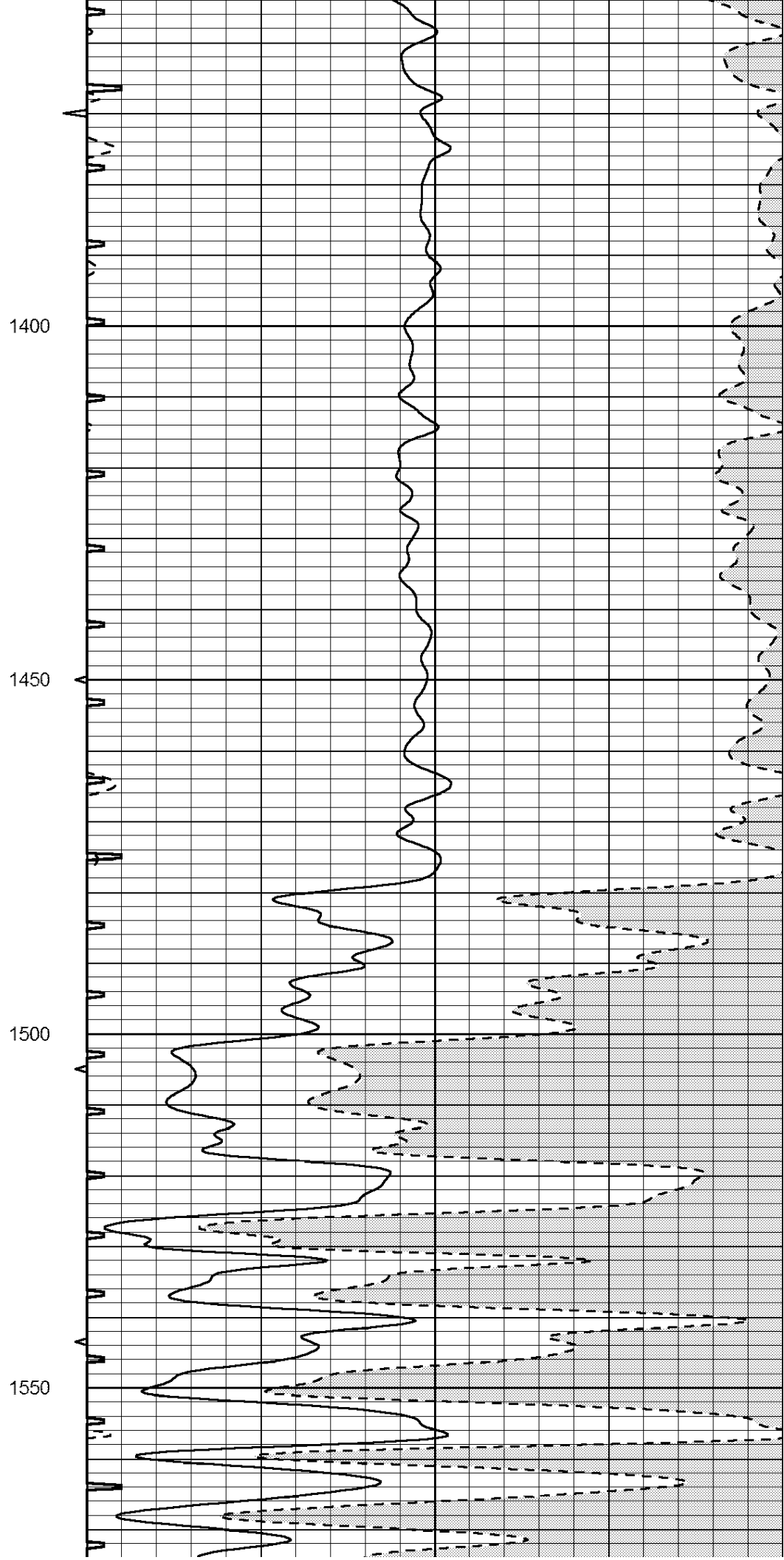
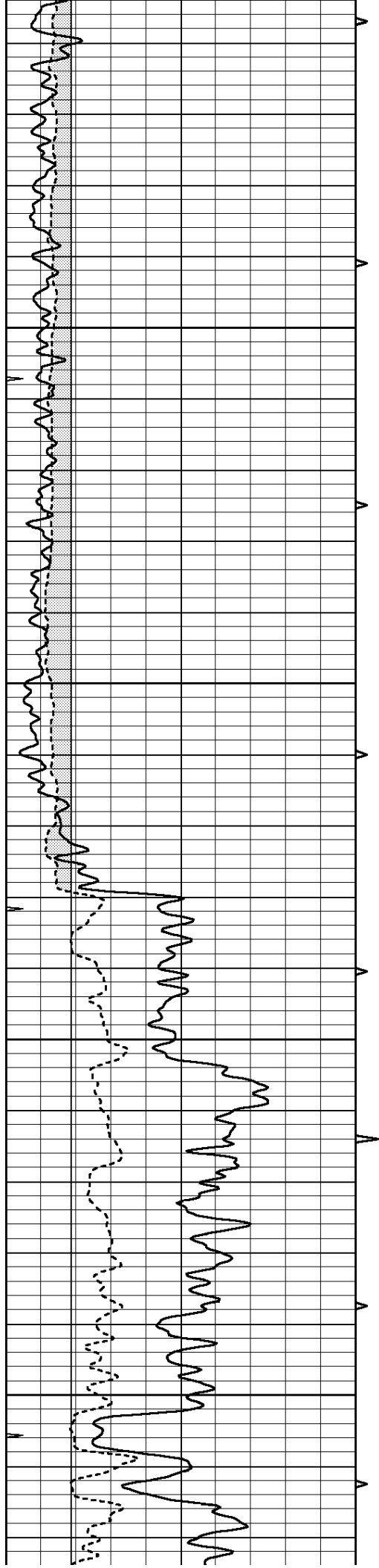
1200

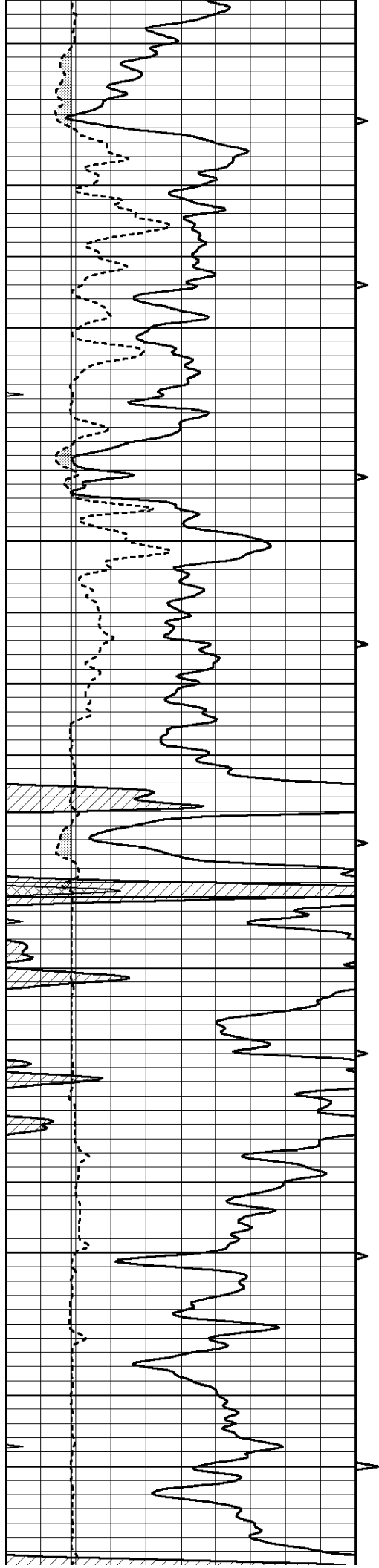
1250

1300

1350





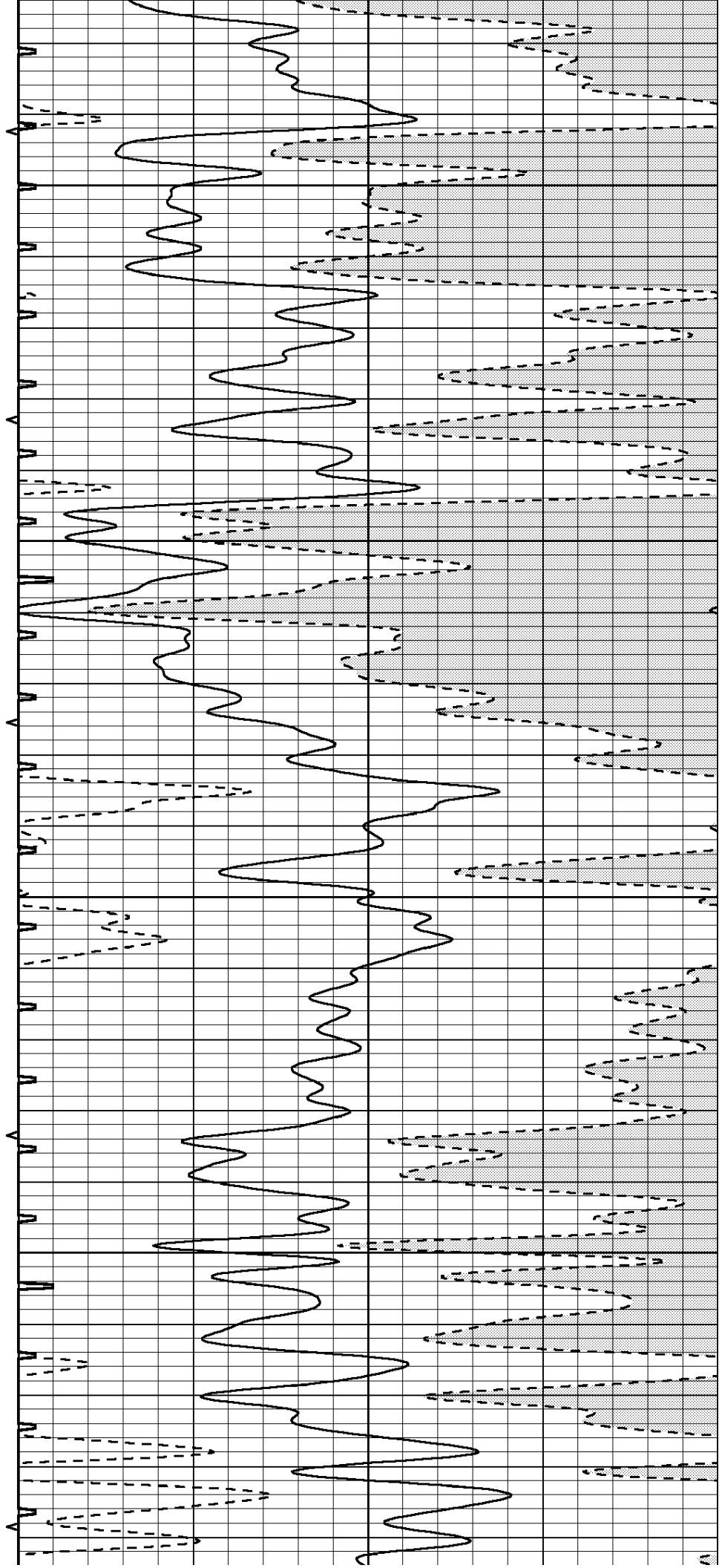


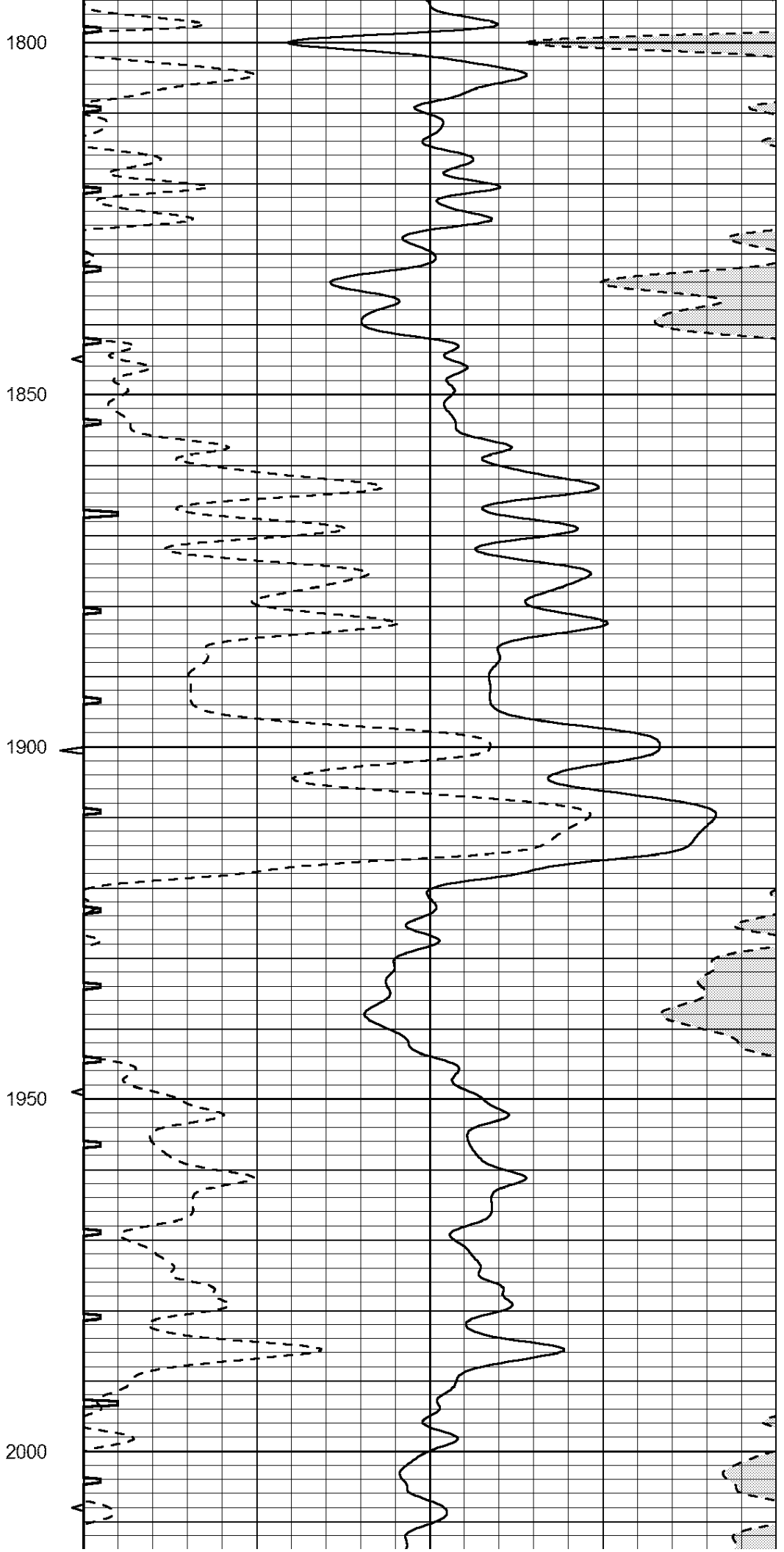
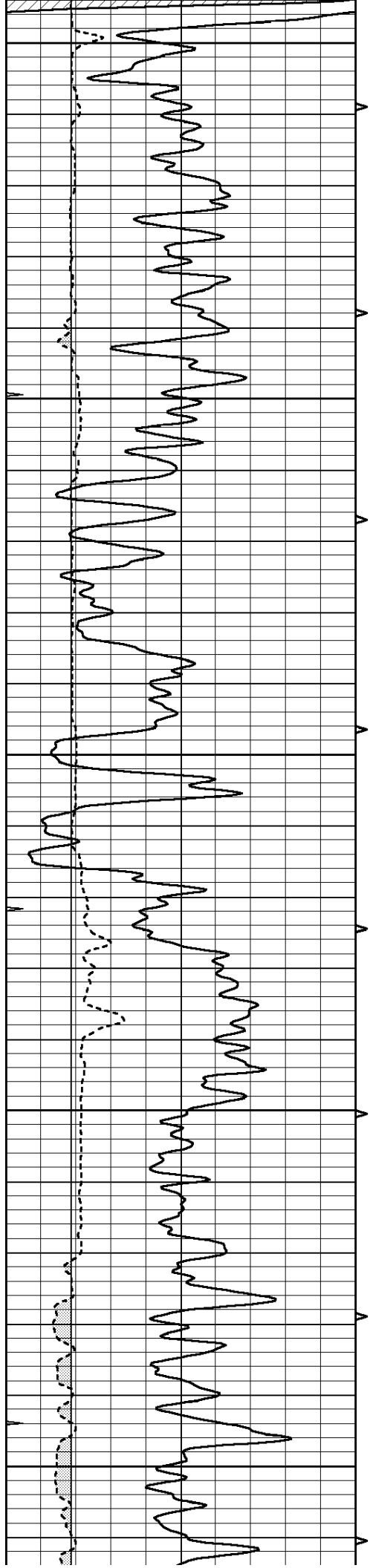
1600

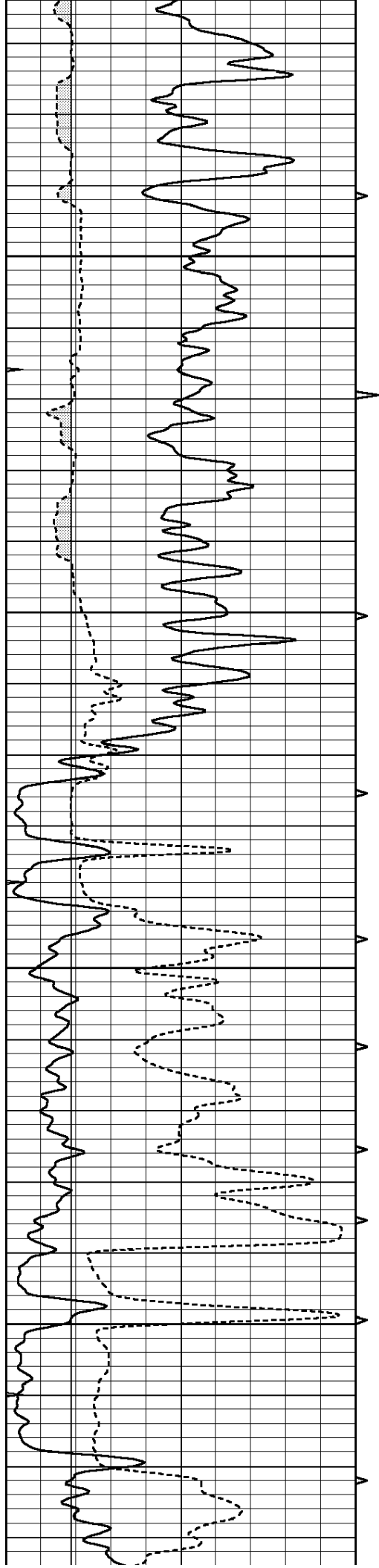
1650

1700

1750





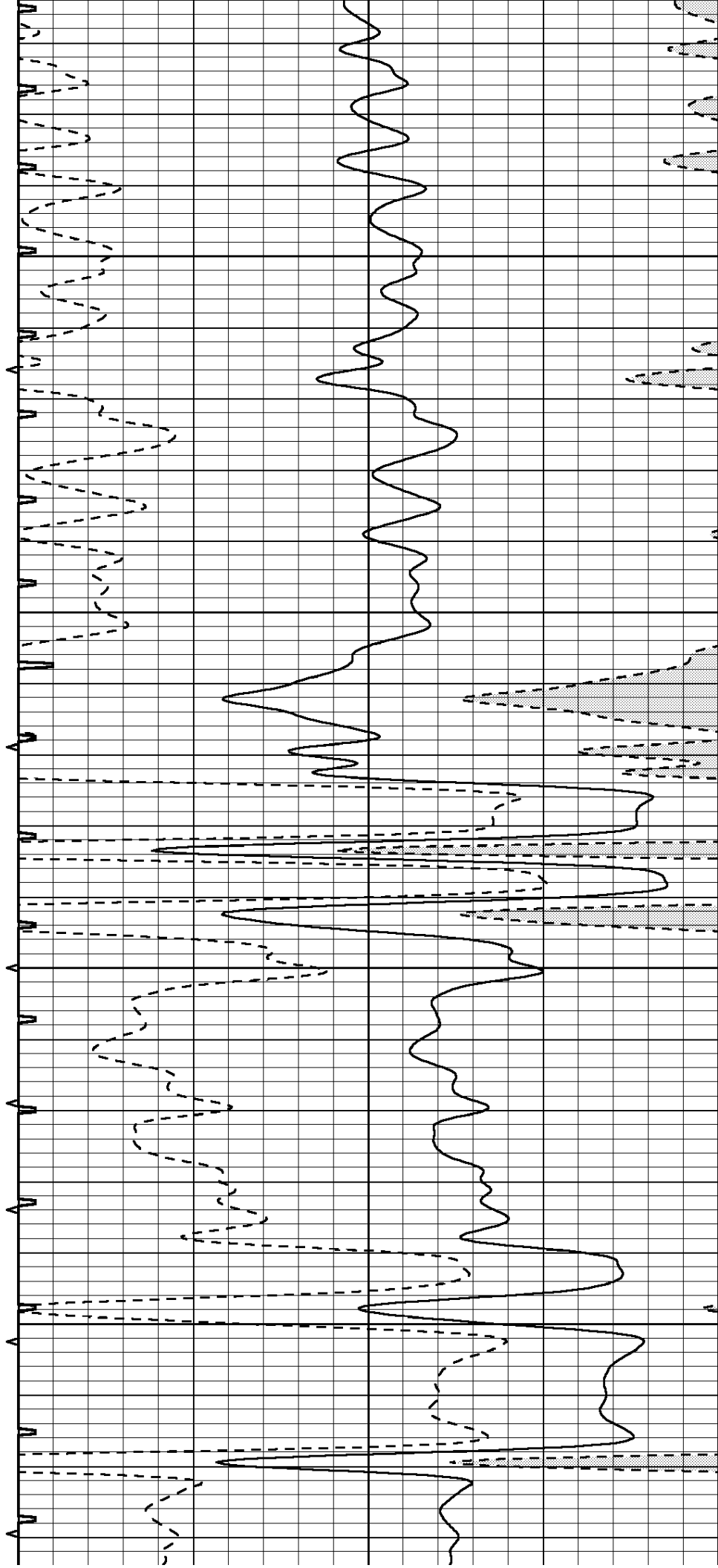


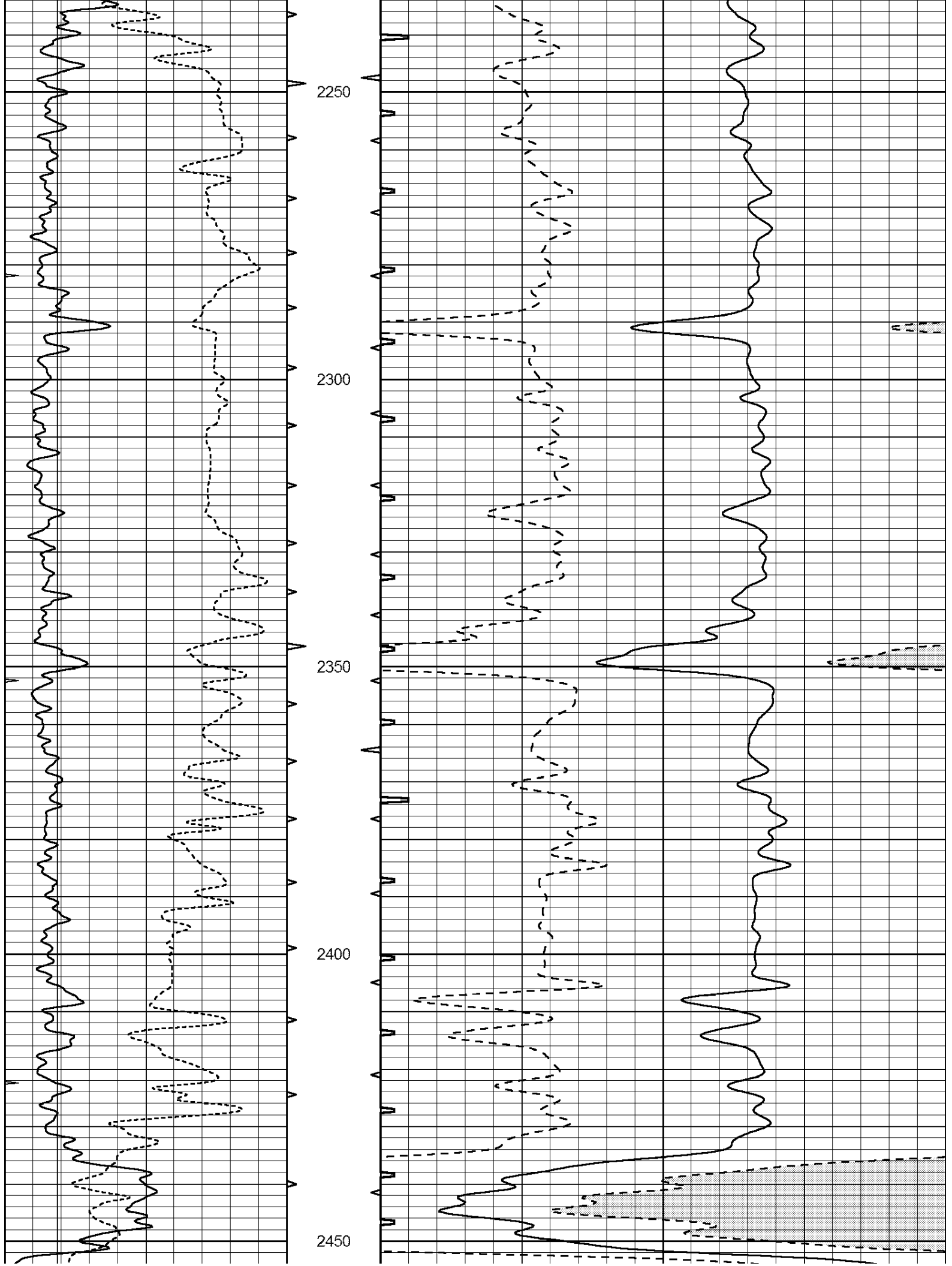
2050

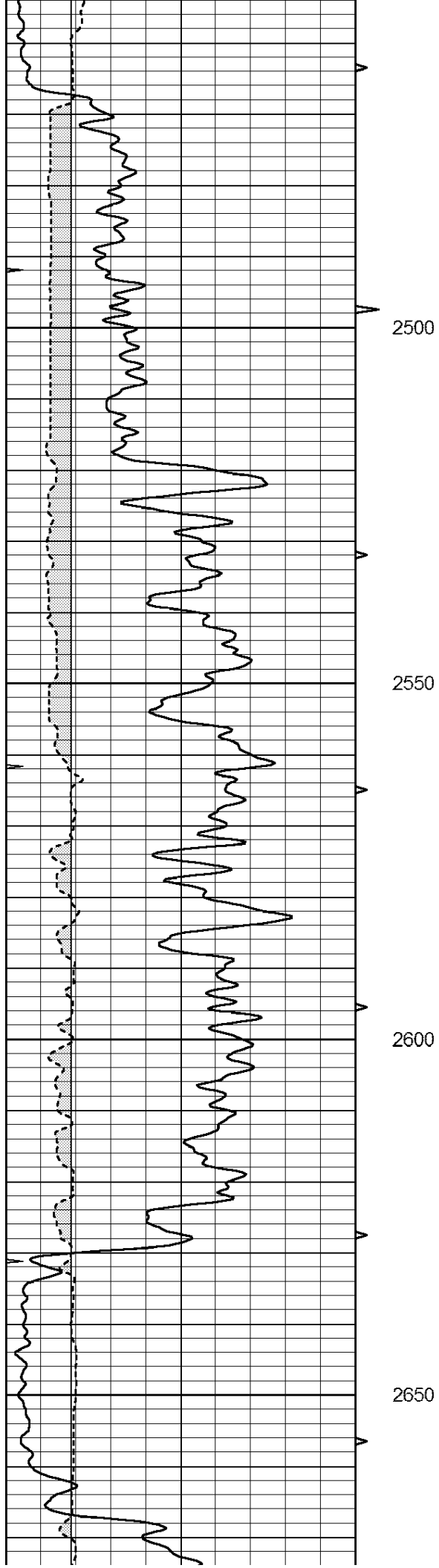
2100

2150

2200





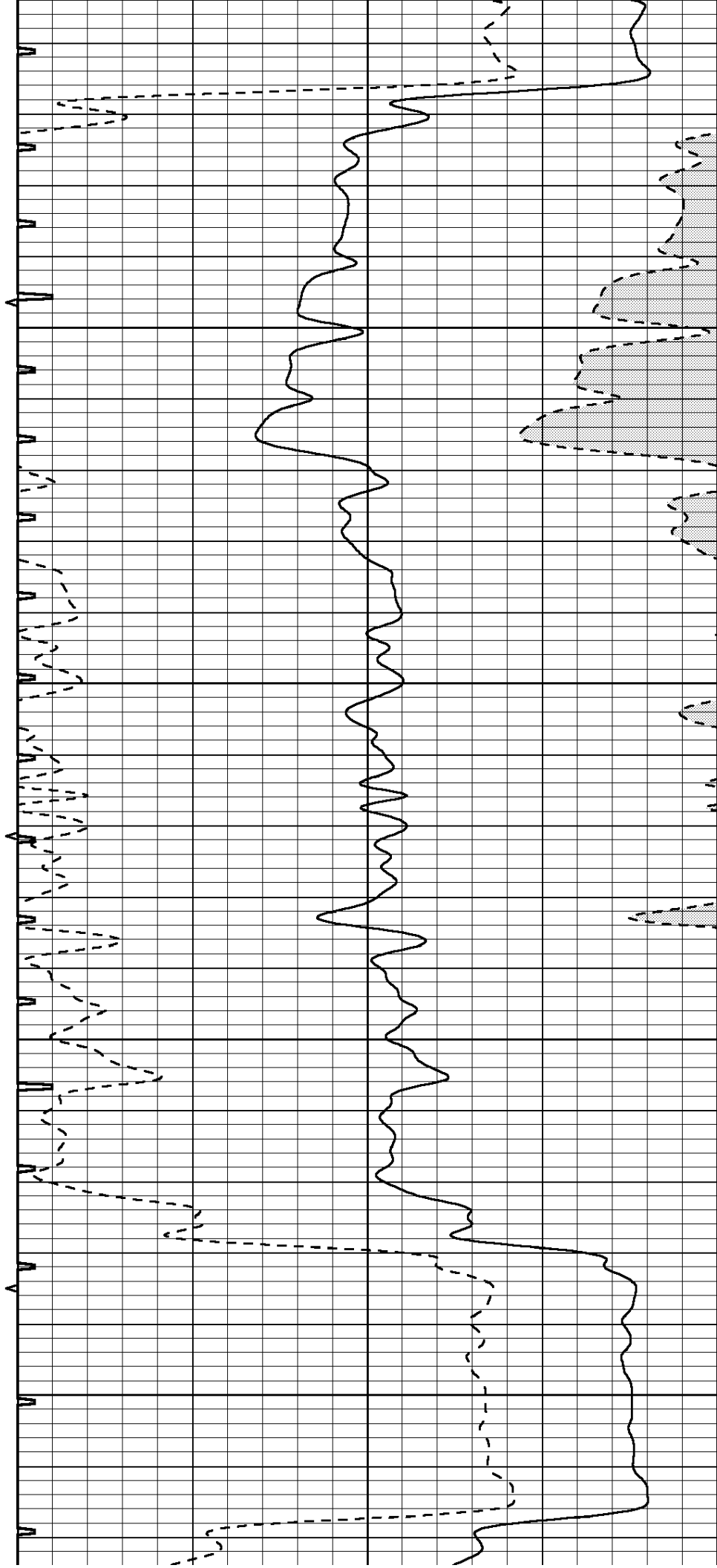


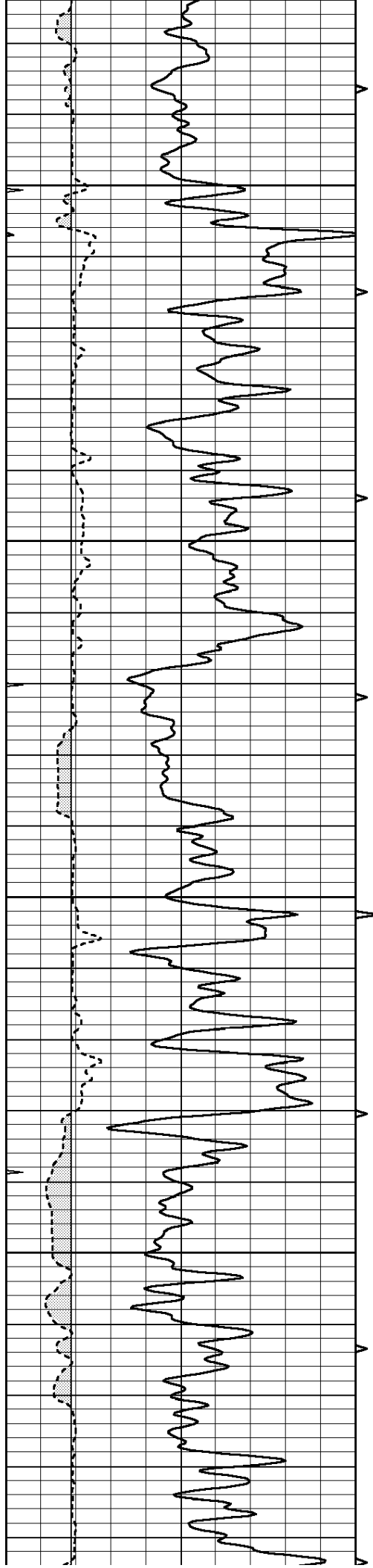
2500

2550

2600

2650



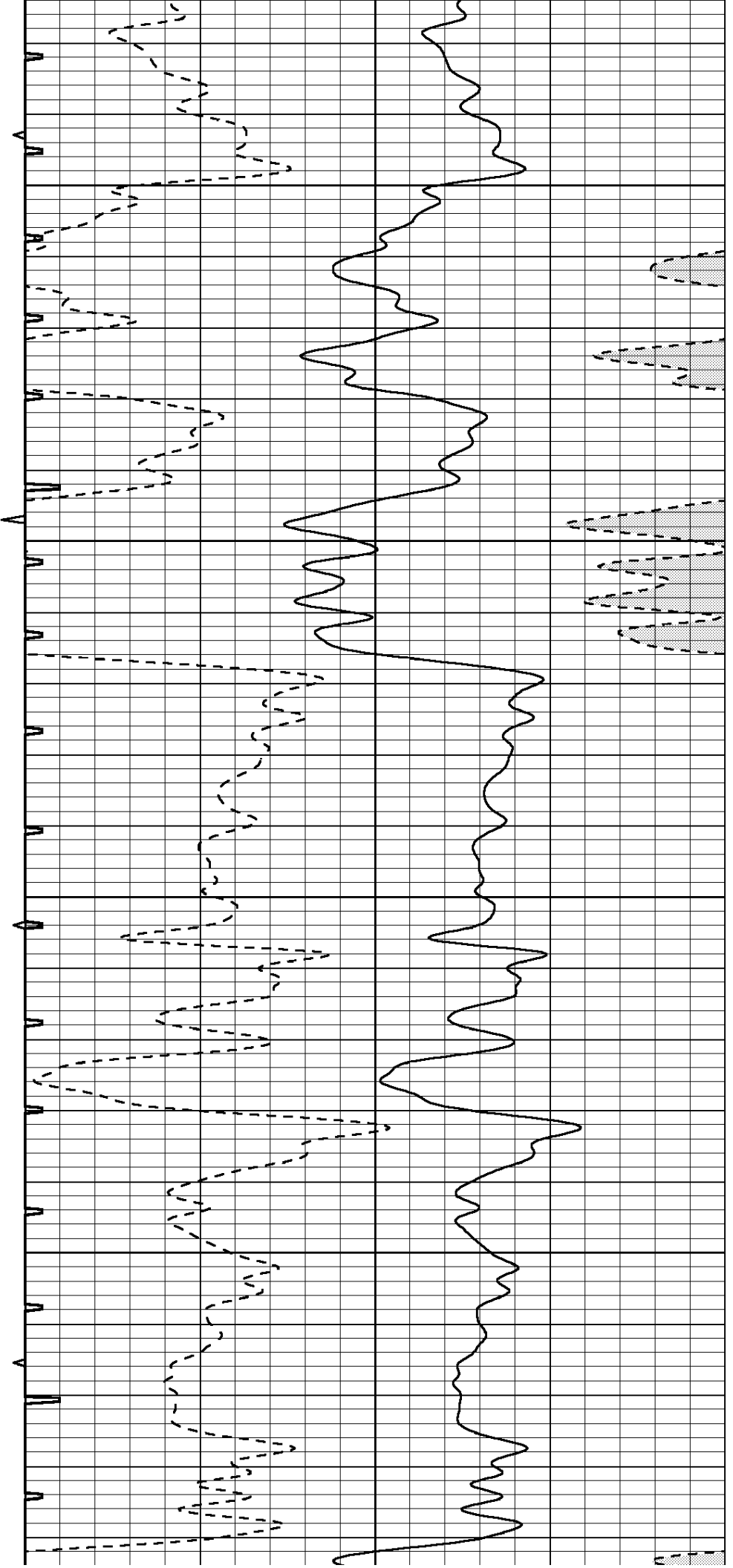


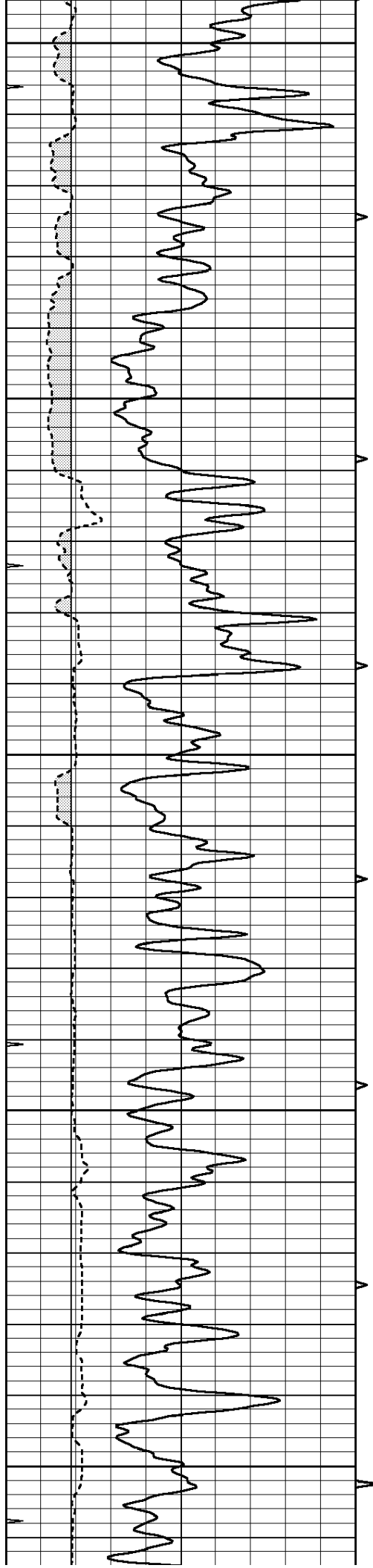
2700

2750

2800

2850





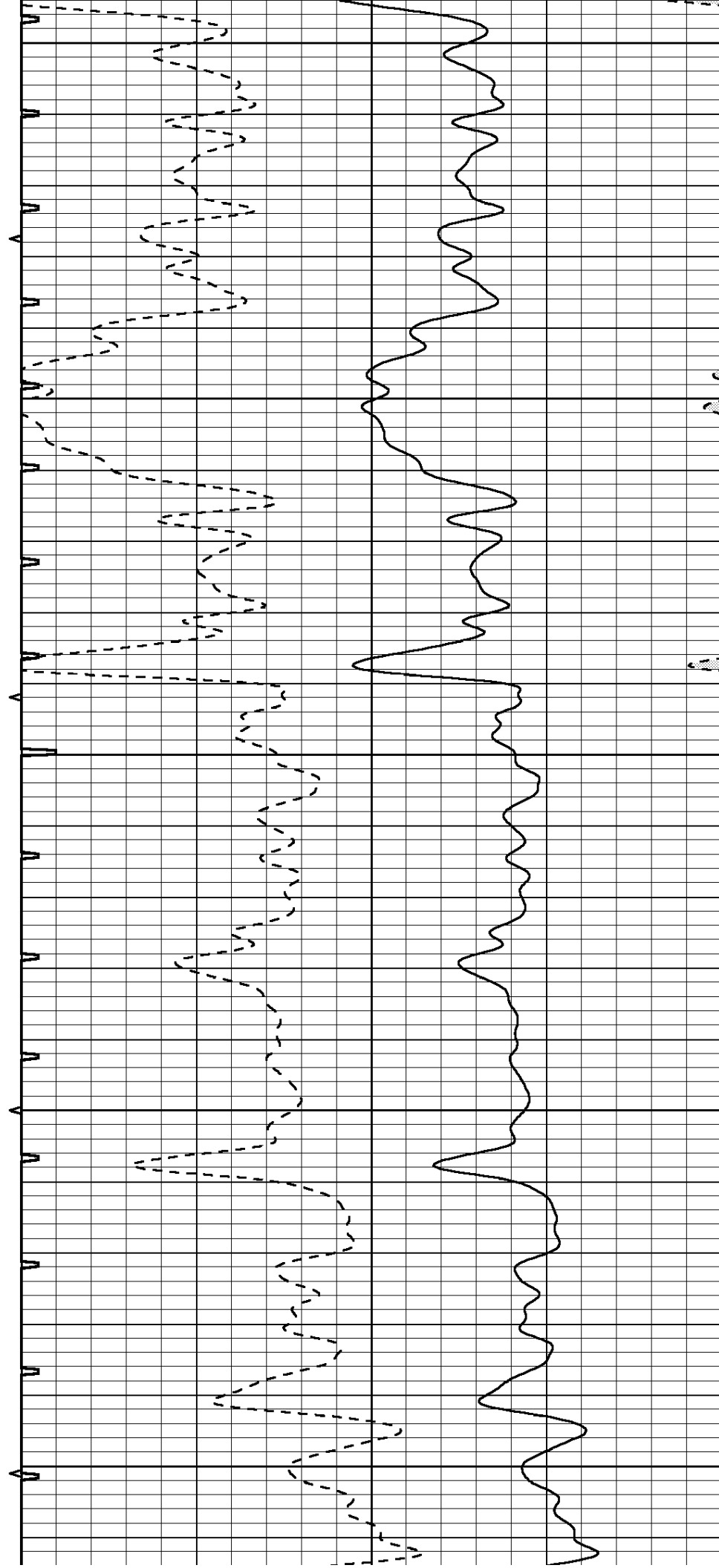
2900

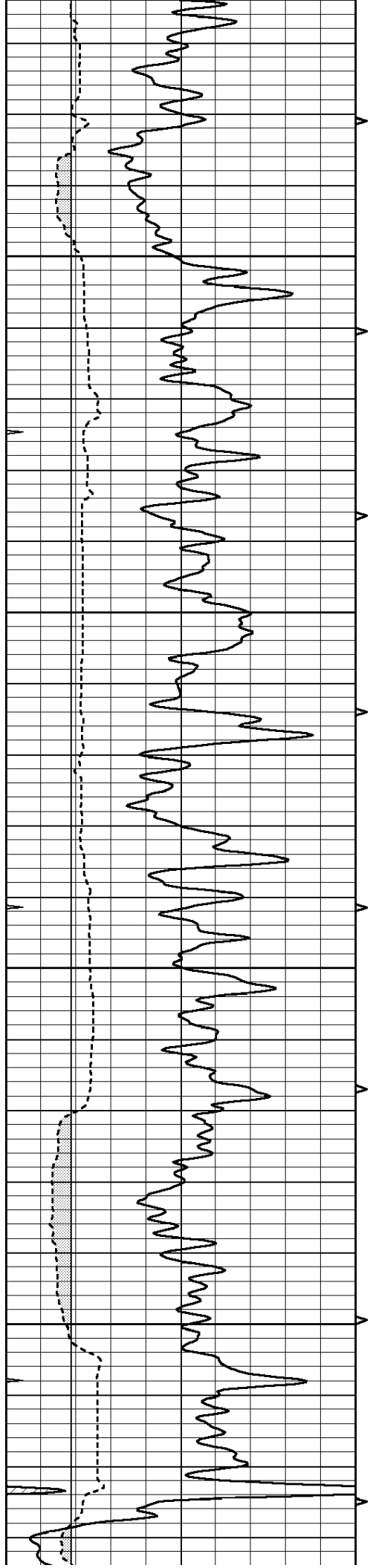
2950

3000

3050

3100



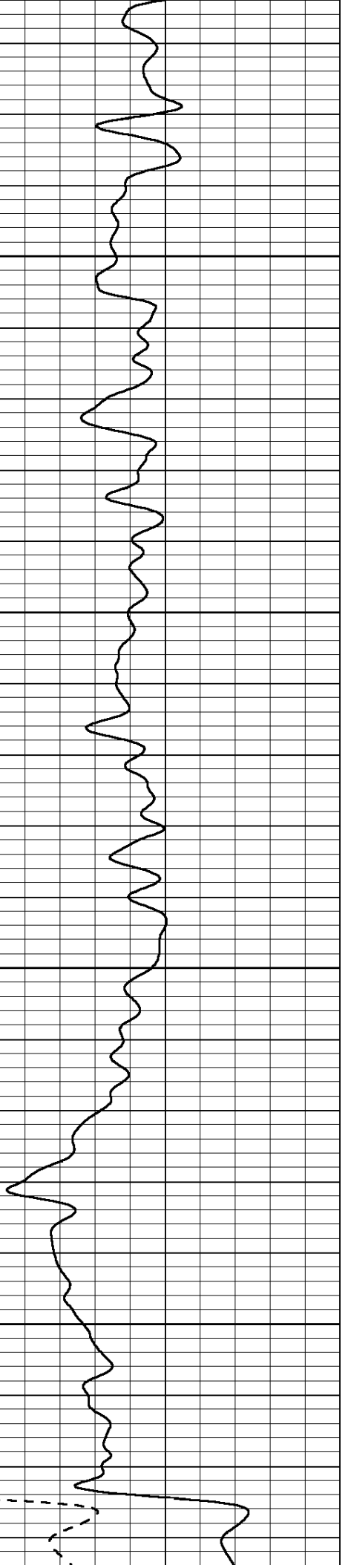
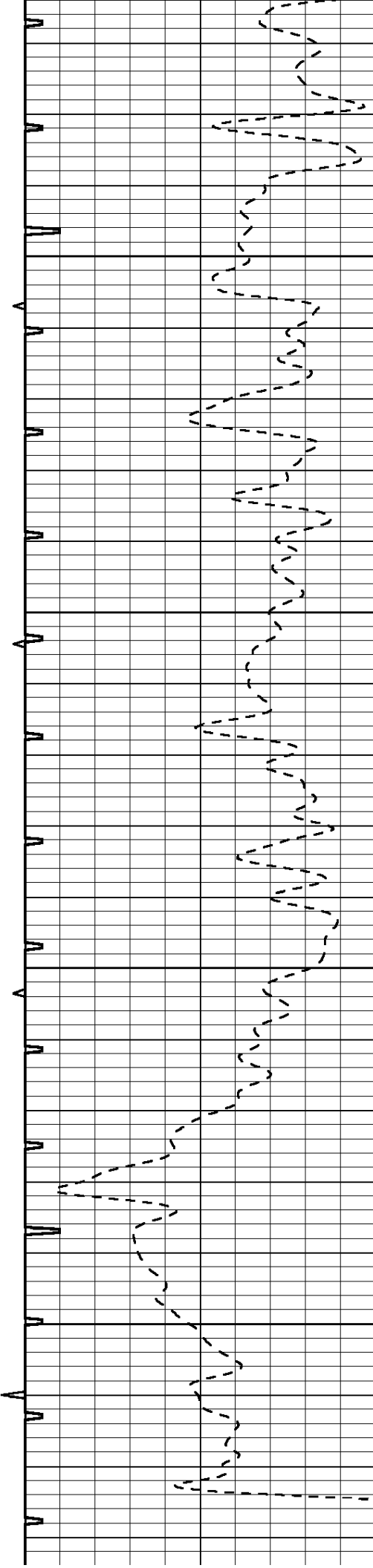


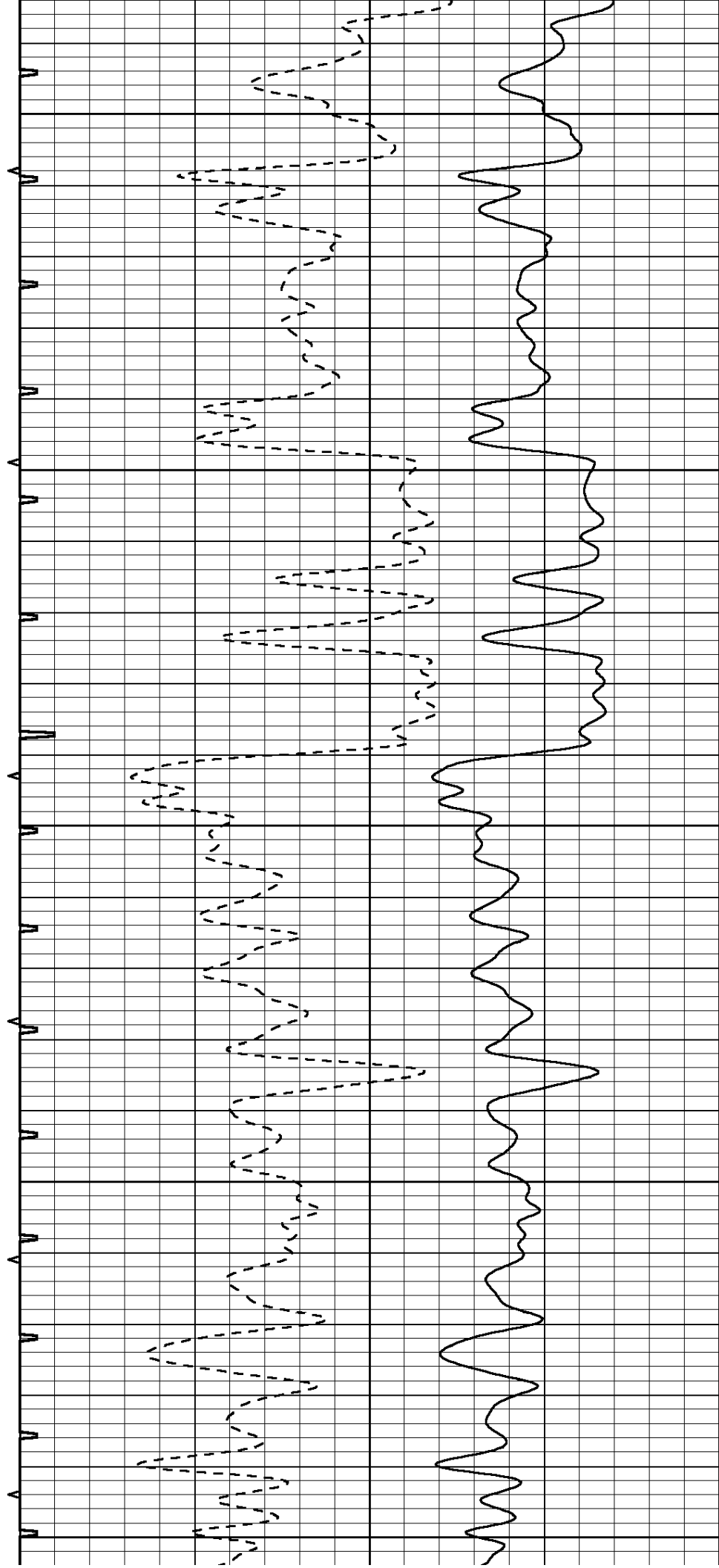
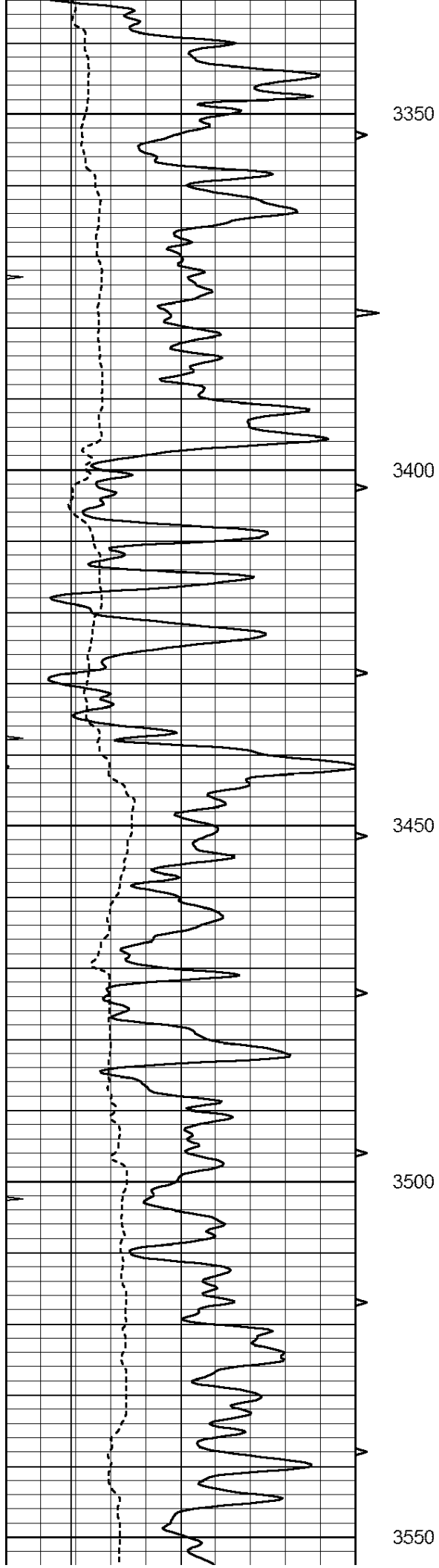
3150

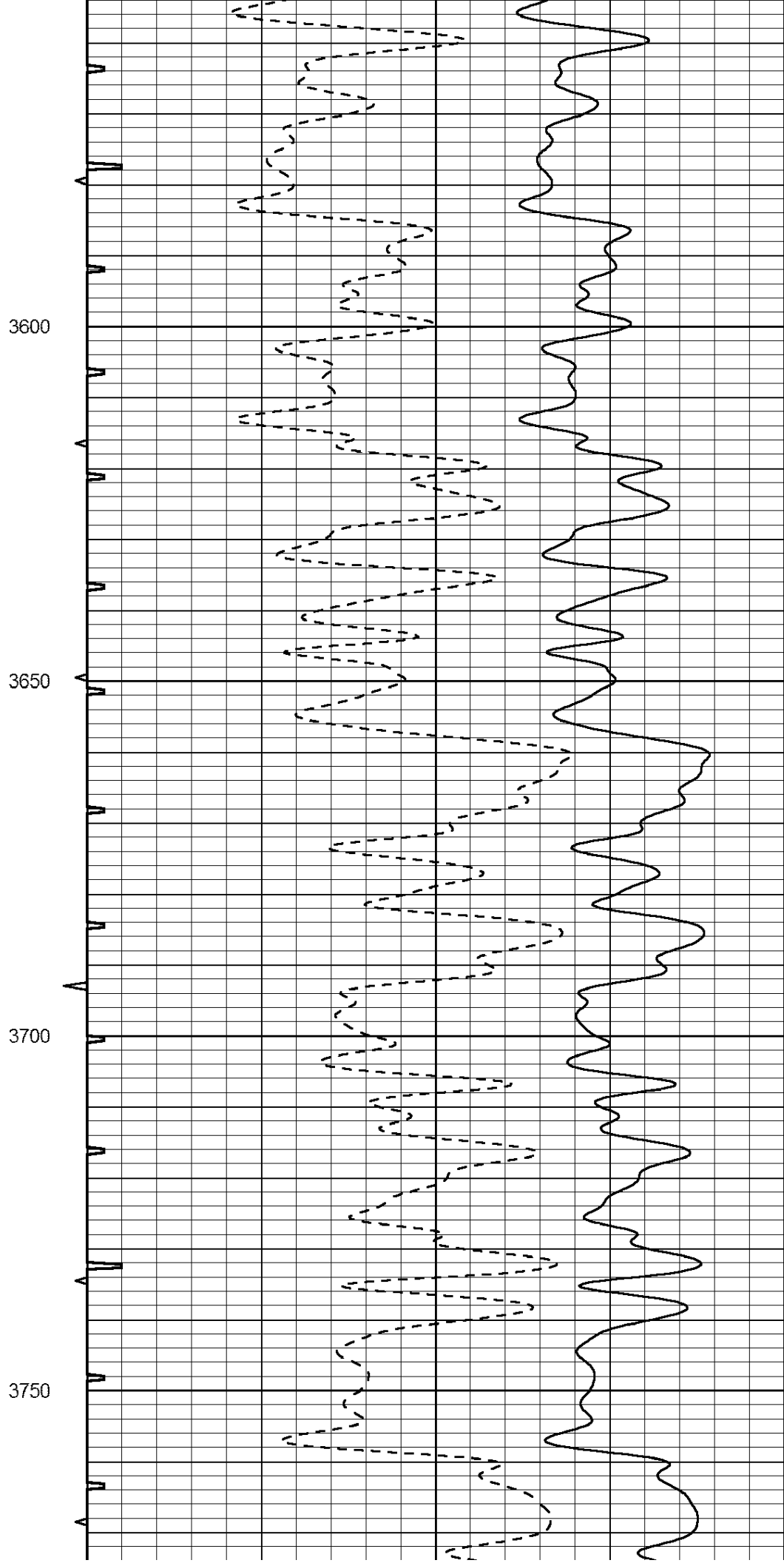
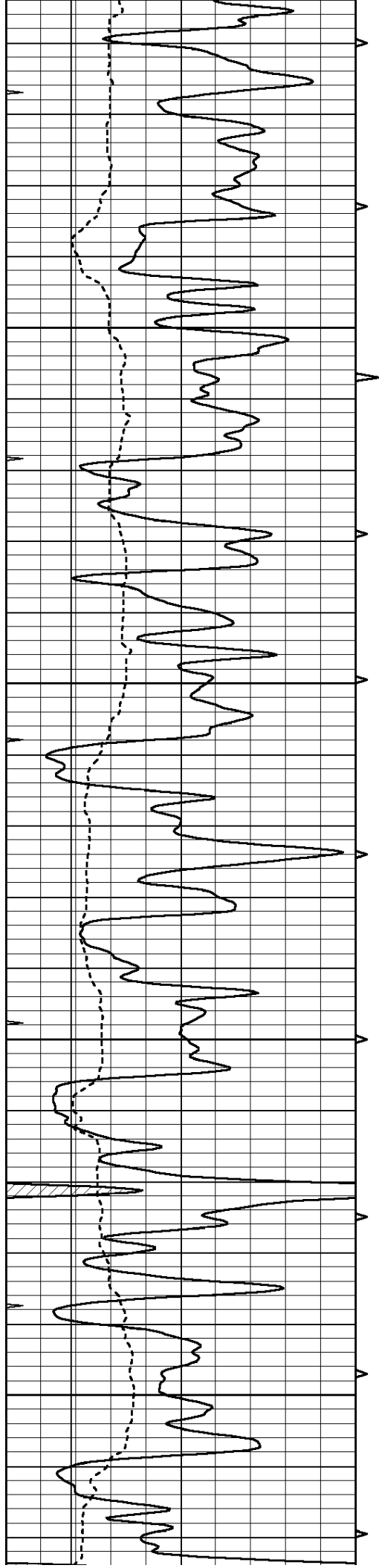
3200

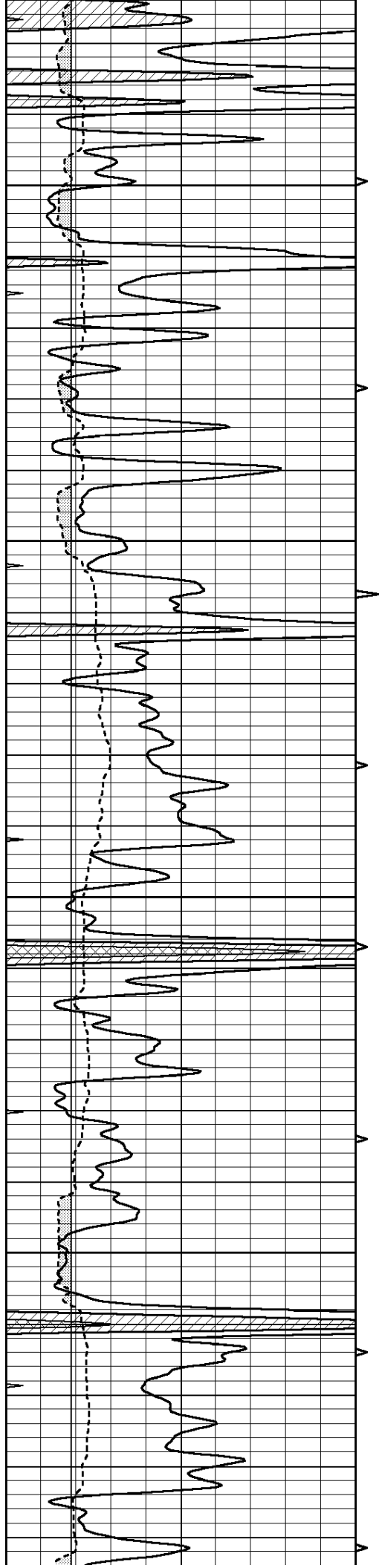
3250

3300







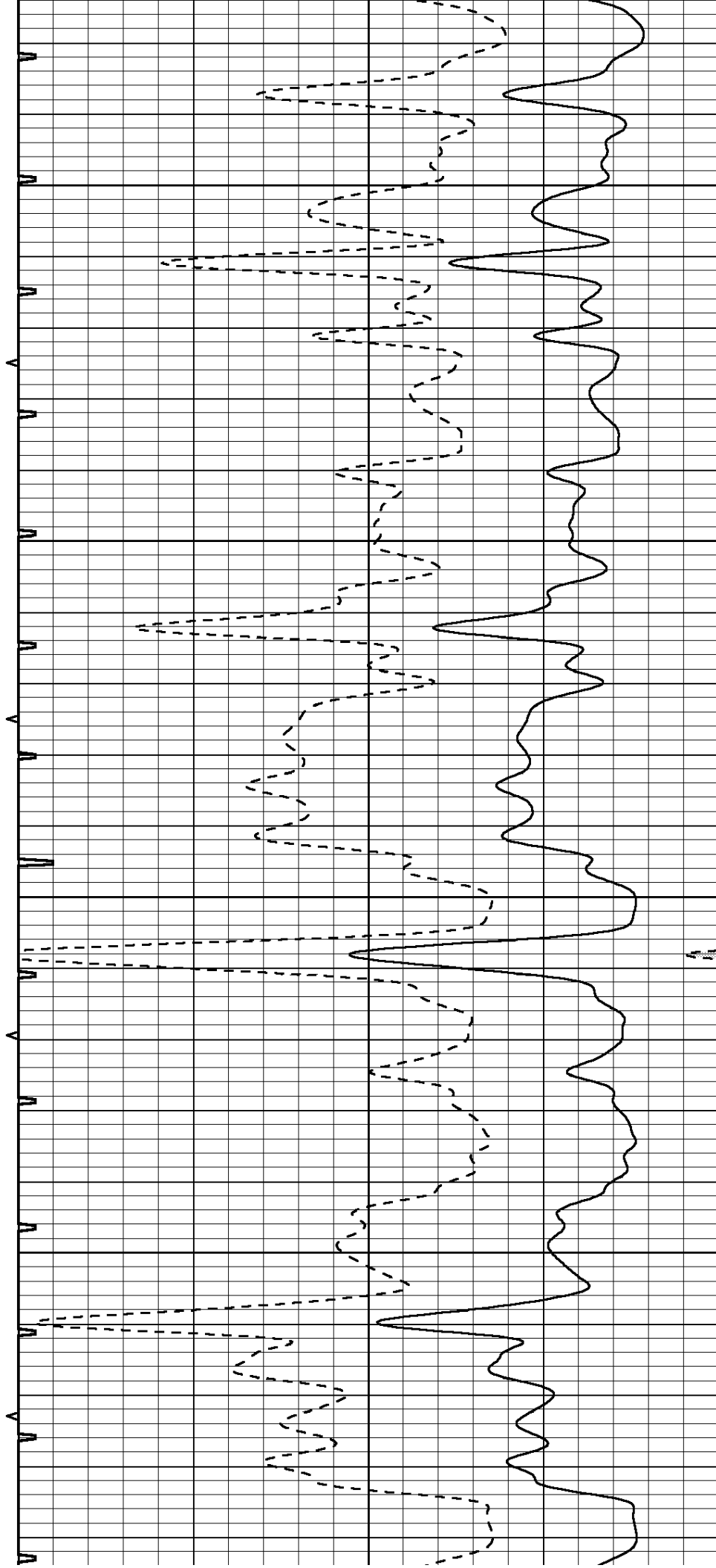


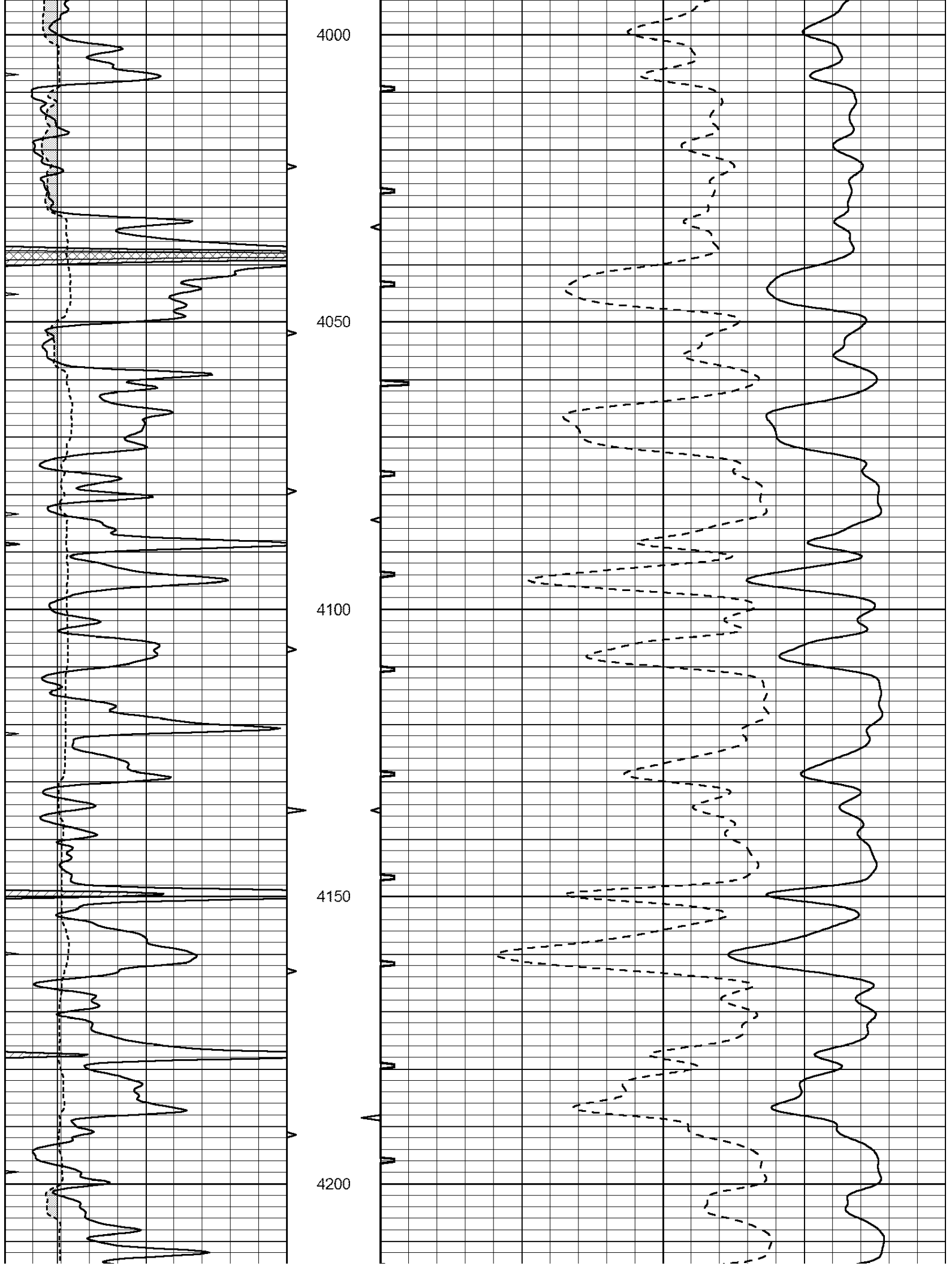
3800

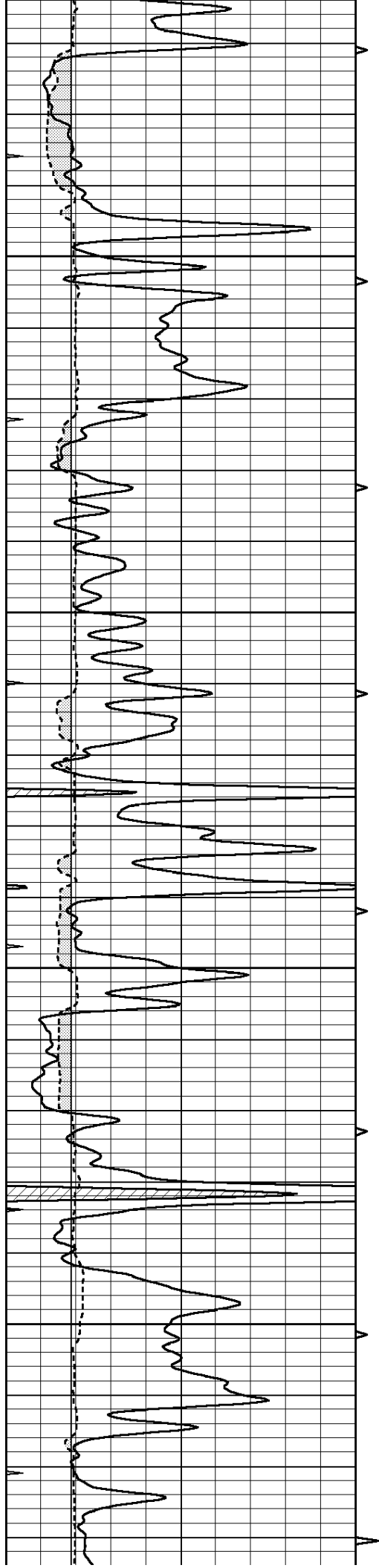
3850

3900

3950





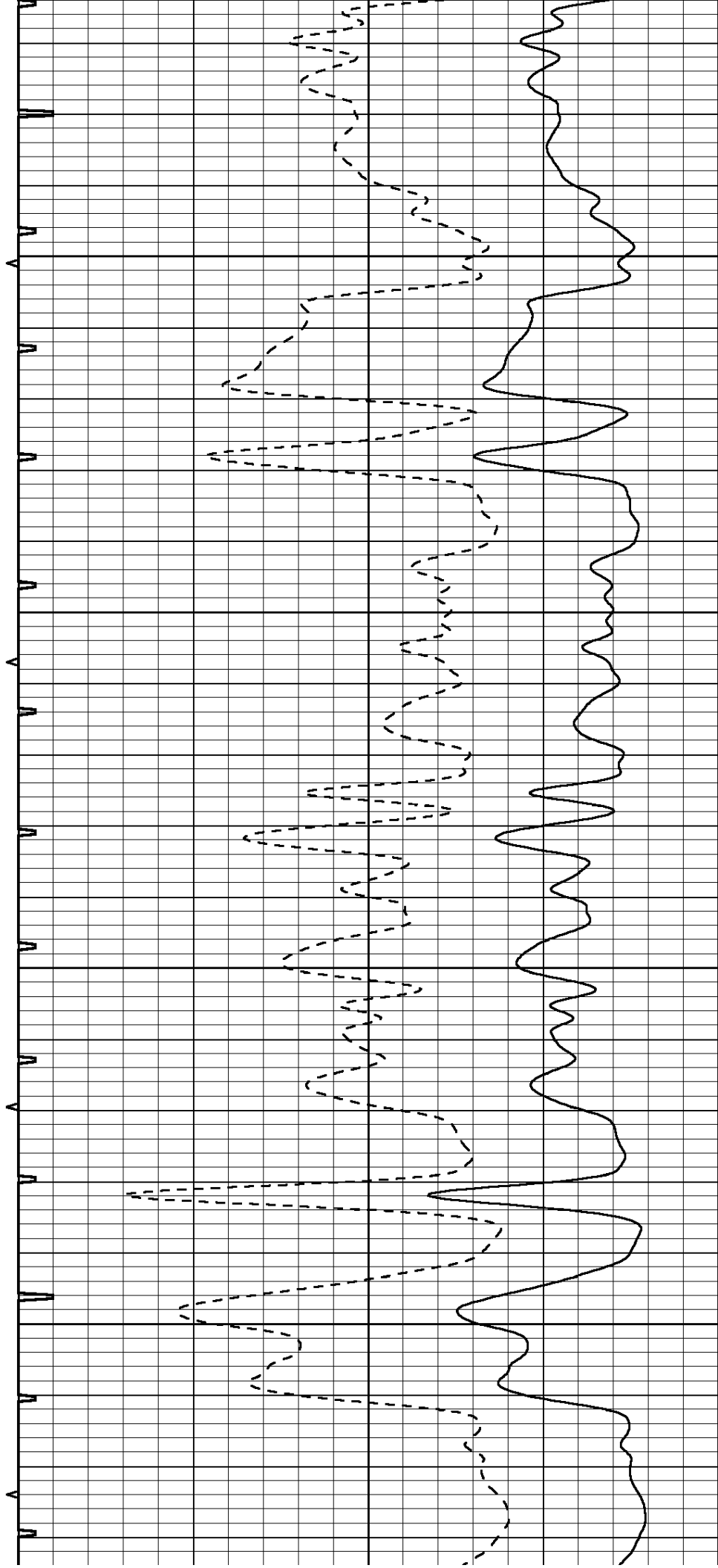


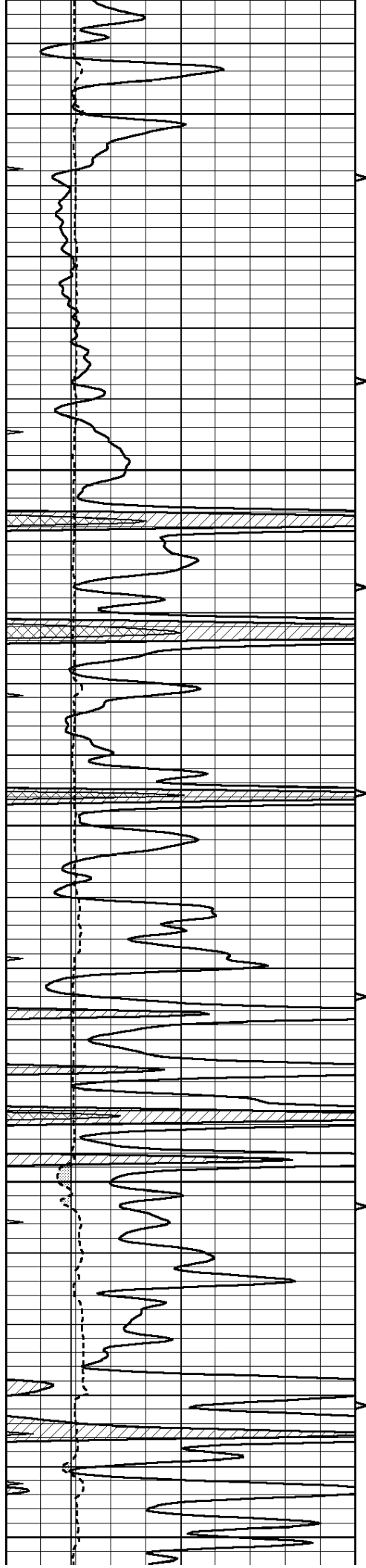
4250

4300

4350

4400





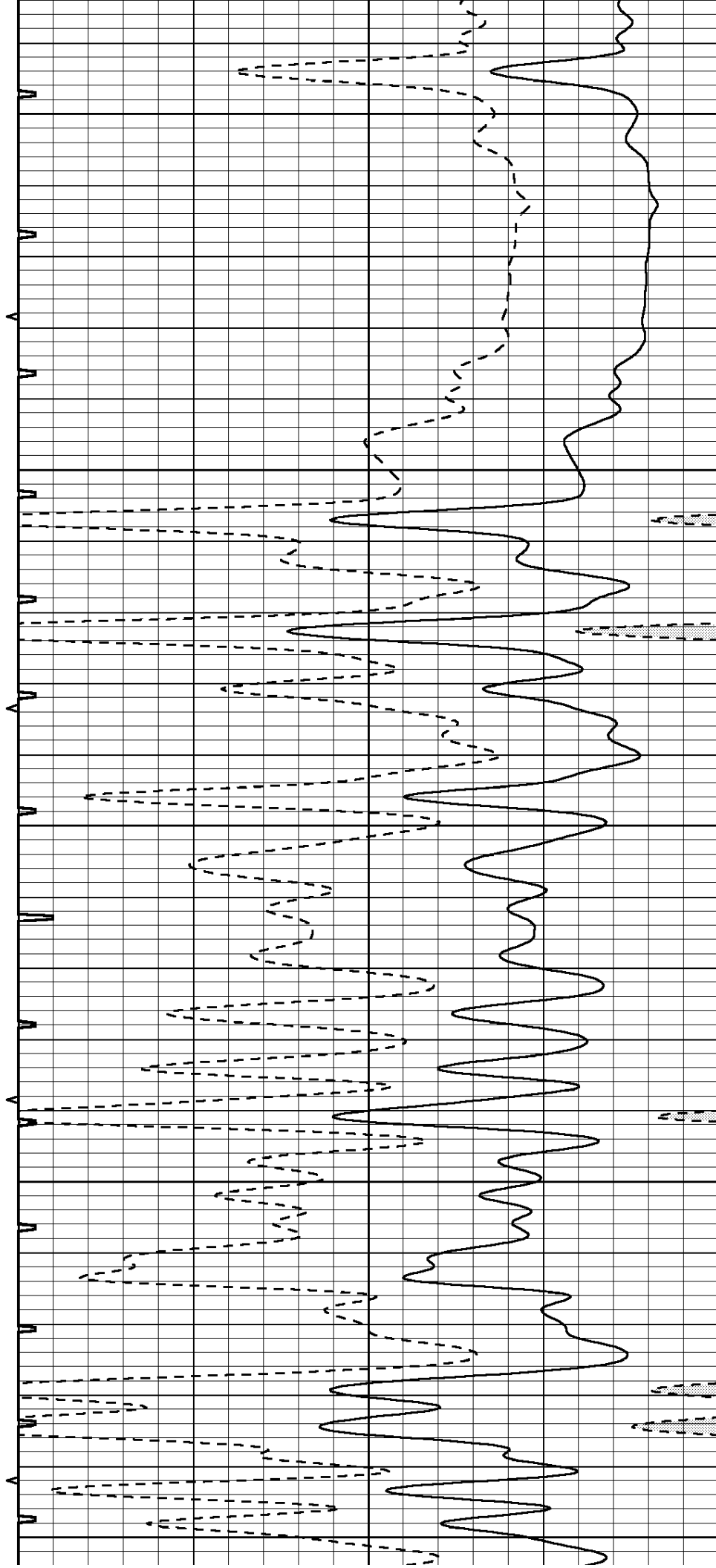
4450

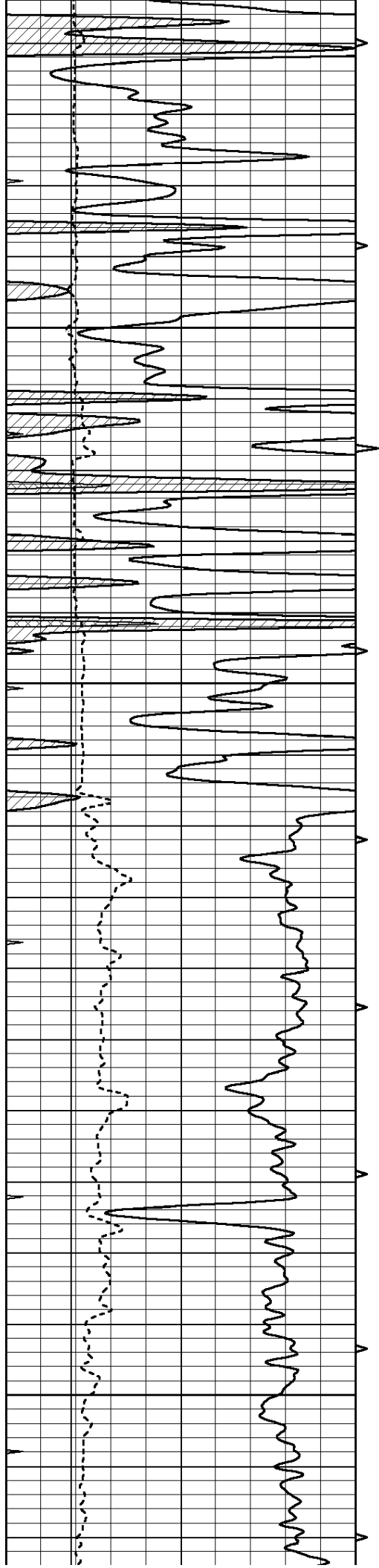
4500

4550

4600

4650



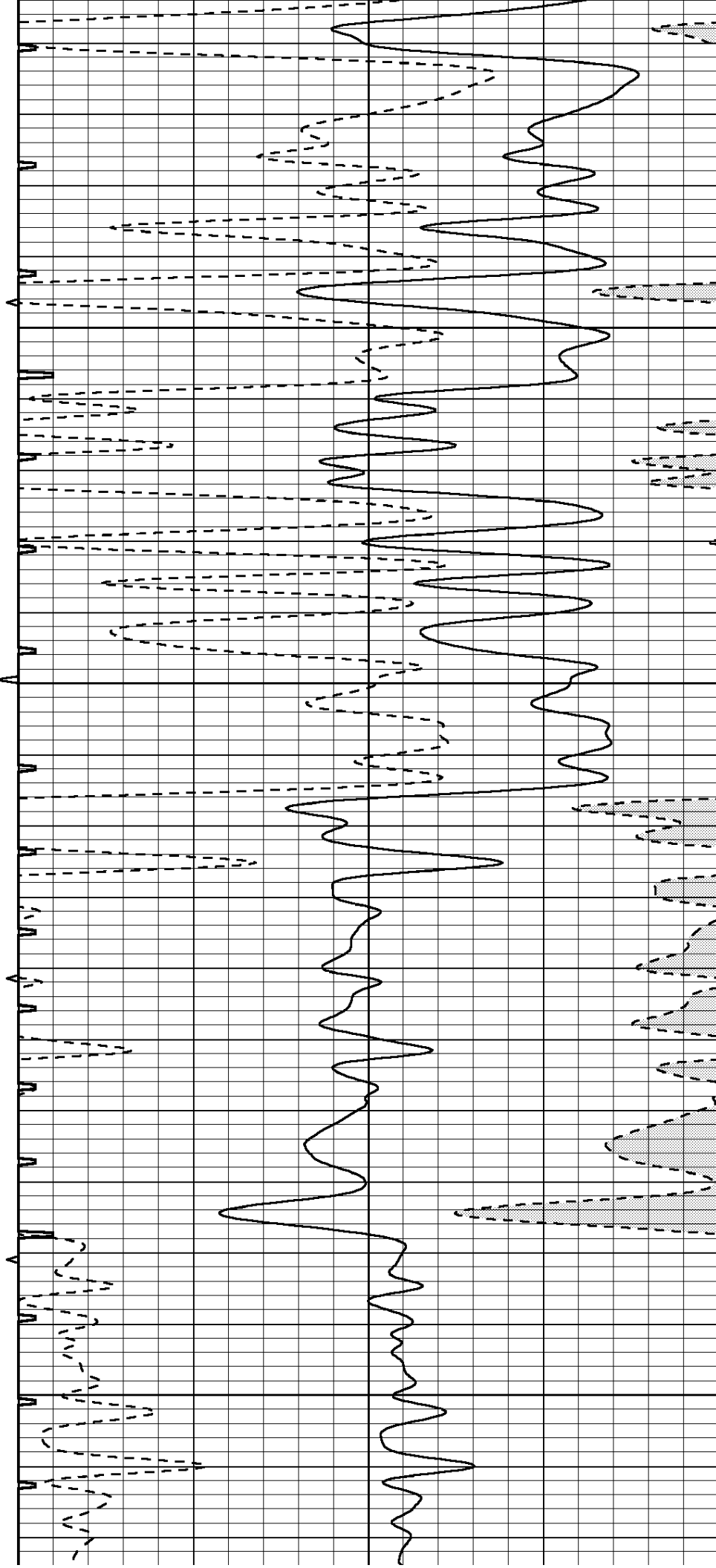


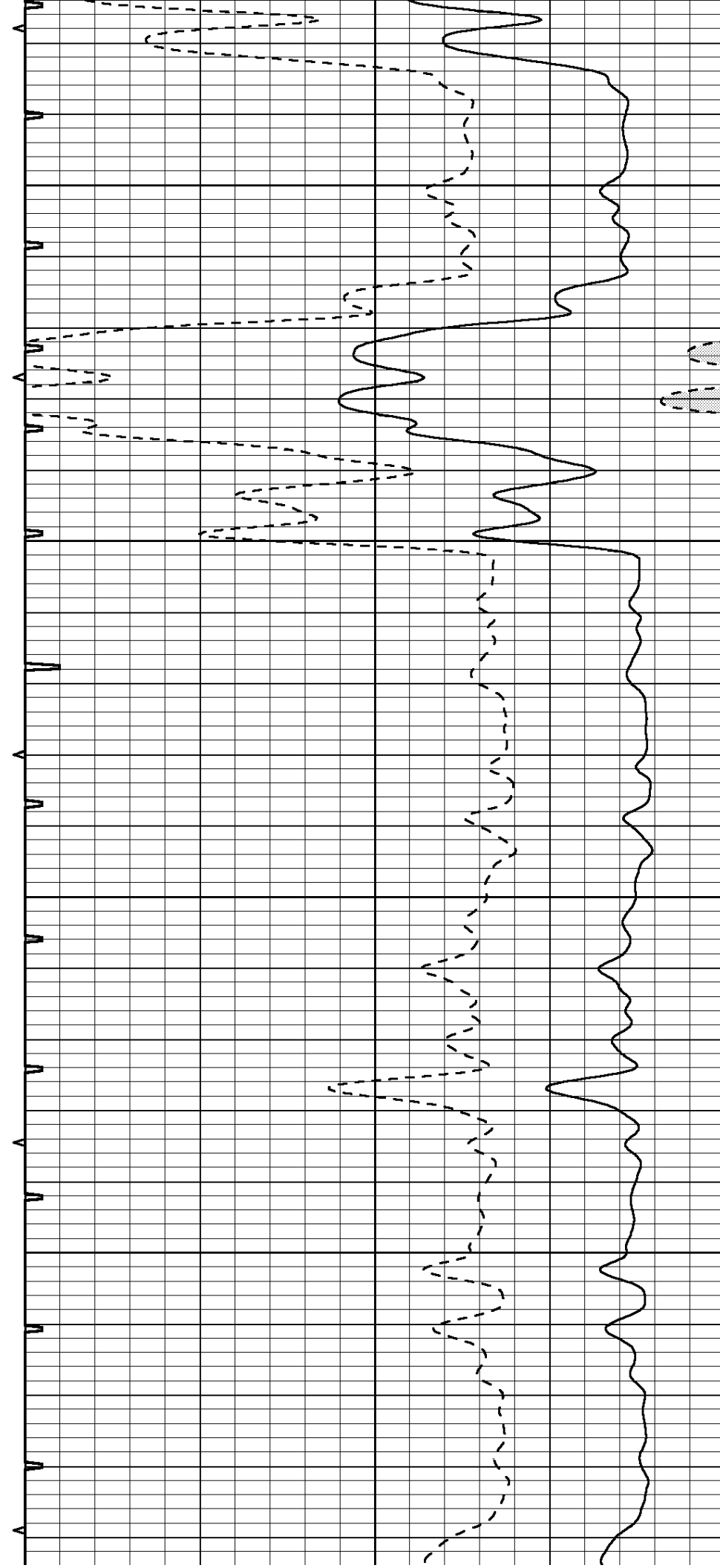
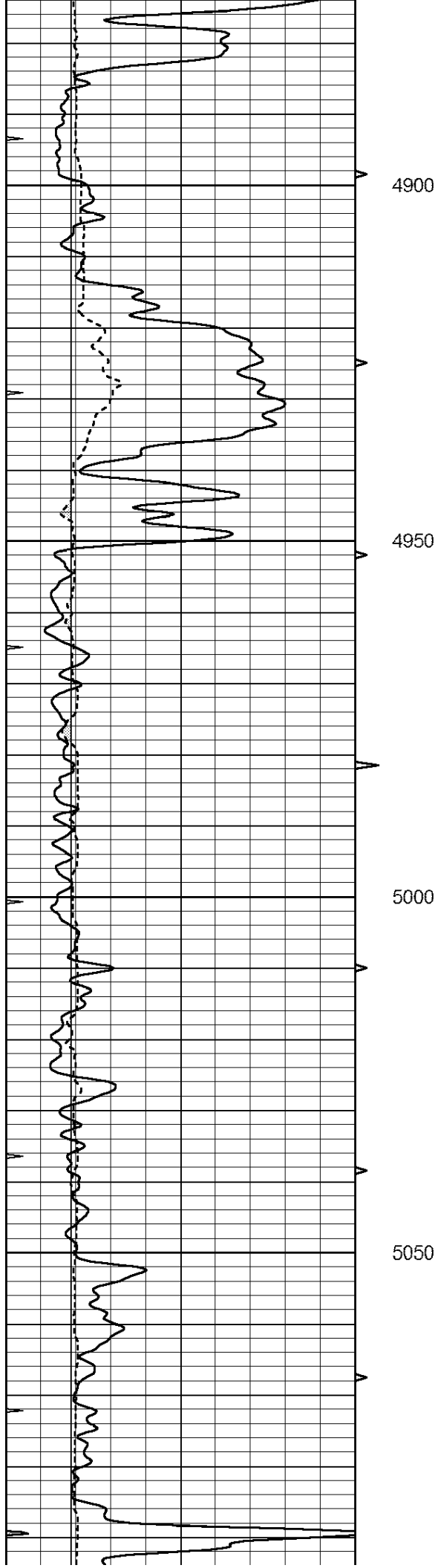
4700

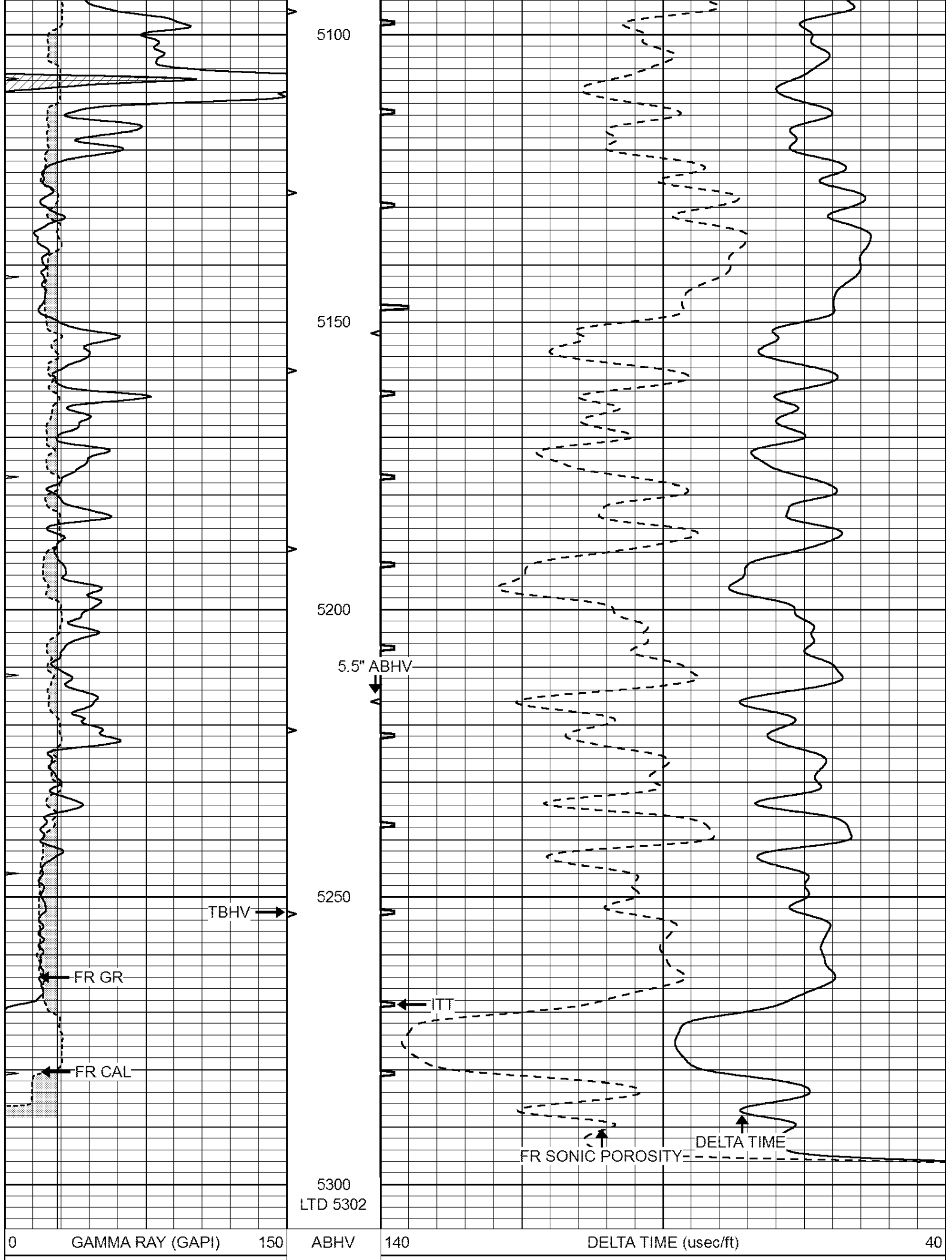
4750

4800

4850







6	CALIPER (in)	16	10 (ft3)	0	30	SONIC POROSITY (pu)	-10
0	MINMK	20	TBHV	0	ITT (msec)	20	
			0 (ft3) 10				



REPEAT SECTION

Database File: 409693pe.db
Dataset Pathname: pass5.2
Presentation Format: slt
Dataset Creation: Sat Oct 13 12:08:55 2012
Charted by: Depth in Feet scaled 1:240

0	GAMMA RAY (GAPI)	150	ABHV	140	DELTA TIME (usec/ft)	40
6	CALIPER (in)	16	10 (ft3) 0	30	SONIC POROSITY (pu)	-10
0	MINMK	20	TBHV	0	ITT (msec)	20
			0 (ft3) 10			

