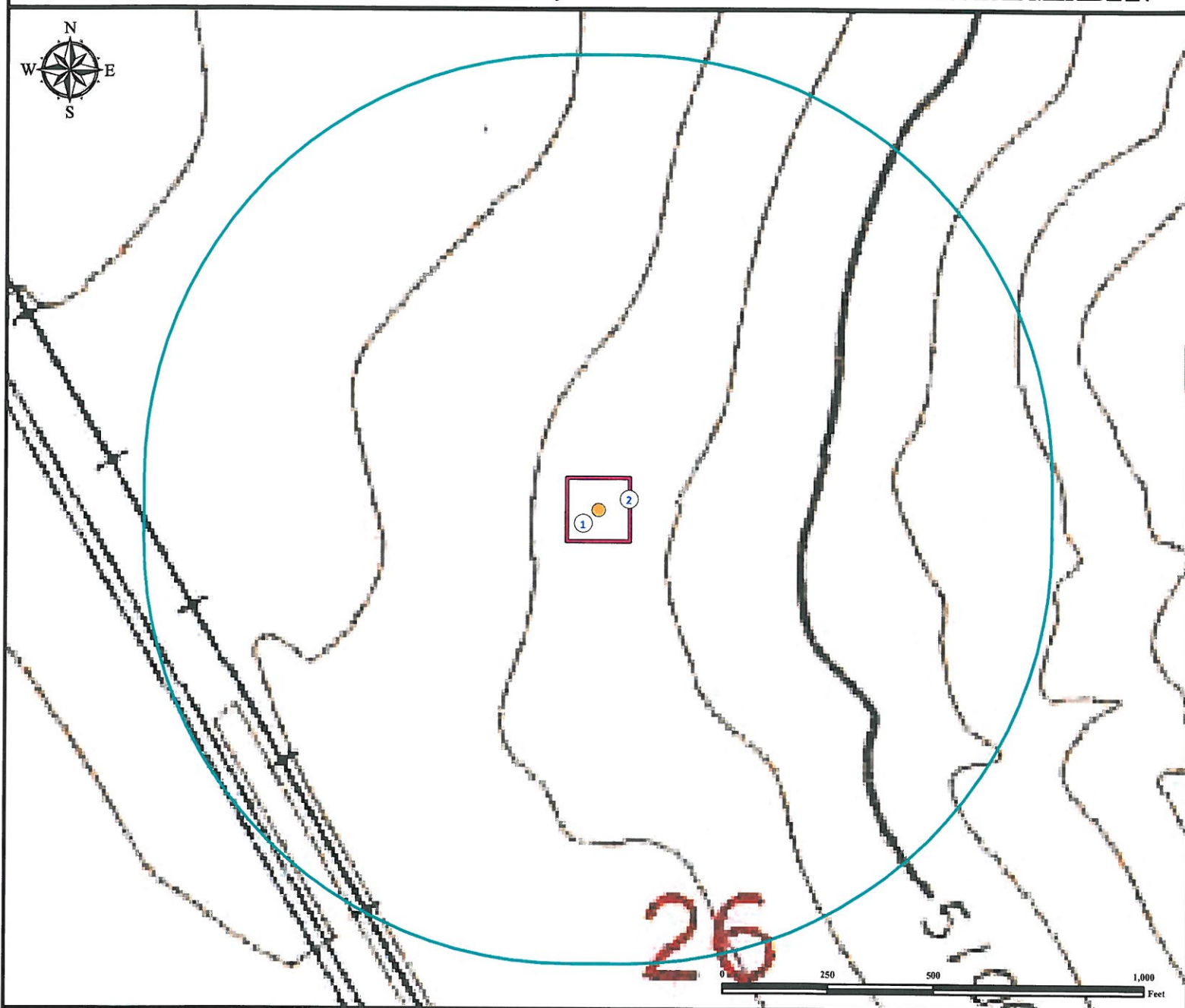


# Hydrology Map

## SMITH 26-22

SE¼ NW¼ SECTION 26, TOWNSHIP 10 NORTH, RANGE 61 WEST OF THE 6TH PRINCIPAL MERIDIAN



1. Proposed Well SMITH 26-22.

2. Operational Disturbance Area.

There are no surface waters within 1000' radius of the disturbance area of the proposed oil and gas location.

### Legend



Proposed Well



Disturbance Area



1000' Radius

### Reference Location

\*\* All Measurements are Made from  
Reference Well SMITH 26-22 \*\*

Lat: 40.808007° Long:-104.174393° (NAD83)  
Elevation: 5087 Feet

Surface Use: Rangeland



Use our resources to find yours!  
[www.petro-fs.com](http://www.petro-fs.com)  
(303) 928-7128

Field Date: 07/23/2012  
Drafting Date: 07/27/2012  
Drafter: DLR  
Revision: 1

Data Sources:  
- Topo courtesy of USGS

Prepared for:

