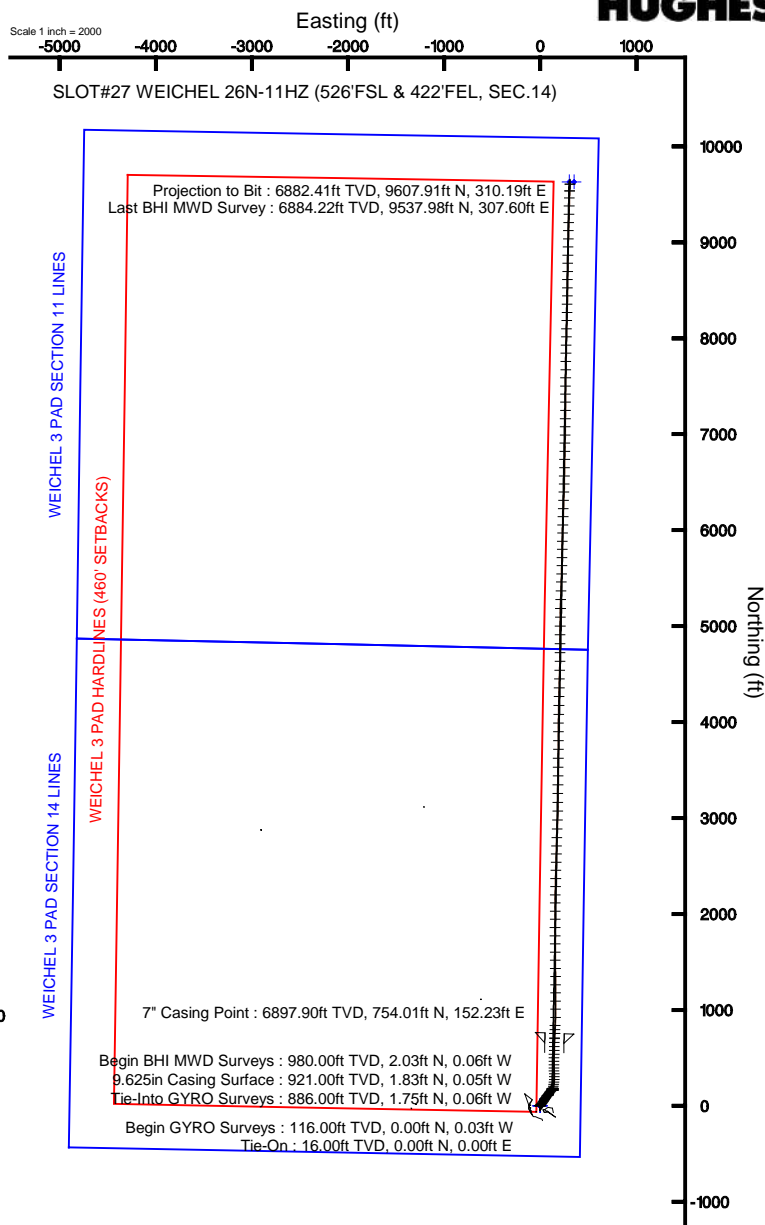
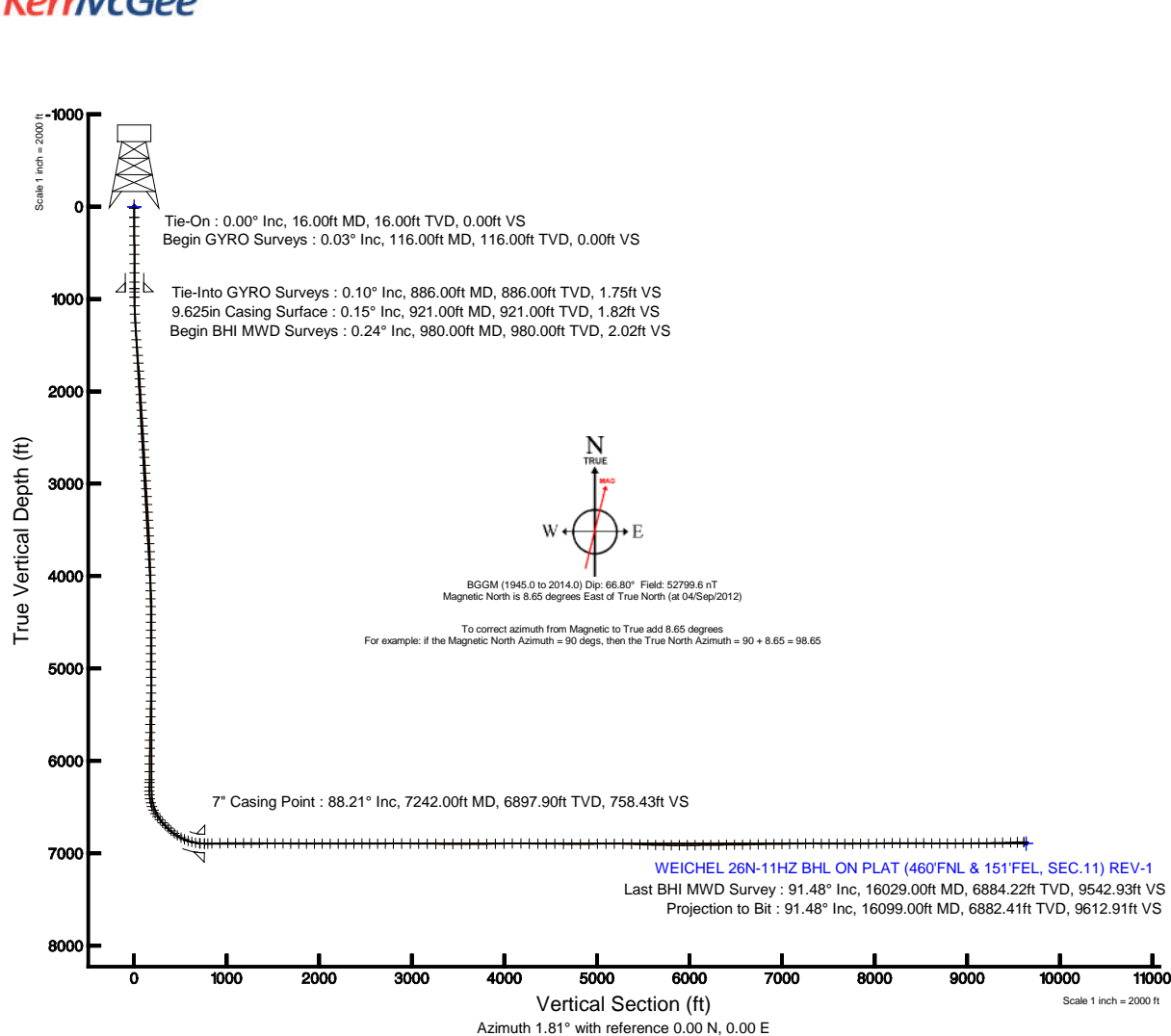


# KERR-MCGEE OIL & GAS ONSHORE LP

Location: COLORADO Slot: SLOT#27 WEICHEL 26N-11HZ (526°FSL & 422°FEL, SEC.14)  
 Field: WELD COUNTY (KERR MCGEE) Well: WEICHEL 26N-11HZ  
 Facility: SEC.14-T2N-R65W Wellbore: WEICHEL 26N-11HZ PWP

Plot reference wellpath is WEICHEL 26N-11HZ (REV-A.0) PWP

True vertical depths are referenced to XTREME 20 (RKB)	Grid System: NAD83 / Lambert Colorado SP, Northern Zone (501), US feet
Measured depths are referenced to XTREME 20 (RKB)	North Reference: True north
XTREME 20 (RKB) to Mean Sea Level: 4895 feet	Scale: True distance
Mean Sea Level to Mud line (At Slot: SLOT#27 WEICHEL 26N-11HZ (526°FSL & 422°FEL, SEC.14)): 0 feet	Depths are in feet
Coordinates are in feet referenced to Slot	Created by: augunora on 04/Oct/2012





# Actual Wellpath Report

WEICHEL 26N-11HZ AWP

Page 1 of 8



## REFERENCE WELLPATH IDENTIFICATION

Operator	KERR-MCGEE OIL & GAS ONSHORE LP	Slot	SLOT#27 WEICHEL 26N-11HZ (526'FSL & 422'FEL, SEC.14)
Area	COLORADO	Well	WEICHEL 26N-11HZ
Field	WELD COUNTY (KERR MCGEE)	Wellbore	WEICHEL 26N-11HZ AWB
Facility	SEC.14-T2N-R65W		

## REPORT SETUP INFORMATION

Projection System	NAD83 / Lambert Colorado SP, Northern Zone (501), US feet	Software System	WellArchitect@ 3.0.0
North Reference	True	User	Augunora
Scale	0.999959	Report Generated	04/Oct/2012 at 16:12
Convergence at slot	0.57° East	Database/Source file	WA_ANADARKO/WEICHEL_26N-11HZ_AWB.xml

## WELLPATH LOCATION

	Local coordinates		Grid coordinates		Geographic coordinates	
	North[ft]	East[ft]	Easting[US ft]	Northing[US ft]	Latitude	Longitude
Slot Location	-4145.11	2868.05	3245181.01	1292399.01	40°07'57.724"N	104°37'23.207"W
Facility Reference Pt			3242272.71	1296515.72	40°08'38.688"N	104°38'00.132"W
Field Reference Pt			3197771.84	1268891.29	40°04'09.600"N	104°47'36.000"W

## WELLPATH DATUM

Calculation method	Minimum curvature	XTREME 20 (RKB) to Facility Vertical Datum	4895.00ft
Horizontal Reference Pt	Slot	XTREME 20 (RKB) to Mean Sea Level	4895.00ft
Vertical Reference Pt	XTREME 20 (RKB)	XTREME 20 (RKB) to Mud Line at Slot (SLOT#27 WEICHEL 26N-11HZ (526'FSL & 422'FEL, SEC.14))	4895.00ft
MD Reference Pt	XTREME 20 (RKB)	Section Origin	N 0.00, E 0.00 ft
Field Vertical Reference	Mean Sea Level	Section Azimuth	1.85°



# Actual Wellpath Report

WEICHEL 26N-11HZ AWP

Page 2 of 8



## REFERENCE WELLPATH IDENTIFICATION

Operator	KERR-MCGEE OIL & GAS ONSHORE LP	Slot	SLOT#27 WEICHEL 26N-11HZ (526'FSL & 422'FEL, SEC.14)
Area	COLORADO	Well	WEICHEL 26N-11HZ
Field	WELD COUNTY (KERR MCGEE)	Wellbore	WEICHEL 26N-11HZ AWB
Facility	SEC.14-T2N-R65W		

## WELLPATH DATA (201 stations) † = interpolated/extrapolated station

MD [ft]	Inclination [°]	Azimuth [°]	TVD [ft]	Vert Sect [ft]	North [ft]	East [ft]	Latitude	Longitude	DLS [°/100ft]	Comments
0.00†	0.000	279.570	0.00	0.00	0.00	0.00	40°07'57.724"N	104°37'23.207"W	0.00	
16.00	0.000	279.570	16.00	0.00	0.00	0.00	40°07'57.724"N	104°37'23.207"W	0.00	Tie-On
116.00	0.030	279.570	116.00	0.00	0.00	-0.03	40°07'57.724"N	104°37'23.207"W	0.03	Begin GYRO Surveys
216.00	0.120	311.830	216.00	0.07	0.08	-0.13	40°07'57.725"N	104°37'23.209"W	0.10	
316.00	0.270	303.770	316.00	0.27	0.28	-0.40	40°07'57.727"N	104°37'23.212"W	0.15	
416.00	0.210	308.290	416.00	0.50	0.52	-0.74	40°07'57.729"N	104°37'23.217"W	0.06	
516.00	0.300	32.870	516.00	0.83	0.86	-0.75	40°07'57.732"N	104°37'23.217"W	0.35	
616.00	0.190	15.920	616.00	1.22	1.24	-0.56	40°07'57.736"N	104°37'23.214"W	0.13	
716.00	0.210	52.530	716.00	1.49	1.51	-0.37	40°07'57.739"N	104°37'23.212"W	0.13	
816.00	0.110	63.700	816.00	1.66	1.66	-0.14	40°07'57.740"N	104°37'23.209"W	0.10	
886.00	0.100	13.950	886.00	1.75	1.75	-0.06	40°07'57.741"N	104°37'23.208"W	0.13	Tie-Into GYRO Surveys
980.00	0.240	354.630	980.00	2.02	2.03	-0.06	40°07'57.744"N	104°37'23.208"W	0.16	Begin BHI MWD Surveys
1072.00	1.860	38.150	1071.98	3.42	3.39	0.85	40°07'57.758"N	104°37'23.196"W	1.84	
1163.00	3.220	38.130	1162.89	6.67	6.56	3.34	40°07'57.789"N	104°37'23.164"W	1.49	
1255.00	4.410	48.140	1254.68	11.20	10.96	7.57	40°07'57.832"N	104°37'23.110"W	1.48	
1347.00	5.140	45.800	1346.36	16.61	16.19	13.15	40°07'57.884"N	104°37'23.038"W	0.82	
1439.00	5.190	31.940	1437.99	23.17	22.60	18.31	40°07'57.947"N	104°37'22.971"W	1.35	
1526.00	5.430	35.750	1524.62	30.00	29.28	22.80	40°07'58.013"N	104°37'22.913"W	0.49	
1612.00	5.590	37.030	1610.22	36.80	35.92	27.70	40°07'58.079"N	104°37'22.850"W	0.23	
1697.00	5.900	37.730	1694.79	43.72	42.68	32.86	40°07'58.146"N	104°37'22.784"W	0.37	
1782.00	5.740	30.250	1779.36	51.00	49.81	37.68	40°07'58.216"N	104°37'22.722"W	0.91	
1868.00	4.450	30.590	1865.02	57.71	56.40	41.54	40°07'58.281"N	104°37'22.672"W	1.50	
1953.00	4.180	34.790	1949.77	63.20	61.78	44.99	40°07'58.335"N	104°37'22.628"W	0.49	
2038.00	4.210	34.810	2034.55	68.42	66.88	48.54	40°07'58.385"N	104°37'22.582"W	0.04	
2123.00	4.100	35.360	2119.32	73.57	71.92	52.08	40°07'58.435"N	104°37'22.537"W	0.14	
2208.00	3.890	32.340	2204.12	78.59	76.84	55.38	40°07'58.483"N	104°37'22.494"W	0.35	
2294.00	4.080	30.470	2289.91	83.78	81.94	58.49	40°07'58.534"N	104°37'22.454"W	0.27	
2379.00	3.830	29.060	2374.71	88.96	87.03	61.40	40°07'58.584"N	104°37'22.416"W	0.32	
2464.00	4.510	36.540	2459.48	94.24	92.19	64.77	40°07'58.635"N	104°37'22.373"W	1.02	
2549.00	4.210	39.060	2544.24	99.47	97.30	68.73	40°07'58.686"N	104°37'22.322"W	0.42	
2635.00	3.700	37.380	2630.03	104.24	101.96	72.40	40°07'58.732"N	104°37'22.275"W	0.61	
2720.00	4.360	38.640	2714.82	109.06	106.66	76.08	40°07'58.778"N	104°37'22.227"W	0.78	
2805.00	3.570	36.240	2799.62	113.83	111.32	79.67	40°07'58.824"N	104°37'22.181"W	0.95	
2890.00	4.450	40.010	2884.41	118.61	115.98	83.35	40°07'58.870"N	104°37'22.134"W	1.08	
2975.00	4.500	37.280	2969.15	123.92	121.16	87.49	40°07'58.921"N	104°37'22.081"W	0.26	
3061.00	3.980	40.170	3054.91	129.01	126.12	91.46	40°07'58.970"N	104°37'22.030"W	0.65	
3146.00	4.010	27.750	3139.71	134.00	131.01	94.75	40°07'59.019"N	104°37'21.987"W	1.02	
3231.00	4.160	36.680	3224.49	139.20	136.11	97.97	40°07'59.069"N	104°37'21.946"W	0.77	
3316.00	4.270	37.870	3309.26	144.29	141.08	101.75	40°07'59.118"N	104°37'21.897"W	0.17	
3401.00	4.720	41.010	3394.00	149.56	146.22	105.99	40°07'59.169"N	104°37'21.842"W	0.60	
3486.00	3.480	38.000	3478.78	154.36	150.89	109.88	40°07'59.215"N	104°37'21.792"W	1.48	
3572.00	3.690	41.400	3564.61	158.60	155.02	113.31	40°07'59.256"N	104°37'21.748"W	0.35	
3657.00	3.760	36.820	3649.43	162.99	159.31	116.79	40°07'59.298"N	104°37'21.703"W	0.36	
3742.00	2.590	34.210	3734.30	166.90	163.13	119.54	40°07'59.336"N	104°37'21.668"W	1.39	
3827.00	2.160	36.210	3819.23	169.84	166.01	121.57	40°07'59.364"N	104°37'21.642"W	0.52	



# Actual Wellpath Report

WEICHEL 26N-11HZ AWP

Page 3 of 8



## REFERENCE WELLPATH IDENTIFICATION

Operator	KERR-MCGEE OIL & GAS ONSHORE LP	Slot	SLOT#27 WEICHEL 26N-11HZ (526'FSL & 422'FEL, SEC.14)
Area	COLORADO	Well	WEICHEL 26N-11HZ
Field	WELD COUNTY (KERR MCGEE)	Wellbore	WEICHEL 26N-11HZ AWB
Facility	SEC.14-T2N-R65W		

## WELLPATH DATA (201 stations)

MD [ft]	Inclination [°]	Azimuth [°]	TVD [ft]	Vert Sect [ft]	North [ft]	East [ft]	Latitude	Longitude	DLS [°/100ft]	Comments
3913.00	2.430	41.540	3905.16	172.58	168.68	123.73	40°07'59.391"N	104°37'21.614"W	0.40	
3998.00	1.720	59.240	3990.10	174.66	170.68	126.03	40°07'59.411"N	104°37'21.584"W	1.12	
4083.00	0.790	55.370	4075.08	175.69	171.67	127.60	40°07'59.420"N	104°37'21.564"W	1.10	
4168.00	0.310	258.720	4160.08	175.99	171.95	127.86	40°07'59.423"N	104°37'21.561"W	1.27	
4253.00	0.760	329.310	4245.08	176.41	172.39	127.35	40°07'59.428"N	104°37'21.567"W	0.85	
4339.00	0.930	327.270	4331.07	177.47	173.47	126.68	40°07'59.438"N	104°37'21.576"W	0.20	
4424.00	0.260	344.930	4416.06	178.22	174.24	126.26	40°07'59.446"N	104°37'21.582"W	0.81	
4509.00	0.560	187.410	4501.06	177.99	174.01	126.15	40°07'59.444"N	104°37'21.583"W	0.95	
4594.00	0.090	344.850	4586.06	177.64	173.66	126.08	40°07'59.440"N	104°37'21.584"W	0.76	
4679.00	0.280	317.510	4671.06	177.85	173.88	125.92	40°07'59.442"N	104°37'21.586"W	0.24	
4765.00	0.420	49.890	4757.06	178.22	174.24	126.02	40°07'59.446"N	104°37'21.585"W	0.60	
4850.00	1.340	78.810	4842.05	178.65	174.63	127.24	40°07'59.450"N	104°37'21.569"W	1.17	
4935.00	2.650	95.950	4927.00	178.73	174.62	130.16	40°07'59.450"N	104°37'21.531"W	1.68	
5020.00	2.090	76.610	5011.92	179.00	174.78	133.63	40°07'59.451"N	104°37'21.487"W	1.14	
5106.00	1.650	42.890	5097.88	180.34	176.05	136.00	40°07'59.464"N	104°37'21.456"W	1.35	
5191.00	0.720	20.840	5182.86	181.77	177.44	137.02	40°07'59.478"N	104°37'21.443"W	1.20	
5276.00	2.000	213.380	5267.85	181.01	176.70	136.39	40°07'59.470"N	104°37'21.451"W	3.19	
5361.00	1.810	214.320	5352.80	178.62	174.36	134.82	40°07'59.447"N	104°37'21.471"W	0.23	
5447.00	1.540	210.520	5438.77	176.46	172.24	133.47	40°07'59.426"N	104°37'21.489"W	0.34	
5532.00	1.310	194.590	5523.74	174.51	170.32	132.64	40°07'59.407"N	104°37'21.499"W	0.54	
5617.00	1.190	185.390	5608.72	172.68	168.50	132.31	40°07'59.389"N	104°37'21.503"W	0.27	
5702.00	0.850	179.060	5693.71	171.17	166.99	132.24	40°07'59.374"N	104°37'21.504"W	0.42	
5787.00	0.970	182.180	5778.70	169.82	165.64	132.22	40°07'59.361"N	104°37'21.505"W	0.15	
5873.00	1.010	181.330	5864.68	168.33	164.15	132.18	40°07'59.346"N	104°37'21.505"W	0.05	
5958.00	0.810	172.150	5949.67	166.99	162.81	132.24	40°07'59.333"N	104°37'21.504"W	0.29	
6043.00	0.700	188.910	6034.66	165.88	161.70	132.25	40°07'59.322"N	104°37'21.504"W	0.29	
6128.00	0.620	180.640	6119.66	164.91	160.73	132.16	40°07'59.312"N	104°37'21.505"W	0.15	
6214.00	0.220	145.970	6205.66	164.31	160.13	132.25	40°07'59.306"N	104°37'21.504"W	0.53	
6243.00	0.230	154.800	6234.66	164.21	160.03	132.30	40°07'59.305"N	104°37'21.504"W	0.12	
6294.00	0.940	195.720	6285.65	163.72	159.53	132.23	40°07'59.301"N	104°37'21.505"W	1.53	
6336.00	2.430	258.510	6327.64	163.18	159.02	131.27	40°07'59.295"N	104°37'21.517"W	5.16	
6379.00	3.850	347.660	6370.59	164.37	160.25	130.07	40°07'59.308"N	104°37'21.532"W	10.51	
6421.00	9.130	9.510	6412.31	169.04	164.92	130.31	40°07'59.354"N	104°37'21.529"W	13.66	
6464.00	14.490	9.850	6454.39	177.75	173.59	131.80	40°07'59.439"N	104°37'21.510"W	12.47	
6506.00	20.390	13.300	6494.44	190.14	185.90	134.38	40°07'59.561"N	104°37'21.477"W	14.26	
6550.00	25.300	10.700	6534.98	206.95	202.61	137.90	40°07'59.726"N	104°37'21.432"W	11.39	
6592.00	31.590	10.050	6571.89	226.73	222.28	141.48	40°07'59.921"N	104°37'21.385"W	14.99	
6635.00	36.870	6.910	6607.43	250.74	246.19	145.00	40°08'00.157"N	104°37'21.340"W	12.94	
6677.00	42.090	4.080	6639.84	277.38	272.76	147.52	40°08'00.419"N	104°37'21.308"W	13.14	
6720.00	44.820	358.900	6671.06	306.93	302.30	148.26	40°08'00.711"N	104°37'21.298"W	10.43	
6762.00	46.090	356.910	6700.52	336.79	332.21	147.16	40°08'01.007"N	104°37'21.312"W	4.53	
6805.00	45.750	356.460	6730.44	367.55	363.05	145.37	40°08'01.312"N	104°37'21.335"W	1.09	
6847.00	47.470	357.400	6759.29	397.96	393.53	143.74	40°08'01.613"N	104°37'21.356"W	4.41	
6890.00	52.570	0.520	6786.91	430.85	426.45	143.18	40°08'01.938"N	104°37'21.364"W	13.10	
6932.00	59.080	2.260	6810.49	465.58	461.17	144.04	40°08'02.281"N	104°37'21.352"W	15.87	



# Actual Wellpath Report

WEICHEL 26N-11HZ AWP

Page 4 of 8



## REFERENCE WELLPATH IDENTIFICATION

Operator	KERR-MCGEE OIL & GAS ONSHORE LP	Slot	SLOT#27 WEICHEL 26N-11HZ (526'FSL & 422'FEL, SEC.14)
Area	COLORADO	Well	WEICHEL 26N-11HZ
Field	WELD COUNTY (KERR MCGEE)	Wellbore	WEICHEL 26N-11HZ AWB
Facility	SEC.14-T2N-R65W		

## WELLPATH DATA (201 stations) † = interpolated/extrapolated station

MD [ft]	Inclination [°]	Azimuth [°]	TVD [ft]	Vert Sect [ft]	North [ft]	East [ft]	Latitude	Longitude	DLS [°/100ft]	Comments
6976.00	61.060	0.890	6832.45	503.71	499.28	145.08	40°08'02.658"N	104°37'21.339"W	5.25	
7018.00	65.400	1.150	6851.36	541.19	536.77	145.75	40°08'03.028"N	104°37'21.330"W	10.35	
7061.00	69.320	1.060	6867.91	580.87	576.44	146.52	40°08'03.420"N	104°37'21.321"W	9.12	
7103.00	75.530	1.130	6880.58	620.88	616.45	147.28	40°08'03.816"N	104°37'21.311"W	14.79	
7146.00	81.180	2.090	6889.26	662.98	658.53	148.47	40°08'04.232"N	104°37'21.295"W	13.32	
7188.00	84.460	2.410	6894.51	704.64	700.17	150.11	40°08'04.643"N	104°37'21.274"W	7.85	
7195.00	85.070	1.980	6895.15	711.62	707.13	150.37	40°08'04.712"N	104°37'21.271"W	10.65	
7242.00†	88.205	2.556	6897.90	758.53	754.01	152.23	40°08'05.175"N	104°37'21.247"W	6.78	7" Casing Point
7280.00	90.740	3.020	6898.25	796.52	791.96	154.08	40°08'05.550"N	104°37'21.223"W	6.78	
7323.00	91.600	3.010	6897.37	839.50	834.89	156.34	40°08'05.974"N	104°37'21.194"W	2.00	
7409.00	91.660	1.960	6894.93	925.46	920.77	160.07	40°08'06.823"N	104°37'21.146"W	1.22	
7494.00	91.200	0.400	6892.81	1010.42	1005.72	161.82	40°08'07.663"N	104°37'21.124"W	1.91	
7579.00	90.060	359.720	6891.87	1095.37	1090.72	161.90	40°08'08.503"N	104°37'21.122"W	1.56	
7664.00	89.350	359.560	6892.31	1180.31	1175.71	161.37	40°08'09.343"N	104°37'21.129"W	0.86	
7749.00	89.720	359.810	6893.00	1265.25	1260.71	160.90	40°08'10.182"N	104°37'21.135"W	0.53	
7835.00	89.040	359.050	6893.93	1351.16	1346.70	160.05	40°08'11.032"N	104°37'21.146"W	1.19	
7920.00	89.470	359.500	6895.04	1436.07	1431.68	158.97	40°08'11.872"N	104°37'21.160"W	0.73	
8005.00	89.750	359.510	6895.61	1521.00	1516.68	158.24	40°08'12.712"N	104°37'21.170"W	0.33	
8090.00	88.760	359.320	6896.72	1605.91	1601.67	157.37	40°08'13.552"N	104°37'21.181"W	1.19	
8175.00	89.200	359.750	6898.23	1690.83	1686.65	156.68	40°08'14.392"N	104°37'21.190"W	0.72	
8260.00	88.950	359.500	6899.60	1775.75	1771.64	156.12	40°08'15.231"N	104°37'21.197"W	0.42	
8345.00	90.210	0.370	6900.23	1860.70	1856.63	156.03	40°08'16.071"N	104°37'21.198"W	1.80	
8431.00	90.370	0.260	6899.79	1946.67	1942.63	156.50	40°08'16.921"N	104°37'21.192"W	0.23	
8516.00	90.280	0.400	6899.31	2031.64	2027.63	156.99	40°08'17.761"N	104°37'21.186"W	0.20	
8601.00	90.330	0.220	6898.86	2116.61	2112.62	157.45	40°08'18.601"N	104°37'21.180"W	0.22	
8687.00	89.630	0.960	6898.89	2202.58	2198.62	158.34	40°08'19.451"N	104°37'21.168"W	1.18	
8772.00	90.490	1.750	6898.80	2287.58	2283.59	160.35	40°08'20.291"N	104°37'21.142"W	1.37	
8857.00	89.970	0.860	6898.46	2372.57	2368.57	162.28	40°08'21.130"N	104°37'21.117"W	1.21	
8943.00	90.400	2.080	6898.18	2458.57	2454.54	164.49	40°08'21.980"N	104°37'21.089"W	1.50	
9028.00	89.510	1.430	6898.25	2543.57	2539.50	167.09	40°08'22.820"N	104°37'21.056"W	1.30	
9113.00	90.000	1.630	6898.61	2628.56	2624.47	169.36	40°08'23.659"N	104°37'21.026"W	0.62	
9198.00	90.520	1.760	6898.22	2713.56	2709.43	171.87	40°08'24.499"N	104°37'20.994"W	0.63	
9283.00	90.270	1.830	6897.64	2798.56	2794.38	174.54	40°08'25.338"N	104°37'20.960"W	0.31	
9375.00	89.870	1.830	6897.53	2890.56	2886.34	177.48	40°08'26.247"N	104°37'20.922"W	0.43	
9467.00	89.630	2.030	6897.93	2982.56	2978.28	180.57	40°08'27.156"N	104°37'20.882"W	0.34	
9559.00	89.130	1.420	6898.92	3074.55	3070.24	183.34	40°08'28.064"N	104°37'20.846"W	0.86	
9651.00	89.100	359.970	6900.34	3166.52	3162.22	184.46	40°08'28.973"N	104°37'20.832"W	1.58	
9743.00	89.840	0.810	6901.20	3258.49	3254.21	185.08	40°08'29.882"N	104°37'20.824"W	1.22	
9835.00	89.870	0.630	6901.43	3350.47	3346.20	186.24	40°08'30.791"N	104°37'20.809"W	0.20	
9927.00	90.000	0.490	6901.53	3442.44	3438.20	187.14	40°08'31.701"N	104°37'20.797"W	0.21	
10019.00	90.030	0.550	6901.51	3534.42	3530.19	187.98	40°08'32.610"N	104°37'20.787"W	0.07	
10111.00	89.750	0.630	6901.68	3626.40	3622.19	188.92	40°08'33.519"N	104°37'20.774"W	0.32	
10203.00	89.960	0.450	6901.92	3718.37	3714.18	189.79	40°08'34.428"N	104°37'20.763"W	0.30	
10295.00	90.670	0.470	6901.41	3810.34	3806.18	190.53	40°08'35.337"N	104°37'20.754"W	0.77	
10387.00	91.100	0.540	6899.99	3902.31	3898.16	191.34	40°08'36.246"N	104°37'20.743"W	0.47	



# Actual Wellpath Report

WEICHEL 26N-11HZ AWP

Page 5 of 8



## REFERENCE WELLPATH IDENTIFICATION

Operator	KERR-MCGEE OIL & GAS ONSHORE LP	Slot	SLOT#27 WEICHEL 26N-11HZ (526'FSL & 422'FEL, SEC.14)
Area	COLORADO	Well	WEICHEL 26N-11HZ
Field	WELD COUNTY (KERR MCGEE)	Wellbore	WEICHEL 26N-11HZ AWB
Facility	SEC.14-T2N-R65W		

## WELLPATH DATA (201 stations)

MD [ft]	Inclination [°]	Azimuth [°]	TVD [ft]	Vert Sect [ft]	North [ft]	East [ft]	Latitude	Longitude	DLS [°/100ft]	Comments
10479.00	91.390	0.470	6897.99	3994.26	3990.14	192.15	40°08'37.155"N	104°37'20.733"W	0.32	
10570.00	90.520	1.630	6896.48	4085.24	4081.11	193.82	40°08'38.054"N	104°37'20.711"W	1.59	
10662.00	89.290	0.980	6896.63	4177.23	4173.08	195.91	40°08'38.963"N	104°37'20.684"W	1.51	
10754.00	89.290	0.880	6897.77	4269.21	4265.06	197.41	40°08'39.872"N	104°37'20.665"W	0.11	
10847.00	89.410	1.470	6898.82	4362.20	4358.04	199.31	40°08'40.790"N	104°37'20.640"W	0.65	
10938.00	89.630	1.880	6899.59	4453.19	4448.99	201.97	40°08'41.689"N	104°37'20.606"W	0.51	
11030.00	89.480	1.980	6900.30	4545.19	4540.94	205.07	40°08'42.598"N	104°37'20.566"W	0.20	
11122.00	89.290	0.340	6901.29	4637.18	4632.91	206.93	40°08'43.507"N	104°37'20.542"W	1.79	
11214.00	89.540	0.200	6902.23	4729.14	4724.91	207.37	40°08'44.416"N	104°37'20.537"W	0.31	
11306.00	90.120	0.350	6902.50	4821.10	4816.90	207.81	40°08'45.325"N	104°37'20.531"W	0.65	
11398.00	90.460	0.310	6902.03	4913.07	4908.90	208.34	40°08'46.234"N	104°37'20.524"W	0.37	
11490.00	91.320	0.430	6900.60	5005.02	5000.89	208.93	40°08'47.143"N	104°37'20.517"W	0.94	
11582.00	90.340	1.150	6899.27	5097.00	5092.87	210.20	40°08'48.052"N	104°37'20.500"W	1.32	
11674.00	89.110	1.690	6899.71	5188.99	5184.84	212.48	40°08'48.961"N	104°37'20.471"W	1.46	
11766.00	89.070	1.900	6901.17	5280.98	5276.78	215.36	40°08'49.870"N	104°37'20.434"W	0.23	
11858.00	87.750	1.840	6903.73	5372.94	5368.69	218.36	40°08'50.778"N	104°37'20.395"W	1.44	
11949.00	87.910	2.100	6907.17	5463.88	5459.57	221.49	40°08'51.676"N	104°37'20.355"W	0.34	
12035.00	88.030	1.670	6910.22	5549.82	5545.47	224.32	40°08'52.525"N	104°37'20.318"W	0.52	
12120.00	88.420	1.190	6912.85	5634.78	5630.40	226.44	40°08'53.364"N	104°37'20.291"W	0.73	
12205.00	89.560	1.050	6914.35	5719.76	5715.37	228.10	40°08'54.204"N	104°37'20.270"W	1.35	
12290.00	89.840	1.120	6914.80	5804.75	5800.36	229.71	40°08'55.044"N	104°37'20.249"W	0.34	
12375.00	89.960	1.440	6914.94	5889.74	5885.34	231.60	40°08'55.883"N	104°37'20.224"W	0.40	
12461.00	89.930	1.550	6915.03	5975.74	5971.31	233.85	40°08'56.733"N	104°37'20.196"W	0.13	
12546.00	90.360	1.810	6914.81	6060.74	6056.27	236.34	40°08'57.573"N	104°37'20.163"W	0.59	
12631.00	90.460	1.910	6914.20	6145.74	6141.22	239.10	40°08'58.412"N	104°37'20.128"W	0.17	
12716.00	90.710	2.050	6913.34	6230.73	6226.17	242.04	40°08'59.251"N	104°37'20.090"W	0.34	
12802.00	90.890	2.250	6912.13	6316.73	6312.10	245.26	40°09'00.101"N	104°37'20.049"W	0.31	
12887.00	91.230	2.070	6910.56	6401.71	6397.02	248.47	40°09'00.940"N	104°37'20.007"W	0.45	
12972.00	90.060	1.040	6909.61	6486.70	6481.98	250.77	40°09'01.779"N	104°37'19.978"W	1.83	
13057.00	90.650	1.060	6909.08	6571.69	6566.97	252.33	40°09'02.619"N	104°37'19.958"W	0.69	
13143.00	91.230	1.180	6907.67	6657.67	6652.94	254.01	40°09'03.469"N	104°37'19.936"W	0.69	
13228.00	91.080	1.030	6905.95	6742.65	6737.91	255.65	40°09'04.309"N	104°37'19.915"W	0.25	
13313.00	90.960	0.920	6904.44	6827.62	6822.88	257.09	40°09'05.148"N	104°37'19.896"W	0.19	
13399.00	90.590	1.050	6903.28	6913.61	6908.86	258.57	40°09'05.998"N	104°37'19.877"W	0.46	
13484.00	90.590	0.580	6902.40	6998.59	6993.85	259.78	40°09'06.838"N	104°37'19.861"W	0.55	
13569.00	91.230	1.140	6901.05	7083.56	7078.83	261.06	40°09'07.678"N	104°37'19.845"W	1.00	
13654.00	90.960	0.790	6899.43	7168.54	7163.80	262.49	40°09'08.517"N	104°37'19.827"W	0.52	
13740.00	91.390	1.110	6897.67	7254.51	7249.77	263.91	40°09'09.367"N	104°37'19.808"W	0.62	
13825.00	89.140	0.260	6897.27	7339.48	7334.75	264.93	40°09'10.207"N	104°37'19.795"W	2.83	
13910.00	89.010	359.980	6898.64	7424.43	7419.74	265.11	40°09'11.046"N	104°37'19.793"W	0.36	
13995.00	89.350	0.300	6899.86	7509.39	7504.73	265.32	40°09'11.886"N	104°37'19.790"W	0.55	
14080.00	89.630	0.460	6900.62	7594.36	7589.73	265.88	40°09'12.726"N	104°37'19.783"W	0.38	
14165.00	89.600	0.750	6901.19	7679.33	7674.72	266.78	40°09'13.566"N	104°37'19.771"W	0.34	
14251.00	90.400	1.080	6901.19	7765.32	7760.71	268.15	40°09'14.416"N	104°37'19.754"W	1.01	
14336.00	90.830	0.940	6900.28	7850.31	7845.69	269.65	40°09'15.256"N	104°37'19.734"W	0.53	



# Actual Wellpath Report

WEICHEL 26N-11HZ AWP

Page 6 of 8



## REFERENCE WELLPATH IDENTIFICATION

Operator	KERR-MCGEE OIL & GAS ONSHORE LP	Slot	SLOT#27 WEICHEL 26N-11HZ (526'FSL & 422'FEL, SEC.14)
Area	COLORADO	Well	WEICHEL 26N-11HZ
Field	WELD COUNTY (KERR MCGEE)	Wellbore	WEICHEL 26N-11HZ AWB
Facility	SEC.14-T2N-R65W		

## WELLPATH DATA (201 stations)

MD [ft]	Inclination [°]	Azimuth [°]	TVD [ft]	Vert Sect [ft]	North [ft]	East [ft]	Latitude	Longitude	DLS [°/100ft]	Comments
14421.00	90.960	1.190	6898.95	7935.29	7930.67	271.23	40°09'16.095"N	104°37'19.714"W	0.33	
14507.00	91.390	1.420	6897.18	8021.27	8016.63	273.19	40°09'16.945"N	104°37'19.689"W	0.57	
14592.00	91.480	1.550	6895.06	8106.24	8101.57	275.39	40°09'17.784"N	104°37'19.660"W	0.19	
14677.00	90.340	1.350	6893.71	8191.22	8186.53	277.54	40°09'18.624"N	104°37'19.633"W	1.36	
14762.00	90.490	1.530	6893.09	8276.22	8271.50	279.68	40°09'19.464"N	104°37'19.605"W	0.28	
14848.00	90.400	1.610	6892.42	8362.22	8357.47	282.03	40°09'20.313"N	104°37'19.575"W	0.14	
14933.00	89.170	0.550	6892.74	8447.20	8442.45	283.63	40°09'21.153"N	104°37'19.554"W	1.91	
15018.00	88.980	0.470	6894.11	8532.17	8527.43	284.39	40°09'21.993"N	104°37'19.544"W	0.24	
15104.00	88.950	0.730	6895.67	8618.14	8613.41	285.29	40°09'22.842"N	104°37'19.533"W	0.30	
15189.00	89.080	0.800	6897.13	8703.11	8698.39	286.43	40°09'23.682"N	104°37'19.518"W	0.17	
15274.00	90.250	1.060	6897.63	8788.09	8783.38	287.80	40°09'24.522"N	104°37'19.500"W	1.41	
15359.00	90.490	1.010	6897.08	8873.08	8868.36	289.34	40°09'25.362"N	104°37'19.481"W	0.29	
15445.00	90.860	1.370	6896.06	8959.07	8954.34	291.13	40°09'26.211"N	104°37'19.458"W	0.60	
15530.00	90.740	1.230	6894.88	9044.06	9039.31	293.05	40°09'27.051"N	104°37'19.433"W	0.22	
15615.00	90.960	1.450	6893.62	9129.05	9124.28	295.04	40°09'27.891"N	104°37'19.407"W	0.37	
15700.00	91.170	1.760	6892.04	9214.03	9209.23	297.42	40°09'28.730"N	104°37'19.376"W	0.44	
15786.00	91.290	1.610	6890.19	9300.01	9295.17	299.95	40°09'29.580"N	104°37'19.344"W	0.22	
15871.00	91.340	1.770	6888.24	9384.99	9380.11	302.46	40°09'30.419"N	104°37'19.312"W	0.20	
15956.00	91.510	1.800	6886.13	9469.96	9465.04	305.10	40°09'31.258"N	104°37'19.277"W	0.20	
16029.00	91.480	2.120	6884.22	9542.94	9537.98	307.60	40°09'31.979"N	104°37'19.245"W	0.44	Last BHI MWD Survey
16099.00	91.480	2.120	6882.41	9612.91	9607.91	310.19	40°09'32.670"N	104°37'19.212"W	0.00	Projection to Bit

## HOLE & CASING SECTIONS - Ref Wellbore: WEICHEL 26N-11HZ AWB Ref Wellpath: WEICHEL 26N-11HZ AWP

String/Diameter	Start MD [ft]	End MD [ft]	Interval [ft]	Start TVD [ft]	End TVD [ft]	Start N/S [ft]	Start E/W [ft]	End N/S [ft]	End E/W [ft]
12.25in Open Hole	16.00	921.00	905.00	16.00	921.00	0.00	0.00	1.83	-0.05
9.625in Casing Surface	16.00	921.00	905.00	16.00	921.00	0.00	0.00	1.83	-0.05
8.75in Open Hole	921.00	7252.00	6331.00	921.00	6898.16	1.83	-0.05	763.99	152.69
7in Casing Intermediate	16.00	7242.00	7226.00	16.00	6897.90	0.00	0.00	754.01	152.23
6.125in Open Hole	7252.00	16099.00	8847.00	6898.16	6882.41	763.99	152.69	9607.91	310.19





# Actual Wellpath Report

WEICHEL 26N-11HZ AWP

Page 7 of 8



## REFERENCE WELLPATH IDENTIFICATION

Operator	KERR-MCGEE OIL & GAS ONSHORE LP	Slot	SLOT#27 WEICHEL 26N-11HZ (526'FSL & 422'FEL, SEC.14)
Area	COLORADO	Well	WEICHEL 26N-11HZ
Field	WELD COUNTY (KERR MCGEE)	Wellbore	WEICHEL 26N-11HZ AWB
Facility	SEC.14-T2N-R65W		

## TARGETS

Name	MD [ft]	TVD [ft]	North [ft]	East [ft]	Grid East [US ft]	Grid North [US ft]	Latitude	Longitude	Shape
WEICHEL 3 PAD SECTION 11 LINES		0.00	-0.04	0.02	3245181.02	1292398.97	40°07'57.724"N	104°37'23.207"W	polygon
WEICHEL 3 PAD SECTION 14 LINES		0.00	-0.04	0.02	3245181.02	1292398.97	40°07'57.724"N	104°37'23.207"W	polygon
WEICHEL 3 PAD SECTION 23 LINES		0.00	-0.04	0.02	3245181.02	1292398.97	40°07'57.724"N	104°37'23.207"W	polygon
WEICHEL 26N-11HZ BHL (460'FNL & 201'FEL, SEC.11) REV-2		6897.00	9632.69	303.59	3245389.31	1302033.82	40°09'32.915"N	104°37'19.297"W	point
WEICHEL 26N-11HZ BHL ON PLAT (460'FNL & 151'FEL, SEC.11) REV-1		6897.00	9632.69	353.58	3245439.31	1302034.32	40°09'32.915"N	104°37'18.653"W	point
WEICHEL 3 PAD HARDLINES (460' SETBACKS)		7200.00	-0.04	0.02	3245181.02	1292398.97	40°07'57.724"N	104°37'23.207"W	polygon
WEICHEL 3 PAD SEC.23 HARDLINES (460' SETBACKS)		7200.00	-0.04	0.02	3245181.02	1292398.97	40°07'57.724"N	104°37'23.207"W	polygon

## WELLPATH COMPOSITION - Ref Wellbore: WEICHEL 26N-11HZ AWB Ref Wellpath: WEICHEL 26N-11HZ AWP

Start MD [ft]	End MD [ft]	Positional Uncertainty Model	Log Name/Comment	Wellbore
16.00	886.00	Generic gyro - continuous (Standard)	GYRODATA SURVEYS <116-886>	WEICHEL 26N-11HZ AWB
886.00	7195.00	NaviTrak (IFR)	BHI MWD SURVEYS 8 3/4" HOLE <980-7195>	WEICHEL 26N-11HZ AWB
7195.00	16029.00	OnTrak (Standard)	BHI MWD SURVEYS 6 1/8" HOLE <7280-16029>	WEICHEL 26N-11HZ AWB
16029.00	16099.00	Blind Drilling (std)	Projection to bit	WEICHEL 26N-11HZ AWB





# Actual Wellpath Report

WEICHEL 26N-11HZ AWP

Page 8 of 8



## REFERENCE WELLPATH IDENTIFICATION

Operator	KERR-MCGEE OIL & GAS ONSHORE LP	Slot	SLOT#27 WEICHEL 26N-11HZ (526'FSL & 422'FEL, SEC.14)
Area	COLORADO	Well	WEICHEL 26N-11HZ
Field	WELD COUNTY (KERR MCGEE)	Wellbore	WEICHEL 26N-11HZ AWB
Facility	SEC.14-T2N-R65W		

## WELLPATH COMMENTS

MD [ft]	Inclination [°]	Azimuth [°]	TVD [ft]	Comment
16.00	0.000	279.570	16.00	Tie-On
116.00	0.030	279.570	116.00	Begin GYRO Surveys
886.00	0.100	13.950	886.00	Tie-Into GYRO Surveys
980.00	0.240	354.630	980.00	Begin BHI MWD Surveys
7242.00	88.205	2.556	6897.90	7" Casing Point
16029.00	91.480	2.120	6884.22	Last BHI MWD Survey
16099.00	91.480	2.120	6882.41	Projection to Bit