



October 3, 2012

Mr. John Axelson
Northeast Region Environmental Protection Specialist
Colorado Oil and Gas Conservation Commission
1120 Lincoln Street, Suite 801
Denver, Colorado 80203

**RE: No Further Action Request
Beren Corporation
Louder 2-X Pit Complex
API: 05-121-09042
NOAV #200350687
SWSE Sec. 7 T4S R53W, 6th Principal Meridian
Washington County, Colorado**

Dear Mr. Axelson:

LT Environmental, Inc. (LTE), under the direction of Beren Corporation (Beren), conducted environmental remediation and sampling activities following the identification of petroleum hydrocarbon impacted soil at the Louder 2-X Pit Complex (Site). The Site is located 0.7 miles east of the intersection of County Road (CR) U and CR 10 in Washington County, Colorado (Figure 1).

LTE submitted a Site Assessment Workplan that detailed oil skim pit closure activities at the Site on June 11, 2012. The workplan was approved by the COGCC on August 7, 2012 (Remediation #7094). The following summarizes the results of the activities conducted during the oil skim pit closure.

On August 14, 2012, following excavation conducted by Beren contractors, LTE personnel collected composite soil samples from the oil skim pit (OS-01) and two on site impacted soil stock piles (SP-01 & SP-02). Samples were submitted to Summit Scientific of Golden, Colorado, for analysis of pH, specific conductance (EC), sodium adsorption ratio (SAR), benzene, toluene, ethylbenzene, and total xylenes (BTEX), and total petroleum hydrocarbons (TPH) as gasoline range organics (GRO) by United States Environmental Protection Agency (EPA) Method 8260B, and TPH as diesel range organics (DRO) by United States Environmental Protection Agency (EPA) Modified Method 8015.

Soil analytical results indicated all three samples exceeded the Colorado Oil and Gas Conservation Commission (COGCC) Table 910-1 standard for TPH of 500 milligrams per kilogram (mg/kg). Soil samples OS-01, SP-01, and SP-02 exhibited TPH-DRO concentrations of 1,100 mg/kg, 890 mg/kg and 1,700 mg/kg, respectively. The soil analytical results are summarized in Table 1. The laboratory analytical reports are attached.



Because both stockpile samples (SP-01 and SP-02) exceeded the COGCC Table 910-1 TPH standard, Beren decided to haul the stockpiles to the landfill for disposal. Beren contractors transported 430 cubic yards of impacted soil to the Buffalo Ridge Landfill in Keenesburg, Colorado. A haul ticket summary for the soil disposal has been included with this letter as an attachment.

Due to the exceedance of the COGCC Table 910-1 TPH standard in oil skim pit bottom (OS-01), additional excavation was conducted to remove the impacted soil. On September 11, 2012, LTE personnel were on site to oversee excavation activities, field screen soil, document site activities, conduct health and safety monitoring, and collect confirmation samples for laboratory analysis. Composite soil samples were collected from the excavation and were field screened for volatile organic compounds and TPH with a photo-ionization detector and a PetroFLAG TPH screening kit to evaluate if additional excavation was required. Once field screening indicated all the impacted soil had been removed from the oil skim pit, confirmation sample OS-01 was collected again and submitted to an analytical laboratory. Confirmation sample OS-01 consisted of a four point composite sample collected from the skim pit bottom (Figure 2).

Following the additional excavation, 200 cubic yards of soil was stockpiled adjacent to the pit. As depicted on Figure 2, LTE collected a three point composite sample (SP-01) from the new soil stock pile. The samples were collected from below the soil surface and submitted to an analytical laboratory to evaluate the final disposition options for the stockpile on September 12, 2012.

Sample OS-01 was submitted to Summit Scientific of Golden, Colorado, for analysis of TPH-DRO by EPA Modified Method 8015 as this was the only analyte that previously exceeded the COGCC Table 910-1 standard. Sample SP-01 was analyzed for TPH-DRO by EPA Modified Method 8015 and BTEX and TPH-GRO by EPA Method 8260B. Soil analytical results indicated both samples were in compliance with the COGCC Table 910-1 standards. The soil analytical results are summarized in Table 1. The laboratory analytical reports are attached.

Following the excavation activities conducted at the Site, impacted soil exceeding COGCC Table 910-1 standards has been removed from the Site. Beren contractors intend to backfill the oil skim pit to grade. The soil stockpile characterized by sample SP-01 (Figure 2) will be used as a small portion of the backfill material after exhibiting hydrocarbon concentrations compliant with COGCC Table 910-1. The pit will be backfilled to grade and a new berm constructed for the continued use of the produced water pits. Reclamation of the oil skim pit area will be conducted upon completion of backfilling activities. The area will be re-seeded with a native mix as necessary to prevent blow-sand conditions. The replacement oil skim tank is already installed and operating at the facility.

As COGCC cleanup standards have been achieved for the pit closure activities, Beren is requesting a no further action determination in regards to the oil skim pit closure.



Please call LTE at 303-433-9788 if you have any questions or comments regarding this report.

Sincerely,

LT ENVIRONMENTAL, INC.

A handwritten signature in black ink, appearing to read "Michael Wicker".

Michael Wicker
Staff Geologist

A handwritten signature in black ink, appearing to read "Brian Dodek".

Brian Dodek, P.G.
Client Manager/Senior Geologist

Attachments

Figure 1	Site Location
Figure 2	Site Map
Table 1	Soil Analytical Results
Attachment 1	Laboratory Analytical Reports
Attachment 2	Haul Ticket Summary

FIGURE



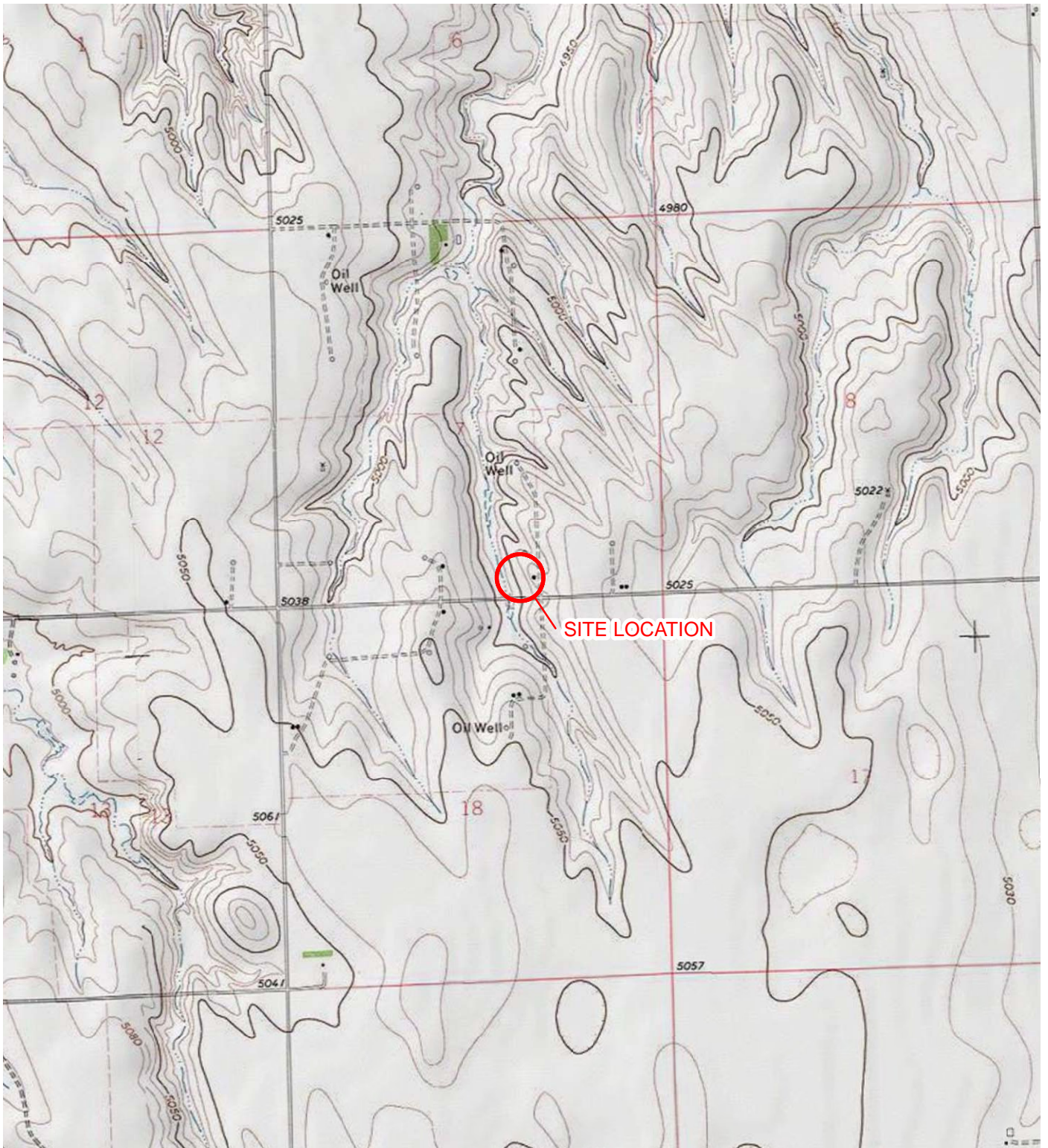


IMAGE COURTESY OF USGS/ESRI

LEGEND

○ SITE LOCATION

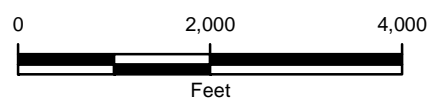


FIGURE 1
SITE LOCATION MAP
LOUDDER 2-X OIL SKIM PIT CLOSURE
WASHINGTON COUNTY, COLORADO

BEREN CORPORATION





LEGEND

- SOIL SAMPLE
- EXCAVATION EXTENT
- SOIL STOCKPILE

IMAGE COURTESY OF ESRI/BING MAPS

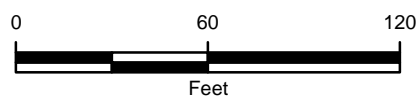


FIGURE 2
SITE MAP
LOUDDER 2-X OIL SKIM PIT CLOSURE
WASHINGTON COUNTY, COLORADO

BEREN CORPORATION



TABLE



TABLE 1
SOIL ANALYTICAL RESULTS
LOUDDER 2-X PIT COMPLEX
WASHINGTON COUNTY, COLORADO
BEREN CORPORATION

Parameter	COGCC Standard	Units	OS-01	OS-01	SP-01	SP-02	SP-01 (New Stockpile)
Sample Date			8/14/2012	9/11/2012	8/14/2012	8/14/2012	9/12/2012
Sample Type			Pit Bottom	Pit Bottom	Stockpile	Stockpile	Stockpile
Benzene	0.17	mg/kg	<0.0050		<0.0050	<0.0050	<0.0050
Toluene	85	mg/kg	<0.0050		<0.0050	<0.0050	<0.0050
Ethylbenzene	100	mg/kg	<0.0050		<0.0050	<0.0050	<0.0050
Total Xylenes	175	mg/kg	<0.0050		<0.0050	<0.0050	<0.0050
TPH-GRO			<0.50		1.8	<0.50	<0.50
TPH-DRO			1,100	<50	890	1,700	<50
Total TPH	500	mg/kg	1,100	<50	891.8	1,700	<50
EC	4	mmhos/cm	0.856				
SAR	12		3.76				
pH	6-9	SU	8.8				

Notes:

COGCC - Colorado Oil and Gas Conservation Commission

TPH-GRO - Total Petroleum Hydrocarbons - Gasoline Range Organics

TPH-DRO - Total Petroleum Hydrocarbons - Diesel Range Organics

Total TPH - Sum of TPH-GRO + TPH-DRO

EC - Specific conductance

SAR - Sodium Absorption Ratio

mg/kg - milligrams pers kilograms

mmhos/cm - millimhos per centimeter

< - less than the stated laboratory method reporting limit

Bold - result equals or exceeds the COGCC Table 910-1 standard

COGCC standards taken from COGCC Table 910-1



ATTACHMENT 1
LABORATORY ANALYTICAL REPORTS



Summit Scientific

741 Corporate Circle – Suite I ♦ Golden, Colorado 80401

303.277.9310 - laboratory ♦ 303.277.9531 - fax

August 17, 2012

Brian Dodek

LT Environmental, Inc.

4600 West 60th Avenue

Arvada, CO 80003

RE: BNC - Loudder 2-X Pit Complex

Enclosed are the results of analyses for samples received by Summit Scientific on 08/15/12 10:30. If you have any questions concerning this report, please feel free to contact me.

Sincerely,

A handwritten signature in black ink, appearing to read "Joe Egry".

Joe Egry For Ben Shrewsbury
President / Laboratory Director



LT Environmental, Inc.
4600 West 60th Avenue
Arvada CO, 80003

Project: BNC - Loudder 2-X Pit Complex

Project Number: 0415-12001
Project Manager: Brian Dodek

Reported:
08/17/12 10:57

ANALYTICAL REPORT FOR SAMPLES

Sample ID	Laboratory ID	Matrix	Date Sampled	Date Received
SP-02	R208085-01	Soil	08/14/12 12:05	08/15/12 10:30
SP-01	R208085-02	Soil	08/14/12 12:10	08/15/12 10:30
OS-01	R208085-03	Soil	08/14/12 12:15	08/15/12 10:30

Summit Scientific

The results in this report apply to the samples analyzed in accordance with the chain of custody document. This analytical report must be reproduced in its entirety.



LT Environmental, Inc.
4600 West 60th Avenue
Arvada CO, 80003

Project: BNC - Loudder 2-X Pit Complex

Project Number: 0415-12001
Project Manager: Brian Dodek

Reported:
08/17/12 10:57

R208085

Summit Scientific

741 Corporate Circle Suite 1 • Golden, Colorado 80401
303-277-9310 • 303-277-9531 Fax

Client: LT Environmental, Inc.
Address: 4600 West 60th Avenue
City/State/Zip: Arvada, CO 80003
Phone: (303) 433-9788
Fax: (303) 433-1432
Project Name: Loudder 2-X
Project Number: 041512001
Project Manager: Brian Dodek
E-Mail: bodek@ltenv.com
Sampler Name: Mike Linker

Page 1 of 1

Sample Description	Date Sampled	Time Sampled	Number of Containers	Preservative				Matrix				Analyze For:				Special Instructions	Notes		
				HCl	HNO ₃	None	Other (Specify)	Groundwater	Soil	Air - Canister Serial #	Other (Specify)	DRO	GBTEX	BTEX	pH / EC			SAR	Table 910.1 metals
SP-02	8/14/12	12:05	2			X				X							GBTEX DRO		
SP-01	8/14/12	12:10	2			X				X							24 hr TAT		
OS-01	8/14/12	12:15	2			X				X							Hold Ec, pH, SAR		
																	Penetration fluid		
																	results (SP, pH, and SAR only)		
																	OS-01 Ec, pH, SAR		
																	Standard TAT		
Requisitioned by: Brian Dodek	Date/Time: 8-15-12	Received by: [Signature]	Date/Time: 8/15/12 10:57	Turn Around Time (Check):				Sample Integrity:				Temperature Upon Receipt:				Intact: Yes / No			
				72 Hours				54 hours				5.7							
				24 Hours															
				48 Hours															

www.SScientific.com

[Signature]



LT Environmental, Inc.
4600 West 60th Avenue
Arvada CO, 80003

Project: BNC - Loudder 2-X Pit Complex

Project Number: 0415-12001
Project Manager: Brian Dodek

Reported:
08/17/12 10:57

SP-02
R208085-01 (Soil)

Summit Scientific

Extractable Petroleum Hydrocarbons by 8015

Date Sampled: **08/14/12 12:05**

Analyte	Result	Reporting Limit	Units	Dilution	Batch	Prepared	Analyzed	Method	Notes
C10-C28 (DRO)	1700	50	mg/kg	1	2081502	08/15/12	08/15/12	8015 Full Carbon Chain	

Date Sampled: **08/14/12 12:05**

Analyte	Result	Reporting Limit	Units	Dilution	Batch	Prepared	Analyzed	Method	Notes
Surrogate: <i>o</i> -Terphenyl		102 %	30-150		"	"	"	"	

Volatile Organic Compounds by EPA Method 8260B

Date Sampled: **08/14/12 12:05**

Analyte	Result	Reporting Limit	Units	Dilution	Batch	Prepared	Analyzed	Method	Notes
Benzene	ND	0.0050	mg/kg	1	2081501	"	08/15/12	EPA 8260B	
Toluene	ND	0.0050	"	"	"	"	"	"	
Ethylbenzene	ND	0.0050	"	"	"	"	"	"	
Xylenes (total)	ND	0.0050	"	"	"	"	"	"	
Gasoline Range Hydrocarbons	ND	0.50	"	"	"	"	"	"	

Date Sampled: **08/14/12 12:05**

Analyte	Result	Reporting Limit	Units	Dilution	Batch	Prepared	Analyzed	Method	Notes
Surrogate: 1,2-Dichloroethane-d4		80.4 %	30-150		"	"	"	"	
Surrogate: Toluene-d8		97.4 %	30-150		"	"	"	"	
Surrogate: 4-Bromofluorobenzene		89.1 %	30-150		"	"	"	"	

Summit Scientific

The results in this report apply to the samples analyzed in accordance with the chain of custody document. This analytical report must be reproduced in its entirety.



LT Environmental, Inc.
4600 West 60th Avenue
Arvada CO, 80003

Project: BNC - Loudder 2-X Pit Complex
Project Number: 0415-12001
Project Manager: Brian Dodek

Reported:
08/17/12 10:57

SP-01
R208085-02 (Soil)

Summit Scientific

Extractable Petroleum Hydrocarbons by 8015

Date Sampled: **08/14/12 12:10**

Analyte	Result	Reporting Limit	Units	Dilution	Batch	Prepared	Analyzed	Method	Notes
C10-C28 (DRO)	890	50	mg/kg	1	2081502	08/15/12	08/16/12	8015 Full Carbon Chain	

Date Sampled: **08/14/12 12:10**

Analyte	Result	Reporting Limit	Units	Dilution	Batch	Prepared	Analyzed	Method	Notes
<i>Surrogate: o-Terphenyl</i>		115 %	30-150		"	"	"	"	

Volatile Organic Compounds by EPA Method 8260B

Date Sampled: **08/14/12 12:10**

Analyte	Result	Reporting Limit	Units	Dilution	Batch	Prepared	Analyzed	Method	Notes
Benzene	ND	0.0050	mg/kg	1	2081501	"	08/15/12	EPA 8260B	
Toluene	ND	0.0050	"	"	"	"	"	"	
Ethylbenzene	ND	0.0050	"	"	"	"	"	"	
Xylenes (total)	ND	0.0050	"	"	"	"	"	"	
Gasoline Range Hydrocarbons	1.8	0.50	"	"	"	"	"	"	

Date Sampled: **08/14/12 12:10**

Analyte	Result	Reporting Limit	Units	Dilution	Batch	Prepared	Analyzed	Method	Notes
<i>Surrogate: 1,2-Dichloroethane-d4</i>		75.6 %	30-150		"	"	"	"	
<i>Surrogate: Toluene-d8</i>		94.6 %	30-150		"	"	"	"	
<i>Surrogate: 4-Bromofluorobenzene</i>		89.9 %	30-150		"	"	"	"	

Summit Scientific

The results in this report apply to the samples analyzed in accordance with the chain of custody document. This analytical report must be reproduced in its entirety.



LT Environmental, Inc.
4600 West 60th Avenue
Arvada CO, 80003

Project: BNC - Loudder 2-X Pit Complex
Project Number: 0415-12001
Project Manager: Brian Dodek

Reported:
08/17/12 10:57

OS-01
R208085-03 (Soil)

Summit Scientific

Extractable Petroleum Hydrocarbons by 8015

Date Sampled: **08/14/12 12:15**

Analyte	Result	Reporting Limit	Units	Dilution	Batch	Prepared	Analyzed	Method	Notes
C10-C28 (DRO)	1100	50	mg/kg	1	2081502	08/15/12	08/16/12	8015 Full Carbon Chain	

Date Sampled: **08/14/12 12:15**

Analyte	Result	Reporting Limit	Units	Dilution	Batch	Prepared	Analyzed	Method	Notes
Surrogate: o-Terphenyl		108 %	30-150		"	"	"	"	

Volatile Organic Compounds by EPA Method 8260B

Date Sampled: **08/14/12 12:15**

Analyte	Result	Reporting Limit	Units	Dilution	Batch	Prepared	Analyzed	Method	Notes
Benzene	ND	0.0050	mg/kg	1	2081501	"	08/15/12	EPA 8260B	
Toluene	ND	0.0050	"	"	"	"	"	"	
Ethylbenzene	ND	0.0050	"	"	"	"	"	"	
Xylenes (total)	ND	0.0050	"	"	"	"	"	"	
Gasoline Range Hydrocarbons	ND	0.50	"	"	"	"	"	"	

Date Sampled: **08/14/12 12:15**

Analyte	Result	Reporting Limit	Units	Dilution	Batch	Prepared	Analyzed	Method	Notes
Surrogate: 1,2-Dichloroethane-d4		71.2 %	30-150		"	"	"	"	
Surrogate: Toluene-d8		92.3 %	30-150		"	"	"	"	
Surrogate: 4-Bromofluorobenzene		104 %	30-150		"	"	"	"	

Physical Parameters by APHA/ASTM/EPA Methods

Date Sampled: **08/14/12 12:15**

Analyte	Result	Reporting Limit	Units	Dilution	Batch	Prepared	Analyzed	Method	Notes
Specific Conductance (EC)	0.856	0.00100	mmhos/cm	1	2081508	08/15/12	08/15/12	SM 2510B	

Summit Scientific

The results in this report apply to the samples analyzed in accordance with the chain of custody document. This analytical report must be reproduced in its entirety.



LT Environmental, Inc.
4600 West 60th Avenue
Arvada CO, 80003

Project: BNC - Loudder 2-X Pit Complex

Project Number: 0415-12001
Project Manager: Brian Dodek

Reported:
08/17/12 10:57

OS-01
R208085-03 (Soil)

Summit Scientific

Physical Parameters by APHA/ASTM/EPA Methods

Date Sampled: **08/14/12 12:15**

Analyte	Result	Reporting Limit	Units	Dilution	Batch	Prepared	Analyzed	Method	Notes
pH	8.8		pH Units	1	2081509	08/15/12	08/15/12	EPA 9045B	

Soluble Nutrients by EPA 6020/Mod. USDA60 6(2, 3A) - Dry Weight Basis

Date Sampled: **08/14/12 12:15**

Analyte	Result	Reporting Limit	Units	Dilution	Batch	Prepared	Analyzed	Method	Notes
Calcium	371	2.50	mg/kg	1	2081510	08/15/12	08/16/12	EPA 6020/Mod. USDA60 6(2, 3A)	
Magnesium	70.2	1.00	"	"	"	"	"	"	
Sodium	301	5.00	"	"	"	"	"	"	

Date Sampled: **08/14/12 12:15**

Analyte	Result	Reporting Limit	Units	Dilution	Batch	Prepared	Analyzed	Method	Notes
Sodium Adsorption Ratio	3.76		units	"	2081609	08/16/12	08/16/12	"	

Summit Scientific

The results in this report apply to the samples analyzed in accordance with the chain of custody document. This analytical report must be reproduced in its entirety.



LT Environmental, Inc.
4600 West 60th Avenue
Arvada CO, 80003

Project: BNC - Loudder 2-X Pit Complex
Project Number: 0415-12001
Project Manager: Brian Dodek

Reported:
08/17/12 10:57

Extractable Petroleum Hydrocarbons by 8015 - Quality Control
Summit Scientific

Analyte	Reporting			Spike	Source	%REC		RPD		
	Result	Limit	Units	Level	Result	%REC	Limits	RPD	Limit	Notes

Batch 2081502 - EPA 3550A

Blank (2081502-BLK1)

Prepared: 08/15/12 Analyzed: 08/16/12

C10-C28 (DRO) ND 50 mg/kg

LCS (2081502-BS1)

Prepared: 08/15/12 Analyzed: 08/16/12

C10-C28 (DRO) 423 50 mg/kg 501 84.4 79.3-126

LCS Dup (2081502-BSD1)

Prepared: 08/15/12 Analyzed: 08/16/12

C10-C28 (DRO) 423 50 mg/kg 501 84.4 79.3-126 0.0402 11

Matrix Spike (2081502-MS1)

Source: R208083-01

Prepared: 08/15/12 Analyzed: 08/16/12

C10-C28 (DRO) 451 50 mg/kg 501 ND 89.9 45.1-150

Matrix Spike Dup (2081502-MSD1)

Source: R208083-01

Prepared: 08/15/12 Analyzed: 08/16/12

C10-C28 (DRO) 445 50 mg/kg 501 ND 88.7 45.1-150 1.32 25

Summit Scientific

The results in this report apply to the samples analyzed in accordance with the chain of custody document. This analytical report must be reproduced in its entirety.



LT Environmental, Inc.
4600 West 60th Avenue
Arvada CO, 80003

Project: BNC - Loudder 2-X Pit Complex
Project Number: 0415-12001
Project Manager: Brian Dodek

Reported:
08/17/12 10:57

Volatile Organic Compounds by EPA Method 8260B - Quality Control
Summit Scientific

Analyte	Reporting			Spike	Source		%REC		RPD	
	Result	Limit	Units	Level	Result	%REC	Limits	RPD	Limit	Notes

Batch 2081501 - EPA 5030 Soil MS

Blank (2081501-BLK1)

Prepared & Analyzed: 08/15/12

Benzene	ND	0.0050	mg/kg							
Toluene	ND	0.0050	"							
Ethylbenzene	ND	0.0050	"							
Xylenes (total)	ND	0.0050	"							
Gasoline Range Hydrocarbons	ND	0.50	"							
Surrogate: 1,2-Dichloroethane-d4	0.0392		"	0.0397	98.8	30-150				
Surrogate: Toluene-d8	0.0402		"	0.0400	100	30-150				
Surrogate: 4-Bromofluorobenzene	0.0405		"	0.0400	101	30-150				

LCS (2081501-BS1)

Prepared & Analyzed: 08/15/12

Benzene	0.153	0.0050	mg/kg	0.150	102	58.1-115				
Toluene	0.154	0.0050	"	0.150	103	56.7-123				
Ethylbenzene	0.160	0.0050	"	0.150	106	61.4-138				
m,p-Xylene	0.314	0.010	"	0.300	105	63.6-128				
o-Xylene	0.154	0.0050	"	0.150	102	62.6-134				
Surrogate: 1,2-Dichloroethane-d4	0.0393		"	0.0397	99.0	30-150				
Surrogate: Toluene-d8	0.0405		"	0.0400	101	30-150				
Surrogate: 4-Bromofluorobenzene	0.0413		"	0.0400	103	30-150				

Matrix Spike (2081501-MS1)

Source: R208083-01

Prepared & Analyzed: 08/15/12

Benzene	0.136	0.0050	mg/kg	0.150	ND	90.5	47.2-120			
Toluene	0.127	0.0050	"	0.150	ND	85.0	47.7-125			
Ethylbenzene	0.121	0.0050	"	0.150	ND	80.8	34.5-150			
m,p-Xylene	0.234	0.010	"	0.300	0.00347	76.9	30-150			
o-Xylene	0.113	0.0050	"	0.150	ND	75.6	30-150			
Surrogate: 1,2-Dichloroethane-d4	0.0423		"	0.0397	106	30-150				
Surrogate: Toluene-d8	0.0401		"	0.0400	100	30-150				
Surrogate: 4-Bromofluorobenzene	0.0417		"	0.0400	104	30-150				

Summit Scientific

The results in this report apply to the samples analyzed in accordance with the chain of custody document. This analytical report must be reproduced in its entirety.



LT Environmental, Inc.
4600 West 60th Avenue
Arvada CO, 80003

Project: BNC - Loudder 2-X Pit Complex
Project Number: 0415-12001
Project Manager: Brian Dodek

Reported:
08/17/12 10:57

Volatile Organic Compounds by EPA Method 8260B - Quality Control
Summit Scientific

Analyte	Reporting			Spike	Source		%REC		RPD	
	Result	Limit	Units	Level	Result	%REC	Limits	RPD	Limit	Notes

Batch 2081501 - EPA 5030 Soil MS

Matrix Spike Dup (2081501-MSD1)		Source: R208083-01			Prepared & Analyzed: 08/15/12					
Benzene	0.134	0.0050	mg/kg	0.149	ND	89.9	47.2-120	1.20	15.1	
Toluene	0.128	0.0050	"	0.149	ND	86.0	47.7-125	0.572	16.8	
Ethylbenzene	0.123	0.0050	"	0.149	ND	82.2	34.5-150	1.07	10.1	
m,p-Xylene	0.237	0.010	"	0.298	0.00347	78.5	30-150	1.35	17.2	
o-Xylene	0.115	0.0050	"	0.149	ND	77.0	30-150	1.13	15.2	
Surrogate: 1,2-Dichloroethane-d4	0.0412		"	0.0395		104	30-150			
Surrogate: Toluene-d8	0.0400		"	0.0398		101	30-150			
Surrogate: 4-Bromofluorobenzene	0.0410		"	0.0398		103	30-150			

Summit Scientific

The results in this report apply to the samples analyzed in accordance with the chain of custody document. This analytical report must be reproduced in its entirety.



LT Environmental, Inc.
4600 West 60th Avenue
Arvada CO, 80003

Project: BNC - Loudder 2-X Pit Complex

Project Number: 0415-12001
Project Manager: Brian Dodek

Reported:
08/17/12 10:57

Physical Parameters by APHA/ASTM/EPA Methods - Quality Control
Summit Scientific

Analyte	Reporting			Spike	Source	%REC		RPD		
	Result	Limit	Units	Level	Result	%REC	Limits	RPD	Limit	Notes

Batch 2081508 - General Preparation

Duplicate (2081508-DUP1)	Source: R208086-04			Prepared & Analyzed: 08/15/12							
Specific Conductance (EC)	1.01	0.00100	mmhos/cm		1.08			6.45		15.5	

Batch 2081509 - General Preparation

Duplicate (2081509-DUP1)	Source: R208086-04			Prepared & Analyzed: 08/15/12							
pH	8.9		pH Units		9.0			0.112		4.95	

Summit Scientific

The results in this report apply to the samples analyzed in accordance with the chain of custody document. This analytical report must be reproduced in its entirety.



LT Environmental, Inc.
4600 West 60th Avenue
Arvada CO, 80003

Project: BNC - Loudder 2-X Pit Complex
Project Number: 0415-12001
Project Manager: Brian Dodek

Reported:
08/17/12 10:57

Soluble Nutrients by EPA 6020/Mod. USDA60 6(2, 3A) - Dry Weight Basis - Quality Control
Summit Scientific

Analyte	Reporting			Spike	Source		%REC		RPD	
	Result	Limit	Units	Level	Result	%REC	Limits	RPD	Limit	Notes

Batch 2081510 - General Preparation

Blank (2081510-BLK1)

Prepared: 08/15/12 Analyzed: 08/16/12

Calcium	ND	2.50	mg/kg
Magnesium	ND	1.00	"
Sodium	ND	5.00	"

LCS (2081510-BS1)

Prepared: 08/15/12 Analyzed: 08/16/12

Calcium	378	2.50	mg/kg	400	94.5	70-130
Magnesium	187	1.00	"	200	93.5	70-130
Sodium	765	5.00	"	800	95.6	70-130

LCS Dup (2081510-BSD1)

Prepared: 08/15/12 Analyzed: 08/16/12

Calcium	388	2.50	mg/kg	400	96.9	70-130	2.57	25
Magnesium	203	1.00	"	200	101	70-130	8.00	25
Sodium	807	5.00	"	800	101	70-130	5.40	25

Matrix Spike (2081510-MS1)

Source: R208085-03

Prepared: 08/15/12 Analyzed: 08/16/12

Calcium	775	2.50	mg/kg	382	371	106	70-130
Magnesium	276	1.00	"	191	70.2	108	70-130
Sodium	1020	5.00	"	764	301	94.7	70-130

Matrix Spike Dup (2081510-MSD1)

Source: R208085-03

Prepared: 08/15/12 Analyzed: 08/16/12

Calcium	729	2.50	mg/kg	381	371	93.9	70-130	6.19	25
Magnesium	253	1.00	"	190	70.2	96.1	70-130	8.57	25
Sodium	947	5.00	"	761	301	84.9	70-130	7.81	25

Summit Scientific

The results in this report apply to the samples analyzed in accordance with the chain of custody document. This analytical report must be reproduced in its entirety.



LT Environmental, Inc.
4600 West 60th Avenue
Arvada CO, 80003

Project: BNC - Loudder 2-X Pit Complex
Project Number: 0415-12001
Project Manager: Brian Dodek

Reported:
08/17/12 10:57

Notes and Definitions

DET Analyte DETECTED
ND Analyte NOT DETECTED at or above the reporting limit
NR Not Reported
dry Sample results reported on a dry weight basis
RPD Relative Percent Difference

A handwritten signature in black ink, appearing to read 'Daniel A. [unclear]'.

Summit Scientific

741 Corporate Circle – Suite I ♦ Golden, Colorado 80401

303.277.9310 - laboratory ♦ 303.277.9531 - fax

October 03, 2012

Brian Dodek

LT Environmental, Inc.

4600 West 60th Avenue

Arvada, CO 80003

RE: BNC - Loudder 2-X Pit Complex

Enclosed are the results of analyses for samples received by Summit Scientific on 09/13/12 17:05. If you have any questions concerning this report, please feel free to contact me.

Sincerely,



Paul Shrewsbury For Ben Shrewsbury
President / Laboratory Manager



LT Environmental, Inc.
4600 West 60th Avenue
Arvada CO, 80003

Project: BNC - Loudder 2-X Pit Complex
Project Number: 0415-12001
Project Manager: Brian Dodek

Reported:
10/03/12 09:14

ANALYTICAL REPORT FOR SAMPLES

Sample ID	Laboratory ID	Matrix	Date Sampled	Date Received
OS-01	R209079-01	Soil	09/11/12 11:00	09/13/12 17:05
SP-01	R209079-02	Soil	09/12/12 15:15	09/13/12 17:05

Summit Scientific

A handwritten signature in black ink, appearing to be 'MSM'.

The results in this report apply to the samples analyzed in accordance with the chain of custody document. This analytical report must be reproduced in its entirety.

LT Environmental, Inc.
4600 West 60th Avenue
Arvada CO, 80003

Project: BNC - Loudder 2-X Pit Complex

Project Number: 0415-12001
Project Manager: Brian Dodek

Reported:
10/03/12 09:14

R209079

Summit Scientific

S₂
741 Corporate Circle Suite 1 ♦ Golden, Colorado 80401
303-277-9310 ♦ 303-277-9531 Fax

Page | of |

Client: LT Environmental, Inc.

Address: 4600 West 60th Avenue

City/State/Zip: Arvada, CO 80003

City/State/Zip: Arvada, CO 80003
Phone: (703) 422-0788

Phone: (505) 433-9188

Sampler Name: Mike Wick

Project Manager:
Brian Dodek

E-Mail: bdodek@env.com

Project Name: 15/11/20

Project Name:	WALL
Project Number:	041612001

Project Number. 041,16001

Preservative						Matrix				Analyze For:	Special Instructions							
Sample Description	Date Sampled	Time Sampled	Number of Containers	HCl	HNO ₃	Zone	Other (Specify)	Groundwater	Soil	Air - Canister Serial #		Other (Specify)	DRO	GBTEX	BTEX	pH / EC	SAR	Table 910.1 metals
DS-01	7/11/12	1100	1		X	X			X			X						
SP-Q1	7/12/12	1515	2X ^{HW}		X	X			X			X						
Requisitioned by: _____ Date/Time: _____				Received by: _____ Date/Time: _____				Turn Around Time (Check) Same Day <input type="checkbox"/> 72 Hours <input type="checkbox"/> Standard <input checked="" type="checkbox"/>				Notes: 						
Requisitioned by: <i>Mujib 7-3-p</i> Date/Time: <i>7/13 17:00</i>				Received by: <i>[Signature]</i> Date/Time: <i>7/13 17:00</i>				Temperature Upon Receipt: <i>45</i>				Sample Integrity Intact: Yes <input checked="" type="checkbox"/> No <input type="checkbox"/>						
Requisitioned by: _____ Date/Time: _____				Received in Lab by: _____ Date/Time: _____														

www.s2scientific.com

Summit Scientific

The results in this report apply to the samples analyzed in accordance with the chain of custody document. This analytical report must be reproduced in its entirety.





LT Environmental, Inc.
4600 West 60th Avenue
Arvada CO, 80003

Project: BNC - Loudder 2-X Pit Complex

Project Number: 0415-12001
Project Manager: Brian Dodek

Reported:
10/03/12 09:14

OS-01
R209079-01 (Soil)

Summit Scientific

Extractable Petroleum Hydrocarbons by 8015

Date Sampled: **09/11/12 11:00**

Analyte	Result	Reporting Limit	Units	Dilution	Batch	Prepared	Analyzed	Method	Notes
C10-C28 (DRO)	ND	50	mg/kg	1	2091503	09/15/12	09/15/12	8015 Full Carbon Chain	

Date Sampled: **09/11/12 11:00**

Analyte	Result	Reporting Limit	Units	Dilution	Batch	Prepared	Analyzed	Method	Notes
Surrogate: o-Terphenyl		76.9 %	30-150		"	"	"	"	

Summit Scientific

The results in this report apply to the samples analyzed in accordance with the chain of custody document. This analytical report must be reproduced in its entirety.



LT Environmental, Inc.
4600 West 60th Avenue
Arvada CO, 80003

Project: BNC - Loudder 2-X Pit Complex

Project Number: 0415-12001
Project Manager: Brian Dodek

Reported:
10/03/12 09:14

SP-01
R209079-02 (Soil)

Summit Scientific

Extractable Petroleum Hydrocarbons by 8015

Date Sampled: **09/12/12 15:15**

Analyte	Result	Reporting Limit	Units	Dilution	Batch	Prepared	Analyzed	Method	Notes
C10-C28 (DRO)	ND	50	mg/kg	1	2091503	09/15/12	09/15/12	8015 Full Carbon Chain	

Date Sampled: **09/12/12 15:15**

Analyte	Result	Reporting Limit	Units	Dilution	Batch	Prepared	Analyzed	Method	Notes
Surrogate: <i>o</i> -Terphenyl		70.8 %	30-150		"	"	"	"	

Volatile Organic Compounds by EPA Method 8260B

Date Sampled: **09/12/12 15:15**

Analyte	Result	Reporting Limit	Units	Dilution	Batch	Prepared	Analyzed	Method	Notes
Benzene	ND	0.0050	mg/kg	1	2091502	09/15/12	09/15/12	EPA 8260B	
Toluene	ND	0.0050	"	"	"	"	"	"	
Ethylbenzene	ND	0.0050	"	"	"	"	"	"	
Xylenes (total)	ND	0.0050	"	"	"	"	"	"	
Gasoline Range Hydrocarbons	ND	0.50	"	"	"	"	"	"	

Date Sampled: **09/12/12 15:15**

Analyte	Result	Reporting Limit	Units	Dilution	Batch	Prepared	Analyzed	Method	Notes
Surrogate: 1,2-Dichloroethane-d4		97.7 %	30-150		"	"	"	"	
Surrogate: Toluene-d8		93.8 %	30-150		"	"	"	"	
Surrogate: 4-Bromofluorobenzene		96.3 %	30-150		"	"	"	"	

Summit Scientific

The results in this report apply to the samples analyzed in accordance with the chain of custody document. This analytical report must be reproduced in its entirety.



LT Environmental, Inc.
4600 West 60th Avenue
Arvada CO, 80003

Project: BNC - Loudder 2-X Pit Complex
Project Number: 0415-12001
Project Manager: Brian Dodek

Reported:
10/03/12 09:14

Extractable Petroleum Hydrocarbons by 8015 - Quality Control
Summit Scientific

Analyte	Reporting			Spike	Source	%REC		RPD		
	Result	Limit	Units	Level	Result	%REC	Limits	RPD	Limit	Notes

Batch 2091503 - EPA 3550A

Blank (2091503-BLK1)

Prepared & Analyzed: 09/15/12

C10-C28 (DRO) ND 50 mg/kg

LCS (2091503-BS1)

Prepared & Analyzed: 09/15/12

C10-C28 (DRO) 438 50 mg/kg 501 87.4 73-134

LCS Dup (2091503-BSD1)

Prepared & Analyzed: 09/15/12

C10-C28 (DRO) 454 50 mg/kg 501 90.5 73-134 3.48 11

Matrix Spike (2091503-MS1)

Source: R209092-01

Prepared & Analyzed: 09/15/12

C10-C28 (DRO) 423 50 mg/kg 484 7.54 86.0 50-148

Matrix Spike Dup (2091503-MSD1)

Source: R209092-01

Prepared & Analyzed: 09/15/12

C10-C28 (DRO) 432 50 mg/kg 497 7.54 85.5 50-148 2.08 13

Summit Scientific

The results in this report apply to the samples analyzed in accordance with the chain of custody document. This analytical report must be reproduced in its entirety.



LT Environmental, Inc.
4600 West 60th Avenue
Arvada CO, 80003

Project: BNC - Loudder 2-X Pit Complex
Project Number: 0415-12001
Project Manager: Brian Dodek

Reported:
10/03/12 09:14

Volatile Organic Compounds by EPA Method 8260B - Quality Control
Summit Scientific

Analyte	Reporting			Spike	Source		%REC		RPD	
	Result	Limit	Units	Level	Result	%REC	Limits	RPD	Limit	Notes

Batch 2091502 - EPA 5030 Soil MS

Blank (2091502-BLK1)

Prepared & Analyzed: 09/15/12

Benzene	ND	0.0050	mg/kg							
Toluene	ND	0.0050	"							
Ethylbenzene	ND	0.0050	"							
Xylenes (total)	ND	0.0050	"							
Gasoline Range Hydrocarbons	ND	0.50	"							
Surrogate: 1,2-Dichloroethane-d4	0.0400		"	0.0397	101	30-150				
Surrogate: Toluene-d8	0.0379		"	0.0400	94.7	30-150				
Surrogate: 4-Bromofluorobenzene	0.0384		"	0.0400	96.1	30-150				

LCS (2091502-BS1)

Prepared & Analyzed: 09/15/12

Benzene	0.0907	0.0050	mg/kg	0.100	90.7	58-130				
Toluene	0.0990	0.0050	"	0.100	99.0	61-134				
Ethylbenzene	0.111	0.0050	"	0.100	111	74-139				
m,p-Xylene	0.223	0.010	"	0.200	111	73-137				
o-Xylene	0.115	0.0050	"	0.100	115	73-141				
Surrogate: 1,2-Dichloroethane-d4	0.0387		"	0.0397	97.6	30-150				
Surrogate: Toluene-d8	0.0388		"	0.0400	97.0	30-150				
Surrogate: 4-Bromofluorobenzene	0.0374		"	0.0400	93.4	30-150				

LCS Dup (2091502-BSD1)

Prepared & Analyzed: 09/15/12

Benzene	0.0922	0.0050	mg/kg	0.100	92.2	58-130	1.61	13		
Toluene	0.0941	0.0050	"	0.100	94.1	61-134	5.03	16		
Ethylbenzene	0.113	0.0050	"	0.100	113	74-139	1.91	12		
m,p-Xylene	0.225	0.010	"	0.200	113	73-137	1.17	14		
o-Xylene	0.115	0.0050	"	0.100	115	73-141	0.183	12		
Surrogate: 1,2-Dichloroethane-d4	0.0378		"	0.0397	95.1	30-150				
Surrogate: Toluene-d8	0.0367		"	0.0400	91.6	30-150				
Surrogate: 4-Bromofluorobenzene	0.0361		"	0.0400	90.2	30-150				

Summit Scientific

The results in this report apply to the samples analyzed in accordance with the chain of custody document. This analytical report must be reproduced in its entirety.



LT Environmental, Inc.
4600 West 60th Avenue
Arvada CO, 80003

Project: BNC - Loudder 2-X Pit Complex
Project Number: 0415-12001
Project Manager: Brian Dodek

Reported:
10/03/12 09:14

Volatile Organic Compounds by EPA Method 8260B - Quality Control
Summit Scientific

Analyte	Reporting			Spike	Source		%REC		RPD	
	Result	Limit	Units	Level	Result	%REC	Limits	RPD	Limit	Notes

Batch 2091502 - EPA 5030 Soil MS

Matrix Spike (2091502-MS1)		Source: R209092-01			Prepared & Analyzed: 09/15/12					
Benzene	0.0919	0.0050	mg/kg	0.100	ND	91.9	30-131			
Toluene	0.0978	0.0050	"	0.100	ND	97.8	30-134			
Ethylbenzene	0.114	0.0050	"	0.100	ND	114	22-153			
m,p-Xylene	0.224	0.010	"	0.200	ND	112	10-159			
o-Xylene	0.114	0.0050	"	0.100	ND	114	31-151			
Surrogate: 1,2-Dichloroethane-d4	0.0396		"	0.0397		99.8	30-150			
Surrogate: Toluene-d8	0.0373		"	0.0400		93.2	30-150			
Surrogate: 4-Bromofluorobenzene	0.0371		"	0.0400		92.7	30-150			
Matrix Spike Dup (2091502-MSD1)		Source: R209092-01			Prepared & Analyzed: 09/15/12					
Benzene	0.0907	0.0050	mg/kg	0.100	ND	90.7	30-131	1.25	34	
Toluene	0.0943	0.0050	"	0.100	ND	94.3	30-134	3.69	30	
Ethylbenzene	0.109	0.0050	"	0.100	ND	109	22-153	4.77	24	
m,p-Xylene	0.219	0.010	"	0.200	ND	110	10-159	2.07	68	
o-Xylene	0.113	0.0050	"	0.100	ND	113	31-151	0.975	38	
Surrogate: 1,2-Dichloroethane-d4	0.0400		"	0.0397		101	30-150			
Surrogate: Toluene-d8	0.0384		"	0.0400		96.1	30-150			
Surrogate: 4-Bromofluorobenzene	0.0374		"	0.0400		93.5	30-150			

Summit Scientific

The results in this report apply to the samples analyzed in accordance with the chain of custody document. This analytical report must be reproduced in its entirety.



LT Environmental, Inc.
4600 West 60th Avenue
Arvada CO, 80003

Project: BNC - Loudder 2-X Pit Complex

Project Number: 0415-12001
Project Manager: Brian Dodek

Reported:
10/03/12 09:14

Notes and Definitions

DET Analyte DETECTED
ND Analyte NOT DETECTED at or above the reporting limit
NR Not Reported
dry Sample results reported on a dry weight basis
RPD Relative Percent Difference

Summit Scientific

The results in this report apply to the samples analyzed in accordance with the chain of custody document. This analytical report must be reproduced in its entirety.

A handwritten signature in black ink, appearing to be 'MSM'.

ATTACHMENT 2
HAUL TICKET SUMMARY



D D Water Service

Excavated Material Hauled From Louder Lease to Buffalo Ridge Landfill

DATE	Number of Loads (18 yds each)	Scale Ticket #	Driver
8/2/2012	1	5540050	Rilly
8/2/2012	1	5540048	Steve
8/2/2012	1	5540060	Terry
8/3/2012	1	5540088	Steve
8/3/2012	1	5540089	Rilly
8/3/2012	1	5540130	Tim
8/10/2012	1	7110356	Tim
8/10/2012	1	7110351	Rilly
9/5/2012	1	5540741	Jim
9/5/2012	1	5540742	Rick
9/5/2012	1	5540772	Jerry
9/5/2012	1	5540815	Jerry
9/5/2012	1	5540782	Jerry
9/5/2012	1	5540771	Terry
9/6/2012	1	5540785	Hallman
9/6/2012	1	5540813	Hallman
9/6/2012	1	5540797	Salcido-RB
9/6/2012	1	5540823	Salcido-RB
9/6/2012	1	5540822	AC
9/6/2012	1	5540792	AC
9/6/2012	1	5540783	Randy
9/6/2012	1	5540817	Randy
9/7/2012	1	5540829	Jerry
9/7/2012	1	5540835	Randy