



Lat40°, Inc. 1635 Foxtrail Drive, Suite 325 Loveland, CO 970-776-3321

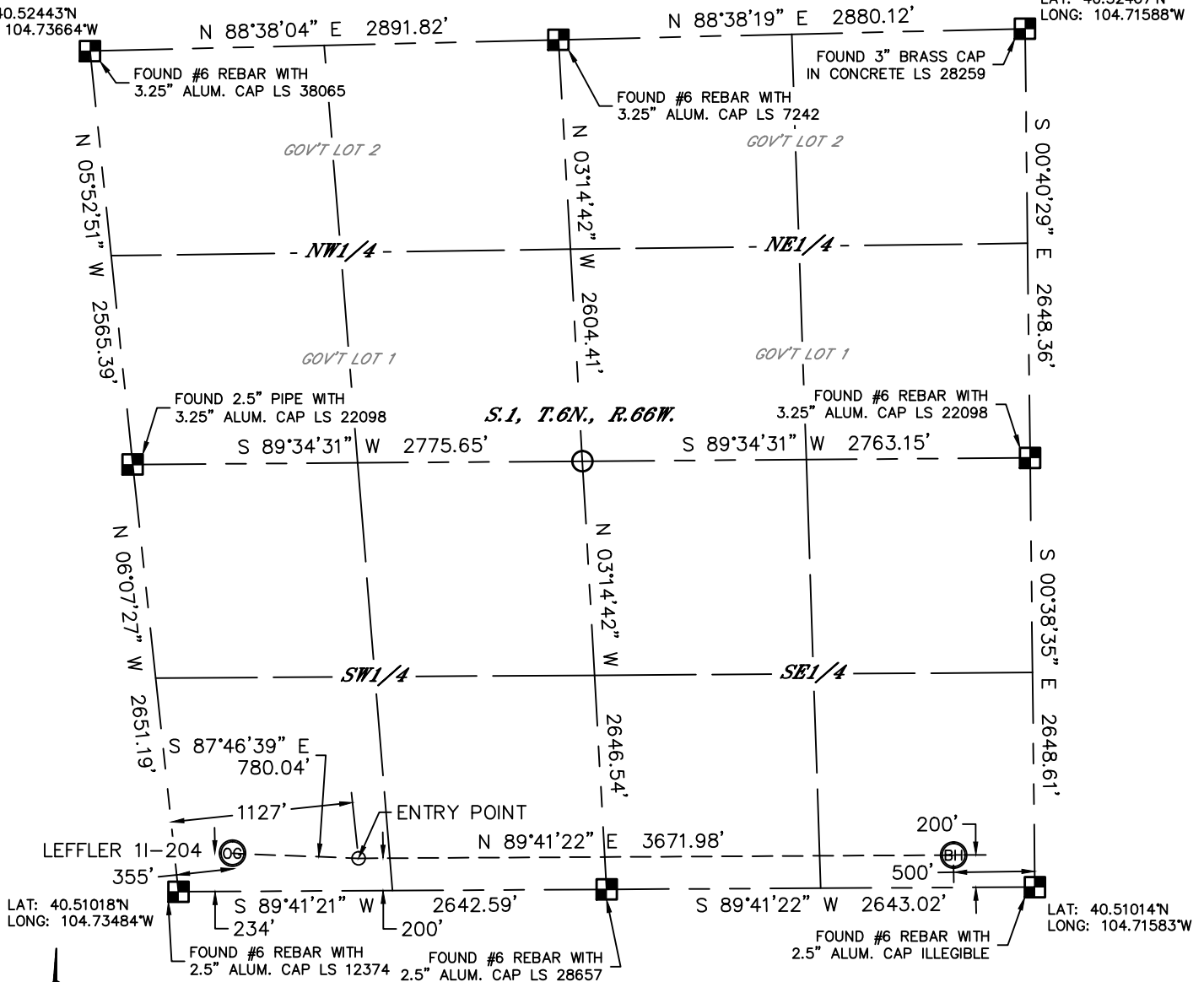
WELL LOCATION CERTIFICATE

THIS MAP DOES NOT REPRESENT A BOUNDARY SURVEY

SECTION: 1
TOWNSHIP: 6N
RANGE: 66W

LAT: 40.52443°N
LONG: 104.73664°W

LAT: 40.52467°N
LONG: 104.71588°W



In accordance with a request from STEVE TRACY with PDC ENERGY Lat40°, Inc. has determined the surface location of the LEFFLER 11-204 to be 234' from the SOUTH line and 355' from the WEST line and the bottom hole to be 200' from the SOUTH line and 500' from the EAST line as measured at right angles from the section lines of Section 1, Township 6 North, Range 66 West of the Sixth Principal Meridian, County of Weld, State of Colorado.

I hereby state that this Well Location Certificate was prepared by me, or under my direct supervision, that the fieldwork was completed on 7/18/2012, for and on behalf of PDC ENERGY. That this is not a Land Survey Plat or an Improvement Survey Plat, and that it is not to be relied upon for establishment of fence, building, or other future improvement lines.

SURFACE LOCATION

LAT: 40.51082°N
LONG: 104.73363°W
PDOP: 2.9
ELEV: 4815'
1/4, 1/4: SW1/4SW1/4
NEAREST PROPERTY LINE: 234' S

ENTRY POINT

LAT: 40.51072°N
LONG: 104.73083°W

BOTTOM HOLE

LAT: 40.51069°N
LONG: 104.71763°W

NOTE:

- 1) Bearings shown are Grid Bearings of the Colorado State Plane Coordinate System, North Zone, North American Datum 1983/2007. The lineal dimensions as contained herein are based upon the "U.S. Survey Foot."
- 2) Ground elevations are based on an observed GPS elevation (NAVD 1988 DATUM).
- 3) IMPROVEMENTS: See LOCATION DRAWING for all visible improvements within 400' of disturbed area.
- 4) SURFACE USE: EXISTING DRILL PAD
- 5) INSTRUMENT OPERATOR: ADAM KELLY

NOTE

According to Colorado law, you must commence any legal action based upon any defect in this W.L.C. within three years after you discover such defect. In no event, may any action based upon any defect in this survey be commenced more than ten years after the date of the certificate shown hereon. (13-80-105 C.R.S.)

LEGEND

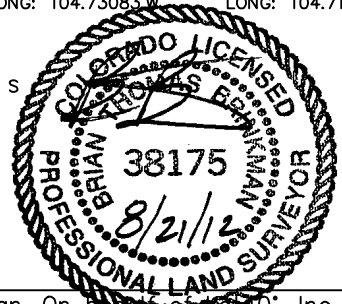


= ALIQUOT MONUMENT AS DESCRIBED



= CALCULATED POSITION

Brian T. Brinkman—On behalf of Lat40°, Inc.
Colorado Licensed Professional
Land Surveyor No. 38175
DATE: rev.8/21/2012
PROJECT#: 2011150



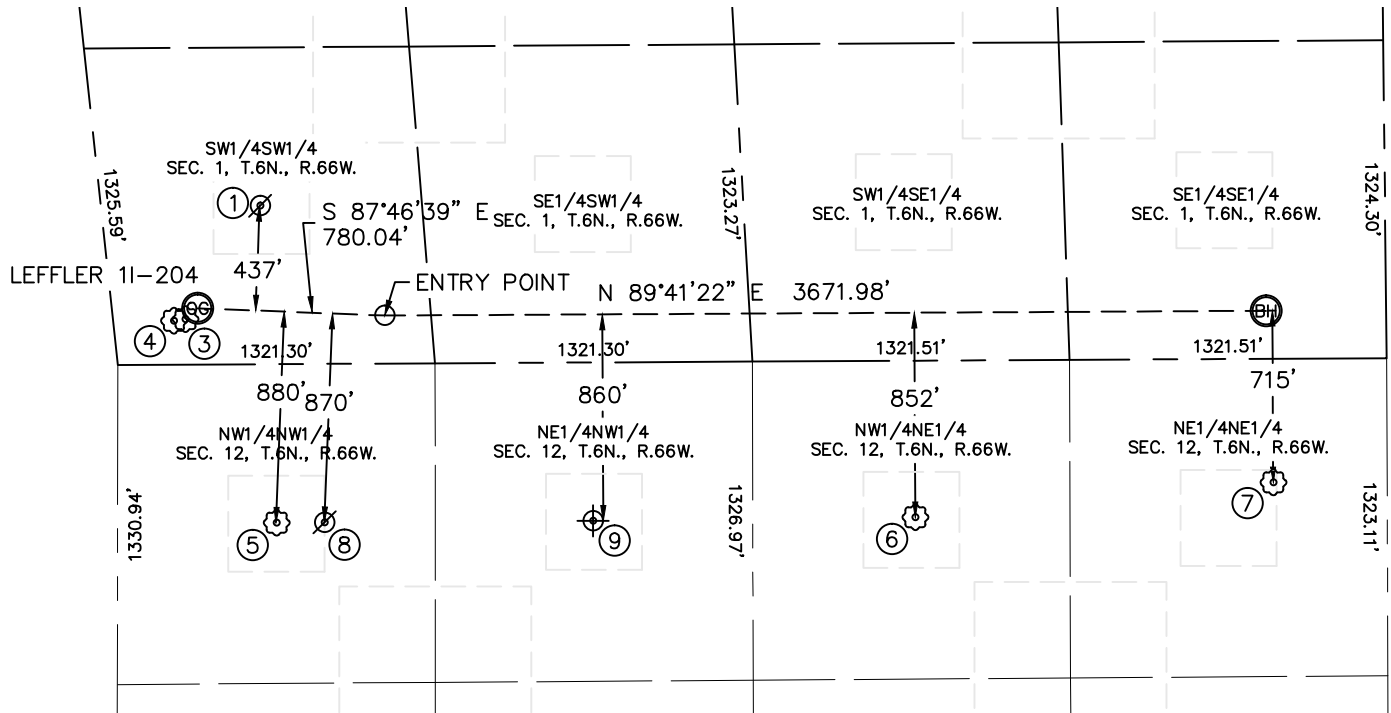


Lat40°, Inc. 1635 Foxtrail Drive, Suite 325 Loveland, CO 970-776-3321

SITE SKETCH

LEFFLER 11-204

SECTION: 1
TOWNSHIP: 6N
RANGE: 66W



①
NIX #14-1
(ABANDONED LOCATION)
SW1/4SW1/4
660' FSL
660' FWL
LAT-40.51195°N (COGCC)
LONG-104.73274°W (COGCC)
PDOP: N/A
ELEV: N/A

③
LEFFLER 24-1H
SW1/4SW1/4
189' FSL
300' FWL
LAT-40.51070°N
LONG-104.73382°W
PDOP: 5.2
ELEV: 4816'

④
LEFFLER 14-1H
SW1/4SW1/4
183' FSL
251' FWL
LAT-40.51068°N
LONG-104.73399°W
PDOP: 1.5
ELEV: 4815'

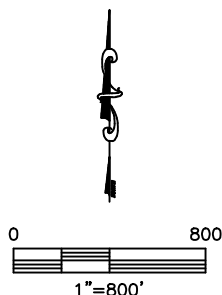
⑤
SOUTHARD I 12-04
NW1/4NW1/4
661' FNL
662' FWL
LAT-40.50836°N
LONG-104.73248°W
PDOP: 2.1
ELEV: 4808'

⑥
EISENACH 1
NW1/4NE1/4
652' FNL
1966' FEL
LAT-40.50836°N
LONG-104.72291°W
PDOP: 2.0
ELEV: 4805'

⑦
EISENACH 12-1G6
NE1/4NE1/4
515' FNL
475' FEL
LAT-40.50873°N
LONG-104.71755°W
PDOP: 2.3
ELEV: 4807'

⑧
SOUTHARD 12-4G6
(ABANDONED LOCATION)
NW1/4NW1/4
660' FNL
862' FWL
LAT-40.50833°N (COGCC)
LONG-104.73180°W (COGCC)
PDOP: N/A
ELEV: N/A

⑨
SOUTHARD 1
(PLUGGED & ABANDONED)
NE1/4NW1/4
660' FNL
1980' FWL
LAT-40.50833°N (COGCC)
LONG-104.72778°W (COGCC)
PDOP: N/A
ELEV: N/A



DATE: rev.8/21/2012
PROJECT#: 2011150