

Well Name: Casa Loma 25-25

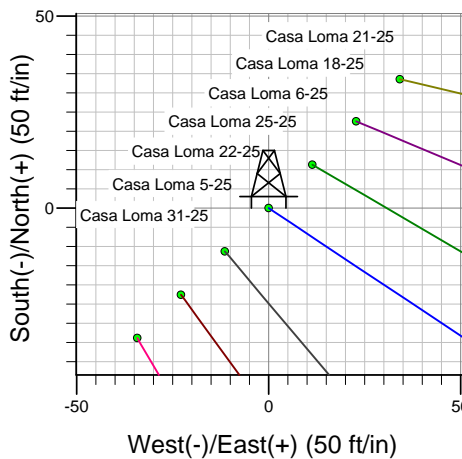
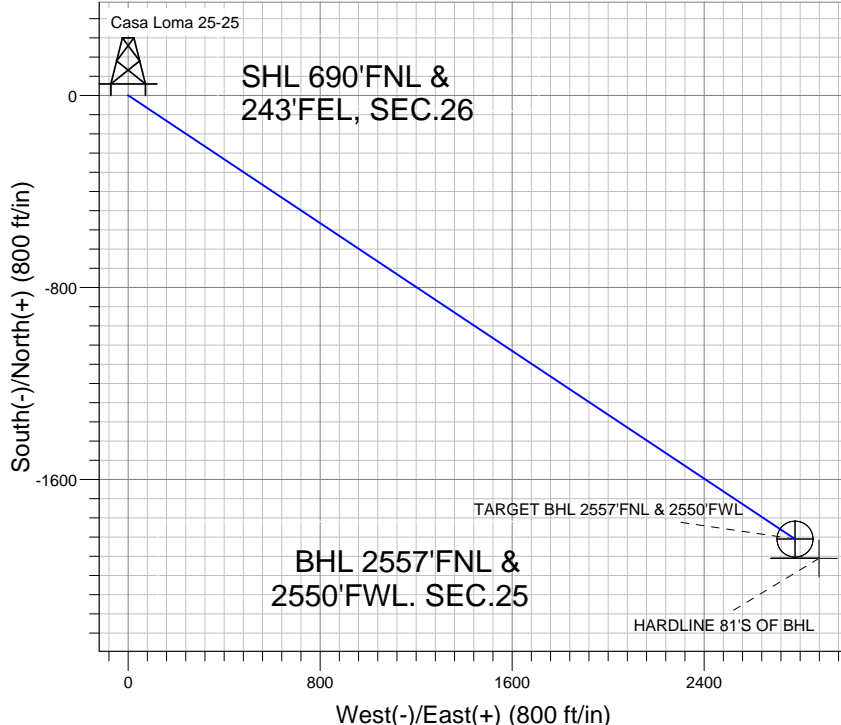
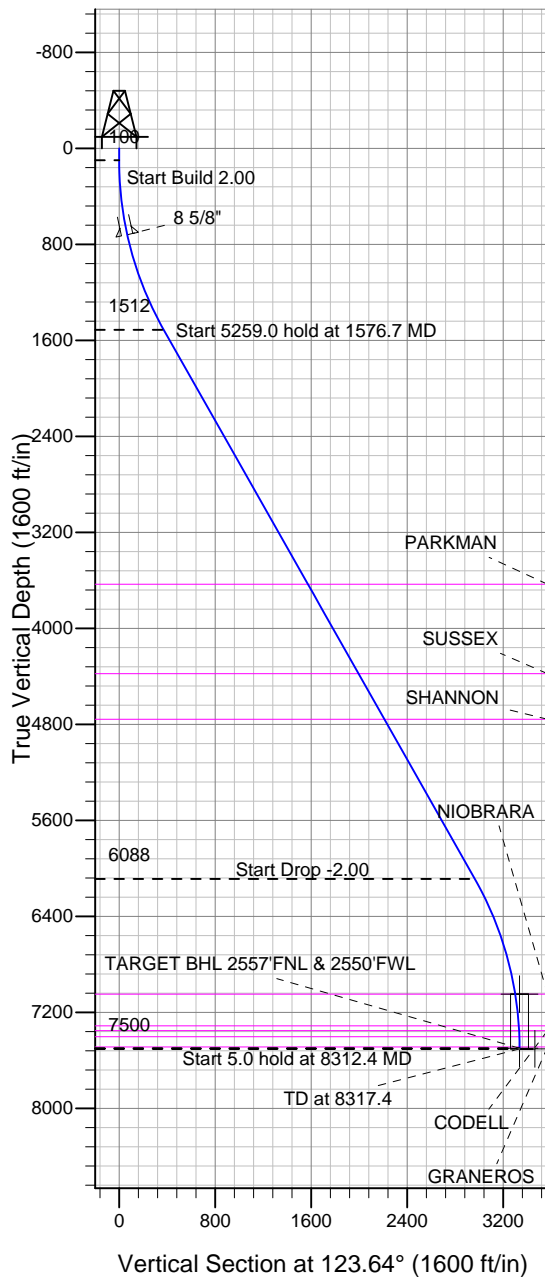
Surface Location: Casa Loma 8 Pad Sec.26-T7N-R67W
North American Datum 1983 , US State Plane 1983 , Colorado Northern Zone

Ground Elevation: 4952.0

+N/-S	+E/-W	Northing	Easting	Latitude	Longitude	Slot
0.0	0.0	1444036.62	3180136.71	40.550473	-104.851769	

Original Well Elev WELL @ 4968.0ft (Original Well Elev)

BAYSWATER EXPLORATION & PRODUCTION



Casa Loma 8 Pad Sec.26-T7N-R67W
Casa Loma 25-25
Plan #1 (7-16-12)
14:19, July 20 2012



Azimuths to True North
Magnetic North: 8.78°
Magnetic Field
Strength: 53085.2snT
Dip Angle: 67.12°
Date: 7/16/2012
Model: IGRF2010

WELLBORE TARGET DETAILS (LAT/LONG)

Name	TVD	+N/-S	+E/-W	Latitude	Longitude	Shape
TARGET CIRCLE 2557'FNL & 2550'FWL	7048.0	-1848.4	2778.1	40.545399	-104.841773	Circle (Radius: 75.0)
TARGET BHL 2557'FNL & 2550'FWL	7500.0	-1848.4	2778.1	40.545399	-104.841773	Point
HARDLINE 81'S OF BHL	7505.0	-1929.4	2878.1	40.545177	-104.841413	Polygon

SECTION DETAILS

Sec	MD	Inc	Azi	TVD	+N/-S	+E/-W	DLeg	TFace	VSec	Target
1	0.0	0.00	0.00	0.0	0.0	0.0	0.00	0.00	0.0	
2	100.0	0.00	0.00	100.0	0.0	0.0	0.00	0.00	0.0	
3	1576.7	29.53	123.64	1512.2	-206.2	309.9	2.00	123.64	372.2	
4	6835.7	29.53	123.64	6087.8	-1642.2	2468.2	0.00	0.00	2964.6	
5	8312.4	0.00	0.00	7500.0	-1848.4	2778.1	2.00	180.00	3336.8	TARGET BHL 2557'FNL & 2550'FWL
6	8317.4	0.00	0.00	7505.0	-1848.4	2778.1	0.00	0.00	3336.8	



BAYSWATER EXPLORATION & PRODUCTION

SEC.26-T7N-R67W

Casa Loma 8 Pad Sec.26-T7N-R67W

Casa Loma 25-25

Wellbore #1

Plan: Plan #1 (7-16-12)

Standard Planning Report

20 July, 2012

Plan Sections										
Measured Depth (ft)	Inclination (°)	Azimuth (°)	Vertical Depth (ft)	+N/-S (ft)	+E/-W (ft)	Dogleg Rate (°/100ft)	Build Rate (°/100ft)	Turn Rate (°/100ft)	TFO (°)	Target
0.0	0.00	0.00	0.0	0.0	0.0	0.00	0.00	0.00	0.00	
100.0	0.00	0.00	100.0	0.0	0.0	0.00	0.00	0.00	0.00	
1,576.7	29.53	123.64	1,512.2	-206.2	309.9	2.00	2.00	0.00	123.64	
6,835.7	29.53	123.64	6,087.8	-1,642.2	2,468.2	0.00	0.00	0.00	0.00	
8,312.4	0.00	0.00	7,500.0	-1,848.4	2,778.1	2.00	-2.00	0.00	180.00	TARGET BHL 2557
8,317.4	0.00	0.00	7,505.0	-1,848.4	2,778.1	0.00	0.00	0.00	0.00	

Database:	Landmark	Local Co-ordinate Reference:	Well Casa Loma 25-25
Company:	BAYSWATER EXPLORATION & PRODUCTION	TVD Reference:	WELL @ 4968.0ft (Original Well Elev)
Project:	SEC.26-T7N-R67W	MD Reference:	WELL @ 4968.0ft (Original Well Elev)
Site:	Casa Loma 8 Pad Sec.26-T7N-R67W	North Reference:	True
Well:	Casa Loma 25-25	Survey Calculation Method:	Minimum Curvature
Wellbore:	Wellbore #1		
Design:	Plan #1 (7-16-12)		

Planned Survey

Measured Depth (ft)	Inclination (°)	Azimuth (°)	Vertical Depth (ft)	+N/-S (ft)	+E/-W (ft)	Vertical Section (ft)	Dogleg Rate (°/100ft)	Build Rate (°/100ft)	Turn Rate (°/100ft)
0.0	0.00	0.00	0.0	0.0	0.0	0.0	0.00	0.00	0.00
40.0	0.00	0.00	40.0	0.0	0.0	0.0	0.00	0.00	0.00
80.0	0.00	0.00	80.0	0.0	0.0	0.0	0.00	0.00	0.00
100.0	0.00	0.00	100.0	0.0	0.0	0.0	0.00	0.00	0.00
120.0	0.40	123.64	120.0	0.0	0.1	0.1	2.00	2.00	0.00
160.0	1.20	123.64	160.0	-0.3	0.5	0.6	2.00	2.00	0.00
200.0	2.00	123.64	200.0	-1.0	1.5	1.7	2.00	2.00	0.00
240.0	2.80	123.64	239.9	-1.9	2.8	3.4	2.00	2.00	0.00
280.0	3.60	123.64	279.9	-3.1	4.7	5.7	2.00	2.00	0.00
320.0	4.40	123.64	319.8	-4.7	7.0	8.4	2.00	2.00	0.00
360.0	5.20	123.64	359.6	-6.5	9.8	11.8	2.00	2.00	0.00
400.0	6.00	123.64	399.5	-8.7	13.1	15.7	2.00	2.00	0.00
440.0	6.80	123.64	439.2	-11.2	16.8	20.2	2.00	2.00	0.00
480.0	7.60	123.64	478.9	-13.9	21.0	25.2	2.00	2.00	0.00
520.0	8.40	123.64	518.5	-17.0	25.6	30.7	2.00	2.00	0.00
560.0	9.20	123.64	558.0	-20.4	30.7	36.9	2.00	2.00	0.00
600.0	10.00	123.64	597.5	-24.1	36.2	43.5	2.00	2.00	0.00
640.0	10.80	123.64	636.8	-28.1	42.2	50.7	2.00	2.00	0.00
680.0	11.60	123.64	676.0	-32.4	48.7	58.5	2.00	2.00	0.00
720.0	12.40	123.64	715.2	-37.0	55.6	66.8	2.00	2.00	0.00
724.9	12.50	123.64	720.0	-37.6	56.5	67.9	2.00	2.00	0.00
8 5/8"									
760.0	13.20	123.64	754.2	-41.9	63.0	75.7	2.00	2.00	0.00
800.0	14.00	123.64	793.1	-47.1	70.8	85.1	2.00	2.00	0.00
840.0	14.80	123.64	831.8	-52.6	79.1	95.0	2.00	2.00	0.00
880.0	15.60	123.64	870.4	-58.5	87.9	105.5	2.00	2.00	0.00
920.0	16.40	123.64	908.8	-64.6	97.0	116.6	2.00	2.00	0.00
960.0	17.20	123.64	947.1	-71.0	106.7	128.1	2.00	2.00	0.00
1,000.0	18.00	123.64	985.3	-77.7	116.7	140.2	2.00	2.00	0.00
1,040.0	18.80	123.64	1,023.2	-84.7	127.2	152.8	2.00	2.00	0.00
1,080.0	19.60	123.64	1,061.0	-91.9	138.2	166.0	2.00	2.00	0.00
1,120.0	20.40	123.64	1,098.6	-99.5	149.6	179.7	2.00	2.00	0.00
1,160.0	21.20	123.64	1,136.0	-107.4	161.4	193.9	2.00	2.00	0.00
1,200.0	22.00	123.64	1,173.2	-115.6	173.7	208.6	2.00	2.00	0.00
1,240.0	22.80	123.64	1,210.2	-124.0	186.4	223.8	2.00	2.00	0.00
1,280.0	23.60	123.64	1,246.9	-132.7	199.5	239.6	2.00	2.00	0.00
1,320.0	24.40	123.64	1,283.5	-141.7	213.0	255.9	2.00	2.00	0.00
1,360.0	25.20	123.64	1,319.8	-151.0	227.0	272.6	2.00	2.00	0.00
1,400.0	26.00	123.64	1,355.8	-160.6	241.4	289.9	2.00	2.00	0.00
1,440.0	26.80	123.64	1,391.7	-170.5	256.2	307.7	2.00	2.00	0.00
1,480.0	27.60	123.64	1,427.2	-180.6	271.4	326.0	2.00	2.00	0.00
1,520.0	28.40	123.64	1,462.6	-191.0	287.0	344.8	2.00	2.00	0.00
1,560.0	29.20	123.64	1,497.6	-201.7	303.1	364.1	2.00	2.00	0.00
1,576.7	29.53	123.64	1,512.2	-206.2	309.9	372.2	2.00	2.00	0.00
1,600.0	29.53	123.64	1,532.4	-212.6	319.5	383.7	0.00	0.00	0.00
1,640.0	29.53	123.64	1,567.2	-223.5	335.9	403.4	0.00	0.00	0.00
1,680.0	29.53	123.64	1,602.0	-234.4	352.3	423.2	0.00	0.00	0.00
1,720.0	29.53	123.64	1,636.8	-245.3	368.7	442.9	0.00	0.00	0.00
1,760.0	29.53	123.64	1,671.7	-256.2	385.1	462.6	0.00	0.00	0.00
1,800.0	29.53	123.64	1,706.5	-267.2	401.6	482.3	0.00	0.00	0.00
1,840.0	29.53	123.64	1,741.3	-278.1	418.0	502.0	0.00	0.00	0.00
1,880.0	29.53	123.64	1,776.1	-289.0	434.4	521.7	0.00	0.00	0.00
1,920.0	29.53	123.64	1,810.9	-299.9	450.8	541.5	0.00	0.00	0.00

Database:	Landmark	Local Co-ordinate Reference:	Well Casa Loma 25-25
Company:	BAYSWATER EXPLORATION & PRODUCTION	TVD Reference:	WELL @ 4968.0ft (Original Well Elev)
Project:	SEC.26-T7N-R67W	MD Reference:	WELL @ 4968.0ft (Original Well Elev)
Site:	Casa Loma 8 Pad Sec.26-T7N-R67W	North Reference:	True
Well:	Casa Loma 25-25	Survey Calculation Method:	Minimum Curvature
Wellbore:	Wellbore #1		
Design:	Plan #1 (7-16-12)		

Planned Survey									
Measured Depth (ft)	Inclination (°)	Azimuth (°)	Vertical Depth (ft)	+N/-S (ft)	+E/-W (ft)	Vertical Section (ft)	Dogleg Rate (°/100ft)	Build Rate (°/100ft)	Turn Rate (°/100ft)
1,960.0	29.53	123.64	1,845.7	-310.9	467.2	561.2	0.00	0.00	0.00
2,000.0	29.53	123.64	1,880.5	-321.8	483.6	580.9	0.00	0.00	0.00
2,040.0	29.53	123.64	1,915.3	-332.7	500.0	600.6	0.00	0.00	0.00
2,080.0	29.53	123.64	1,950.1	-343.6	516.5	620.3	0.00	0.00	0.00
2,120.0	29.53	123.64	1,984.9	-354.6	532.9	640.1	0.00	0.00	0.00
2,160.0	29.53	123.64	2,019.7	-365.5	549.3	659.8	0.00	0.00	0.00
2,200.0	29.53	123.64	2,054.5	-376.4	565.7	679.5	0.00	0.00	0.00
2,240.0	29.53	123.64	2,089.3	-387.3	582.1	699.2	0.00	0.00	0.00
2,280.0	29.53	123.64	2,124.1	-398.2	598.5	718.9	0.00	0.00	0.00
2,320.0	29.53	123.64	2,158.9	-409.2	615.0	738.6	0.00	0.00	0.00
2,360.0	29.53	123.64	2,193.7	-420.1	631.4	758.4	0.00	0.00	0.00
2,400.0	29.53	123.64	2,228.5	-431.0	647.8	778.1	0.00	0.00	0.00
2,440.0	29.53	123.64	2,263.3	-441.9	664.2	797.8	0.00	0.00	0.00
2,480.0	29.53	123.64	2,298.1	-452.9	680.6	817.5	0.00	0.00	0.00
2,520.0	29.53	123.64	2,332.9	-463.8	697.0	837.2	0.00	0.00	0.00
2,560.0	29.53	123.64	2,367.7	-474.7	713.5	856.9	0.00	0.00	0.00
2,600.0	29.53	123.64	2,402.5	-485.6	729.9	876.7	0.00	0.00	0.00
2,640.0	29.53	123.64	2,437.3	-496.5	746.3	896.4	0.00	0.00	0.00
2,680.0	29.53	123.64	2,472.1	-507.5	762.7	916.1	0.00	0.00	0.00
2,720.0	29.53	123.64	2,506.9	-518.4	779.1	935.8	0.00	0.00	0.00
2,760.0	29.53	123.64	2,541.7	-529.3	795.5	955.5	0.00	0.00	0.00
2,800.0	29.53	123.64	2,576.5	-540.2	812.0	975.3	0.00	0.00	0.00
2,840.0	29.53	123.64	2,611.3	-551.2	828.4	995.0	0.00	0.00	0.00
2,880.0	29.53	123.64	2,646.1	-562.1	844.8	1,014.7	0.00	0.00	0.00
2,920.0	29.53	123.64	2,680.9	-573.0	861.2	1,034.4	0.00	0.00	0.00
2,960.0	29.53	123.64	2,715.7	-583.9	877.6	1,054.1	0.00	0.00	0.00
3,000.0	29.53	123.64	2,750.5	-594.8	894.0	1,073.8	0.00	0.00	0.00
3,040.0	29.53	123.64	2,785.3	-605.8	910.4	1,093.6	0.00	0.00	0.00
3,080.0	29.53	123.64	2,820.1	-616.7	926.9	1,113.3	0.00	0.00	0.00
3,120.0	29.53	123.64	2,854.9	-627.6	943.3	1,133.0	0.00	0.00	0.00
3,160.0	29.53	123.64	2,889.7	-638.5	959.7	1,152.7	0.00	0.00	0.00
3,200.0	29.53	123.64	2,924.5	-649.5	976.1	1,172.4	0.00	0.00	0.00
3,240.0	29.53	123.64	2,959.3	-660.4	992.5	1,192.1	0.00	0.00	0.00
3,280.0	29.53	123.64	2,994.2	-671.3	1,008.9	1,211.9	0.00	0.00	0.00
3,320.0	29.53	123.64	3,029.0	-682.2	1,025.4	1,231.6	0.00	0.00	0.00
3,360.0	29.53	123.64	3,063.8	-693.1	1,041.8	1,251.3	0.00	0.00	0.00
3,400.0	29.53	123.64	3,098.6	-704.1	1,058.2	1,271.0	0.00	0.00	0.00
3,440.0	29.53	123.64	3,133.4	-715.0	1,074.6	1,290.7	0.00	0.00	0.00
3,480.0	29.53	123.64	3,168.2	-725.9	1,091.0	1,310.4	0.00	0.00	0.00
3,520.0	29.53	123.64	3,203.0	-736.8	1,107.4	1,330.2	0.00	0.00	0.00
3,560.0	29.53	123.64	3,237.8	-747.8	1,123.9	1,349.9	0.00	0.00	0.00
3,600.0	29.53	123.64	3,272.6	-758.7	1,140.3	1,369.6	0.00	0.00	0.00
3,640.0	29.53	123.64	3,307.4	-769.6	1,156.7	1,389.3	0.00	0.00	0.00
3,680.0	29.53	123.64	3,342.2	-780.5	1,173.1	1,409.0	0.00	0.00	0.00
3,720.0	29.53	123.64	3,377.0	-791.4	1,189.5	1,428.8	0.00	0.00	0.00
3,760.0	29.53	123.64	3,411.8	-802.4	1,205.9	1,448.5	0.00	0.00	0.00
3,800.0	29.53	123.64	3,446.6	-813.3	1,222.4	1,468.2	0.00	0.00	0.00
3,840.0	29.53	123.64	3,481.4	-824.2	1,238.8	1,487.9	0.00	0.00	0.00
3,880.0	29.53	123.64	3,516.2	-835.1	1,255.2	1,507.6	0.00	0.00	0.00
3,920.0	29.53	123.64	3,551.0	-846.1	1,271.6	1,527.3	0.00	0.00	0.00
3,960.0	29.53	123.64	3,585.8	-857.0	1,288.0	1,547.1	0.00	0.00	0.00
4,000.0	29.53	123.64	3,620.6	-867.9	1,304.4	1,566.8	0.00	0.00	0.00
4,014.3	29.53	123.64	3,633.0	-871.8	1,310.3	1,573.8	0.00	0.00	0.00

Database:	Landmark	Local Co-ordinate Reference:	Well Casa Loma 25-25
Company:	BAYSWATER EXPLORATION & PRODUCTION	TVD Reference:	WELL @ 4968.0ft (Original Well Elev)
Project:	SEC.26-T7N-R67W	MD Reference:	WELL @ 4968.0ft (Original Well Elev)
Site:	Casa Loma 8 Pad Sec.26-T7N-R67W	North Reference:	True
Well:	Casa Loma 25-25	Survey Calculation Method:	Minimum Curvature
Wellbore:	Wellbore #1		
Design:	Plan #1 (7-16-12)		

Planned Survey

Measured Depth (ft)	Inclination (°)	Azimuth (°)	Vertical Depth (ft)	+N/-S (ft)	+E/-W (ft)	Vertical Section (ft)	Dogleg Rate (°/100ft)	Build Rate (°/100ft)	Turn Rate (°/100ft)
PARKMAN									
4,040.0	29.53	123.64	3,655.4	-878.8	1,320.8	1,586.5	0.00	0.00	0.00
4,080.0	29.53	123.64	3,690.2	-889.7	1,337.3	1,606.2	0.00	0.00	0.00
4,120.0	29.53	123.64	3,725.0	-900.7	1,353.7	1,625.9	0.00	0.00	0.00
4,160.0	29.53	123.64	3,759.8	-911.6	1,370.1	1,645.6	0.00	0.00	0.00
4,200.0	29.53	123.64	3,794.6	-922.5	1,386.5	1,665.4	0.00	0.00	0.00
4,240.0	29.53	123.64	3,829.4	-933.4	1,402.9	1,685.1	0.00	0.00	0.00
4,280.0	29.53	123.64	3,864.2	-944.4	1,419.3	1,704.8	0.00	0.00	0.00
4,320.0	29.53	123.64	3,899.0	-955.3	1,435.8	1,724.5	0.00	0.00	0.00
4,360.0	29.53	123.64	3,933.8	-966.2	1,452.2	1,744.2	0.00	0.00	0.00
4,400.0	29.53	123.64	3,968.6	-977.1	1,468.6	1,764.0	0.00	0.00	0.00
4,440.0	29.53	123.64	4,003.4	-988.0	1,485.0	1,783.7	0.00	0.00	0.00
4,480.0	29.53	123.64	4,038.2	-999.0	1,501.4	1,803.4	0.00	0.00	0.00
4,520.0	29.53	123.64	4,073.0	-1,009.9	1,517.8	1,823.1	0.00	0.00	0.00
4,560.0	29.53	123.64	4,107.8	-1,020.8	1,534.3	1,842.8	0.00	0.00	0.00
4,600.0	29.53	123.64	4,142.6	-1,031.7	1,550.7	1,862.5	0.00	0.00	0.00
4,640.0	29.53	123.64	4,177.4	-1,042.7	1,567.1	1,882.3	0.00	0.00	0.00
4,680.0	29.53	123.64	4,212.2	-1,053.6	1,583.5	1,902.0	0.00	0.00	0.00
4,720.0	29.53	123.64	4,247.0	-1,064.5	1,599.9	1,921.7	0.00	0.00	0.00
4,760.0	29.53	123.64	4,281.8	-1,075.4	1,616.3	1,941.4	0.00	0.00	0.00
4,800.0	29.53	123.64	4,316.6	-1,086.3	1,632.7	1,961.1	0.00	0.00	0.00
4,840.0	29.53	123.64	4,351.5	-1,097.3	1,649.2	1,980.8	0.00	0.00	0.00
4,870.5	29.53	123.64	4,378.0	-1,105.6	1,661.7	1,995.9	0.00	0.00	0.00
SUSSEX									
4,880.0	29.53	123.64	4,386.3	-1,108.2	1,665.6	2,000.6	0.00	0.00	0.00
4,920.0	29.53	123.64	4,421.1	-1,119.1	1,682.0	2,020.3	0.00	0.00	0.00
4,960.0	29.53	123.64	4,455.9	-1,130.0	1,698.4	2,040.0	0.00	0.00	0.00
5,000.0	29.53	123.64	4,490.7	-1,141.0	1,714.8	2,059.7	0.00	0.00	0.00
5,040.0	29.53	123.64	4,525.5	-1,151.9	1,731.2	2,079.4	0.00	0.00	0.00
5,080.0	29.53	123.64	4,560.3	-1,162.8	1,747.7	2,099.1	0.00	0.00	0.00
5,120.0	29.53	123.64	4,595.1	-1,173.7	1,764.1	2,118.9	0.00	0.00	0.00
5,160.0	29.53	123.64	4,629.9	-1,184.6	1,780.5	2,138.6	0.00	0.00	0.00
5,200.0	29.53	123.64	4,664.7	-1,195.6	1,796.9	2,158.3	0.00	0.00	0.00
5,240.0	29.53	123.64	4,699.5	-1,206.5	1,813.3	2,178.0	0.00	0.00	0.00
5,280.0	29.53	123.64	4,734.3	-1,217.4	1,829.7	2,197.7	0.00	0.00	0.00
5,307.3	29.53	123.64	4,758.0	-1,224.9	1,840.9	2,211.2	0.00	0.00	0.00
SHANNON									
5,320.0	29.53	123.64	4,769.1	-1,228.3	1,846.2	2,217.5	0.00	0.00	0.00
5,360.0	29.53	123.64	4,803.9	-1,239.3	1,862.6	2,237.2	0.00	0.00	0.00
5,400.0	29.53	123.64	4,838.7	-1,250.2	1,879.0	2,256.9	0.00	0.00	0.00
5,440.0	29.53	123.64	4,873.5	-1,261.1	1,895.4	2,276.6	0.00	0.00	0.00
5,480.0	29.53	123.64	4,908.3	-1,272.0	1,911.8	2,296.3	0.00	0.00	0.00
5,520.0	29.53	123.64	4,943.1	-1,282.9	1,928.2	2,316.0	0.00	0.00	0.00
5,560.0	29.53	123.64	4,977.9	-1,293.9	1,944.7	2,335.8	0.00	0.00	0.00
5,600.0	29.53	123.64	5,012.7	-1,304.8	1,961.1	2,355.5	0.00	0.00	0.00
5,640.0	29.53	123.64	5,047.5	-1,315.7	1,977.5	2,375.2	0.00	0.00	0.00
5,680.0	29.53	123.64	5,082.3	-1,326.6	1,993.9	2,394.9	0.00	0.00	0.00
5,720.0	29.53	123.64	5,117.1	-1,337.6	2,010.3	2,414.6	0.00	0.00	0.00
5,760.0	29.53	123.64	5,151.9	-1,348.5	2,026.7	2,434.3	0.00	0.00	0.00
5,800.0	29.53	123.64	5,186.7	-1,359.4	2,043.1	2,454.1	0.00	0.00	0.00
5,840.0	29.53	123.64	5,221.5	-1,370.3	2,059.6	2,473.8	0.00	0.00	0.00
5,880.0	29.53	123.64	5,256.3	-1,381.2	2,076.0	2,493.5	0.00	0.00	0.00
5,920.0	29.53	123.64	5,291.1	-1,392.2	2,092.4	2,513.2	0.00	0.00	0.00

Database:	Landmark	Local Co-ordinate Reference:	Well Casa Loma 25-25
Company:	BAYSWATER EXPLORATION & PRODUCTION	TVD Reference:	WELL @ 4968.0ft (Original Well Elev)
Project:	SEC.26-T7N-R67W	MD Reference:	WELL @ 4968.0ft (Original Well Elev)
Site:	Casa Loma 8 Pad Sec.26-T7N-R67W	North Reference:	True
Well:	Casa Loma 25-25	Survey Calculation Method:	Minimum Curvature
Wellbore:	Wellbore #1		
Design:	Plan #1 (7-16-12)		

Planned Survey									
Measured Depth (ft)	Inclination (°)	Azimuth (°)	Vertical Depth (ft)	+N/-S (ft)	+E/-W (ft)	Vertical Section (ft)	Dogleg Rate (°/100ft)	Build Rate (°/100ft)	Turn Rate (°/100ft)
5,960.0	29.53	123.64	5,325.9	-1,403.1	2,108.8	2,532.9	0.00	0.00	0.00
6,000.0	29.53	123.64	5,360.7	-1,414.0	2,125.2	2,552.7	0.00	0.00	0.00
6,040.0	29.53	123.64	5,395.5	-1,424.9	2,141.6	2,572.4	0.00	0.00	0.00
6,080.0	29.53	123.64	5,430.3	-1,435.9	2,158.1	2,592.1	0.00	0.00	0.00
6,120.0	29.53	123.64	5,465.1	-1,446.8	2,174.5	2,611.8	0.00	0.00	0.00
6,160.0	29.53	123.64	5,499.9	-1,457.7	2,190.9	2,631.5	0.00	0.00	0.00
6,200.0	29.53	123.64	5,534.7	-1,468.6	2,207.3	2,651.2	0.00	0.00	0.00
6,240.0	29.53	123.64	5,569.5	-1,479.5	2,223.7	2,671.0	0.00	0.00	0.00
6,280.0	29.53	123.64	5,604.3	-1,490.5	2,240.1	2,690.7	0.00	0.00	0.00
6,320.0	29.53	123.64	5,639.1	-1,501.4	2,256.6	2,710.4	0.00	0.00	0.00
6,360.0	29.53	123.64	5,673.9	-1,512.3	2,273.0	2,730.1	0.00	0.00	0.00
6,400.0	29.53	123.64	5,708.8	-1,523.2	2,289.4	2,749.8	0.00	0.00	0.00
6,440.0	29.53	123.64	5,743.6	-1,534.2	2,305.8	2,769.5	0.00	0.00	0.00
6,480.0	29.53	123.64	5,778.4	-1,545.1	2,322.2	2,789.3	0.00	0.00	0.00
6,520.0	29.53	123.64	5,813.2	-1,556.0	2,338.6	2,809.0	0.00	0.00	0.00
6,560.0	29.53	123.64	5,848.0	-1,566.9	2,355.1	2,828.7	0.00	0.00	0.00
6,600.0	29.53	123.64	5,882.8	-1,577.8	2,371.5	2,848.4	0.00	0.00	0.00
6,640.0	29.53	123.64	5,917.6	-1,588.8	2,387.9	2,868.1	0.00	0.00	0.00
6,680.0	29.53	123.64	5,952.4	-1,599.7	2,404.3	2,887.8	0.00	0.00	0.00
6,720.0	29.53	123.64	5,987.2	-1,610.6	2,420.7	2,907.6	0.00	0.00	0.00
6,760.0	29.53	123.64	6,022.0	-1,621.5	2,437.1	2,927.3	0.00	0.00	0.00
6,800.0	29.53	123.64	6,056.8	-1,632.5	2,453.5	2,947.0	0.00	0.00	0.00
6,835.7	29.53	123.64	6,087.8	-1,642.2	2,468.2	2,964.6	0.00	0.00	0.00
6,840.0	29.45	123.64	6,091.6	-1,643.4	2,470.0	2,966.7	2.00	-2.00	0.00
6,880.0	28.65	123.64	6,126.6	-1,654.1	2,486.1	2,986.1	2.00	-2.00	0.00
6,920.0	27.85	123.64	6,161.8	-1,664.6	2,501.9	3,005.1	2.00	-2.00	0.00
6,960.0	27.05	123.64	6,197.3	-1,674.8	2,517.2	3,023.5	2.00	-2.00	0.00
7,000.0	26.25	123.64	6,233.0	-1,684.8	2,532.2	3,041.4	2.00	-2.00	0.00
7,040.0	25.45	123.64	6,269.0	-1,694.4	2,546.7	3,058.9	2.00	-2.00	0.00
7,080.0	24.65	123.64	6,305.3	-1,703.8	2,560.8	3,075.8	2.00	-2.00	0.00
7,120.0	23.85	123.64	6,341.7	-1,712.9	2,574.5	3,092.2	2.00	-2.00	0.00
7,160.0	23.05	123.64	6,378.4	-1,721.7	2,587.7	3,108.2	2.00	-2.00	0.00
7,200.0	22.25	123.64	6,415.4	-1,730.3	2,600.5	3,123.6	2.00	-2.00	0.00
7,240.0	21.45	123.64	6,452.5	-1,738.5	2,612.9	3,138.5	2.00	-2.00	0.00
7,280.0	20.65	123.64	6,489.8	-1,746.5	2,624.9	3,152.8	2.00	-2.00	0.00
7,320.0	19.85	123.64	6,527.3	-1,754.1	2,636.4	3,166.7	2.00	-2.00	0.00
7,360.0	19.05	123.64	6,565.1	-1,761.5	2,647.5	3,180.0	2.00	-2.00	0.00
7,400.0	18.25	123.64	6,603.0	-1,768.6	2,658.2	3,192.8	2.00	-2.00	0.00
7,440.0	17.45	123.64	6,641.0	-1,775.4	2,668.4	3,205.0	2.00	-2.00	0.00
7,480.0	16.65	123.64	6,679.3	-1,781.9	2,678.1	3,216.8	2.00	-2.00	0.00
7,520.0	15.85	123.64	6,717.7	-1,788.1	2,687.4	3,227.9	2.00	-2.00	0.00
7,560.0	15.05	123.64	6,756.2	-1,794.0	2,696.3	3,238.6	2.00	-2.00	0.00
7,600.0	14.25	123.64	6,794.9	-1,799.6	2,704.7	3,248.7	2.00	-2.00	0.00
7,640.0	13.45	123.64	6,833.8	-1,804.9	2,712.7	3,258.3	2.00	-2.00	0.00
7,680.0	12.65	123.64	6,872.7	-1,809.9	2,720.2	3,267.3	2.00	-2.00	0.00
7,720.0	11.85	123.64	6,911.8	-1,814.6	2,727.3	3,275.8	2.00	-2.00	0.00
7,760.0	11.05	123.64	6,951.0	-1,819.0	2,733.9	3,283.7	2.00	-2.00	0.00
7,800.0	10.25	123.64	6,990.3	-1,823.1	2,740.1	3,291.1	2.00	-2.00	0.00
7,840.0	9.45	123.64	7,029.7	-1,826.9	2,745.8	3,298.0	2.00	-2.00	0.00
7,858.5	9.08	123.64	7,048.0	-1,828.5	2,748.2	3,301.0	2.00	-2.00	0.00
NIOBRARA									
7,864.0	8.97	123.64	7,053.5	-1,829.0	2,749.0	3,301.8	2.00	-2.00	0.00

Database:	Landmark	Local Co-ordinate Reference:	Well Casa Loma 25-25
Company:	BAYSWATER EXPLORATION & PRODUCTION	TVD Reference:	WELL @ 4968.0ft (Original Well Elev)
Project:	SEC.26-T7N-R67W	MD Reference:	WELL @ 4968.0ft (Original Well Elev)
Site:	Casa Loma 8 Pad Sec.26-T7N-R67W	North Reference:	True
Well:	Casa Loma 25-25	Survey Calculation Method:	Minimum Curvature
Wellbore:	Wellbore #1		
Design:	Plan #1 (7-16-12)		

Planned Survey

Measured Depth (ft)	Inclination (°)	Azimuth (°)	Vertical Depth (ft)	+N/-S (ft)	+E/-W (ft)	Vertical Section (ft)	Dogleg Rate (°/100ft)	Build Rate (°/100ft)	Turn Rate (°/100ft)
TARGET CIRCLE 2557'FNL & 2550'FWL									
7,880.0	8.65	123.64	7,069.2	-1,830.4	2,751.0	3,304.3	2.00	-2.00	0.00
7,920.0	7.85	123.64	7,108.8	-1,833.5	2,755.8	3,310.0	2.00	-2.00	0.00
7,960.0	7.05	123.64	7,148.5	-1,836.4	2,760.1	3,315.2	2.00	-2.00	0.00
8,000.0	6.25	123.64	7,188.2	-1,839.0	2,763.9	3,319.8	2.00	-2.00	0.00
8,040.0	5.45	123.64	7,228.0	-1,841.2	2,767.3	3,323.9	2.00	-2.00	0.00
8,080.0	4.65	123.64	7,267.9	-1,843.2	2,770.3	3,327.4	2.00	-2.00	0.00
8,120.0	3.85	123.64	7,307.8	-1,844.8	2,772.7	3,330.4	2.00	-2.00	0.00
8,125.3	3.74	123.64	7,313.0	-1,845.0	2,773.0	3,330.7	2.00	-2.00	0.00
FORT HAYS									
8,160.0	3.05	123.64	7,347.7	-1,846.2	2,774.7	3,332.8	2.00	-2.00	0.00
8,165.3	2.94	123.64	7,353.0	-1,846.3	2,775.0	3,333.1	2.00	-2.00	0.00
CODELL									
8,200.0	2.25	123.64	7,387.6	-1,847.2	2,776.3	3,334.6	2.00	-2.00	0.00
8,215.4	1.94	123.64	7,403.0	-1,847.5	2,776.7	3,335.2	2.00	-2.00	0.00
GREENHORN									
8,240.0	1.45	123.64	7,427.6	-1,847.9	2,777.3	3,335.9	2.00	-2.00	0.00
8,280.0	0.65	123.64	7,467.6	-1,848.3	2,778.0	3,336.7	2.00	-2.00	0.00
8,300.4	0.24	123.64	7,488.0	-1,848.4	2,778.1	3,336.8	2.00	-2.00	0.00
GRANEROS									
8,312.4	0.00	0.00	7,500.0	-1,848.4	2,778.1	3,336.8	2.00	-2.00	0.00
TARGET BHL 2557'FNL & 2550'FWL									
8,317.4	0.00	0.00	7,505.0	-1,848.4	2,778.1	3,336.8	0.00	0.00	0.00
HARDLINE 81'S OF BHL									

Targets

Target Name	- hit/miss target	Dip Angle (°)	Dip Dir. (°)	TVD (ft)	+N/-S (ft)	+E/-W (ft)	Northing (ft)	Easting (ft)	Latitude	Longitude
TARGET BHL 2557'F	- plan hits target center	0.00	0.00	7,500.0	-1,848.4	2,778.1	1,442,208.63	3,182,928.17	40.545399	-104.841773
	- Point									
HARDLINE 81'S OF E	- plan misses target center by 128.7ft at 8317.4ft MD (7505.0 TVD, -1848.4 N, 2778.1 E)	0.00	0.00	7,505.0	-1,929.4	2,878.1	1,442,128.37	3,183,028.75	40.545177	-104.841413
	- Polygon									
	Point 1			7,505.0	0.0	0.0	1,442,128.37	3,183,028.75		
	Point 2			7,505.0	0.0	-200.0	1,442,126.90	3,182,828.76		
TARGET CIRCLE 2557'F	- plan misses target center by 35.4ft at 7864.0ft MD (7053.5 TVD, -1829.0 N, 2749.0 E)	0.00	0.00	7,048.0	-1,848.4	2,778.1	1,442,208.63	3,182,928.17	40.545399	-104.841773
	- Circle (radius 75.0)									

Casing Points

Measured Depth (ft)	Vertical Depth (ft)	Name	Casing Diameter (")	Hole Diameter (")
724.9	720.0	8 5/8"	8-5/8	12-1/4

Database:	Landmark	Local Co-ordinate Reference:	Well Casa Loma 25-25
Company:	BAYSWATER EXPLORATION & PRODUCTION	TVD Reference:	WELL @ 4968.0ft (Original Well Elev)
Project:	SEC.26-T7N-R67W	MD Reference:	WELL @ 4968.0ft (Original Well Elev)
Site:	Casa Loma 8 Pad Sec.26-T7N-R67W	North Reference:	True
Well:	Casa Loma 25-25	Survey Calculation Method:	Minimum Curvature
Wellbore:	Wellbore #1		
Design:	Plan #1 (7-16-12)		

Formations						
Measured Depth (ft)	Vertical Depth (ft)	Name	Lithology	Dip (°)	Dip Direction (°)	
4,014.3	3,633.0	PARKMAN		0.00		
4,870.5	4,378.0	SUSSEX		0.00		
5,307.3	4,758.0	SHANNON		0.00		
7,858.5	7,048.0	NIOBRARA		0.00		
8,125.3	7,313.0	FORT HAYS		0.00		
8,165.3	7,353.0	CODELL		0.00		
8,215.4	7,403.0	GREENHORN		0.00		
8,300.4	7,488.0	GRANEROS		0.00		



BAYSWATER EXPLORATION & PRODUCTION

SEC.26-T7N-R67W

Casa Loma 8 Pad Sec.26-T7N-R67W

Casa Loma 25-25

Wellbore #1

Plan #1 (7-16-12)

Anticollision Report

20 July, 2012

Company:	BAYSWATER EXPLORATION & PRODUCTION	Local Co-ordinate Reference:	Well Casa Loma 25-25
Project:	SEC.26-T7N-R67W	TVD Reference:	WELL @ 4968.0ft (Original Well Elev)
Reference Site:	Casa Loma 8 Pad Sec.26-T7N-R67W	MD Reference:	WELL @ 4968.0ft (Original Well Elev)
Site Error:	0.0ft	North Reference:	True
Reference Well:	Casa Loma 25-25	Survey Calculation Method:	Minimum Curvature
Well Error:	0.0ft	Output errors are at	2.00 sigma
Reference Wellbore	Wellbore #1	Database:	Landmark
Reference Design:	Plan #1 (7-16-12)	Offset TVD Reference:	Offset Datum

Reference	Plan #1 (7-16-12)		
Filter type:	NO GLOBAL FILTER: Using user defined selection & filtering criteria		
Interpolation Method:	Stations	Error Model:	ISCWSA
Depth Range:	Unlimited	Scan Method:	Closest Approach 3D
Results Limited by:	Maximum center-center distance of 10,000.0ft	Error Surface:	Elliptical Conic
Warning Levels Evaluated at:	2.00 Sigma		

Survey Tool Program	Date 7/17/2012			
From (ft)	To (ft)	Survey (Wellbore)	Tool Name	Description
0.0	8,317.4	Plan #1 (7-16-12) (Wellbore #1)	MWD	MWD - Standard

Summary						
Site Name	Reference Measured Depth (ft)	Offset Measured Depth (ft)	Distance Between Centres (ft)	Separation Factor	Warning	
Offset Well - Wellbore - Design						
Casa Loma 8 Pad Sec.26-T7N-R67W						
Casa Loma 22-25 - Wellbore #1 - Plan #1 (7-16-12)	100.0	100.0	16.0	15.8	71.376	CC, ES
Casa Loma 22-25 - Wellbore #1 - Plan #1 (7-16-12)	5,500.0	5,464.6	675.9	585.4	7.468	SF
Casa Loma 6-25 - Wellbore #1 - Plan #1 (7-16-12)	233.8	234.7	15.7	14.9	19.412	CC
Casa Loma 6-25 - Wellbore #1 - Plan #1 (7-16-12)	300.0	300.9	15.9	14.8	14.500	ES
Casa Loma 6-25 - Wellbore #1 - Plan #1 (7-16-12)	5,700.0	5,704.7	251.7	183.7	3.699	SF

Offset Design	Casa Loma 8 Pad Sec.26-T7N-R67W - Casa Loma 22-25 - Wellbore #1 - Plan #1 (7-16-12)												Offset Site Error:	0.0 ft
Survey Program:	0-MWD												Offset Well Error:	0.0 ft
Reference	Offset	Semi Major Axis		Distance		Minimum Separation		Separation Factor	Warning					
Measured Depth (ft)	Vertical Depth (ft)	Measured Depth (ft)	Vertical Depth (ft)	Reference (ft)	Offset (ft)	Highside Toolface (°)	Offset Wellbore Centre +N/-S (ft)	+E/-W (ft)	Between Centres (ft)	Between Ellipses (ft)	Minimum Separation (ft)	Separation Factor		
0.0	0.0	0.0	0.0	0.0	0.0	-134.75	-11.3	-11.4	16.0	16.0	0.00	N/A		
100.0	100.0	100.0	100.0	0.1	0.1	-134.75	-11.3	-11.4	16.0	15.8	0.22	71.376	CC, ES	
200.0	200.0	200.0	200.0	0.3	0.3	107.56	-11.3	-11.4	16.5	15.8	0.66	24.905		
300.0	299.8	300.0	300.0	0.6	0.5	117.74	-12.6	-10.3	18.3	17.2	1.10	16.709		
400.0	399.5	400.1	399.9	0.8	0.8	124.62	-16.6	-6.9	21.5	19.9	1.56	13.771		
500.0	498.7	500.3	499.7	1.1	1.0	128.50	-23.3	-1.3	25.7	23.7	2.08	12.371		
600.0	597.5	600.5	599.2	1.5	1.3	130.23	-32.7	6.6	30.9	28.2	2.67	11.585		
700.0	695.6	700.8	698.3	1.9	1.6	130.59	-44.7	16.7	36.9	33.5	3.34	11.059		
800.0	793.1	801.2	796.8	2.3	2.0	130.10	-59.4	29.1	43.7	39.6	4.10	10.647		
900.0	889.6	901.6	894.6	2.9	2.5	129.13	-76.7	43.6	51.3	46.3	4.99	10.290		
1,000.0	985.3	1,002.0	991.5	3.5	3.0	127.89	-96.6	60.4	59.7	53.8	5.99	9.966		
1,100.0	1,079.8	1,102.4	1,087.5	4.1	3.6	126.52	-119.1	79.4	69.0	61.9	7.14	9.668		
1,200.0	1,173.2	1,202.7	1,182.4	4.9	4.2	125.10	-144.2	100.5	79.2	70.7	8.43	9.394		
1,300.0	1,265.2	1,303.1	1,276.0	5.7	5.0	123.69	-171.8	123.7	90.1	80.3	9.86	9.143		
1,400.0	1,355.8	1,403.4	1,368.3	6.6	5.8	122.31	-201.8	149.0	102.0	90.5	11.44	8.913		
1,500.0	1,444.9	1,503.7	1,459.1	7.5	6.6	120.98	-234.3	176.3	114.6	101.5	13.17	8.704		
1,576.7	1,512.2	1,580.2	1,527.5	8.3	7.3	120.06	-260.7	198.5	125.0	110.4	14.59	8.565		
1,600.0	1,532.4	1,603.3	1,548.0	8.5	7.5	119.93	-268.7	205.3	128.2	113.2	15.02	8.534		
1,700.0	1,619.4	1,702.3	1,636.2	9.6	8.5	119.44	-303.2	234.3	142.2	125.3	16.90	8.414		
1,800.0	1,706.5	1,801.3	1,724.4	10.7	9.4	119.03	-337.6	263.3	156.2	137.4	18.80	8.312		
1,900.0	1,793.5	1,900.3	1,812.6	11.7	10.3	118.70	-372.1	292.3	170.3	149.6	20.70	8.225		

CC - Min centre to center distance or convergent point, SF - min separation factor, ES - min ellipse separation

Company:	BAYSWATER EXPLORATION & PRODUCTION	Local Co-ordinate Reference:	Well Casa Loma 25-25
Project:	SEC.26-T7N-R67W	TVD Reference:	WELL @ 4968.0ft (Original Well Elev)
Reference Site:	Casa Loma 8 Pad Sec.26-T7N-R67W	MD Reference:	WELL @ 4968.0ft (Original Well Elev)
Site Error:	0.0ft	North Reference:	True
Reference Well:	Casa Loma 25-25	Survey Calculation Method:	Minimum Curvature
Well Error:	0.0ft	Output errors are at	2.00 sigma
Reference Wellbore	Wellbore #1	Database:	Landmark
Reference Design:	Plan #1 (7-16-12)	Offset TVD Reference:	Offset Datum

Offset Design		Casa Loma 8 Pad Sec.26-T7N-R67W - Casa Loma 22-25 - Wellbore #1 - Plan #1 (7-16-12)											Offset Site Error:		0.0 ft
Survey Program: 0-MWD													Offset Well Error:		0.0 ft
Reference		Offset		Semi Major Axis		Highside Toolface (°)	Offset Wellbore Centre		Distance		Minimum Separation (ft)	Separation Factor	Warning		
Measured Depth (ft)	Vertical Depth (ft)	Measured Depth (ft)	Vertical Depth (ft)	Reference	Offset		+N/-S (ft)	+E/-W (ft)	Between Centres (ft)	Between Ellipses (ft)					
2,000.0	1,880.5	1,999.3	1,900.8	12.8	11.3	118.41	-406.5	321.2	184.3	161.7	22.61	8.150			
2,100.0	1,967.5	2,098.3	1,988.9	13.9	12.2	118.16	-440.9	350.2	198.3	173.8	24.53	8.085			
2,200.0	2,054.5	2,197.3	2,077.1	15.0	13.2	117.95	-475.4	379.2	212.3	185.9	26.45	8.028			
2,300.0	2,141.5	2,296.3	2,165.3	16.1	14.1	117.76	-509.8	408.2	226.4	198.0	28.38	7.978			
2,400.0	2,228.5	2,395.4	2,253.5	17.1	15.1	117.60	-544.3	437.2	240.4	210.1	30.30	7.934			
2,500.0	2,315.5	2,494.4	2,341.7	18.2	16.0	117.45	-578.7	466.2	254.5	222.2	32.23	7.894			
2,600.0	2,402.5	2,593.4	2,429.8	19.3	17.0	117.32	-613.2	495.2	268.5	234.3	34.17	7.858			
2,700.0	2,489.5	2,692.4	2,518.0	20.4	17.9	117.20	-647.6	524.2	282.5	246.4	36.10	7.826			
2,800.0	2,576.5	2,791.4	2,606.2	21.5	18.9	117.09	-682.1	553.2	296.6	258.5	38.04	7.797			
2,900.0	2,663.5	2,890.4	2,694.4	22.6	19.9	116.99	-716.5	582.2	310.6	270.7	39.97	7.771			
3,000.0	2,750.5	2,989.4	2,782.6	23.7	20.8	116.90	-750.9	611.2	324.7	282.8	41.91	7.746			
3,100.0	2,837.5	3,088.4	2,870.7	24.7	21.8	116.82	-785.4	640.1	338.7	294.9	43.85	7.724			
3,200.0	2,924.5	3,187.4	2,958.9	25.8	22.7	116.75	-819.8	669.1	352.8	307.0	45.79	7.704			
3,300.0	3,011.6	3,286.4	3,047.1	26.9	23.7	116.68	-854.3	698.1	366.8	319.1	47.73	7.685			
3,400.0	3,098.6	3,385.4	3,135.3	28.0	24.6	116.61	-888.7	727.1	380.9	331.2	49.67	7.667			
3,500.0	3,185.6	3,484.4	3,223.5	29.1	25.6	116.55	-923.2	756.1	394.9	343.3	51.62	7.651			
3,600.0	3,272.6	3,583.4	3,311.6	30.2	26.6	116.50	-957.6	785.1	409.0	355.4	53.56	7.636			
3,700.0	3,359.6	3,682.4	3,399.8	31.3	27.5	116.44	-992.1	814.1	423.0	367.5	55.50	7.622			
3,800.0	3,446.6	3,781.5	3,488.0	32.4	28.5	116.40	-1,026.5	843.1	437.1	379.6	57.44	7.609			
3,900.0	3,533.6	3,880.5	3,576.2	33.5	29.4	116.35	-1,061.0	872.1	451.1	391.7	59.39	7.596			
4,000.0	3,620.6	3,979.5	3,664.3	34.5	30.4	116.31	-1,095.4	901.1	465.2	403.8	61.33	7.584			
4,100.0	3,707.6	4,078.5	3,752.5	35.6	31.3	116.27	-1,129.8	930.1	479.2	415.9	63.27	7.573			
4,200.0	3,794.6	4,177.5	3,840.7	36.7	32.3	116.23	-1,164.3	959.1	493.3	428.0	65.22	7.563			
4,300.0	3,881.6	4,276.5	3,928.9	37.8	33.3	116.19	-1,198.7	988.0	507.3	440.1	67.16	7.553			
4,400.0	3,968.6	4,375.5	4,017.1	38.9	34.2	116.16	-1,233.2	1,017.0	521.4	452.2	69.11	7.544			
4,500.0	4,055.6	4,474.5	4,105.2	40.0	35.2	116.13	-1,267.6	1,046.0	535.4	464.4	71.05	7.535			
4,600.0	4,142.6	4,573.5	4,193.4	41.1	36.1	116.10	-1,302.1	1,075.0	549.5	476.5	73.00	7.527			
4,700.0	4,229.6	4,672.5	4,281.6	42.2	37.1	116.07	-1,336.5	1,104.0	563.5	488.6	74.94	7.519			
4,800.0	4,316.6	4,771.5	4,369.8	43.3	38.1	116.04	-1,371.0	1,133.0	577.6	500.7	76.89	7.512			
4,900.0	4,403.7	4,870.5	4,458.0	44.4	39.0	116.01	-1,405.4	1,162.0	591.6	512.8	78.84	7.504			
5,000.0	4,490.7	4,969.5	4,546.1	45.4	40.0	115.99	-1,439.8	1,191.0	605.7	524.9	80.78	7.498			
5,100.0	4,577.7	5,068.6	4,634.3	46.5	40.9	115.96	-1,474.3	1,220.0	619.7	537.0	82.73	7.491			
5,200.0	4,664.7	5,167.6	4,722.5	47.6	41.9	115.94	-1,508.7	1,249.0	633.8	549.1	84.67	7.485			
5,300.0	4,751.7	5,266.6	4,810.7	48.7	42.8	115.92	-1,543.2	1,278.0	647.8	561.2	86.62	7.479			
5,400.0	4,838.7	5,365.6	4,898.9	49.8	43.8	115.90	-1,577.6	1,306.9	661.9	573.3	88.57	7.473			
5,500.0	4,925.7	5,464.6	4,987.0	50.9	44.8	115.88	-1,612.1	1,335.9	675.9	585.4	90.51	7.468 SF			
5,600.0	5,012.7	5,559.6	5,072.2	52.0	45.5	115.96	-1,644.3	1,363.1	690.2	598.0	92.20	7.486			
5,700.0	5,099.7	5,653.7	5,157.8	53.1	46.1	116.28	-1,674.1	1,388.1	705.2	611.5	93.68	7.528			
5,800.0	5,186.7	5,747.3	5,244.3	54.2	46.7	116.84	-1,701.5	1,411.2	720.9	625.9	94.99	7.589			
5,900.0	5,273.7	5,840.1	5,331.1	55.3	47.3	117.59	-1,726.6	1,432.4	737.4	641.2	96.13	7.670			
6,000.0	5,360.7	5,932.0	5,418.1	56.4	47.8	118.53	-1,749.4	1,451.5	754.8	657.7	97.10	7.773			
6,100.0	5,447.7	6,022.8	5,504.9	57.5	48.2	119.63	-1,769.7	1,468.6	773.2	675.3	97.90	7.898			
6,200.0	5,534.7	6,112.4	5,591.4	58.5	48.6	120.86	-1,787.7	1,483.7	792.8	694.3	98.51	8.048			
6,300.0	5,621.7	6,200.0	5,676.5	59.6	49.0	122.20	-1,803.3	1,496.9	813.7	714.8	98.96	8.223			
6,400.0	5,708.8	6,287.3	5,762.0	60.7	49.2	123.64	-1,816.8	1,508.3	836.2	737.0	99.22	8.428			
6,500.0	5,795.8	6,372.3	5,845.7	61.8	49.5	125.14	-1,828.1	1,517.7	860.2	760.9	99.31	8.662			
6,600.0	5,882.8	6,455.5	5,928.1	62.9	49.7	126.69	-1,837.2	1,525.5	886.0	786.8	99.25	8.927			
6,700.0	5,969.8	6,537.0	6,009.0	64.0	49.9	128.27	-1,844.5	1,531.5	913.7	814.7	99.06	9.224			
6,800.0	6,056.8	6,616.5	6,088.2	65.1	50.0	129.86	-1,849.8	1,536.0	943.4	844.7	98.73	9.555			
6,835.7	6,087.8	6,644.5	6,116.1	65.5	50.1	130.42	-1,851.3	1,537.3	954.5	855.9	98.59	9.682			
6,900.0	6,144.1	6,700.0	6,171.6	66.1	50.1	131.85	-1,853.6	1,539.2	974.8	876.8	97.97	9.949			

CC - Min centre to center distance or convergent point, SF - min separation factor, ES - min ellipse separation

Company:	BAYSWATER EXPLORATION & PRODUCTION	Local Co-ordinate Reference:	Well Casa Loma 25-25
Project:	SEC.26-T7N-R67W	TVD Reference:	WELL @ 4968.0ft (Original Well Elev)
Reference Site:	Casa Loma 8 Pad Sec.26-T7N-R67W	MD Reference:	WELL @ 4968.0ft (Original Well Elev)
Site Error:	0.0ft	North Reference:	True
Reference Well:	Casa Loma 25-25	Survey Calculation Method:	Minimum Curvature
Well Error:	0.0ft	Output errors are at	2.00 sigma
Reference Wellbore	Wellbore #1	Database:	Landmark
Reference Design:	Plan #1 (7-16-12)	Offset TVD Reference:	Offset Datum

Offset Design Casa Loma 8 Pad Sec.26-T7N-R67W - Casa Loma 22-25 - Wellbore #1 - Plan #1 (7-16-12)													Offset Site Error:	0.0 ft
Survey Program: 0-MWD													Offset Well Error:	0.0 ft
Measured Depth (ft)	Vertical Depth (ft)	Measured Depth (ft)	Vertical Depth (ft)	Semi Major Axis		Highside Toolface (°)	Offset Wellbore Centre		Distance		Minimum Separation (ft)	Separation Factor	Warning	
Reference	Offset	Reference	Offset	(ft)	(ft)		+N/-S (ft)	+E/-W (ft)	Between Centres (ft)	Between Ellipses (ft)				
7,000.0	6,233.0	6,771.6	6,243.1	66.9	50.2	133.68	-1,855.4	1,540.7	1,006.1	909.0	97.11	10.360		
7,100.0	6,323.5	6,852.0	6,323.5	67.7	50.2	135.55	-1,855.8	1,541.1	1,037.1	941.1	96.05	10.797		
7,200.0	6,415.4	6,943.8	6,415.4	68.4	50.3	137.41	-1,855.8	1,541.1	1,066.9	972.0	94.86	11.246		
7,300.0	6,508.6	7,037.0	6,508.6	69.0	50.3	139.03	-1,855.8	1,541.1	1,094.7	1,001.0	93.77	11.675		
7,400.0	6,603.0	7,131.4	6,603.0	69.6	50.4	140.46	-1,855.8	1,541.1	1,120.5	1,027.7	92.77	12.078		
7,500.0	6,698.5	7,226.9	6,698.5	70.1	50.4	141.68	-1,855.8	1,541.1	1,144.0	1,052.1	91.88	12.451		
7,600.0	6,794.9	7,323.4	6,794.9	70.5	50.5	142.74	-1,855.8	1,541.1	1,165.0	1,073.9	91.08	12.792		
7,700.0	6,892.3	7,420.7	6,892.3	70.9	50.5	143.63	-1,855.8	1,541.1	1,183.5	1,093.2	90.37	13.096		
7,800.0	6,990.3	7,518.8	6,990.3	71.2	50.6	144.36	-1,855.8	1,541.1	1,199.4	1,109.7	89.76	13.363		
7,900.0	7,089.0	7,617.5	7,089.0	71.5	50.7	144.96	-1,855.8	1,541.1	1,212.6	1,123.4	89.23	13.589		
8,000.0	7,188.2	7,716.7	7,188.2	71.7	50.7	145.41	-1,855.8	1,541.1	1,223.0	1,134.2	88.80	13.773		
8,100.0	7,287.8	7,816.3	7,287.8	71.9	50.8	145.74	-1,855.8	1,541.1	1,230.5	1,142.1	88.44	13.913		
8,200.0	7,387.6	7,916.1	7,387.6	72.0	50.8	145.94	-1,855.8	1,541.1	1,235.2	1,147.0	88.17	14.009		
8,300.0	7,487.6	8,013.5	7,485.0	72.1	50.9	146.02	-1,855.8	1,541.1	1,237.0	1,149.0	87.99	14.058		
8,312.4	7,500.0	8,013.5	7,485.0	72.1	50.9	-90.34	-1,855.8	1,541.1	1,237.1	1,149.2	87.97	14.063		
8,317.4	7,505.0	8,013.5	7,485.0	72.1	50.9	-90.34	-1,855.8	1,541.1	1,237.2	1,149.2	87.97	14.063		

Offset Design Casa Loma 8 Pad Sec.26-T7N-R67W - Casa Loma 6-25 - Wellbore #1 - Plan #1 (7-16-12)													Offset Site Error: 0.0 ft	
Survey Program: 0-MWD													Offset Well Error: 0.0 ft	
Reference		Offset		Semi Major Axis			Distance							Warning
Measured Depth	Vertical Depth	Measured Depth	Vertical Depth	Reference	Offset	Highside Toolface	Offset Wellbore Centre		Between Centres	Between Ellipses	Minimum Separation	Separation Factor		
(ft)	(ft)	(ft)	(ft)	(ft)	(ft)	(°)	+N/-S (ft)	+E/-W (ft)	(ft)	(ft)	(ft)			
0.0	0.0	1.0	1.0	0.0	0.0	45.25	11.3	11.4	16.0	16.0	0.00	N/A		
100.0	100.0	101.0	101.0	0.1	0.1	45.25	11.3	11.4	16.0	15.8	0.23	70.669		
200.0	200.0	201.0	201.0	0.3	0.3	-84.60	11.3	11.4	15.8	15.1	0.66	23.808		
233.8	233.7	234.7	234.7	0.4	0.4	-88.84	11.2	11.6	15.7	14.9	0.81	19.412	CC	
300.0	299.8	300.9	300.9	0.6	0.5	-97.11	10.4	12.9	15.9	14.8	1.10	14.500	ES	
400.0	399.5	400.9	400.8	0.8	0.8	-108.63	7.7	17.5	17.0	15.4	1.57	10.817		
500.0	498.7	501.1	500.5	1.1	1.0	-118.15	3.3	25.0	18.9	16.8	2.10	9.000		
600.0	597.5	601.4	600.1	1.5	1.3	-125.48	-2.9	35.6	21.3	18.6	2.66	8.002		
700.0	695.6	701.8	699.2	1.9	1.6	-130.91	-10.8	49.2	24.2	20.9	3.27	7.389		
800.0	793.1	802.3	797.8	2.3	2.0	-134.84	-20.6	65.8	27.3	23.4	3.92	6.963		
900.0	889.6	902.9	895.9	2.9	2.5	-137.65	-32.0	85.5	30.7	26.1	4.63	6.629		
1,000.0	985.3	1,003.6	993.1	3.5	3.0	-139.61	-45.2	108.1	34.3	28.9	5.40	6.341		
1,100.0	1,079.8	1,104.5	1,089.6	4.1	3.6	-140.95	-60.2	133.6	38.0	31.7	6.25	6.075		
1,200.0	1,173.2	1,205.5	1,185.0	4.9	4.3	-141.81	-76.9	162.1	41.8	34.6	7.18	5.821		
1,300.0	1,265.2	1,306.6	1,279.3	5.7	5.0	-142.30	-95.3	193.6	45.7	37.5	8.20	5.573		
1,400.0	1,355.8	1,407.8	1,372.3	6.6	5.8	-142.51	-115.4	227.9	49.7	40.4	9.32	5.330		
1,500.0	1,444.9	1,509.1	1,464.0	7.5	6.7	-142.50	-137.1	265.1	53.8	43.2	10.56	5.093		
1,576.7	1,512.2	1,586.5	1,533.1	8.3	7.5	-142.42	-154.8	295.4	57.0	45.4	11.58	4.924		
1,600.0	1,532.4	1,609.8	1,553.7	8.5	7.7	-142.48	-160.2	304.6	58.1	46.2	11.89	4.887		
1,700.0	1,619.4	1,709.7	1,642.5	9.6	8.7	-142.73	-183.4	344.2	62.8	49.6	13.23	4.748		
1,800.0	1,706.5	1,809.6	1,731.2	10.7	9.7	-142.95	-206.5	383.8	67.5	53.0	14.58	4.632		
1,900.0	1,793.5	1,909.5	1,820.0	11.7	10.6	-143.14	-229.7	423.4	72.3	56.3	15.94	4.534		
2,000.0	1,880.5	2,009.4	1,908.7	12.8	11.6	-143.30	-252.8	462.9	77.0	59.7	17.30	4.450		
2,100.0	1,967.5	2,109.3	1,997.4	13.9	12.6	-143.45	-276.0	502.5	81.7	63.0	18.66	4.378		
2,200.0	2,054.5	2,209.1	2,086.2	15.0	13.6	-143.58	-299.1	542.1	86.4	66.4	20.02	4.315		
2,300.0	2,141.5	2,309.0	2,174.9	16.1	14.6	-143.69	-322.3	581.7	91.1	69.7	21.39	4.260		
2,400.0	2,228.5	2,408.9	2,263.6	17.1	15.6	-143.80	-345.5	621.3	95.9	73.1	22.76	4.212		
2,500.0	2,315.5	2,508.8	2,352.4	18.2	16.6	-143.89	-368.6	660.9	100.6	76.4	24.13	4.168		
2,600.0	2,402.5	2,608.7	2,441.1	19.3	17.6	-143.98	-391.8	700.5	105.3	79.8	25.50	4.130		
2,700.0	2,489.5	2,708.6	2,529.9	20.4	18.6	-144.06	-414.9	740.1	110.0	83.1	26.87	4.095		
2,800.0	2,576.5	2,808.5	2,618.6	21.5	19.6	-144.13	-438.1	779.7	114.7	86.5	28.24	4.063		
2,900.0	2,663.5	2,908.4	2,707.3	22.6	20.6	-144.20	-461.2	819.2	119.5	89.8	29.61	4.034		
3,000.0	2,750.5	3,008.3	2,796.1	23.7	21.6	-144.26	-484.4	858.8	124.2	93.2	30.98	4.008		
3,100.0	2,837.5	3,108.1	2,884.8	24.7	22.6	-144.32	-507.5	898.4	128.9	96.5	32.35	3.984		
3,200.0	2,924.5	3,208.0	2,973.5	25.8	23.6	-144.37	-530.7	938.0	133.6	99.9	33.73	3.962		
3,300.0	3,011.6	3,307.9	3,062.3	26.9	24.7	-144.42	-553.9	977.6	138.3	103.2	35.10	3.942		
3,400.0	3,098.6	3,407.8	3,151.0	28.0	25.7	-144.47	-577.0	1,017.2	143.1	106.6	36.47	3.923		
3,500.0	3,185.6	3,507.7	3,239.7	29.1	26.7	-144.51	-600.2	1,056.8	147.8	109.9	37.84	3.905		
3,600.0	3,272.6	3,607.6	3,328.5	30.2	27.7	-144.55	-623.3	1,096.4	152.5	113.3	39.22	3.889		
3,700.0	3,359.6	3,707.5	3,417.2	31.3	28.7	-144.59	-646.5	1,136.0	157.2	116.6	40.59	3.874		
3,800.0	3,446.6	3,807.4	3,506.0	32.4	29.7	-144.62	-669.6	1,175.5	162.0	120.0	41.96	3.860		
3,900.0	3,533.6	3,907.2	3,594.7	33.5	30.7	-144.66	-692.8	1,215.1	166.7	123.3	43.34	3.846		
4,000.0	3,620.6	4,007.1	3,683.4	34.5	31.7	-144.69	-716.0	1,254.7	171.4	126.7	44.71	3.834		
4,100.0	3,707.6	4,107.0	3,772.2	35.6	32.7	-144.72	-739.1	1,294.3	176.1	130.0	46.08	3.822		
4,200.0	3,794.6	4,206.9	3,860.9	36.7	33.7	-144.75	-762.3	1,333.9	180.9	133.4	47.46	3.811		
4,300.0	3,881.6	4,306.8	3,949.6	37.8	34.7	-144.78	-785.4	1,373.5	185.6	136.7	48.83	3.800		
4,400.0	3,968.6	4,406.7	4,038.4	38.9	35.7	-144.80	-808.6	1,413.1	190.3	140.1	50.20	3.791		
4,500.0	4,055.6	4,506.6	4,127.1	40.0	36.7	-144.83	-831.7	1,452.7	195.0	143.4	51.58	3.781		
4,600.0	4,142.6	4,606.5	4,215.8	41.1	37.8	-144.85	-854.9	1,492.3	199.7	146.8	52.95	3.772		
4,700.0	4,229.6	4,706.4	4,304.6	42.2	38.8	-144.87	-878.1	1,531.8	204.5	150.1	54.32	3.764		
4,800.0	4,316.6	4,806.2	4,393.3	43.3	39.8	-144.90	-901.2	1,571.4	209.2	153.5	55.70	3.756		

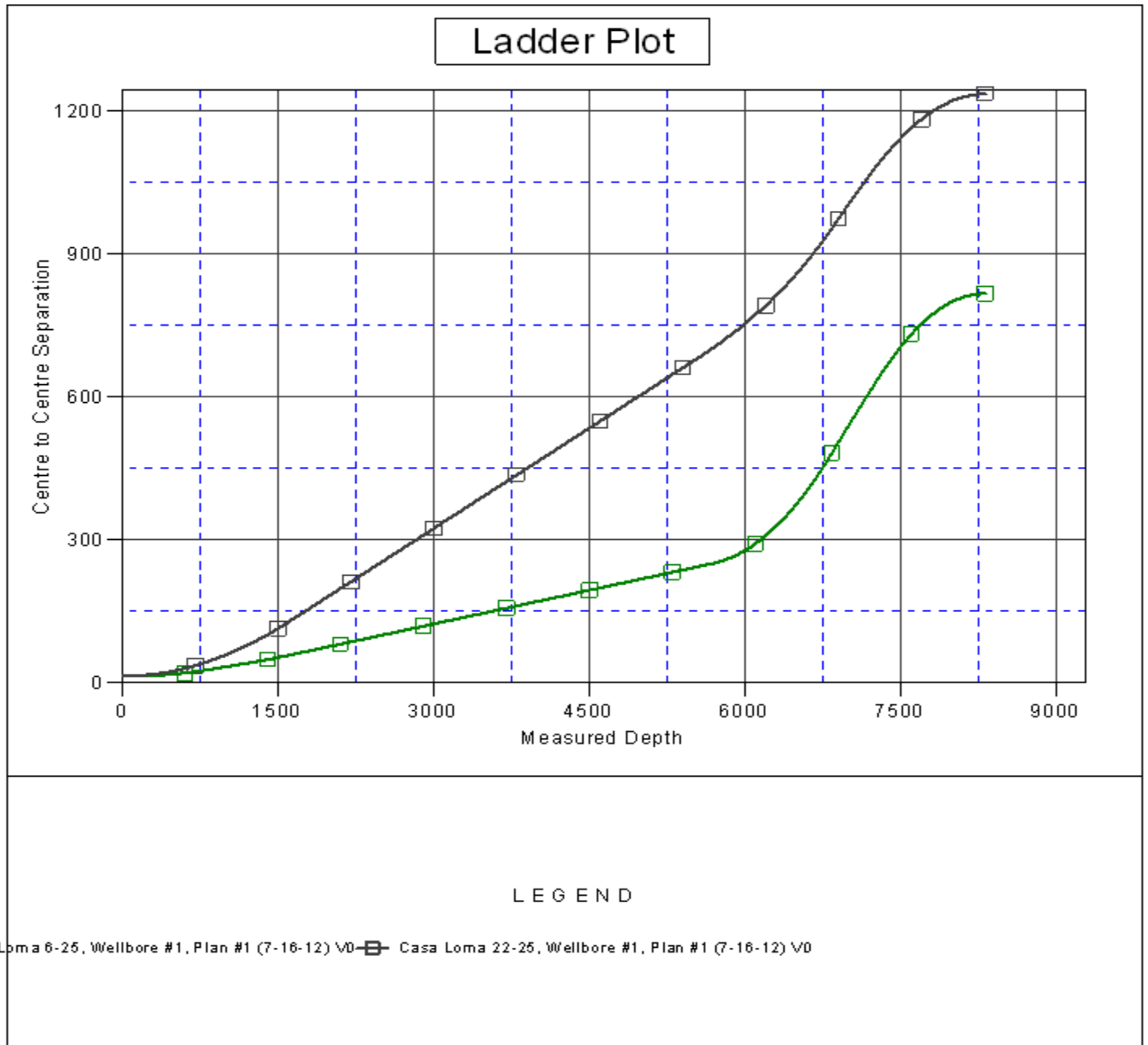
COMPASS 2003.21 Build 46

Company:	BAYSWATER EXPLORATION & PRODUCTION	Local Co-ordinate Reference:	Well Casa Loma 25-25
Project:	SEC.26-T7N-R67W	TVD Reference:	WELL @ 4968.0ft (Original Well Elev)
Reference Site:	Casa Loma 8 Pad Sec.26-T7N-R67W	MD Reference:	WELL @ 4968.0ft (Original Well Elev)
Site Error:	0.0ft	North Reference:	True
Reference Well:	Casa Loma 25-25	Survey Calculation Method:	Minimum Curvature
Well Error:	0.0ft	Output errors are at	2.00 sigma
Reference Wellbore	Wellbore #1	Database:	Landmark
Reference Design:	Plan #1 (7-16-12)	Offset TVD Reference:	Offset Datum

Offset Design Casa Loma 8 Pad Sec.26-T7N-R67W - Casa Loma 6-25 - Wellbore #1 - Plan #1 (7-16-12)													Offset Site Error:	0.0 ft
Survey Program: 0-MWD													Offset Well Error:	0.0 ft
Measured Depth (ft)	Vertical Depth (ft)	Measured Depth (ft)	Vertical Depth (ft)	Reference	Offset	Semi Major Axis	Highside Toolface (°)	Offset Wellbore Centre +N/-S (ft)	Offset Wellbore Centre +E/-W (ft)	Between Centres (ft)	Between Ellipses (ft)	Minimum Separation (ft)	Separation Factor	Warning
4,900.0	4,403.7	4,906.1	4,482.1	44.4	40.8	-144.92	-144.92	-924.4	1,611.0	213.9	156.8	57.07	3.748	
5,000.0	4,490.7	5,006.0	4,570.8	45.4	41.8	-144.94	-144.94	-947.5	1,650.6	218.6	160.2	58.44	3.741	
5,100.0	4,577.7	5,105.9	4,659.5	46.5	42.8	-144.95	-144.95	-970.7	1,690.2	223.4	163.5	59.82	3.734	
5,200.0	4,664.7	5,205.8	4,748.3	47.6	43.8	-144.97	-144.97	-993.8	1,729.8	228.1	166.9	61.19	3.727	
5,300.0	4,751.7	5,305.7	4,837.0	48.7	44.8	-144.99	-144.99	-1,017.0	1,769.4	232.8	170.2	62.57	3.721	
5,400.0	4,838.7	5,405.6	4,925.7	49.8	45.8	-145.01	-145.01	-1,040.2	1,809.0	237.5	173.6	63.94	3.715	
5,500.0	4,925.7	5,505.5	5,014.5	50.9	46.8	-145.02	-145.02	-1,063.3	1,848.5	242.3	176.9	65.31	3.709	
5,600.0	5,012.7	5,605.4	5,103.2	52.0	47.8	-145.04	-145.04	-1,086.5	1,888.1	247.0	180.3	66.69	3.704	
5,700.0	5,099.7	5,704.7	5,191.5	53.1	48.8	-145.05	-145.05	-1,109.5	1,927.5	251.7	183.7	68.05	3.699 SF	
5,800.0	5,186.7	5,800.0	5,277.0	54.2	49.6	-145.32	-145.32	-1,130.8	1,963.9	257.9	188.9	69.00	3.738	
5,900.0	5,273.7	5,890.7	5,359.6	55.3	50.2	-145.95	-145.95	-1,149.7	1,996.2	266.7	197.2	69.49	3.838	
6,000.0	5,360.7	5,982.9	5,444.8	56.4	50.8	-146.91	-146.91	-1,167.5	2,026.7	278.2	208.6	69.56	3.999	
6,100.0	5,447.7	6,074.3	5,530.2	57.5	51.4	-148.12	-148.12	-1,183.8	2,054.5	292.3	223.0	69.27	4.220	
6,200.0	5,534.7	6,164.6	5,615.7	58.5	51.9	-149.52	-149.52	-1,198.6	2,079.8	309.2	240.5	68.70	4.501	
6,300.0	5,621.7	6,253.9	5,701.0	59.6	52.4	-151.03	-151.03	-1,211.8	2,102.4	328.9	261.0	67.92	4.842	
6,400.0	5,708.8	6,341.8	5,785.8	60.7	52.8	-152.59	-152.59	-1,223.5	2,122.5	351.4	284.4	67.01	5.244	
6,500.0	5,795.8	6,428.3	5,869.9	61.8	53.1	-154.16	-154.16	-1,233.8	2,140.0	376.8	310.7	66.03	5.706	
6,600.0	5,882.8	6,513.3	5,953.0	62.9	53.4	-155.69	-155.69	-1,242.6	2,155.0	405.0	340.0	65.06	6.226	
6,700.0	5,969.8	6,600.0	6,038.4	64.0	53.7	-157.22	-157.22	-1,250.3	2,168.2	436.1	372.0	64.05	6.808	
6,800.0	6,056.8	6,678.1	6,115.7	65.1	53.9	-158.56	-158.56	-1,256.1	2,178.2	469.9	406.7	63.23	7.432	
6,835.7	6,087.8	6,706.8	6,144.1	65.5	53.9	-159.03	-159.03	-1,258.0	2,181.4	482.6	419.7	62.94	7.669	
6,900.0	6,144.1	6,758.1	6,195.1	66.1	54.0	-160.01	-160.01	-1,261.0	2,186.5	505.8	443.5	62.30	8.119	
7,000.0	6,233.0	6,837.4	6,274.0	66.9	54.2	-161.37	-161.37	-1,264.7	2,192.8	541.5	480.1	61.43	8.815	
7,100.0	6,323.5	6,916.0	6,352.5	67.7	54.3	-162.55	-162.55	-1,267.3	2,197.3	576.7	516.0	60.70	9.501	
7,200.0	6,415.4	7,000.0	6,436.4	68.4	54.4	-163.65	-163.65	-1,268.8	2,199.9	611.4	551.4	60.00	10.190	
7,300.0	6,508.6	7,073.2	6,509.6	69.0	54.4	-164.52	-164.52	-1,269.2	2,200.5	645.4	586.0	59.46	10.855	
7,400.0	6,603.0	7,167.6	6,604.0	69.6	54.5	-165.43	-165.43	-1,269.2	2,200.5	677.4	618.5	58.84	11.511	
7,500.0	6,698.5	7,263.1	6,699.5	70.1	54.5	-166.18	-166.18	-1,269.2	2,200.5	706.2	647.9	58.34	12.105	
7,600.0	6,794.9	7,359.5	6,795.9	70.5	54.6	-166.80	-166.80	-1,269.2	2,200.5	731.8	673.9	57.91	12.638	
7,700.0	6,892.3	7,456.9	6,893.3	70.9	54.6	-167.29	-167.29	-1,269.2	2,200.5	754.2	696.7	57.52	13.112	
7,800.0	6,990.3	7,555.0	6,991.3	71.2	54.7	-167.69	-167.69	-1,269.2	2,200.5	773.2	716.1	57.16	13.528	
7,900.0	7,089.0	7,653.6	7,090.0	71.5	54.7	-168.01	-168.01	-1,269.2	2,200.5	789.0	732.1	56.80	13.889	
8,000.0	7,188.2	7,752.8	7,189.2	71.7	54.8	-168.25	-168.25	-1,269.2	2,200.5	801.3	744.8	56.45	14.194	
8,100.0	7,287.8	7,852.4	7,288.8	71.9	54.8	-168.42	-168.42	-1,269.2	2,200.5	810.3	754.2	56.10	14.443	
8,200.0	7,387.6	7,952.3	7,388.6	72.0	54.9	-168.52	-168.52	-1,269.2	2,200.5	815.8	760.1	55.74	14.637	
8,300.0	7,487.6	8,052.2	7,488.6	72.1	55.0	-168.56	-168.56	-1,269.2	2,200.5	817.9	762.6	55.37	14.773	
8,312.4	7,500.0	8,058.6	7,495.0	72.1	55.0	-44.92	-44.92	-1,269.2	2,200.5	818.0	762.7	55.32	14.788	
8,317.4	7,505.0	8,058.6	7,495.0	72.1	55.0	-44.92	-44.92	-1,269.2	2,200.5	818.0	762.7	55.32	14.787	

Company:	BAYSWATER EXPLORATION & PRODUCTION	Local Co-ordinate Reference:	Well Casa Loma 25-25
Project:	SEC.26-T7N-R67W	TVD Reference:	WELL @ 4968.0ft (Original Well Elev)
Reference Site:	Casa Loma 8 Pad Sec.26-T7N-R67W	MD Reference:	WELL @ 4968.0ft (Original Well Elev)
Site Error:	0.0ft	North Reference:	True
Reference Well:	Casa Loma 25-25	Survey Calculation Method:	Minimum Curvature
Well Error:	0.0ft	Output errors are at	2.00 sigma
Reference Wellbore	Wellbore #1	Database:	Landmark
Reference Design:	Plan #1 (7-16-12)	Offset TVD Reference:	Offset Datum

Reference Depths are relative to WELL @ 4968.0ft (Original Well Elev) Coordinates are relative to: Casa Loma 25-25
Offset Depths are relative to Offset Datum Coordinate System is US State Plane 1983, Colorado Northern Zone
Central Meridian is -105.500000 ° Grid Convergence at Surface is: 0.42°



Company:	BAYSWATER EXPLORATION & PRODUCTION	Local Co-ordinate Reference:	Well Casa Loma 25-25
Project:	SEC.26-T7N-R67W	TVD Reference:	WELL @ 4968.0ft (Original Well Elev)
Reference Site:	Casa Loma 8 Pad Sec.26-T7N-R67W	MD Reference:	WELL @ 4968.0ft (Original Well Elev)
Site Error:	0.0ft	North Reference:	True
Reference Well:	Casa Loma 25-25	Survey Calculation Method:	Minimum Curvature
Well Error:	0.0ft	Output errors are at	2.00 sigma
Reference Wellbore	Wellbore #1	Database:	Landmark
Reference Design:	Plan #1 (7-16-12)	Offset TVD Reference:	Offset Datum

Reference Depths are relative to WELL @ 4968.0ft (Original Well Elev) Coordinates are relative to: Casa Loma 25-25
Offset Depths are relative to Offset Datum
Central Meridian is -105.500000 °
Coordinate System is US State Plane 1983, Colorado Northern Zone
Grid Convergence at Surface is: 0.42°

