

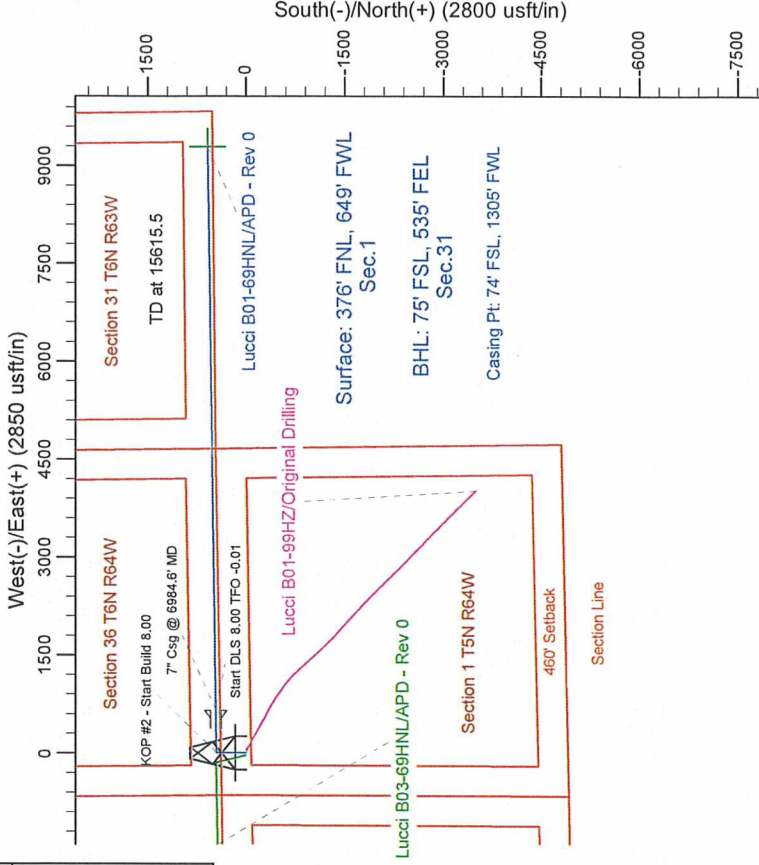
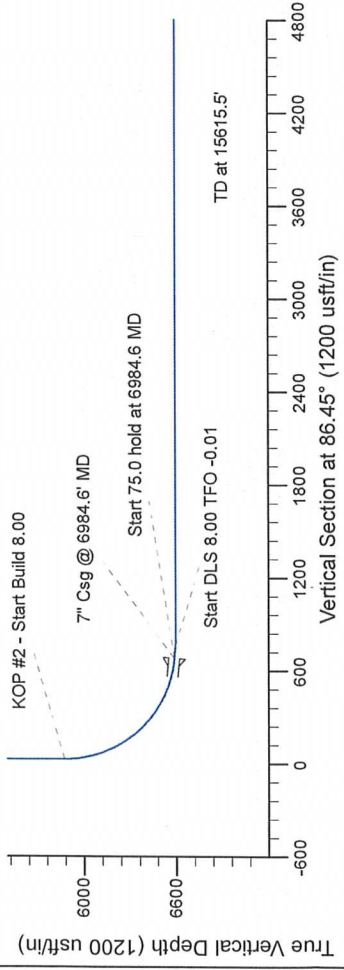
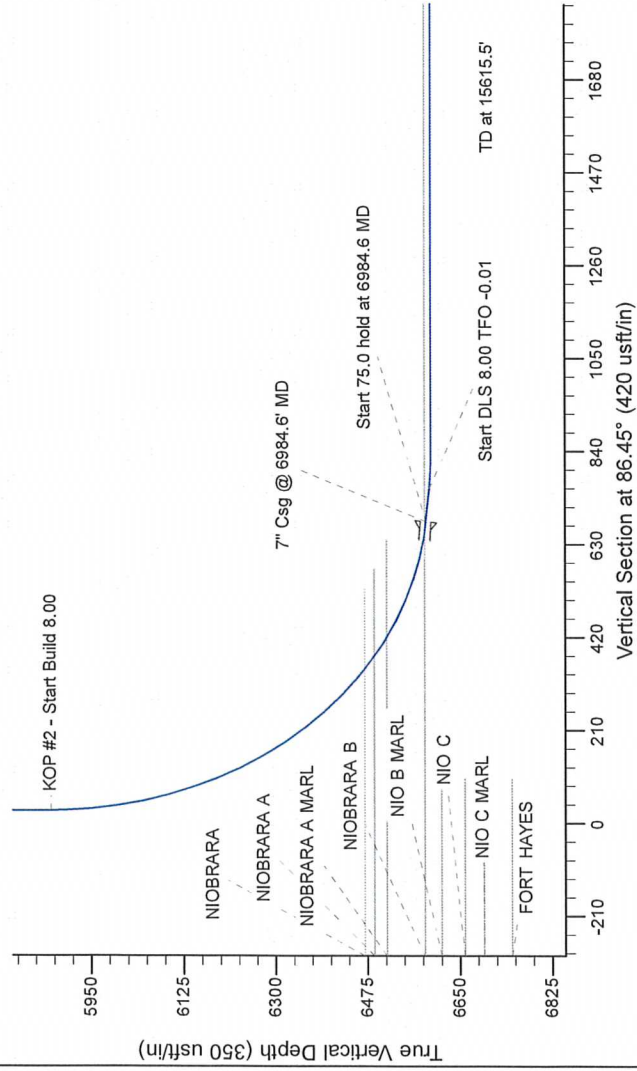
Project: Wattenberg Field
Site: B (Sec.1-T05N-R64W) Weld County, CO
Well: Lucci B01-69HNL
Wellbore: Original Drilling
Design: APD - Rev 0

Northern Region Drilling

Geodetic System: US State Plane 1983
Datum: North American Datum 1983
Ellipsoid: GRS 1980
Zone: Colorado Northern Zone
System Datum: Mean Sea Level

SECTION DETAILS

Sec	MD	Inc	Azi	TVD	+N/-S	+E/-W	Dleg	TFace	VSect	Target
1	1800.0	0.00	0.00	1800.0	0.0	0.0	0.00	0.00	0.0	0.0
2	2360.7	14.02	0.00	2355.1	68.2	0.0	2.50	0.00	4.2	0.0
3	3659.1	0.00	0.00	3614.9	382.8	0.0	0.00	0.00	23.7	0.0
4	4219.8	0.00	0.00	4170.0	451.0	0.0	2.50	180.00	27.9	0.0
5	5922.1	0.00	0.00	5872.3	451.0	0.0	0.00	0.00	27.9	0.0
6	6984.6	85.00	89.23	6585.8	459.8	653.7	8.00	89.23	680.9	0.0
7	7059.6	85.00	89.23	6592.3	460.8	728.4	8.00	0.00	755.6	0.0
8	7122.1	90.00	89.23	6595.0	461.6	780.8	8.00	-0.01	817.9	0.0
9	15615.5	90.00	89.23	6595.0	575.9	9283.4	0.00	0.00	9301.3	0.0



T G M

Azimuths to Grid North
True North: -0.64°
Magnetic North: 7.86°

Magnetic Field
Strength: 53067.5nT
Dip Angle: 67.09°
Date: 9/26/2012
Model: IGRF200510

WELL DETAILS: Lucci B01-69HNL		
Ground Level: 4617.0	Latitude	Longitude
Northing 1402732.04	Easting 3276831.22	40.434640 -104.505500
Plan: APD - Rev 0 (Lucci B01-69HNL/Original Drilling)		
Created By: Carrie Willers	Date: 18/05, October 01 2012	
Checked: _____	Date: _____	
Reviewed: _____	Date: _____	
Approved: _____	Date: _____	