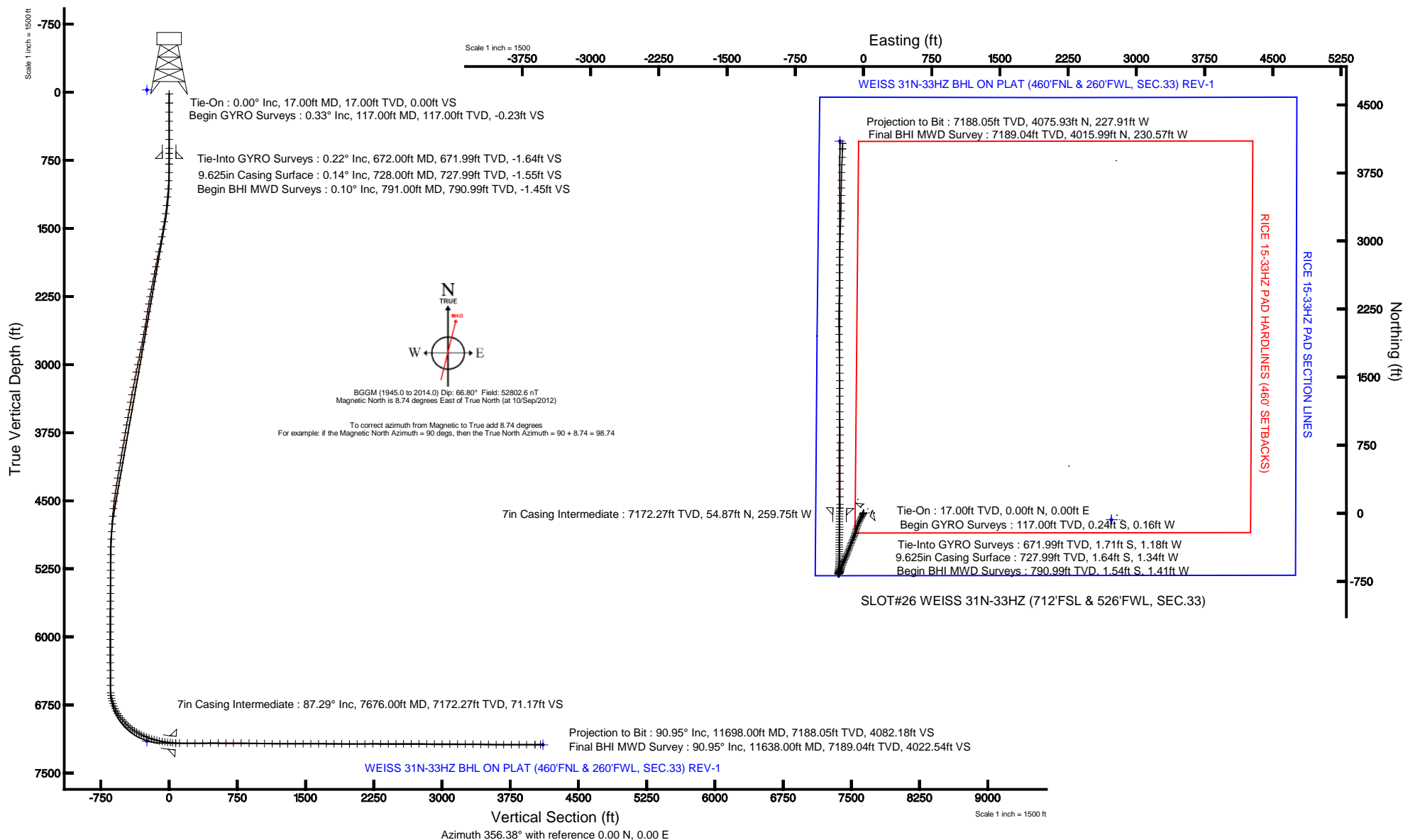


# KERR-MCGEE OIL & GAS ONSHORE LP

Location: COLORADO Slot: SLOT#26 WEISS 31N-33HZ (712'FSL & 526'FWL, SEC.33)  
Field: WELD COUNTY (KERR MCGEE) Well: WEISS 31N-33HZ  
Facility: SEC.33-T3N-R66W Wellbore: WEISS 31N-33HZ PWB

Plot reference wellpath is WEISS 31N-33HZ (REV-B.0) PWP

True vertical depths are referenced to XTREME 6 (RKB)	Grid System: NAD83 / Lambert Colorado SP, Northern Zone (501), US feet
Measured depths are referenced to XTREME 6 (RKB)	North Reference: True north
XTREME 6 (RKB) to Mean Sea Level: 4931 feet	Scale: True distance
Mean Sea Level to Mud line (At Slot: SLOT#26 WEISS 31N-33HZ (712'FSL & 526'FWL, SEC.33)): 0 feet	Depths are in feet
Coordinates are in feet referenced to Slot	Created by: augunora on 16/Nov/2012





# Actual Wellpath Report

WEISS 31N-33HZ AWP

Page 1 of 7



## REFERENCE WELLPATH IDENTIFICATION

Operator	KERR-MCGEE OIL & GAS ONSHORE LP	Slot	SLOT#26 WEISS 31N-33HZ (712'FSL & 526'FWL, SEC.33)
Area	COLORADO	Well	WEISS 31N-33HZ
Field	WELD COUNTY (KERR MCGEE)	Wellbore	WEISS 31N-33HZ AWP
Facility	SEC.33-T3N-R66W		

## REPORT SETUP INFORMATION

Projection System	NAD83 / Lambert Colorado SP, Northern Zone (501), US feet	Software System	WellArchitect® 3.0.0
North Reference	True	User	Augunora
Scale	0.999958	Report Generated	16/Nov/2012 at 12:32
Convergence at slot	0.46° East	Database/Source file	WA_ANADARKO/WEISS_31N-33HZ_AWP.xml

## WELLPATH LOCATION

	Local coordinates		Grid coordinates		Geographic coordinates	
	North[ft]	East[ft]	Easting[US ft]	Northing[US ft]	Latitude	Longitude
Slot Location	73.41	-2725.65	3198463.85	1307810.96	40°10'34.158"N	104°47'23.089"W
Facility Reference Pt			3201189.88	1307759.68	40°10'33.434"N	104°46'47.975"W
Field Reference Pt			3197771.84	1268891.29	40°04'09.600"N	104°47'36.000"W

## WELLPATH DATUM

Calculation method	Minimum curvature	XTREME 6 (RKB) to Facility Vertical Datum
Horizontal Reference Pt	Slot	XTREME 6 (RKB) to Mean Sea Level
Vertical Reference Pt	XTREME 6 (RKB)	XTREME 6 (RKB) to Mud Line at Slot (SLOT#26 WEISS 31N-33HZ (712'FSL & 526'FWL, !
MD Reference Pt	XTREME 6 (RKB)	Section Origin
Field Vertical Reference	Mean Sea Level	Section Azimuth



# Actual Wellpath Report

WEISS 31N-33HZ AWP

Page 2 of 7



## REFERENCE WELLPATH IDENTIFICATION

Operator	KERR-MCGEE OIL & GAS ONSHORE LP	Slot	SLOT#26 WEISS 31N-33HZ (712'FSL & 526'FWL, SEC.33)
Area	COLORADO	Well	WEISS 31N-33HZ
Field	WELD COUNTY (KERR MCGEE)	Wellbore	WEISS 31N-33HZ AWP
Facility	SEC.33-T3N-R66W		

## WELLPATH DATA (160 stations) † = interpolated/extrapolated station

MD [ft]	Inclination [°]	Azimuth [°]	TVD [ft]	Vert Sect [ft]	North [ft]	East [ft]	Latitude	Longitude	DLS [°/100ft]	Comments
0.00†	0.000	214.020	0.00	0.00	0.00	0.00	40°10'34.158"N	104°47'23.089"W	0.00	
17.00	0.000	214.020	17.00	0.00	0.00	0.00	40°10'34.158"N	104°47'23.089"W	0.00	Tie-On
117.00	0.330	214.020	117.00	-0.23	-0.24	-0.16	40°10'34.156"N	104°47'23.091"W	0.33	Begin GYRO Surveys
217.00	0.400	207.530	217.00	-0.76	-0.79	-0.48	40°10'34.150"N	104°47'23.095"W	0.08	
317.00	0.250	179.520	317.00	-1.28	-1.31	-0.64	40°10'34.145"N	104°47'23.097"W	0.21	
417.00	0.140	187.400	417.00	-1.61	-1.65	-0.66	40°10'34.142"N	104°47'23.097"W	0.11	
517.00	0.080	248.350	517.00	-1.76	-1.80	-0.74	40°10'34.140"N	104°47'23.099"W	0.12	
617.00	0.210	286.090	616.99	-1.72	-1.78	-0.98	40°10'34.140"N	104°47'23.102"W	0.15	
672.00	0.220	288.450	671.99	-1.65	-1.71	-1.18	40°10'34.141"N	104°47'23.104"W	0.02	Tie-Into GYRO Surveys
791.00	0.100	351.110	790.99	-1.46	-1.54	-1.41	40°10'34.143"N	104°47'23.107"W	0.16	Begin BHI MWD Surveys
882.00	1.730	213.180	881.98	-2.49	-2.61	-2.17	40°10'34.132"N	104°47'23.117"W	1.98	
972.00	3.040	204.950	971.90	-5.68	-5.91	-3.92	40°10'34.100"N	104°47'23.140"W	1.50	
1064.00	4.640	203.990	1063.69	-11.14	-11.52	-6.46	40°10'34.044"N	104°47'23.172"W	1.74	
1155.00	5.970	203.000	1154.30	-18.67	-19.24	-9.81	40°10'33.968"N	104°47'23.215"W	1.46	
1247.00	7.410	204.130	1245.67	-28.23	-29.06	-14.11	40°10'33.871"N	104°47'23.271"W	1.57	
1338.00	9.760	208.110	1335.65	-40.03	-41.22	-20.14	40°10'33.751"N	104°47'23.348"W	2.66	
1429.00	10.820	205.680	1425.18	-54.10	-55.72	-27.48	40°10'33.607"N	104°47'23.443"W	1.26	
1514.00	10.620	204.780	1508.70	-68.01	-70.03	-34.22	40°10'33.466"N	104°47'23.530"W	0.31	
1597.00	11.730	208.010	1590.12	-81.98	-84.42	-41.38	40°10'33.324"N	104°47'23.622"W	1.53	
1680.00	12.480	204.740	1671.28	-97.12	-100.01	-49.10	40°10'33.170"N	104°47'23.722"W	1.22	
1766.00	12.920	201.240	1755.18	-114.08	-117.41	-56.47	40°10'32.998"N	104°47'23.817"W	1.03	
1851.00	12.630	200.530	1838.07	-131.24	-134.97	-63.17	40°10'32.824"N	104°47'23.903"W	0.39	
1936.00	12.320	200.380	1921.06	-148.05	-152.18	-69.59	40°10'32.654"N	104°47'23.986"W	0.37	
2019.00	11.870	199.780	2002.22	-164.03	-168.51	-75.56	40°10'32.493"N	104°47'24.062"W	0.56	
2104.00	11.610	197.580	2085.44	-180.07	-184.89	-81.10	40°10'32.331"N	104°47'24.134"W	0.61	
2189.00	11.200	195.840	2168.77	-195.87	-200.99	-85.94	40°10'32.172"N	104°47'24.196"W	0.63	
2273.00	10.490	193.450	2251.27	-210.91	-216.27	-89.95	40°10'32.021"N	104°47'24.248"W	1.00	
2356.00	10.430	199.080	2332.89	-225.10	-230.72	-94.16	40°10'31.878"N	104°47'24.302"W	1.23	
2442.00	9.920	196.700	2417.54	-239.27	-245.17	-98.83	40°10'31.735"N	104°47'24.362"W	0.77	
2527.00	10.110	203.950	2501.24	-252.80	-259.00	-103.97	40°10'31.599"N	104°47'24.428"W	1.50	
2612.00	11.030	205.870	2584.80	-266.54	-273.14	-110.54	40°10'31.459"N	104°47'24.513"W	1.16	
2697.00	12.150	202.920	2668.07	-281.68	-288.69	-117.57	40°10'31.305"N	104°47'24.604"W	1.49	
2782.00	11.850	201.900	2751.21	-297.61	-305.03	-124.31	40°10'31.144"N	104°47'24.690"W	0.43	
2868.00	12.180	201.970	2835.33	-313.82	-321.64	-131.00	40°10'30.980"N	104°47'24.777"W	0.38	
2953.00	12.400	201.180	2918.38	-330.25	-338.46	-137.65	40°10'30.813"N	104°47'24.862"W	0.33	
3038.00	12.390	201.130	3001.40	-346.87	-355.48	-144.24	40°10'30.645"N	104°47'24.947"W	0.02	
3122.00	12.430	200.570	3083.43	-363.36	-372.35	-150.66	40°10'30.478"N	104°47'25.030"W	0.15	
3207.00	11.830	200.150	3166.54	-379.73	-389.09	-156.88	40°10'30.313"N	104°47'25.110"W	0.71	
3293.00	11.730	201.920	3250.72	-395.74	-405.48	-163.18	40°10'30.151"N	104°47'25.191"W	0.44	
3378.00	11.290	201.580	3334.02	-411.11	-421.23	-169.46	40°10'29.995"N	104°47'25.272"W	0.52	
3461.00	11.350	202.070	3415.40	-425.88	-436.35	-175.52	40°10'29.846"N	104°47'25.350"W	0.14	
3546.00	10.560	201.190	3498.85	-440.53	-451.37	-181.48	40°10'29.698"N	104°47'25.427"W	0.95	
3631.00	11.220	201.590	3582.32	-455.13	-466.32	-187.34	40°10'29.550"N	104°47'25.502"W	0.78	
3717.00	10.300	201.670	3666.81	-469.71	-481.25	-193.25	40°10'29.402"N	104°47'25.579"W	1.07	
3802.00	10.870	203.720	3750.36	-483.75	-495.65	-199.28	40°10'29.260"N	104°47'25.656"W	0.80	



# Actual Wellpath Report

WEISS 31N-33HZ AWP

Page 3 of 7



## REFERENCE WELLPATH IDENTIFICATION

Operator	KERR-MCGEE OIL & GAS ONSHORE LP	Slot	SLOT#26 WEISS 31N-33HZ (712'FSL & 526'FWL, SEC.33)
Area	COLORADO	Well	WEISS 31N-33HZ
Field	WELD COUNTY (KERR MCGEE)	Wellbore	WEISS 31N-33HZ AWP
Facility	SEC.33-T3N-R66W		

## WELLPATH DATA (160 stations)

MD [ft]	Inclination [°]	Azimuth [°]	TVD [ft]	Vert Sect [ft]	North [ft]	East [ft]	Latitude	Longitude	DLS [°/100ft]	Comments
3887.00	10.600	204.380	3833.87	-497.82	-510.10	-205.74	40°10'29.117"N	104°47'25.739"W	0.35	
3972.00	11.180	204.880	3917.34	-512.02	-524.70	-212.43	40°10'28.973"N	104°47'25.826"W	0.69	
4057.00	10.990	204.990	4000.76	-526.43	-539.52	-219.32	40°10'28.826"N	104°47'25.914"W	0.22	
4142.00	10.290	204.580	4084.29	-540.29	-553.77	-225.90	40°10'28.686"N	104°47'25.999"W	0.83	
4227.00	10.900	200.160	4167.85	-554.39	-568.22	-231.83	40°10'28.543"N	104°47'26.076"W	1.19	
4312.00	10.340	198.720	4251.39	-568.84	-582.98	-237.05	40°10'28.397"N	104°47'26.143"W	0.73	
4397.00	9.510	196.490	4335.12	-582.53	-596.94	-241.49	40°10'28.259"N	104°47'26.200"W	1.08	
4482.00	9.170	196.760	4418.99	-595.51	-610.16	-245.43	40°10'28.128"N	104°47'26.251"W	0.40	
4567.00	7.310	195.110	4503.11	-607.01	-621.87	-248.80	40°10'28.013"N	104°47'26.294"W	2.21	
4651.00	6.020	200.590	4586.54	-616.11	-631.15	-251.74	40°10'27.921"N	104°47'26.332"W	1.71	
4737.00	5.690	200.940	4672.09	-624.13	-639.35	-254.85	40°10'27.840"N	104°47'26.372"W	0.39	
4822.00	4.110	201.500	4756.78	-630.74	-646.12	-257.47	40°10'27.773"N	104°47'26.406"W	1.86	
4908.00	2.940	204.190	4842.61	-635.50	-651.00	-259.50	40°10'27.725"N	104°47'26.432"W	1.37	
4991.00	2.480	205.470	4925.52	-638.97	-654.57	-261.15	40°10'27.690"N	104°47'26.453"W	0.56	
5076.00	1.450	204.890	5010.47	-641.53	-657.20	-262.39	40°10'27.663"N	104°47'26.469"W	1.21	
5161.00	1.260	206.630	5095.45	-643.29	-659.01	-263.26	40°10'27.646"N	104°47'26.480"W	0.23	
5247.00	1.200	208.580	5181.43	-644.87	-660.65	-264.12	40°10'27.629"N	104°47'26.492"W	0.09	
5332.00	1.140	209.710	5266.41	-646.34	-662.17	-264.96	40°10'27.614"N	104°47'26.502"W	0.08	
5417.00	0.870	214.790	5351.40	-647.56	-663.43	-265.75	40°10'27.602"N	104°47'26.513"W	0.33	
5503.00	0.740	219.110	5437.39	-648.48	-664.40	-266.47	40°10'27.592"N	104°47'26.522"W	0.17	
5588.00	0.820	208.550	5522.38	-649.41	-665.36	-267.11	40°10'27.583"N	104°47'26.530"W	0.19	
5673.00	0.960	219.130	5607.37	-650.45	-666.44	-267.85	40°10'27.572"N	104°47'26.540"W	0.25	
5758.00	1.100	232.180	5692.36	-651.44	-667.50	-268.94	40°10'27.562"N	104°47'26.554"W	0.32	
5844.00	0.940	236.700	5778.34	-652.26	-668.39	-270.19	40°10'27.553"N	104°47'26.570"W	0.21	
5928.00	1.060	241.060	5862.33	-652.95	-669.14	-271.44	40°10'27.545"N	104°47'26.586"W	0.17	
6013.00	1.240	250.100	5947.31	-653.55	-669.84	-273.00	40°10'27.539"N	104°47'26.606"W	0.30	
6097.00	0.810	296.850	6031.30	-653.52	-669.88	-274.38	40°10'27.538"N	104°47'26.624"W	1.08	
6181.00	0.590	307.810	6115.29	-652.93	-669.35	-275.25	40°10'27.543"N	104°47'26.635"W	0.31	
6266.00	0.460	289.900	6200.29	-652.51	-668.96	-275.92	40°10'27.547"N	104°47'26.643"W	0.24	
6351.00	0.730	5.530	6285.29	-651.84	-668.31	-276.19	40°10'27.554"N	104°47'26.647"W	0.89	
6436.00	0.650	333.470	6370.28	-650.87	-667.34	-276.35	40°10'27.563"N	104°47'26.649"W	0.46	
6521.00	0.790	296.000	6455.27	-650.14	-666.65	-277.09	40°10'27.570"N	104°47'26.659"W	0.57	
6603.00	0.870	273.890	6537.27	-649.79	-666.36	-278.22	40°10'27.573"N	104°47'26.673"W	0.40	
6685.00	4.570	8.470	6619.18	-646.51	-663.08	-278.36	40°10'27.605"N	104°47'26.675"W	5.76	
6715.00	8.810	9.080	6648.97	-643.09	-659.63	-277.82	40°10'27.640"N	104°47'26.668"W	14.14	
6745.00	12.720	7.720	6678.43	-637.60	-654.09	-277.02	40°10'27.694"N	104°47'26.658"W	13.06	
6775.00	16.280	8.740	6707.47	-630.24	-646.65	-275.93	40°10'27.768"N	104°47'26.644"W	11.90	
6805.00	19.620	8.870	6736.01	-621.20	-637.52	-274.52	40°10'27.858"N	104°47'26.625"W	11.13	
6835.00	22.580	7.720	6763.99	-610.62	-626.83	-272.97	40°10'27.964"N	104°47'26.605"W	9.96	
6865.00	24.770	5.740	6791.47	-598.75	-614.87	-271.56	40°10'28.082"N	104°47'26.587"W	7.77	
6895.00	28.150	4.640	6818.32	-585.53	-601.56	-270.36	40°10'28.213"N	104°47'26.572"W	11.38	
6925.00	30.960	3.750	6844.41	-570.86	-586.80	-269.28	40°10'28.359"N	104°47'26.558"W	9.48	
6955.00	33.930	3.100	6869.73	-554.87	-570.74	-268.33	40°10'28.518"N	104°47'26.546"W	9.97	
6985.00	37.110	1.680	6894.14	-537.53	-553.33	-267.61	40°10'28.690"N	104°47'26.536"W	10.95	
7015.00	40.030	0.760	6917.60	-518.88	-534.63	-267.21	40°10'28.875"N	104°47'26.531"W	9.92	



# Actual Wellpath Report

WEISS 31N-33HZ AWP

Page 4 of 7



## REFERENCE WELLPATH IDENTIFICATION

Operator	KERR-MCGEE OIL & GAS ONSHORE LP	Slot	SLOT#26 WEISS 31N-33HZ (712'FSL & 526'FWL, SEC.33)
Area	COLORADO	Well	WEISS 31N-33HZ
Field	WELD COUNTY (KERR MCGEE)	Wellbore	WEISS 31N-33HZ AWB
Facility	SEC.33-T3N-R66W		

## WELLPATH DATA (160 stations) † = interpolated/extrapolated station

MD [ft]	Inclination [°]	Azimuth [°]	TVD [ft]	Vert Sect [ft]	North [ft]	East [ft]	Latitude	Longitude	DLS [°/100ft]	Comments
7045.00	42.840	0.400	6940.09	-499.07	-514.78	-267.02	40°10'29.071"N	104°47'26.529"W	9.40	
7075.00	45.600	0.200	6961.58	-478.19	-493.86	-266.91	40°10'29.278"N	104°47'26.527"W	9.21	
7105.00	47.970	0.210	6982.12	-456.37	-472.00	-266.83	40°10'29.494"N	104°47'26.526"W	7.90	
7135.00	50.910	0.060	7001.63	-433.62	-449.21	-266.78	40°10'29.719"N	104°47'26.526"W	9.81	
7165.00	53.680	359.950	7019.98	-409.92	-425.48	-266.77	40°10'29.953"N	104°47'26.526"W	9.24	
7195.00	56.660	0.270	7037.11	-385.34	-400.85	-266.73	40°10'30.197"N	104°47'26.525"W	9.97	
7225.00	59.970	0.680	7052.86	-359.87	-375.33	-266.51	40°10'30.449"N	104°47'26.522"W	11.09	
7255.00	61.990	0.750	7067.42	-333.69	-349.10	-266.18	40°10'30.708"N	104°47'26.518"W	6.74	
7285.00	64.370	1.150	7080.95	-306.99	-322.33	-265.74	40°10'30.973"N	104°47'26.512"W	8.02	
7315.00	66.490	1.480	7093.42	-279.80	-295.06	-265.11	40°10'31.242"N	104°47'26.504"W	7.14	
7345.00	68.240	0.580	7104.97	-252.18	-267.37	-264.62	40°10'31.516"N	104°47'26.498"W	6.46	
7375.00	68.820	359.950	7115.95	-224.32	-239.46	-264.49	40°10'31.792"N	104°47'26.496"W	2.75	
7405.00	70.560	359.800	7126.36	-196.22	-211.32	-264.55	40°10'32.070"N	104°47'26.497"W	5.82	
7435.00	73.440	359.590	7135.63	-167.73	-182.79	-264.70	40°10'32.352"N	104°47'26.499"W	9.62	
7465.00	76.570	0.490	7143.39	-138.80	-153.82	-264.68	40°10'32.638"N	104°47'26.499"W	10.83	
7495.00	78.670	0.740	7149.83	-109.57	-124.52	-264.37	40°10'32.927"N	104°47'26.495"W	7.05	
7525.00	80.610	0.590	7155.22	-80.13	-95.01	-264.02	40°10'33.219"N	104°47'26.490"W	6.49	
7555.00	81.830	0.900	7159.80	-50.55	-65.37	-263.64	40°10'33.512"N	104°47'26.485"W	4.19	
7585.00	82.830	1.520	7163.80	-20.91	-35.64	-263.01	40°10'33.806"N	104°47'26.477"W	3.91	
7615.00	83.360	2.560	7167.41	8.75	-5.88	-261.95	40°10'34.100"N	104°47'26.464"W	3.87	
7642.00	85.300	2.280	7170.08	35.49	20.96	-260.81	40°10'34.365"N	104°47'26.449"W	7.26	
7676.00†	87.290	1.307	7172.27	69.29	54.87	-259.75	40°10'34.700"N	104°47'26.435"W	6.51	7" Casing Point
7718.00	89.750	0.110	7173.36	111.17	96.85	-259.23	40°10'35.115"N	104°47'26.429"W	6.51	
7803.00	89.690	359.720	7173.77	196.05	181.85	-259.36	40°10'35.955"N	104°47'26.430"W	0.46	
7888.00	89.780	0.280	7174.17	280.91	266.85	-259.36	40°10'36.795"N	104°47'26.430"W	0.67	
7973.00	90.580	0.330	7173.90	365.75	351.85	-258.91	40°10'37.635"N	104°47'26.425"W	0.94	
8059.00	90.890	0.400	7172.80	451.58	437.84	-258.36	40°10'38.485"N	104°47'26.417"W	0.37	
8143.00	90.030	359.710	7172.12	535.44	521.83	-258.28	40°10'39.315"N	104°47'26.416"W	1.31	
8229.00	90.280	359.860	7171.89	621.32	607.83	-258.60	40°10'40.165"N	104°47'26.421"W	0.34	
8313.00	90.150	0.090	7171.58	705.19	691.83	-258.64	40°10'40.995"N	104°47'26.421"W	0.31	
8398.00	89.200	359.870	7172.06	790.06	776.83	-258.67	40°10'41.835"N	104°47'26.421"W	1.15	
8484.00	88.920	359.870	7173.47	875.92	862.82	-258.86	40°10'42.684"N	104°47'26.424"W	0.33	
8569.00	88.580	359.420	7175.32	960.80	947.79	-259.39	40°10'43.524"N	104°47'26.431"W	0.66	
8654.00	88.340	359.840	7177.61	1045.66	1032.76	-259.94	40°10'44.364"N	104°47'26.438"W	0.57	
8739.00	89.570	359.710	7179.16	1130.53	1117.75	-260.27	40°10'45.204"N	104°47'26.442"W	1.46	
8825.00	89.910	359.930	7179.55	1216.41	1203.74	-260.54	40°10'46.053"N	104°47'26.446"W	0.47	
8910.00	90.030	359.560	7179.59	1301.30	1288.74	-260.92	40°10'46.893"N	104°47'26.451"W	0.46	
8995.00	90.430	359.880	7179.25	1386.19	1373.74	-261.34	40°10'47.733"N	104°47'26.456"W	0.60	
9080.00	90.280	359.490	7178.72	1471.08	1458.74	-261.80	40°10'48.573"N	104°47'26.462"W	0.49	
9165.00	89.940	359.340	7178.56	1555.99	1543.73	-262.67	40°10'49.413"N	104°47'26.473"W	0.44	
9251.00	89.780	359.680	7178.77	1641.89	1629.73	-263.41	40°10'50.263"N	104°47'26.483"W	0.44	
9336.00	89.450	358.820	7179.34	1726.81	1714.72	-264.52	40°10'51.103"N	104°47'26.497"W	1.08	
9421.00	89.560	358.880	7180.08	1811.76	1799.70	-266.23	40°10'51.943"N	104°47'26.519"W	0.15	
9506.00	89.560	359.280	7180.73	1896.69	1884.69	-267.59	40°10'52.782"N	104°47'26.537"W	0.47	
9591.00	89.560	359.060	7181.38	1981.61	1969.67	-268.82	40°10'53.622"N	104°47'26.552"W	0.26	





# Actual Wellpath Report

WEISS 31N-33HZ AWP

Page 5 of 7



## REFERENCE WELLPATH IDENTIFICATION

Operator	KERR-MCGEE OIL & GAS ONSHORE LP	Slot	SLOT#26 WEISS 31N-33HZ (712'FSL & 526'FWL, SEC.33)
Area	COLORADO	Well	WEISS 31N-33HZ
Field	WELD COUNTY (KERR MCGEE)	Wellbore	WEISS 31N-33HZ AWB
Facility	SEC.33-T3N-R66W		

## WELLPATH DATA (160 stations)

MD [ft]	Inclination [°]	Azimuth [°]	TVD [ft]	Vert Sect [ft]	North [ft]	East [ft]	Latitude	Longitude	DLS [°/100ft]	Comments
9676.00	90.000	358.920	7181.71	2066.55	2054.66	-270.32	40°10'54.462"N	104°47'26.572"W	0.54	
9761.00	90.490	0.440	7181.34	2151.44	2139.66	-270.79	40°10'55.302"N	104°47'26.578"W	1.88	
9847.00	91.220	0.740	7180.06	2237.24	2225.64	-269.91	40°10'56.152"N	104°47'26.566"W	0.92	
9932.00	89.840	1.140	7179.28	2322.01	2310.62	-268.51	40°10'56.992"N	104°47'26.549"W	1.69	
10018.00	90.490	1.370	7179.03	2407.75	2396.60	-266.63	40°10'57.841"N	104°47'26.524"W	0.80	
10103.00	89.530	0.620	7179.01	2492.52	2481.59	-265.15	40°10'58.681"N	104°47'26.505"W	1.43	
10186.00	90.240	1.010	7179.18	2575.32	2564.58	-263.97	40°10'59.501"N	104°47'26.490"W	0.98	
10272.00	89.160	0.010	7179.63	2661.13	2650.57	-263.21	40°11'00.351"N	104°47'26.480"W	1.71	
10357.00	90.000	0.000	7180.25	2746.00	2735.57	-263.20	40°11'01.191"N	104°47'26.480"W	0.99	
10442.00	88.940	1.500	7181.04	2830.79	2820.55	-262.09	40°11'02.031"N	104°47'26.466"W	2.16	
10527.00	89.500	0.820	7182.20	2915.53	2905.53	-260.37	40°11'02.870"N	104°47'26.444"W	1.04	
10613.00	89.660	1.250	7182.83	3001.29	2991.51	-258.82	40°11'03.720"N	104°47'26.424"W	0.53	
10698.00	90.180	1.670	7182.95	3086.01	3076.48	-256.65	40°11'04.560"N	104°47'26.396"W	0.79	
10783.00	89.530	2.540	7183.16	3170.65	3161.42	-253.53	40°11'05.399"N	104°47'26.356"W	1.28	
10868.00	90.280	1.960	7183.30	3255.26	3246.36	-250.19	40°11'06.239"N	104°47'26.313"W	1.12	
10954.00	88.580	1.520	7184.16	3340.93	3332.31	-247.58	40°11'07.088"N	104°47'26.279"W	2.04	
11039.00	88.750	0.690	7186.14	3425.67	3417.27	-245.94	40°11'07.927"N	104°47'26.258"W	1.00	
11124.00	89.230	0.340	7187.64	3510.48	3502.25	-245.18	40°11'08.767"N	104°47'26.248"W	0.70	
11208.00	89.420	1.070	7188.62	3594.28	3586.24	-244.14	40°11'09.597"N	104°47'26.235"W	0.90	
11292.00	89.540	1.270	7189.39	3678.03	3670.22	-242.43	40°11'10.427"N	104°47'26.213"W	0.28	
11376.00	89.810	1.240	7189.86	3761.77	3754.20	-240.59	40°11'11.257"N	104°47'26.189"W	0.32	
11461.00	89.780	2.400	7190.17	3846.45	3839.15	-237.89	40°11'12.097"N	104°47'26.154"W	1.37	
11546.00	90.340	2.270	7190.08	3931.05	3924.08	-234.43	40°11'12.936"N	104°47'26.110"W	0.68	
11638.00	90.950	2.540	7189.04	4022.60	4015.99	-230.57	40°11'13.844"N	104°47'26.060"W	0.73	Final BHI MWD Survey
11698.00	90.950	2.540	7188.05	4082.29	4075.93	-227.91	40°11'14.436"N	104°47'26.026"W	0.00	Projection to Bit

## HOLE & CASING SECTIONS - Ref Wellbore: WEISS 31N-33HZ AWB Ref Wellpath: WEISS 31N-33HZ AWP

String/Diameter	Start MD [ft]	End MD [ft]	Interval [ft]	Start TVD [ft]	End TVD [ft]	Start N/S [ft]	Start E/W [ft]	End N/S [ft]	End E/W [ft]
13.5in Open Hole	17.00	728.00	711.00	17.00	727.99	0.00	0.00	-1.64	-1.34
9.625in Casing Surface	17.00	728.00	711.00	17.00	727.99	0.00	0.00	-1.64	-1.34
8.75in Open Hole	728.00	7687.00	6959.00	727.99	7172.73	-1.64	-1.34	65.86	-259.53
7in Casing Intermediate	17.00	7676.00	7659.00	17.00	7172.27	0.00	0.00	54.87	-259.75
6.125in Open Hole	7676.00	11698.00	4022.00	7172.27	7188.05	54.87	-259.75	4075.93	-227.91



# Actual Wellpath Report

WEISS 31N-33HZ AWP

Page 6 of 7



## REFERENCE WELLPATH IDENTIFICATION

Operator	KERR-MCGEE OIL & GAS ONSHORE LP	Slot	SLOT#26 WEISS 31N-33HZ (712'FSL & 526'FWL, SEC.33)
Area	COLORADO	Well	WEISS 31N-33HZ
Field	WELD COUNTY (KERR MCGEE)	Wellbore	WEISS 31N-33HZ AWB
Facility	SEC.33-T3N-R66W		

## TARGETS

Name	MD [ft]	TVD [ft]	North [ft]	East [ft]	Grid East [US ft]	Grid North [US ft]	Latitude	Longitude	Shape
RICE 15-33HZ PAD SECTION LINES		-27.00	-73.11	2725.66	3201189.88	1307759.68	40°10'33.434"N	104°46'47.975"W	polygon
RICE 15-33HZ PAD HARDLINES (460' SETBACKS)		7151.00	-73.11	2725.66	3201189.88	1307759.68	40°10'33.434"N	104°46'47.975"W	polygon
WEISS 31N-33HZ BHL ON PLAT (460'FNL & 260'FWL, SEC.33) REV-1		7191.00	4101.60	-259.61	3198171.41	1311910.16	40°11'14.690"N	104°47'26.434"W	point

## WELLPATH COMPOSITION - Ref Wellbore: WEISS 31N-33HZ AWB Ref Wellpath: WEISS 31N-33HZ AWP

Start MD [ft]	End MD [ft]	Positional Uncertainty Model	Log Name/Comment	Wellbore
17.00	672.00	Generic gyro - continuous (Standard)	GYRODATA SURVEYS <117-672>	WEISS 31N-33HZ AWB
672.00	7642.00	NaviTrak (MagCorr)	BHI MWD SURVEYS 3/4" HOLE <791-7642>	WEISS 31N-33HZ AWB
7642.00	11638.00	OnTrak (MagCorr)	BHI MWD SURVEYS 6 1/8" HOLE <7718-11638>	WEISS 31N-33HZ AWB
11638.00	11698.00	Blind Drilling (std)	Projection to bit	WEISS 31N-33HZ AWB



# Actual Wellpath Report

WEISS 31N-33HZ AWP

Page 7 of 7



## REFERENCE WELLPATH IDENTIFICATION

Operator	KERR-MCGEE OIL & GAS ONSHORE LP	Slot	SLOT#26 WEISS 31N-33HZ (712'FSL & 526'FWL, SEC.33)
Area	COLORADO	Well	WEISS 31N-33HZ
Field	WELD COUNTY (KERR MCGEE)	Wellbore	WEISS 31N-33HZ AWB
Facility	SEC.33-T3N-R66W		

## WELLPATH COMMENTS

MD [ft]	Inclination [°]	Azimuth [°]	TVD [ft]	Comment
17.00	0.000	214.020	17.00	Tie-On
117.00	0.330	214.020	117.00	Begin GYRO Surveys
672.00	0.220	288.450	671.99	Tie-Into GYRO Surveys
791.00	0.100	351.110	790.99	Begin BHI MWD Surveys
7676.00	87.290	1.307	7172.27	7" Casing Point
11638.00	90.950	2.540	7189.04	Final BHI MWD Survey
11698.00	90.950	2.540	7188.05	Projection to Bit