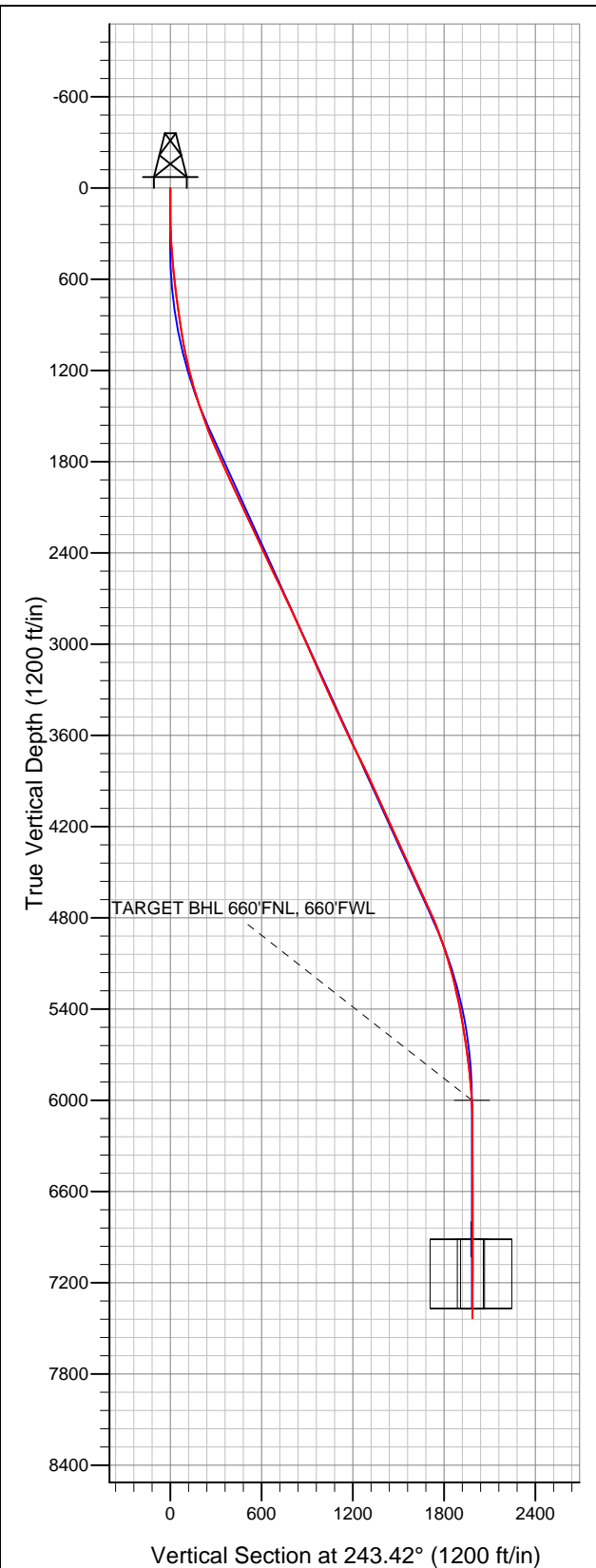


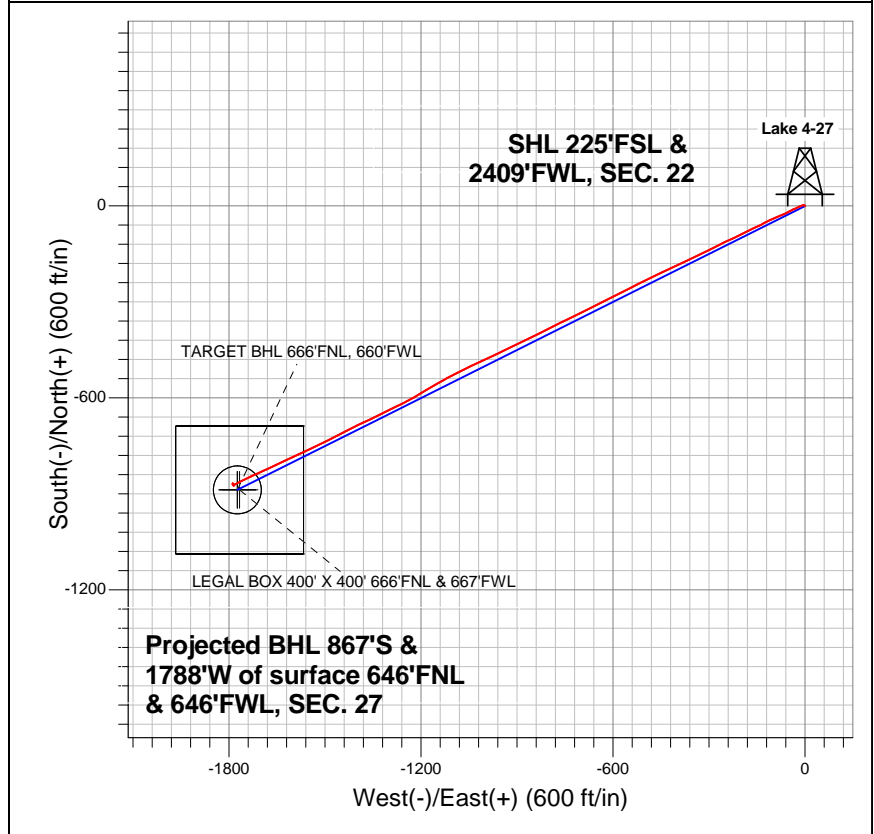
Well Name: Lake 4-27

Surface Location: Lake - Ranchero Pad Sec.22-T7N-R67W
North American Datum 1983 US State Plane 1983Colorado Northern Zone
Ground Elevation: 5004.0

+N/-S	+E/-W	Northing	Easting	Latitude	Longitude	Slot
0.0	0.0	1444921.51	3172234.03	40.553057	-104.880184	
Original Well Elev			WELL @ 5020.0ft (Original Well Elev)			



BAYSWATER EXPLORATION & PRODUCTION



LEGEND

- Wellbore #1
- Lake 4-27, Wellbore #1, Plan #1 (7-16-12) R V0
- Survey #1

Final Survey Plot

Projected Final Survey -
7820'MD & 7434'TVD @ 1987'VS
0.50 deg Inc 68.00 deg AZ

Project: SEC.22-T7N-R67W
Site: Lake - Ranchero Pad Sec.22-T7N-R67W
Well: Lake 4-27
Plan: Wellbore #1



BAYSWATER EXPLORATION & PRODUCTION

SEC.22-T7N-R67W

Lake - Rancho Pad Sec.22-T7N-R67W

Lake 4-27

Wellbore #1

Survey: Survey #1

Standard Survey Report

26 July, 2012

Company:	BAYSWATER EXPLORATION & PRODUCTION	Local Co-ordinate Reference:	Well Lake 4-27
Project:	SEC.22-T7N-R67W	TVD Reference:	WELL @ 5020.0ft (Original Well Elev)
Site:	Lake - Rancho Pad Sec.22-T7N-R67W	MD Reference:	WELL @ 5020.0ft (Original Well Elev)
Well:	Lake 4-27	North Reference:	True
Wellbore:	Wellbore #1	Survey Calculation Method:	Minimum Curvature
Design:	Wellbore #1	Database:	Landmark

Project	SEC.22-T7N-R67W, Weld County, Colorado		
Map System:	US State Plane 1983	System Datum:	Mean Sea Level
Geo Datum:	North American Datum 1983		Using Well Reference Point
Map Zone:	Colorado Northern Zone		Using geodetic scale factor

Site	Lake - Rancho Pad Sec.22-T7N-R67W				
Site Position:		Northing:	1,444,921.99 ft	Latitude:	40.553058
From:	Lat/Long	Easting:	3,172,249.31 ft	Longitude:	-104.880129
Position Uncertainty:	0.0 ft	Slot Radius:	"	Grid Convergence:	0.40 °

Well	Lake 4-27					
Well Position	+N-S	0.0 ft	Northing:	1,444,921.51 ft	Latitude:	40.553057
	+E-W	0.0 ft	Easting:	3,172,234.03 ft	Longitude:	-104.880184
Position Uncertainty		0.0 ft	Wellhead Elevation:	ft	Ground Level:	5,004.0 ft

Wellbore	Wellbore #1				
Magnetics	Model Name	Sample Date	Declination (°)	Dip Angle (°)	Field Strength (nT)
	IGRF2010	7/16/2012	8.79	67.12	53,083

Design	Wellbore #1				
Audit Notes:					
Version:	1.0	Phase:	ACTUAL	Tie On Depth:	0.0
Vertical Section:	Depth From (TVD) (ft)	+N/-S (ft)	+E/-W (ft)	Direction (°)	
	0.0	0.0	0.0	243.42	

Survey Program	Date 7/26/2012			
From (ft)	To (ft)	Survey (Wellbore)	Tool Name	Description
68.0	7,820.0	Survey #1 (Wellbore #1)	MWD	MWD - Standard

Survey									
Measured Depth (ft)	Inclination (°)	Azimuth (°)	Vertical Depth (ft)	+N/-S (ft)	+E/-W (ft)	Vertical Section (ft)	Dogleg Rate (°/100ft)	Build Rate (°/100ft)	Turn Rate (°/100ft)
0.0	0.00	0.00	0.0	0.0	0.0	0.0	0.00	0.00	0.00
68.0	1.00	337.50	68.0	0.5	-0.2	0.0	1.47	1.47	0.00
158.0	1.10	304.30	158.0	1.8	-1.2	0.3	0.68	0.11	-36.89
247.0	1.80	278.70	247.0	2.5	-3.3	1.9	1.05	0.79	-28.76
337.0	2.80	254.40	336.9	2.1	-6.8	5.2	1.53	1.11	-27.00
428.0	4.70	248.20	427.7	0.1	-12.4	11.1	2.13	2.09	-6.81
520.0	5.70	245.60	519.3	-3.2	-20.1	19.4	1.12	1.09	-2.83
611.0	6.30	244.00	609.8	-7.2	-28.7	28.9	0.68	0.66	-1.76
704.0	6.90	243.30	702.2	-12.0	-38.3	39.6	0.65	0.65	-0.75
767.0	7.10	242.60	764.7	-15.5	-45.1	47.3	0.35	0.32	-1.11
800.0	7.60	242.60	797.4	-17.4	-48.9	51.5	1.52	1.52	0.00
894.0	8.50	246.50	890.5	-23.1	-60.8	64.7	1.12	0.96	4.15

Company:	BAYSWATER EXPLORATION & PRODUCTION	Local Co-ordinate Reference:	Well Lake 4-27
Project:	SEC.22-T7N-R67W	TVD Reference:	WELL @ 5020.0ft (Original Well Elev)
Site:	Lake - Ranchero Pad Sec.22-T7N-R67W	MD Reference:	WELL @ 5020.0ft (Original Well Elev)
Well:	Lake 4-27	North Reference:	True
Wellbore:	Wellbore #1	Survey Calculation Method:	Minimum Curvature
Design:	Wellbore #1	Database:	Landmark

Survey									
Measured Depth (ft)	Inclination (°)	Azimuth (°)	Vertical Depth (ft)	+N/-S (ft)	+E/-W (ft)	Vertical Section (ft)	Dogleg Rate (°/100ft)	Build Rate (°/100ft)	Turn Rate (°/100ft)
987.0	9.70	244.90	982.3	-29.1	-74.2	79.4	1.32	1.29	-1.72
1,081.0	11.20	248.20	1,074.8	-35.9	-89.8	96.4	1.72	1.60	3.51
1,175.0	13.30	244.90	1,166.6	-43.9	-108.1	116.3	2.35	2.23	-3.51
1,268.0	14.90	242.40	1,256.8	-53.9	-128.4	138.9	1.84	1.72	-2.69
1,362.0	16.90	244.00	1,347.2	-65.5	-151.4	164.7	2.18	2.13	1.70
1,456.0	18.60	244.70	1,436.8	-77.9	-177.2	193.3	1.82	1.81	0.74
1,549.0	20.00	243.30	1,524.5	-91.4	-204.8	224.1	1.59	1.51	-1.51
1,643.0	21.80	245.30	1,612.3	-105.9	-235.0	257.6	2.06	1.91	2.13
1,737.0	23.20	243.70	1,699.2	-121.4	-267.5	293.5	1.63	1.49	-1.70
1,831.0	24.80	243.70	1,785.1	-138.4	-301.8	331.8	1.70	1.70	0.00
1,924.0	24.40	243.70	1,869.6	-155.5	-336.5	370.5	0.43	-0.43	0.00
2,018.0	24.60	244.60	1,955.2	-172.5	-371.6	409.5	0.45	0.21	0.96
2,112.0	25.00	245.80	2,040.5	-189.0	-407.3	448.9	0.68	0.43	1.28
2,205.0	24.60	244.90	2,124.9	-205.3	-442.8	487.9	0.59	-0.43	-0.97
2,299.0	25.50	243.80	2,210.1	-222.5	-478.7	527.7	1.08	0.96	-1.17
2,393.0	25.10	242.80	2,295.1	-240.6	-514.6	567.8	0.62	-0.43	-1.06
2,486.0	25.60	243.30	2,379.1	-258.6	-550.1	607.6	0.58	0.54	0.54
2,580.0	25.10	243.70	2,464.0	-276.6	-586.1	647.9	0.56	-0.53	0.43
2,674.0	25.50	243.50	2,549.0	-294.5	-622.1	688.1	0.44	0.43	-0.21
2,767.0	26.30	243.10	2,632.7	-312.7	-658.3	728.7	0.88	0.86	-0.43
2,861.0	25.10	243.80	2,717.4	-330.9	-694.8	769.4	1.32	-1.28	0.74
2,955.0	24.00	243.70	2,802.9	-348.2	-729.8	808.5	1.17	-1.17	-0.11
3,049.0	24.10	243.70	2,888.7	-365.2	-764.2	846.8	0.11	0.11	0.00
3,142.0	24.90	243.70	2,973.4	-382.3	-798.7	885.4	0.86	0.86	0.00
3,236.0	23.60	243.10	3,059.1	-399.5	-833.3	924.0	1.41	-1.38	-0.64
3,330.0	24.30	243.70	3,145.0	-416.6	-867.4	962.1	0.79	0.74	0.64
3,423.0	24.20	243.80	3,229.8	-433.5	-901.6	1,000.3	0.12	-0.11	0.11
3,517.0	24.10	244.90	3,315.5	-450.2	-936.3	1,038.8	0.49	-0.11	1.17
3,611.0	24.80	245.60	3,401.1	-466.5	-971.6	1,077.7	0.81	0.74	0.74
3,704.0	25.10	244.60	3,485.4	-483.0	-1,007.2	1,116.9	0.56	0.32	-1.08
3,798.0	25.00	244.00	3,570.6	-500.2	-1,043.1	1,156.7	0.29	-0.11	-0.64
3,892.0	26.00	243.10	3,655.4	-518.3	-1,079.3	1,197.1	1.14	1.06	-0.96
3,985.0	26.40	242.60	3,738.9	-537.0	-1,115.9	1,238.2	0.49	0.43	-0.54
4,079.0	26.60	240.00	3,823.0	-557.1	-1,152.6	1,280.1	1.25	0.21	-2.77
4,173.0	25.60	239.30	3,907.4	-578.0	-1,188.3	1,321.4	1.11	-1.06	-0.74
4,266.0	23.70	239.30	3,991.9	-597.8	-1,221.7	1,360.1	2.04	-2.04	0.00
4,360.0	23.70	243.50	4,078.0	-615.9	-1,254.8	1,397.8	1.80	0.00	4.47
4,454.0	24.60	244.00	4,163.8	-632.9	-1,289.3	1,436.2	0.98	0.96	0.53
4,548.0	24.40	243.80	4,249.3	-650.1	-1,324.3	1,475.2	0.23	-0.21	-0.21
4,641.0	24.50	244.40	4,334.0	-666.9	-1,358.9	1,513.7	0.29	0.11	0.65
4,735.0	25.20	244.20	4,419.3	-684.0	-1,394.5	1,553.2	0.75	0.74	-0.21
4,829.0	24.60	243.30	4,504.5	-701.5	-1,430.0	1,592.8	0.75	-0.64	-0.96
4,922.0	24.70	243.00	4,589.1	-719.0	-1,464.6	1,631.6	0.17	0.11	-0.32
5,016.0	24.40	243.10	4,674.6	-736.7	-1,499.5	1,670.6	0.32	-0.32	0.11
5,110.0	24.40	244.60	4,760.2	-753.8	-1,534.3	1,709.5	0.66	0.00	1.60
5,203.0	21.40	245.30	4,845.8	-769.2	-1,567.1	1,745.6	3.24	-3.23	0.75
5,297.0	19.80	245.60	4,933.8	-782.9	-1,597.2	1,778.7	1.71	-1.70	0.32
5,391.0	18.00	244.60	5,022.7	-795.7	-1,624.8	1,809.1	1.95	-1.91	-1.06
5,484.0	15.60	244.60	5,111.8	-807.3	-1,649.1	1,836.0	2.58	-2.58	0.00
5,578.0	14.40	244.40	5,202.6	-817.7	-1,671.0	1,860.3	1.28	-1.28	-0.21
5,672.0	12.70	245.60	5,293.9	-827.1	-1,691.0	1,882.3	1.83	-1.81	1.28
5,766.0	11.30	245.80	5,385.9	-835.1	-1,708.8	1,901.9	1.49	-1.49	0.21
5,859.0	10.10	245.40	5,477.3	-842.2	-1,724.5	1,919.1	1.29	-1.29	-0.43

Company:	BAYSWATER EXPLORATION & PRODUCTION	Local Co-ordinate Reference:	Well Lake 4-27
Project:	SEC.22-T7N-R67W	TVD Reference:	WELL @ 5020.0ft (Original Well Elev)
Site:	Lake - Ranchero Pad Sec.22-T7N-R67W	MD Reference:	WELL @ 5020.0ft (Original Well Elev)
Well:	Lake 4-27	North Reference:	True
Wellbore:	Wellbore #1	Survey Calculation Method:	Minimum Curvature
Design:	Wellbore #1	Database:	Landmark

Survey									
Measured Depth (ft)	Inclination (°)	Azimuth (°)	Vertical Depth (ft)	+N/-S (ft)	+E/-W (ft)	Vertical Section (ft)	Dogleg Rate (°/100ft)	Build Rate (°/100ft)	Turn Rate (°/100ft)
5,953.0	8.70	244.20	5,570.0	-848.8	-1,738.4	1,934.5	1.50	-1.49	-1.28
6,047.0	8.10	244.20	5,663.0	-854.7	-1,750.8	1,948.2	0.64	-0.64	0.00
6,140.0	6.90	244.40	5,755.2	-860.0	-1,761.7	1,960.3	1.29	-1.29	0.22
6,234.0	5.70	243.50	5,848.6	-864.5	-1,771.0	1,970.6	1.28	-1.28	-0.96
6,328.0	4.50	241.60	5,942.3	-868.4	-1,778.4	1,979.0	1.29	-1.28	-2.02
6,386.0	3.11	236.32	6,000.1	-870.3	-1,781.7	1,982.8	2.46	-2.39	-9.09
TARGET BHL 660'FNL, 660'FWL									
6,421.0	2.30	230.10	6,035.1	-871.3	-1,783.0	1,984.5	2.46	-2.32	-17.79
6,515.0	1.10	191.10	6,129.0	-873.4	-1,784.7	1,986.8	1.70	-1.28	-41.49
6,609.0	0.20	208.20	6,223.0	-874.4	-1,784.9	1,987.5	0.97	-0.96	18.19
6,702.0	0.30	333.10	6,316.0	-874.3	-1,785.1	1,987.7	0.48	0.11	134.30
6,796.0	0.50	314.00	6,410.0	-873.8	-1,785.5	1,987.8	0.25	0.21	-20.32
6,890.0	0.80	334.70	6,504.0	-873.0	-1,786.1	1,987.9	0.40	0.32	22.02
6,983.0	0.60	333.70	6,597.0	-871.9	-1,786.6	1,987.9	0.22	-0.22	-1.08
7,077.0	1.00	316.60	6,691.0	-870.9	-1,787.4	1,988.1	0.49	0.43	-18.19
7,171.0	0.20	305.00	6,785.0	-870.2	-1,788.1	1,988.5	0.86	-0.85	-12.34
7,265.0	0.40	296.90	6,879.0	-870.0	-1,788.5	1,988.7	0.22	0.21	-8.62
7,300.9	0.31	316.69	6,914.9	-869.8	-1,788.7	1,988.8	0.42	-0.25	55.14
LEGAL BOX 400' X 400' 666'FNL & 667'FWL - TARGET CIRCLE 660'FNL & 660'FWL									
7,358.0	0.30	2.70	6,972.0	-869.6	-1,788.8	1,988.8	0.42	-0.02	80.56
7,452.0	0.40	358.50	7,066.0	-869.0	-1,788.8	1,988.5	0.11	0.11	-4.47
7,546.0	0.30	14.50	7,160.0	-868.4	-1,788.7	1,988.2	0.15	-0.11	17.02
7,639.0	0.30	39.10	7,253.0	-868.0	-1,788.5	1,987.9	0.14	0.00	26.45
7,733.0	0.50	28.70	7,347.0	-867.5	-1,788.1	1,987.3	0.23	0.21	-11.06
7,778.0	0.50	48.20	7,392.0	-867.2	-1,787.9	1,986.9	0.38	0.00	43.33
7,820.0	0.50	68.00	7,434.0	-867.0	-1,787.6	1,986.6	0.41	0.00	47.14

Checked By: _____	Approved By: _____	Date: _____
-------------------	--------------------	-------------