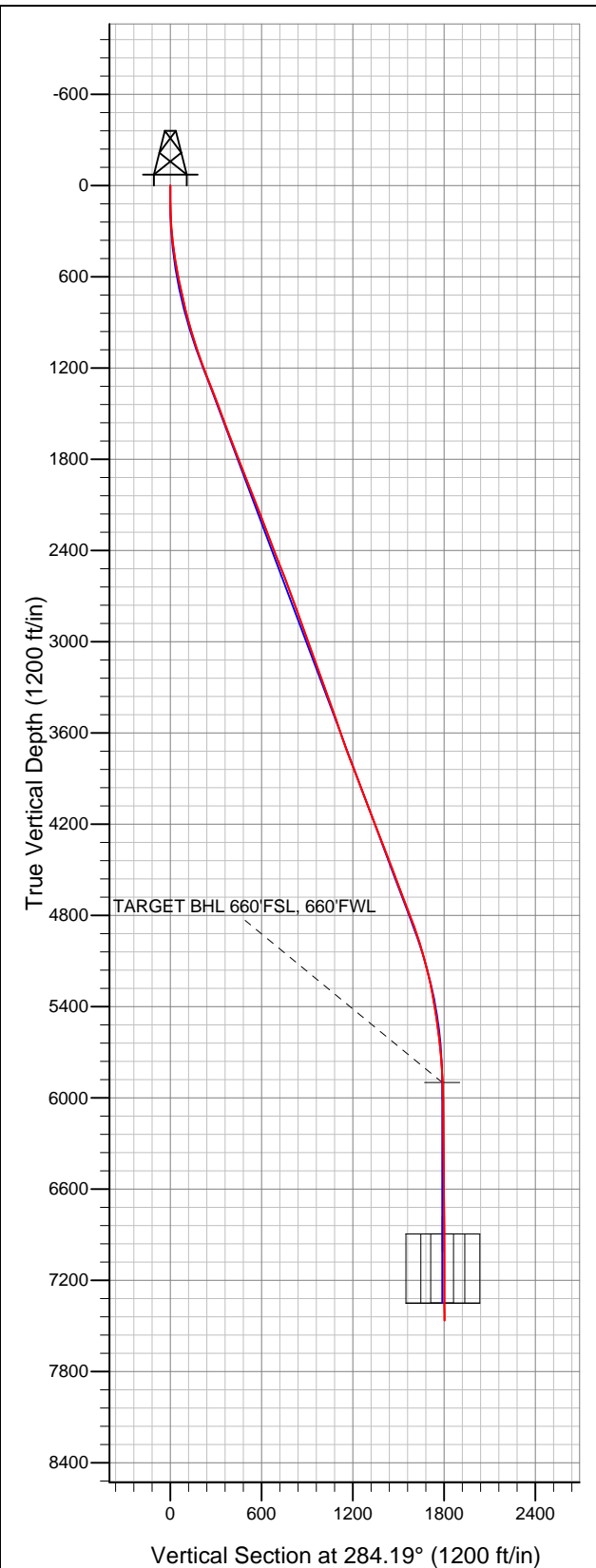


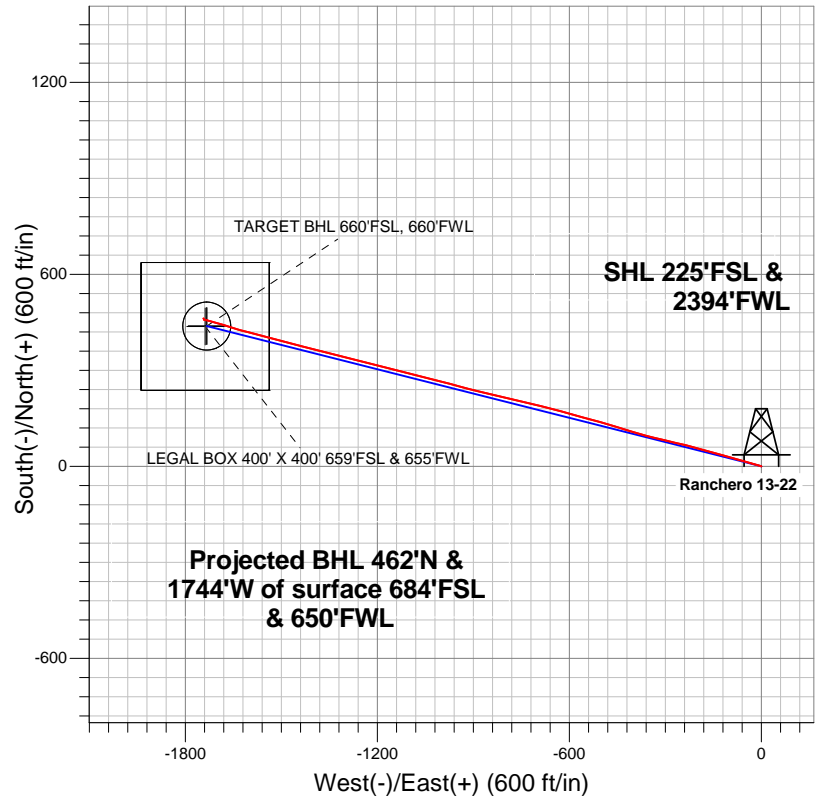
Well Name: Rancho 13-22

Surface Location: Lake - Rancho Pad Sec.22-T7N-R67W
North American Datum 1983 US State Plane 1983Colorado Northern Zone
Ground Elevation: 5004.0

+N/-S	+E/-W	Northing	Easting	Latitude	Longitude	Slot
0.0	0.0	1444921.77	3172219.02	40.553058	-104.880238	
Original Well Elev		WELL @ 5020.0ft (Original Well Elev)				



BAYSWATER EXPLORATION & PRODUCTION



LEGEND

- Wellbore #1
- Rancho 13-22, Wellbore #1, Plan #2 (7-20-12) R V0
- Survey #1

Final Survey Plot

Projected Final Survey -
7765'MD & 7465'TVD @ 1804'VS
0.40 deg Inc 293.00 deg AZ

Project: SEC.22-T7N-R67W
Site: Lake - Rancho Pad Sec.22-T7N-R67W
Well: Rancho 13-22
Plan: Wellbore #1



BAYSWATER EXPLORATION & PRODUCTION

SEC.22-T7N-R67W

Lake - Rancho Pad Sec.22-T7N-R67W

Rancho 13-22

Wellbore #1

Survey: Survey #1

Standard Survey Report

03 August, 2012

Company:	BAYSWATER EXPLORATION & PRODUCTION	Local Co-ordinate Reference:	Well Ranchero 13-22
Project:	SEC.22-T7N-R67W	TVD Reference:	WELL @ 5020.0ft (Original Well Elev)
Site:	Lake - Ranchero Pad Sec.22-T7N-R67W	MD Reference:	WELL @ 5020.0ft (Original Well Elev)
Well:	Ranchero 13-22	North Reference:	True
Wellbore:	Wellbore #1	Survey Calculation Method:	Minimum Curvature
Design:	Wellbore #1	Database:	Landmark

Project	SEC.22-T7N-R67W, Weld County, Colorado		
Map System:	US State Plane 1983	System Datum:	Mean Sea Level
Geo Datum:	North American Datum 1983		Using Well Reference Point
Map Zone:	Colorado Northern Zone		Using geodetic scale factor

Site	Lake - Ranchero Pad Sec.22-T7N-R67W				
Site Position:		Northing:	1,444,921.99ft	Latitude:	40.553058
From:	Lat/Long	Easting:	3,172,249.31ft	Longitude:	-104.880129
Position Uncertainty:	0.0 ft	Slot Radius:	"	Grid Convergence:	0.40 °

Well	Ranchero 13-22					
Well Position	+N-S	0.0 ft	Northing:	1,444,921.77 ft	Latitude:	40.553058
	+E-W	0.0 ft	Easting:	3,172,219.02 ft	Longitude:	-104.880238
Position Uncertainty		0.0 ft	Wellhead Elevation:	ft	Ground Level:	5,004.0 ft

Wellbore	Wellbore #1				
Magnetics	Model Name	Sample Date	Declination (°)	Dip Angle (°)	Field Strength (nT)
	IGRF2010	7/20/2012	8.79	67.12	53,082

Design	Wellbore #1				
Audit Notes:					
Version:	1.0	Phase:	ACTUAL	Tie On Depth:	0.0
Vertical Section:	Depth From (TVD) (ft)	+N/-S (ft)	+E/-W (ft)	Direction (°)	
	0.0	0.0	0.0	284.19	

Survey Program	Date	8/3/2012			
From (ft)	To (ft)	Survey (Wellbore)	Tool Name	Description	
93.0	7,765.0	Survey #1 (Wellbore #1)	MWD	MWD - Standard	

Survey									
Measured Depth (ft)	Inclination (°)	Azimuth (°)	Vertical Depth (ft)	+N/-S (ft)	+E/-W (ft)	Vertical Section (ft)	Dogleg Rate (°/100ft)	Build Rate (°/100ft)	Turn Rate (°/100ft)
0.0	0.00	0.00	0.0	0.0	0.0	0.0	0.00	0.00	0.00
93.0	0.70	285.00	93.0	0.1	-0.5	0.6	0.75	0.75	0.00
181.0	2.10	295.90	181.0	1.0	-2.5	2.7	1.61	1.59	12.39
270.0	4.00	289.90	269.8	2.8	-6.9	7.4	2.16	2.13	-6.74
362.0	6.00	287.10	361.5	5.3	-14.5	15.4	2.19	2.17	-3.04
453.0	8.50	286.20	451.8	8.5	-25.5	26.8	2.75	2.75	-0.99
544.0	10.20	283.80	541.5	12.3	-39.8	41.6	1.92	1.87	-2.64
636.0	12.00	283.90	631.8	16.6	-57.0	59.3	1.96	1.96	0.11
730.0	12.80	285.00	723.6	21.6	-76.5	79.5	0.89	0.85	1.17
828.0	13.20	285.30	819.1	27.4	-97.8	101.6	0.41	0.41	0.31
922.0	15.40	285.70	910.2	33.6	-120.2	124.8	2.34	2.34	0.43
1,016.0	17.50	286.20	1,000.3	40.9	-145.8	151.4	2.24	2.23	0.53

Company:	BAYSWATER EXPLORATION & PRODUCTION	Local Co-ordinate Reference:	Well Ranchero 13-22
Project:	SEC.22-T7N-R67W	TVD Reference:	WELL @ 5020.0ft (Original Well Elev)
Site:	Lake - Ranchero Pad Sec.22-T7N-R67W	MD Reference:	WELL @ 5020.0ft (Original Well Elev)
Well:	Ranchero 13-22	North Reference:	True
Wellbore:	Wellbore #1	Survey Calculation Method:	Minimum Curvature
Design:	Wellbore #1	Database:	Landmark

Survey									
Measured Depth (ft)	Inclination (°)	Azimuth (°)	Vertical Depth (ft)	+N/-S (ft)	+E/-W (ft)	Vertical Section (ft)	Dogleg Rate (°/100ft)	Build Rate (°/100ft)	Turn Rate (°/100ft)
1,109.0	18.30	288.00	1,088.8	49.3	-173.1	179.9	1.05	0.86	1.94
1,203.0	20.50	283.80	1,177.5	57.8	-203.1	211.1	2.77	2.34	-4.47
1,297.0	21.80	283.80	1,265.2	65.9	-236.1	245.0	1.38	1.38	0.00
1,390.0	21.30	283.20	1,351.7	73.9	-269.3	279.2	0.59	-0.54	-0.65
1,484.0	20.40	282.70	1,439.5	81.4	-301.9	312.6	0.98	-0.96	-0.53
1,578.0	20.70	283.90	1,527.5	89.0	-334.0	345.6	0.55	0.32	1.28
1,672.0	20.80	284.80	1,615.4	97.2	-366.3	378.9	0.36	0.11	0.96
1,765.0	20.70	287.40	1,702.4	106.4	-397.9	411.8	1.00	-0.11	2.80
1,859.0	21.40	287.40	1,790.1	116.5	-430.1	445.5	0.74	0.74	0.00
1,953.0	20.80	287.10	1,877.8	126.5	-462.4	479.3	0.65	-0.64	-0.32
2,046.0	21.70	284.80	1,964.5	135.7	-494.8	513.0	1.32	0.97	-2.47
2,140.0	22.20	285.50	2,051.7	144.9	-528.8	548.2	0.60	0.53	0.74
2,234.0	20.80	285.90	2,139.1	154.2	-561.9	582.6	1.50	-1.49	0.43
2,327.0	20.80	285.30	2,226.1	163.1	-593.7	615.6	0.23	0.00	-0.65
2,421.0	20.80	285.70	2,314.0	172.1	-625.9	649.0	0.15	0.00	0.43
2,515.0	21.40	284.10	2,401.7	180.7	-658.6	682.8	0.88	0.64	-1.70
2,608.0	21.50	283.40	2,488.2	188.8	-691.6	716.8	0.30	0.11	-0.75
2,702.0	21.03	283.20	2,575.8	196.7	-724.8	750.9	0.51	-0.50	-0.21
2,796.0	20.03	283.40	2,663.8	204.3	-756.9	783.9	1.07	-1.06	0.21
2,889.0	20.40	283.40	2,751.1	211.7	-788.2	816.0	0.40	0.40	0.00
2,983.0	20.40	283.20	2,839.2	219.2	-820.0	848.8	0.07	0.00	-0.21
3,077.0	19.70	283.60	2,927.5	226.7	-851.4	881.0	0.76	-0.74	0.43
3,171.0	20.00	283.20	3,015.9	234.1	-882.4	912.9	0.35	0.32	-0.43
3,264.0	19.70	283.90	3,103.4	241.5	-913.1	944.5	0.41	-0.32	0.75
3,358.0	19.30	285.90	3,192.0	249.6	-943.5	975.9	0.83	-0.43	2.13
3,452.0	19.60	283.90	3,280.7	257.6	-973.7	1,007.1	0.78	0.32	-2.13
3,545.0	19.70	285.20	3,368.2	265.5	-1,004.0	1,038.4	0.48	0.11	1.40
3,639.0	19.90	284.80	3,456.7	273.7	-1,034.7	1,070.3	0.26	0.21	-0.43
3,733.0	18.80	284.60	3,545.4	281.6	-1,064.9	1,101.4	1.17	-1.17	-0.21
3,826.0	19.30	284.50	3,633.3	289.2	-1,094.2	1,131.8	0.54	0.54	-0.11
3,920.0	19.70	283.80	3,721.9	296.9	-1,124.7	1,163.1	0.49	0.43	-0.74
4,014.0	21.50	283.60	3,809.9	304.7	-1,156.8	1,196.2	1.92	1.91	-0.21
4,107.0	21.05	283.40	3,896.5	312.6	-1,189.6	1,229.9	0.49	-0.48	-0.22
4,201.0	20.10	283.80	3,984.5	320.4	-1,221.7	1,263.0	1.02	-1.01	0.43
4,295.0	22.00	284.10	4,072.3	328.5	-1,254.5	1,296.7	2.02	2.02	0.32
4,389.0	20.80	284.80	4,159.8	337.1	-1,287.7	1,331.0	1.31	-1.28	0.74
4,482.0	21.20	284.30	4,246.6	345.4	-1,320.0	1,364.4	0.47	0.43	-0.54
4,576.0	21.20	284.30	4,334.2	353.8	-1,352.9	1,398.4	0.00	0.00	0.00
4,670.0	20.80	284.60	4,422.0	362.2	-1,385.5	1,432.0	0.44	-0.43	0.32
4,763.0	20.60	285.00	4,509.0	370.6	-1,417.3	1,464.9	0.26	-0.22	0.43
4,857.0	20.70	285.30	4,596.9	379.3	-1,449.3	1,498.1	0.15	0.11	0.32
4,951.0	21.20	284.10	4,684.7	387.8	-1,481.8	1,531.7	0.70	0.53	-1.28
5,044.0	21.10	284.10	4,771.5	396.0	-1,514.3	1,565.2	0.11	-0.11	0.00
5,138.0	20.00	284.80	4,859.5	404.2	-1,546.3	1,598.2	1.20	-1.17	0.74
5,232.0	18.10	284.80	4,948.3	412.1	-1,576.0	1,628.9	2.02	-2.02	0.00
5,325.0	16.40	284.50	5,037.1	419.0	-1,602.6	1,656.5	1.83	-1.83	-0.32
5,419.0	14.10	284.80	5,127.8	425.3	-1,626.6	1,681.2	2.45	-2.45	0.32
5,513.0	12.90	288.00	5,219.2	431.5	-1,647.6	1,703.1	1.50	-1.28	3.40
5,606.0	10.90	287.40	5,310.2	437.3	-1,665.9	1,722.2	2.15	-2.15	-0.65
5,700.0	9.10	286.90	5,402.8	442.1	-1,681.5	1,738.5	1.92	-1.91	-0.53
5,794.0	8.10	285.90	5,495.7	446.1	-1,695.0	1,752.6	1.08	-1.06	-1.06
5,888.0	7.00	285.50	5,588.9	449.4	-1,706.8	1,764.9	1.17	-1.17	-0.43
5,981.0	6.20	284.80	5,681.3	452.2	-1,717.2	1,775.6	0.86	-0.86	-0.75

Company:	BAYSWATER EXPLORATION & PRODUCTION	Local Co-ordinate Reference:	Well Ranchero 13-22
Project:	SEC.22-T7N-R67W	TVD Reference:	WELL @ 5020.0ft (Original Well Elev)
Site:	Lake - Ranchero Pad Sec.22-T7N-R67W	MD Reference:	WELL @ 5020.0ft (Original Well Elev)
Well:	Ranchero 13-22	North Reference:	True
Wellbore:	Wellbore #1	Survey Calculation Method:	Minimum Curvature
Design:	Wellbore #1	Database:	Landmark

Survey									
Measured Depth (ft)	Inclination (°)	Azimuth (°)	Vertical Depth (ft)	+N/-S (ft)	+E/-W (ft)	Vertical Section (ft)	Dogleg Rate (°/100ft)	Build Rate (°/100ft)	Turn Rate (°/100ft)
6,075.0	4.30	283.90	5,774.9	454.4	-1,725.5	1,784.2	2.02	-2.02	-0.96
6,169.0	2.60	296.20	5,868.7	456.2	-1,730.8	1,789.8	1.96	-1.81	13.09
6,200.2	2.12	288.53	5,899.9	456.7	-1,732.0	1,791.1	1.84	-1.53	-24.60
TARGET BHL 660'FSL, 660'FWL									
6,262.0	1.40	259.10	5,961.7	456.9	-1,733.8	1,792.9	1.84	-1.17	-47.61
6,356.0	0.40	261.60	6,055.7	456.6	-1,735.3	1,794.3	1.06	-1.06	2.66
6,450.0	0.50	280.80	6,149.7	456.6	-1,736.0	1,795.0	0.19	0.11	20.43
6,543.0	0.50	276.40	6,242.7	456.8	-1,736.8	1,795.8	0.04	0.00	-4.73
6,637.0	0.50	283.90	6,336.7	456.9	-1,737.6	1,796.6	0.07	0.00	7.98
6,731.0	0.60	284.60	6,430.7	457.1	-1,738.5	1,797.5	0.11	0.11	0.74
6,824.0	0.60	283.60	6,523.7	457.4	-1,739.4	1,798.5	0.01	0.00	-1.08
6,918.0	0.90	288.30	6,617.6	457.7	-1,740.6	1,799.7	0.33	0.32	5.00
7,012.0	1.00	287.80	6,711.6	458.2	-1,742.1	1,801.3	0.11	0.11	-0.53
7,106.0	0.40	70.50	6,805.6	458.6	-1,742.6	1,801.8	1.43	-0.64	151.81
7,195.3	0.20	12.79	6,895.0	458.8	-1,742.2	1,801.6	0.38	-0.22	-64.61
TARGET CIRCLE 660'FSL & 660'FWL - LEGAL BOX 400' X 400' 659'FSL & 655'FWL									
7,199.0	0.20	8.80	6,898.6	458.8	-1,742.2	1,801.6	0.38	0.00	-108.54
7,293.0	0.40	351.60	6,992.6	459.3	-1,742.3	1,801.7	0.23	0.21	-18.30
7,387.0	0.40	357.60	7,086.6	460.0	-1,742.3	1,801.9	0.04	0.00	6.38
7,480.0	0.40	357.00	7,179.6	460.6	-1,742.4	1,802.1	0.00	0.00	-0.65
7,574.0	0.40	323.00	7,273.6	461.2	-1,742.6	1,802.5	0.25	0.00	-36.17
7,668.0	0.40	311.00	7,367.6	461.7	-1,743.0	1,803.0	0.09	0.00	-12.77
7,723.0	0.40	301.30	7,422.6	461.9	-1,743.3	1,803.4	0.12	0.00	-17.64
7,765.0	0.40	293.00	7,464.6	462.0	-1,743.6	1,803.6	0.14	0.00	-19.76

Checked By: _____	Approved By: _____	Date: _____
-------------------	--------------------	-------------