

Whiting Oil & Gas

Well Name: Wildhorse #06-0634H

Surface Location: Wildhorse #06-0634H Pad Sec.6-T9N-R59W
North American Datum 1983 , US State Plane 1983 Colorado Northern Zone

Ground Elevation: 5186.5

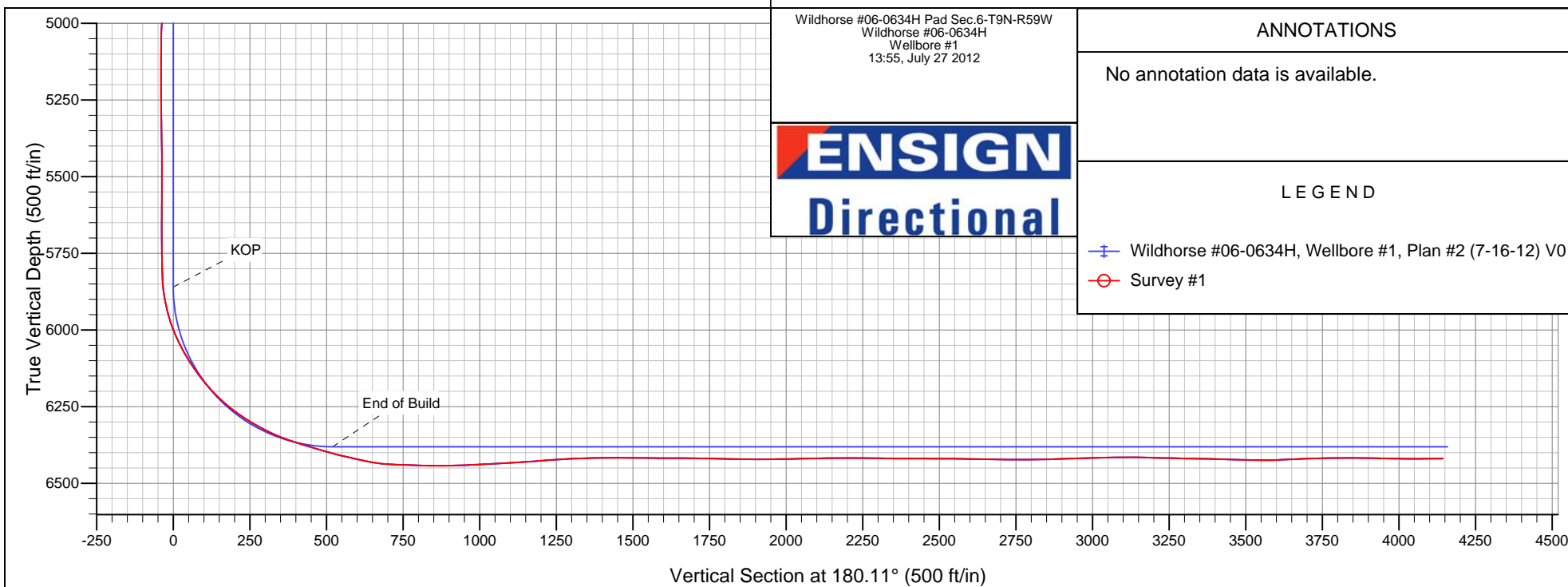
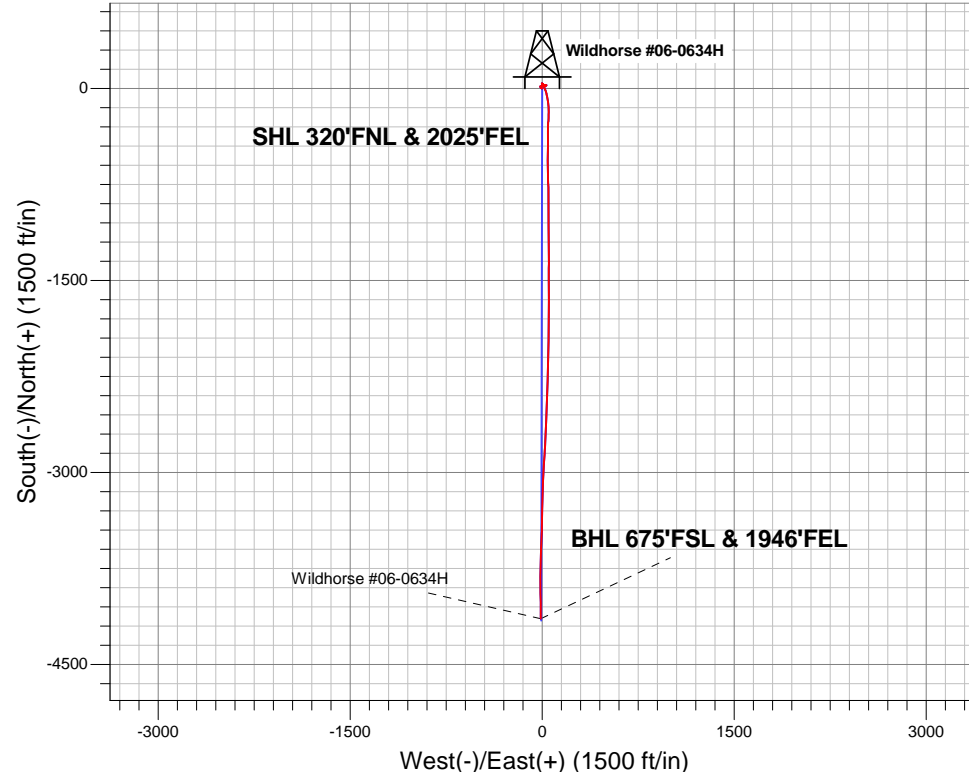
+N/-S	+E/-W	Northing	Easting	Latitude	Longitude	Slot
0.0	0.0	1532489.70	3410188.18	40.785664	-104.018711	

Original Well Elev WELL @ 5201.5ft (Original Well Elev)

FINAL SURVEY

Projected Bottom Hole Location
10326' MD 6419' TVD 4144' S & 12' W of SHL

91.00 degree Incl @ 180.00 degree AZM





Whiting Oil & Gas

SEC.6-T9N-R59W

Wildhorse #06-0634H Pad Sec.6-T9N-R59W

Wildhorse #06-0634H

Wellbore #1

Survey: Survey #1

Standard Survey Report

27 July, 2012

Company:	Whiting Oil & Gas	Local Co-ordinate Reference:	Well Wildhorse #06-0634H
Project:	SEC.6-T9N-R59W	TVD Reference:	WELL @ 5201.5ft (Original Well Elev)
Site:	Wildhorse #06-0634H Pad Sec.6-T9N-R59W	MD Reference:	WELL @ 5201.5ft (Original Well Elev)
Well:	Wildhorse #06-0634H	North Reference:	True
Wellbore:	Wellbore #1	Survey Calculation Method:	Minimum Curvature
Design:	Wellbore #1	Database:	Landmark

Project	SEC.6-T9N-R59W, Weld County, CO		
Map System:	US State Plane 1983	System Datum:	Mean Sea Level
Geo Datum:	North American Datum 1983		Using Well Reference Point
Map Zone:	Colorado Northern Zone		Using geodetic scale factor

Site		Wildhorse #06-0634H Pad Sec.6-T9N-R59W			
Site Position:		Northing:	1,532,489.70ft	Latitude:	40.785664
From:	Lat/Long	Easting:	3,410,188.18ft	Longitude:	-104.018711
Position Uncertainty:	0.0 ft	Slot Radius:	"	Grid Convergence:	0.96 °

Well	Wildhorse #06-0634H					
Well Position	+N/-S	0.0 ft	Northing:	1,532,489.70 ft	Latitude:	40.785664
	+E/-W	0.0 ft	Easting:	3,410,188.18 ft	Longitude:	-104.018711
Position Uncertainty		0.0 ft	Wellhead Elevation:	ft	Ground Level:	5,186.5 ft

Wellbore	Wellbore #1				
Magnetics	Model Name	Sample Date	Declination (°)	Dip Angle (°)	Field Strength (nT)
	IGRF2010	11/14/2011	8.43	67.47	53,363

Design	Wellbore #1				
Audit Notes:					
Version:	1.0	Phase:	ACTUAL	Tie On Depth:	0.0
Vertical Section:	Depth From (TVD) (ft)	+N/-S (ft)	+E/-W (ft)	Direction (°)	
	0.0	0.0	0.0	180.11	

Survey Program		Date	7/27/2012		
From (ft)	To (ft)	Survey (Wellbore)	Tool Name	Description	
161.0	10,326.0	Survey #1 (Wellbore #1)	MWD	MWD - Standard	

Survey										
Measured Depth (ft)	Inclination (°)	Azimuth (°)	Vertical Depth (ft)	+N/-S (ft)	+E/-W (ft)	Vertical Section (ft)	Dogleg Rate (°/100ft)	Build Rate (°/100ft)	Turn Rate (°/100ft)	
0.0	0.00	0.00	0.0	0.0	0.0	0.0	0.00	0.00	0.00	
1.0	0.00	251.00	1.0	0.0	0.0	0.0	0.43	0.43	0.00	
SHL 320'FNL & 2025'FEL										
1.3	0.00	251.00	1.3	0.0	0.0	0.0	0.00	0.00	0.00	
HARDLINE 660'FSL										
4.0	0.02	251.00	4.0	0.0	0.0	0.0	0.49	0.49	0.00	
HARDLINE 660'FNL										
161.0	0.70	251.00	161.0	-0.3	-0.9	0.3	0.43	0.43	0.00	
251.0	0.90	251.40	251.0	-0.7	-2.1	0.7	0.22	0.22	0.44	
340.0	0.70	312.20	340.0	-0.6	-3.2	0.6	0.93	-0.22	68.31	
433.0	0.70	322.00	433.0	0.2	-4.0	-0.2	0.13	0.00	10.54	
526.0	0.50	338.40	526.0	1.1	-4.5	-1.1	0.28	-0.22	17.63	
618.0	0.70	275.80	618.0	1.5	-5.2	-1.5	0.70	0.22	-68.04	

Company:	Whiting Oil & Gas	Local Co-ordinate Reference:	Well Wildhorse #06-0634H
Project:	SEC.6-T9N-R59W	TVD Reference:	WELL @ 5201.5ft (Original Well Elev)
Site:	Wildhorse #06-0634H Pad Sec.6-T9N-R59W	MD Reference:	WELL @ 5201.5ft (Original Well Elev)
Well:	Wildhorse #06-0634H	North Reference:	True
Wellbore:	Wellbore #1	Survey Calculation Method:	Minimum Curvature
Design:	Wellbore #1	Database:	Landmark

Survey									
Measured Depth (ft)	Inclination (°)	Azimuth (°)	Vertical Depth (ft)	+N-S (ft)	+E-W (ft)	Vertical Section (ft)	Dogleg Rate (°/100ft)	Build Rate (°/100ft)	Turn Rate (°/100ft)
710.0	0.90	317.30	710.0	2.1	-6.2	-2.1	0.65	0.22	45.11
833.0	1.10	310.00	832.9	3.6	-7.8	-3.5	0.19	0.16	-5.93
956.0	2.00	322.00	955.9	6.0	-10.0	-6.0	0.77	0.73	9.76
1,079.0	1.80	319.20	1,078.8	9.2	-12.6	-9.1	0.18	-0.16	-2.28
1,232.0	1.70	322.40	1,231.8	12.8	-15.5	-12.8	0.09	-0.07	2.09
1,327.0	1.20	20.40	1,326.7	14.8	-16.0	-14.8	1.55	-0.53	61.05
1,359.0	1.10	34.80	1,358.7	15.4	-15.8	-15.4	0.95	-0.31	45.00
1,421.0	2.30	69.80	1,420.7	16.3	-14.2	-16.3	2.48	1.94	56.45
1,507.0	2.80	77.30	1,506.6	17.4	-10.6	-17.4	0.70	0.58	8.72
1,552.0	2.80	77.30	1,551.6	17.9	-8.4	-17.8	0.00	0.00	0.00
1,573.0	3.30	86.30	1,572.5	18.0	-7.3	-18.0	3.29	2.38	42.86
1,699.0	4.00	72.20	1,698.3	19.6	0.5	-19.6	0.90	0.56	-11.19
1,824.0	2.10	70.00	1,823.1	21.7	6.8	-21.7	1.52	-1.52	-1.76
1,951.0	1.30	101.40	1,950.0	22.2	10.4	-22.2	0.94	-0.63	24.72
2,077.0	1.40	103.70	2,076.0	21.6	13.3	-21.6	0.09	0.08	1.83
2,203.0	0.90	123.90	2,202.0	20.6	15.6	-20.7	0.51	-0.40	16.03
2,329.0	0.50	140.30	2,328.0	19.7	16.8	-19.7	0.35	-0.32	13.02
2,456.0	0.40	137.60	2,455.0	18.9	17.4	-19.0	0.08	-0.08	-2.13
2,582.0	0.50	104.90	2,581.0	18.5	18.2	-18.5	0.22	0.08	-25.95
2,709.0	0.30	144.30	2,708.0	18.0	19.0	-18.1	0.26	-0.16	31.02
2,835.0	0.40	107.40	2,834.0	17.6	19.6	-17.7	0.19	0.08	-29.29
2,962.0	0.40	116.20	2,960.9	17.3	20.4	-17.4	0.05	0.00	6.93
3,089.0	0.70	105.30	3,087.9	16.9	21.5	-17.0	0.25	0.24	-8.58
3,216.0	0.70	76.80	3,214.9	16.9	23.1	-16.9	0.27	0.00	-22.44
3,342.0	0.60	92.80	3,340.9	17.0	24.5	-17.1	0.16	-0.08	12.70
3,469.0	1.10	65.60	3,467.9	17.5	26.2	-17.5	0.50	0.39	-21.42
3,596.0	2.10	56.10	3,594.9	19.3	29.3	-19.4	0.81	0.79	-7.48
3,722.0	2.10	39.70	3,720.8	22.4	32.7	-22.4	0.48	0.00	-13.02
3,849.0	0.50	309.50	3,847.7	24.5	33.7	-24.6	1.70	-1.26	-71.02
3,975.0	1.30	267.20	3,973.7	24.8	31.9	-24.8	0.79	0.63	-33.57
4,102.0	1.40	277.60	4,100.7	24.9	28.9	-25.0	0.21	0.08	8.19
4,228.0	1.80	283.70	4,226.6	25.6	25.5	-25.6	0.34	0.32	4.84
4,355.0	1.60	276.70	4,353.6	26.3	21.8	-26.3	0.23	-0.16	-5.51
4,482.0	1.80	278.60	4,480.5	26.8	18.0	-26.8	0.16	0.16	1.50
4,608.0	1.90	262.30	4,606.5	26.8	14.0	-26.8	0.42	0.08	-12.94
4,735.0	1.80	302.00	4,733.4	27.6	10.2	-27.6	0.99	-0.08	31.26
4,893.0	3.60	323.60	4,891.2	32.9	5.2	-32.9	1.29	1.14	13.67
4,988.0	2.90	319.60	4,986.1	37.1	1.8	-37.1	0.77	-0.74	-4.21
5,115.0	1.00	290.20	5,113.0	39.9	-1.3	-39.9	1.64	-1.50	-23.15
5,244.0	0.60	200.90	5,242.0	39.7	-2.6	-39.7	0.90	-0.31	-69.22
5,371.0	0.60	185.30	5,369.0	38.4	-2.9	-38.4	0.13	0.00	-12.28
5,497.0	0.40	128.30	5,495.0	37.5	-2.6	-37.5	0.40	-0.16	-45.24
5,624.0	0.70	105.10	5,622.0	37.0	-1.5	-37.0	0.29	0.24	-18.27
5,725.0	1.00	94.60	5,723.0	36.8	0.0	-36.8	0.33	0.30	-10.40
5,750.0	1.00	84.90	5,748.0	36.8	0.4	-36.8	0.68	0.00	-38.80
5,781.0	1.10	88.90	5,779.0	36.8	1.0	-36.8	0.40	0.32	12.90
5,813.0	2.30	133.40	5,810.9	36.4	1.7	-36.4	5.31	3.75	139.06
5,845.0	4.90	149.20	5,842.9	34.8	2.9	-34.8	8.62	8.13	49.38
5,876.0	8.30	154.00	5,873.7	31.6	4.6	-31.6	11.10	10.97	15.48
5,908.0	11.80	155.20	5,905.2	26.6	7.0	-26.6	10.96	10.94	3.75
5,940.0	15.70	154.00	5,936.2	19.7	10.2	-19.7	12.22	12.19	-3.75
5,971.0	18.90	154.20	5,965.8	11.4	14.3	-11.4	10.32	10.32	0.65
6,003.0	22.20	156.10	5,995.8	1.2	19.0	-1.2	10.52	10.31	5.94
6,035.0	25.60	159.10	6,025.1	-10.8	23.9	10.7	11.28	10.63	9.38

Company:	Whiting Oil & Gas	Local Co-ordinate Reference:	Well Wildhorse #06-0634H
Project:	SEC.6-T9N-R59W	TVD Reference:	WELL @ 5201.5ft (Original Well Elev)
Site:	Wildhorse #06-0634H Pad Sec.6-T9N-R59W	MD Reference:	WELL @ 5201.5ft (Original Well Elev)
Well:	Wildhorse #06-0634H	North Reference:	True
Wellbore:	Wellbore #1	Survey Calculation Method:	Minimum Curvature
Design:	Wellbore #1	Database:	Landmark

Survey										
Measured Depth (ft)	Inclination (°)	Azimuth (°)	Vertical Depth (ft)	+N/-S (ft)	+E/-W (ft)	Vertical Section (ft)	Dogleg Rate (°/100ft)	Build Rate (°/100ft)	Turn Rate (°/100ft)	
6,066.0	28.70	163.50	6,052.6	-24.2	28.4	24.1	11.91	10.00	14.19	
6,098.0	31.40	164.90	6,080.3	-39.6	32.7	39.5	8.72	8.44	4.38	
6,129.0	33.30	167.00	6,106.5	-55.7	36.8	55.6	7.12	6.13	6.77	
6,161.0	35.20	170.30	6,133.0	-73.3	40.3	73.3	8.30	5.94	10.31	
6,193.0	38.20	172.10	6,158.6	-92.2	43.2	92.2	9.96	9.38	5.63	
6,224.0	41.40	172.60	6,182.4	-111.9	45.8	111.8	10.37	10.32	1.61	
6,256.0	44.40	173.50	6,205.9	-133.5	48.5	133.4	9.57	9.38	2.81	
6,288.0	47.00	177.00	6,228.2	-156.3	50.4	156.2	11.28	8.13	10.94	
6,319.0	50.40	180.50	6,248.7	-179.6	50.8	179.5	13.86	10.97	11.29	
6,351.0	54.30	181.40	6,268.2	-204.9	50.4	204.8	12.39	12.19	2.81	
6,383.0	56.60	183.30	6,286.4	-231.3	49.3	231.2	8.69	7.19	5.94	
6,414.0	59.30	183.30	6,302.8	-257.5	47.8	257.4	8.71	8.71	0.00	
6,445.0	61.60	182.10	6,318.1	-284.4	46.6	284.4	8.15	7.42	-3.87	
6,476.0	63.80	180.50	6,332.3	-312.0	45.9	311.9	8.45	7.10	-5.16	
6,507.0	66.70	180.50	6,345.3	-340.1	45.7	340.0	9.35	9.35	0.00	
6,538.0	70.30	180.50	6,356.7	-369.0	45.4	368.9	11.61	11.61	0.00	
6,569.0	73.10	180.20	6,366.4	-398.4	45.3	398.3	9.08	9.03	-0.97	
6,600.0	73.20	180.20	6,375.4	-428.1	45.2	428.0	0.32	0.32	0.00	
6,631.0	72.50	180.70	6,384.5	-457.7	44.9	457.6	2.73	-2.26	1.61	
6,661.0	73.50	180.50	6,393.3	-486.4	44.6	486.3	3.39	3.33	-0.67	
6,692.0	75.10	180.50	6,401.7	-516.2	44.4	516.1	5.16	5.16	0.00	
6,723.0	76.80	180.70	6,409.2	-546.3	44.0	546.2	5.52	5.48	0.65	
6,754.0	77.30	180.00	6,416.2	-576.5	43.9	576.4	2.73	1.61	-2.26	
6,785.0	77.00	179.30	6,423.1	-606.7	44.0	606.6	2.40	-0.97	-2.26	
6,816.0	78.50	178.20	6,429.6	-637.0	44.7	636.9	5.95	4.84	-3.55	
6,847.0	82.60	178.80	6,434.7	-667.6	45.5	667.5	13.36	13.23	1.94	
6,862.0	84.60	178.90	6,436.4	-682.5	45.8	682.4	13.35	13.33	0.67	
6,919.0	88.60	178.10	6,439.8	-739.3	47.3	739.2	7.16	7.02	-1.40	
6,951.0	88.00	178.90	6,440.7	-771.3	48.1	771.2	3.12	-1.88	2.50	
6,982.0	88.30	179.10	6,441.7	-802.3	48.7	802.2	1.16	0.97	0.65	
7,014.0	88.80	179.50	6,442.5	-834.3	49.1	834.2	2.00	1.56	1.25	
7,046.0	90.00	179.30	6,442.9	-866.3	49.4	866.2	3.80	3.75	-0.63	
7,078.0	91.40	180.30	6,442.5	-898.3	49.5	898.2	5.38	4.38	3.13	
7,109.0	91.80	179.80	6,441.6	-929.2	49.5	929.2	2.07	1.29	-1.61	
7,141.0	91.70	179.80	6,440.6	-961.2	49.6	961.1	0.31	-0.31	0.00	
7,172.0	92.30	181.00	6,439.6	-992.2	49.4	992.1	4.33	1.94	3.87	
7,204.0	93.50	180.00	6,437.9	-1,024.2	49.1	1,024.1	4.88	3.75	-3.13	
7,236.0	93.60	179.60	6,436.0	-1,056.1	49.2	1,056.0	1.29	0.31	-1.25	
7,268.0	93.60	180.00	6,433.9	-1,088.0	49.3	1,088.0	1.25	0.00	1.25	
7,299.0	93.50	179.80	6,432.0	-1,119.0	49.4	1,118.9	0.72	-0.32	-0.65	
7,331.0	93.60	179.30	6,430.0	-1,150.9	49.6	1,150.8	1.59	0.31	-1.56	
7,362.0	93.90	179.60	6,428.0	-1,181.9	49.9	1,181.8	1.37	0.97	0.97	
7,394.0	93.80	178.80	6,425.9	-1,213.8	50.4	1,213.7	2.51	-0.31	-2.50	
7,426.0	94.30	178.40	6,423.6	-1,245.7	51.1	1,245.6	2.00	1.56	-1.25	
7,458.0	93.60	179.10	6,421.4	-1,277.6	51.8	1,277.5	3.09	-2.19	2.19	
7,489.0	93.00	179.50	6,419.6	-1,308.6	52.2	1,308.5	2.32	-1.94	1.29	
7,521.0	92.20	180.00	6,418.2	-1,340.5	52.4	1,340.4	2.95	-2.50	1.56	
7,552.0	91.00	180.20	6,417.3	-1,371.5	52.3	1,371.4	3.92	-3.87	0.65	
7,584.0	89.60	180.90	6,417.1	-1,403.5	52.0	1,403.4	4.89	-4.38	2.19	
7,616.0	89.60	180.90	6,417.4	-1,435.5	51.5	1,435.4	0.00	0.00	0.00	
7,647.0	90.00	180.70	6,417.5	-1,466.5	51.1	1,466.4	1.44	1.29	-0.65	
7,679.0	90.10	179.50	6,417.4	-1,498.5	51.0	1,498.4	3.76	0.31	-3.75	
7,710.0	89.70	179.60	6,417.5	-1,529.5	51.3	1,529.4	1.33	-1.29	0.32	
7,742.0	89.40	180.20	6,417.7	-1,561.5	51.3	1,561.4	2.10	-0.94	1.88	

Company:	Whiting Oil & Gas	Local Co-ordinate Reference:	Well Wildhorse #06-0634H
Project:	SEC.6-T9N-R59W	TVD Reference:	WELL @ 5201.5ft (Original Well Elev)
Site:	Wildhorse #06-0634H Pad Sec.6-T9N-R59W	MD Reference:	WELL @ 5201.5ft (Original Well Elev)
Well:	Wildhorse #06-0634H	North Reference:	True
Wellbore:	Wellbore #1	Survey Calculation Method:	Minimum Curvature
Design:	Wellbore #1	Database:	Landmark

Survey										
Measured Depth (ft)	Inclination (°)	Azimuth (°)	Vertical Depth (ft)	+N/-S (ft)	+E/-W (ft)	Vertical Section (ft)	Dogleg Rate (°/100ft)	Build Rate (°/100ft)	Turn Rate (°/100ft)	
7,774.0	89.60	179.30	6,418.0	-1,593.5	51.4	1,593.4	2.88	0.63	-2.81	
7,806.0	89.60	178.90	6,418.3	-1,625.5	52.0	1,625.4	1.25	0.00	-1.25	
7,837.0	89.60	179.10	6,418.5	-1,656.5	52.5	1,656.4	0.65	0.00	0.65	
7,869.0	89.80	180.50	6,418.6	-1,688.5	52.6	1,688.4	4.42	0.63	4.38	
7,901.0	89.20	180.00	6,418.9	-1,720.5	52.5	1,720.4	2.44	-1.88	-1.56	
7,933.0	88.70	179.30	6,419.5	-1,752.5	52.7	1,752.4	2.69	-1.56	-2.19	
7,964.0	89.30	179.60	6,420.0	-1,783.5	53.0	1,783.4	2.16	1.94	0.97	
7,996.0	88.90	181.40	6,420.5	-1,815.5	52.7	1,815.4	5.76	-1.25	5.63	
8,028.0	88.90	180.90	6,421.2	-1,847.4	52.0	1,847.3	1.56	0.00	-1.56	
8,060.0	89.00	181.00	6,421.7	-1,879.4	51.5	1,879.3	0.44	0.31	0.31	
8,092.0	90.00	181.90	6,422.0	-1,911.4	50.7	1,911.3	4.20	3.13	2.81	
8,123.0	90.80	181.20	6,421.8	-1,942.4	49.9	1,942.3	3.43	2.58	-2.26	
8,155.0	90.60	181.60	6,421.4	-1,974.4	49.1	1,974.3	1.40	-0.63	1.25	
8,186.0	90.70	181.00	6,421.1	-2,005.4	48.4	2,005.3	1.96	0.32	-1.94	
8,218.0	91.00	181.20	6,420.6	-2,037.4	47.8	2,037.3	1.13	0.94	0.63	
8,250.0	91.60	180.90	6,419.9	-2,069.4	47.2	2,069.3	2.10	1.88	-0.94	
8,282.0	91.70	180.30	6,418.9	-2,101.4	46.8	2,101.3	1.90	0.31	-1.88	
8,313.0	91.10	180.70	6,418.2	-2,132.3	46.6	2,132.2	2.33	-1.94	1.29	
8,345.0	90.70	181.60	6,417.7	-2,164.3	45.9	2,164.2	3.08	-1.25	2.81	
8,377.0	90.20	181.60	6,417.4	-2,196.3	45.0	2,196.2	1.56	-1.56	0.00	
8,409.0	88.80	181.60	6,417.7	-2,228.3	44.1	2,228.2	4.38	-4.38	0.00	
8,440.0	89.00	182.80	6,418.3	-2,259.3	42.9	2,259.2	3.92	0.65	3.87	
8,472.0	89.30	182.30	6,418.8	-2,291.2	41.5	2,291.2	1.82	0.94	-1.56	
8,503.0	89.60	181.90	6,419.1	-2,322.2	40.4	2,322.1	1.61	0.97	-1.29	
8,535.0	90.00	181.90	6,419.2	-2,354.2	39.3	2,354.1	1.25	1.25	0.00	
8,566.0	90.20	181.80	6,419.1	-2,385.2	38.3	2,385.1	0.72	0.65	-0.32	
8,598.0	89.40	181.40	6,419.2	-2,417.2	37.4	2,417.1	2.80	-2.50	-1.25	
8,630.0	89.70	180.90	6,419.5	-2,449.2	36.8	2,449.1	1.82	0.94	-1.56	
8,661.0	89.80	181.60	6,419.6	-2,480.2	36.1	2,480.1	2.28	0.32	2.26	
8,693.0	90.00	181.60	6,419.7	-2,512.1	35.2	2,512.1	0.63	0.63	0.00	
8,725.0	90.00	181.20	6,419.7	-2,544.1	34.4	2,544.1	1.25	0.00	-1.25	
8,757.0	88.50	183.20	6,420.1	-2,576.1	33.2	2,576.0	7.81	-4.69	6.25	
8,788.0	88.60	183.30	6,420.9	-2,607.0	31.5	2,607.0	0.46	0.32	0.32	
8,820.0	88.70	182.60	6,421.6	-2,639.0	29.8	2,638.9	2.21	0.31	-2.19	
8,851.0	89.00	182.10	6,422.3	-2,670.0	28.5	2,669.9	1.88	0.97	-1.61	
8,883.0	89.70	182.60	6,422.6	-2,701.9	27.2	2,701.9	2.69	2.19	1.56	
8,915.0	90.00	183.00	6,422.7	-2,733.9	25.7	2,733.8	1.56	0.94	1.25	
8,946.0	90.10	182.80	6,422.7	-2,764.8	24.1	2,764.8	0.72	0.32	-0.65	
8,978.0	90.50	183.50	6,422.5	-2,796.8	22.3	2,796.8	2.52	1.25	2.19	
9,010.0	90.80	183.30	6,422.2	-2,828.7	20.4	2,828.7	1.13	0.94	-0.63	
9,041.0	91.00	183.00	6,421.7	-2,859.7	18.7	2,859.7	1.16	0.65	-0.97	
9,073.0	91.70	183.90	6,420.9	-2,891.6	16.8	2,891.6	3.56	2.19	2.81	
9,105.0	92.60	183.50	6,419.7	-2,923.5	14.7	2,923.5	3.08	2.81	-1.25	
9,136.0	91.50	183.90	6,418.6	-2,954.4	12.7	2,954.4	3.78	-3.55	1.29	
9,168.0	91.80	184.40	6,417.7	-2,986.4	10.4	2,986.3	1.82	0.94	1.56	
9,200.0	91.30	183.00	6,416.8	-3,018.3	8.4	3,018.3	4.64	-1.56	-4.38	
9,232.0	91.50	182.60	6,416.0	-3,050.2	6.8	3,050.2	1.40	0.63	-1.25	
9,263.0	90.20	181.40	6,415.6	-3,081.2	5.7	3,081.2	5.71	-4.19	-3.87	
9,295.0	90.30	181.20	6,415.4	-3,113.2	5.0	3,113.2	0.70	0.31	-0.63	
9,326.0	88.90	181.40	6,415.7	-3,144.2	4.3	3,144.2	4.56	-4.52	0.65	
9,358.0	88.70	182.10	6,416.3	-3,176.2	3.3	3,176.1	2.27	-0.63	2.19	
9,390.0	88.70	181.60	6,417.1	-3,208.1	2.3	3,208.1	1.56	0.00	-1.56	
9,421.0	88.70	181.90	6,417.8	-3,239.1	1.3	3,239.1	0.97	0.00	0.97	
9,453.0	88.70	180.90	6,418.5	-3,271.1	0.6	3,271.1	3.12	0.00	-3.13	

Company:	Whiting Oil & Gas	Local Co-ordinate Reference:	Well Wildhorse #06-0634H
Project:	SEC.6-T9N-R59W	TVD Reference:	WELL @ 5201.5ft (Original Well Elev)
Site:	Wildhorse #06-0634H Pad Sec.6-T9N-R59W	MD Reference:	WELL @ 5201.5ft (Original Well Elev)
Well:	Wildhorse #06-0634H	North Reference:	True
Wellbore:	Wellbore #1	Survey Calculation Method:	Minimum Curvature
Design:	Wellbore #1	Database:	Landmark

Survey									
Measured Depth (ft)	Inclination (°)	Azimuth (°)	Vertical Depth (ft)	+N/-S (ft)	+E/-W (ft)	Vertical Section (ft)	Dogleg Rate (°/100ft)	Build Rate (°/100ft)	Turn Rate (°/100ft)
9,485.0	88.60	180.90	6,419.2	-3,303.1	0.1	3,303.1	0.31	-0.31	0.00
9,516.0	88.60	181.60	6,420.0	-3,334.1	-0.6	3,334.1	2.26	0.00	2.26
9,548.0	89.30	181.40	6,420.6	-3,366.0	-1.5	3,366.0	2.28	2.19	-0.63
9,579.0	89.10	180.90	6,421.0	-3,397.0	-2.1	3,397.0	1.74	-0.65	-1.61
9,611.0	88.70	181.00	6,421.6	-3,429.0	-2.6	3,429.0	1.29	-1.25	0.31
9,643.0	88.60	180.90	6,422.4	-3,461.0	-3.1	3,461.0	0.44	-0.31	-0.31
9,674.0	87.80	182.50	6,423.4	-3,492.0	-4.1	3,492.0	5.77	-2.58	5.16
9,706.0	88.10	181.90	6,424.5	-3,523.9	-5.3	3,523.9	2.10	0.94	-1.88
9,738.0	89.70	182.60	6,425.1	-3,555.9	-6.5	3,555.9	5.46	5.00	2.19
9,770.0	92.30	182.60	6,424.6	-3,587.9	-8.0	3,587.9	8.13	8.13	0.00
9,801.0	92.90	181.90	6,423.1	-3,618.8	-9.2	3,618.8	2.97	1.94	-2.26
9,833.0	92.70	182.30	6,421.6	-3,650.8	-10.4	3,650.8	1.40	-0.63	1.25
9,864.0	91.80	181.20	6,420.4	-3,681.7	-11.3	3,681.7	4.58	-2.90	-3.55
9,896.0	91.60	181.60	6,419.4	-3,713.7	-12.1	3,713.7	1.40	-0.63	1.25
9,928.0	90.90	180.00	6,418.7	-3,745.7	-12.6	3,745.7	5.46	-2.19	-5.00
9,959.0	91.40	180.70	6,418.1	-3,776.7	-12.7	3,776.7	2.77	1.61	2.26
9,991.0	91.30	180.90	6,417.3	-3,808.7	-13.2	3,808.7	0.70	-0.31	0.63
10,022.0	89.30	180.70	6,417.2	-3,839.7	-13.6	3,839.7	6.48	-6.45	-0.65
10,054.0	89.00	180.00	6,417.7	-3,871.7	-13.8	3,871.7	2.38	-0.94	-2.19
10,086.0	89.00	178.90	6,418.2	-3,903.6	-13.5	3,903.7	3.44	0.00	-3.44
10,117.0	89.10	179.50	6,418.7	-3,934.6	-13.1	3,934.7	1.96	0.32	1.94
10,149.0	89.10	179.30	6,419.2	-3,966.6	-12.7	3,966.6	0.62	0.00	-0.63
10,181.0	89.10	178.80	6,419.7	-3,998.6	-12.2	3,998.6	1.56	0.00	-1.56
10,212.0	89.40	179.80	6,420.1	-4,029.6	-11.8	4,029.6	3.37	0.97	3.23
10,244.0	90.10	180.00	6,420.3	-4,061.6	-11.8	4,061.6	2.28	2.19	0.63
10,276.0	91.10	180.00	6,419.9	-4,093.6	-11.8	4,093.6	3.13	3.13	0.00
10,326.0	91.00	180.00	6,419.0	-4,143.6	-11.8	4,143.6	0.20	-0.20	0.00
TARGET BHL 660'FSL & 1942'FEL									

Checked By: _____	Approved By: _____	Date: _____
-------------------	--------------------	-------------