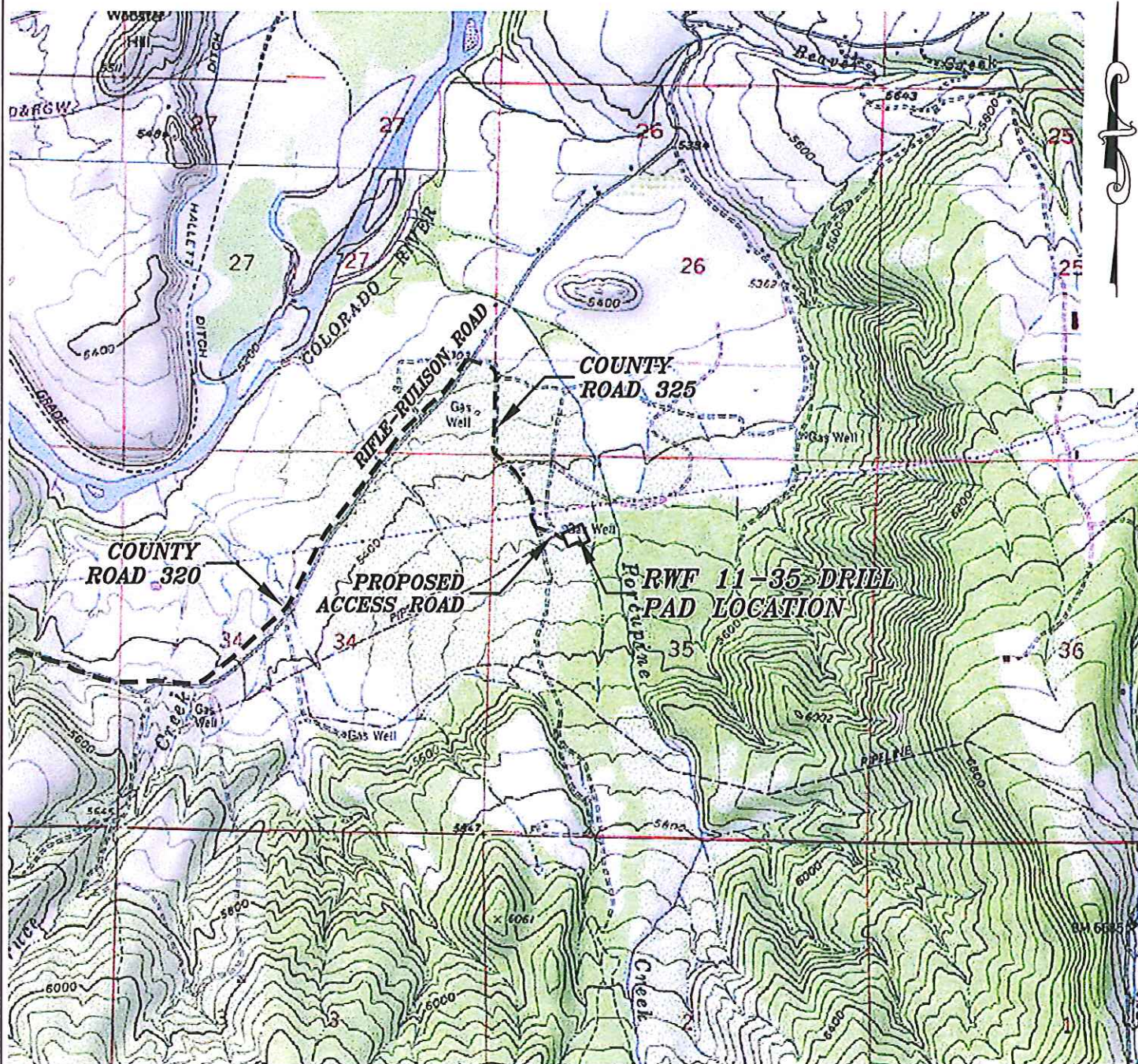


Section 35
T. 6 S., R 94 W



1000 0 2000

GRAPHIC SCALE IN FEET
1 INCH = 2000 FEET

ACCESS DESCRIPTION:

FROM THE INTERSECTION OF STATE HIGHWAY 6 AND COUNTY ROAD 323 (RULISON ROAD) NORTH OF RULISON, PROCEED SOUTHERLY ALONG COUNTY ROAD 323 (RULISON ROAD) ± 1.1 MILES TO THE INTERSECTION WITH COUNTY ROAD 309 (RULISON PARACHUTE ROAD), PROCEED LEFT IN AN EASTERLY DIRECTION ± 2.3 MILES TO THE INTERSECTION WITH COUNTY ROAD 320 (RIFLE RULISON ROAD), PROCEED RIGHT IN AN EASTERLY DIRECTION ± 2.4 MILES TO THE INTERSECTION WITH COUNTY ROAD 325, PROCEED RIGHT IN A SOUTHERLY DIRECTION TO AN INTERSECTION WITH A DIRT/GRAVEL ROAD, PROCEED LEFT IN AN EASTERLY DIRECTION ± 0.1 MILES TO THE RWF 11-35 DRILL PAD LOCATION, AS SHOWN HEREON.

136 East Third Street
Rifle, Colorado 81650
Ph. (970) 625-2720
Fax (970) 625-2773



BOOKCLIFF
Survey Services, Inc.

SCALE: 1" = 2000'
DATE: 1/27/12
PLAT: 5 of 7
PROJECT: Valley
DFT: cws

Construction Plan Prepared for:
WPXENERGY

WPX Energy Rocky Mountain, LLC

RWF 11-35 Drill Pad - Plat 5
ACCESS ROAD & TOPO MAP