

DRILL STEM TEST REPORT

Prepared For: **Vecta Oil & Gas Ltd**

575 Union Blvd #208
Lakewood Co. 80228

ATTN: Ryan Scribner

Snowmass #44-32

32-12s-47w Cheyenne CO

Start Date: 2012.10.12 @ 18:58:05

End Date: 2012.10.13 @ 03:26:09

Job Ticket #: 49352 DST #: 1

Trilobite Testing, Inc

PO Box 362 Hays, KS 67601

ph: 785-625-4778 fax: 785-625-5620

Printed: 2012.10.18 @ 13:04:08

Vecta Oil & Gas Ltd 32-12s-47w Cheyenne CO Snowmass #44-32 DST # 1 Cherokee 2012.10.12



**TRILOBITE
TESTING, INC.**

DRILL STEM TEST REPORT

Vecta Oil & Gas Ltd

575 Union Blvd #208
Lakewood Co. 80228

ATTN: Ryan Scribner

32-12s-47w Cheyenne CO

Snowmass #44-32

Job Ticket: 49352

DST#: 1

Test Start: 2012.10.12 @ 18:58:05

GENERAL INFORMATION:

Formation: **Cherokee**

Deviated: No Whipstock: ft (KB)

Time Tool Opened: 21:52:20

Time Test Ended: 03:26:09

Test Type: Conventional Bottom Hole (Initial)

Tester: Andy Carreira

Unit No: 39

Interval: **5027.00 ft (KB) To 5061.00 ft (KB) (TVD)**

Total Depth: 5061.00 ft (KB) (TVD)

Hole Diameter: 7.88 inches Hole Condition: Fair

Reference Elevations: 4528.00 ft (KB)

4517.00 ft (CF)

KB to GR/CF: 11.00 ft

Serial #: 8372 Outside

Press@RunDepth: 53.78 psig @ 5028.00 ft (KB)

Start Date: 2012.10.12

End Date:

2012.10.13

Capacity: 8000.00 psig

Last Calib.: 2012.10.13

Start Time: 18:58:05

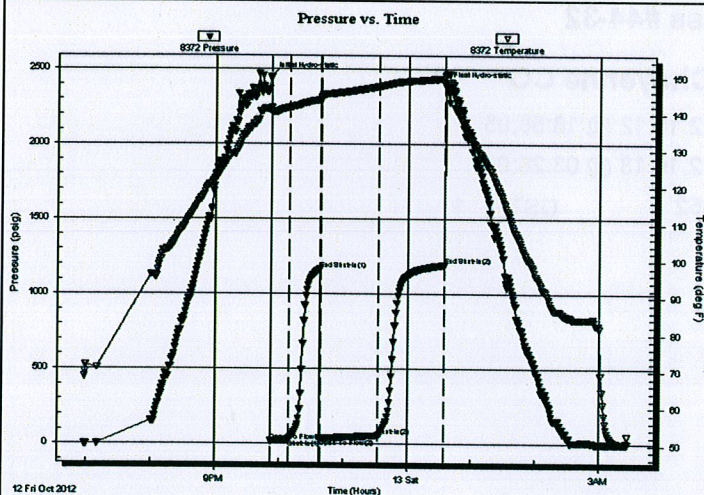
End Time:

03:26:10

Time On Btm: 2012.10.12 @ 21:51:30

Time Off Btm: 2012.10.13 @ 00:34:59

TEST COMMENT: IF:(15min) 1/4" Blow
IS:(30min) No Return
FF:(45min) 1" Blow decreased to 1/2"
FSI:(60min) No Return



PRESSURE SUMMARY

Time (Min.)	Pressure (psig)	Temp (deg F)	Annotation
0	2448.79	141.50	Initial Hydro-static
1	17.03	140.70	Open To Flow (1)
18	28.69	141.76	Shut-In(1)
47	1164.61	143.84	End Shut-In(1)
48	30.36	144.37	Open To Flow (2)
101	53.78	147.47	Shut-In(2)
163	1191.11	149.69	End Shut-In(2)
164	2389.84	150.43	Final Hydro-static

Recovery

Length (ft)	Description	Volume (bbl)
80.00	Mud w / oil spks in tool	0.39

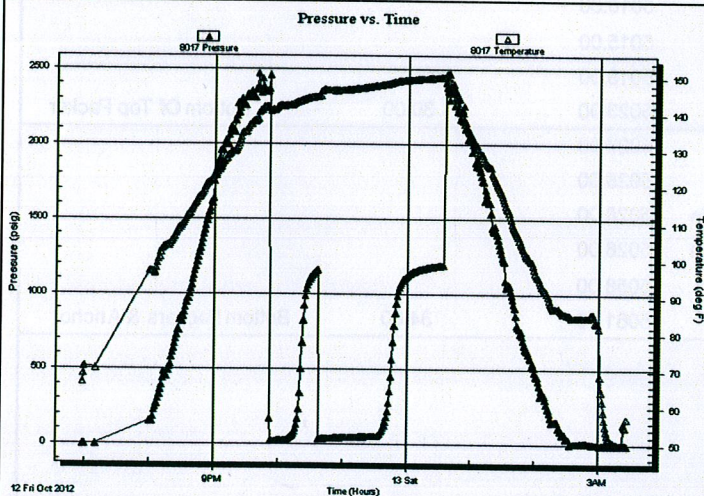
Gas Rates

	Choke (inches)	Pressure (psig)	Gas Rate (Mcf/d)
--	----------------	-----------------	------------------



Test Start: 2012.10.12 @ 18:58:05

TEST COMMENT: IF:(15min) 1/4" Blow
ISL:(30min) No Return
FF:(45min) 1" Blow decreased to 1/2"
FSL:(60min) No Return



Time (Min.)	Pressure (psig)	Temp (deg F)	Annotation
----------------	--------------------	-----------------	------------

1.00	1.00	1.00	1.00
2.00	2.00	2.00	2.00
3.00	3.00	3.00	3.00
4.00	4.00	4.00	4.00
5.00	5.00	5.00	5.00
6.00	6.00	6.00	6.00
7.00	7.00	7.00	7.00
8.00	8.00	8.00	8.00
9.00	9.00	9.00	9.00
10.00	10.00	10.00	10.00
11.00	11.00	11.00	11.00
12.00	12.00	12.00	12.00
13.00	13.00	13.00	13.00
14.00	14.00	14.00	14.00
15.00	15.00	15.00	15.00
16.00	16.00	16.00	16.00
17.00	17.00	17.00	17.00
18.00	18.00	18.00	18.00
19.00	19.00	19.00	19.00
20.00	20.00	20.00	20.00
21.00	21.00	21.00	21.00
22.00	22.00	22.00	22.00
23.00	23.00	23.00	23.00
24.00	24.00	24.00	24.00
25.00	25.00	25.00	25.00
26.00	26.00	26.00	26.00
27.00	27.00	27.00	27.00
28.00	28.00	28.00	28.00
29.00	29.00	29.00	29.00
30.00	30.00	30.00	30.00
31.00	31.00	31.00	31.00
32.00	32.00	32.00	32.00
33.00	33.00	33.00	33.00
34.00	34.00	34.00	34.00
35.00	35.00	35.00	35.00
36.00	36.00	36.00	36.00
37.00	37.00	37.00	37.00
38.00	38.00	38.00	38.00
39.00	39.00	39.00	39.00
40.00	40.00	40.00	40.00
41.00	41.00	41.00	41.00
42.00	42.00	42.00	42.00
43.00	43.00	43.00	43.00
44.00	44.00	44.00	44.00
45.00	45.00	45.00	45.00
46.00	46.00	46.00	46.00
47.00	47.00	47.00	47.00
48.00	48.00	48.00	48.00
49.00	49.00	49.00	49.00
50.00	50.00	50.00	50.00
51.00	51.00	51.00	51.00
52.00	52.00	52.00	52.00
53.00	53.00	53.00	53.00
54.00	54.00	54.00	54.00
55.00	55.00	55.00	55.00
56.00	56.00	56.00	56.00
57.00	57.00	57.00	57.00
58.00	58.00	58.00	58.00
59.00	59.00	59.00	59.00
60.00	60.00	60.00	60.00
61.00	61.00	61.00	61.00
62.00	62.00	62.00	62.00
63.00	63.00	63.00	63.00
64.00	64.00	64.00	64.00
65.00	65.00	65.00	65.00
66.00	66.00	66.00	66.00
67.00	67.00	67.00	67.00
68.00	68.00	68.00	68.00
69.00	69.00	69.00	69.00
70.00	70.00	70.00	70.00
71.00	71.00	71.00	71.00
72.00	72.00	72.00	72.00
73.00	73.00	73.00	73.00
74.00	74.00	74.00	74.00
75.00	75.00	75.00	75.00
76.00	76.00	76.00	76.00
77.00	77.00	77.00	77.00
78.00	78.00	78.00	78.00
79.00	79.00	79.00	79.00
80.00	80.00	80.00	80.00
81.00	81.00	81.00	81.00
82.00	82.00	82.00	82.00
83.00	83.00	83.00	83.00
84.00	84.00	84.00	84.00
85.00	85.00	85.00	85.00
86.00	86.00	86.00	86.00
87.00	87.00	87.00	87.00
88.00	88.00	88.00	88.00
89.00	89.00	89.00	89.00
90.00	90.00	90.00	90.00
91.00	91.00	91.00	91.00
92.00	92.00	92.00	92.00
93.00	93.00	93.00	93.00
94.00	94.00	94.00	94.00
95.00	95.00	95.00	95.00
96.00	96.00	96.00	96.00
97.00	97.00	97.00	97.00
98.00	98.00	98.00	98.00
99.00	99.00	99.00	99.00
100.00	100.00	100.00	100.00
101.00	101.00	101.00	101.00
102.00	102.00	102.00	102.00
103.00	103.00	103.00	103.00
104.00	104.00	104.00	104.00
105.00	105.00	105.00	105.00
106.00	106.00	106.00	106.00
107.00	107.00	107.00	107.00
108.00	108.00	108.00	108.00
109.00	109.00	109.00	109.00
110.00	110.00	110.00	110.00
111.00	111.00	111.00	111.00
112.00	112.00	112.00	112.00
113.00	113.00	113.00	113.00
114.00	114.00	114.00	114.00
115.00	115.00	115.00	115.00
116.00	116.00	116.00	116.00
117.00	117.00	117.00	117.00
118.00	118.00	118.00	118.00
119.00	119.00	119.00	119.00
120.00	120.00	120.00	120.00
121.00	121.00	121.00	121.00
122.00	122.00	122.00	122.00
123.00	123.00	123.00	123.00
124.00	124.00	124.00	124.00
125.00	125.00	125.00	125.00
126.00	126.00	126.00	126.00
127.00	127.00	127.00	127.00
128.00	128.00	128.00	128.00
129.00	129.00	129.00	129.00
130.00	130.00	130.00	130.00
131.00	131.00	131.00	131.00
132.00	132.00	132.00	132.00
133.00	133.00	133.00	133.00
134.00	134.00	134.00	134.00
135.00	135.00	135.00	135.00
136.00	136.00	136.00	136.00
137.00	137.00	137.00	137.00
138.00	138.00	138.00	138.00
139.00	139.00	139.00	139.00
140.00	140.00	140.00	140.00
141.00	141.00	141.00	141.00
142.00	142.00	142.00	142.00
143.00	143.00	143.00	143.00
144.00	144.00	144.00	144.00
145.00	145.00	145.00	145.00
146.00	146.00	146.00	146.00
147.00	147.00	147.00	147.00
148.00	148.00	148.00	148.00
149.00	149.00	149.00	149.00
150.00	150.00	150.00	150.00
151.00	151.00	151.00	151.00
152.00	152.00	152.00	152.00
153.00	153.00	153.00	153.00
154.00	154.00	154.00	154.00
155.00	155.00	155.00	155.00
156.00	156.00	156.00	156.00
157.00	157.00	157.00	157.00
158.00	158.00	158.00	158.00
159.00	159.00	159.00	159.00
160.00	160.00	160.00	160.00
161.00	161.00	161.00	161.00
162.00	162.00	162.00	162.00
163.00	163.00	163.00	163.00
164.00	164.00	164.00	164.00
165.00	165.00	165.00	165.00
166.00	166.00	166.00	166.00
167.00	167.00	167.00	167.00
168.00	168.00	168.00	168.00
169.00	169.00	169.00	169.00
170.00	170.00	170.00	170.00
171.00	171.00	171.00	171.00
172.00	172.00	172.00	172.00
173.00	173.00	173.00	173.00
174.00	174.00	174.00	174.00
175.00	175.00	175.00	175.00
176.00	176.00	176.00	176.00
177.00	177.00	177.00	177.00
178.00	178.00	178.00	178.00
179.00	179.00	179.00	179.00
180.00	180.00	180.00	180.00
181.00	181.00	181.00	181.00
182.00	182.00	182.00	182.00
183.00	183.00	183.00	183.00
184.00	184.00	184.00	184.00
185.00	185.00	185.00	185.00
186.00	186.00	186.00	186.00
187.00	187.00	187.00	187.00
188.00	188.00	188.00	188.00
189.00	189.00	189.00	189.00
190.00	190.00	190.00	190.00
191.00	191.00	191.00	191.00
192.00	192.00	192.00	192.00
193.00	193.00	193.00	193.00
194.00	194.00	194.00	194.00
195.00	195.00	195.00	195.00
196.00	196.00	196.00	196.00
197.00	197.00	197.00	197.00
198.00	198.00	198.00	198.00
199.00	199.00	199.00	199.00
200.00	200.00	200.00	200.00
201.00	201.00	201.00	201.00
202.00	202.00	202.00	202.00
203.00	203.00	203.00	203.00
204.00	204.00	204.00	204.00
205.00	205.00	205.00	205.00
206.00	206.00	206.00	206.00
207.00	207.00	207.00	207.00
208.00	208.00	208.00	208.00
209.00	209.00	209.00	209.00
210.00	210.00	210.00	210.00
211.00	211.00	211.00	211.00
212.00	212.00	212.00	212.00
213.00	213.00	213.00	213.00
214.00	214.00	214.00	214.00
215.00	215.00	215.00	215.00
216.00	216.00	216.00	216.00
217.00	217.00	217.00	217.00
218.00	218.00	218.00	218.00
219.00	219.00	219.00	219.00
220.00	220.00	220.00	220.00
221.00	221.00	221.00	221.00
222.00	222.00	222.00	222.00
223.00	223.00	223.00	223.00
224.00	224.00	224.00	224.00
225.00	225.00	225.00	225.00
226.00	226.00	226.00	226.00
227.00	227.00	227.00	227.00
228.00	228.00	228.00	228.00
229.00	229.00	229.00	229.00
230.00	230.00	230.00	230.00
231.00	231.00	231.00	231.00
232.00	232.00	232.00	232.00
233.00	233.00	233.00	233.00
234.00	234.00	234.00	234.00
235.00	235.00	235.00	235.00
236.00	236.00	236.00	236.00
237.00	237.00	237.00	237.00
238.00	238.00	238.00	238.00
239.00	239.00	239.00	239.00
240.00	240.00	240.00	240.00
241.00	241.00	241.00	241.00
242.00	242.00	242.00	242.00
243.00	243.00	243.00	243.00
244.00	244.00	244.00	244.00
245.00	245.00	245.00	245.00
246.00	246.00	246.00	246.00
247.00	247.00	247.00	247.00
248.00	248.00	248.00	248.00
249.00	249.00	249.00	249.00
250.00	250.00	250.00	250.00
251.00	251.00	251.00	251.00
252.00	252.00	252.00	252.00
253.00	253.00	253.00	253.00
254.00	254.00	254.00	254.00
255.00	255.00	255.00	255.00
256.00	256.00	256.00	256.00
257.00	257.00	257.00	257.00
258.00	258.00	258.00	258.00
259.00	259.00	259.00	259.00
260.00	260.00	260.00	260.00
261.00	261.00	261.00	261.00
262.00	262.00	262.00	262.00
263.00	263.00	263.00	263.00
264.00	264.00	264.00	264.00
265.00	265.00	265.00	265.00
266.00	266.00	266.00	266.00
267.00	267.00	267.00	267.00

Length (ft)	Description	Volume (bbl)
80.00	Mud w / oil spks in tool	0.39

	Choke (inches)	Pressure (psig)	Gas Rate (Mcf/d)
--	----------------	-----------------	------------------



**TRILOBITE
TESTING, INC.**

DRILL STEM TEST REPORT

TOOL DIAGRAM

Vecta Oil & Gas Ltd

32-12s-47w Cheyenne CO

575 Union Blvd #208
Lakewood Co. 80228

Snowmass #44-32

Job Ticket: 49352

DST#: 1

ATTN: Ryan Scribner

Test Start: 2012.10.12 @ 18:58:05

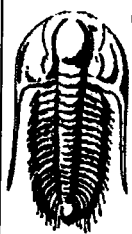
Tool Information

Drill Pipe:	Length: 4721.00 ft	Diameter: 3.80 inches	Volume: 66.22 bbl	Tool Weight: 2500.00 lb
Heavy Wt. Pipe:	Length: 0.00 ft	Diameter: 2.70 inches	Volume: 0.00 bbl	Weight set on Packer: 24000.00 lb
Drill Collar:	Length: 296.36 ft	Diameter: 2.25 inches	Volume: 1.46 bbl	Weight to Pull Loose: 78000.00 lb
			Total Volume: 67.68 bbl	Tool Chased 0.00 ft
Drill Pipe Above KB:	20.36 ft			String Weight: Initial 70000.00 lb
Depth to Top Packer:	5027.00 ft			Final 71000.00 lb
Depth to Bottom Packer:	ft			
Interval between Packers:	34.00 ft			
Tool Length:	64.00 ft			
Number of Packers:	2	Diameter: 7.88 inches		
Tool Comments:				

Tool Description

Tool Description	Length (ft)	Serial No.	Position	Depth (ft)	Accum. Lengths
Change Over Sub	1.00			4998.00	
Shut In Tool	5.00			5003.00	
Sampler	2.00			5005.00	
Hydraulic tool	5.00			5010.00	
Jars	5.00			5015.00	
Safety Joint	3.00			5018.00	
Packer	5.00			5023.00	30.00 Bottom Of Top Packer
Packer	4.00			5027.00	
Stubb	1.00			5028.00	
Recorder	0.00	8017	Inside	5028.00	
Recorder	0.00	8372	Outside	5028.00	
Perforations	30.00			5058.00	
Bullnose	3.00			5061.00	34.00 Bottom Packers & Anchor

Total Tool Length: 64.00



TRILOBITE
TESTING, INC.

DRILL STEM TEST REPORT

FLUID SUMMARY

Vecta Oil & Gas Ltd

32-12s-47w Cheyenne CO

575 Union Blvd #208
Lakewood Co. 80228

Snowmass #44-32

Job Ticket: 49352

DST#: 1

ATTN: Ryan Scribner

Test Start: 2012.10.12 @ 18:58:05

Mud and Cushion Information

Mud Type: Gel Chem

Cushion Type:

Mud Weight: 9.00 lb/gal

Cushion Length:

ft

Oil API:

deg API

Viscosity: 53.00 sec/qt

Cushion Volume:

bbl

Water Salinity:

ppm

Water Loss: 6.39 in³

Gas Cushion Type:

Resistivity: ohm.m

Gas Cushion Pressure:

psig

Salinity: 500.00 ppm

Filter Cake: inches

Recovery Information

Recovery Table

Length ft	Description	Volume bbl
80.00	Mud w / oil spks in tool	0.393

Total Length: 80.00 ft Total Volume: 0.393 bbl

Num Fluid Samples: 0

Num Gas Bombs: 0

Serial #:

Laboratory Name:

Laboratory Location:

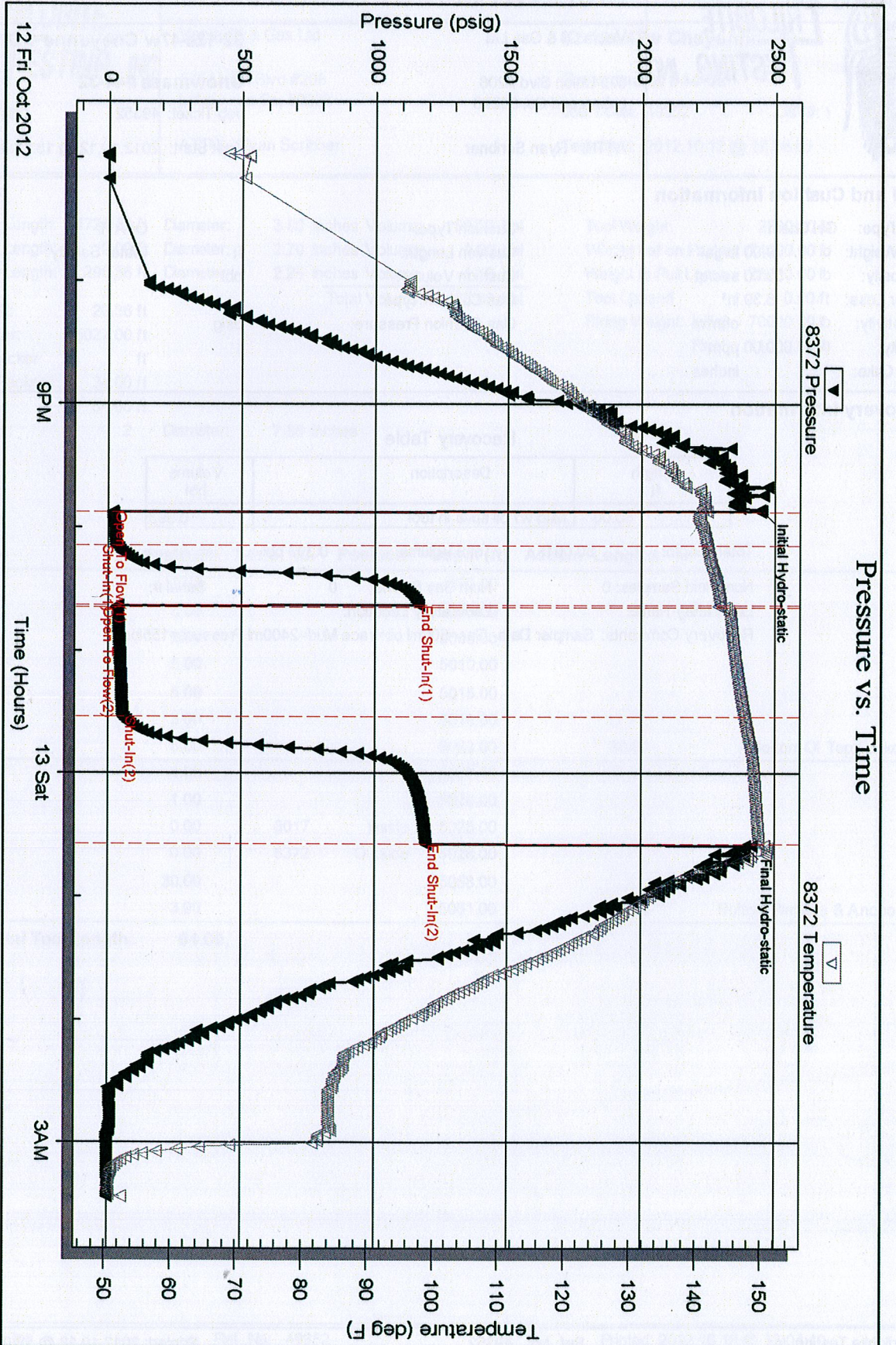
Recovery Comments: Sampler Data- Gas=600ml oil=trace Mud=2400ml Pressure=155lbs

Serial #: 8372

Outside Vecia Oil & Gas Ltd

Snow mass #44-32

DST Test Number: 1



Trilobite Testing, Inc

Ref. No: 49352

Printed: 2012.10.18 @ 13:04:12

Serial #: 8017

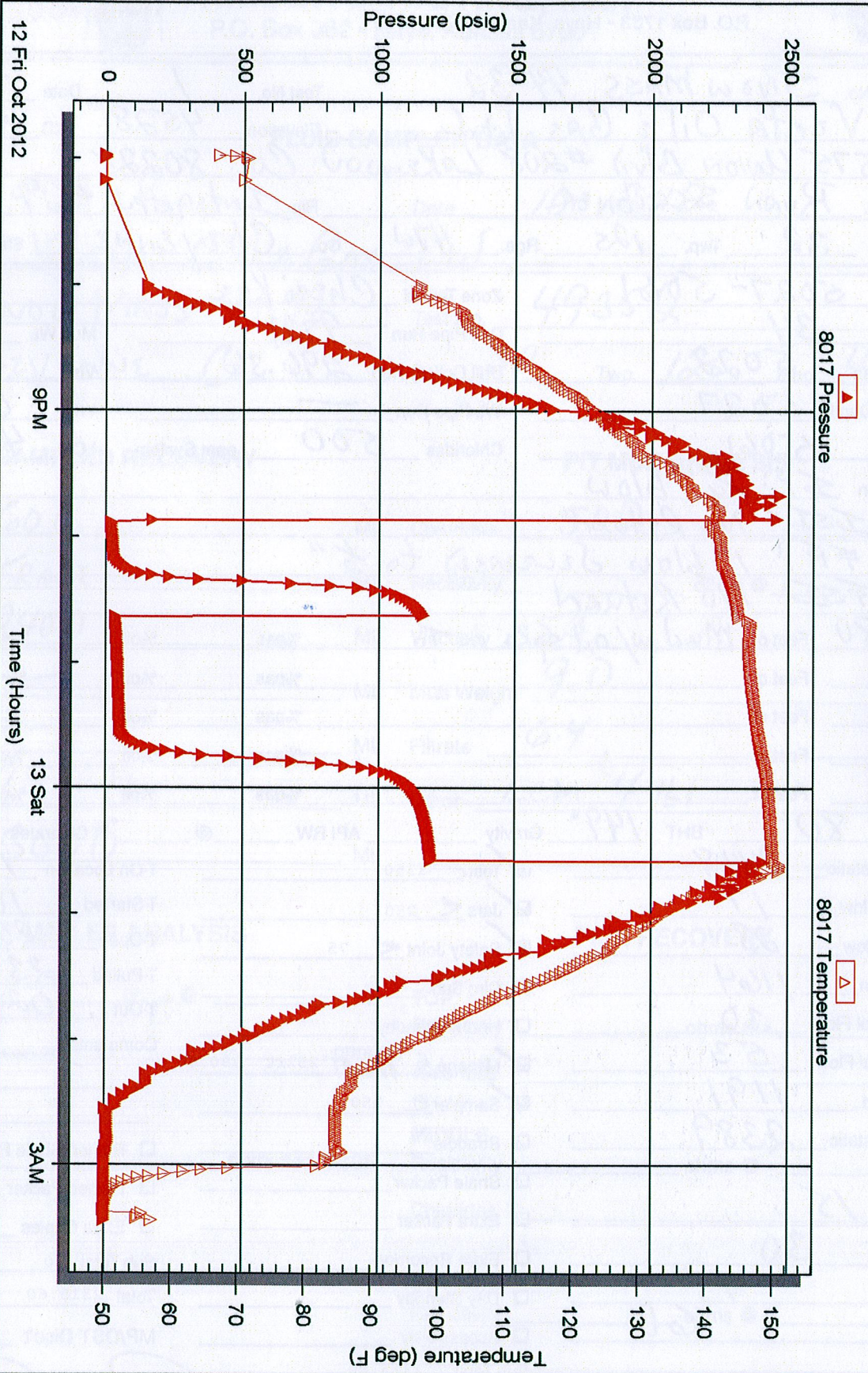
Inside

Vectra Oil & Gas Ltd

Snow mass #44-32

DST Test Number: 1

Pressure vs. Time





TRILOBITE TESTING INC.

P.O. Box 1733 • Hays, Kansas 67601

Test Ticket

NO. 49352

Well Name & No. SNOW MASS 44-32 Test No. 1 Date 10-12-12
 Company Vecta Oil & Gas Ltd Elevation 4528 KB 4517 GL
 Address 575 UNION BLVD #208 LAKEWOOD CO. 80228
 Co. Rep / Geo. RYAN SCRIBNER Rig Integrity #69
 Location: Sec. 32 Twp. 12S Rge. 47W Co. Cheyenne State CO.

Interval Tested 5027-5061 Zone Tested Chero Kee
 Anchor Length 34 Drill Pipe Run 4721 Mud Wt. 9.0
 Top Packer Depth 5022 Drill Collars Run 296.36 Vis 53
 Bottom Packer Depth 5027 Wt. Pipe Run — WL 6.4
 Total Depth 5061 Chlorides 500 ppm System LCM 4:16

Blow Description IF: 1/4" blow
ISI: NO Return
FF: 1" blow decreased to 1/2"
FSI: NO Return

Rec <u>80</u>	Feet of <u>Mud w/oil spks in to</u>	%gas	%oil	%water	%mud
Rec	Feet of	%gas	%oil	%water	%mud
Rec	Feet of	%gas	%oil	%water	%mud
Rec	Feet of	%gas	%oil	%water	%mud
Rec	Feet of	%gas	%oil	%water	%mud

Rec Total 80' BHT 149' Gravity — API RW — @ — °F Chlorides — ppm

(A) Initial Hydrostatic 2448
 (B) First Initial Flow 17
 (C) First Final Flow 28
 (D) Initial Shut-In 1164
 (E) Second Initial Flow 30
 (F) Second Final Flow 53
 (G) Final Shut-In 1191
 (H) Final Hydrostatic 2389

☒ Test 1350
☒ Jars 250
☒ Safety Joint 75
☐ Circ Sub
☐ Hourly Standby
☒ Mileage 416.5 252rt 390.60
☒ Sampler 250

T-On Location 18:06
 T-Started 18:58
 T-Open 20:53
 T-Pulled 23:23
 T-Out 02:26

Comments

Initial Open 15
 Initial Shut-In 30
 Final Flow 45
 Final Shut-In 60

☐ Straddle
☐ Shale Packer
☐ Extra Packer
☐ Extra Recorder
☐ Day Standby
☐ Accessibility

☐ Ruined Shale Packer
☐ Ruined Packer
☐ Extra Copies
 Sub Total 0
 Total 2315.60
 MP/DST Disc't

Sub Total 2315.60

Approved By

Our Representative

[Signature]

Trilobite Testing Inc. shall not be liable for damaged or any kind of the property or personnel of the one for whom a test is made, or for any loss suffered or sustained directly or indirectly, through the use of its equipment, or its statements or opinion concerning the results of any test, tools lost or damaged in the hole shall be paid for at cost by the party for whom the test is made.



TRILOBITE TESTING, INC.

P.O. Box 362 • Hays, Kansas 67601

FLUID SAMPLER DATA

Ticket No. 49352 Date 10-12-12
Company Name Vecta Oil & Gas Ltd.
Lease SNOW MASS 44-32 Test No. 49352
County Cheyenne Co. Sec. 32 Twp. 12s Rng. 47w

SAMPLER RECOVERY

Gas 600 ML
Oil TRACE ML
Mud 2400 ML
Water — ML
Other — ML
Pressure 155 lbs ML
Total 3000 ML

PIT MUD ANALYSIS

Chlorides 500 ppm.
Resistivity _____ ohms @ _____ F
Viscosity 53
Mud Weight 9.0
Filtrate 6.4
Other LCM 4 lbs

SAMPLER ANALYSIS

Resistivity _____ ohms @ _____ F
Chlorides _____ ppm.
Gravity _____ corrected @60F

PIPE RECOVERY

TOP
Resistivity _____ ohms @ _____ F
Chlorides _____ ppm.
MIDDLE
Resistivity _____ ohms @ _____ F
Chlorides _____ ppm.
BOTTOM
Resistivity _____ ohms @ _____ F
Chlorides _____ ppm.