

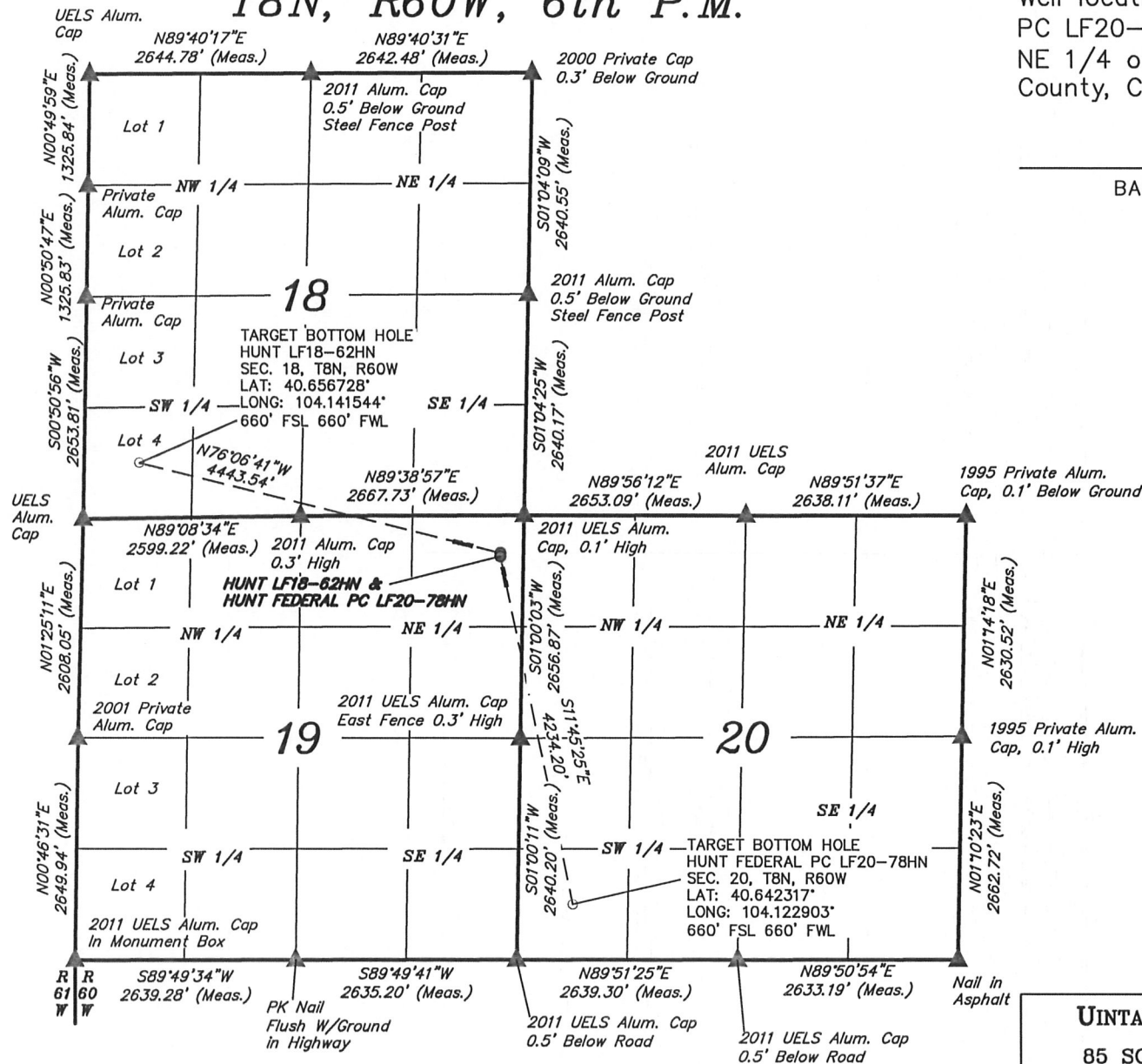
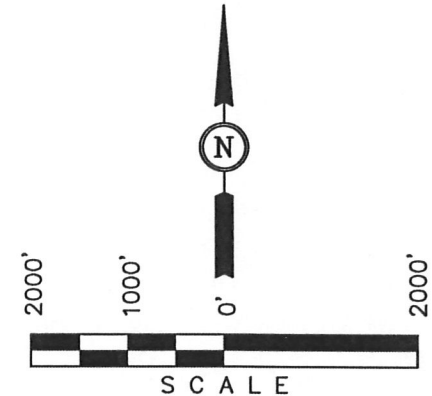
MULTI-WELL PLAN T8N, R60W, 6th P.M.

NOBLE ENERGY, INC.

Well location, HUNT LF18-62HN & HUNT FEDERAL PC LF20-78HN, located as shown in the NE 1/4 NE 1/4 of Section 19, T8N, R60W, 6th P.M., Weld County, Colorado.

BASIS OF BEARINGS

BASIS OF BEARINGS IS A G.P.S. OBSERVATION.



LEGEND:

- = PROPOSED WELL HEAD.
- = TARGET BOTTOM HOLE
- ▲ = SECTION CORNERS LOCATED.

UINTAH ENGINEERING & LAND SURVEYING
85 SOUTH 200 EAST - VERNAL, UTAH 84078
(435) 789-1017

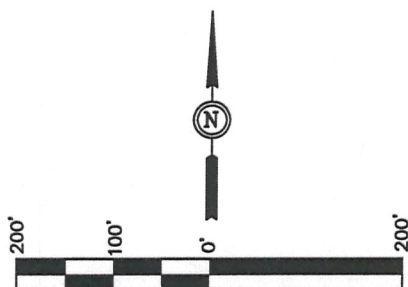
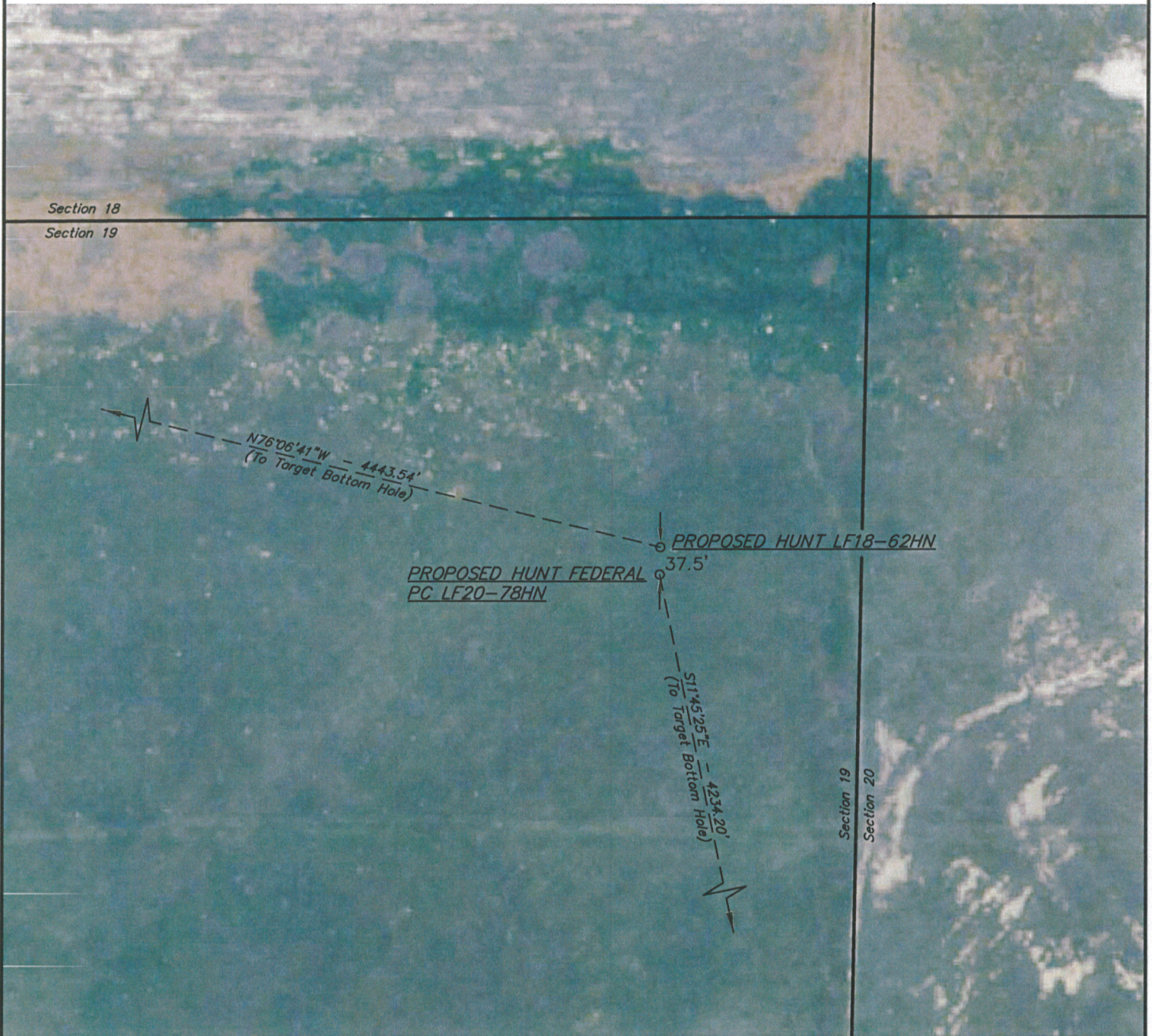
SCALE 1" = 2000'	DATE SURVEYED: 07-16-12	DATE DRAWN: 09-05-12
PARTY DARREN SHANKS K.H. S.R.L.	REFERENCES G.L.O. PLAT	
WEATHER WARM	FILE NOBLE ENERGY, INC.	

NOBLE ENERGY, INC.

MULTI-WELL PLAN

HUNT LF18-62HN & HUNT FEDERAL PC LF20-78HN
SECTION 19, T8N, R60W, 6th P.M.

DATE: 09-06-12
DRAWN BY: S.R.L.



PAD DETAILS:
WELL HEAD SPACING = 37.5'