

WELL LOCATION PLAT T8N, R60W, 6th P.M.

NOBLE ENERGY, INC.

Well location, HUNT LF18-62HN (SURFACE LOCATION), located as shown in the NE 1/4 NE 1/4 of Section 19, T8N, R60W, 6th P.M., Weld County, Colorado.

BASIS OF ELEVATION

SPOT ELEVATION LOCATED AT THE NORTHEAST CORNER OF SECTION 2, T9N, R61W, 6th P.M. TAKEN FROM THE GROVER SOUTH, QUADRANGLE, COLORADO, WELD COUNTY, 7.5 MINUTE QUAD (TOPOGRAPHIC MAP) PUBLISHED BY THE UNITED STATES DEPARTMENT OF THE INTERIOR, GEOLOGICAL SURVEY. SAID ELEVATION IS MARKED AS BEING 5043 FEET.

BASIS OF BEARINGS

BASIS OF BEARINGS IS A G.P.S. OBSERVATION.



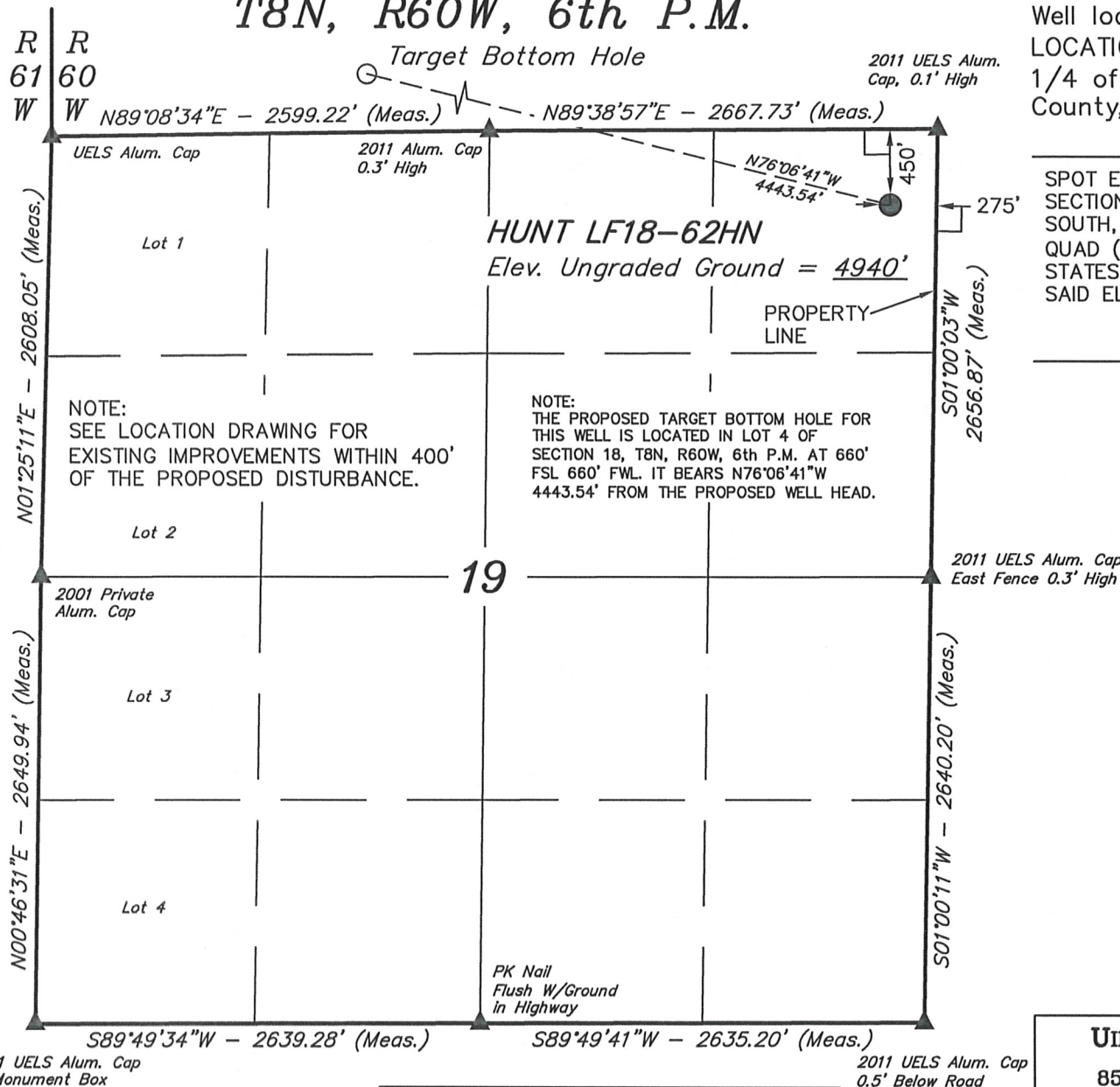
CERTIFICATE

THIS IS TO CERTIFY THAT THE ABOVE PLAT WAS PREPARED FROM FIELD NOTES OF ACTUAL SURVEYS MADE BY ME OR UNDER MY SUPERVISION AND THAT THE SAME ARE TRUE AND CORRECT TO THE BEST OF MY KNOWLEDGE AND BELIEF.

ROBERT L. SHANKS
REGISTERED LAND SURVEYOR
REGISTRATION NO. 17492
STATE OF COLORADO
09-11-12

UINTAH ENGINEERING & LAND SURVEYING
85 SOUTH 200 EAST - VERNAL, UTAH 84078
(435) 789-1017

SCALE 1" = 1000'	DATE SURVEYED: 07-16-12	DATE DRAWN: 09-05-12
PARTY DARREN SHANKS K.H. S.R.L.	REFERENCES G.L.O. PLAT	
WEATHER WARM	FILE NOBLE ENERGY, INC.	



LEGEND:

- = 90° SYMBOL
- = PROPOSED WELL HEAD.
- = SECTION CORNERS LOCATED.

FEATURE TABLE		
EXISTING FEATURE	DIRECTION	LENGTH
PROPERTY LINE	EAST	275'

PDOP = 2.0

SHEET 1 OF 2

NAD 83 (SURFACE LOCATION)
LATITUDE = 40°39'13.67" (40.653797)
LONGITUDE = 104°07'33.61" (104.126003)

WELL LOCATION PLAT T8N, R60W, 6th P.M.

NOBLE ENERGY, INC.

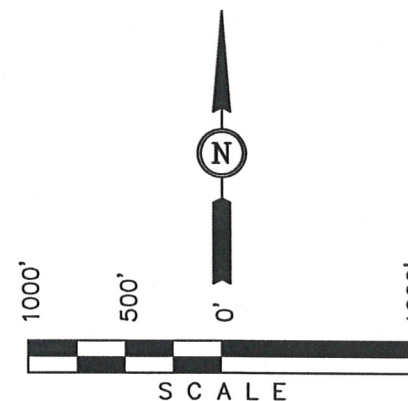
Well location, HUNT LF18-62HN (TARGET BOTTOM HOLE), located as shown in Lot 4 of Section 18, T8N, R60W, 6th P.M., Weld County, Colorado.

BASIS OF ELEVATION

SPOT ELEVATION LOCATED AT THE NORTHEAST CORNER OF SECTION 2, T9N, R61W, 6th P.M. TAKEN FROM THE GROVER SOUTH, QUADRANGLE, COLORADO, WELD COUNTY, 7.5 MINUTE QUAD (TOPOGRAPHIC MAP) PUBLISHED BY THE UNITED STATES DEPARTMENT OF THE INTERIOR, GEOLOGICAL SURVEY. SAID ELEVATION IS MARKED AS BEING 5043 FEET.

BASIS OF BEARINGS

BASIS OF BEARINGS IS A G.P.S. OBSERVATION.



CERTIFICATE

THIS IS TO CERTIFY THAT THE ABOVE PLAT WAS PREPARED FROM FIELD NOTES OF ACTUAL SURVEYS MADE BY ME OR UNDER MY SUPERVISION AND THAT THE SAME ARE TRUE AND CORRECT TO THE BEST OF MY KNOWLEDGE AND BELIEF.

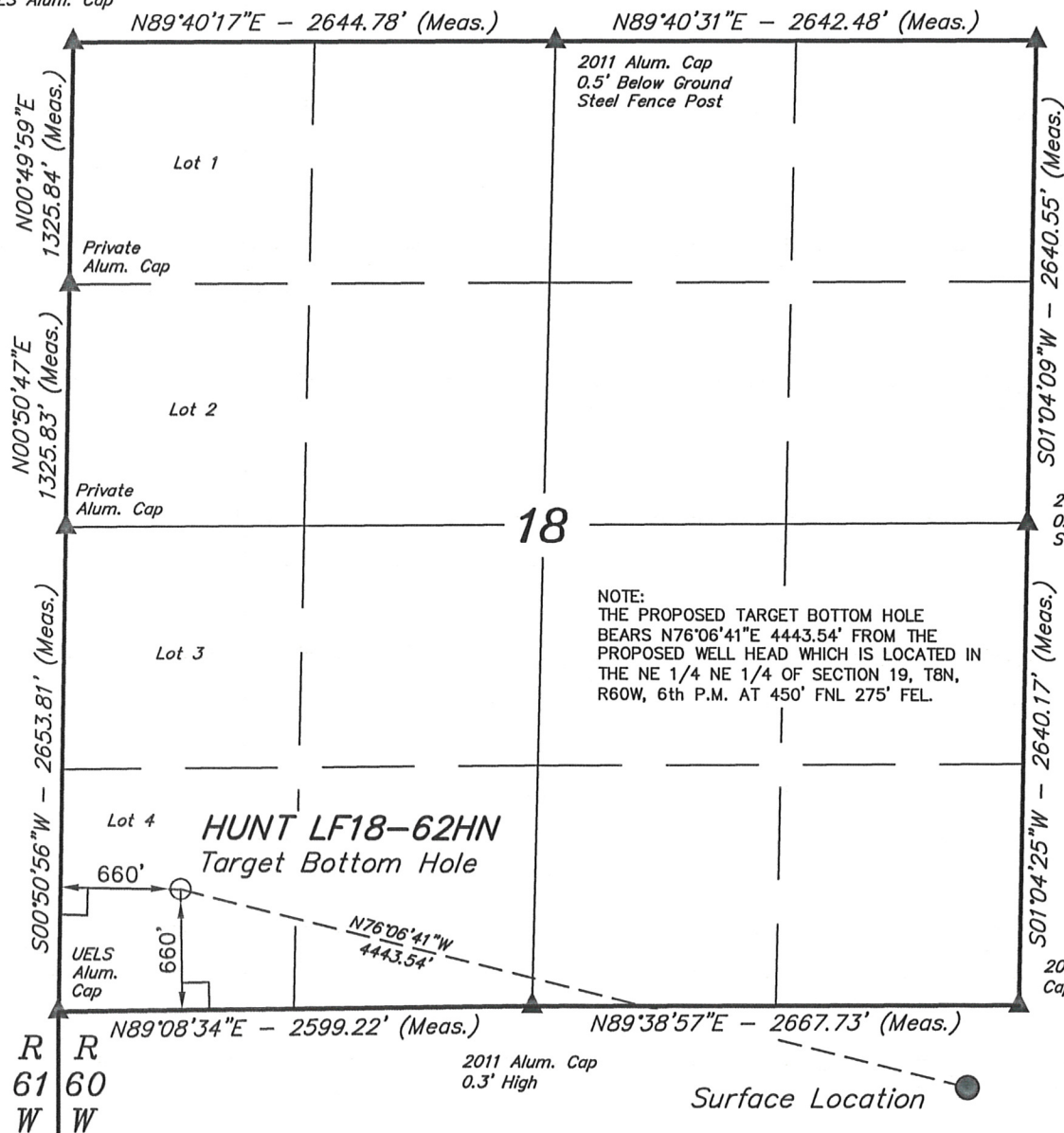
REGISTERED LAND SURVEYOR
REGISTRATION NO. 17402
STATE OF COLORADO

UINTAH ENGINEERING & LAND SURVEYING
85 SOUTH 200 EAST - VERNAL, UTAH 84078
(435) 789-1017

SCALE 1" = 1000'	DATE SURVEYED: 07-16-12	DATE DRAWN: 09-05-12
PARTY DARREN SHANKS K.H. S.R.L.	REFERENCES G.L.O. PLAT	
WEATHER WARM	FILE NOBLE ENERGY, INC.	

UELS Alum. Cap

2000 Private Cap
0.3' Below Ground



LEGEND:

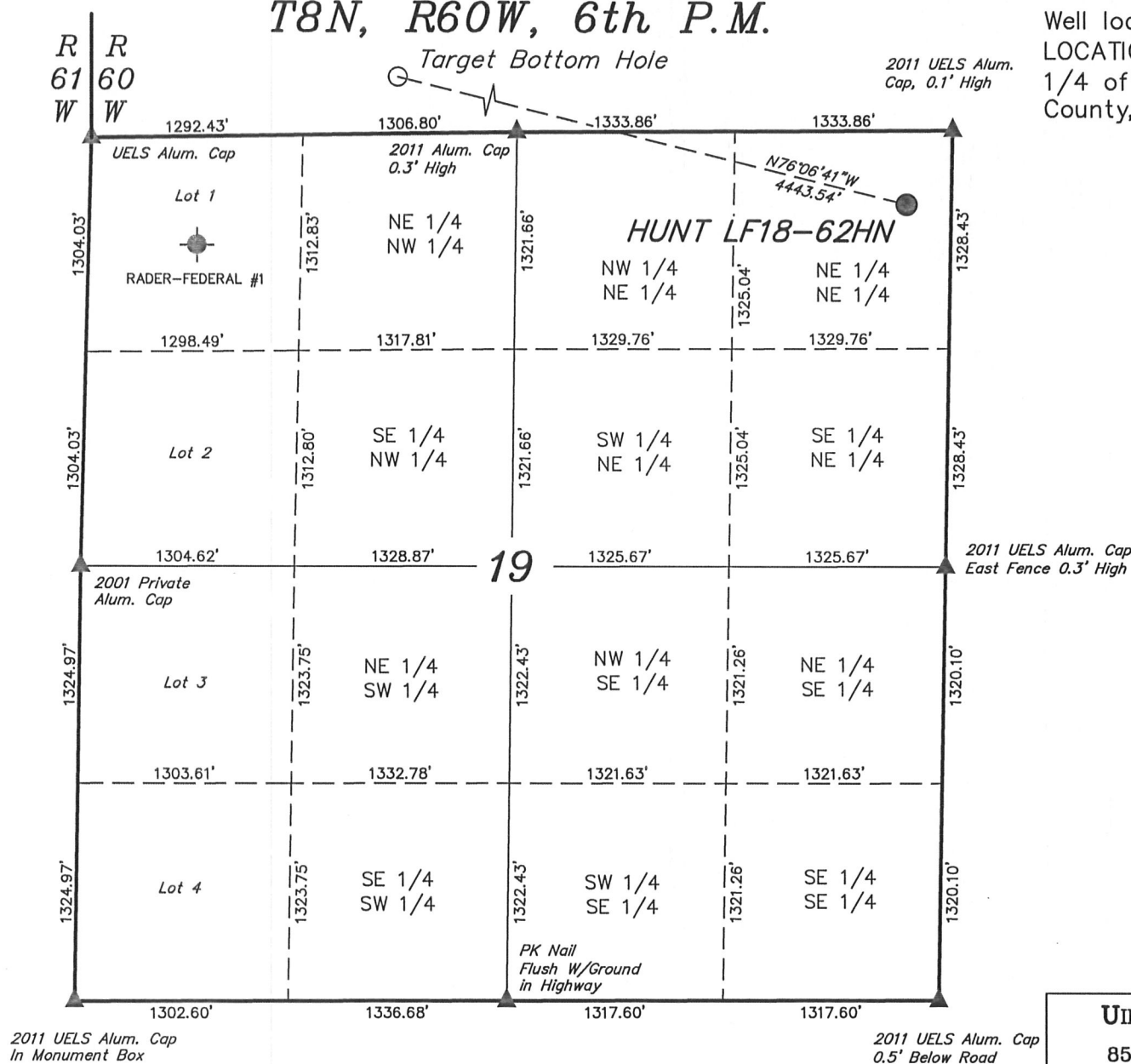
- └─┘ = 90° SYMBOL
- = PROPOSED WELL HEAD.
- ▲ = SECTION CORNERS LOCATED.

SHEET 2 OF 2

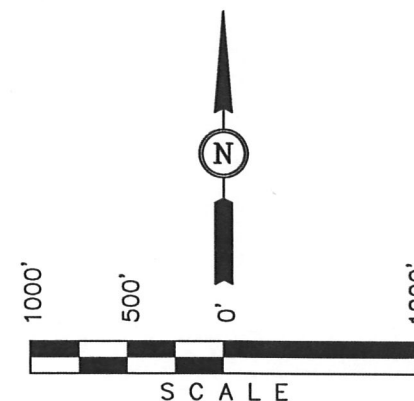
NAD 83 (TARGET BOTTOM HOLE)
LATITUDE = 40°39'24.22" (40.656728)
LONGITUDE = 104°08'29.56" (104.141544)

NOBLE ENERGY, INC.

Well location, HUNT LF18-62HN (SURFACE LOCATION), located as shown in the NE 1/4 NE 1/4 of Section 19, T8N, R60W, 6th P.M., Weld County, Colorado.



NOTE:
THE PROPOSED TARGET BOTTOM HOLE FOR
THIS WELL IS LOCATED IN LOT 4 OF
SECTION 18, T8N, R60W, 6th P.M. AT 660'
FSL 660' FWL. IT BEARS N76°06'41"W
4443.54' FROM THE PROPOSED WELL HEAD.



LEGEND:

- ▲ = SECTION CORNERS LOCATED.
● = PROPOSED WELL HEAD.
○ = BOTTOM HOLE
⬤ = ABANDONED WELLS

SHEET 1 OF 2

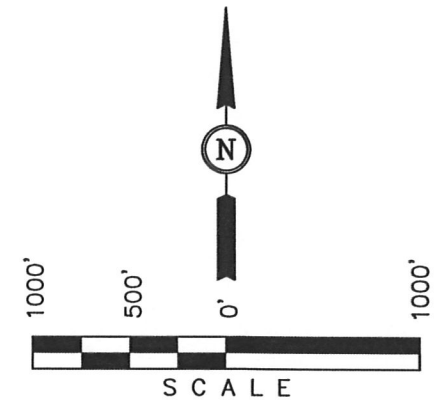
	WELL NAME	QTR-QTR	FOOTAGES	LATITUDE	LONGITUDE	ELEVATION	PDOF
1	RADER-FEDERAL #1	LOT 1	FROM COGCC DATA BASE	40.653144°	104.141664°	4947'	N/A

UTAH ENGINEERING & LAND SURVEYING
 85 SOUTH 200 EAST - VERNAL, UTAH 84078
 (435) 789-1017

SCALE 1" = 1000'	DATE SURVEYED: 07-16-12	DATE DRAWN: 09-05-12
PARTY DARREN SHANKS K.H. S.R.L.	REFERENCES G.L.O. PLAT	
WEATHER WARM	FILE NOBLE ENERGY, INC.	

NOBLE ENERGY, INC.

2000 Private Cap
0.3' Below Ground



NOTE:
THE PROPOSED TARGET BOTTOM HOLE
BEARS N76°06'41"E 4443.54' FROM THE
PROPOSED WELL HEAD WHICH IS LOCATED IN
THE NE 1/4 NE 1/4 OF SECTION 19, T8N,
R60W, 6th P.M. AT 450' FNL 275' FEL.

LEGEND:

- ▲ = SECTION CORNERS LOCATED.
● = PROPOSED WELL HEAD.
○ = BOTTOM HOLE
⊙ = ABANDONED WELLS

UINTAH ENGINEERING & LAND SURVEYING
85 SOUTH 200 EAST - VERNAL, UTAH 84078
(435) 789-1017

SCALE 1" = 1000'	DATE SURVEYED: 07-16-12	DATE DRAWN: 09-05-12
PARTY DARREN SHANKS K.H. S.R.L.	REFERENCES G.L.O. PLAT	
WEATHER WARM	FILE NOBLE ENERGY, INC.	

	WELL NAME	QTR-QTR	FOOTAGES	LATITUDE	LONGITUDE	ELEVATION	PDOP
1	KOOP #1	SE 1/4 NE 1/4	FROM COGCC DATA BASE	40.663904°	104.127264°	4948'	N/A
2	KOOP #1-A	SE 1/4 NE 1/4	FROM COGCC DATA BASE	40.663904°	104.127334°	4948'	N/A