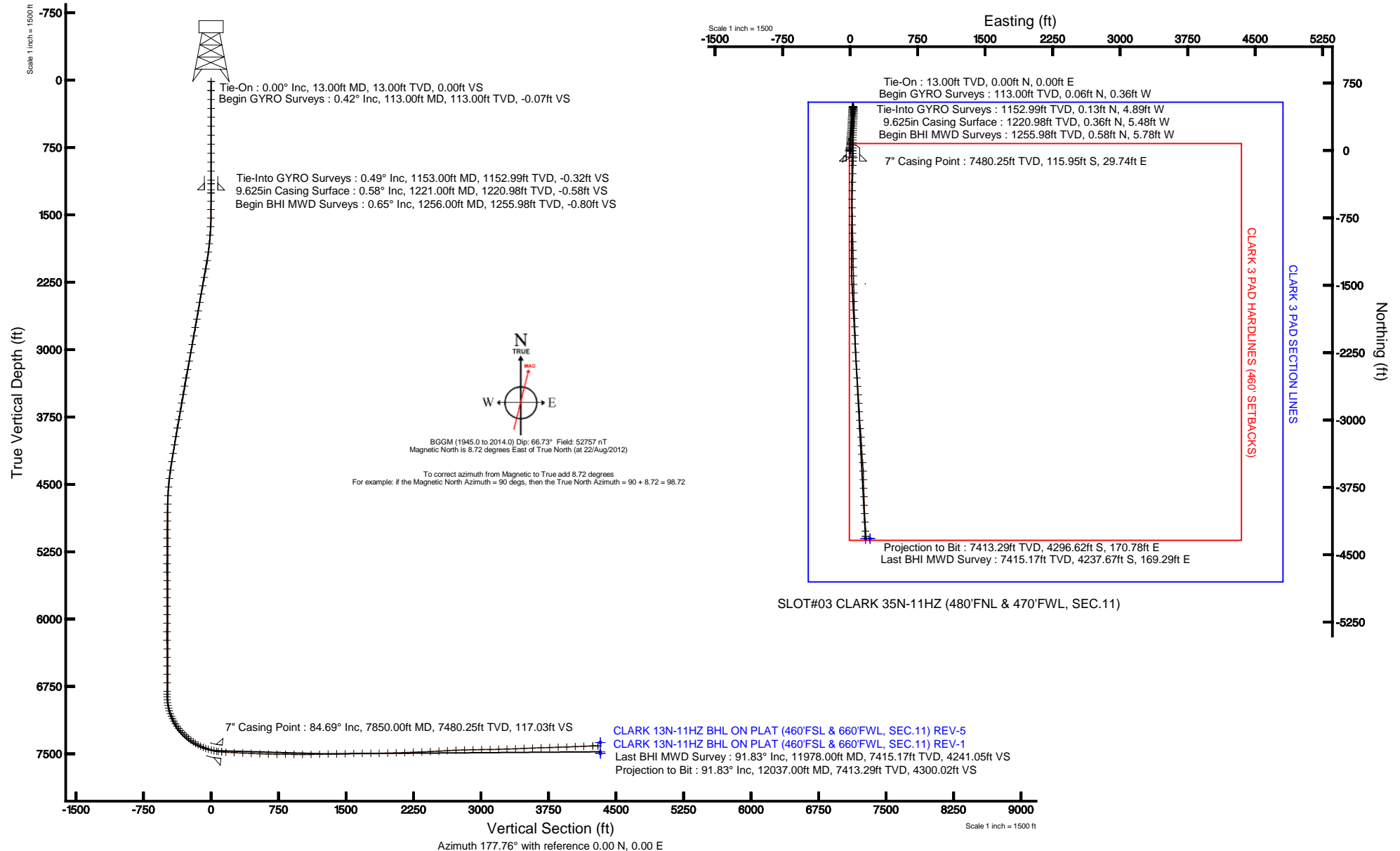


Location:	COLORADO	Slot:	SLOT#01 CLARK 13N-11HZ (540'FNL & 470'FWL, SEC.11)
Field:	WELD COUNTY (KERR MCGEE)	Well:	CLARK 13N-11HZ
Facility:	SEC.11-T1N-R66W	Wellbore:	CLARK 13N-11HZ PWB

Plot reference wellpath is CLARK 13N-11HZ (REV-C.0) PWP	
True vertical depths are referenced to ENSIGN 145 (RKB)	Grid System: NAD83 / Lambert Colorado SP, Northern Zone (501), US feet
Measured depths are referenced to ENSIGN 145 (RKB)	North Reference: True north
ENSIGN 145 (RKB) to Mean Sea Level: 5120 feet	Scale: True distance
Mean Sea Level to Mud line (At Slot: SLOT#01 CLARK 13N-11HZ (540FNL & 470FWL, SEC.11): 0 feet	Depths are in feet
Coordinates are in feet referenced to Slot	Created by: augunora on 12/Sep/2012





Actual Wellpath Report

CLARK 13N-11HZ AWP

Page 1 of 7



REFERENCE WELLPATH IDENTIFICATION

Operator	KERR-MCGEE OIL & GAS ONSHORE LP	Slot	SLOT#01 CLARK 13N-11HZ (540'FNL & 470'FWL, SEC.11)
Area	COLORADO	Well	CLARK 13N-11HZ
Field	WELD COUNTY (KERR MCGEE)	Wellbore	CLARK 13N-11HZ AWB
Facility	SEC.11-T1N-R66W		

REPORT SETUP INFORMATION

Projection System	NAD83 / Lambert Colorado SP, Northern Zone (501), US feet	Software System	WellArchitect® 3.0.0
North Reference	True	User	Augunora
Scale	0.999962	Report Generated	12/Sep/2012 at 12:24
Convergence at slot	0.48° East	Database/Source file	WA_ANADARKO/CLARK_13N-11HZ_AWB.xml

WELLPATH LOCATION

	Local coordinates		Grid coordinates		Geographic coordinates	
	North[ft]	East[ft]	Easting[US ft]	Northing[US ft]	Latitude	Longitude
Slot Location	0.00	0.00	3209320.61	1269845.23	40°04'18.091"N	104°45'07.348"W
Facility Reference Pt			3209320.61	1269845.23	40°04'18.091"N	104°45'07.348"W
Field Reference Pt			3197771.84	1268891.29	40°04'09.600"N	104°47'36.000"W

WELLPATH DATUM

Calculation method	Minimum curvature	ENSIGN 145 (RKB) to Facility Vertical Datum	5120.00ft
Horizontal Reference Pt	Slot	ENSIGN 145 (RKB) to Mean Sea Level	5120.00ft
Vertical Reference Pt	ENSIGN 145 (RKB)	ENSIGN 145 (RKB) to Mud Line at Slot (SLOT#01 CLARK 13N-11HZ (540'FNL & 470'FWL, SEC.11))	5120.00ft
MD Reference Pt	ENSIGN 145 (RKB)	Section Origin	N 0.00, E 0.00 ft
Field Vertical Reference	Mean Sea Level	Section Azimuth	177.72°



Actual Wellpath Report

CLARK 13N-11HZ AWP

Page 2 of 7



REFERENCE WELLPATH IDENTIFICATION

Operator	KERR-MCGEE OIL & GAS ONSHORE LP	Slot	SLOT#01 CLARK 13N-11HZ (540'FNL & 470'FWL, SEC.11)
Area	COLORADO	Well	CLARK 13N-11HZ
Field	WELD COUNTY (KERR MCGEE)	Wellbore	CLARK 13N-11HZ AWB
Facility	SEC.11-T1N-R66W		

WELLPATH DATA (151 stations) † = interpolated/extrapolated station

MD [ft]	Inclination [°]	Azimuth [°]	TVD [ft]	Vert Sect [ft]	North [ft]	East [ft]	Latitude	Longitude	DLS [°/100ft]	Comments
0.00†	0.000	278.990	0.00	0.00	0.00	0.00	40°04'18.091"N	104°45'07.348"W	0.00	
13.00	0.000	278.990	13.00	0.00	0.00	0.00	40°04'18.091"N	104°45'07.348"W	0.00	Tie-On
113.00	0.420	278.990	113.00	-0.07	0.06	-0.36	40°04'18.092"N	104°45'07.353"W	0.42	Begin GYRO Surveys
213.00	0.290	254.980	213.00	-0.09	0.05	-0.97	40°04'18.091"N	104°45'07.360"W	0.19	
313.00	0.200	252.040	313.00	0.02	-0.07	-1.38	40°04'18.090"N	104°45'07.366"W	0.09	
413.00	0.230	301.100	413.00	-0.05	-0.02	-1.72	40°04'18.091"N	104°45'07.370"W	0.18	
513.00	0.430	291.000	512.99	-0.31	0.22	-2.24	40°04'18.093"N	104°45'07.377"W	0.21	
613.00	0.160	119.020	612.99	-0.38	0.28	-2.47	40°04'18.094"N	104°45'07.380"W	0.59	
713.00	0.150	263.340	712.99	-0.30	0.20	-2.48	40°04'18.093"N	104°45'07.380"W	0.30	
813.00	0.210	275.400	812.99	-0.31	0.20	-2.79	40°04'18.093"N	104°45'07.384"W	0.07	
913.00	0.460	278.710	912.99	-0.41	0.28	-3.37	40°04'18.094"N	104°45'07.391"W	0.25	
1013.00	0.320	240.610	1012.99	-0.36	0.21	-4.01	40°04'18.093"N	104°45'07.400"W	0.29	
1113.00	0.390	273.470	1112.99	-0.27	0.09	-4.59	40°04'18.092"N	104°45'07.407"W	0.21	
1153.00	0.490	280.940	1152.99	-0.32	0.13	-4.89	40°04'18.092"N	104°45'07.411"W	0.29	Tie-Into GYRO Surveys
1256.00	0.650	308.300	1255.98	-0.80	0.58	-5.78	40°04'18.097"N	104°45'07.422"W	0.30	Begin BHI MWD Surveys
1349.00	0.790	319.650	1348.97	-1.65	1.39	-6.61	40°04'18.105"N	104°45'07.433"W	0.21	
1441.00	0.840	301.850	1440.96	-2.53	2.23	-7.60	40°04'18.113"N	104°45'07.446"W	0.28	
1536.00	1.530	350.220	1535.95	-4.18	3.85	-8.40	40°04'18.129"N	104°45'07.456"W	1.22	
1631.00	2.530	7.080	1630.89	-7.50	7.18	-8.36	40°04'18.162"N	104°45'07.456"W	1.22	
1726.00	3.740	3.370	1725.74	-12.66	12.35	-7.92	40°04'18.213"N	104°45'07.450"W	1.29	
1821.00	5.340	1.940	1820.44	-20.15	19.86	-7.59	40°04'18.287"N	104°45'07.446"W	1.69	
1915.00	7.130	3.250	1913.88	-30.32	30.06	-7.11	40°04'18.388"N	104°45'07.439"W	1.91	
2010.00	8.940	4.290	2007.94	-43.52	43.31	-6.22	40°04'18.519"N	104°45'07.428"W	1.91	
2105.00	10.260	3.430	2101.61	-59.27	59.12	-5.17	40°04'18.675"N	104°45'07.414"W	1.40	
2200.00	10.690	3.540	2195.03	-76.46	76.35	-4.11	40°04'18.846"N	104°45'07.401"W	0.45	
2295.00	10.410	2.970	2288.42	-93.77	93.72	-3.13	40°04'19.017"N	104°45'07.388"W	0.31	
2389.00	10.330	1.970	2380.89	-110.63	110.62	-2.40	40°04'19.184"N	104°45'07.379"W	0.21	
2484.00	9.820	2.020	2474.42	-127.21	127.23	-1.82	40°04'19.348"N	104°45'07.371"W	0.54	
2579.00	9.340	5.370	2568.10	-142.92	143.00	-0.81	40°04'19.504"N	104°45'07.358"W	0.77	
2674.00	10.770	6.410	2661.64	-159.34	159.50	0.90	40°04'19.667"N	104°45'07.336"W	1.52	
2769.00	10.850	5.480	2754.95	-176.97	177.22	2.75	40°04'19.842"N	104°45'07.313"W	0.20	
2863.00	10.010	4.610	2847.40	-193.85	194.17	4.25	40°04'20.010"N	104°45'07.293"W	0.91	
2958.00	10.100	7.160	2940.94	-210.27	210.67	5.95	40°04'20.173"N	104°45'07.271"W	0.48	
3053.00	10.620	3.030	3034.39	-227.20	227.67	7.45	40°04'20.341"N	104°45'07.252"W	0.95	
3148.00	10.350	3.080	3127.80	-244.41	244.94	8.37	40°04'20.512"N	104°45'07.240"W	0.28	
3243.00	10.920	3.490	3221.17	-261.86	262.44	9.38	40°04'20.684"N	104°45'07.227"W	0.61	
3338.00	10.760	2.860	3314.48	-279.65	280.28	10.37	40°04'20.861"N	104°45'07.215"W	0.21	
3432.00	9.820	3.650	3406.96	-296.36	297.04	11.32	40°04'21.026"N	104°45'07.202"W	1.01	
3527.00	9.450	1.860	3500.62	-312.20	312.92	12.09	40°04'21.183"N	104°45'07.193"W	0.50	
3622.00	9.950	4.230	3594.26	-328.13	328.90	12.94	40°04'21.341"N	104°45'07.181"W	0.67	
3717.00	9.950	5.140	3687.84	-344.42	345.26	14.28	40°04'21.503"N	104°45'07.164"W	0.17	
3812.00	10.110	5.400	3781.38	-360.83	361.74	15.80	40°04'21.666"N	104°45'07.145"W	0.18	
3906.00	9.620	1.030	3874.00	-376.84	377.81	16.72	40°04'21.825"N	104°45'07.133"W	0.95	
4001.00	9.470	1.860	3967.68	-392.56	393.55	17.12	40°04'21.980"N	104°45'07.128"W	0.21	
4096.00	9.020	357.640	4061.45	-407.81	408.81	17.07	40°04'22.131"N	104°45'07.128"W	0.86	



Actual Wellpath Report

CLARK 13N-11HZ AWP

Page 3 of 7



REFERENCE WELLPATH IDENTIFICATION

Operator	KERR-MCGEE OIL & GAS ONSHORE LP	Slot	SLOT#01 CLARK 13N-11HZ (540'FNL & 470'FWL, SEC.11)
Area	COLORADO	Well	CLARK 13N-11HZ
Field	WELD COUNTY (KERR MCGEE)	Wellbore	CLARK 13N-11HZ AWP
Facility	SEC.11-T1N-R66W		

WELLPATH DATA (151 stations)

MD [ft]	Inclination [°]	Azimuth [°]	TVD [ft]	Vert Sect [ft]	North [ft]	East [ft]	Latitude	Longitude	DLS [°/100ft]	Comments
4191.00	8.890	1.370	4155.29	-422.58	423.59	16.93	40°04'22.277"N	104°45'07.130"W	0.63	
4286.00	8.660	6.440	4249.18	-436.97	438.03	17.91	40°04'22.420"N	104°45'07.118"W	0.85	
4381.00	7.970	8.370	4343.18	-450.52	451.65	19.67	40°04'22.554"N	104°45'07.095"W	0.78	
4475.00	7.170	8.790	4436.36	-462.68	463.90	21.52	40°04'22.675"N	104°45'07.071"W	0.85	
4570.00	5.540	8.230	4530.77	-473.01	474.30	23.08	40°04'22.778"N	104°45'07.051"W	1.72	
4665.00	3.430	9.690	4625.48	-480.30	481.64	24.22	40°04'22.851"N	104°45'07.037"W	2.22	
4760.00	1.880	17.140	4720.37	-484.55	485.93	25.15	40°04'22.893"N	104°45'07.024"W	1.67	
4855.00	1.080	0.890	4815.34	-486.91	488.31	25.63	40°04'22.917"N	104°45'07.018"W	0.94	
4950.00	1.020	356.950	4910.32	-488.65	490.05	25.60	40°04'22.934"N	104°45'07.019"W	0.10	
5044.00	0.570	51.000	5004.32	-489.77	491.18	25.91	40°04'22.945"N	104°45'07.015"W	0.88	
5139.00	0.470	64.740	5099.31	-490.20	491.65	26.63	40°04'22.950"N	104°45'07.005"W	0.17	
5234.00	0.390	33.710	5194.31	-490.61	492.08	27.17	40°04'22.954"N	104°45'06.999"W	0.26	
5329.00	0.380	28.070	5289.31	-491.15	492.63	27.49	40°04'22.959"N	104°45'06.994"W	0.04	
5424.00	0.460	20.430	5384.31	-491.77	493.26	27.77	40°04'22.966"N	104°45'06.991"W	0.10	
5519.00	0.430	164.350	5479.30	-491.78	493.28	28.00	40°04'22.966"N	104°45'06.988"W	0.89	
5613.00	0.420	160.290	5573.30	-491.10	492.61	28.22	40°04'22.959"N	104°45'06.985"W	0.03	
5708.00	0.250	179.470	5668.30	-490.56	492.08	28.33	40°04'22.954"N	104°45'06.984"W	0.21	
5803.00	0.060	278.230	5763.30	-490.37	491.88	28.29	40°04'22.952"N	104°45'06.984"W	0.28	
5898.00	0.250	7.270	5858.30	-490.58	492.09	28.26	40°04'22.954"N	104°45'06.984"W	0.27	
5993.00	0.340	6.980	5953.30	-491.06	492.58	28.32	40°04'22.959"N	104°45'06.984"W	0.09	
6088.00	0.300	347.680	6048.30	-491.59	493.10	28.31	40°04'22.964"N	104°45'06.984"W	0.12	
6183.00	0.160	324.990	6143.30	-491.94	493.45	28.18	40°04'22.967"N	104°45'06.986"W	0.17	
6277.00	0.190	139.810	6237.30	-491.93	493.44	28.20	40°04'22.967"N	104°45'06.985"W	0.37	
6372.00	0.890	146.540	6332.29	-491.17	492.70	28.71	40°04'22.960"N	104°45'06.979"W	0.74	
6467.00	0.820	127.620	6427.28	-490.11	491.67	29.66	40°04'22.950"N	104°45'06.967"W	0.30	
6562.00	0.780	82.290	6522.27	-489.73	491.34	30.84	40°04'22.947"N	104°45'06.951"W	0.65	
6657.00	0.460	65.730	6617.27	-489.94	491.59	31.82	40°04'22.949"N	104°45'06.939"W	0.38	
6752.00	0.370	109.750	6712.26	-489.96	491.64	32.46	40°04'22.949"N	104°45'06.930"W	0.34	
6847.00	0.630	89.040	6807.26	-489.84	491.55	33.27	40°04'22.949"N	104°45'06.920"W	0.33	
6878.00	0.820	73.940	6838.26	-489.89	491.61	33.65	40°04'22.949"N	104°45'06.915"W	0.86	
6909.00	1.670	98.020	6869.25	-489.86	491.61	34.31	40°04'22.949"N	104°45'06.907"W	3.16	
6941.00	4.220	151.930	6901.21	-488.71	490.50	35.33	40°04'22.938"N	104°45'06.894"W	10.96	
6973.00	7.340	166.450	6933.05	-485.65	487.48	36.36	40°04'22.908"N	104°45'06.880"W	10.69	
7004.00	11.000	168.370	6963.64	-480.79	482.65	37.42	40°04'22.861"N	104°45'06.867"W	11.85	
7036.00	14.770	169.420	6994.83	-473.74	475.65	38.79	40°04'22.791"N	104°45'06.849"W	11.80	
7067.00	18.420	172.100	7024.54	-464.95	466.91	40.19	40°04'22.705"N	104°45'06.831"W	12.03	
7099.00	22.150	177.380	7054.55	-453.88	455.87	41.16	40°04'22.596"N	104°45'06.819"W	12.97	
7131.00	24.290	182.780	7083.96	-441.29	443.27	41.12	40°04'22.471"N	104°45'06.819"W	9.43	
7162.00	26.510	182.570	7111.96	-428.04	429.99	40.50	40°04'22.340"N	104°45'06.827"W	7.17	
7194.00	29.300	181.400	7140.24	-413.11	415.02	39.99	40°04'22.192"N	104°45'06.834"W	8.88	
7226.00	32.830	180.940	7167.64	-396.63	398.52	39.65	40°04'22.029"N	104°45'06.838"W	11.06	
7257.00	34.670	181.320	7193.42	-379.44	381.30	39.31	40°04'21.859"N	104°45'06.842"W	5.97	
7289.00	37.540	181.090	7219.27	-360.62	362.45	38.92	40°04'21.673"N	104°45'06.847"W	8.98	
7320.00	41.300	181.460	7243.21	-340.97	342.77	38.47	40°04'21.478"N	104°45'06.853"W	12.15	
7352.00	45.420	182.140	7266.47	-319.06	320.82	37.78	40°04'21.261"N	104°45'06.862"W	12.96	



Actual Wellpath Report

CLARK 13N-11HZ AWP
Page 4 of 7



REFERENCE WELLPATH IDENTIFICATION

Operator	KERR-MCGEE OIL & GAS ONSHORE LP	Slot	SLOT#01 CLARK 13N-11HZ (540'FNL & 470'FWL, SEC.11)
Area	COLORADO	Well	CLARK 13N-11HZ
Field	WELD COUNTY (KERR MCGEE)	Wellbore	CLARK 13N-11HZ AWP
Facility	SEC.11-T1N-R66W		

WELLPATH DATA (151 stations) † = interpolated/extrapolated station

MD [ft]	Inclination [°]	Azimuth [°]	TVD [ft]	Vert Sect [ft]	North [ft]	East [ft]	Latitude	Longitude	DLS [°/100ft]	Comments
7384.00	47.000	182.330	7288.62	-296.04	297.74	36.88	40°04'21.033"N	104°45'06.874"W	4.96	
7415.00	47.230	182.930	7309.71	-273.41	275.05	35.84	40°04'20.809"N	104°45'06.887"W	1.60	
7447.00	49.570	182.660	7330.96	-249.57	251.15	34.67	40°04'20.573"N	104°45'06.902"W	7.34	
7479.00	53.400	181.960	7350.88	-224.62	226.13	33.67	40°04'20.326"N	104°45'06.915"W	12.09	
7510.00	55.480	182.380	7368.91	-199.48	200.93	32.71	40°04'20.077"N	104°45'06.927"W	6.80	
7542.00	57.770	182.240	7386.51	-172.84	174.23	31.63	40°04'19.813"N	104°45'06.941"W	7.17	
7573.00	60.610	181.540	7402.39	-146.29	147.63	30.76	40°04'19.550"N	104°45'06.952"W	9.36	
7605.00	64.470	180.690	7417.14	-117.95	119.24	30.21	40°04'19.269"N	104°45'06.959"W	12.29	
7637.00	66.530	180.820	7430.41	-88.87	90.13	29.82	40°04'18.982"N	104°45'06.964"W	6.45	
7668.00	69.360	180.440	7442.05	-60.18	61.40	29.51	40°04'18.698"N	104°45'06.968"W	9.20	
7700.00	73.360	180.770	7452.28	-29.90	31.09	29.19	40°04'18.398"N	104°45'06.973"W	12.54	
7732.00	75.160	179.810	7460.96	0.86	0.29	29.03	40°04'18.094"N	104°45'06.975"W	6.32	
7763.00	77.880	179.420	7468.18	30.99	-29.85	29.24	40°04'17.796"N	104°45'06.972"W	8.86	
7795.00	81.300	179.590	7473.96	62.44	-61.32	29.51	40°04'17.485"N	104°45'06.968"W	10.70	
7812.00	83.240	179.560	7476.25	79.28	-78.16	29.63	40°04'17.319"N	104°45'06.967"W	11.41	
7850.00†	84.687	180.104	7480.25	117.04	-115.95	29.74	40°04'16.945"N	104°45'06.965"W	4.07	7" Casing Point
7896.00	86.440	180.760	7483.80	162.85	-161.81	29.40	40°04'16.492"N	104°45'06.970"W	4.07	
7991.00	87.010	181.660	7489.23	257.52	-256.63	27.39	40°04'15.555"N	104°45'06.996"W	1.12	
8086.00	87.720	181.480	7493.60	352.20	-351.50	24.79	40°04'14.617"N	104°45'07.029"W	0.77	
8181.00	87.260	181.240	7497.76	446.92	-446.38	22.54	40°04'13.680"N	104°45'07.058"W	0.55	
8276.00	87.470	181.020	7502.13	541.65	-541.26	20.67	40°04'12.742"N	104°45'07.082"W	0.32	
8370.00	88.740	179.060	7505.24	635.52	-635.20	20.61	40°04'11.814"N	104°45'07.083"W	2.48	
8465.00	89.450	179.280	7506.74	730.48	-730.18	21.98	40°04'10.875"N	104°45'07.065"W	0.78	
8560.00	89.540	178.760	7507.57	825.45	-825.16	23.61	40°04'09.937"N	104°45'07.044"W	0.56	
8655.00	89.510	178.490	7508.36	920.43	-920.13	25.89	40°04'08.998"N	104°45'07.015"W	0.29	
8750.00	89.380	178.200	7509.28	1015.42	-1015.09	28.63	40°04'08.060"N	104°45'06.980"W	0.33	
8845.00	91.170	179.370	7508.83	1110.40	-1110.06	30.64	40°04'07.121"N	104°45'06.954"W	2.25	
8940.00	91.450	179.460	7506.65	1205.33	-1205.03	31.61	40°04'06.183"N	104°45'06.941"W	0.31	
9034.00	90.860	178.490	7504.76	1299.29	-1298.99	33.29	40°04'05.254"N	104°45'06.920"W	1.21	
9129.00	90.640	178.410	7503.51	1394.27	-1393.95	35.86	40°04'04.316"N	104°45'06.887"W	0.25	
9224.00	91.270	178.630	7501.93	1489.25	-1488.90	38.32	40°04'03.377"N	104°45'06.855"W	0.70	
9319.00	91.500	179.520	7499.64	1584.20	-1583.86	39.85	40°04'02.439"N	104°45'06.835"W	0.97	
9414.00	90.680	178.440	7497.83	1679.15	-1678.83	41.54	40°04'01.500"N	104°45'06.814"W	1.43	
9509.00	90.520	178.820	7496.83	1774.14	-1773.80	43.81	40°04'00.562"N	104°45'06.784"W	0.43	
9603.00	90.030	177.700	7496.38	1868.13	-1867.75	46.67	40°03'59.634"N	104°45'06.748"W	1.30	
9698.00	91.260	178.120	7495.31	1963.12	-1962.68	50.13	40°03'58.695"N	104°45'06.703"W	1.37	
9793.00	92.270	178.430	7492.39	2058.07	-2057.59	52.99	40°03'57.757"N	104°45'06.666"W	1.11	
9888.00	91.780	178.410	7489.03	2153.00	-2152.49	55.61	40°03'56.820"N	104°45'06.633"W	0.52	
9983.00	92.560	177.550	7485.43	2247.93	-2247.36	58.95	40°03'55.882"N	104°45'06.590"W	1.22	
10078.00	92.490	176.280	7481.25	2342.83	-2342.13	64.06	40°03'54.946"N	104°45'06.524"W	1.34	
10173.00	92.340	176.370	7477.24	2437.72	-2436.85	70.14	40°03'54.010"N	104°45'06.446"W	0.18	
10267.00	92.770	176.640	7473.05	2531.60	-2530.58	75.87	40°03'53.083"N	104°45'06.372"W	0.54	
10362.00	93.770	175.710	7467.63	2626.41	-2625.22	82.20	40°03'52.148"N	104°45'06.291"W	1.44	
10456.00	92.190	176.240	7462.75	2720.24	-2718.85	88.78	40°03'51.223"N	104°45'06.206"W	1.77	
10551.00	91.490	176.770	7459.70	2815.16	-2813.63	94.57	40°03'50.286"N	104°45'06.132"W	0.92	



Actual Wellpath Report

CLARK 13N-11HZ AWP

Page 5 of 7



REFERENCE WELLPATH IDENTIFICATION

Operator	KERR-MCGEE OIL & GAS ONSHORE LP	Slot	SLOT#01 CLARK 13N-11HZ (540'FNL & 470'FWL, SEC.11)
Area	COLORADO	Well	CLARK 13N-11HZ
Field	WELD COUNTY (KERR MCGEE)	Wellbore	CLARK 13N-11HZ AWB
Facility	SEC.11-T1N-R66W		

WELLPATH DATA (151 stations)

MD [ft]	Inclination [°]	Azimuth [°]	TVD [ft]	Vert Sect [ft]	North [ft]	East [ft]	Latitude	Longitude	DLS [°/100ft]	Comments
10646.00	91.280	176.820	7457.40	2910.12	-2908.45	99.88	40°03'49.349"N	104°45'06.063"W	0.23	
10741.00	90.670	176.110	7455.79	3005.09	-3003.26	105.74	40°03'48.412"N	104°45'05.988"W	0.99	
10836.00	90.640	175.080	7454.70	3100.01	-3097.97	113.04	40°03'47.476"N	104°45'05.894"W	1.08	
10931.00	91.970	177.140	7452.54	3194.94	-3192.72	119.48	40°03'46.540"N	104°45'05.811"W	2.58	
11025.00	91.730	176.800	7449.50	3288.89	-3286.54	124.44	40°03'45.613"N	104°45'05.747"W	0.44	
11120.00	92.120	176.220	7446.31	3383.81	-3381.31	130.22	40°03'44.676"N	104°45'05.673"W	0.74	
11215.00	92.000	174.730	7442.89	3478.67	-3475.95	137.71	40°03'43.741"N	104°45'05.577"W	1.57	
11310.00	92.820	177.770	7438.90	3573.55	-3570.65	143.92	40°03'42.805"N	104°45'05.497"W	3.31	
11405.00	91.340	179.480	7435.45	3668.47	-3665.55	146.20	40°03'41.867"N	104°45'05.468"W	2.38	
11500.00	91.630	177.360	7432.99	3763.42	-3760.48	148.82	40°03'40.929"N	104°45'05.434"W	2.25	
11594.00	92.330	177.730	7429.74	3857.36	-3854.33	152.84	40°03'40.002"N	104°45'05.382"W	0.84	
11689.00	92.000	178.660	7426.15	3952.29	-3949.22	155.83	40°03'39.064"N	104°45'05.344"W	1.04	
11784.00	92.290	177.140	7422.60	4047.22	-4044.09	159.31	40°03'38.127"N	104°45'05.299"W	1.63	
11879.00	92.330	176.230	7418.77	4142.13	-4138.85	164.80	40°03'37.190"N	104°45'05.229"W	0.96	
11978.00	91.830	178.560	7415.17	4241.05	-4237.67	169.29	40°03'36.213"N	104°45'05.171"W	2.41	Last BHI MWD Survey
12037.00	91.830	178.560	7413.29	4300.02	-4296.62	170.78	40°03'35.631"N	104°45'05.152"W	0.00	Projection to Bit

HOLE & CASING SECTIONS - Ref Wellbore: CLARK 13N-11HZ AWB Ref Wellpath: CLARK 13N-11HZ AWP

String/Diameter	Start MD [ft]	End MD [ft]	Interval [ft]	Start TVD [ft]	End TVD [ft]	Start N/S [ft]	Start E/W [ft]	End N/S [ft]	End E/W [ft]
13.5in Open Hole	13.00	1222.00	1209.00	13.00	1221.98	0.00	0.00	0.37	-5.48
9.625in Casing Surface	13.00	1221.00	1208.00	13.00	1220.98	0.00	0.00	0.36	-5.48
8.75in Open Hole	1221.00	7862.00	6641.00	1220.98	7481.31	0.36	-5.48	-127.90	29.70
7in Casing Intermediate	13.00	7850.00	7837.00	13.00	7480.25	0.00	0.00	-115.95	29.74
6.125in Open Hole	7850.00	12037.00	4187.00	7480.25	7413.29	-115.95	29.74	-4296.62	170.78



Actual Wellpath Report

CLARK 13N-11HZ AWP

Page 6 of 7



REFERENCE WELLPATH IDENTIFICATION

Operator	KERR-MCGEE OIL & GAS ONSHORE LP	Slot	SLOT#01 CLARK 13N-11HZ (540'FNL & 470'FWL, SEC.11)
Area	COLORADO	Well	CLARK 13N-11HZ
Field	WELD COUNTY (KERR MCGEE)	Wellbore	CLARK 13N-11HZ AWB
Facility	SEC.11-T1N-R66W		

TARGETS

Name	MD [ft]	TVD [ft]	North [ft]	East [ft]	Grid East [US ft]	Grid North [US ft]	Latitude	Longitude	Shape
CLARK 3 PAD SECTION LINES		0.00	0.00	0.00	3209320.61	1269845.23	40°04'18.091"N	104°45'07.348"W	polygon
CLARK 13N-11HZ BHL (460'FSL & 710'FWL, SEC.11) REV-2		7376.00	-4321.20	219.12	3209576.16	1265526.20	40°03'35.388"N	104°45'04.530"W	point
CLARK 13N-11HZ BHL ON PLAT (460'FSL & 660'FWL, SEC.11) REV-1		7376.00	-4321.20	169.12	3209526.16	1265525.78	40°03'35.388"N	104°45'05.173"W	point
CLARK 13N-11HZ BHL ON PLAT (460'FSL & 660'FWL, SEC.11) REV-5		7480.00	-4321.20	169.12	3209526.16	1265525.78	40°03'35.388"N	104°45'05.173"W	point
CLARK 13N-11HZ BHL (460'FSL & 710'FWL, SEC.11) REV-3		7498.00	-4321.20	219.12	3209576.16	1265526.20	40°03'35.388"N	104°45'04.530"W	point
CLARK 13N-11HZ BHL (460'FSL & 710'FWL, SEC.11) REV-4		7500.00	-4321.20	219.12	3209576.16	1265526.20	40°03'35.388"N	104°45'04.530"W	point
CLARK 3 PAD HARDLINES (460' SETBACKS)		7500.00	0.00	0.00	3209320.61	1269845.23	40°04'18.091"N	104°45'07.348"W	polygon

WELLPATH COMPOSITION - Ref Wellbore: CLARK 13N-11HZ AWB Ref Wellpath: CLARK 13N-11HZ AWP

Start MD [ft]	End MD [ft]	Positional Uncertainty Model	Log Name/Comment	Wellbore
13.00	1153.00	Generic gyro - continuous (Standard)	GYRODATA SURVEY <113-1153>	CLARK 13N-11HZ AWB
1153.00	7812.00	NaviTrak (Standard)	BHI MWD Surveys 8 3/4" <1256-7812>	CLARK 13N-11HZ AWB
7812.00	11978.00	OnTrak (Standard)	BHI MWD Surveys 6 1/8" <7896-11978>	CLARK 13N-11HZ AWB
11978.00	12037.00	Blind Drilling (std)	Projection to bit	CLARK 13N-11HZ AWB



Actual Wellpath Report

CLARK 13N-11HZ AWP

Page 7 of 7



REFERENCE WELLPATH IDENTIFICATION

Operator	KERR-MCGEE OIL & GAS ONSHORE LP	Slot	SLOT#01 CLARK 13N-11HZ (540'FNL & 470'FWL, SEC.11)
Area	COLORADO	Well	CLARK 13N-11HZ
Field	WELD COUNTY (KERR MCGEE)	Wellbore	CLARK 13N-11HZ AWB
Facility	SEC.11-T1N-R66W		

WELLPATH COMMENTS

MD [ft]	Inclination [°]	Azimuth [°]	TVD [ft]	Comment
13.00	0.000	278.990	13.00	Tie-On
113.00	0.420	278.990	113.00	Begin GYRO Surveys
1153.00	0.490	280.940	1152.99	Tie-Into GYRO Surveys
1256.00	0.650	308.300	1255.98	Begin BHI MWD Surveys
7850.00	84.687	180.104	7480.25	7" Casing Point
11978.00	91.830	178.560	7415.17	Last BHI MWD Survey
12037.00	91.830	178.560	7413.29	Projection to Bit