

The Road to Excellence Starts with Safety

Sold To #: 300721	Ship To #: 2925183	Quote #:	Sales Order #: 9472633
Customer: WPX ENERGY ROCKY MOUNTAIN LLC-EBUS	Customer Rep: Hartl, Al		
Well Name: RWF	Well #: 12-35	API/UWI #: 05-045-20462	
Field: Rulison	City (SAP): RIFLE	County/Parish: Garfield	State: Colorado
Legal Description:			
Lat: N 39.484 deg. OR N 39 deg. 29 min. 0.6 secs.		Long: W 107.863 deg. OR W -108 deg. 8 min. 13.704 secs.	
Contractor: NABORS 576	Rig/Platform Name/Num: NABORS 576		
Job Purpose: Cement Surface Casing		Ticket Amount:	
Well Type: Development Well	Job Type: Cement Surface Casing		
Sales Person: MAYO, MARK	Srvc Supervisor: REEVES, BRANDON	MBU ID Emp #: 287883	

Activity Description	Date/Time	Cht #	Rate bbl/ min	Volume bbl		Pressure psig		Comments
				Stage	Total	Tubing	Casing	
Call Out	05/16/2012 17:15							
Pre-Convoy Safety Meeting	05/16/2012 19:35							
Arrive at Location from Service Center	05/16/2012 21:00							
Assessment Of Location Safety Meeting	05/16/2012 21:45							
Other	05/16/2012 22:00							SPOT EQUIPMENT
Pre-Rig Up Safety Meeting	05/16/2012 22:15							
Rig-Up Equipment	05/16/2012 22:30							
Pre-Job Safety Meeting	05/17/2012 01:45							
Start Job	05/17/2012 01:57							TD-1130' TP-1109' SJ-43.85' MW-9.3# HOLE-13.5" CASING-9.625" 32.3#
Test Lines	05/17/2012 01:59						3900.0	
Pump Spacer 1	05/17/2012 02:03		4	20			115.0	FRESH WATER DISPLACEMENT
Pump Lead Cement	05/17/2012 02:09		8	80.5			375.0	190 SKS. @ 12.3# 2.38 YIELD 13.75 WRQ.
Pump Tail Cement	05/17/2012 02:20		8	71.4			360.0	190 SKS. @ 12.8# 2.11 YIELD 11.75 WRQ.
Drop Top Plug	05/17/2012 02:30							
Pump Displacement	05/17/2012 02:33		10				560.0	FRESH WATER RDISPLACEMENT
Slow Rate	05/17/2012 02:41		5	65			335.0	
Slow Rate	05/17/2012 02:43		2	73			220.0	

Sold To # : 300721

Ship To # :2925183

Quote # :

Sales Order # :

9472633

SUMMIT Version: 7.3.0021

Thursday, May 17, 2012 12:49:00

Cementing Job Log

Activity Description	Date/Time	Cht #	Rate bbl/min	Volume bbl		Pressure psig		Comments
				Stage	Total	Tubing	Casing	
Bump Plug	05/17/2012 02:49		2	83			1120.0	PLUG LANDED AT 250 PSI. PRESSURED UP TO 1120 PSI.
Check Floats	05/17/2012 02:51							FLOATS HELD
End Job	05/17/2012 02:53							WELL WAS CIRCULATED BEFORE STARTING THE JOB. GOOD CIRCULATION THROUGHOUT THE JOB. PIPE WAS NOT RECIPROCATED. CIRCULATED 18 BBLs. OF CEMENT TO SURFACE.
Other	05/17/2012 03:05							CEMENT FELL BACK DOWN THE ANNULUS. WAIT FOR TOPOUT CEMENT TO ARRIVE ON LOCATION
Other	05/17/2012 09:00							TOPOUT CEMENT ARRIVED ON LOCATION
Start Job	05/17/2012 09:45							START TOPOUT #1
Pump Cement	05/17/2012 09:49		2	7.8		20.0		63 SKS. @ 15.8# 1.15 YIELD 5.01 WRQ. PUMPED 7.8 BBLs. INTO THE ANNULUS WHEN CEMENT REACHED THE SURFACE. HAD 13 BBLs. MIXED. PUMPED THE REMAINING CEMENT TO THE PIT.
Shutdown	05/17/2012 09:53							
End Job	05/17/2012 09:55							END TOPOUT #1 CIRCULATED CEMENT TO SURFACE
Start Job	05/17/2012 11:13							START TOPOUT #2
Pump Cement	05/17/2012 11:15		1	6.6		.0		32 SKS. @ 15.8# 1.15 YIELD 5.01 WRQ.
Shutdown	05/17/2012 11:21							
Activity Description	Date/Time	Cht	Rate bbl/min	Volume bbl		Pressure psig		Comments

Sold To # : 300721

Ship To # :2925183

Quote # :

Sales Order # :

9472633

SUMMIT Version: 7.3.0021

Thursday, May 17, 2012 12:49:00

HALLIBURTON

Cementing Job Log

		#		Stage	Total	Tubing	Casing	
End Job	05/17/2012 11:25							END TOPOUT #2 CIRCULATED CEMENT TO SURFACE
Rig-Down Equipment	05/17/2012 12:25							THANKS FOR USING HALLIBURTON. BRANDON REEEVS AND CREW.

Sold To # : 300721

Ship To # :2925183

Quote # :

Sales Order # :

9472633

SUMMIT Version: 7.3.0021

Thursday, May 17, 2012 12:49:00

The Road to Excellence Starts with Safety

Sold To #: 300721	Ship To #: 2925183	Quote #:	Sales Order #: 9472633
Customer: WPX ENERGY ROCKY MOUNTAIN LLC-EBUS	Customer Rep: Hartl, Al		
Well Name: RWF	Well #: 12-35	API/UWI #: 05-045-20462	
Field: Rulison	City (SAP): RIFLE	County/Parish: Garfield	State: Colorado
Lat: N 39.484 deg. OR N 39 deg. 29 min. 0.6 secs.	Long: W 107.863 deg. OR W -108 deg. 8 min. 13.704 secs.		
Contractor: NABORS 576	Rig/Platform Name/Num: NABORS 576		
Job Purpose: Cement Surface Casing			
Well Type: Development Well	Job Type: Cement Surface Casing		
Sales Person: MAYO, MARK	Srv Supervisor: REEVES, BRANDON	MBU ID Emp #: 287883	

Job Personnel

HES Emp Name	Exp Hrs	Emp #	HES Emp Name	Exp Hrs	Emp #	HES Emp Name	Exp Hrs	Emp #
DOUT, JACOB J	14.0	430298	REEVES, BRANDON W	14.0	287883	WOLFE, JON P	14.0	485217
WYCKOFF, RYAN Scott	14.0	476117						

Equipment

HES Unit #	Distance-1 way	HES Unit #	Distance-1 way	HES Unit #	Distance-1 way	HES Unit #	Distance-1 way
10025118	60 mile	10567589C	60 mile	10783493	60 mile	10822007	60 mile
10969711	60 mile	11583931	60 mile	11808829	60 mile		

Job Hours

Date	On Location Hours	Operating Hours	Date	On Location Hours	Operating Hours	Date	On Location Hours	Operating Hours
05/16/2012	2	0	05/17/2012	12				
TOTAL			Total is the sum of each column separately					

Job

Formation Name	Date	Time	Time Zone
Formation Depth (MD) Top Bottom	Called Out	16 - May - 2012	17:15 MST
Form Type BHST	On Location	16 - May - 2012	21:00 MST
Job depth MD 1109. ft	Job Depth TVD 1109. ft	Job Started	17 - May - 2012 01:57 MST
Water Depth	Wk Ht Above Floor 3. ft	Job Completed	17 - May - 2012 11:25 MST
Perforation Depth (MD) From To	Departed Loc	17 - May - 2012	00:00 MST

Well Data

Description	New / Used	Max pressure psig	Size in	ID in	Weight lbm/ft	Thread	Grade	Top MD ft	Bottom MD ft	Top TVD ft	Bottom TVD ft
-------------	------------	-------------------	---------	-------	---------------	--------	-------	-----------	--------------	------------	---------------

Sales/Rental/3rd Party (HES)

Description	Qty	Qty uom	Depth	Supplier
PLUG,CMTG,TOP,9 5/8,HWE,8.16 MIN/9.06 MA	1	EA		

Tools and Accessories

Type	Size	Qty	Make	Depth	Type	Size	Qty	Make	Depth	Type	Size	Qty	Make
Guide Shoe					Packer					Top Plug	9.625"	1	
Float Shoe					Bridge Plug					Bottom Plug			
Float Collar					Retainer					SSR plug set			
Insert Float										Plug Container	9.625"	1	
Stage Tool										Centralizers			

Miscellaneous Materials

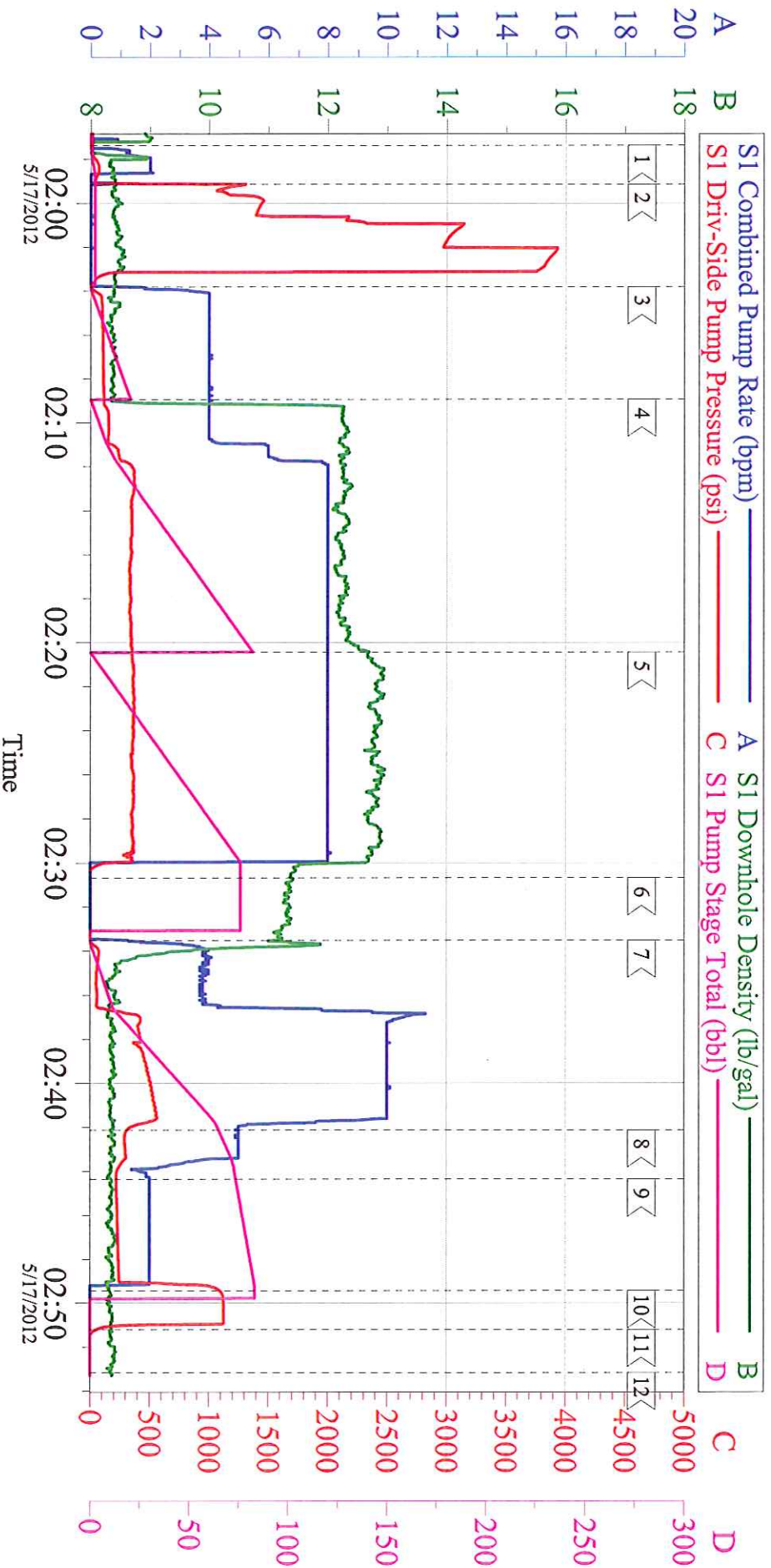
Gelling Agt	Conc	Surfactant	Conc	Acid Type	Qty	Conc	%
Treatment Fld	Conc	Inhibitor	Conc	Sand Type	Size	Qty	

Fluid Data

Stage/Plug #: 1	Fluid #	Stage Type	Fluid Name	Qty	Qty uom	Mixing Density lbm/gal	Yield ft3/sk	Mix Fluid Gal/sk	Rate bbl/min	Total Mix Fluid Gal/sk
-----------------	---------	------------	------------	-----	---------	------------------------	--------------	------------------	--------------	------------------------

Stage/Plug #: 1									
Fluid #	Stage Type	Fluid Name	Qty	Qty uom	Mixing Density lbm/gal	Yield ft ³ /sk	Mix Fluid Gal/sk	Rate bbl/min	Total Mix Fluid Gal/sk
1	Water Spacer		20.00	bbl	8.33	.0	.0	.0	
2	VersaCem Lead Cement	VERSACEM (TM) SYSTEM (452010)	190.0	sacks	12.3	2.38	13.75		13.75
	13.75 Gal	FRESH WATER							
3	VersaCem Tail Cement	VERSACEM (TM) SYSTEM (452010)	190.0	sacks	12.8	2.11	11.75		11.75
	11.75 Gal	FRESH WATER							
4	Displacement		83.00	bbl	8.33	.0	.0	.0	
5	Topout Cement	HALCEM (TM) SYSTEM (452986)	120.0	sacks	15.8	1.15	5.01		5.01
	5.01 Gal	FRESH WATER							
Calculated Values		Pressures		Volumes					
Displacement	83.8	Shut In: Instant		Lost Returns	N0	Cement Slurry	151.9	Pad	
Top Of Cement	SURFACE	5 Min		Cement Returns	18	Actual Displacement	83	Treatment	
Frac Gradient		15 Min		Spacers	20	Load and Breakdown		Total Job	
Rates									
Circulating		Mixing	8	Displacement	10	Avg. Job	9		
Cement Left In Pipe	Amount	43.85 ft	Reason	Shoe Joint					
Frac Ring # 1 @	ID	Frac ring # 2 @	ID	Frac Ring # 3 @	ID	Frac Ring # 4 @	ID		
The Information Stated Herein Is Correct				Customer Representative Signature					

WPX 9 5/8" SURFACE RWF 12-35



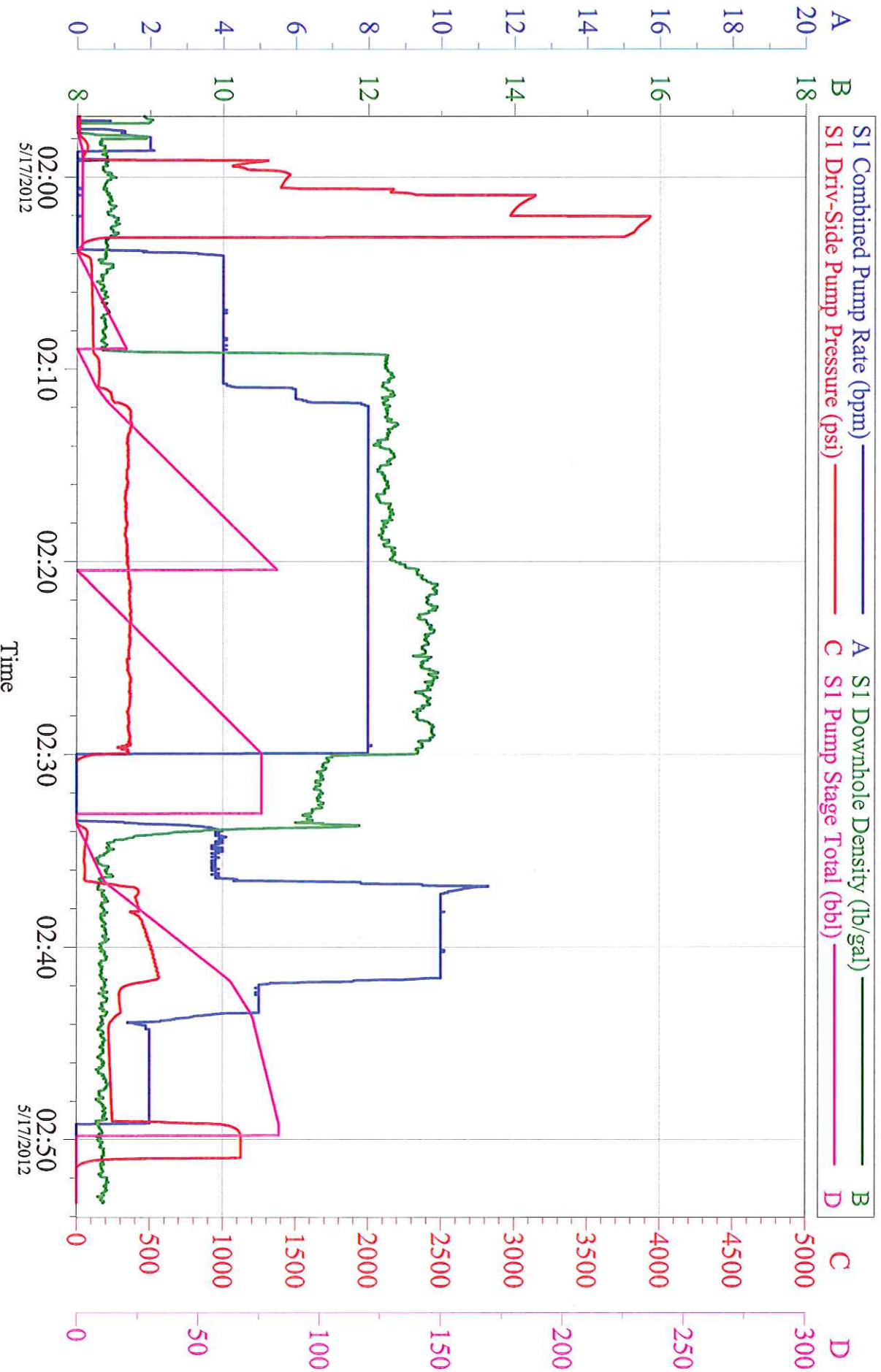
Intersection		Local Event Log	
1 <	START JOB	SDPP	SDPP
01:57:22	12.00	2 <	TEST LINES
02:08:56	111.0	5 <	PUMP TAIL CEMENT
02:33:31	0.767	8 <	SLOW RATE
02:49:27	1096	11 <	CHECK FLOATS
02:51:12	49.92	12 <	END JOB
02:03:49	5.354	3 <	PUMP H2O SPACER
02:30:41	-16.00	6 <	DROP TOP PLUG
02:44:22	219.0	9 <	SLOW RATE
02:53:10	-14.00		

Customer: WPX
Well Description: RWF 12-35
Supervisor: BRANDON REEVES

Job Date: 17-May-2012
Job Type: SURFACE
Company Rep: AL HARTL

Sales Order #: 9472633
ADC Used: YES
Elite/Operator: 3/RYAN WYCKOFF

WPX 9 5/8" SURFACE RWF 12-35

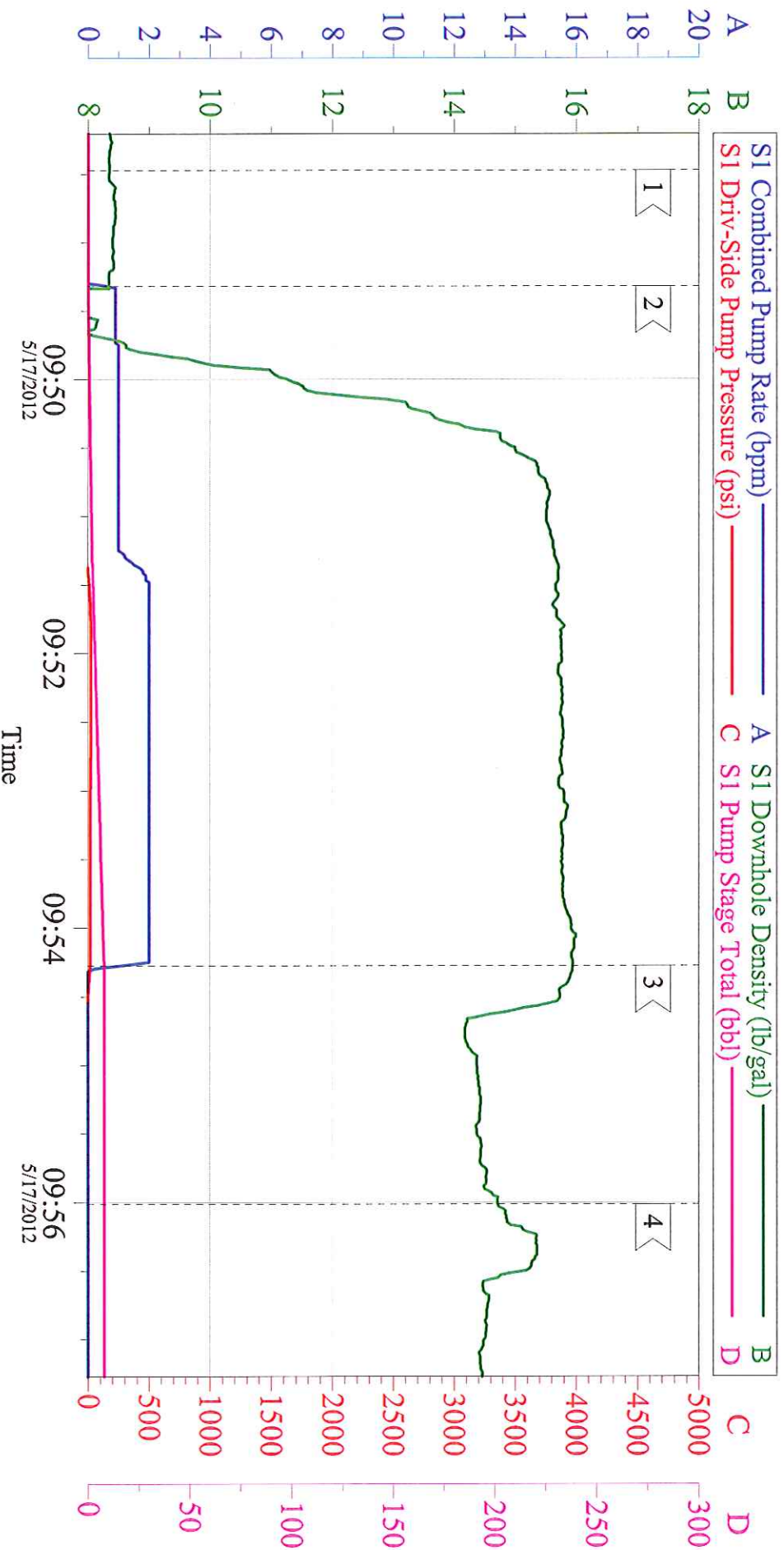


Customer: WPX
Well Description: RWF 12-35
Supervisor: BRANDON REEVES

Job Date: 17-May-2012
Job Type: SURFACE
Company Rep: AL HARTL

Sales Order #: 9472633
ADC Used: YES
Elite/Operator: 3/RYAN WYCKOFF

WPX RWF 12-35 TOPOUT #1



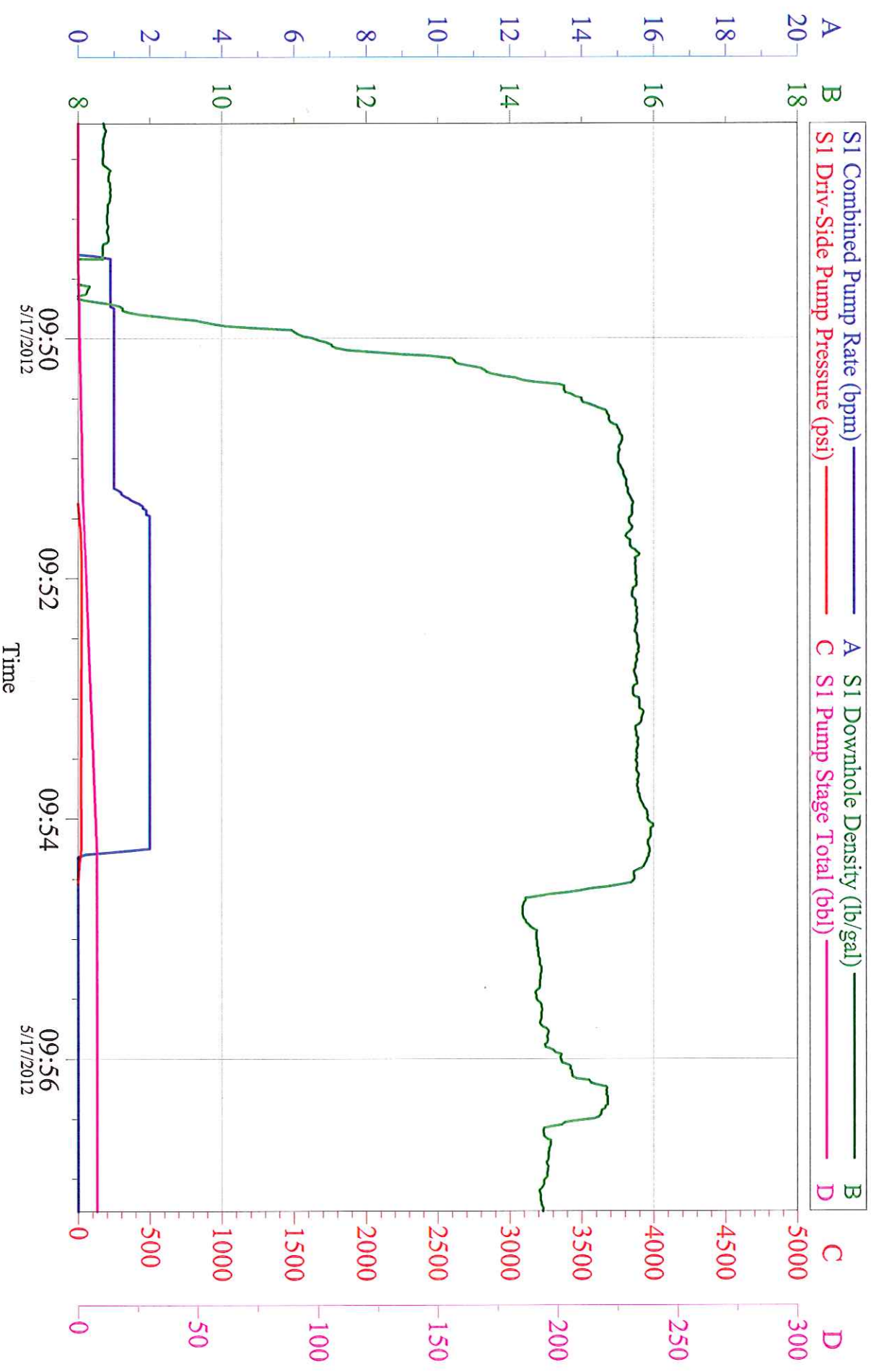
Local Event Log

Intersection		SDPP		Intersection		SDPP	
1 <	START JOB	09:48:28	-5.000	2 <	PUMP CEMENT	09:49:19	-4.000
3 <	SHUT DOWN	09:54:17	19.70	4 <	END JOB	09:56:01	-8.000

Customer:	WPX	Job Date:	17-May-2012	Sales Order #:	9472633
Well Description:	RWF 12-35	Job Type:	TOPOUT	ADC Used:	YES
Supervisor:	BRANDON REEVES	Company Rep:	AL HARTL	Elite/Operator:	3/RYAN WYCKOFF

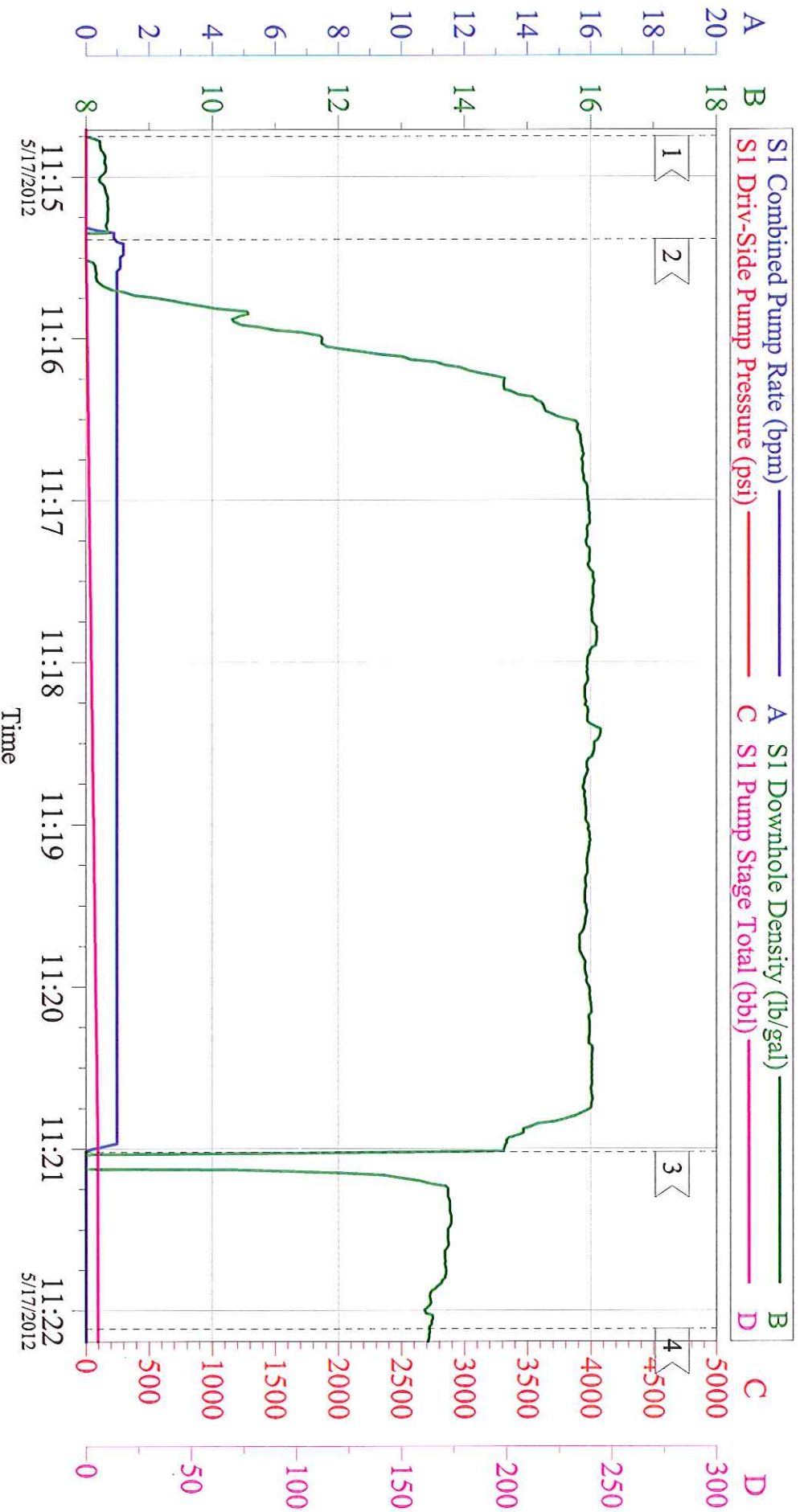
WPX

RWF 12-35 TOPOUT #1



Customer:	WPX	Job Date:	17-May-2012	Sales Order #:	9472633
Well Description:	RWF 12-35	Job Type:	TOPOUT	ADC Used:	YES
Supervisor:	BRANDON REEVES	Company Rep:	AL HARTL	Elite/Operator:	3/RYAN WYCKOFF

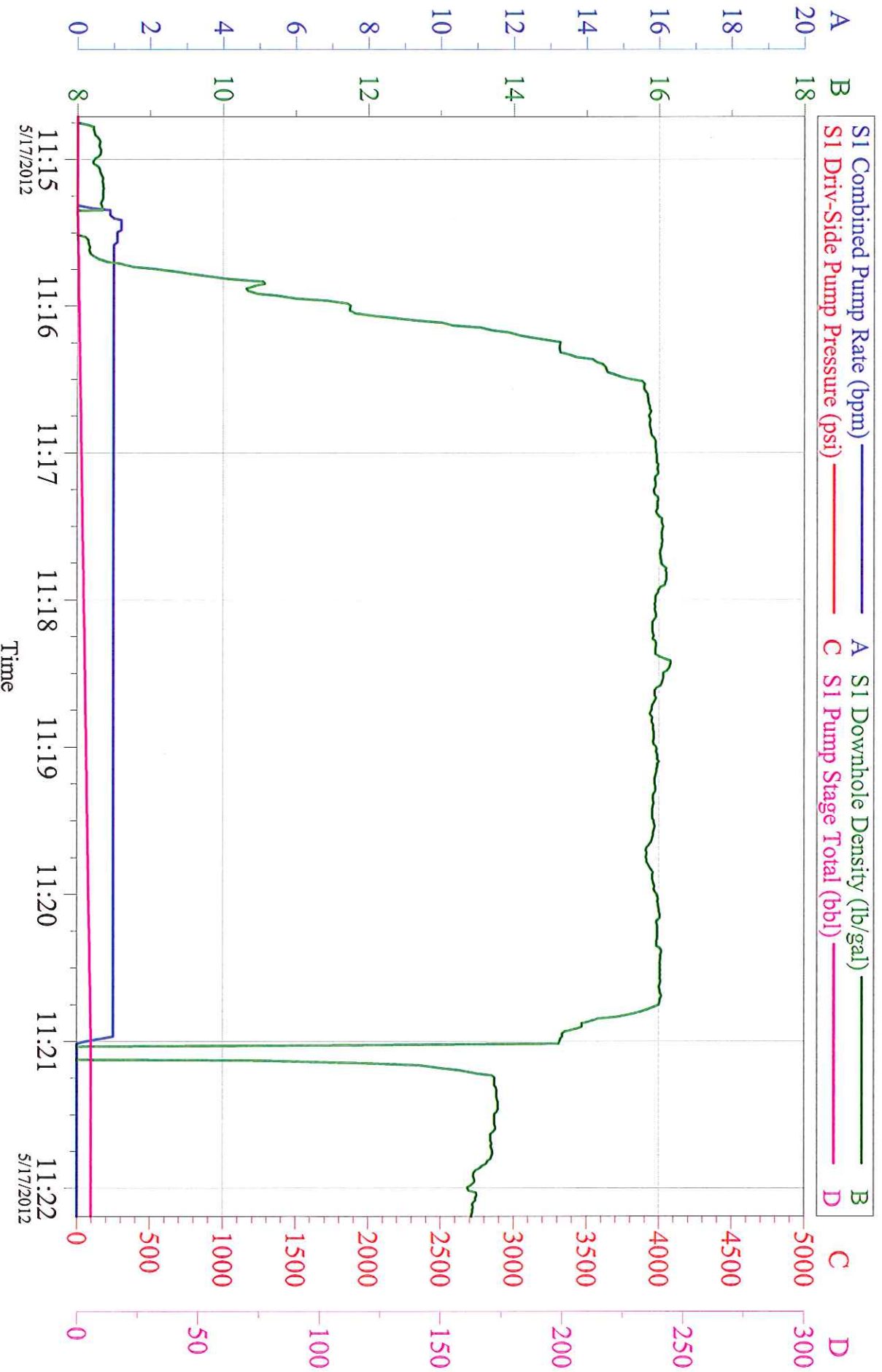
WPX RWF 12-35 TOPOUT #2



Local Event Log			
1 <	START JOB	11:14:45	2 < PUMP CEMENT
3 <	SHUT DOWN	11:21:01	4 < END JOB

Customer: WPX	Job Date: 17-May-2012	Sales Order #: 9472633
Well Description: RWF 12-35	Job Type: TOPOUT	ADC Used: YES
Supervisor: BRANDON REEVES	Company Rep: AL HARTL	Elite/Operator: 3/RVAN WYCKOFF

WPX RWF 12-35 TOPOUT #2



Customer: WPX	Job Date: 17-May-2012	Sales Order #: 9472633
Well Description: RWF 12-35	Job Type: TOPOUT	ADC Used: YES
Supervisor: BRANDON REEVES	Company Rep: AL HARTL	Elite/Operator: 3/RYAN WYCKOFF